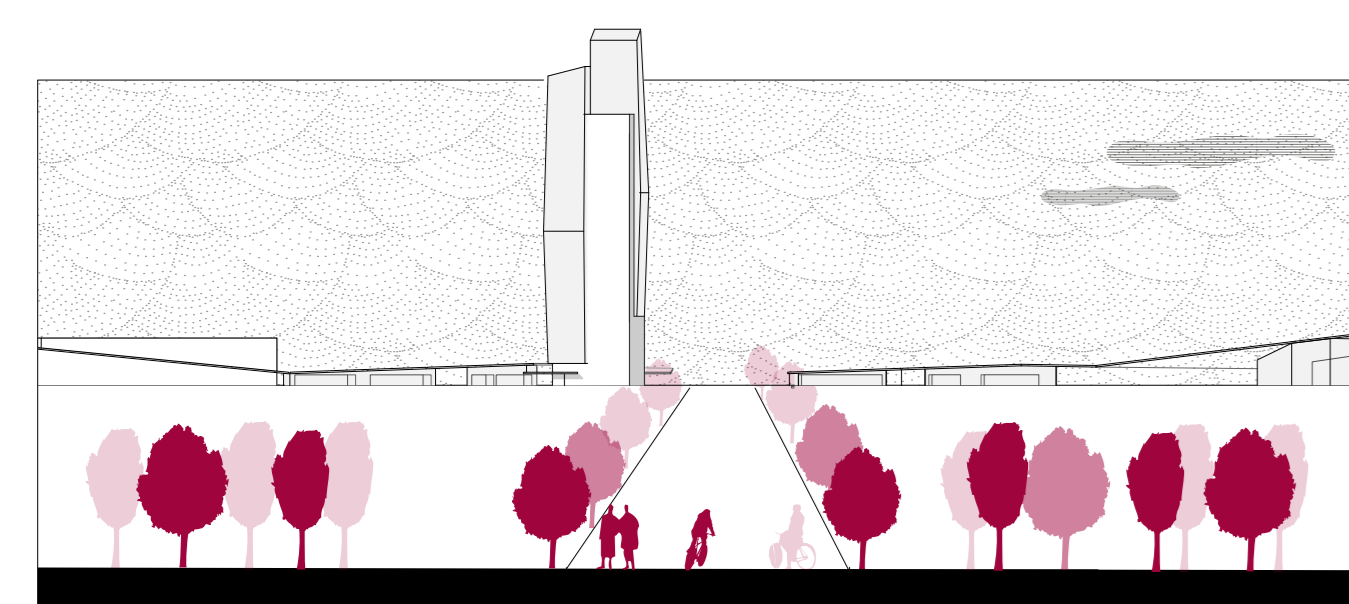
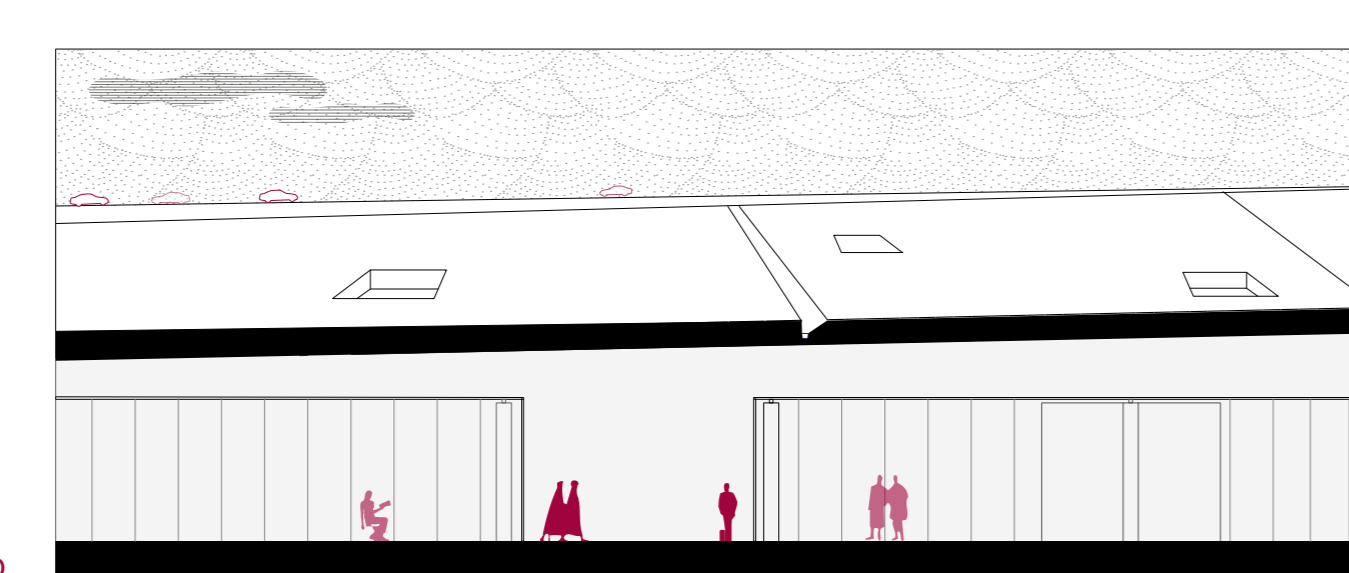


PIANITERRA
scala 1:500

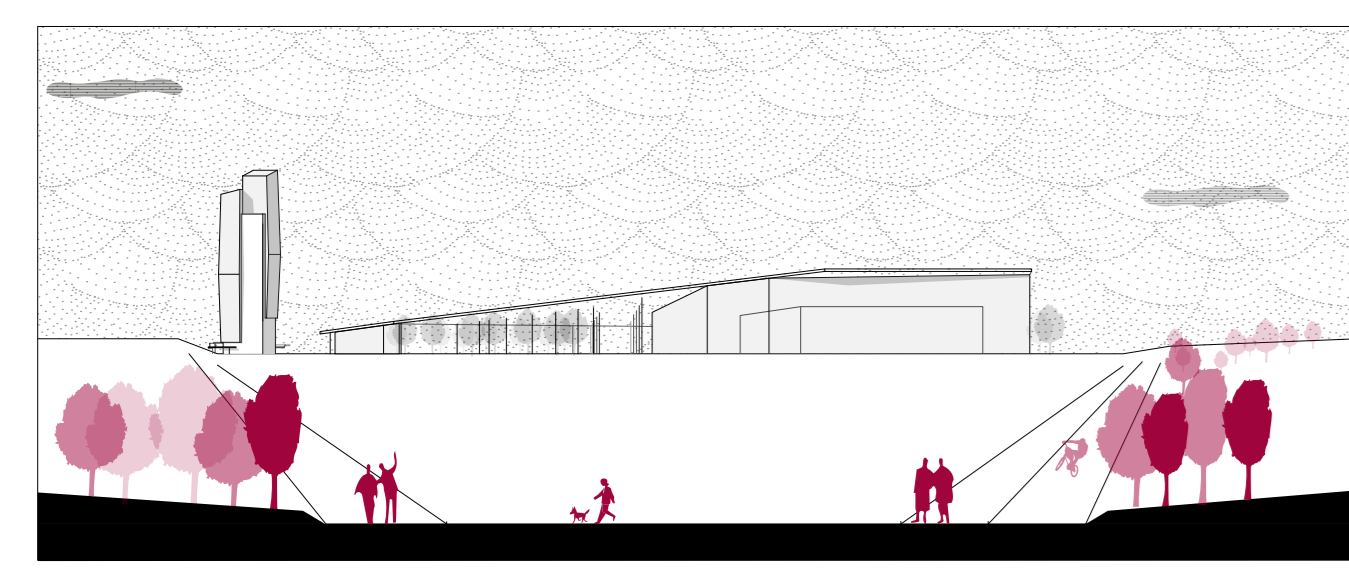
SEZIONI STRADALI
scala 1:200



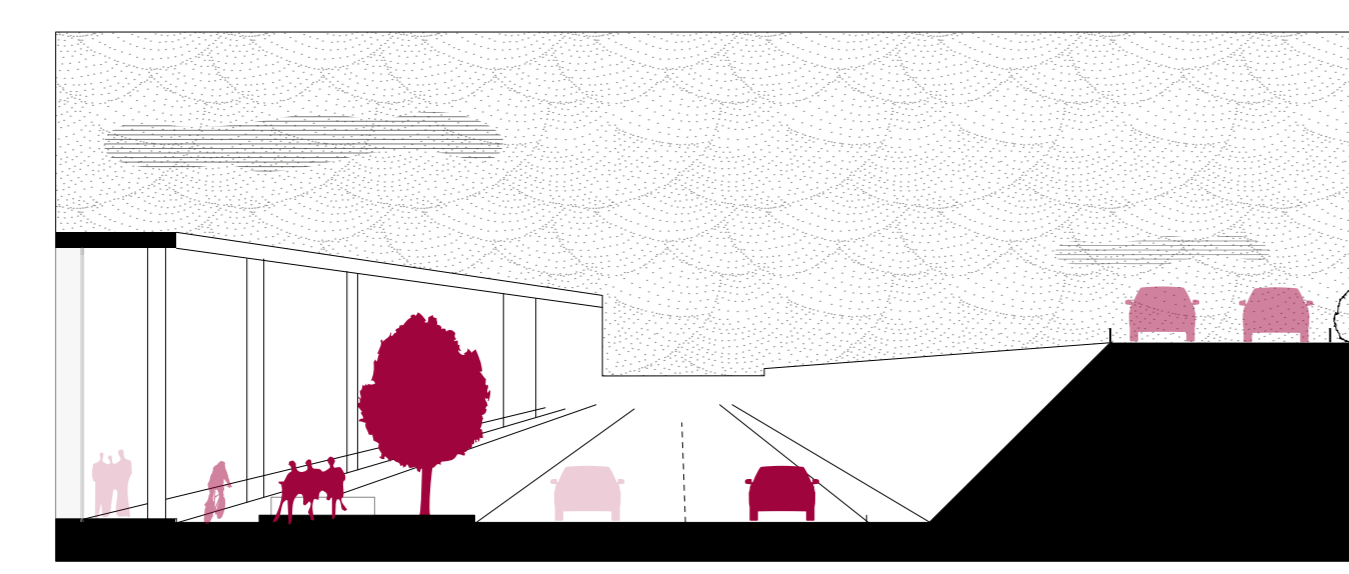
SEZIONE A



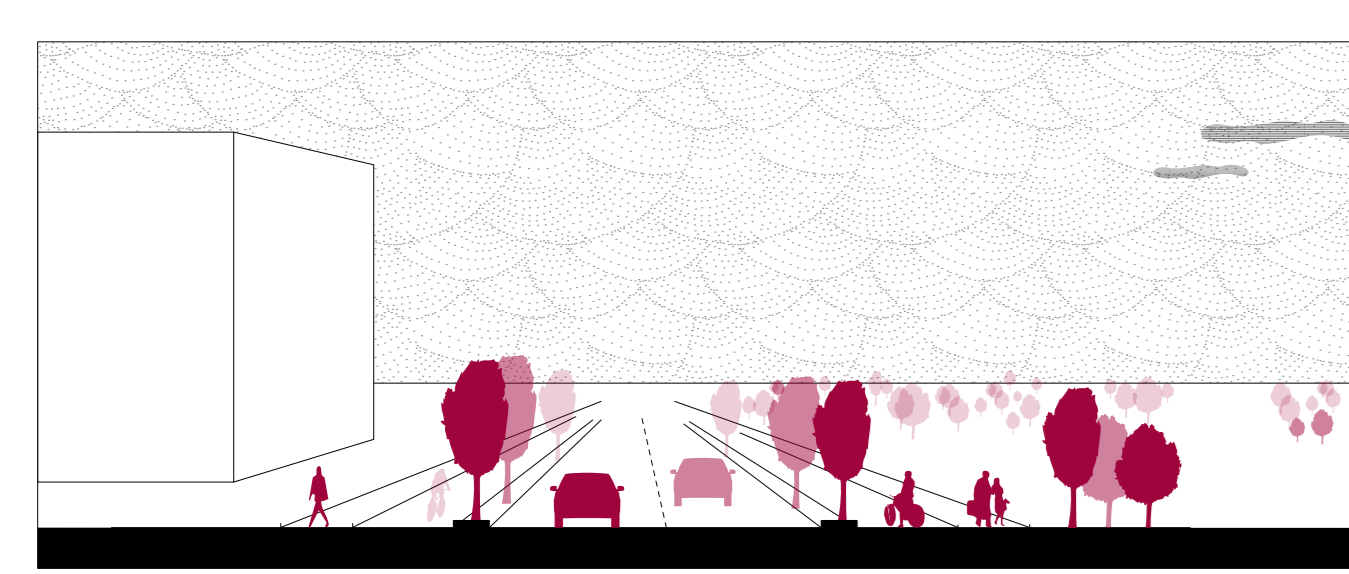
SEZIONE D



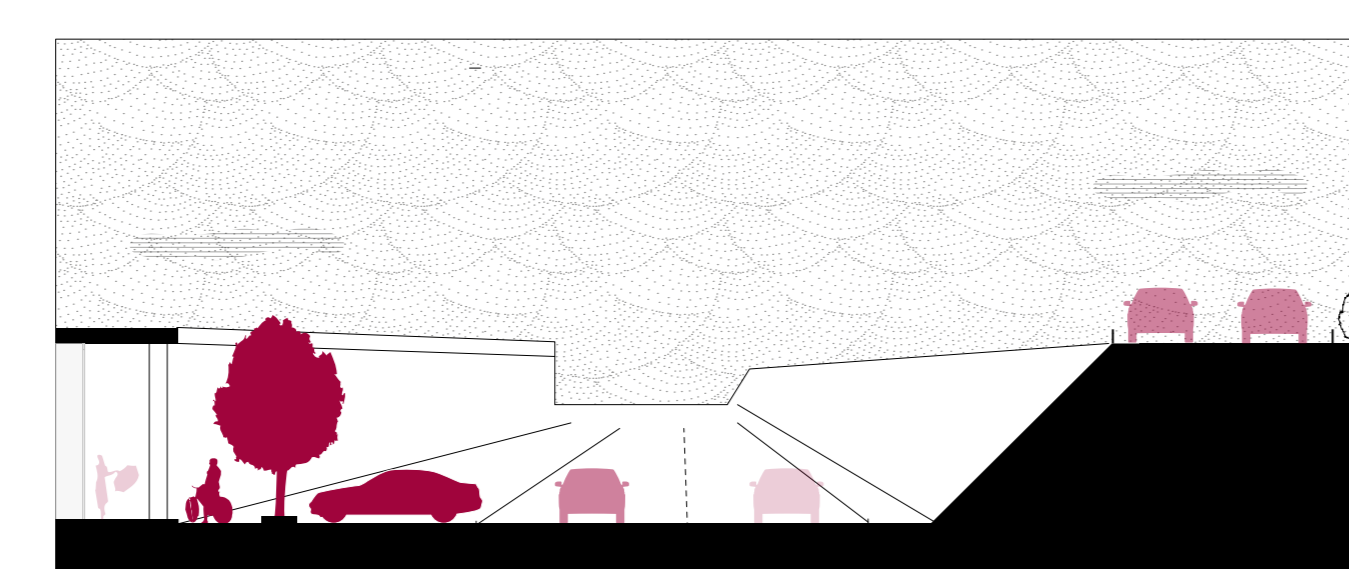
SEZIONE B



SEZIONE E

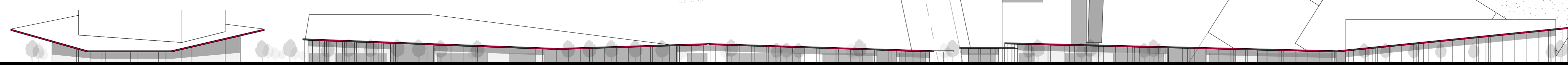


SEZIONE C



SEZIONE F

PROSPETTO TERRITORIALE / AUTOSTRADA
scala 1:1000



// LA TORRE TRA EXPO E CASCINA MERLATA. Una stanza low cost nel cielo di Milano
// Relatore: Prof. Arch. Maria Grazia Folli
// P.G. Malerba / G. Buzzzi / E. Pizzi / P. Oliaro
// M. Moscatelli / P. Pusceddu / C. Pecora
// a.a. 2012/2013