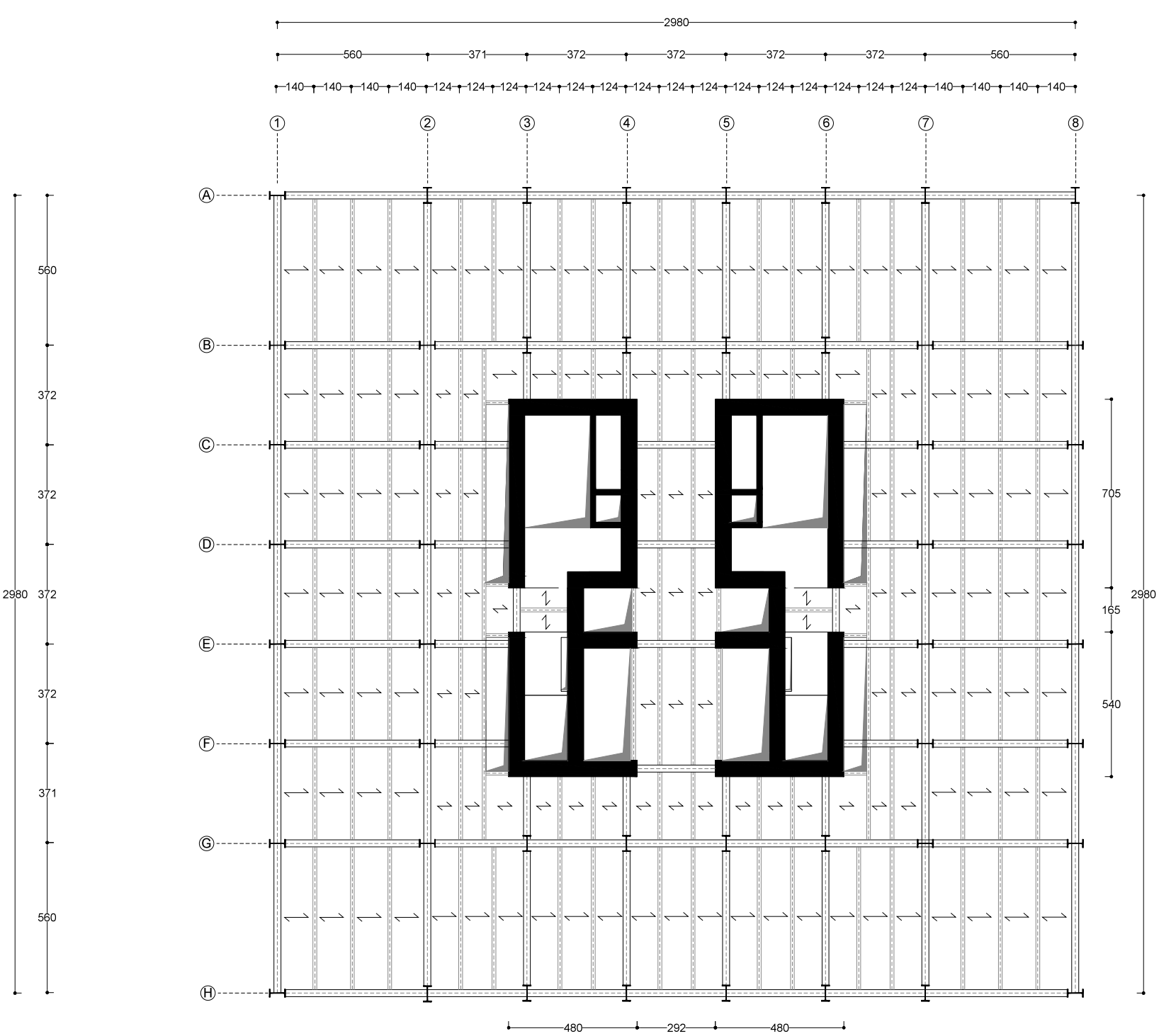
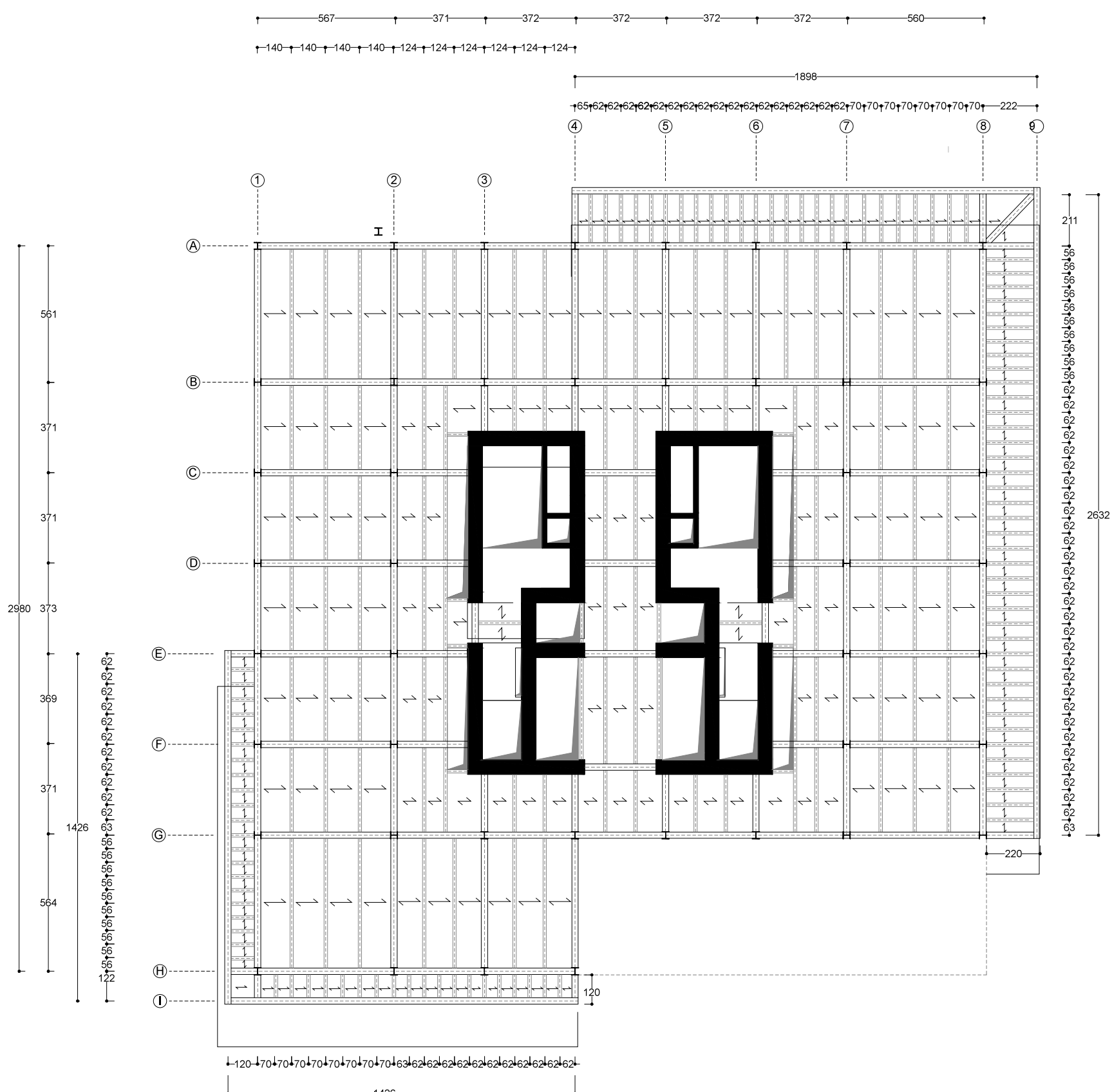


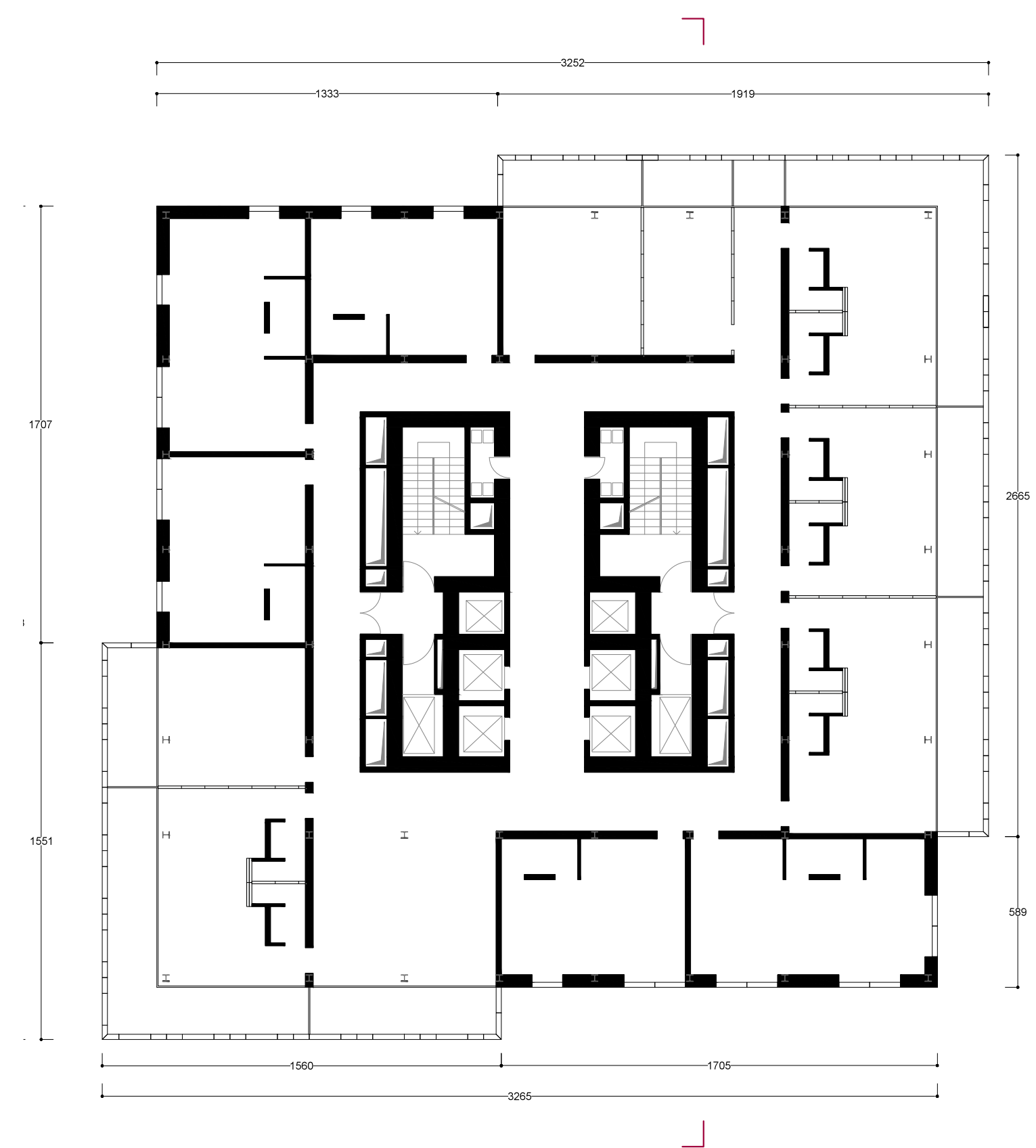
PIANTE DELLA CARPENTERIA



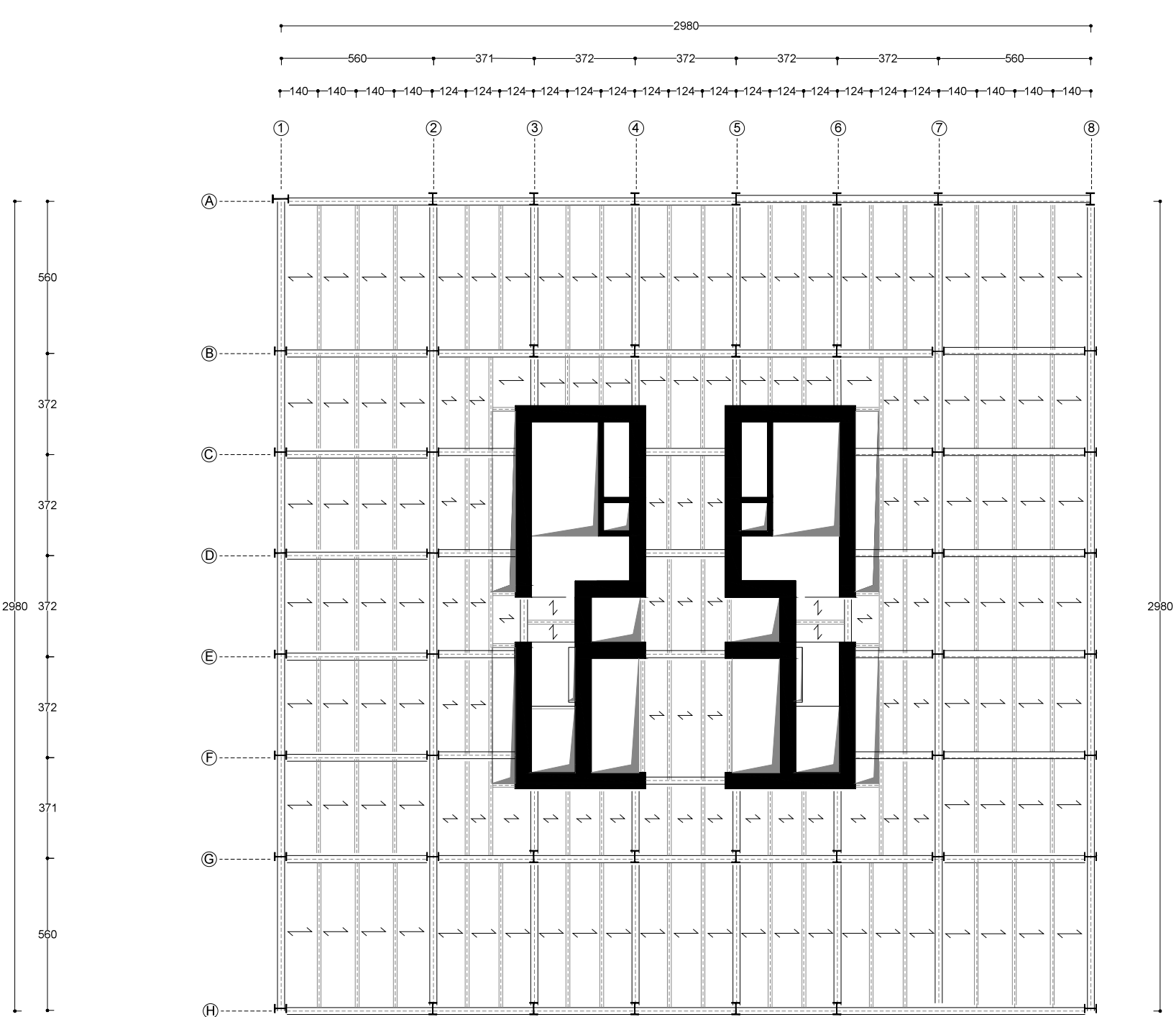
PIANTA TERRA + 0.00 m



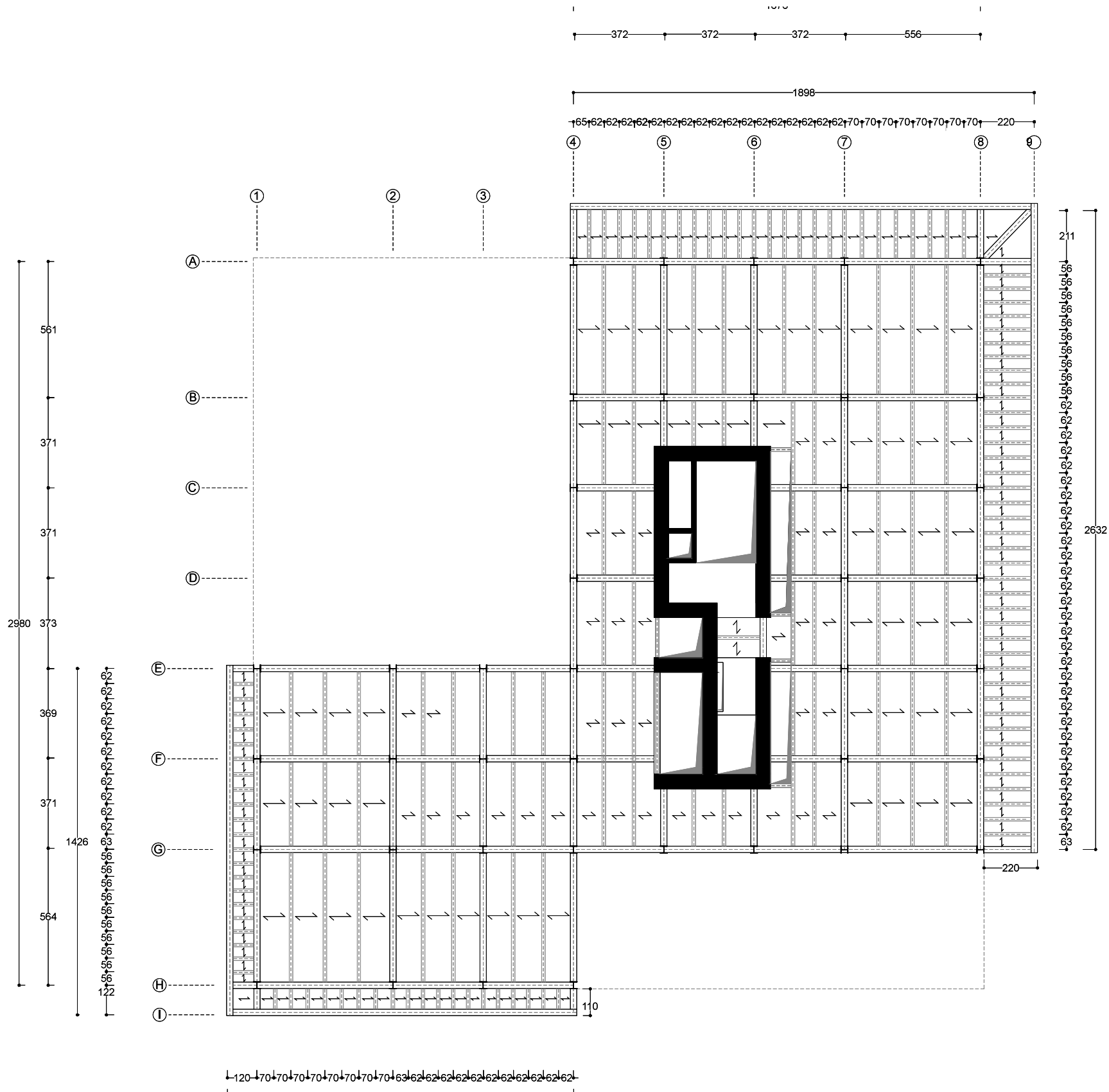
PIANTA 27° PIANO + 59.00 m



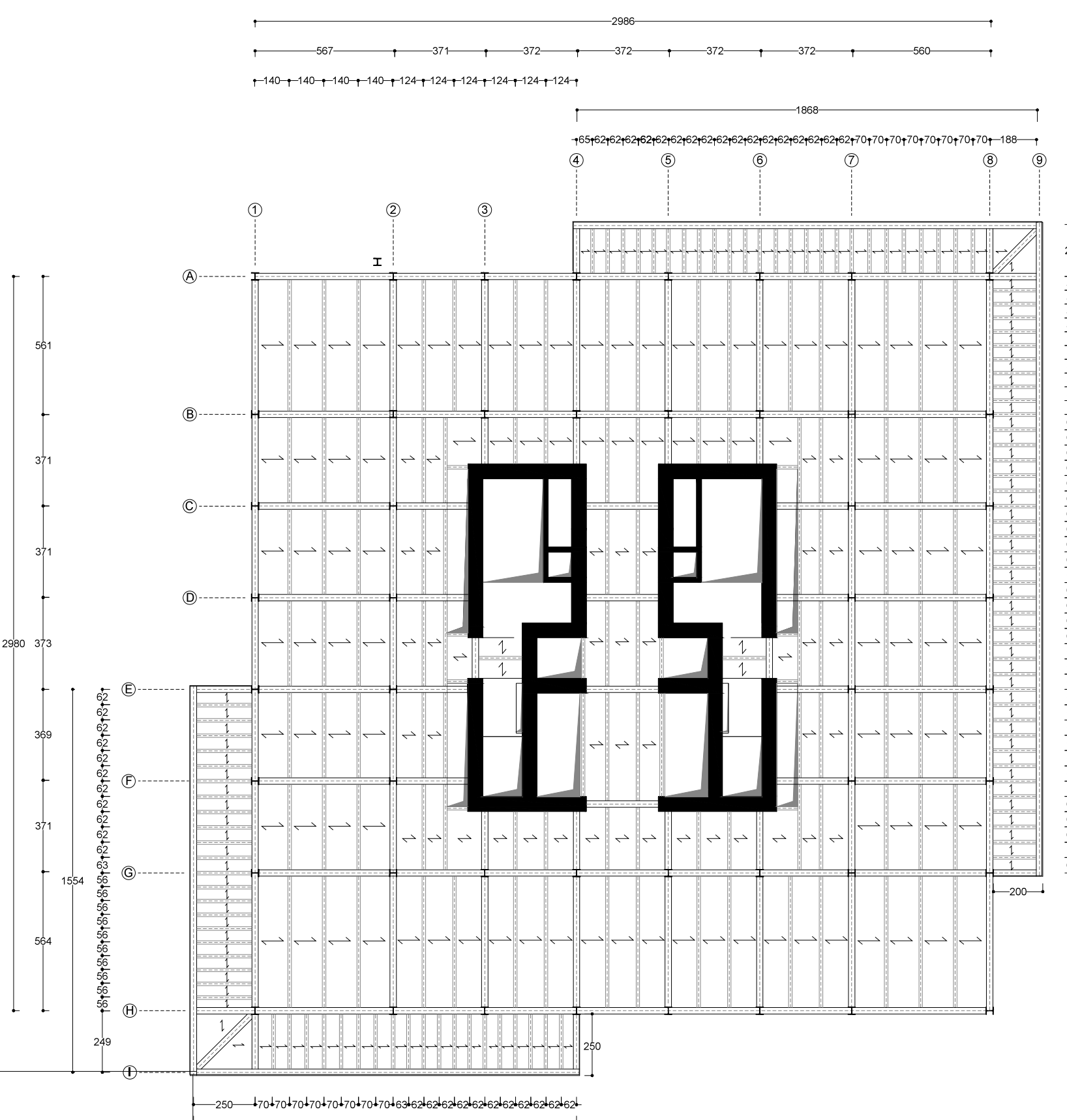
ARCHITETTONICO_PIANTA 15° PIANO + 59.00 m



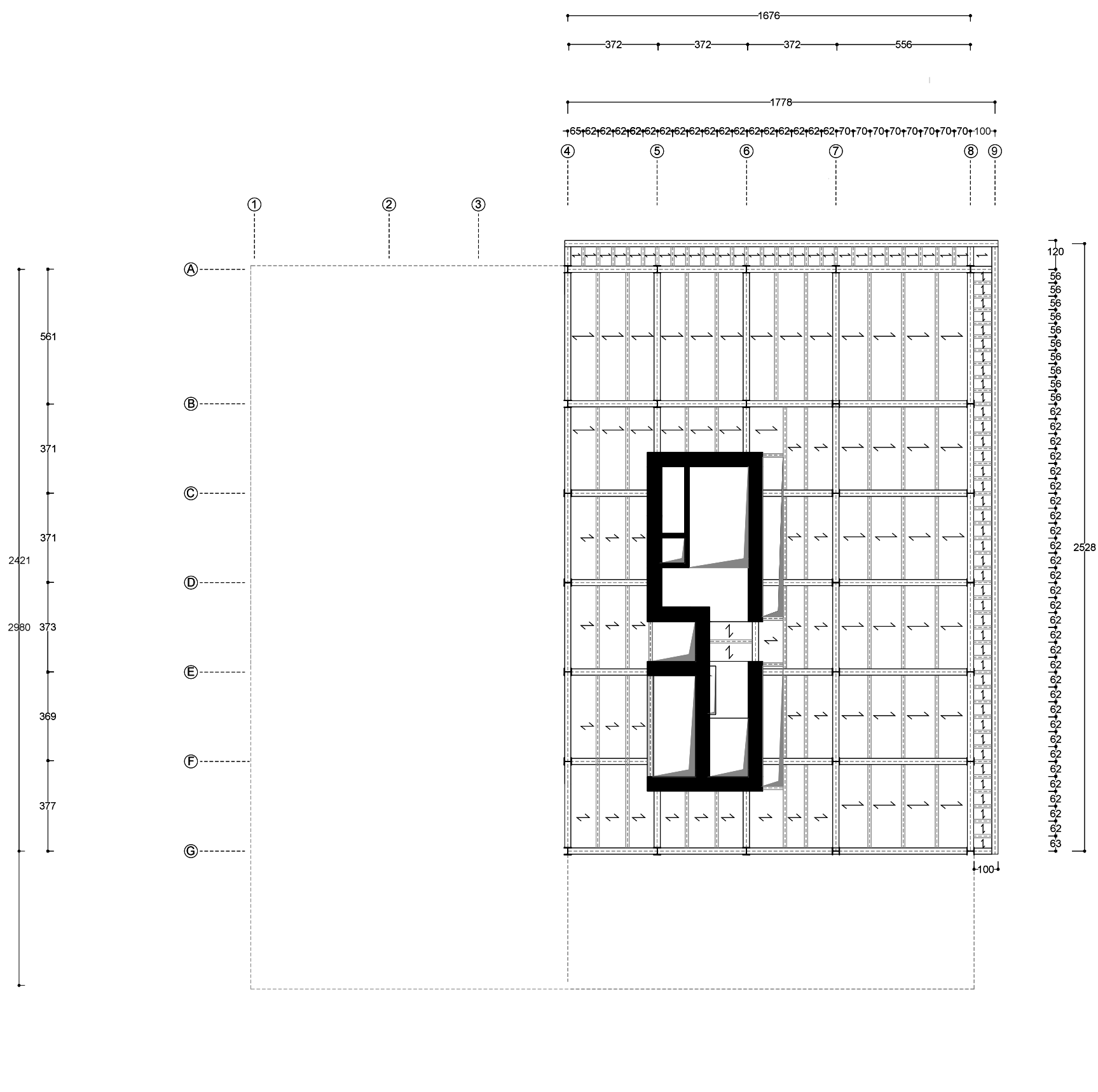
PIANTA PIANO 1° + 5.00 m



PIANTA 31° PIANO + 113.20 m



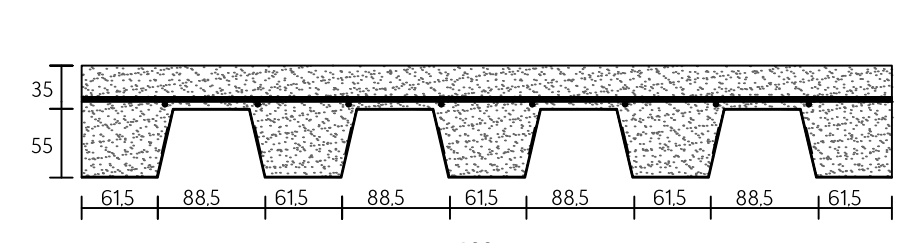
PIANTA 15° PIANO + 59.00 m



PIANTA 34° PIANO + 123.80 m

SINTESI PREDIMENSIONAMENTO

LAMIERA GRECCATA COLLABORANTE (mm)



SOLAIO DI COPERTURA

- pavimento in ceramica (20mm) 40 Kg/m²
- lastra Knauf (12.5 mm) 12 Kg/m²
- pannello di polistirene (80 mm)
- pannello di lana di roccia (100 mm) 16 Kg/m²
- lamiera Solac (90 mm) 9.16 Kg/m²

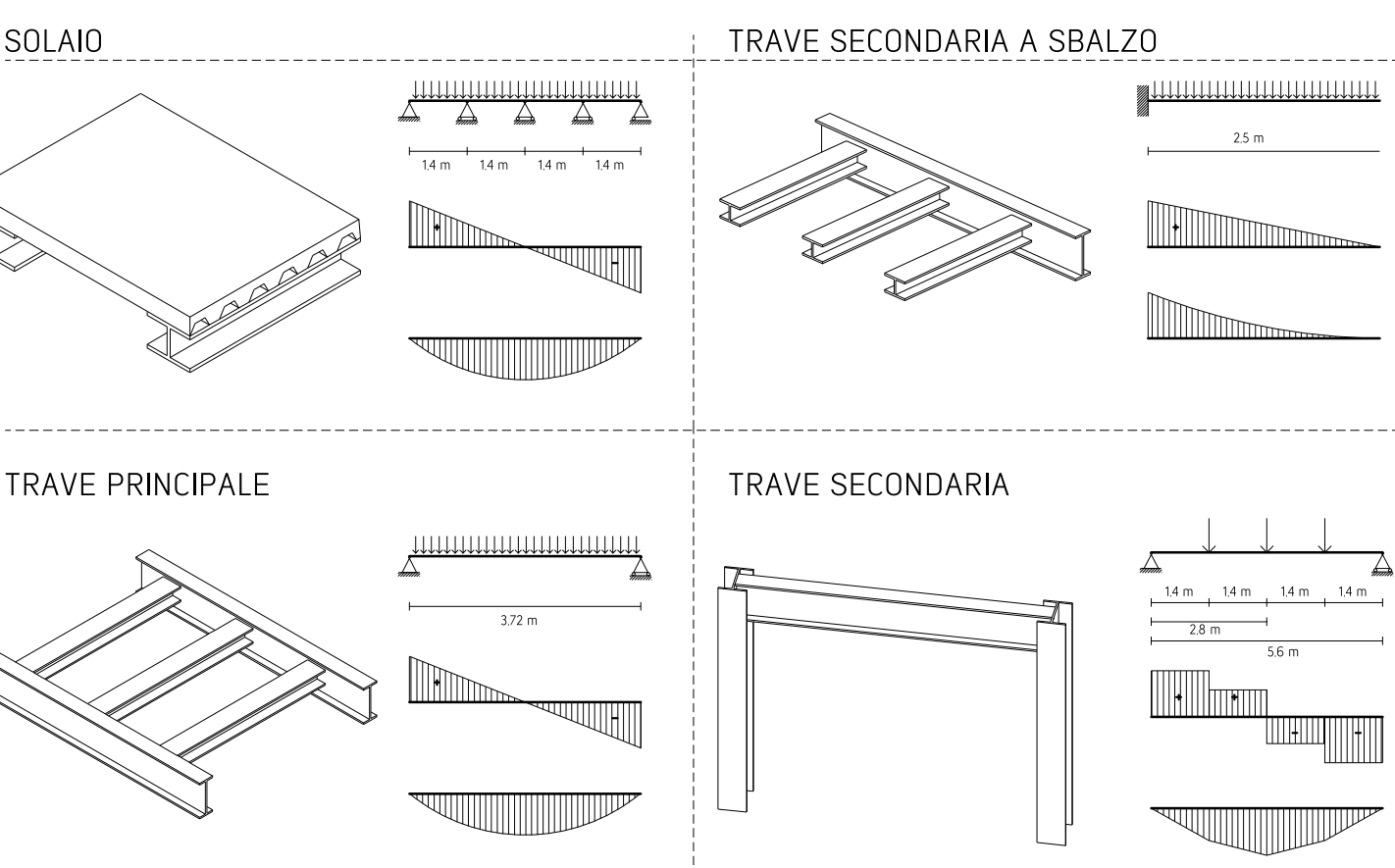
ANALISI DEI CARICHI

Copertura	Interpiano
>strutturali 3 KN	>strutturali 3 KN
>accidentali 3 KN	>non strutturali 3 KN
>carico della neve 1.3 KN	>accidentale 3 KN
7.3 KN	9 KN

SOLAIO DI INTERPIANO

- flottante Knauf (220mm) 27 Kg/m²
- lamiera Solac (90 mm) 10.47 Kg/m²
- telaio di sostegno 2 Kg/m²
- controssofitto 30 Kg/m²
- tramezzi 100 Kg/m²

SCHEMI STATICI



VERIFICHE AGLI STATI LIMITE per elementi soggetti a flessione

	Mmax(KNm)	Wpl(cm ³)	Profilo	TOKN ¹
SOLAIO copertura	129	941	HEA 55 sp 0.7	—
SOLAIO interpiano	221	1163	HEA 100	1925
TRAVE SECONDARIA A SBALZO	23.83	106.5	HEA 100	1925
TRAVE SECONDARIA	2679	1331	HEA 100	3263
TRAVE PRINCIPALE	2741	1224	HEB 300	9456

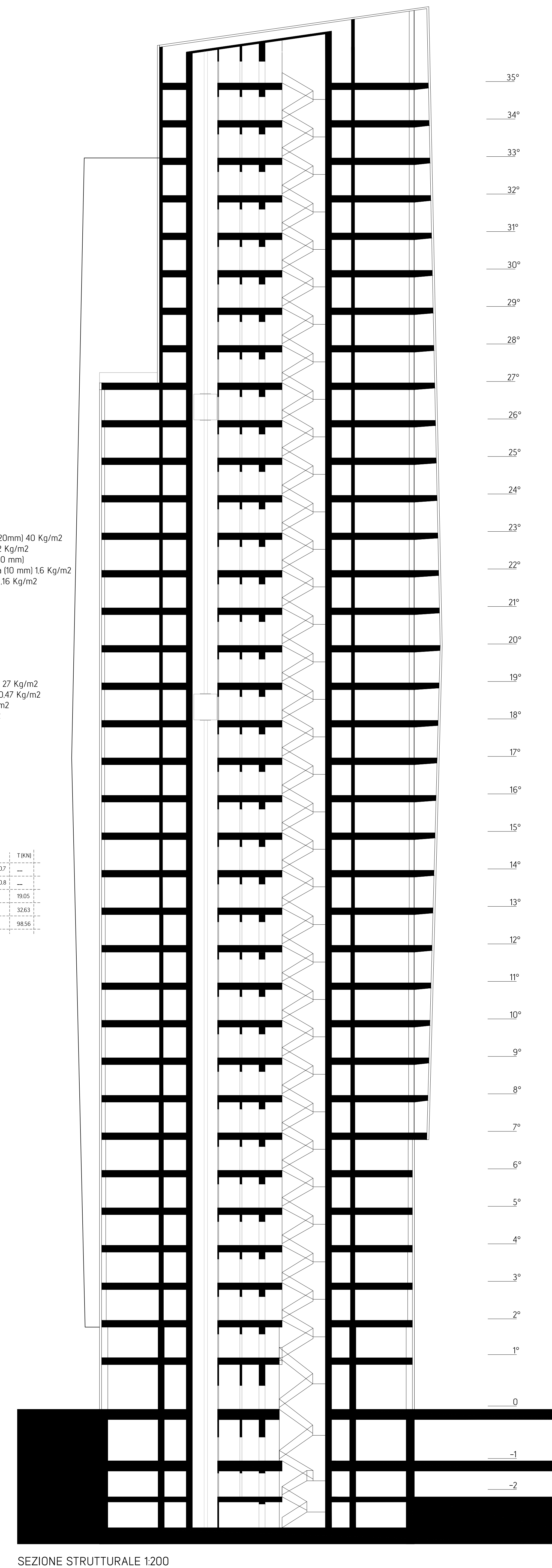
	δ totale (cm)	δ variabile (cm)
SOLAIO copertura	0.05	0.04
SOLAIO interpiano	0.05	0.03
TRAVE SECONDARIA A SBALZO	0.14	0.04
TRAVE SECONDARIA	1.3	0.4
TRAVE PRINCIPALE	1.51	1

PROFILI COLONNE

13°-35° PIANO	HEB 300 Wpl = 1869 cm ³ Jy = 8563 cm ⁴ p = 117 KN/m A = 149.1 cm ² b = 30 cm h = 30 cm tw = 11 cm tf = 19 cm r = 27 cm
8°-13° PIANO	HEB 360 Wpl = 3232 cm ³ Jy = 10820 cm ⁴ p = 142 KN/m A = 180.6 cm ² b = 30 cm h = 36 cm tw = 12.5 cm tf = 2.25 cm r = 27 cm
4°-7° PIANO	HEB 400 Wpl = 3232 cm ³ Jy = 10820 cm ⁴ p = 155 KN/m A = 197.8 cm ² b = 45 cm h = 40 cm tw = 1.35 cm tf = 2.4 cm r = 27 cm
1°-3° PIANO	HEB 450 Wpl = 3982 cm ³ Jy = 11720 cm ⁴ p = 171 KN/m A = 218 cm ² b = 45 cm h = 30 cm tw = 1.4 cm tf = 2.6 cm r = 27 cm
PIANO TERRA	HEB 600 Wpl = 6425 cm ³ Jy = 18530 cm ⁴ p = 212 KN/m A = 270 cm ² b = 60 cm h = 30 cm tw = 1.55 cm tf = 3 cm r = 27 cm

DISCESA CARICHI

	CARICO (kn/m ²)	AREA INFLUENZA (m ²)	N. navi	Ned (kn)
35°	9.04	7.0	2.0	253.8
34°	9.04	14.0	3.0	390.0
33°	9.04	14.0	3.0	528.0
32°	9.04	14.0	3.0	665.1
31°	9.04	14.0	3.0	802.2
30°	9.04	14.0	3.0	939.2
29°	9.04	14.0	3.0	1076.3
28°	9.04	14.0	3.0	1213.4
27°	9.04	14.0	3.0	1350.5
26°	9.04	14.0	3.0	1487.5
25°	9.04	14.0	3.0	1624.6
24°	9.04	14.0	3.0	1761.7
23°	9.04	14.0	3.0	1898.8
22°	9.04	14.0	3.0	2035.9
21°	9.04	14.0	3.0	2172.9
20°	9.04	14.0	3.0	2310.0
19°	9.04	14.0	3.0	2447.1
18°	9.04	14.0	3.0	2584.2
17°	9.04	14.0	3.0	2721.3
16°	9.04	14.0	3.0	2858.4
15°	9.04	14.0	3.0	2995.4
14°	9.04	14.0	3.0	3132.5
13°	9.04	14.0	3.0	3269.6
12°	9.04	14.0	3.0	3406.7
11°	9.04	14.0	3.0	3543.7
10°	9.04	14.0	3.0	3680.8
9°	9.04	14.0	3.0	3817.9
8°	9.04	14.0	3.0	3955.0
7°	9.04	14.0	3.0	4092.1
6°	9.04	14.0	3.0	4229.1
5°	9.04	14.0	3.0	4366.2
4°	9.04	14.0	3.0	4503.3
3°	9.04	14.0	3.0	4640.4
2°	9.04	14.0	3.0	4777.5
1°	9.04	14.0	3.0	4914.6
0°	9.04	14.0	3.0	5051.7



SEZIONE STRUTTURALE 1:200

TIPO / FORMA / COSTRUZIONE / STRUTTURE