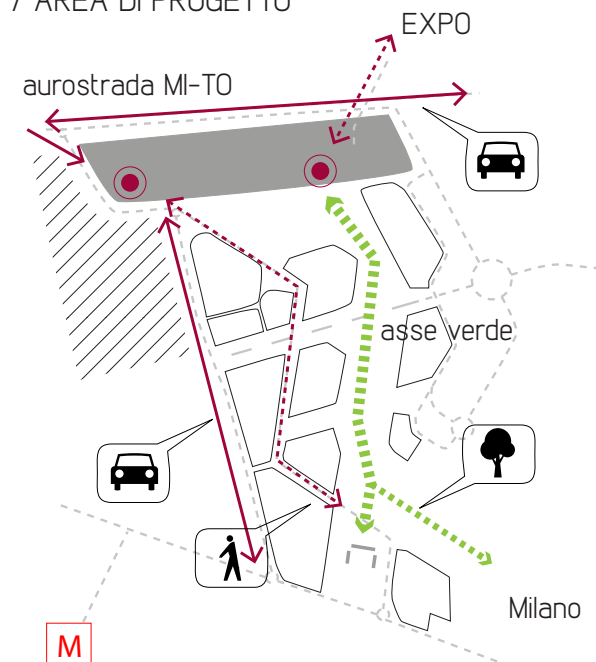
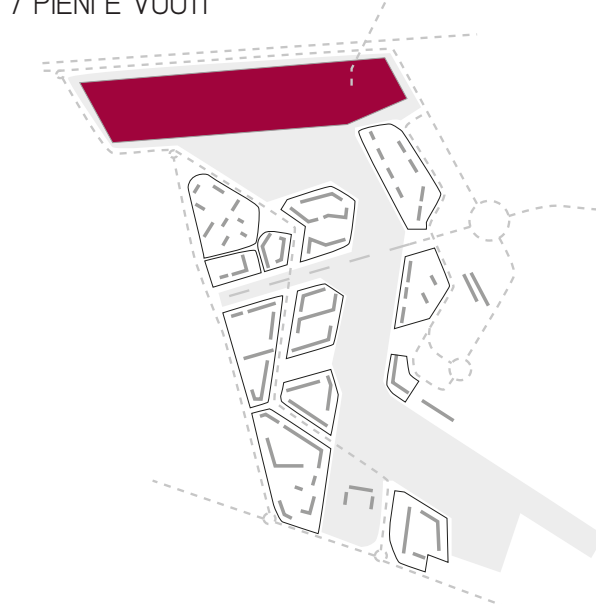


// MASTERPLAN

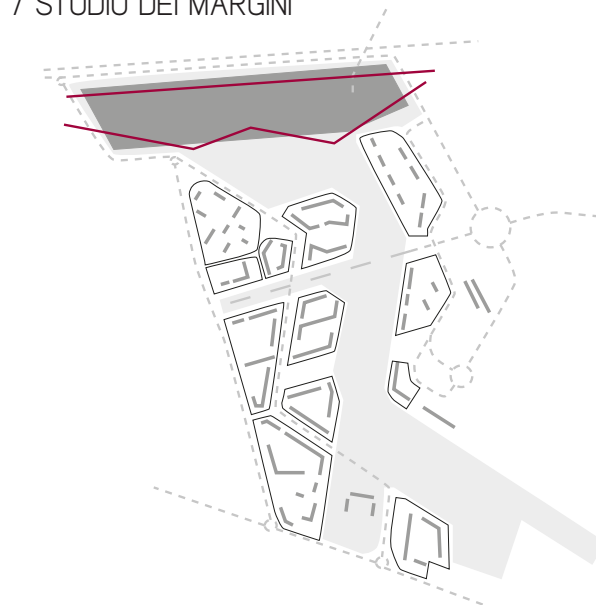
/ AREA DI PROGETTO



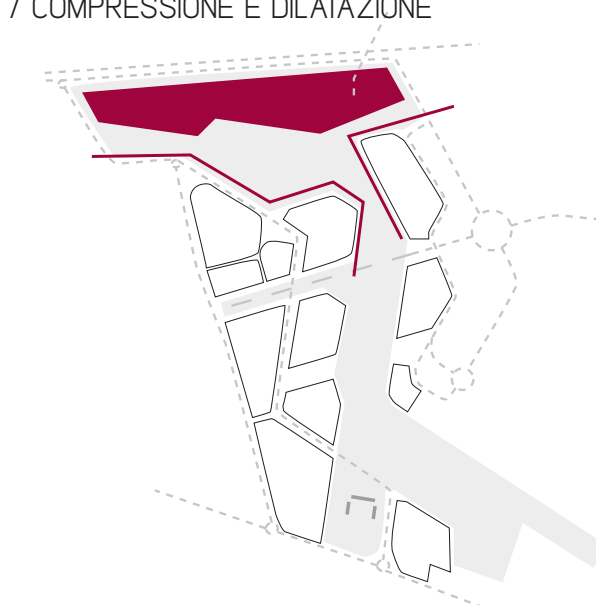
/ PIENI E VUOTI



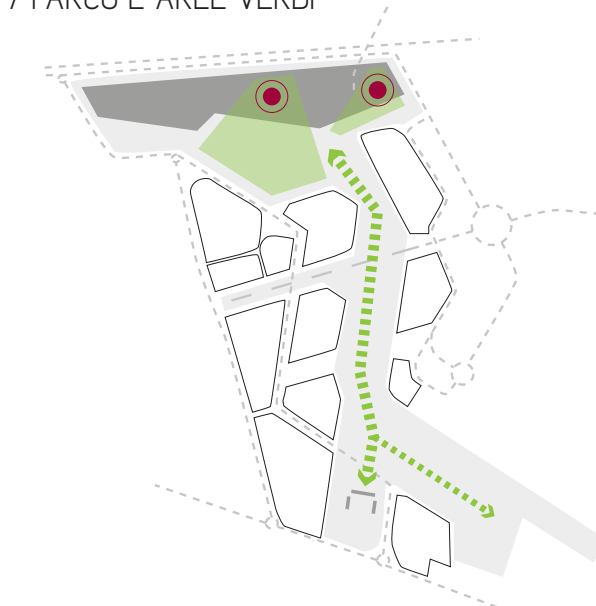
/ STUDIO DEI MARGINI



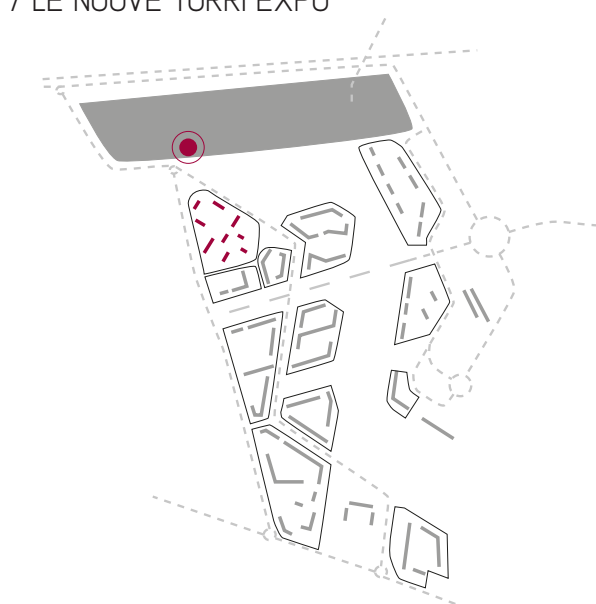
/ COMPRESSIONE E DILATAZIONE



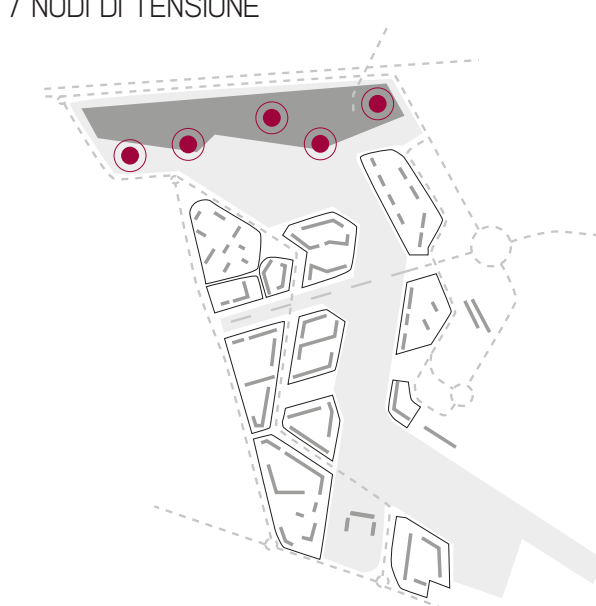
/ PARCO E AREE VERDI



/ LE NUOVE TORRI EXPO



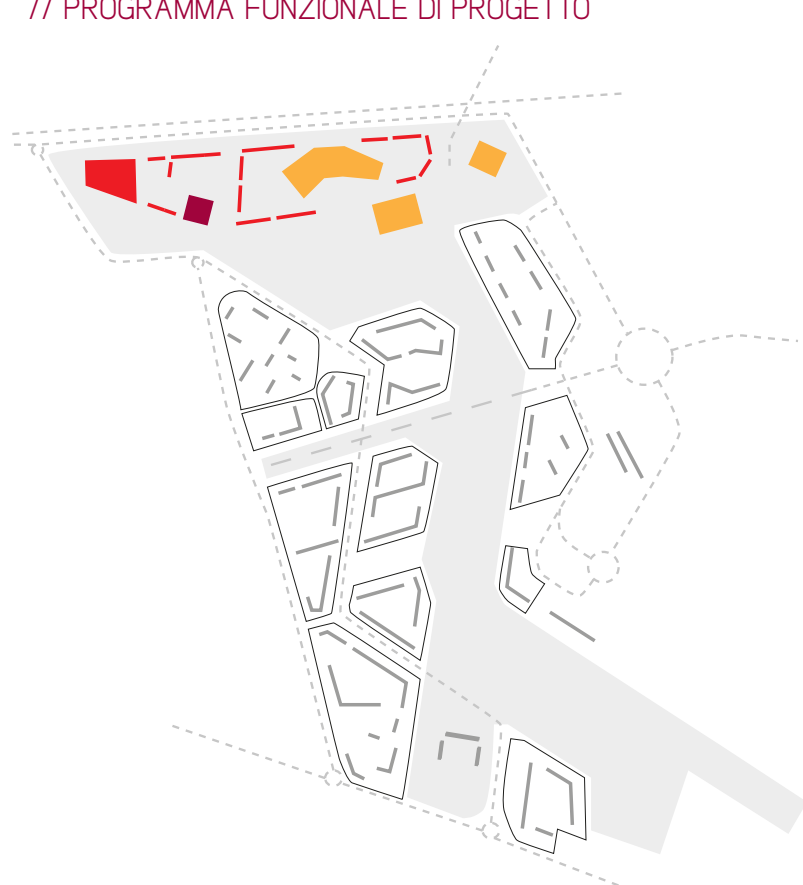
/ NODI DI TENSIONE



/ SISTEMA INSEDIATIVO / ...

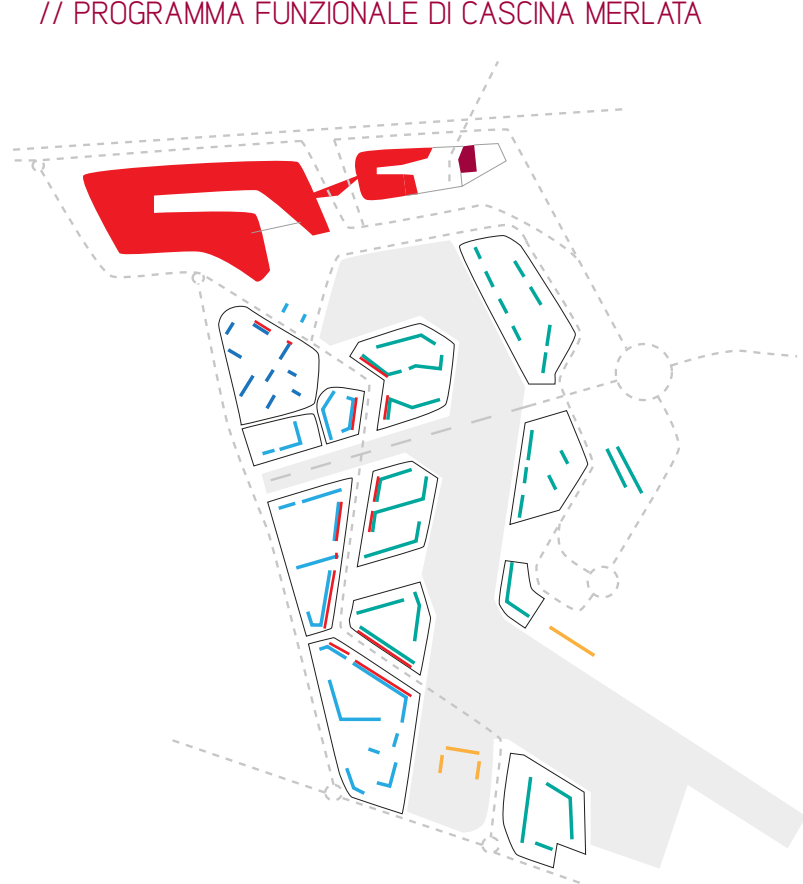


// PROGRAMMA FUNZIONALE DI PROGETTO



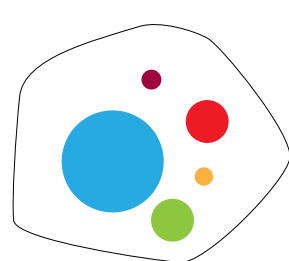
- uffici e commercio
- attrezzature di interesse generale
- hotel

// PROGRAMMA FUNZIONALE DI CASCINA MERLATA

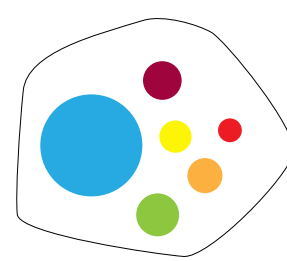


- residenza convenzionata
- residenza libera
- libera/convenzionata
- uffici e commercio
- attrezzature di interesse generale
- hotel

Progetto di Cascina Merlata



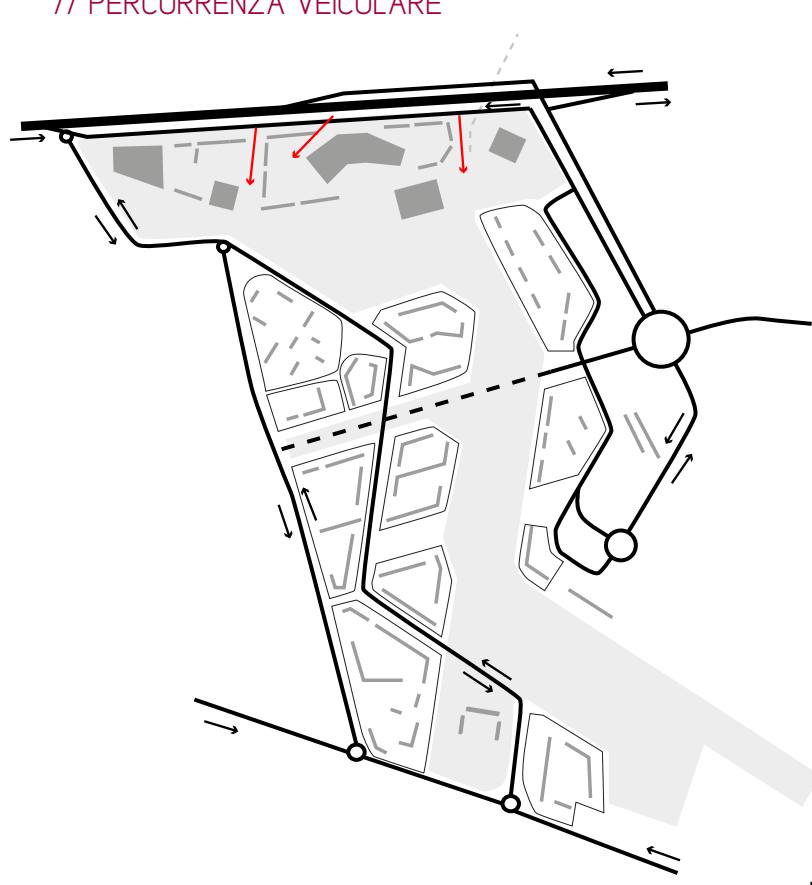
- 80% residenza
- 13% uffici e commercio
- 3% attrezzature di interesse generale
- 4% hotel
- 200'000mq parco



progetto ...

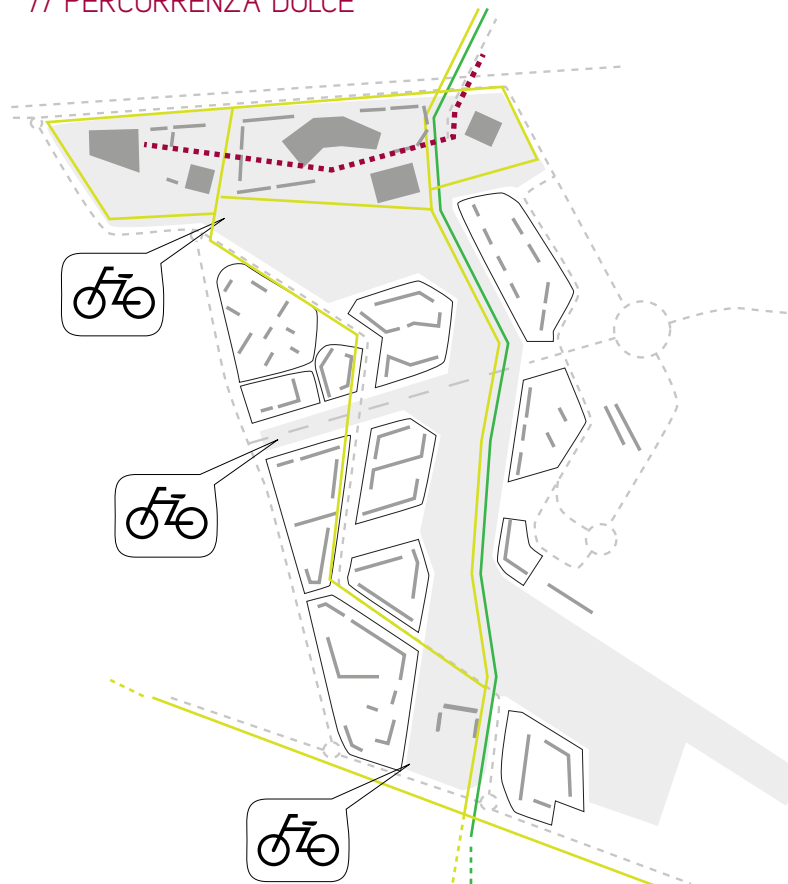
- 80% residenza
- 5% uffici e commercio
- 7% attrezzature di interesse generale
- 8% hotel
- 200'000mq parco
- 56'707mq suolo pubblico

// PERCORRENZA VEICOLARE



- autostrada
- strada interna
- - - sottopasso
- accesso d'emergenza

// PERCORRENZA DOLCE



- raggio verde ciclopedonabile
- pista ciclabile
- ... promenade
- 🚲 stazioni bike-mi

INDAGINE

// LA TORRE TRA EXPO EXPO E CASCINA MERLATA. Una stanza low cost nel cielo di Milano

// Relatore: Prof. Arch. Maria Grazia Folli
 // P.G.Malerba / G.Buzzi / E.Pizzi / P.Oliaro
 // M.Moscatelli / P.Puscaddu / C.Pecora
 // a.a. 2012/2013

A //

Valentina DE PALO / 782555 //
 Serena DI GIULIANO / 770389 //
 Maria GATTO RONCHERO / 770729 //