

WATER ELEMENTS INSIDE THE SITE

AND WE SEPERATED THEM AND MADE FROM WATER EVERY LIVING THING
(THE HOLY QURAN)

ROLE OF WATER IN IRANIAN ARCHITECTURE AND RELIGION



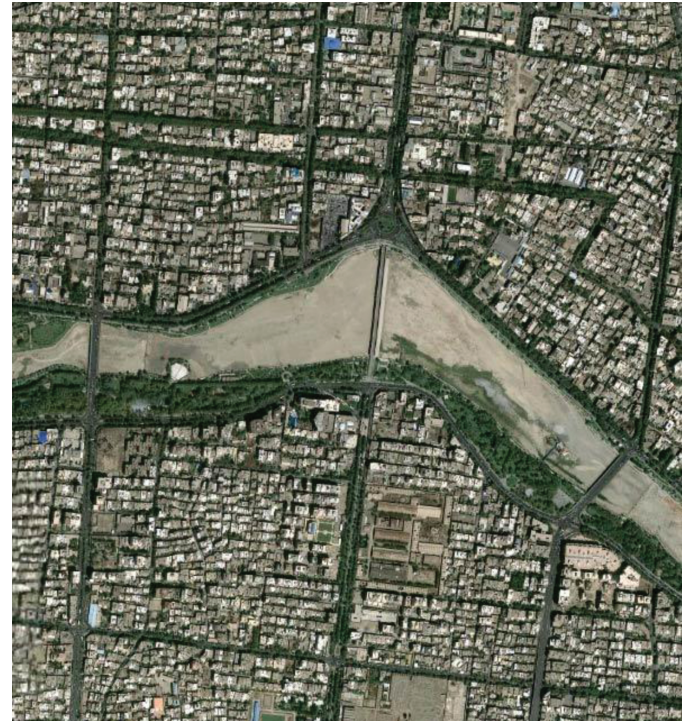
Water is one of fundamental elements in Iranian Architecture since old time. Even in Islamic culture water has been known as a holy elements that every living thing created by. In The architecture is used as a sacred and numinous element in the mosques, also in the Iran's hot and dry climate in is used to humidify and stylized the weather.

In Iranian garden water flow is known as a relaxing element which is soothing the atmosphere.

URBAN SCALE



City of Isfahan



Deeply considering landscape and garden design subject, the formation of Iranian cities and their growth and expansion has taken place in the body of the city considering both structural relation between natural resources as landscape and city in different scales.

URBAN SCALE



City of Isfahan

By this kind of multi-scale planning the city of Isfahan transformed from an arid area to a sustainable green city.

HISTORICAL GARDENS



Fin Garden, City of Kashan



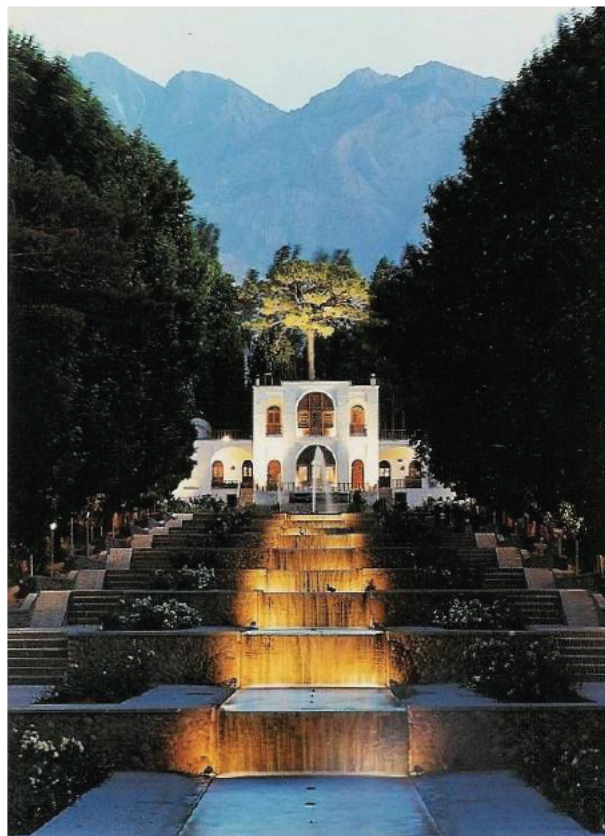
Fin Garden, City of Kashan

Historical cities of Iran has always welcomed gardens inside of themselves and the existence way of garden in cities has different dimensions and depending on weather condition, environment and culture they have got different forms. One of the important characteristics of Iranian Garden was its high inclination to show water.

HISTORICAL GARDENS



Shazdeh Garden, City of Mahan



Shazdeh Garden, City of Mahan

HISTORICAL HOUSES



Brojerdi House, City of Kashan

HISTORICAL HOUSES



Brojerdi House, City of Kashan

HISTORICAL HOUSES



Abbasian House, City of Kashan

HISTORICAL HOUSES



Abbasian House, City of Kashan

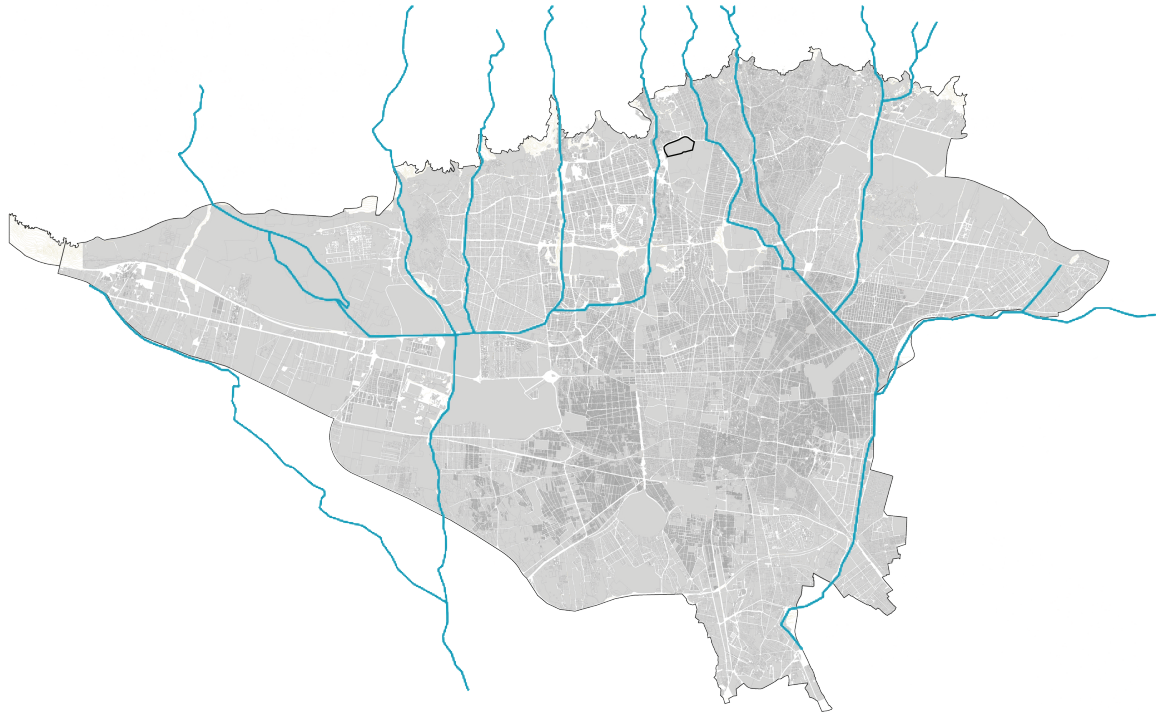
MOSQUE



Nasir al Molk Mosque, City of Shiraz

ANALYSES FROM THE CITY TO THE SITE

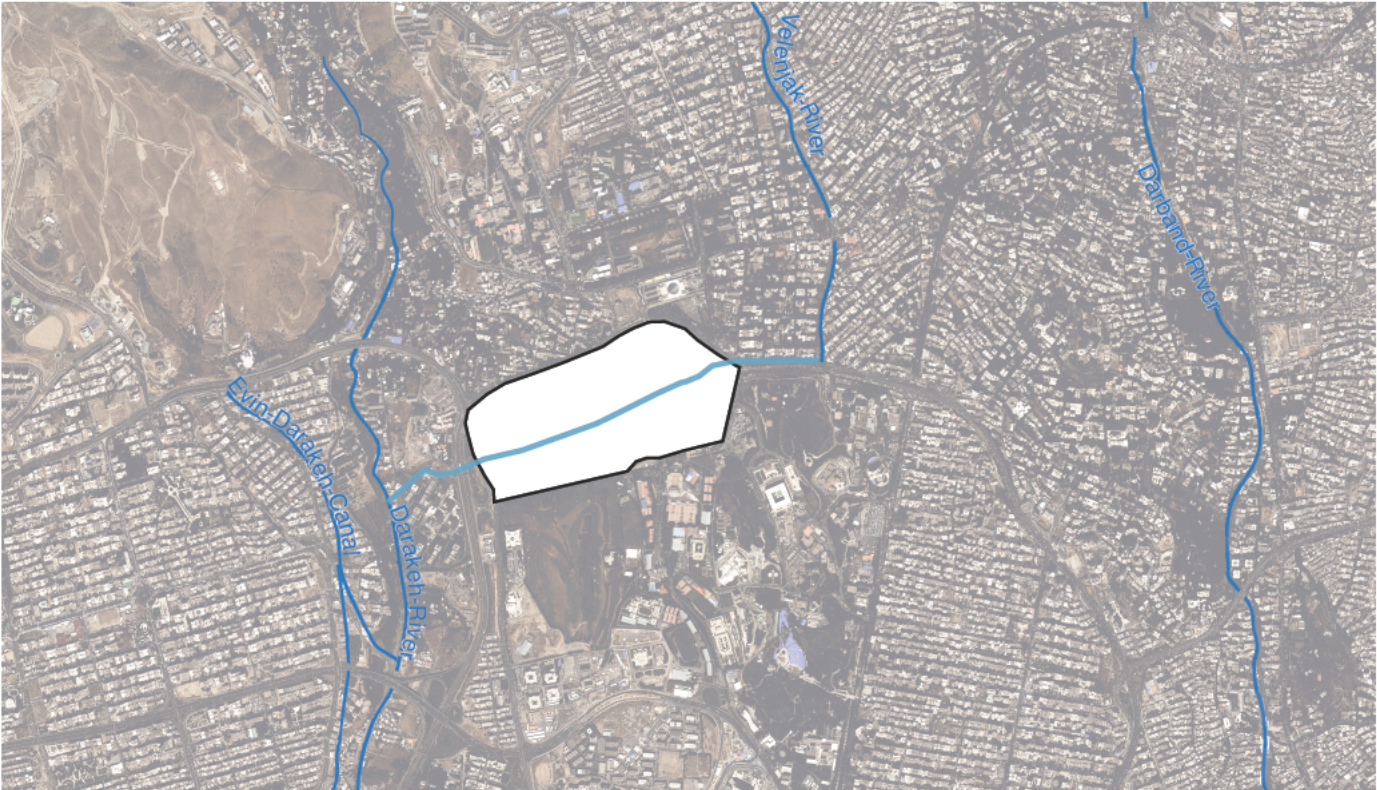
WATER SYSTEM IN THE CITY



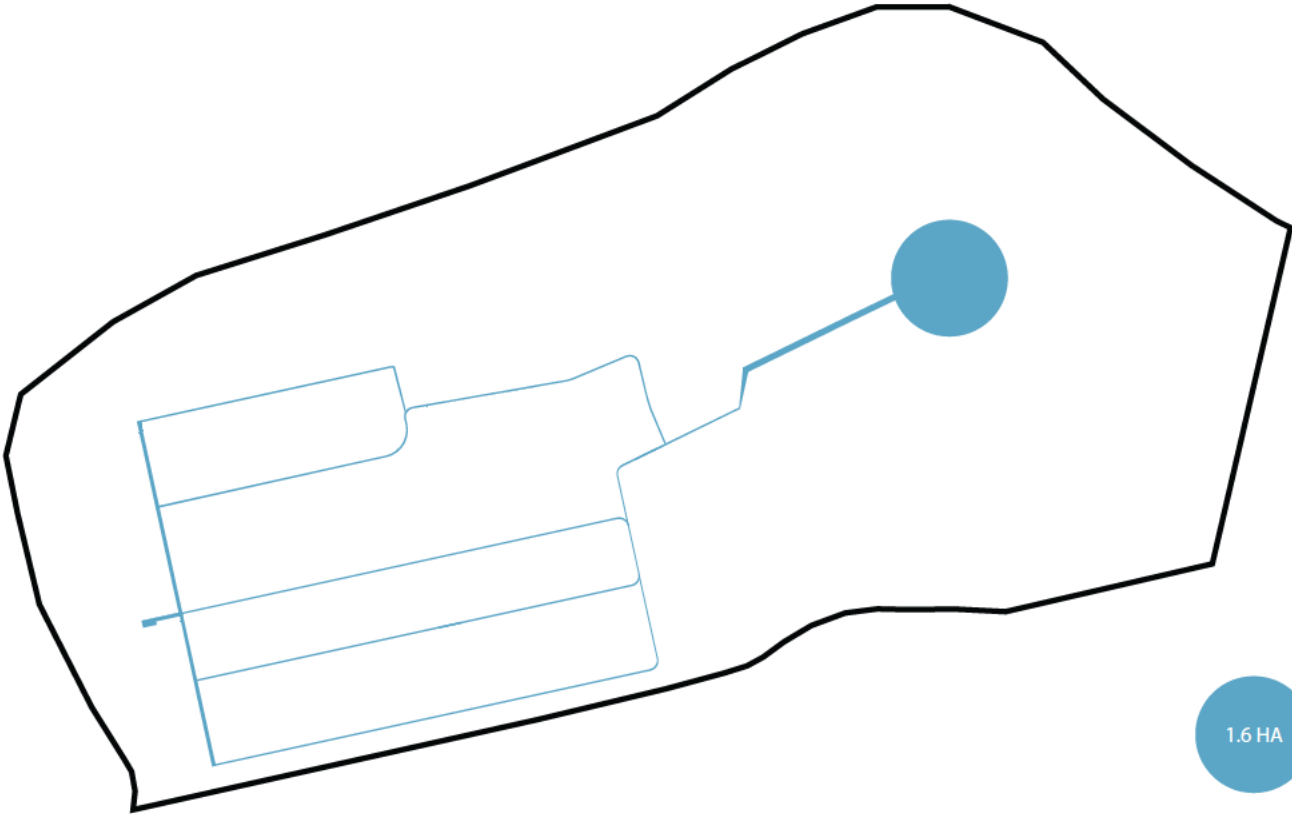
Tehran has the advantages of different rivers and canals. Most of them start from the mountains in the northern part of the city and continue among the city. They are joining to each other and in the southern part of the city there are two rivers left but larger.

Post Expo site has privilege of two different canals in the west and east sides. This becomes an idea of using water elements inside the site.

CONNECTION BETWEEN RIVERS



WATER SYSTEM IN THE POST EXPO SITE



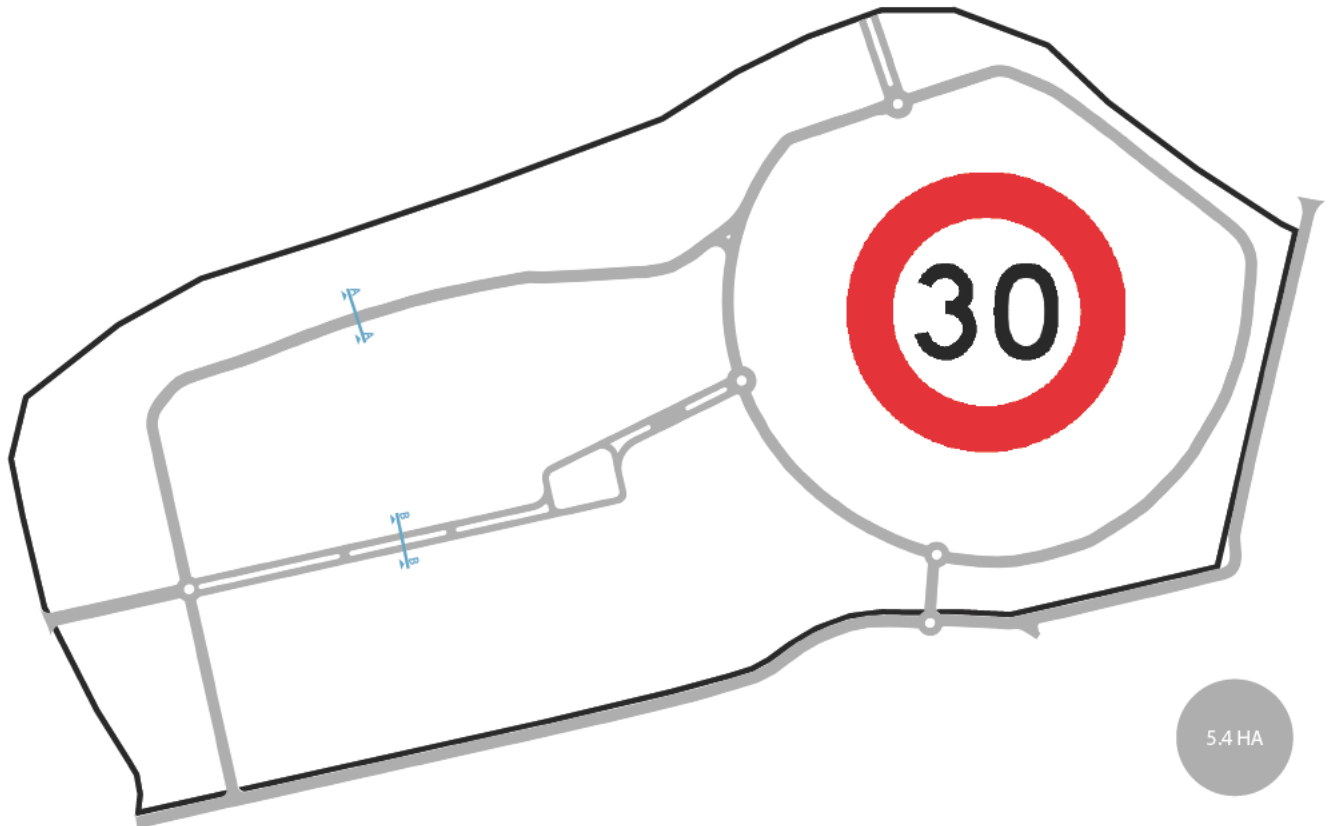
1.6 HA

L: 3200 m



ROADS HIERARCHY INSIDE THE SITE

ROADS



To be more responsible to sustainability, most of the roads are design on the old paths.
Two different types of roads are provided in the site. All the roads have speed restriction of 30 kilometer per hour.

SECTION A - A



Scale: 1/150

SECTION B - B



Scale: 1/150

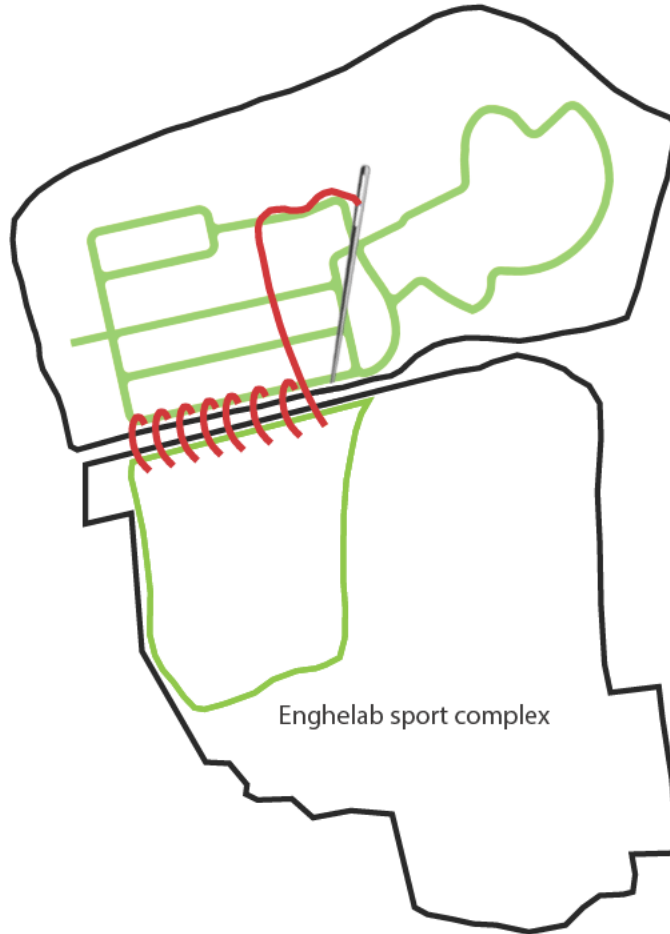


THE GREEN PATH, UNIQUE IDENTITY

ENGHELAB SPORT COMPLEX



SEWING TWO NEIGHBORHOODS



Southern neighborhood of the Post Expo site is Enghelab sport complex which is a semi-private leisure center. Its annually Membership due is approximately high for the middle class of the city.

The idea of green path is an opportunity for the city to experience an absorbing atmosphere without any expenses.

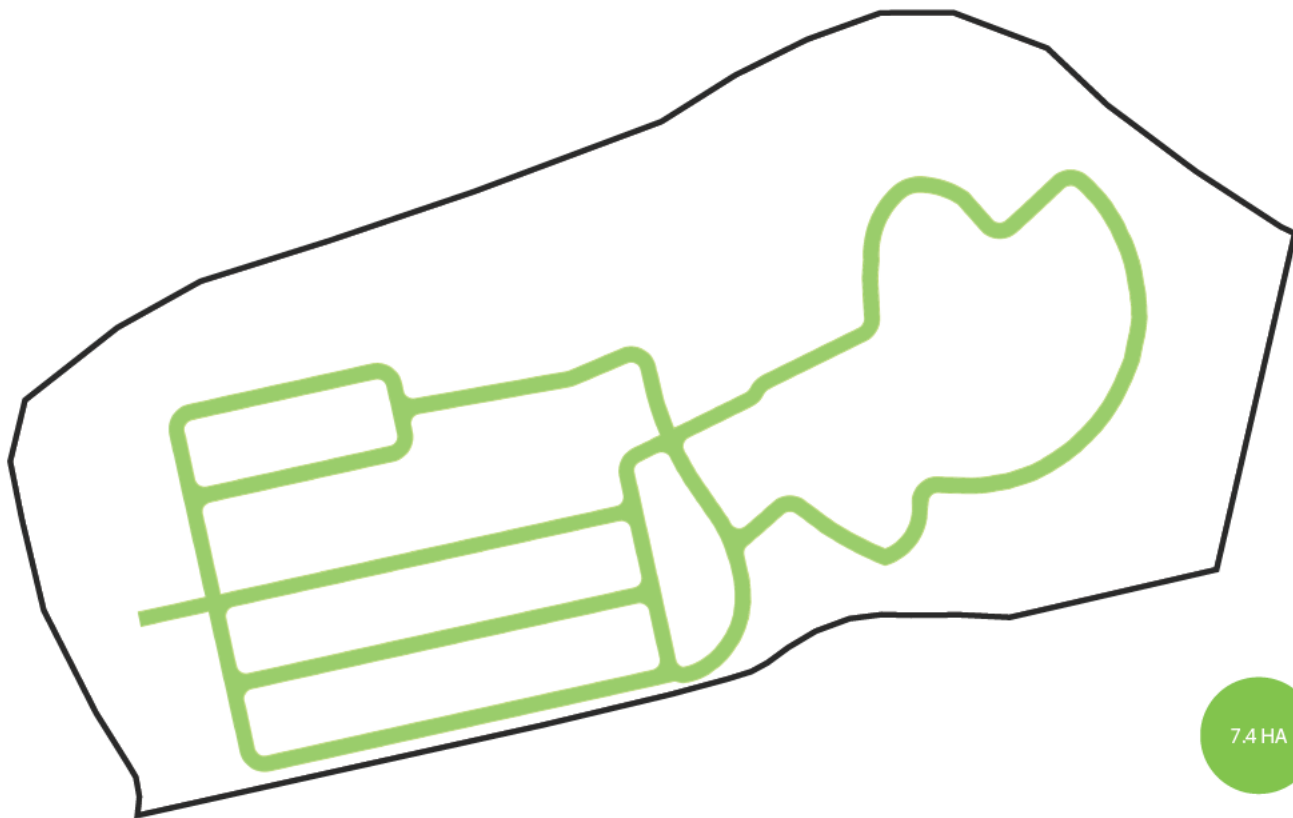
Also the green pedestrian path is a solution to connect both sites.

A unique identity which everyone can enjoy from every corner of the city.

The privilege of public path may motivate the proprietors of Enghelab sport complex to connect it to Post Expo site.

To avoid monotony the path has three different types which are repeating frequently.

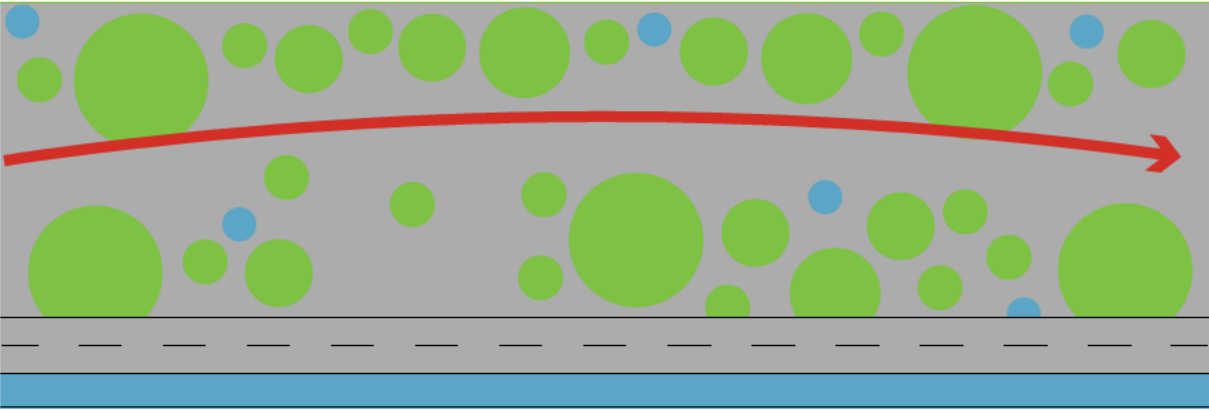
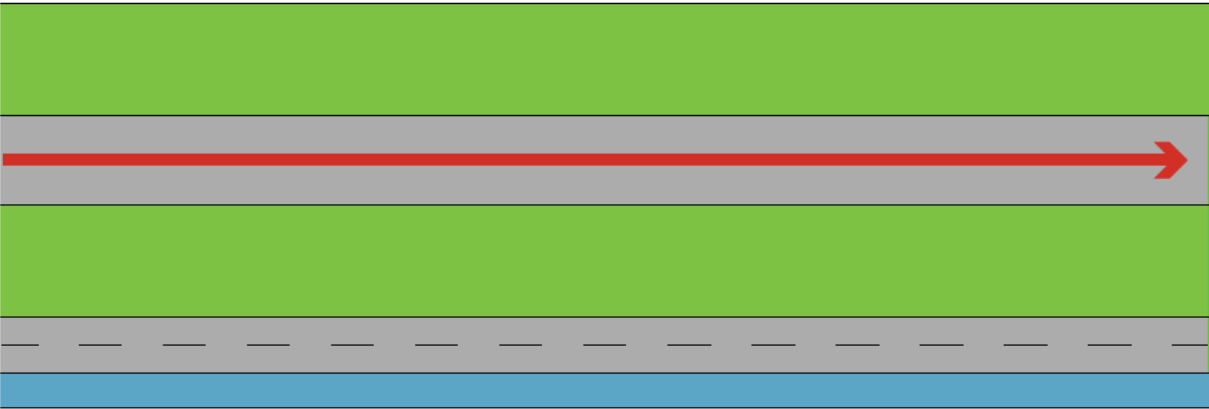
Each type creates distinct leisure experiences for the users and have diversity in spatial organization.



7.4 HA

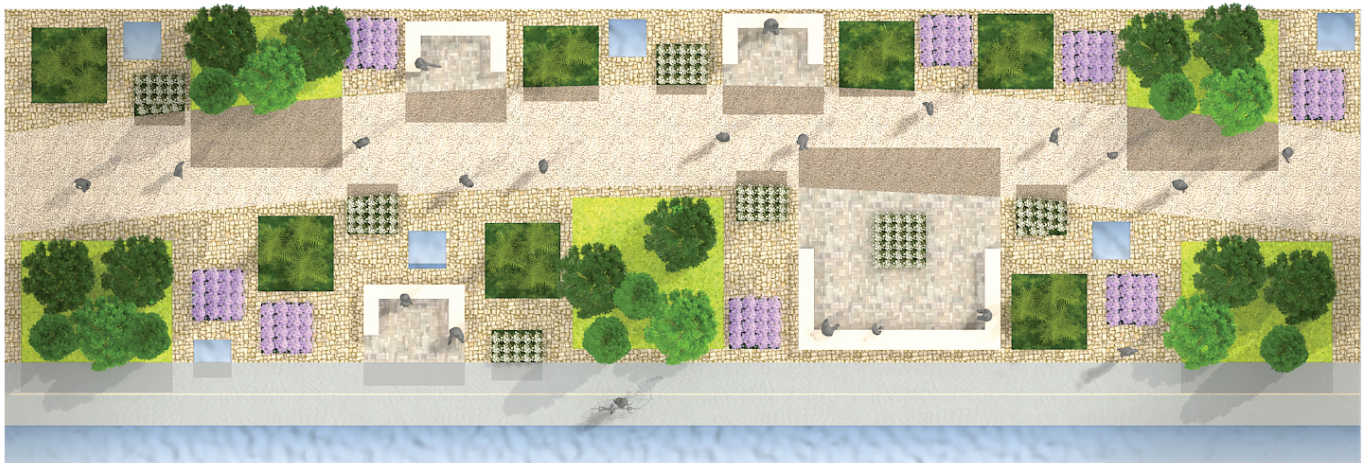
L: 4500 m

DIVERSITY IN SPATIAL ORGANIZATION



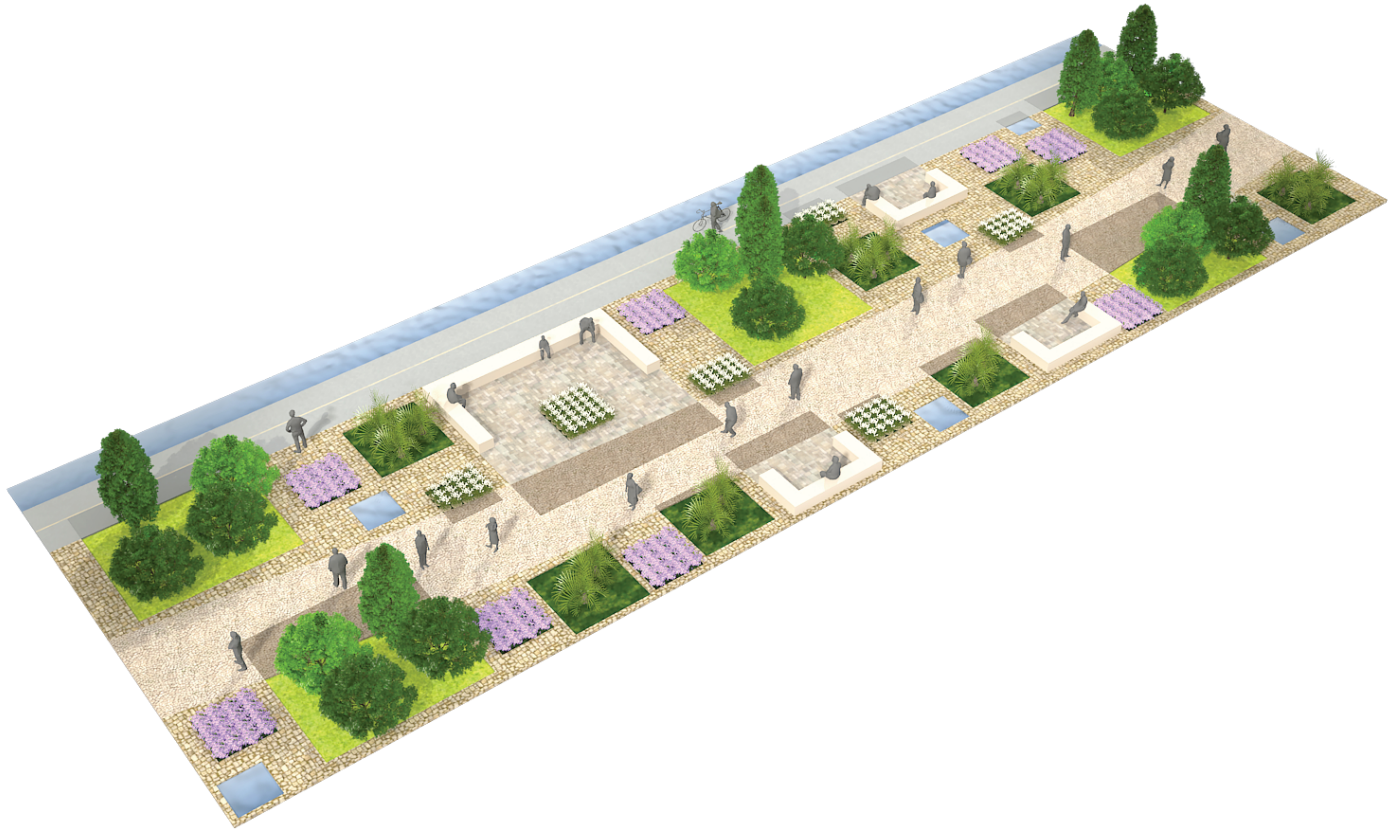
Scale: 1/250

TYPE 1



Scale: 1/250

TYPE 1



TYPE 1



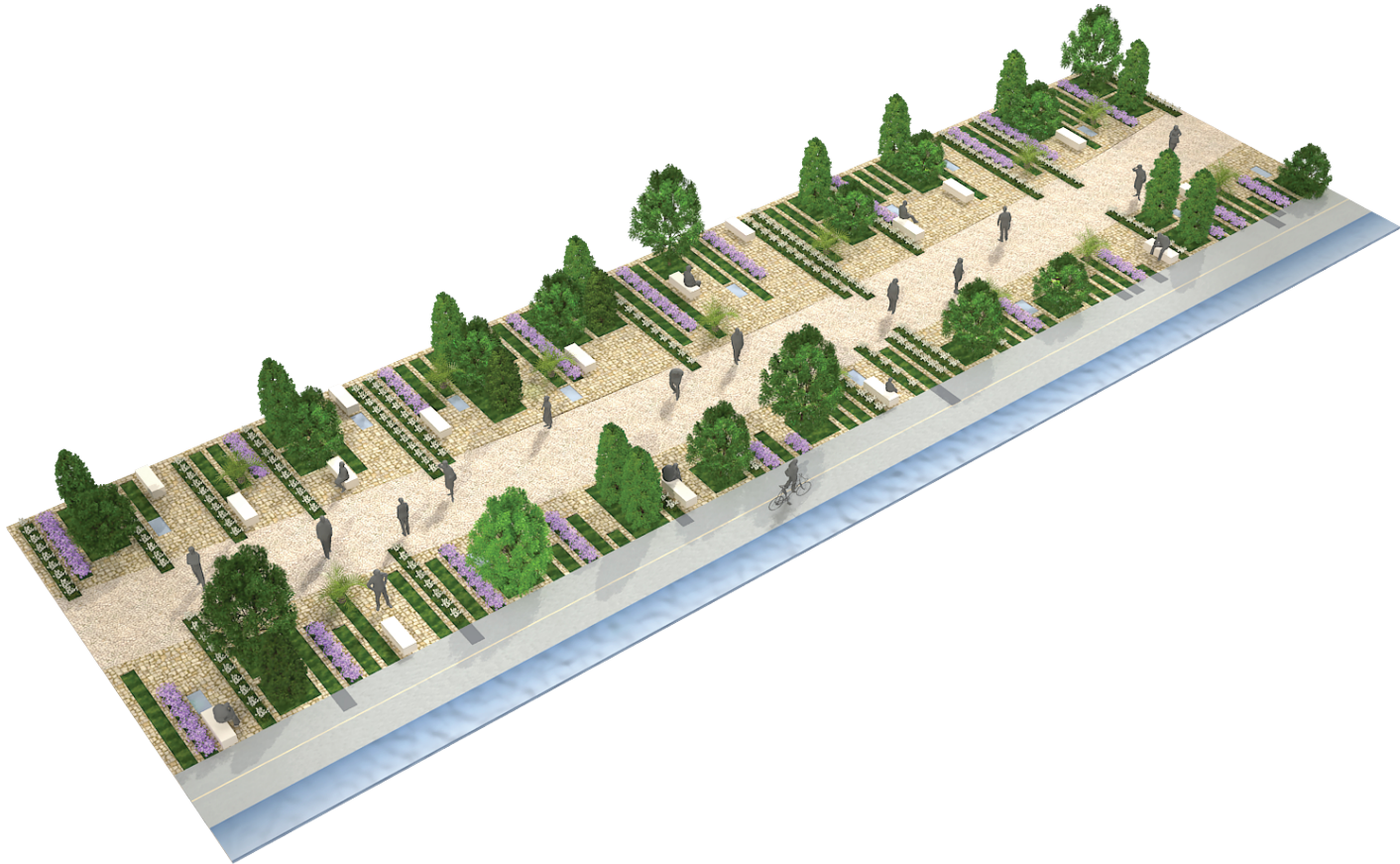
TYPE 2



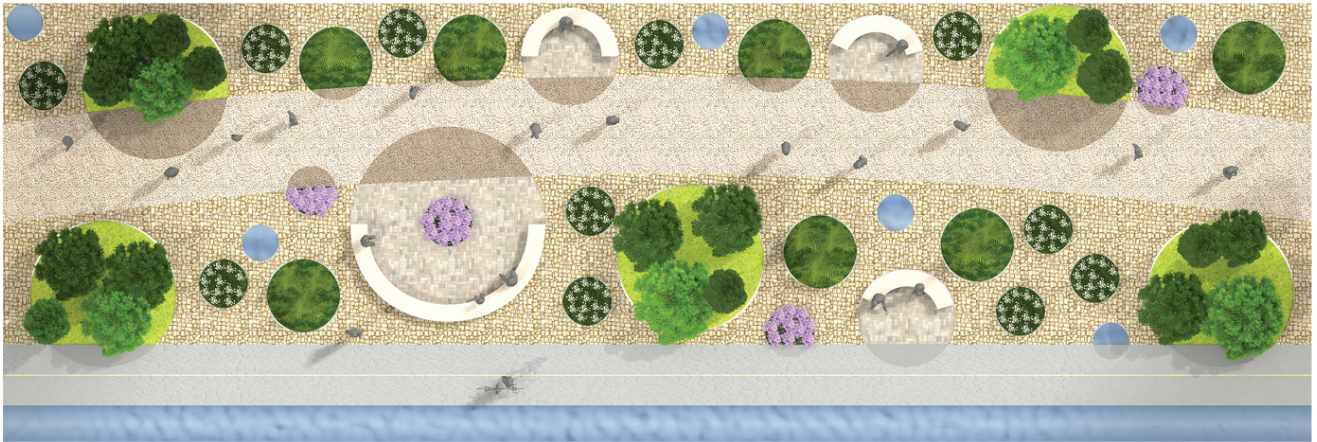
TYPE 2



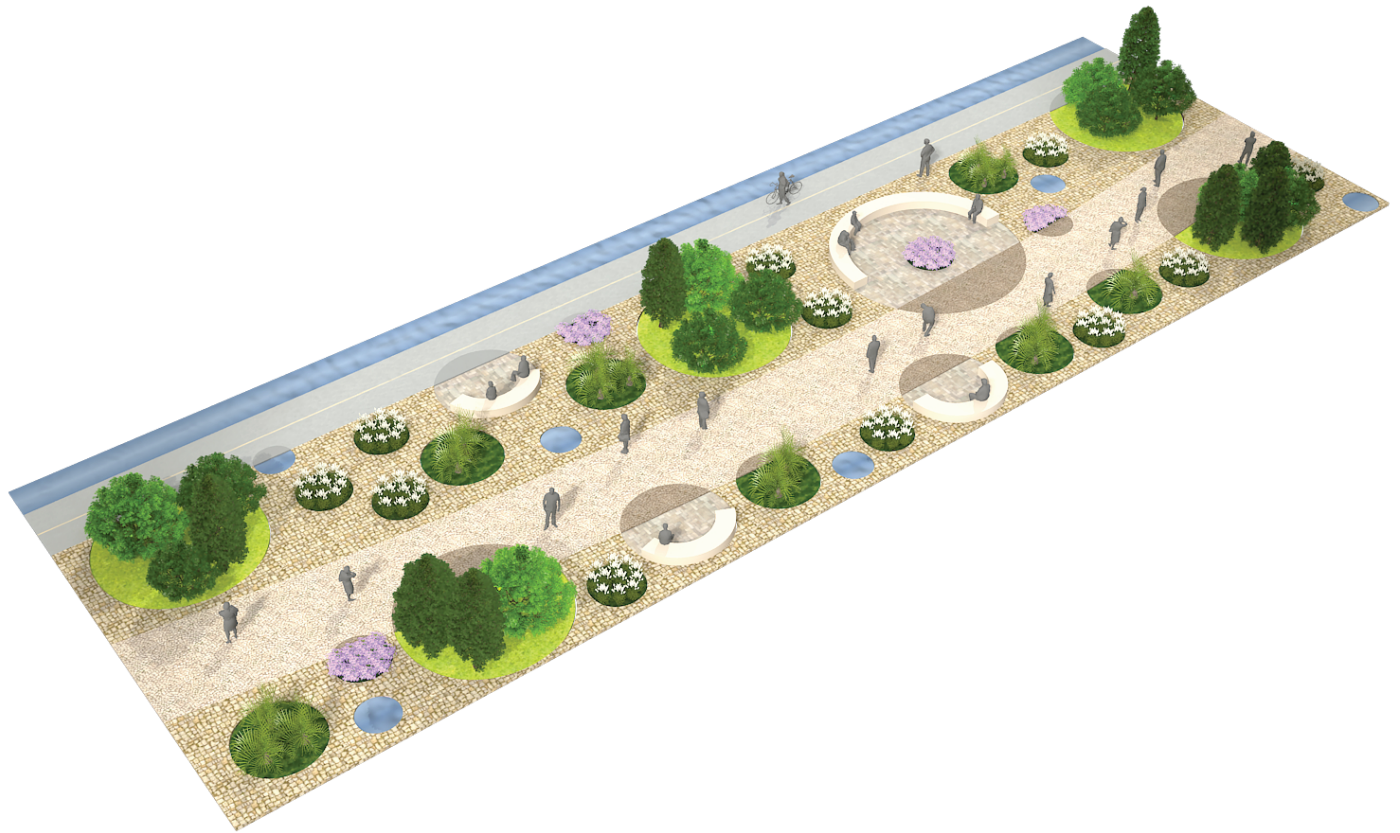
TYPE 2



TYPE 3



TYPE 3



TYPE 3





