

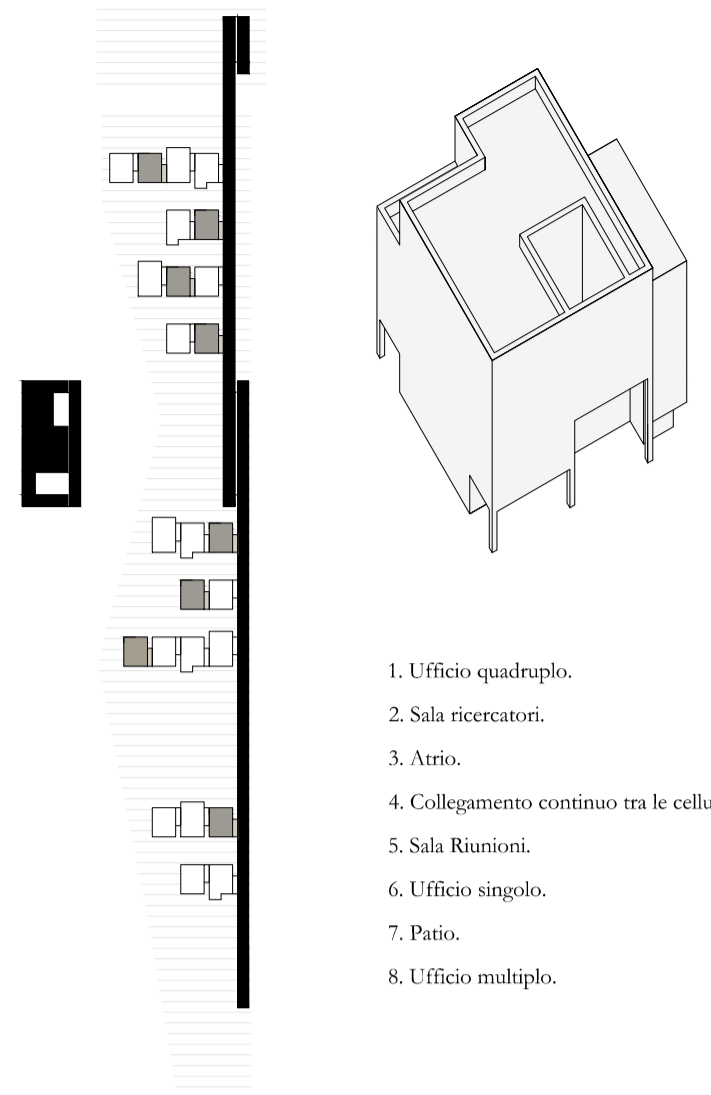
CELLULA [B] UFFICI DI DIPARTIMENTO

POLITECNICO DI MILANO
 Scuola di Architettura e Società
 Laurea Magistrale in Architettura
 A.A. 2012-2013

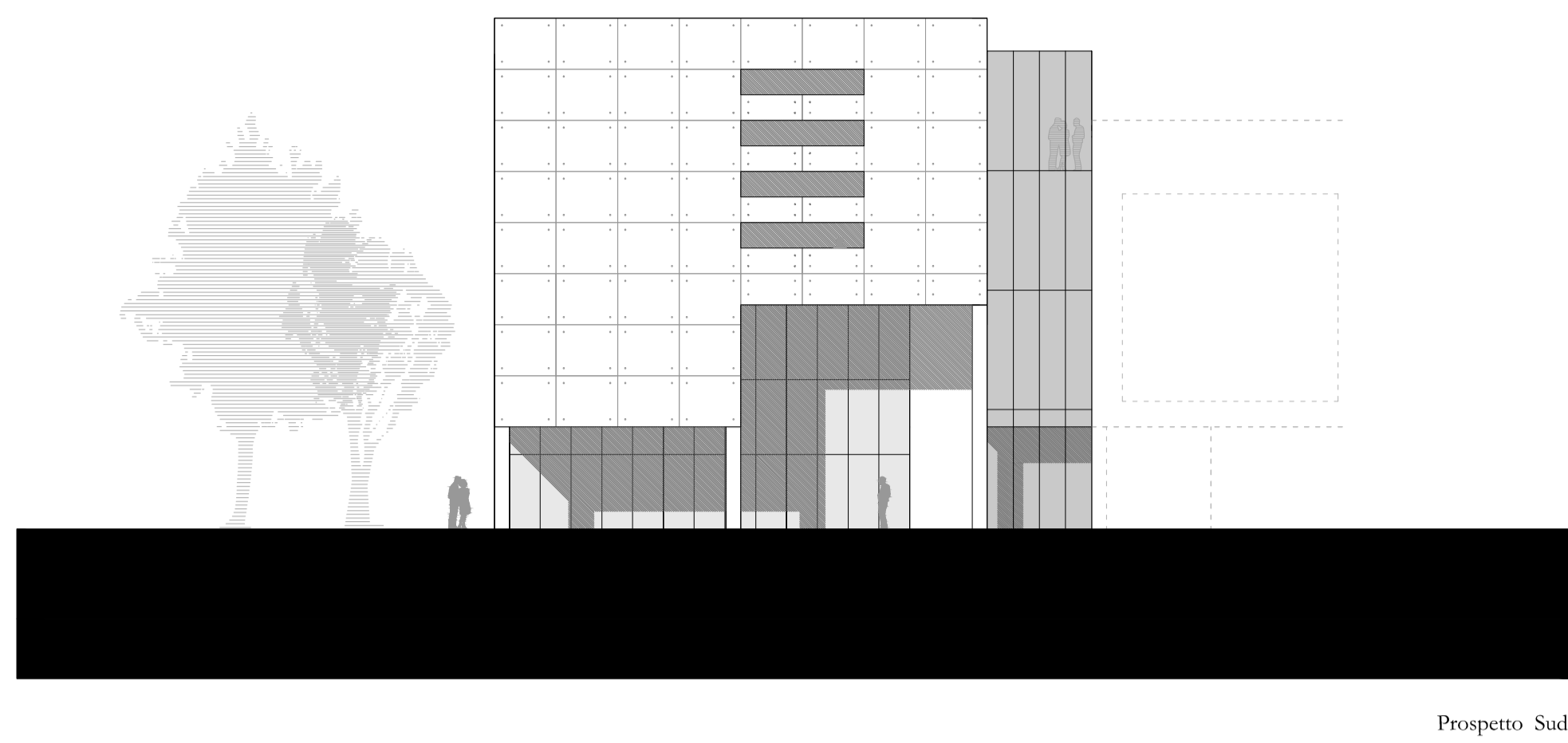
Relatore: prof.ssa Iliana Valente
 Correlatore: arch. Mauro Marinelli
 Laureanda: BIANCA PROCCINO 780869

**COSTRUIRE LO SPAZIO
 URBANO NEL TEMPO**
 Architettura del Campus Condorcet a Parigi

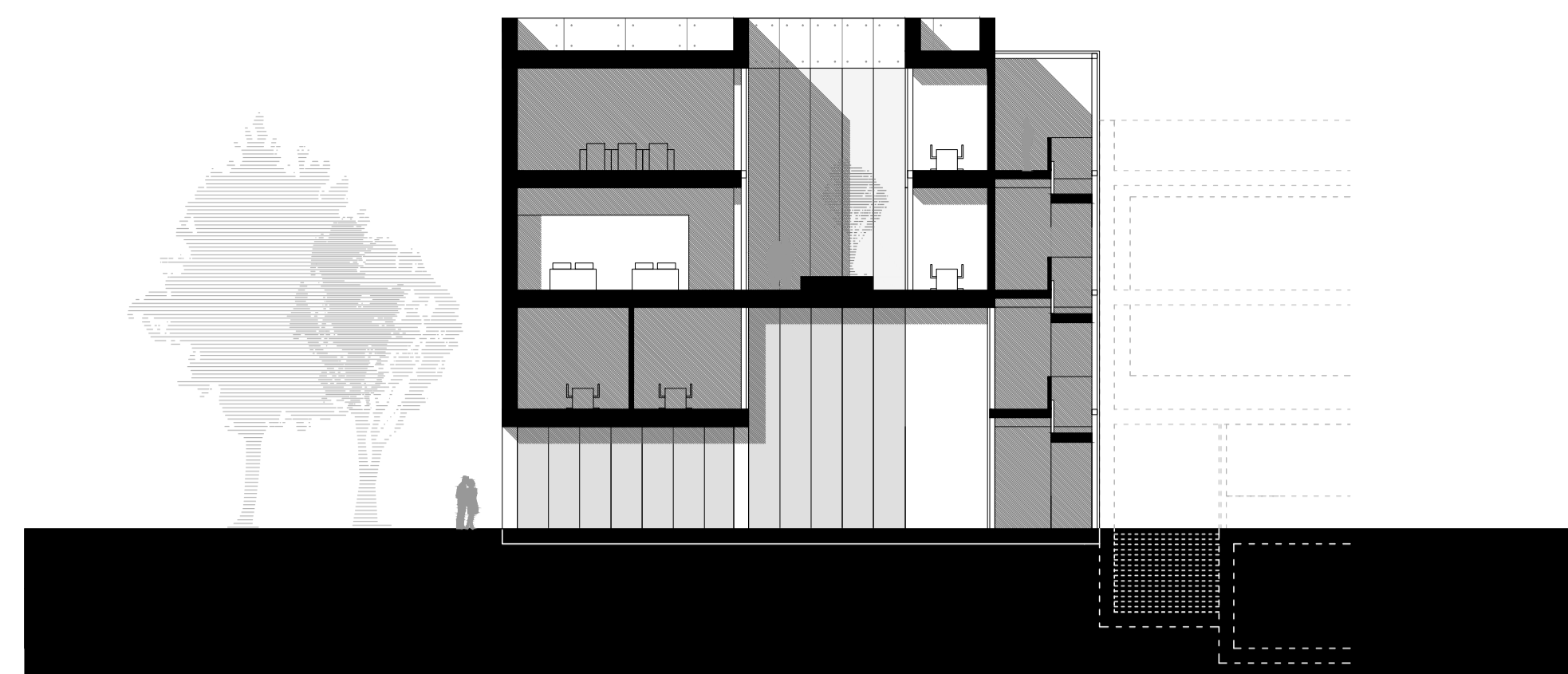
Cellula [B] - Uffici di Dipartimento
 Pianta 1:200
 Prospetti 1:200
 Sezioni 1:200



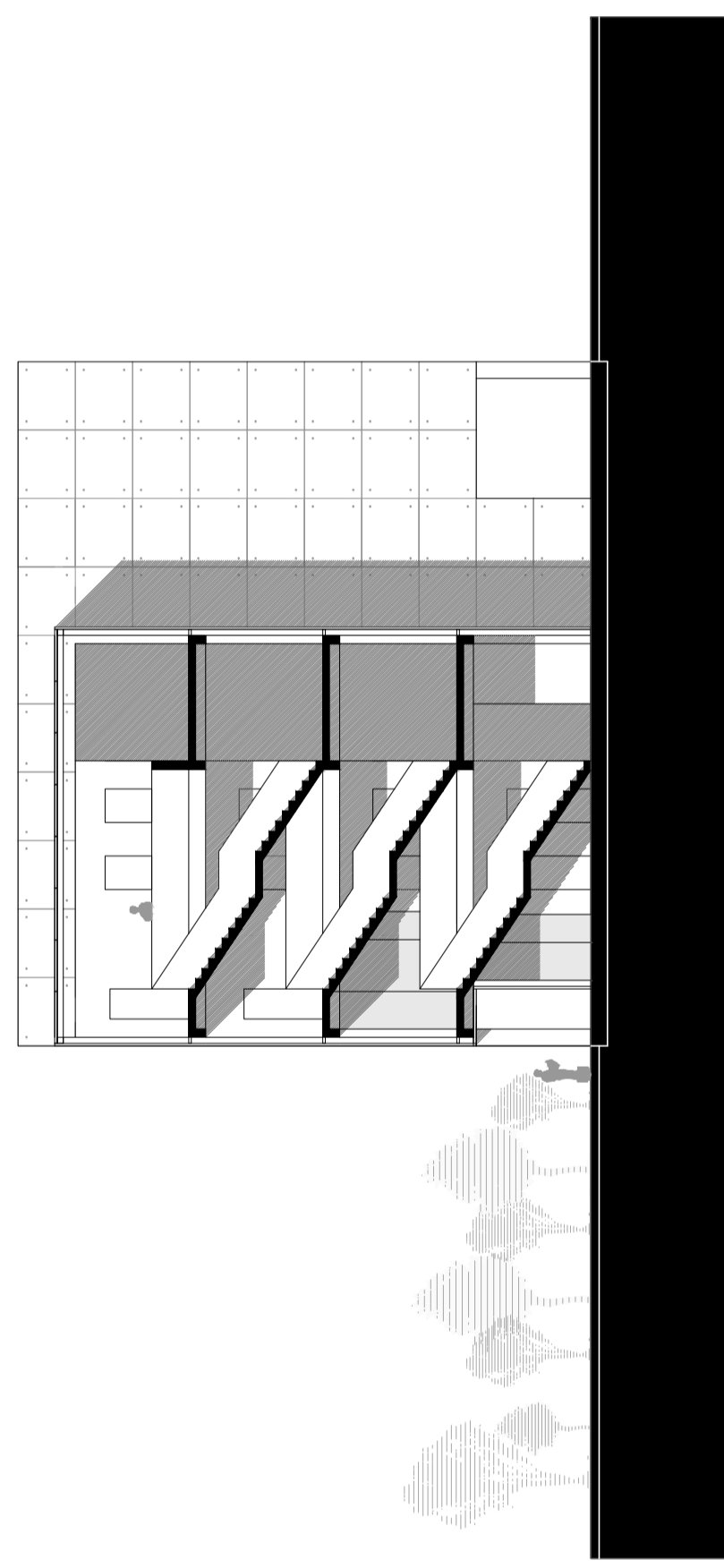
1. Ufficio quadruplo.
2. Sala ricercatori.
3. Atrio.
4. Collegamento continuo tra le cellule.
5. Sala Riunioni.
6. Ufficio singolo.
7. Patio.
8. Ufficio multiplo.



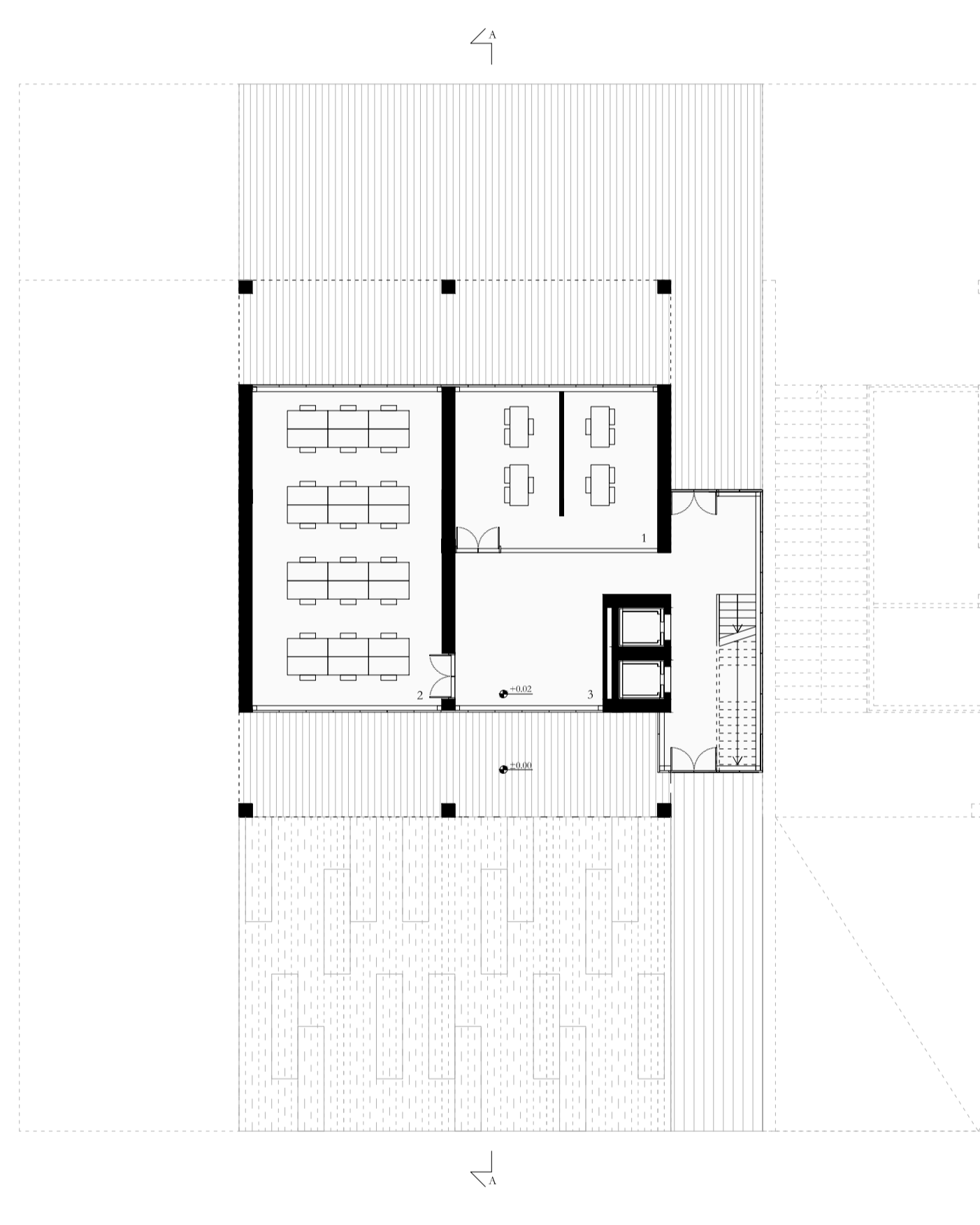
Prospetto Sud



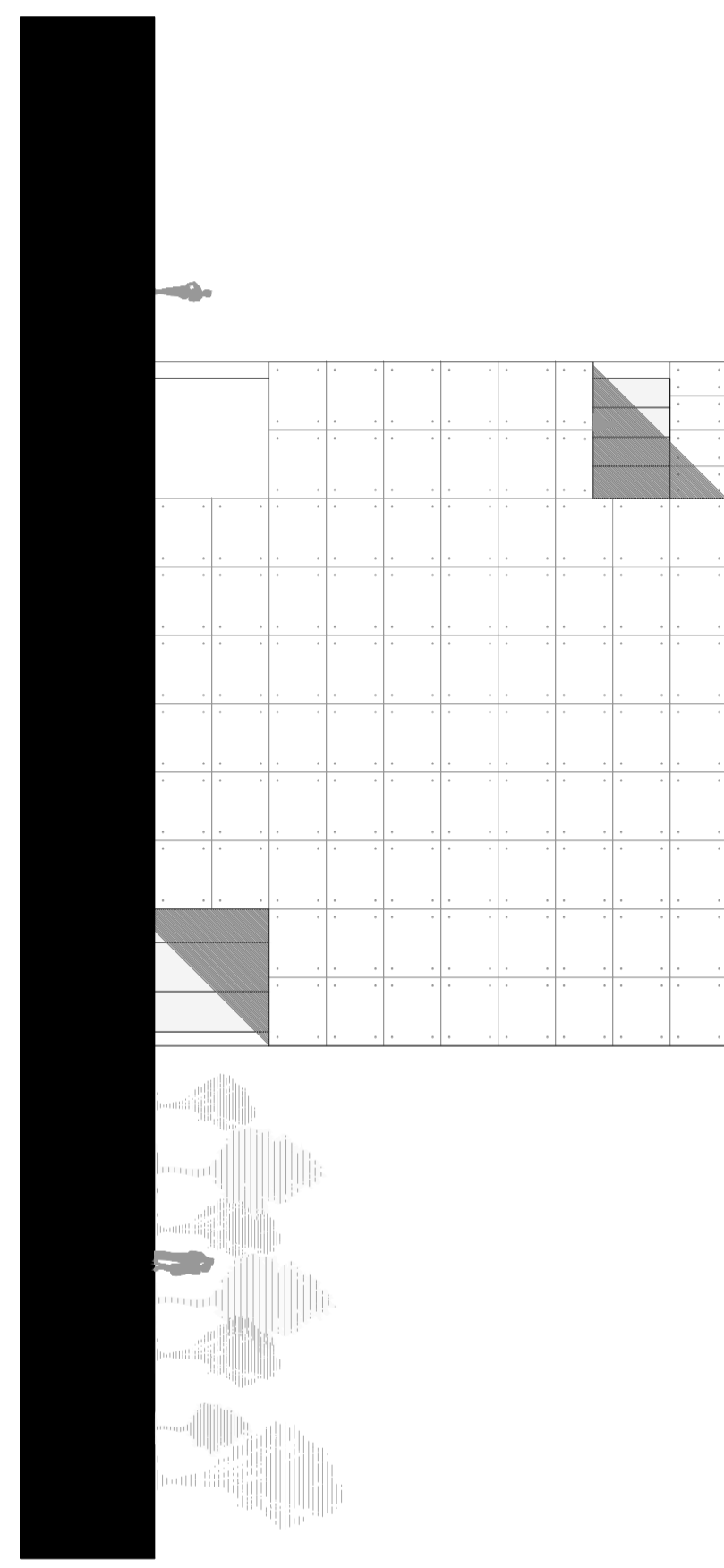
Sezione B-B



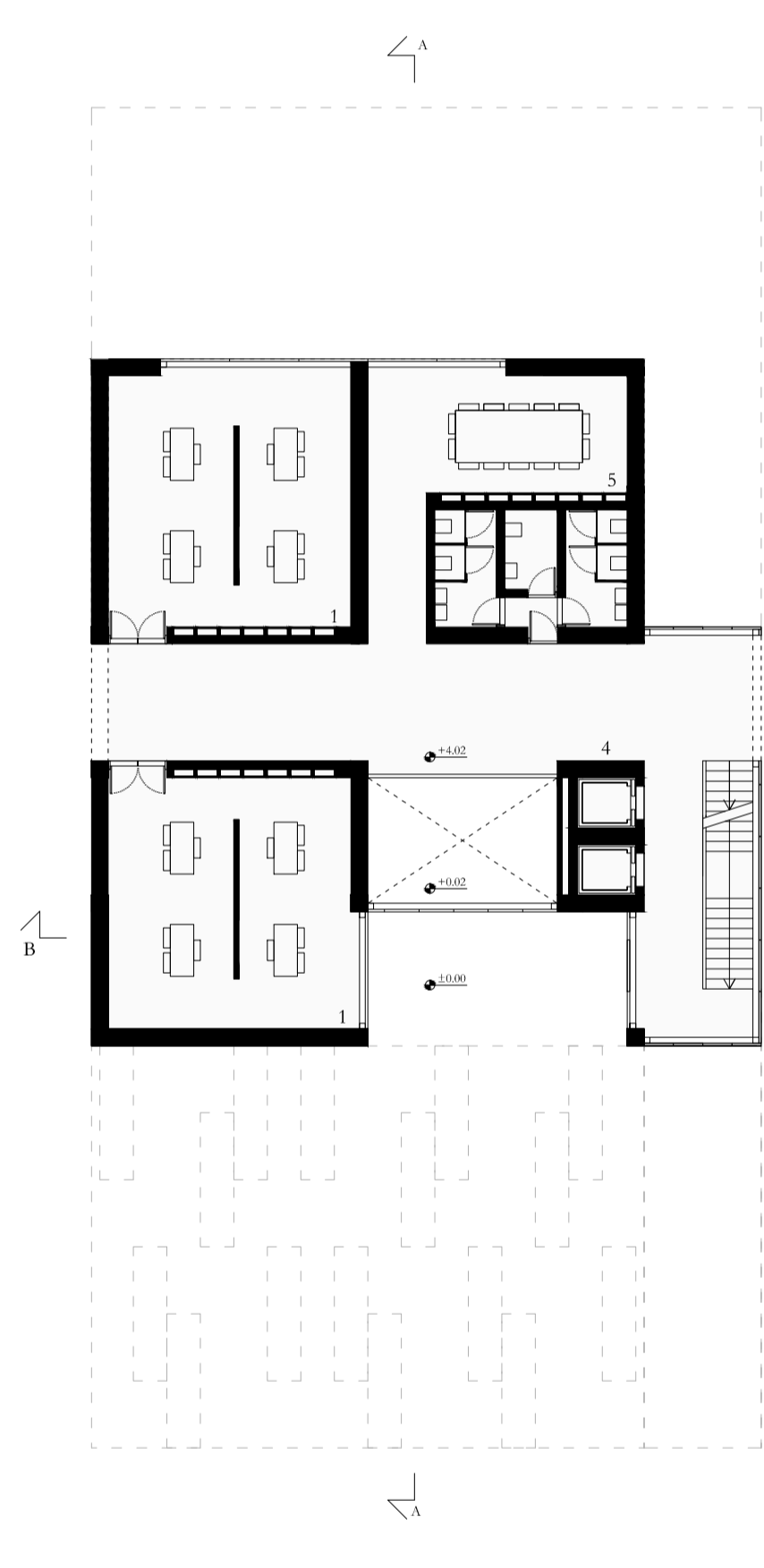
Prospetto Est



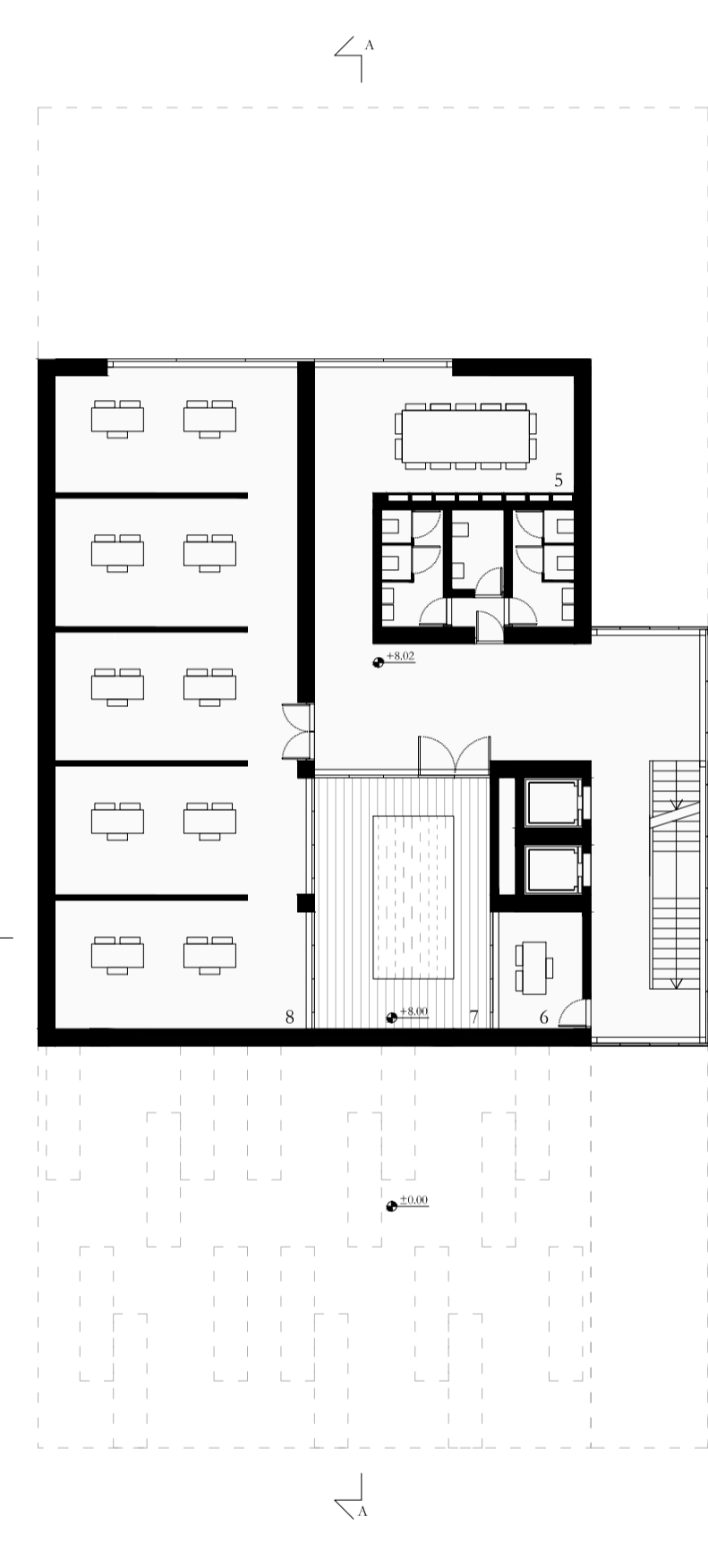
Pianta Piano Terra
 scala 1:200



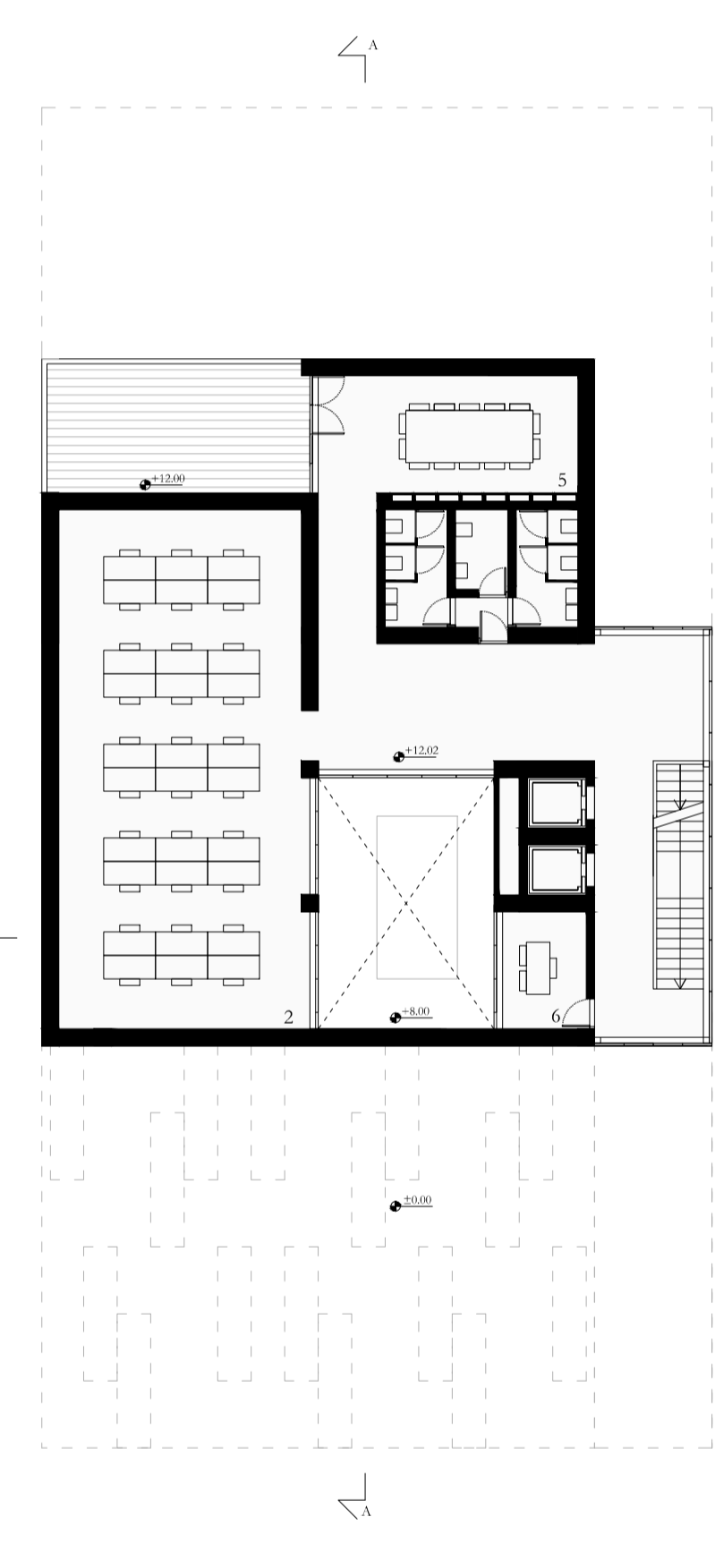
Prospetto Ovest



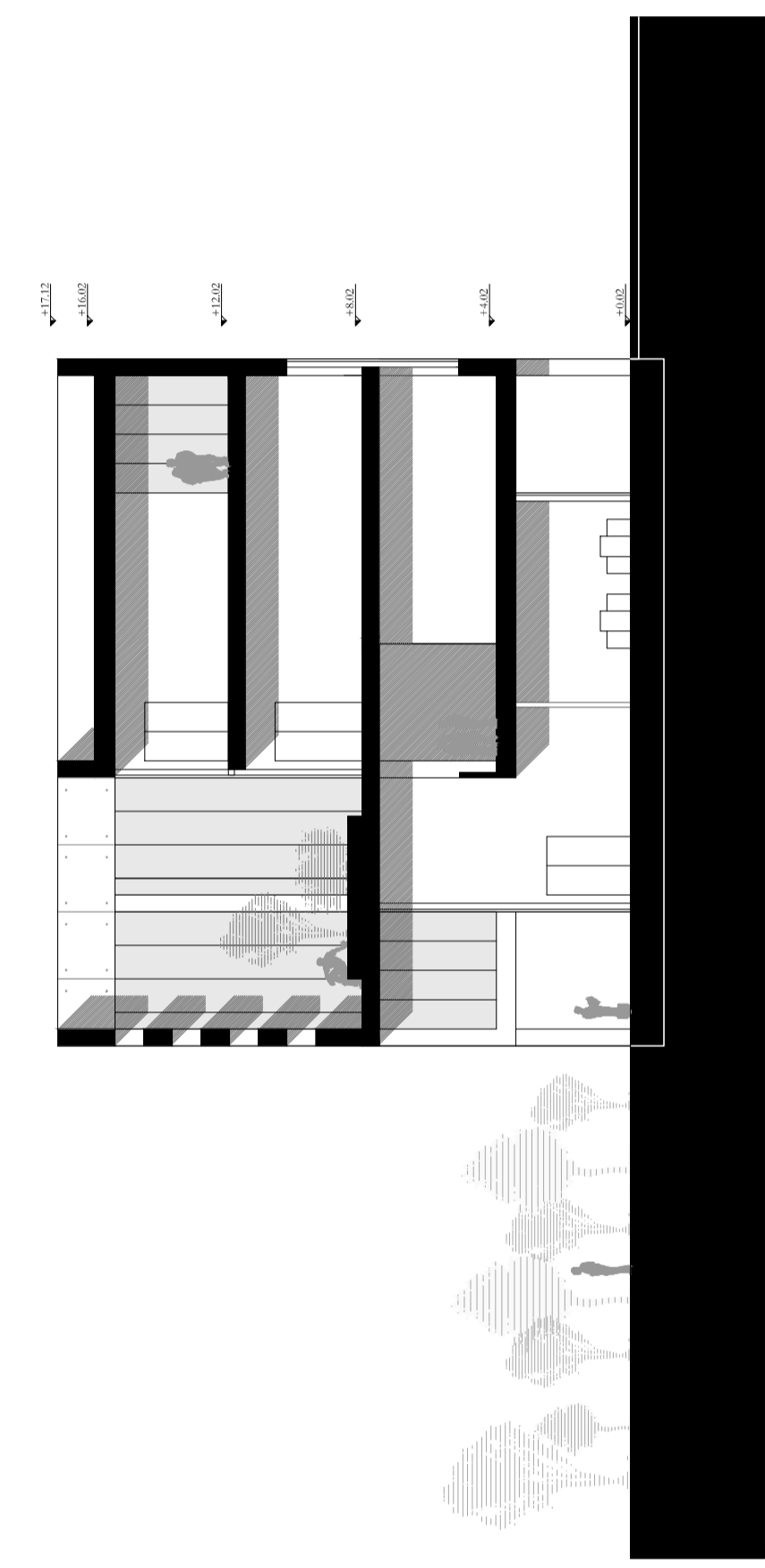
Pianta Primo Piano



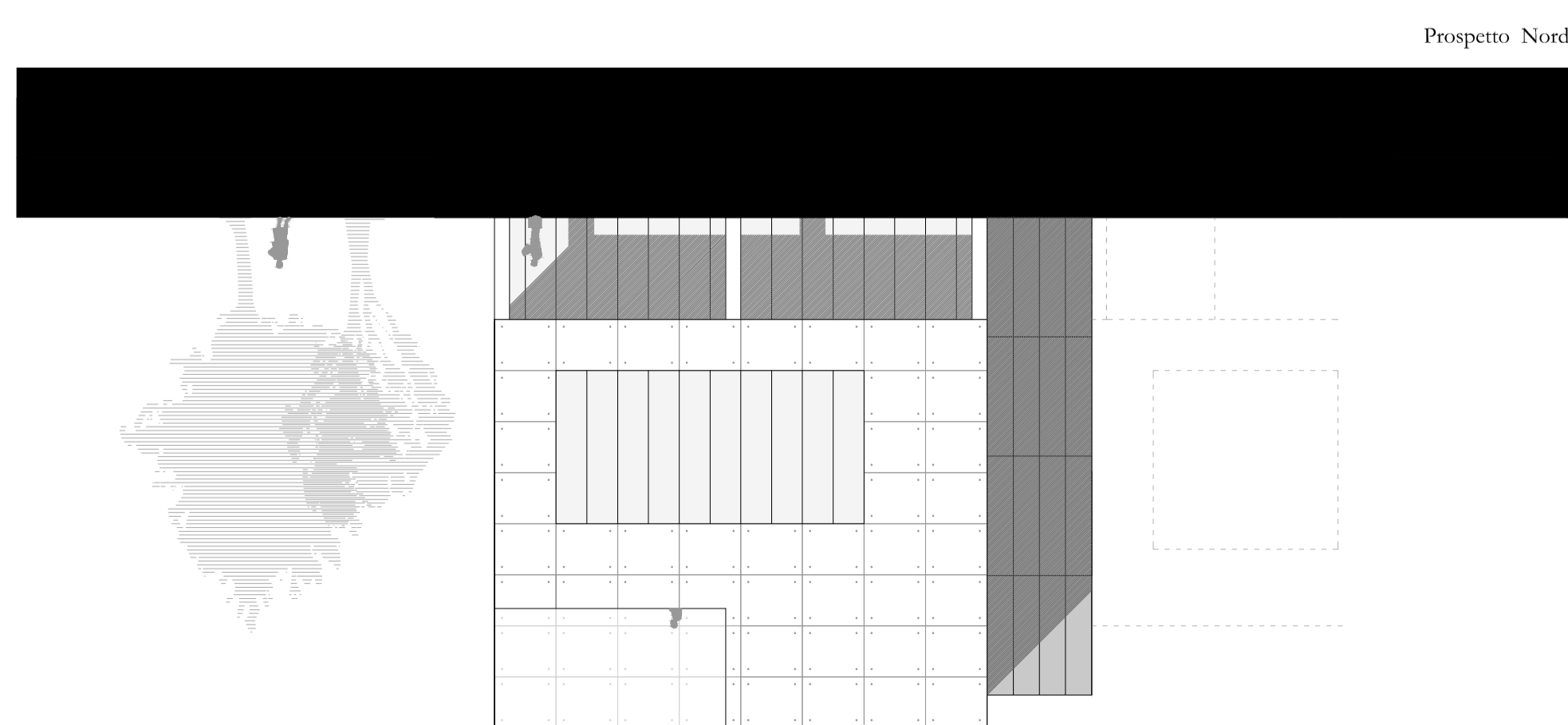
Pianta Secondo Piano



Pianta Terzo Piano



Sezione A-A



Prospetto Nord

