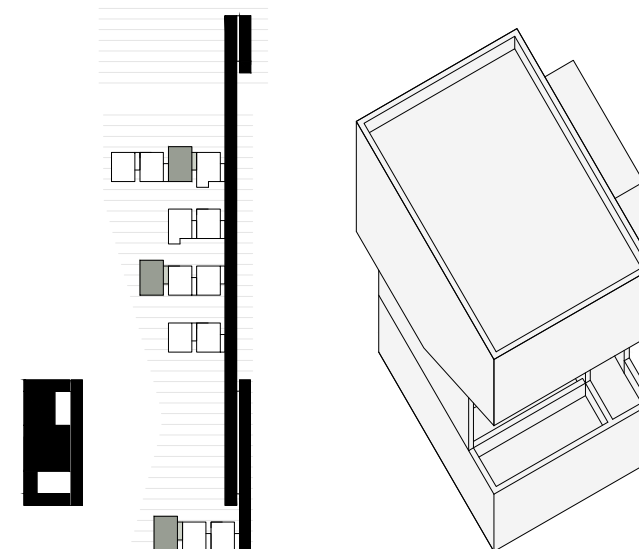
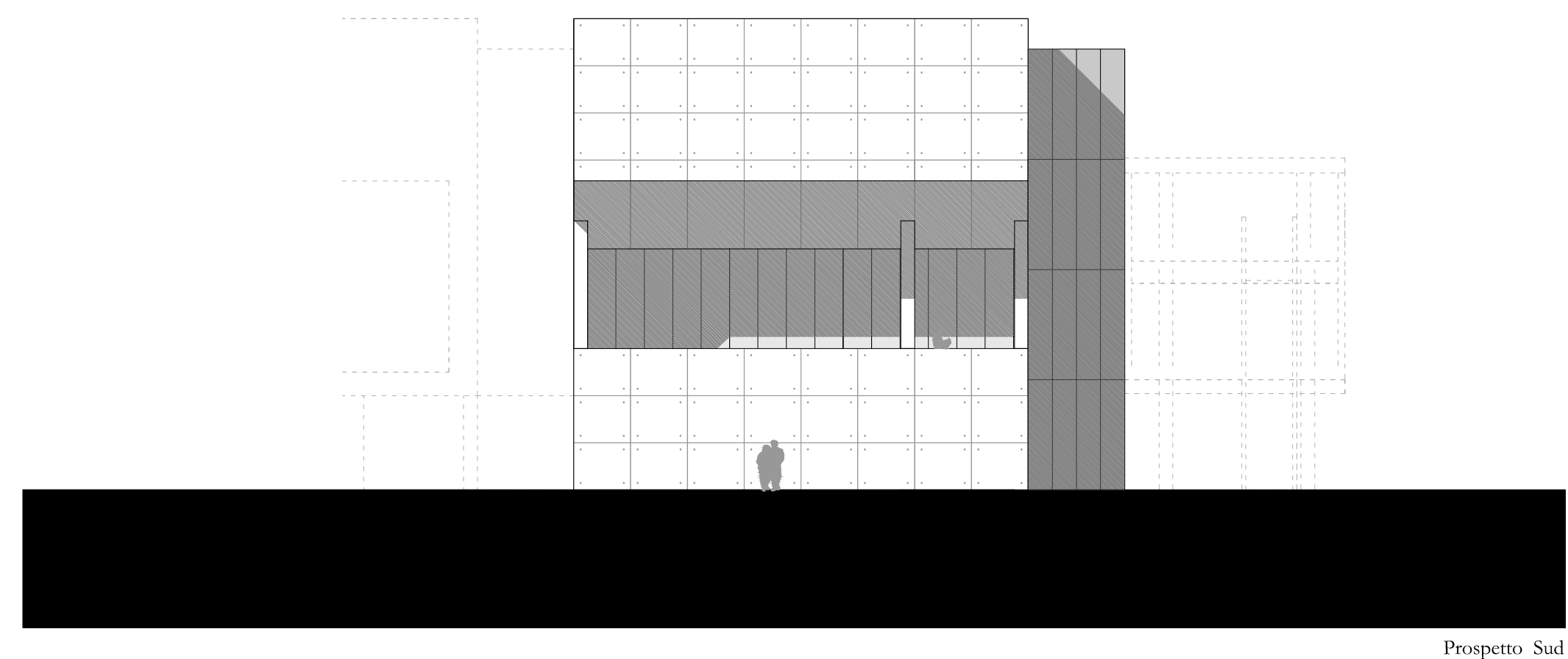


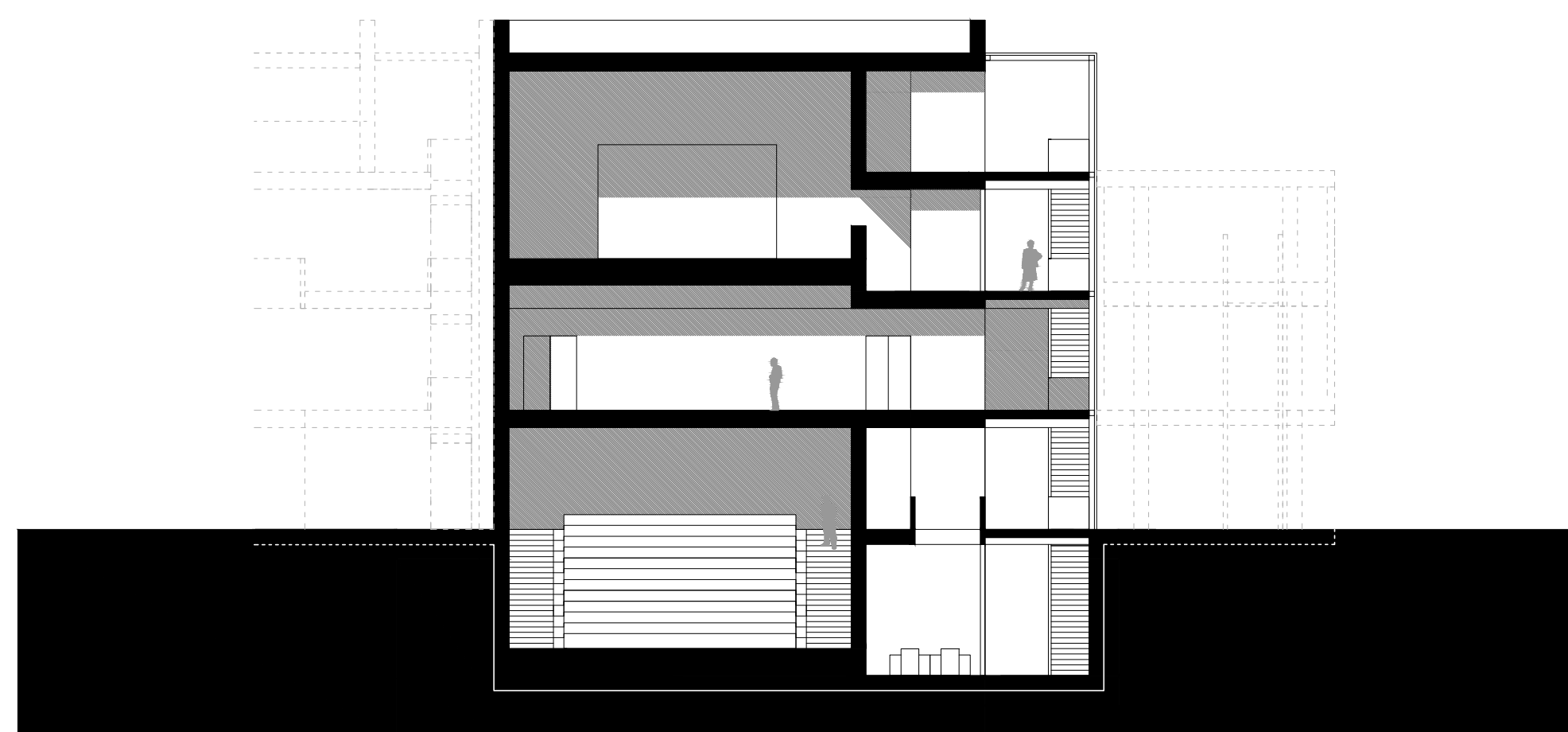
CELLULA [C] AULE INCLINATE



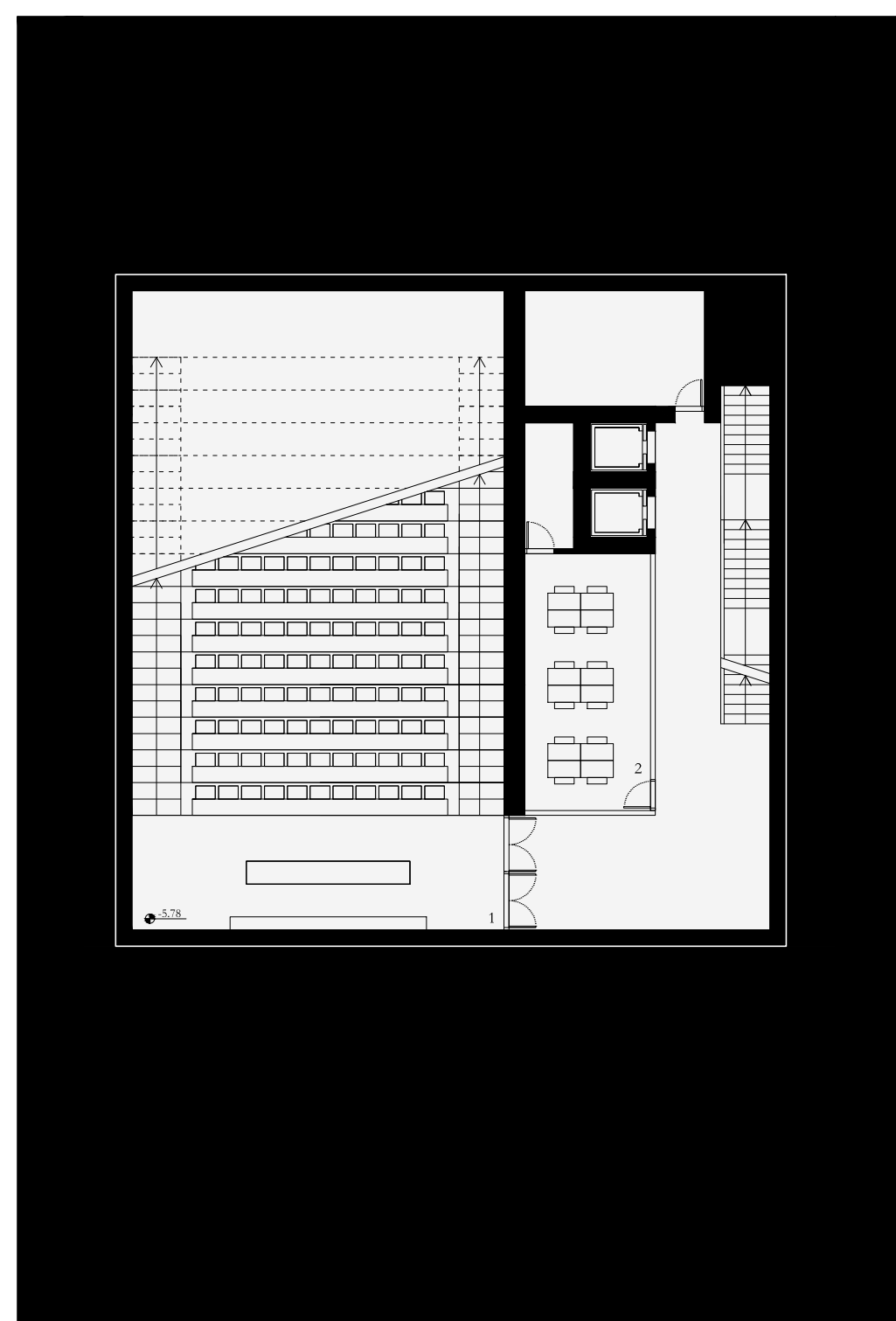
1. Aula inclinata da 154 posti.
2. Ufficio.
3. Sala Ricercatori.
4. Sala Riunioni.
5. Collegamento continuo tra le celle.
6. Aula inclinata da 110 posti.
7. Sala Dottorandi.



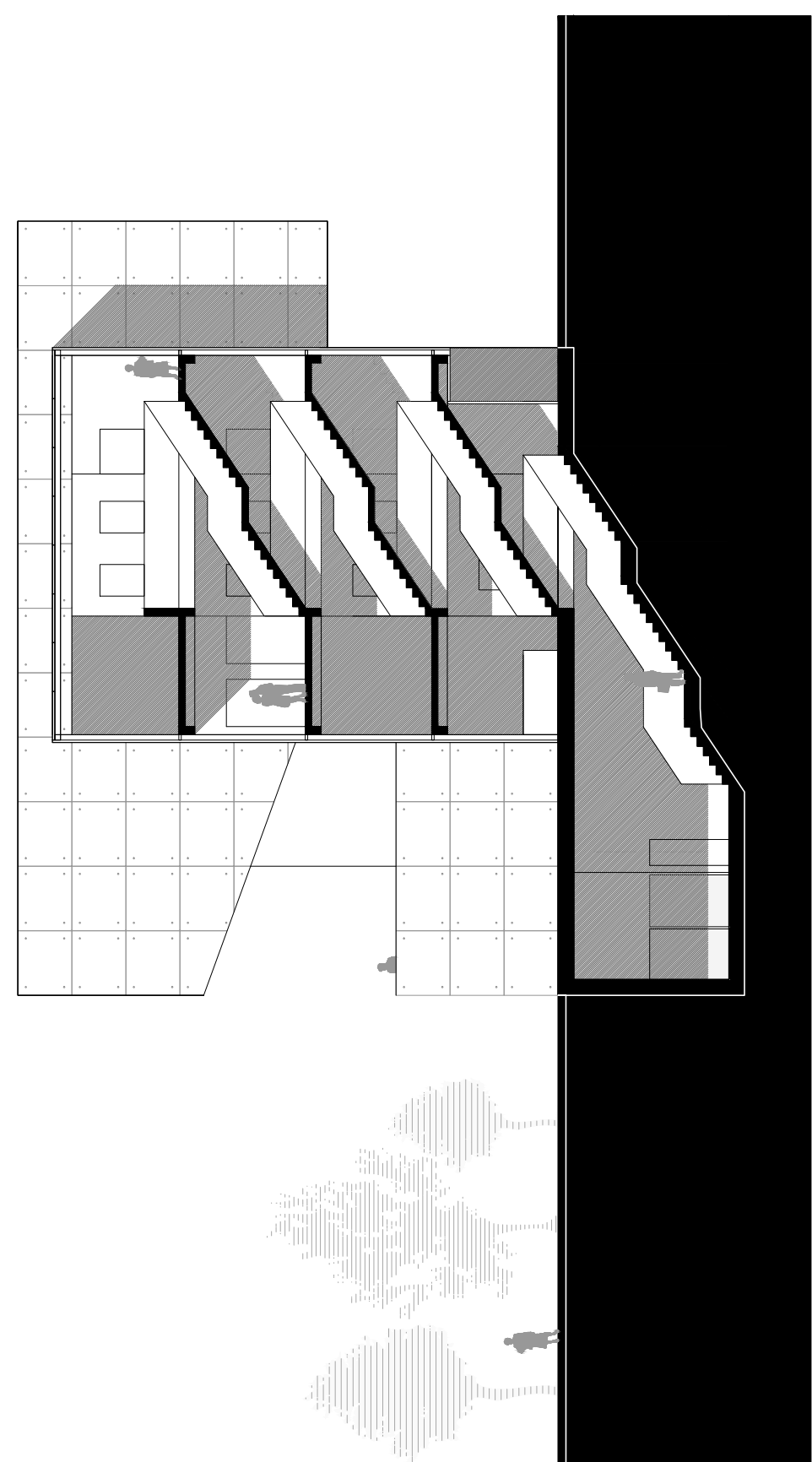
Prospetto Sud



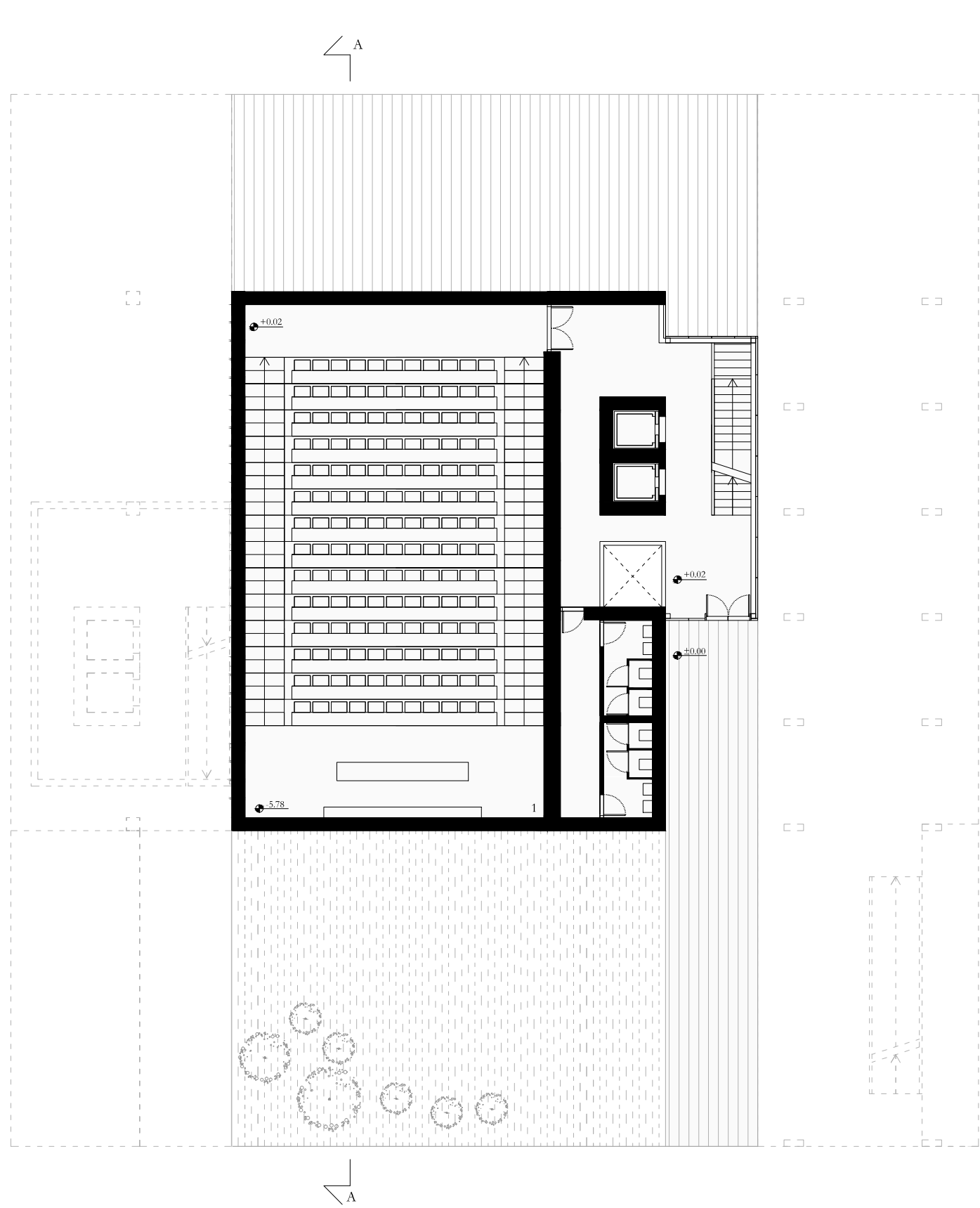
Sezione B-B



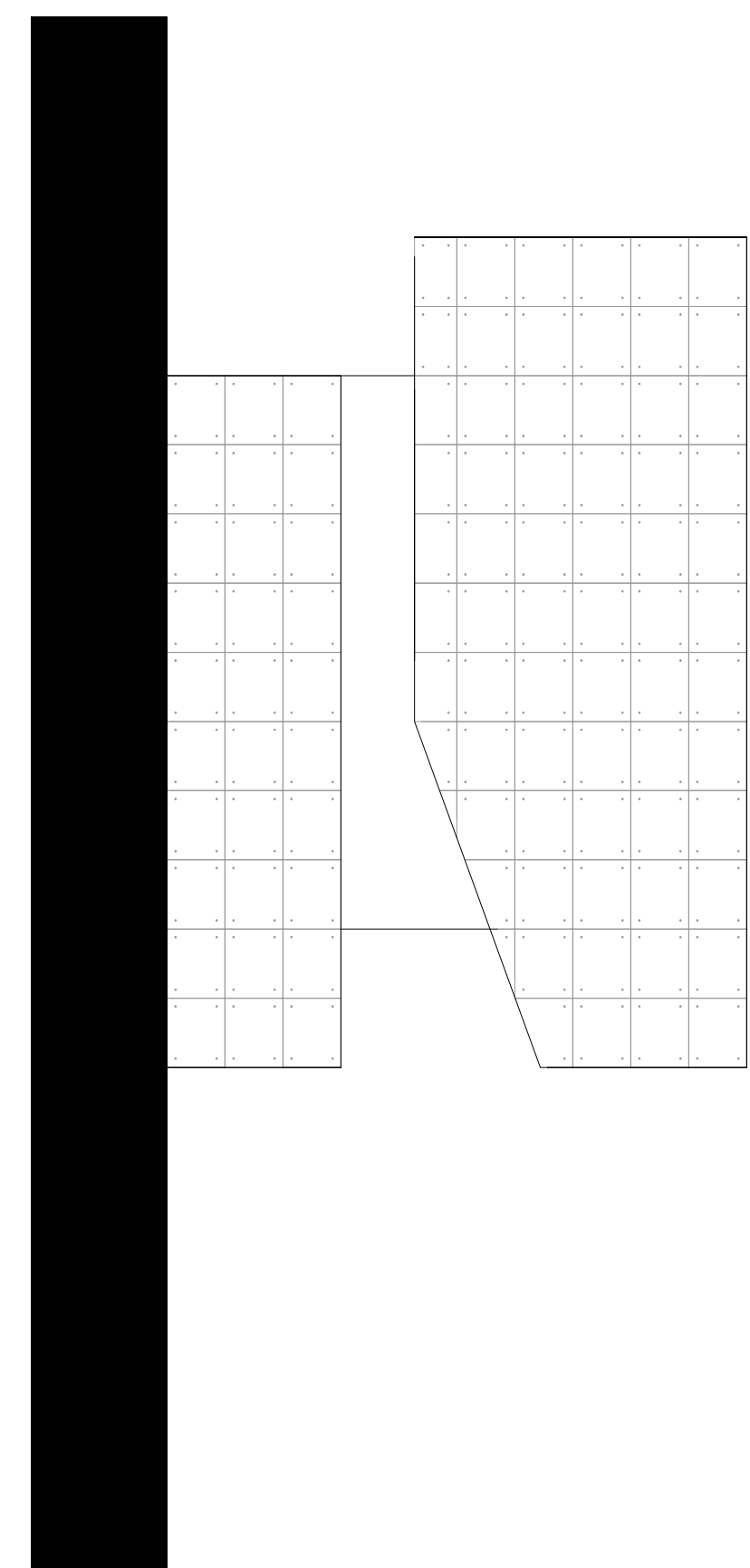
Pianta Piano Interrato



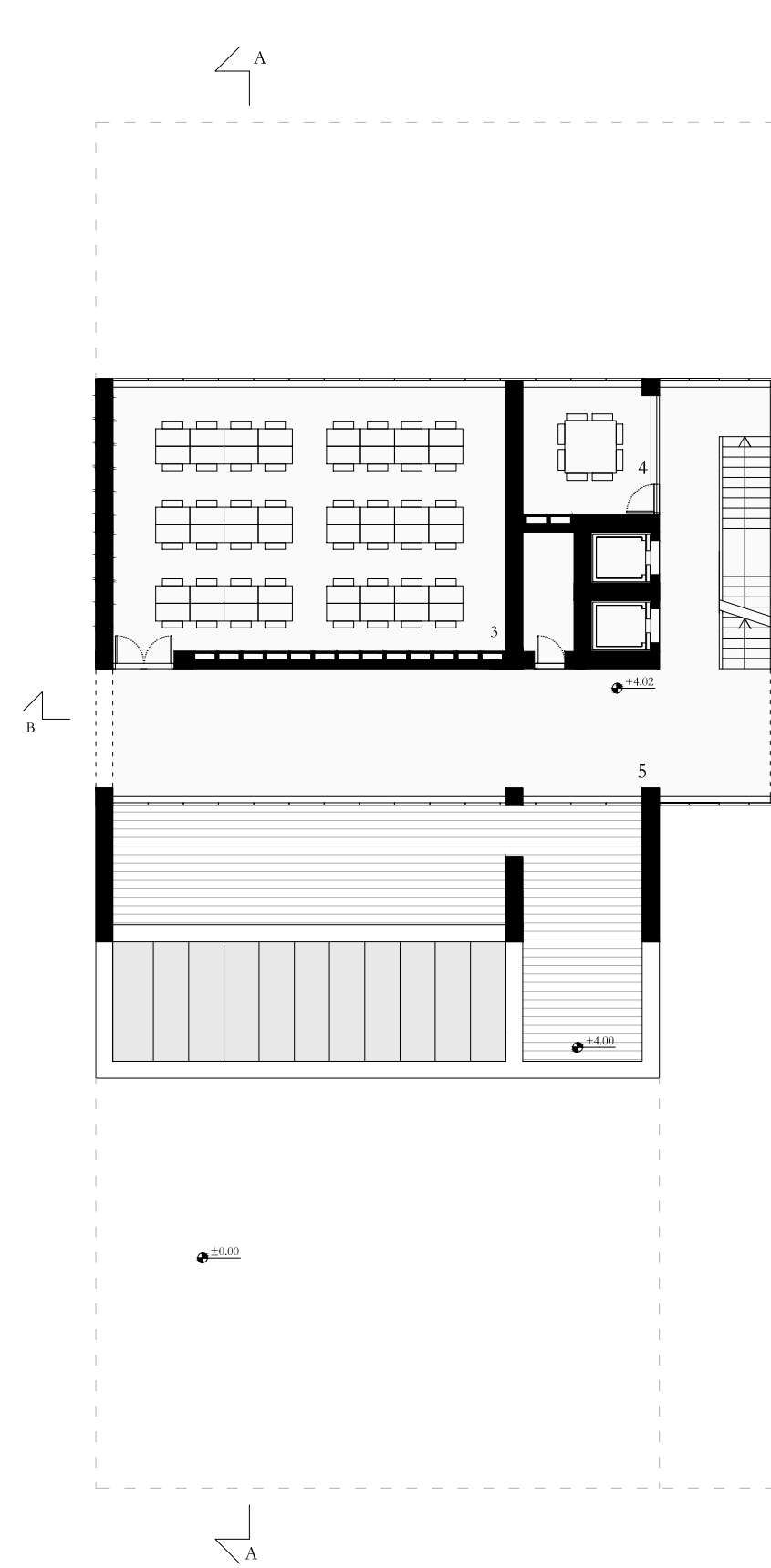
Prospetto Est



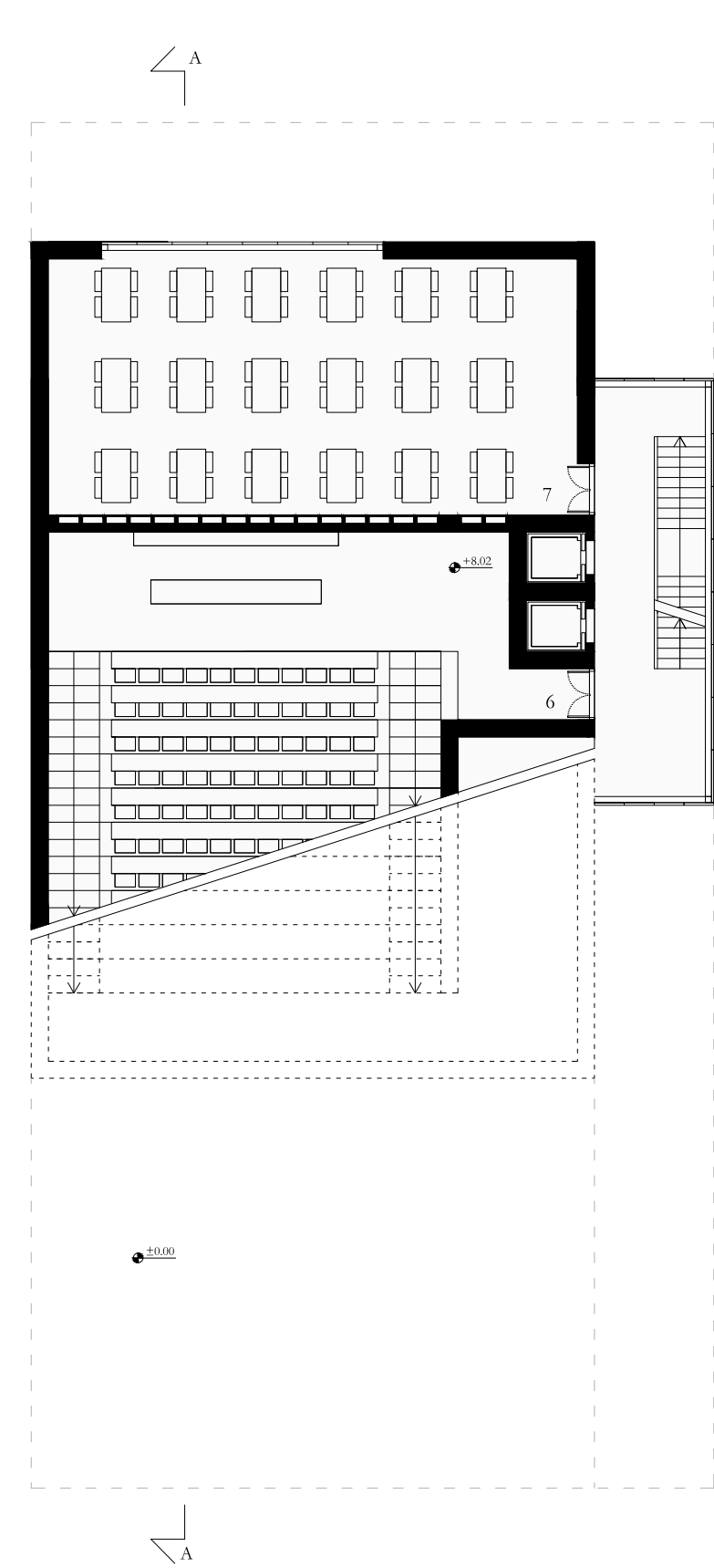
Pianta Piano Terra  
 scala 1:200



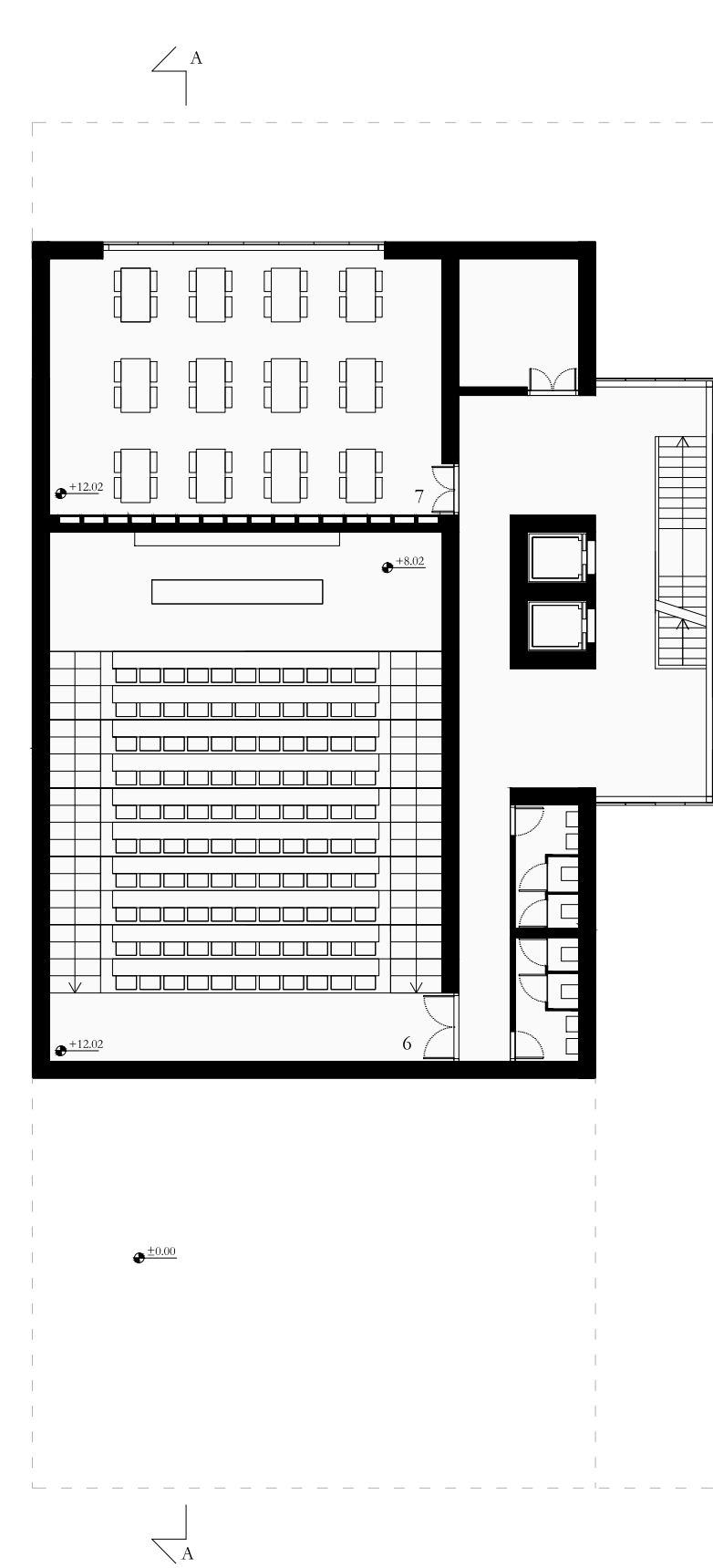
Prospetto Ovest



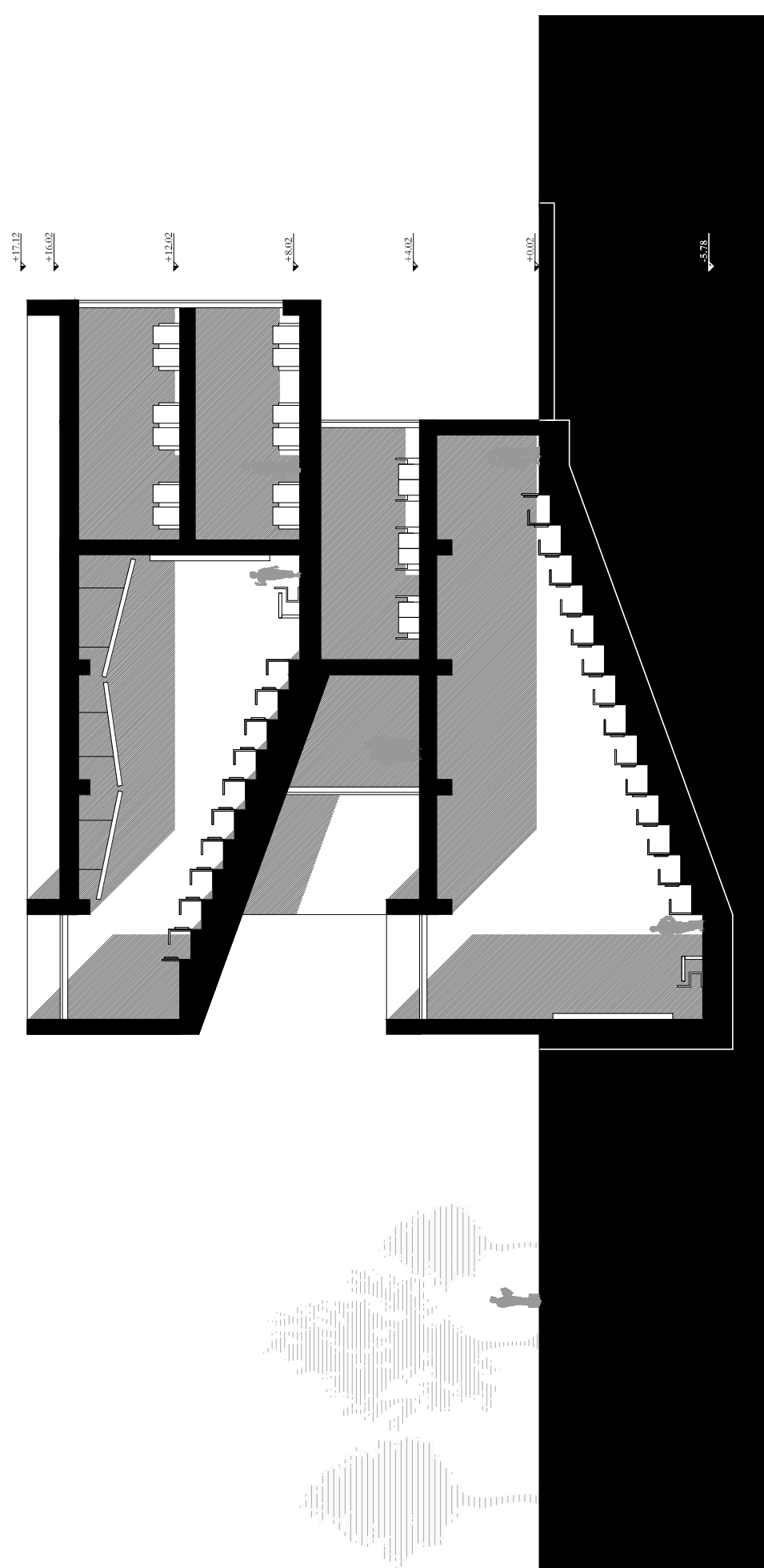
Pianta Primo Piano



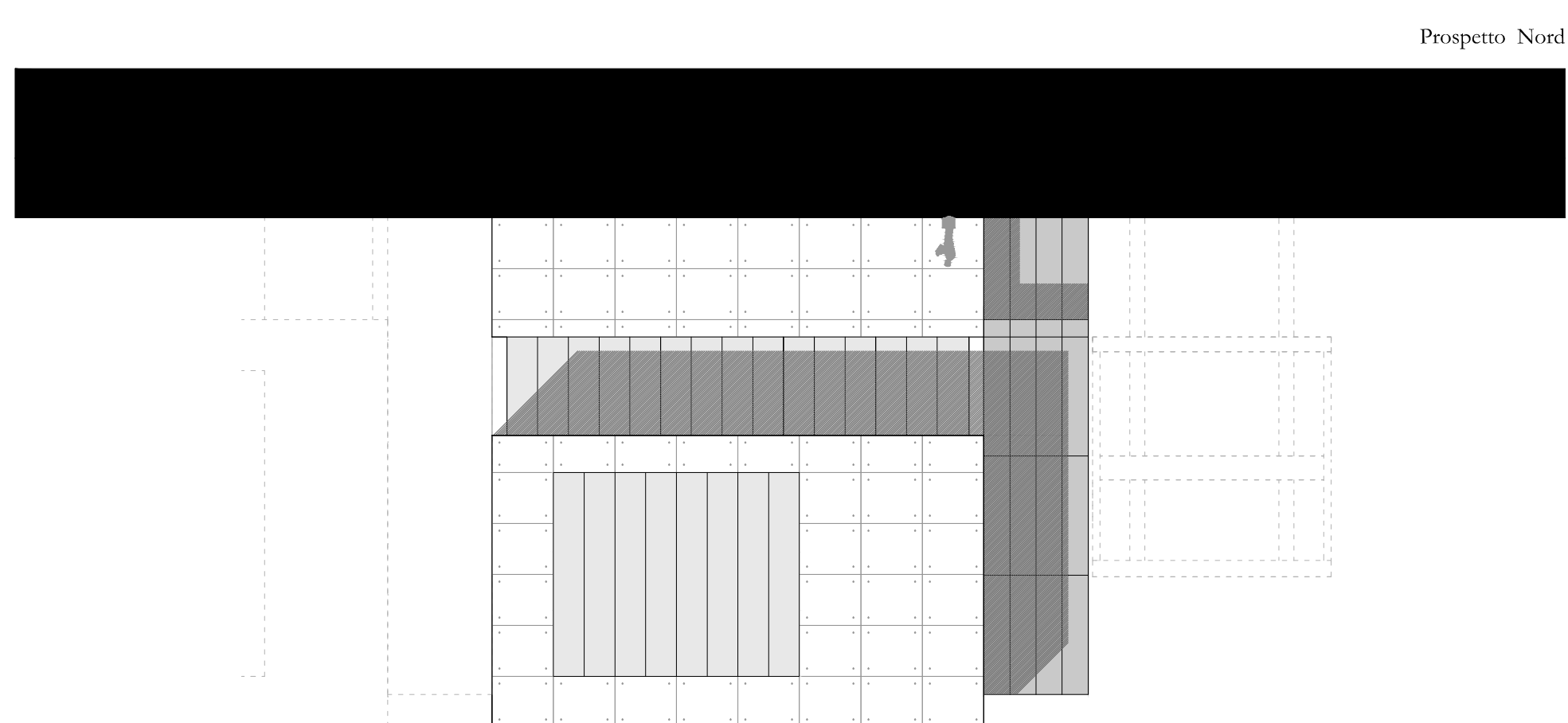
Pianta Secondo Piano



Pianta Terzo Piano



Sezione A-A



Prospetto Nord

