

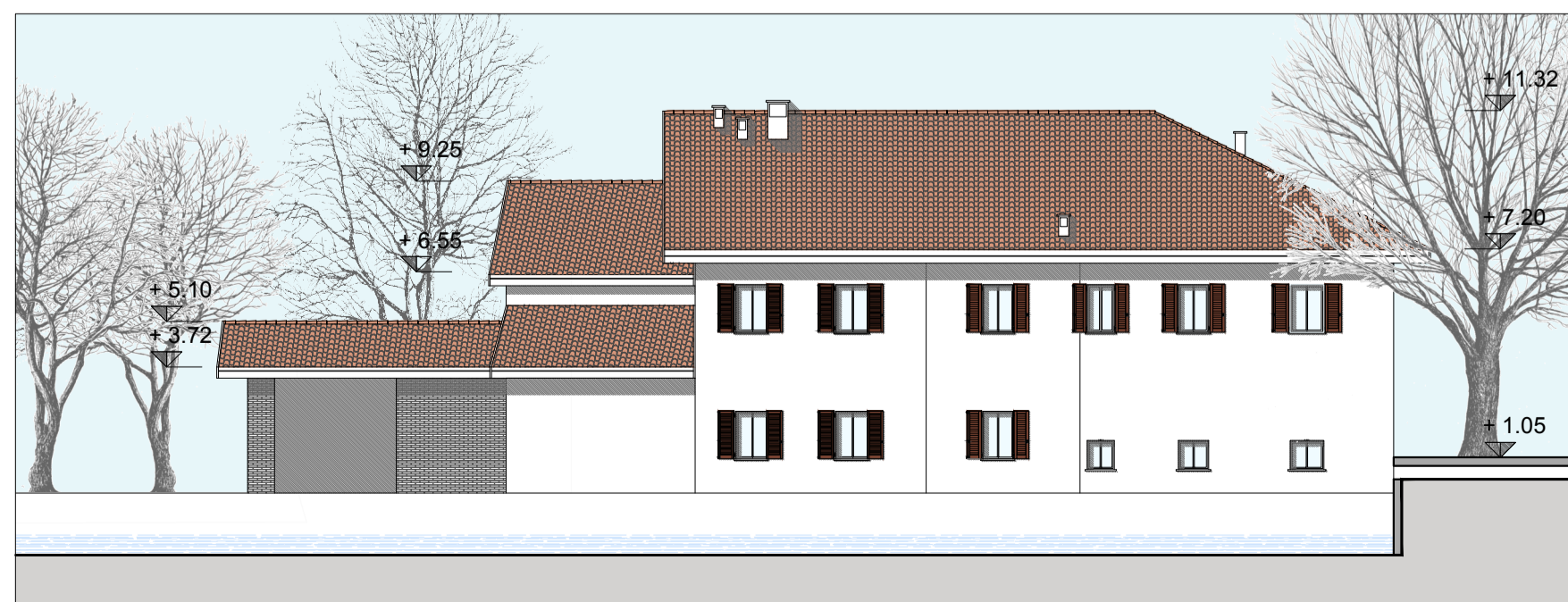


Planimetria piano terra

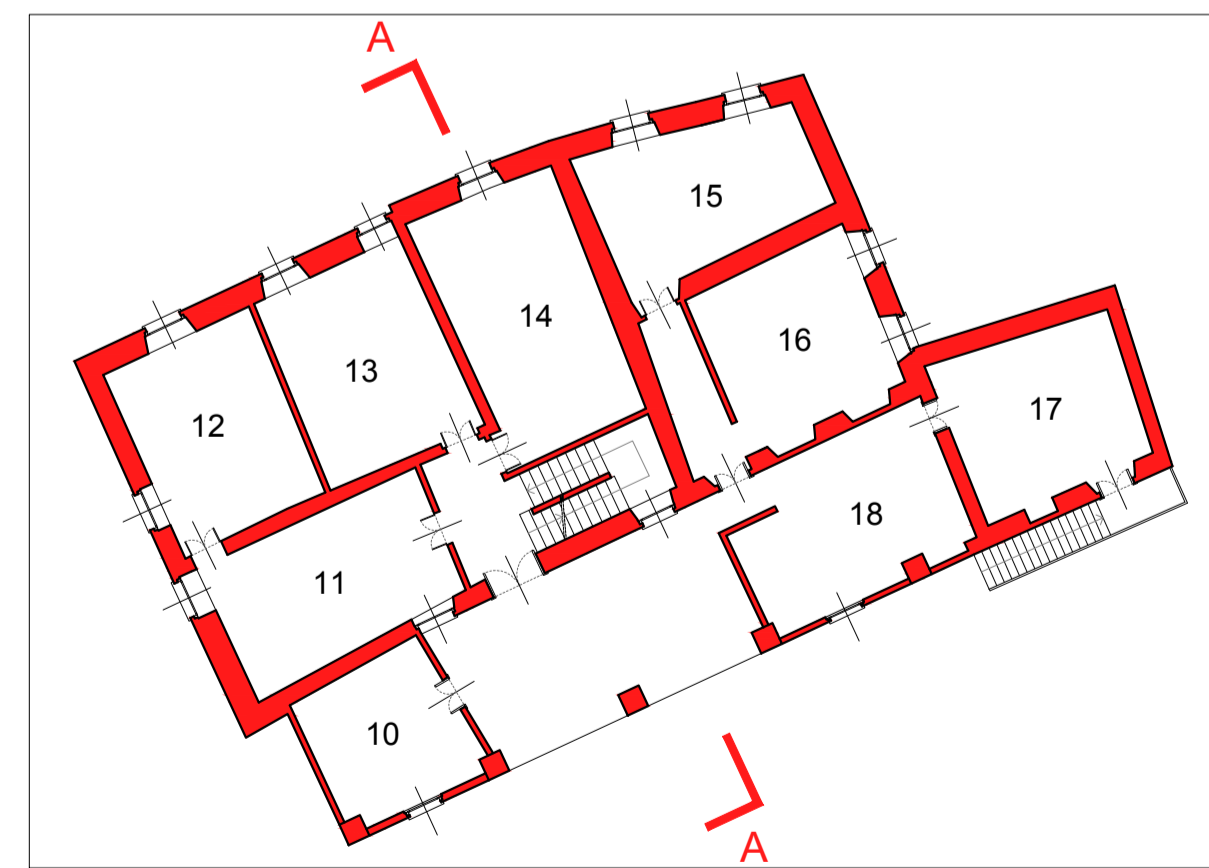
Piano Terra	
Dest. locale	Sup. netta locale
1 - Cucina	mq 22
2 - Mulino	mq 43
3 - Camera	mq 24.9
4 - Camera	mq 19.2
5 - Cucina	mq 18.5
6 - Deposito	mq 22.9
7 - Deposito	mq 21.05
8 - Deposito	mq 17.6
9 - Deposito	mq 5.05



Prospecto SUD

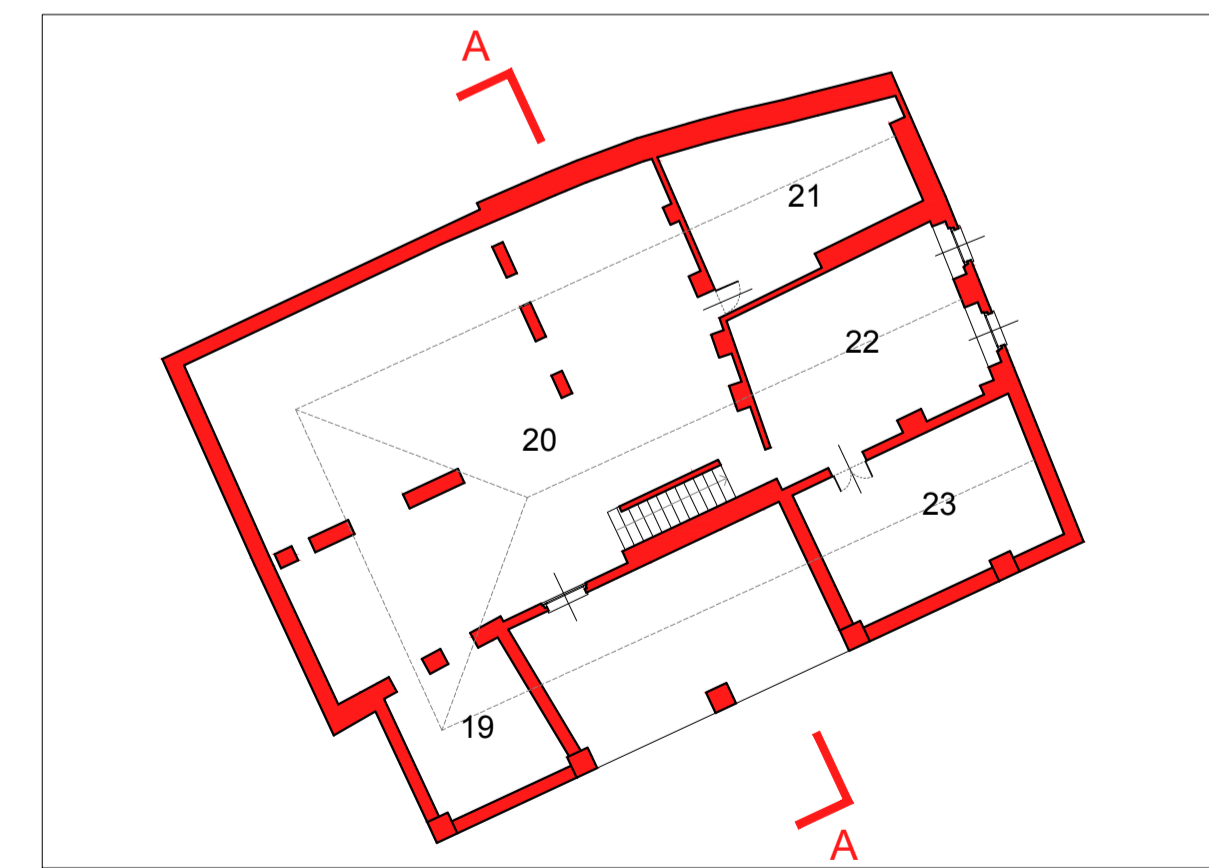


Prospecto NORD



Pianta piano Primo

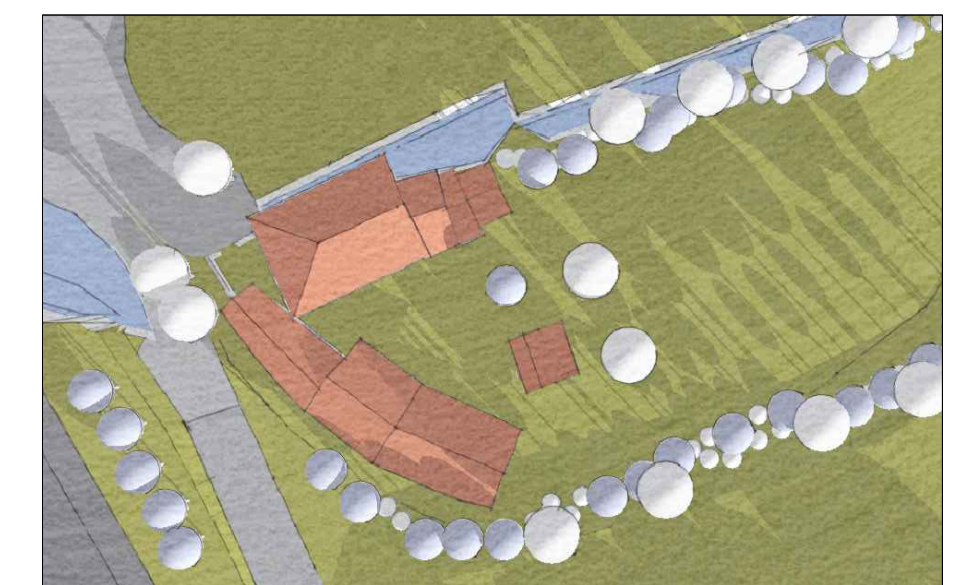
Dest. locale	Sup. netta locale
10 - Deposito	mq 15.7
11 - Camera	mq 23.4
12 - Camera	mq 22
13 - Camera	mq 23.2
14 - Camera	mq 27.3
15 - Camera	mq 21.05
16 - Camera	mq 20.6
17 - Camera	mq 20.9
18 - Camera	mq 22.7



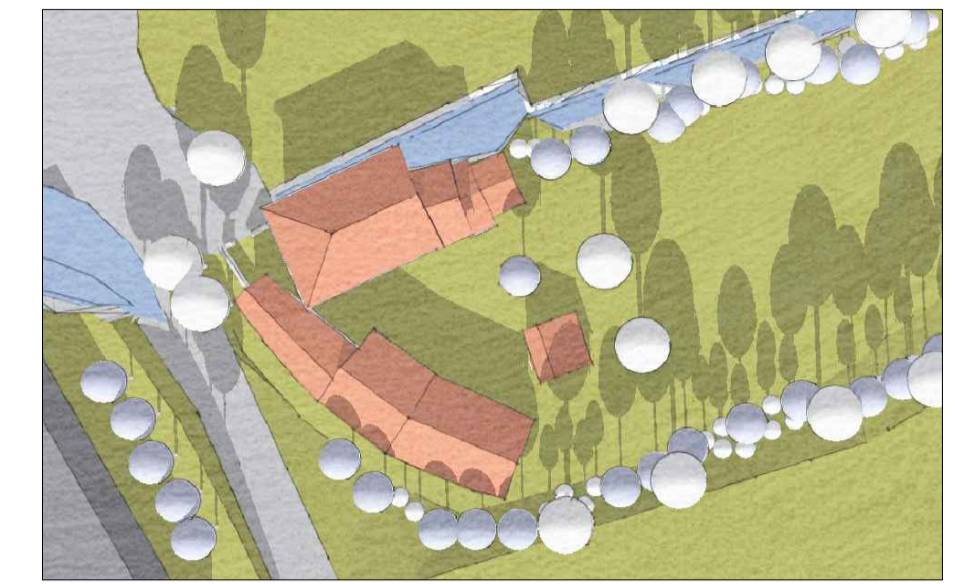
Pianta piano Sottotetto

Dest. locale	Sup. netta locale
19 - Camera	mq 13.6
20 - Sgombero	mq 120.7
21 - Camera	mq 21.6
22 - Camera	mq 28.2
23 - Camera	mq 24.6

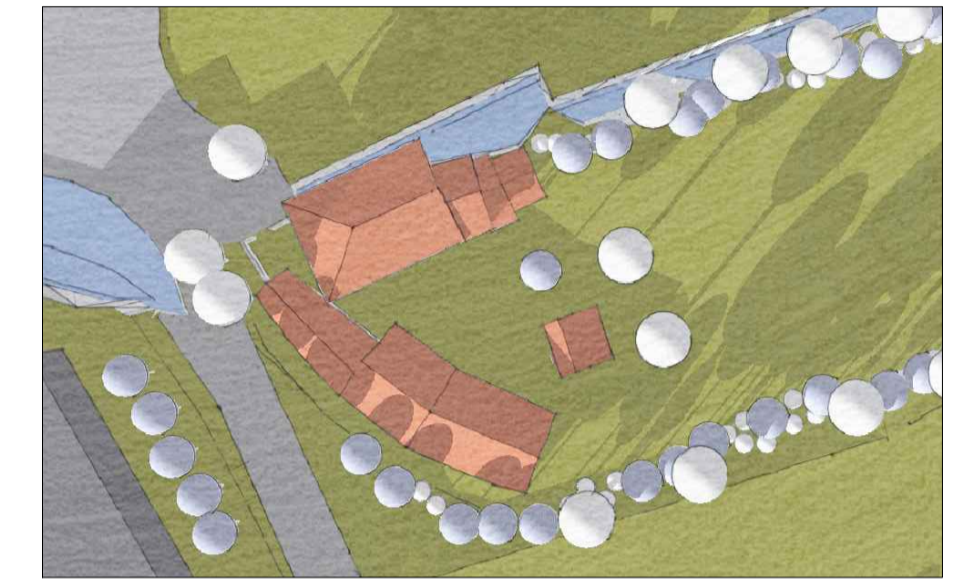
Superficie LORDA totale (Terra, Primo e Sottotetto) : **842.6 mq**
 Superficie NETTA totale (Terra, Primo e Sottotetto) : **600 mq**
 Superficie portici (Terra, Primo e Sottotetto) : **145.2 mq**



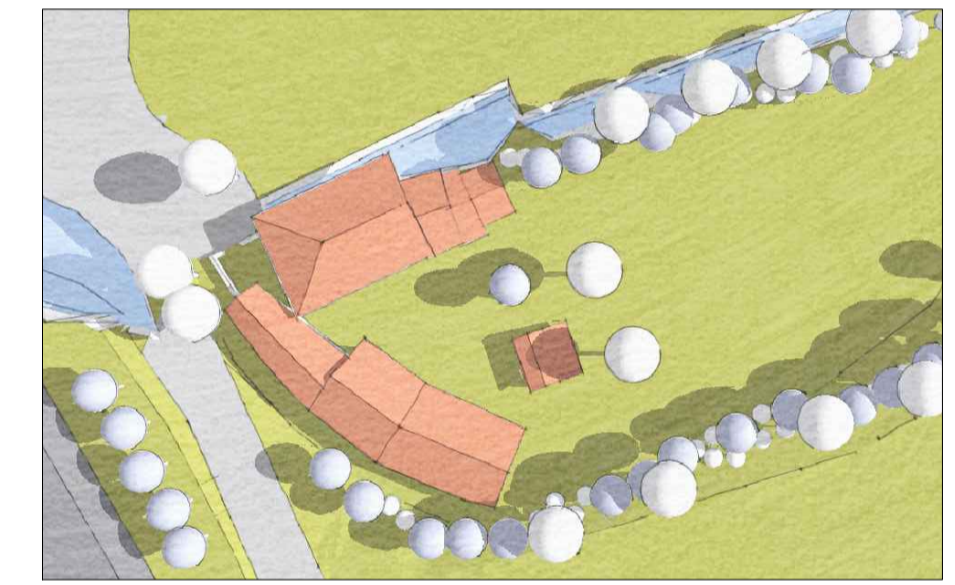
21 Dicembre Ore 9



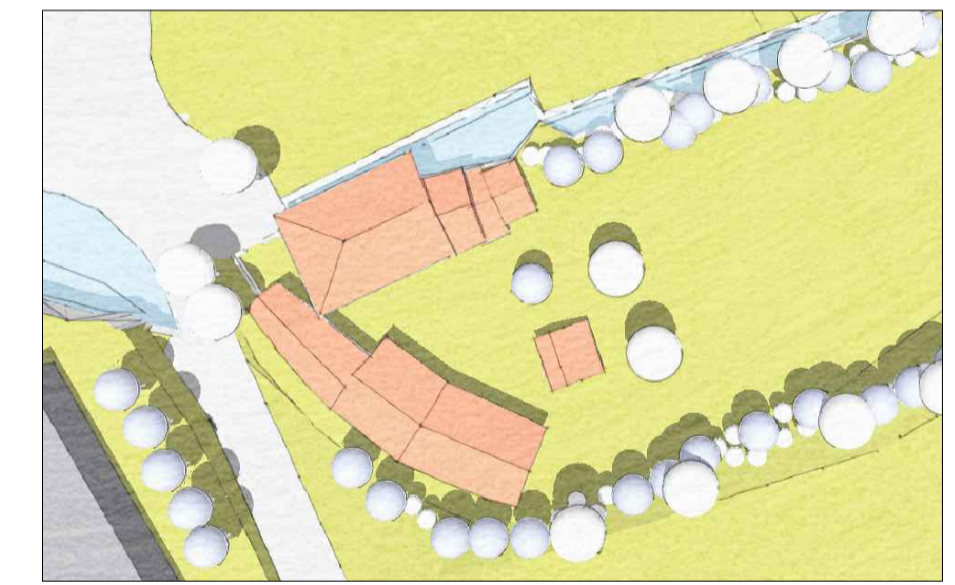
21 Dicembre Ore 12



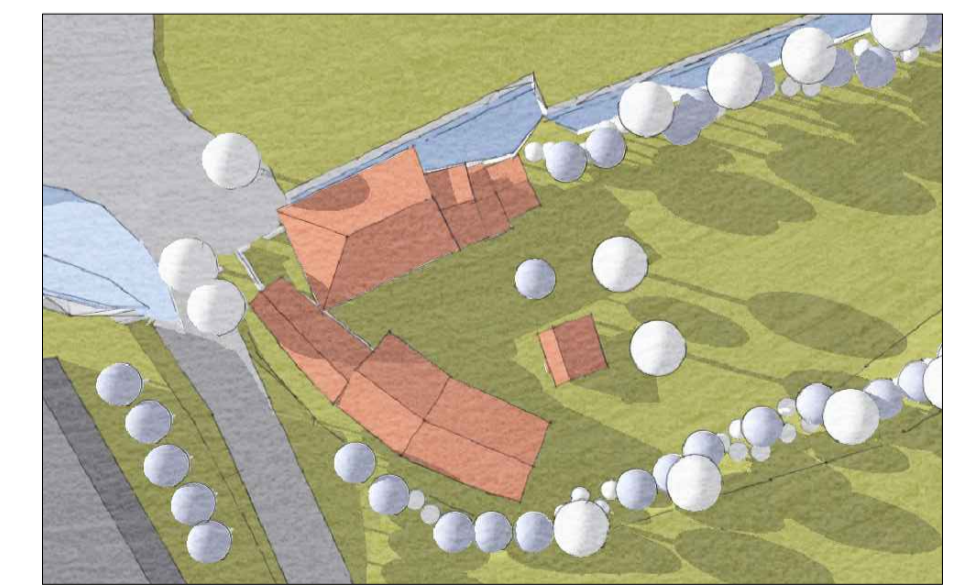
21 Dicembre Ore 15



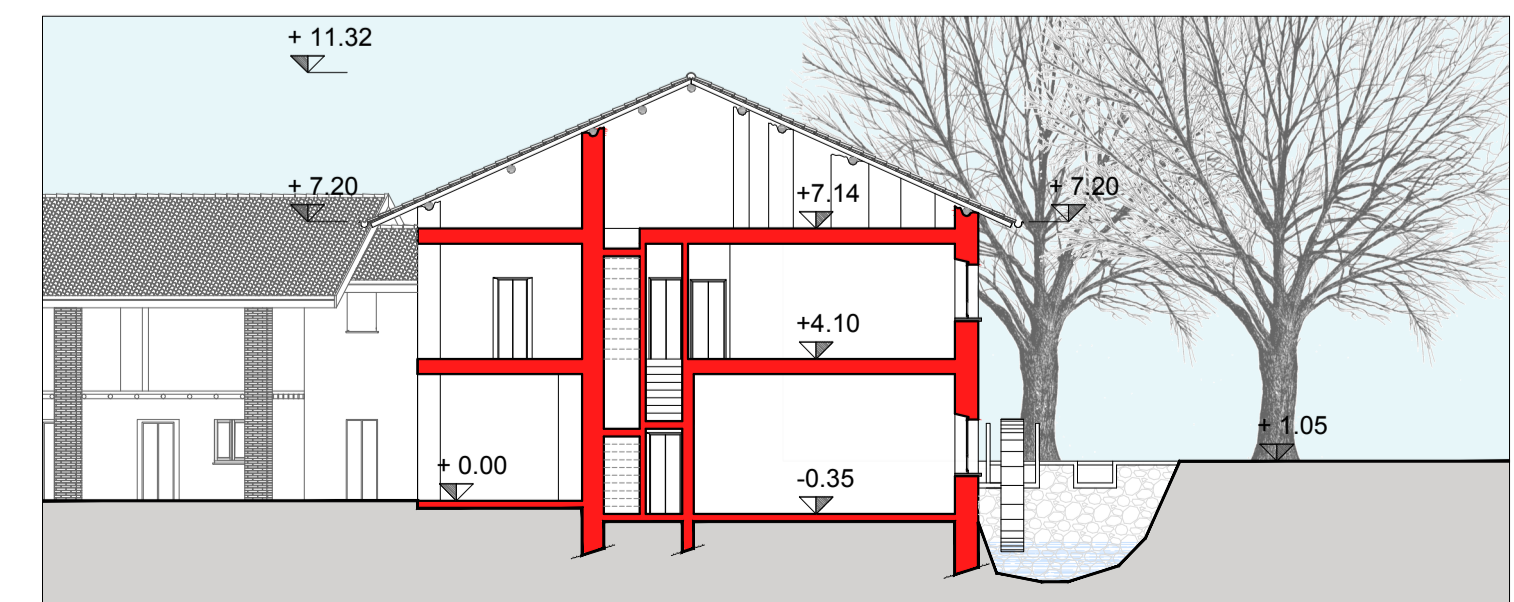
21 Giugno Ore 8



21 Giugno Ore 12



21 Giugno Ore 18



Sezione A - A