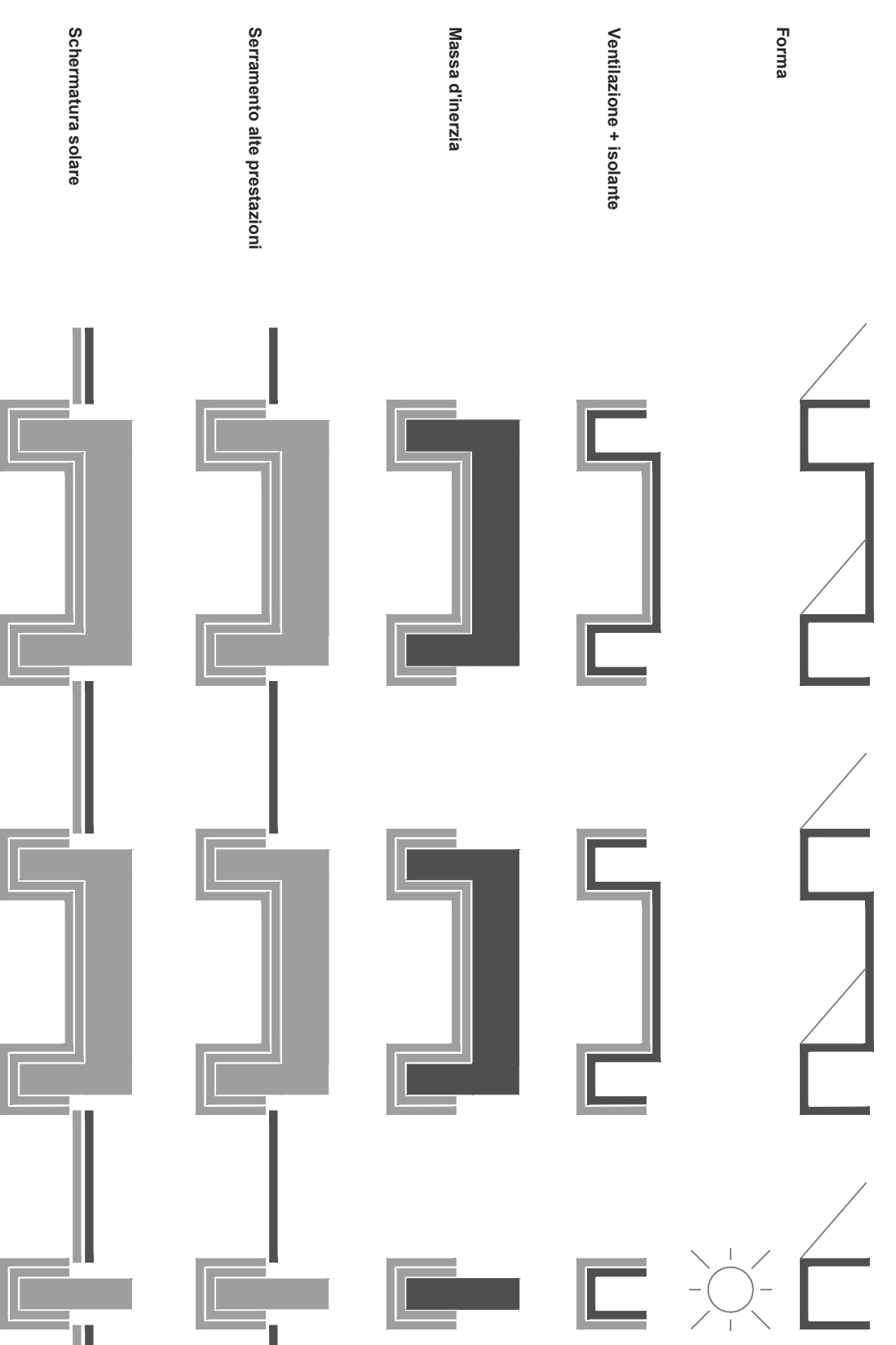
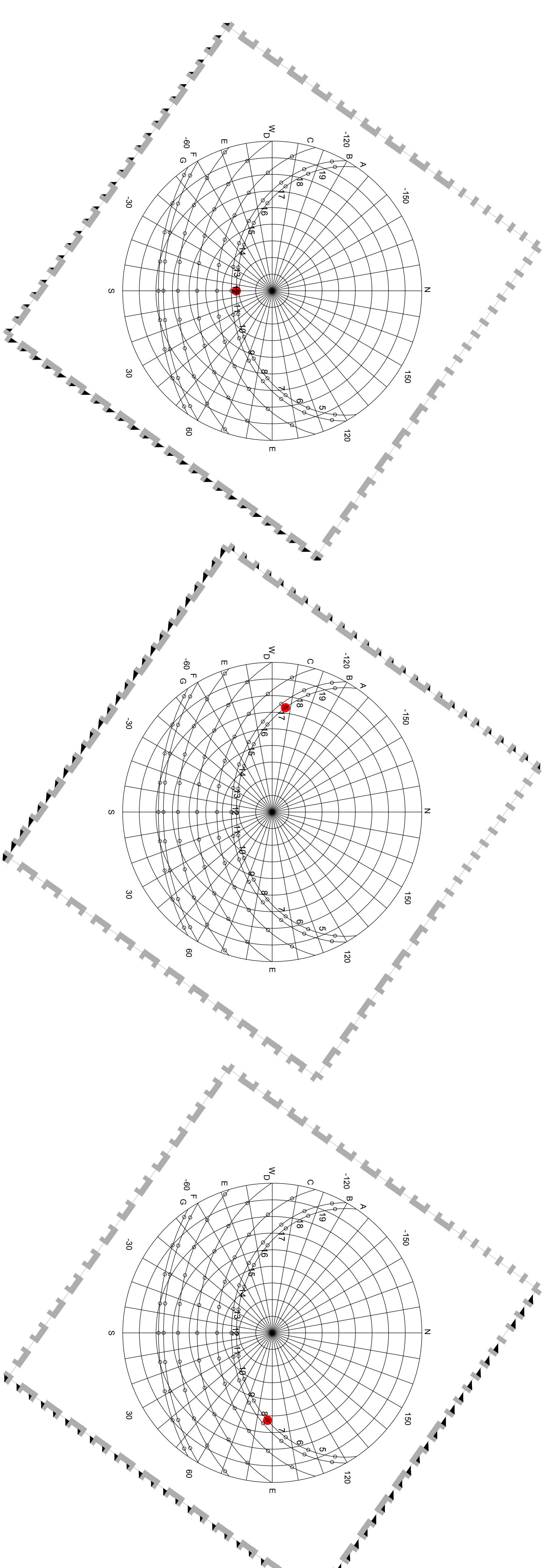
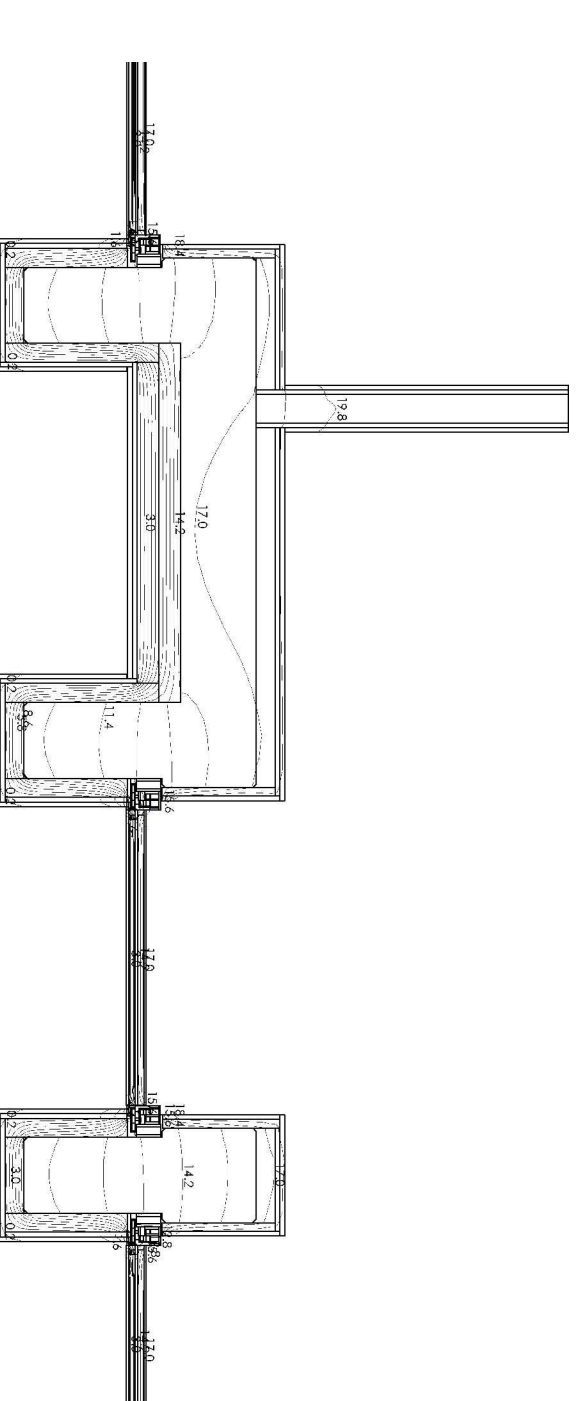
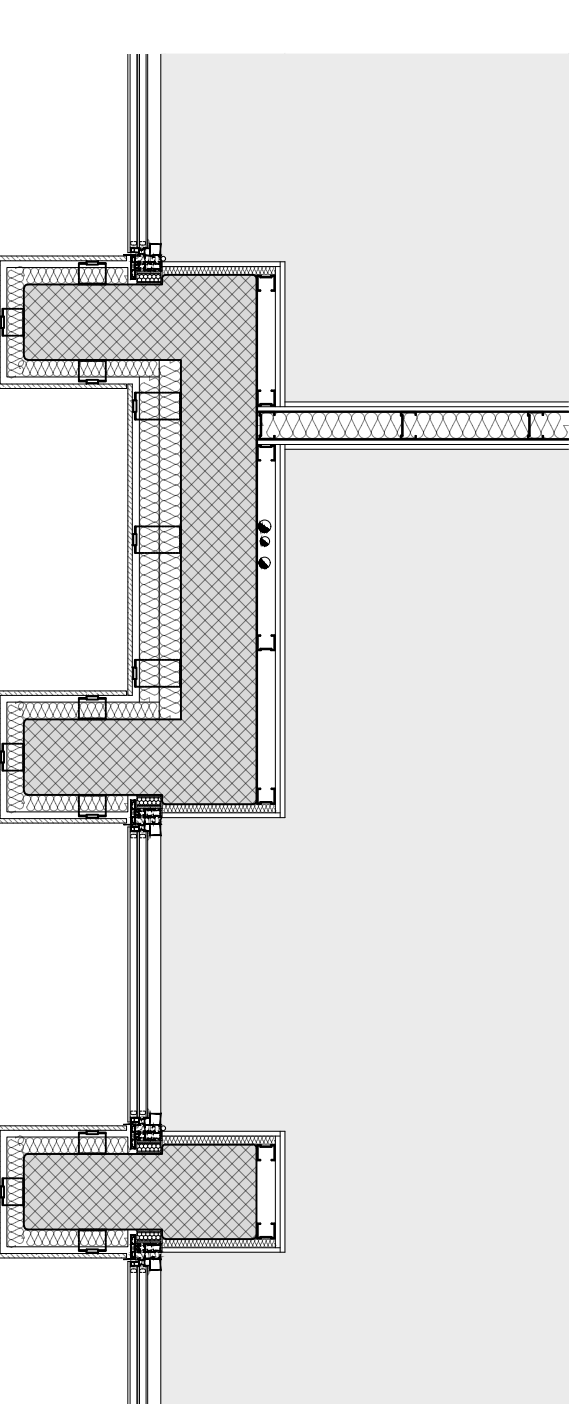
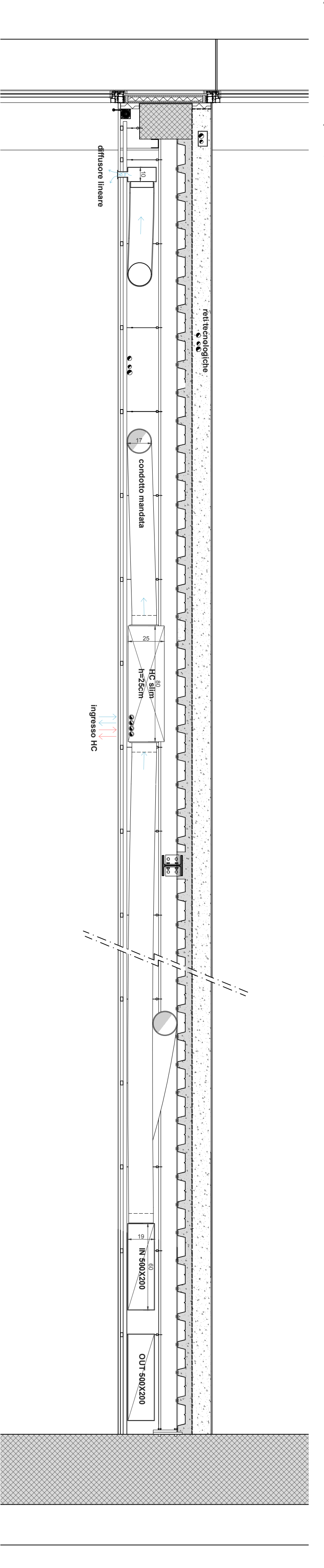
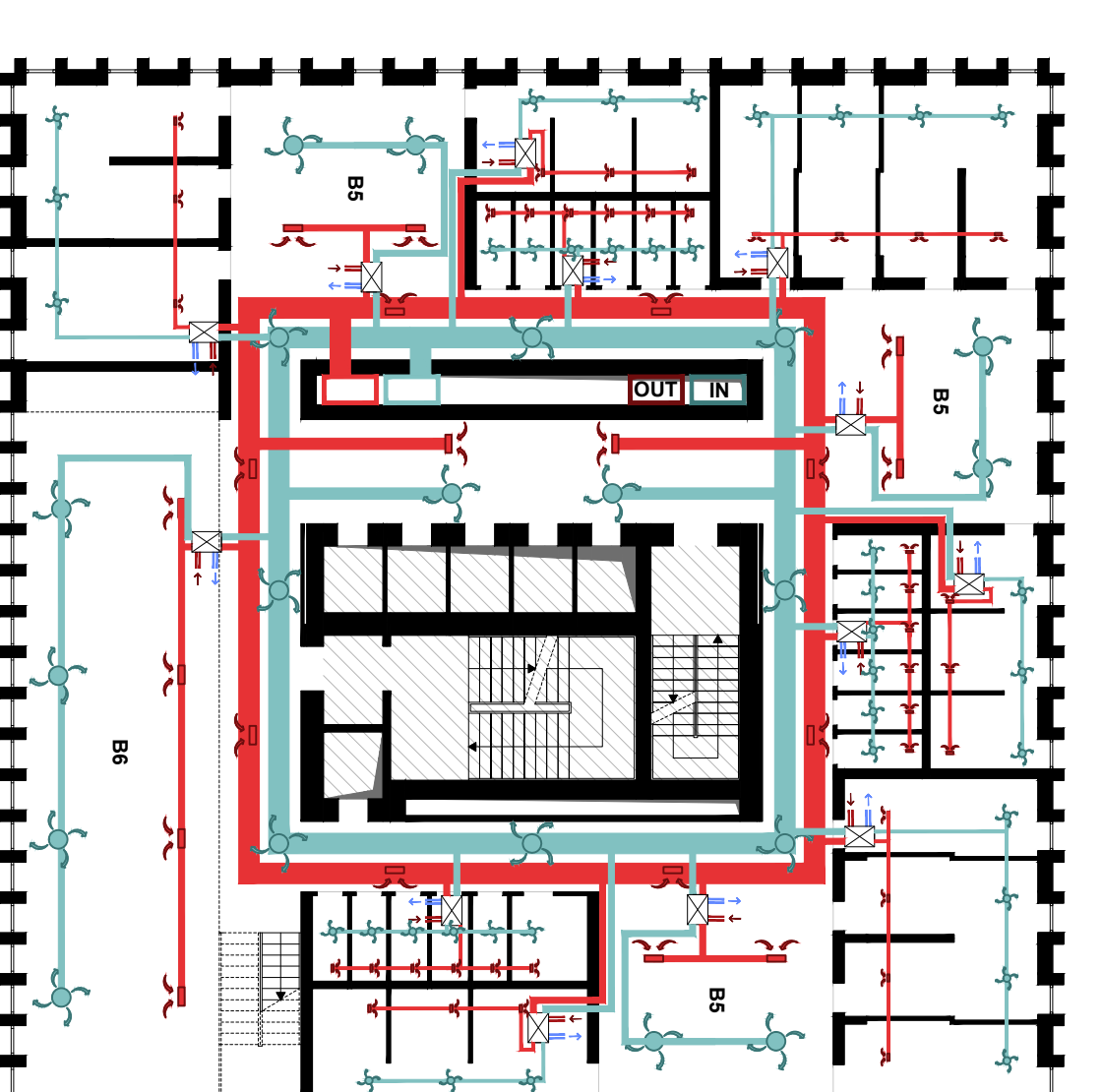
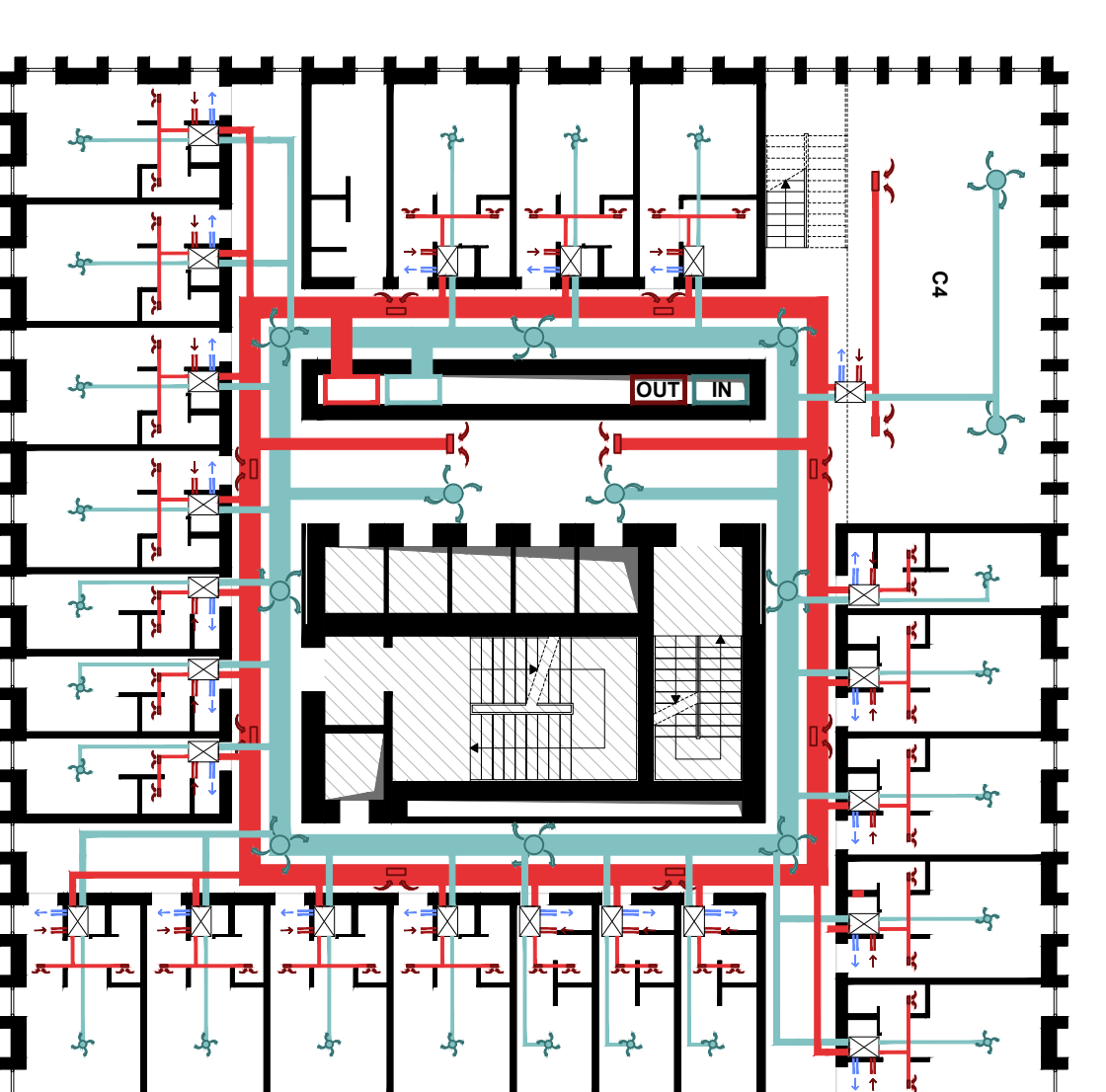
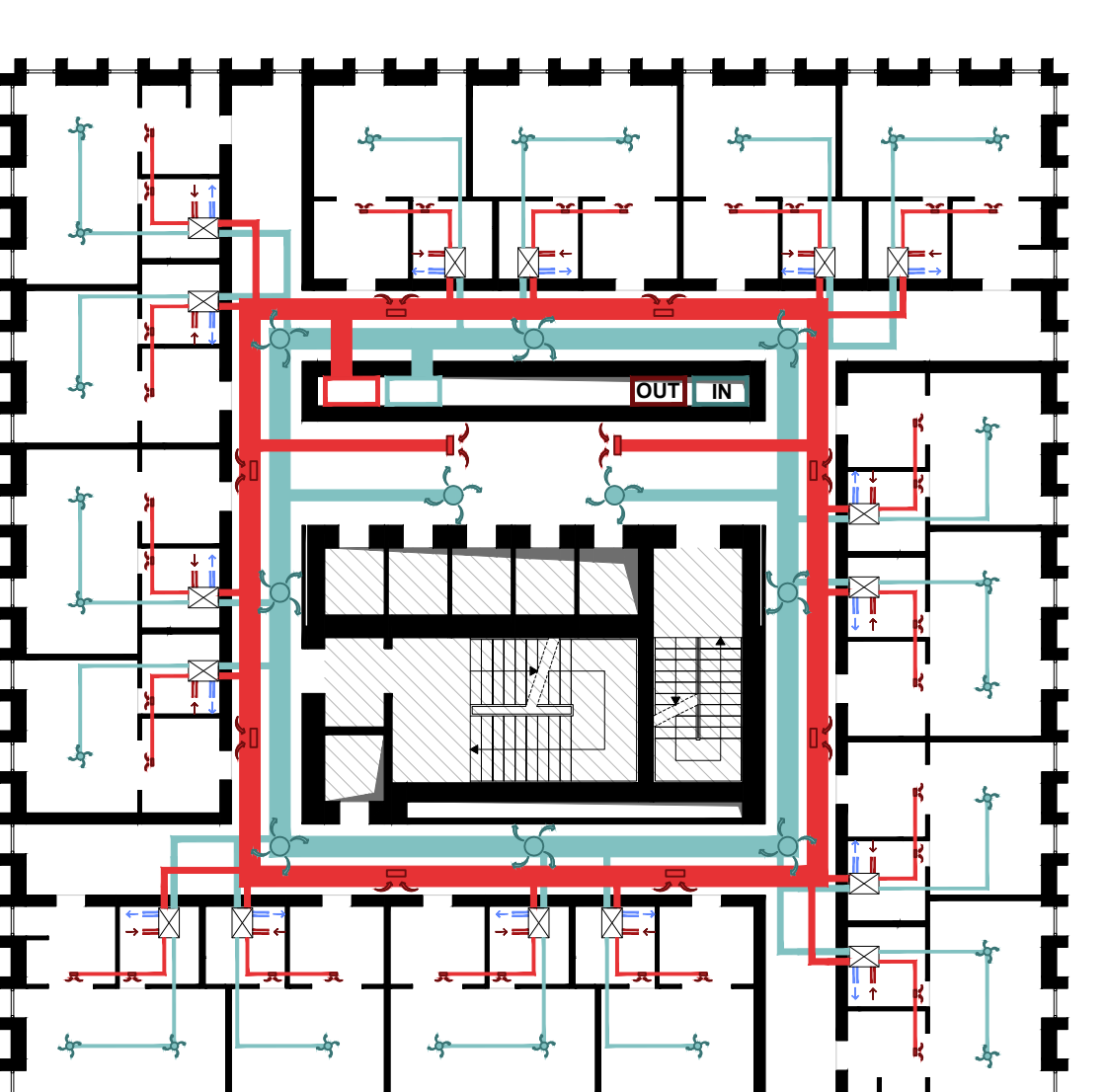
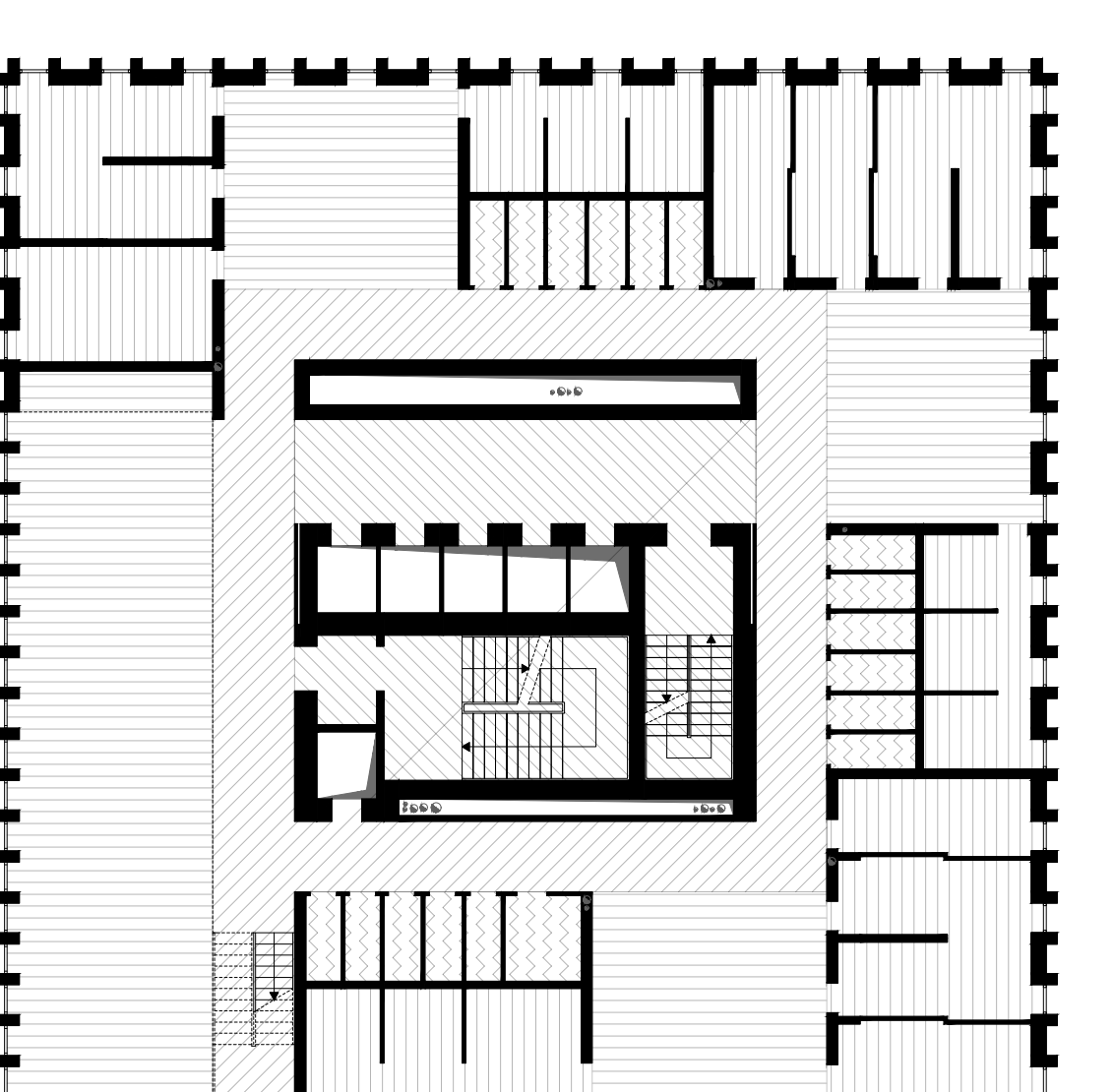
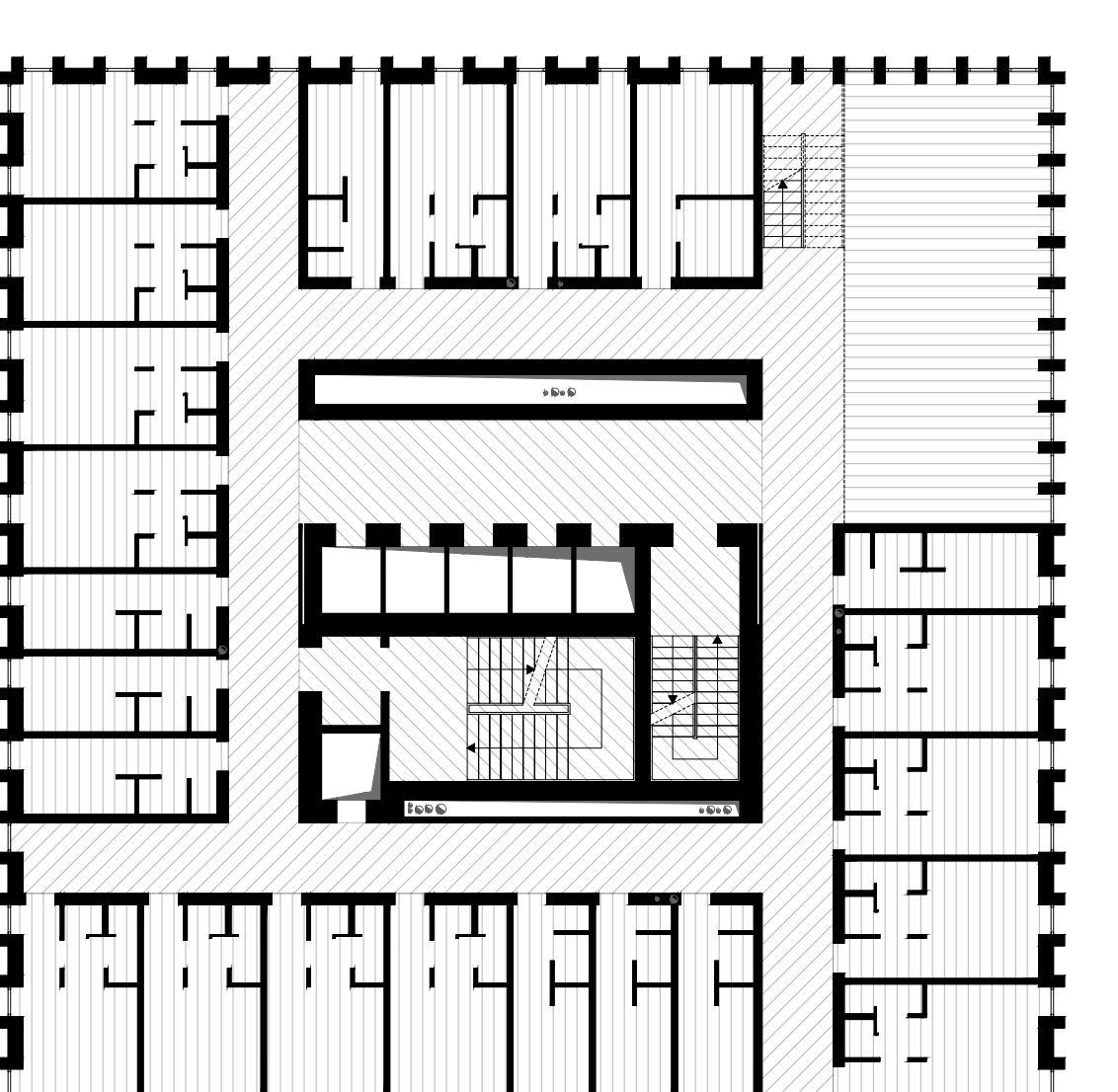
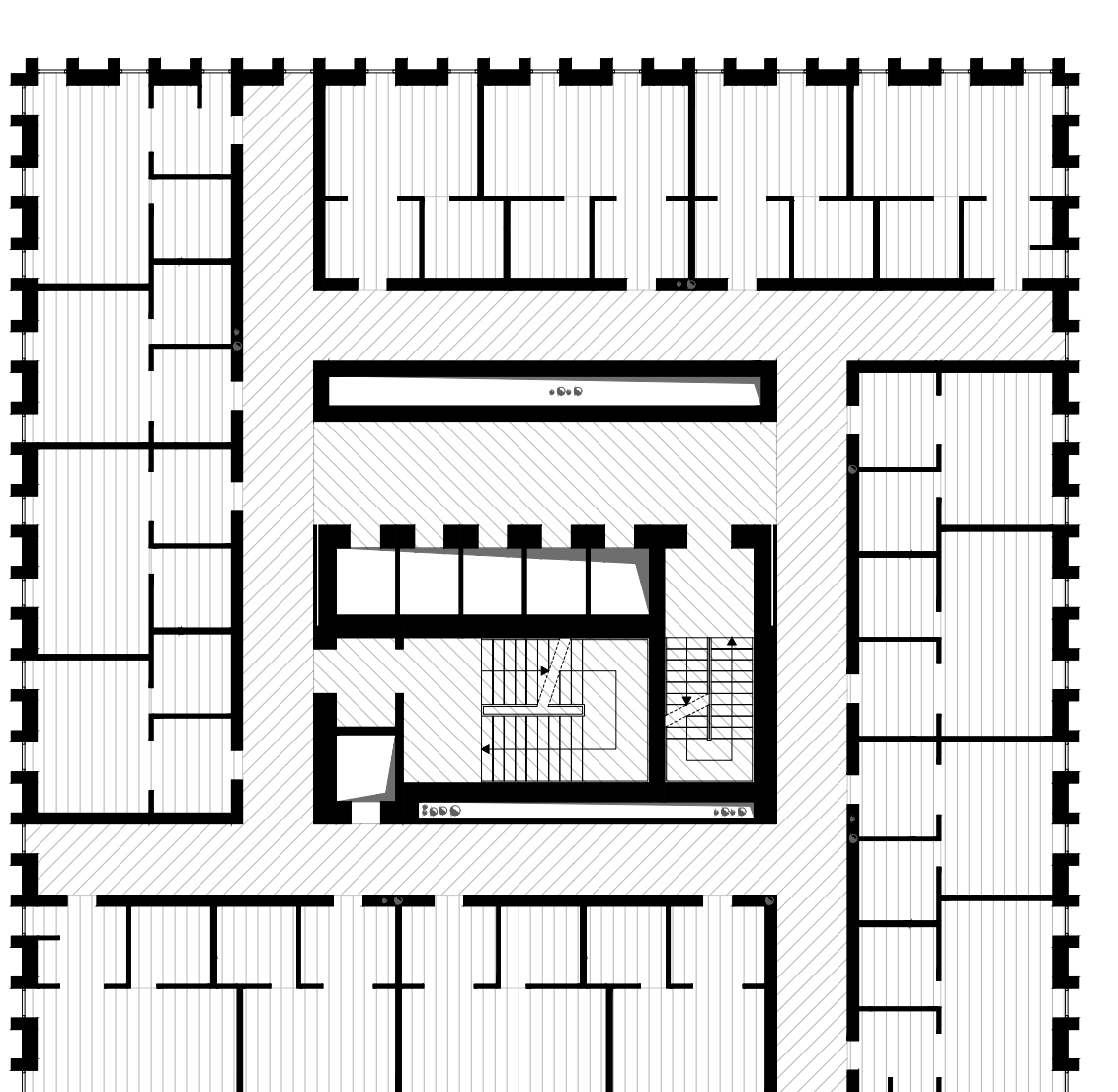


- Camere ventilazione forzata - sistema AC indipendente
- Spazi comuni ventilazione forzata - sistema AC 2P/1/2P/E
- Corridoi ventilazione forzata
- Scale ventilazione naturale
- Bagni comuni ventilazione forzata - sistema AC 2P/1/2P/E



Caratteristica dimensionale	UTA A		UTA B	
	Più	Meno	Più	Meno
Dimensione fuori-parete (mm)	140	140	140	140
Dimensione in-parete (mm)	60	60	60	60
Spessore (mm)	40	40	40	40
Spazio libero (mm)	20	20	20	20
Spazio utile (mm)	20	20	20	20
Spazio utile netto (mm)	20	20	20	20
Spazio utile netto (mm)	20	20	20	20
TOTALE PORTATA (m³/h)	37.200			

Caratteristica dimensionale	Condotti di daltino	
	Più	Meno
Portata (m³/h)	1.200	1.200
Velocità (m/s)	4	4
Spessore (mm)	40	40
Spazio libero (mm)	20	20
Spazio utile (mm)	20	20
Spazio utile netto (mm)	20	20
TOTALE PORTATA (m³/h)	37.200	

Caratteristica dimensionale	Condotti principali	
	Più	Meno
Portata (m³/h)	1.200	1.200
Velocità (m/s)	4	4
Spessore (mm)	40	40
Spazio libero (mm)	20	20
Spazio utile (mm)	20	20
Spazio utile netto (mm)	20	20
TOTALE PORTATA (m³/h)	37.200	