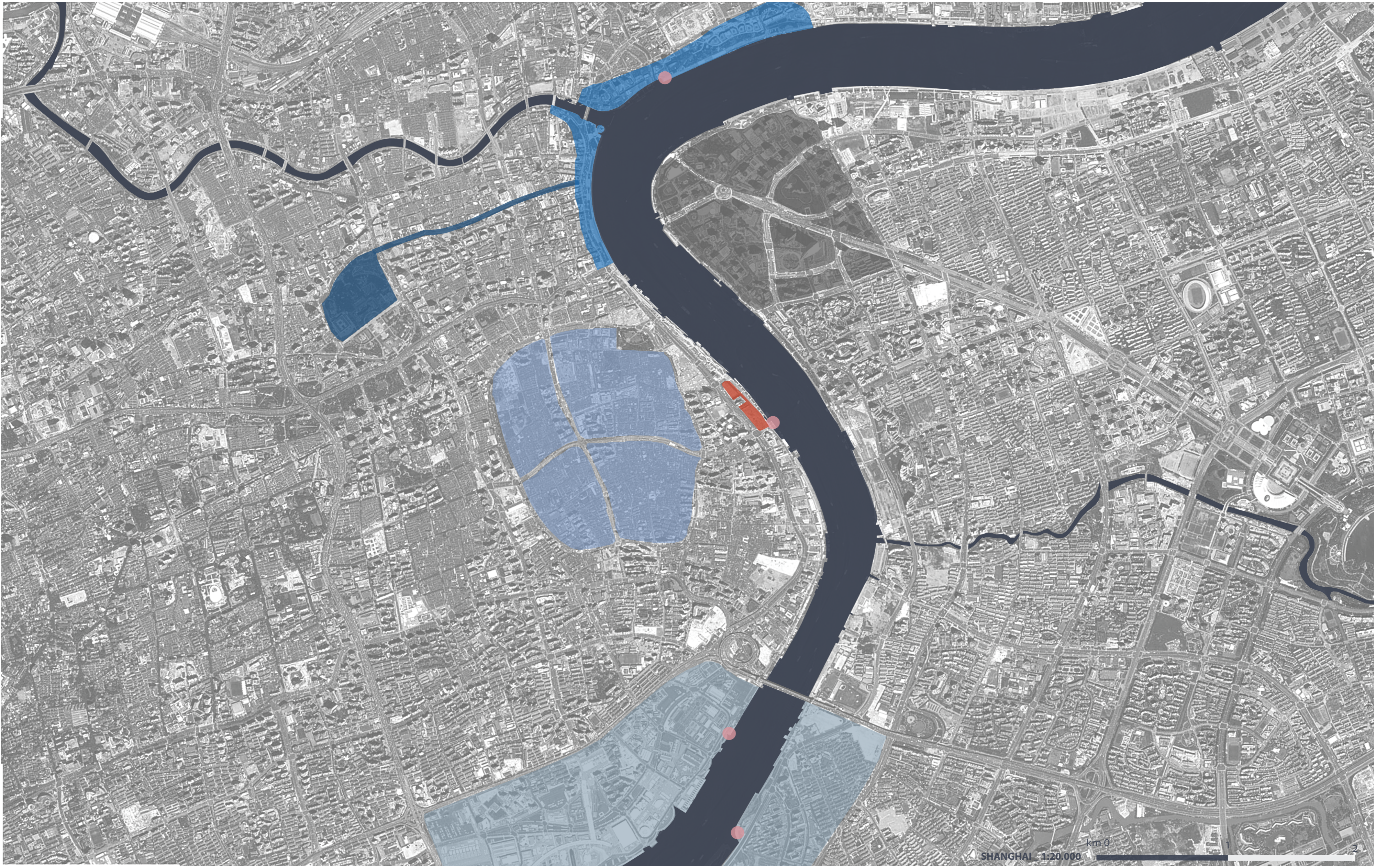


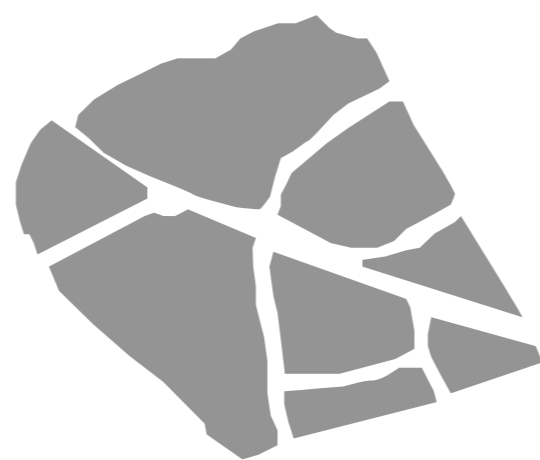
LOCALIZATION



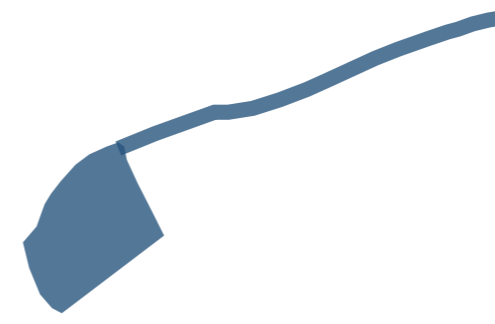
Historical city situated near Huangpu river. Two historical phases generated the development of the city: first period during Ming dynasty (1554) in which saw the rise of first wall to defense from Japanese. Second period during Qing dynasty (1723), when Shanghai became the most important port of region. For this reason, Shanghai became a strong attraction for European country during XIX century.



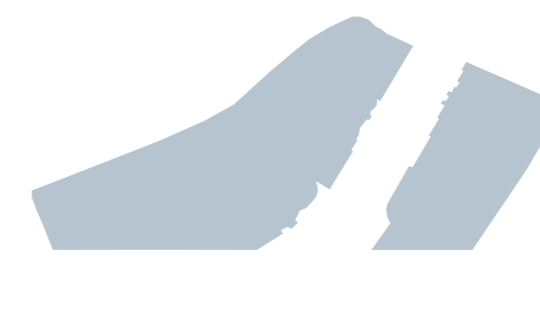
The Bund is an avenue that borders the right bank of the Huangpu River and is one of the most important architectural symbols of Shanghai. Economic development in the nineteenth and twentieth centuries transformed this place that became the commercial and financial center of Shanghai. It hosted many foreign banks. Between the '70s and '80s, most of the buildings of the Bund were restored to become hotels, banks or financial institutions.



Pudong is a district of Shanghai, located along the east side of the Huangpu River, across from the historic city center of Shanghai in Puxi. It is administered as the Pudong New Area, a state-level new area. Pudong is home to the Lujiazui Finance and Trade Zone and the Shanghai Stock Exchange and many of Shanghai's best known buildings, such as the Oriental Pearl Tower, the Jin Mao Building, the Shanghai World Financial Center and new Shanghai Tower.



Nanjing Road is the main shopping street of Shanghai and is one of the world's busiest shopping streets. Today's Nanjing Road comprises two sections, Nanjing Road East and Nanjing Road West. Nanjing Road is located in the city center, running in a west-east direction. Its eastern section is in Huangpu District and extends from The Bund west to **People's Square**.



Expo 2010, officially Expo 2010 Shanghai China was held on both banks of the Huangpu River from 1 May to 31 October 2010. It was a major World Expo in the tradition of international fairs and expositions, the first since 1992. The theme of the exposition was "Better City – Better Life" and signifies Shanghai's new status in the 21st century as the "next great world city"



Huangpu River Ferry As many bridges, tunnels, and subways are built, people have much more choices when traveling across the Huangpu River. However, ferryboats are still popular choices for pedestrians and cyclists because of their convenience and low price. **Huangpu River cruise.** The three hour trips leave at 2PM. At the Bund's southern ferry port with the following: One hour, two hour and three hour cruises on the Huangpu.

RELATIONS

