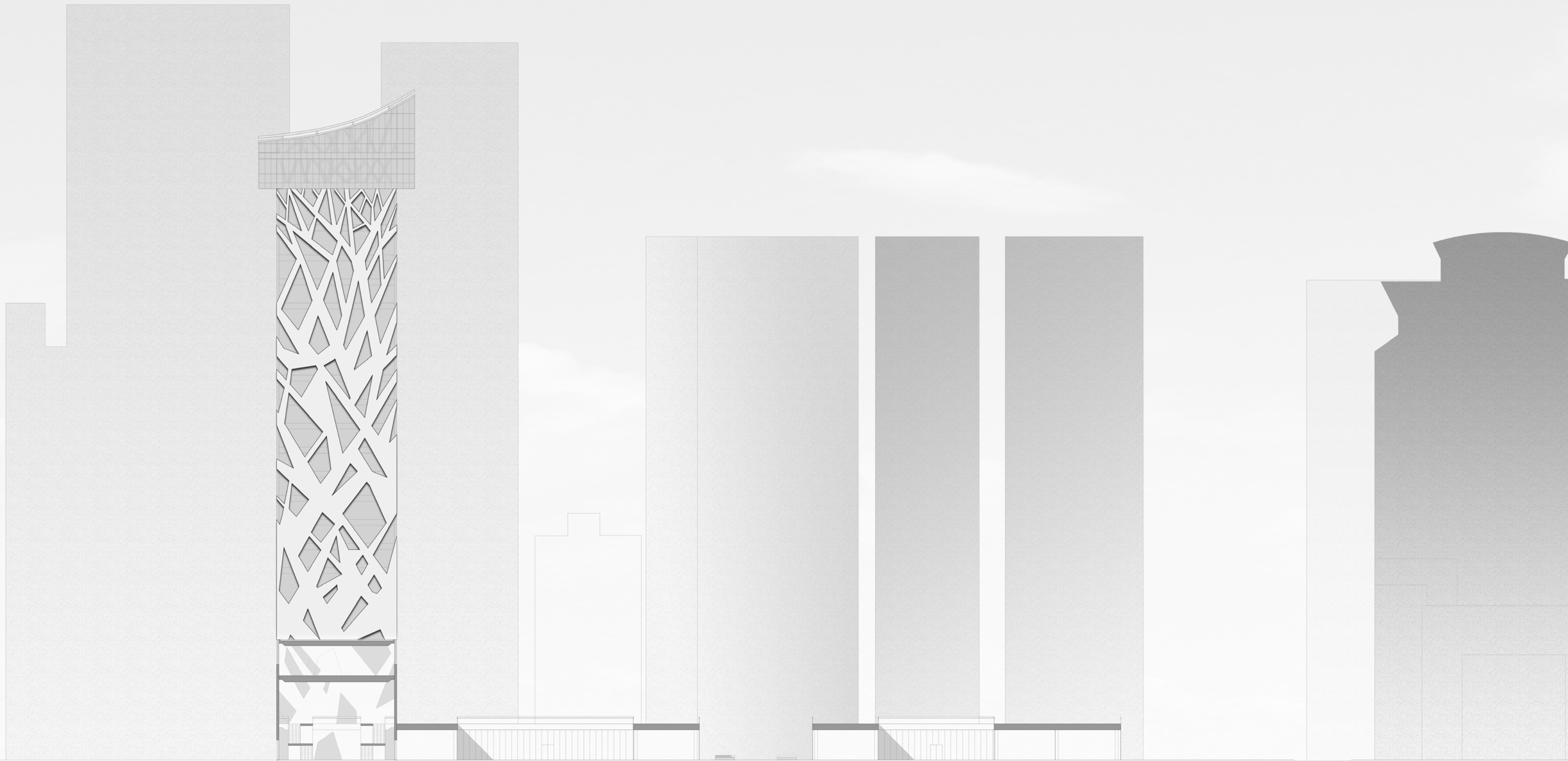
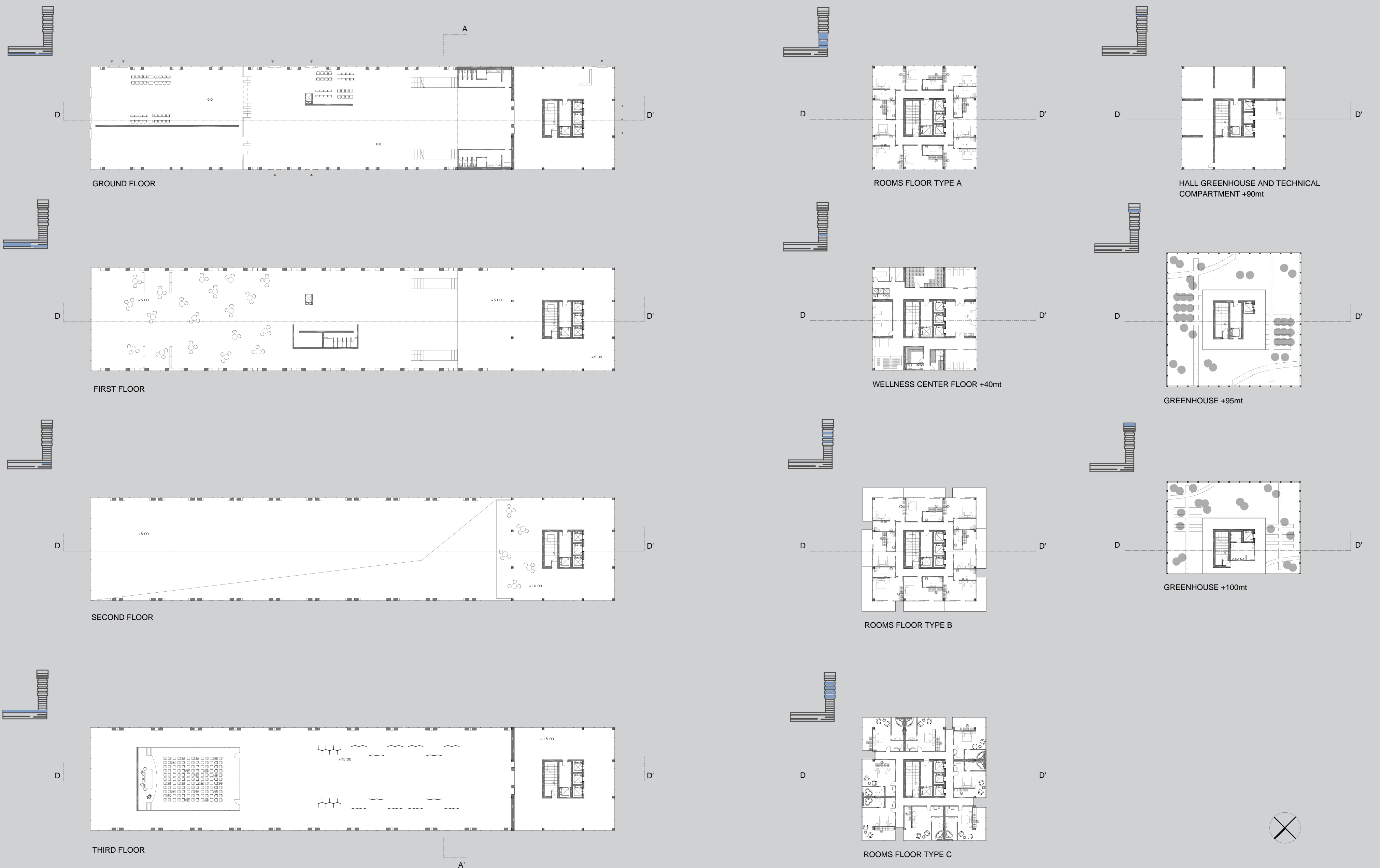


SECTION A - A'



PLANS



The project aims to rethink the Ferry Terminal over the Huangpu River in the district Shiliupu. The district is located about halfway between the Bund and the South Bund Soft Spinning Material Market, not far from Yuyuan Garden.

This project area is in front of the newly developed Pudong district, home to the financial center of the city, which is undergoing, in recent years, which includes a major overhaul of its urban masterplan to build tall skyscrapers as an expression of Chinese economic development.

Among these we can list:
the Jin Mao Tower (420.6 m with 88 floors), the TV tower

in Shanghai called "Pearl of the East" (468 meters) and the Shanghai World Financial Center (approximately 492 m) over the 2008 and is currently the third tallest skyscraper in the world. In 2008, the foundations were laid for the foundation of the Shanghai Tower, is scheduled to finish construction in 2014.

For this project it will consider three main points that led me to the idea final: insertion into context, the connection to the river and the identification of the place. The initial idea was to think of a building covering the entire area available for the project, but trying to create it in a completely non-invasive. From this was born the concept of this great regular platform that develops in a height of ten

meters mono plane. It was decided to design this space so high for the Civil Service that covers the building. This building, however, has a fully walkable roof space which returns to the city for pedestrians and public thought. In the development of the project could not forget the relationship with the verticality of the surrounding environment, which is why I thought the inclusion of two vertical elements (the two towers) they closed the whole structure . This is relevant for the purposes of proper integration , the study with this contemporary vision of urban development. Behind and in front of the area there are many skyscrapers being a newly developed area. The two towers are about a hundred meters one and make a

sort of theatrical backdrop of the river. This height was determined by their personal will to create a line imaginary part from the towers to a height of zero backwaters of the river. The focus of the development is one of the towers (including of course the body / central platform) giving an intended use of hotel / guest service at the Ferry Terminal. The new skyscraper will be called " EIGHT CORNERS TOWER ."

The design of this building was inspired by both the modern buildings vertical and traditional element of the Pagoda . In fact, the tower evokes the traditional scheme of the pagoda with the range of floors and roofs integrated throughout the building and closes its coverage with

the traditional curved roof typical of the tradition. The cover has one deliberately pitched the ridge facing the inside of the building and into the other tower that will have the same coverage but speculate in order to create a sort of imaginary crowning horizontal coverage of the entire built.