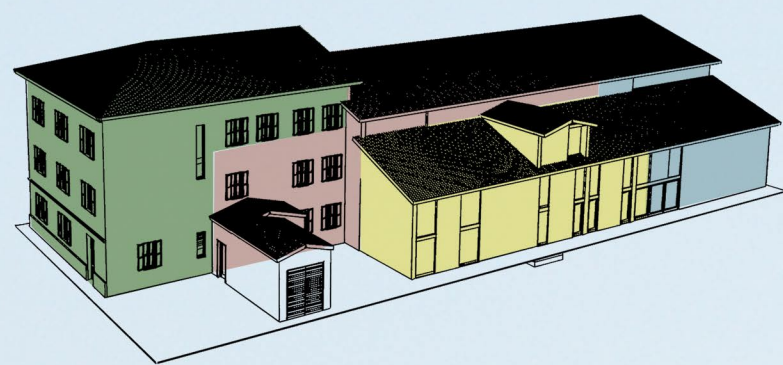


EVOLUZIONE STORICA

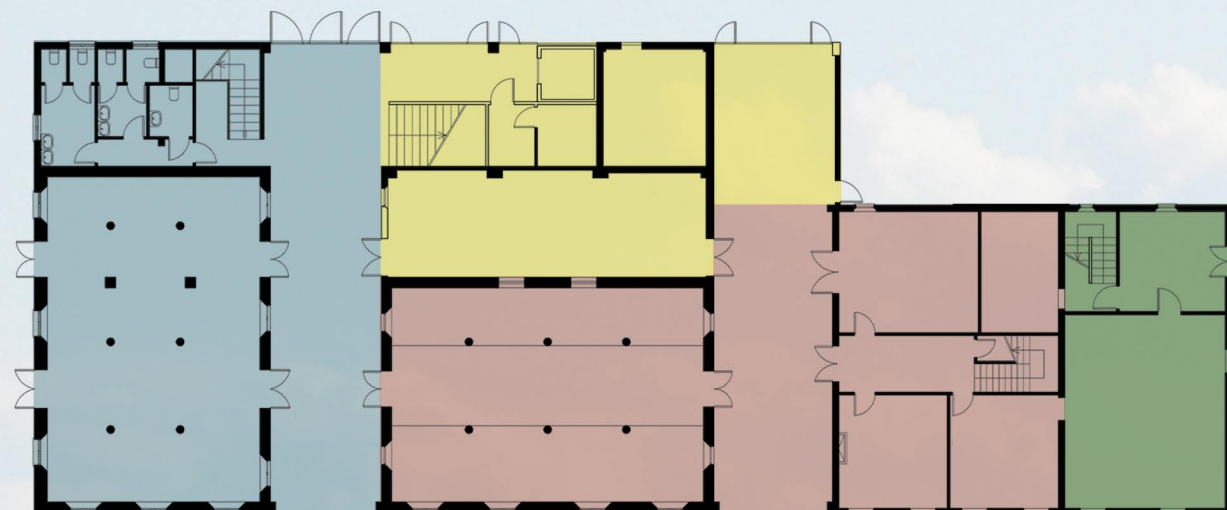


1920: prima costruzione

1938/39: stalletta e portico (rifatto nel 1994)

1941/42: seconda porta morta e stalla

1960: ampliamento abitazione



ELEMENTI CARATTERISTICI

Tipologia a porta morta (doppia)



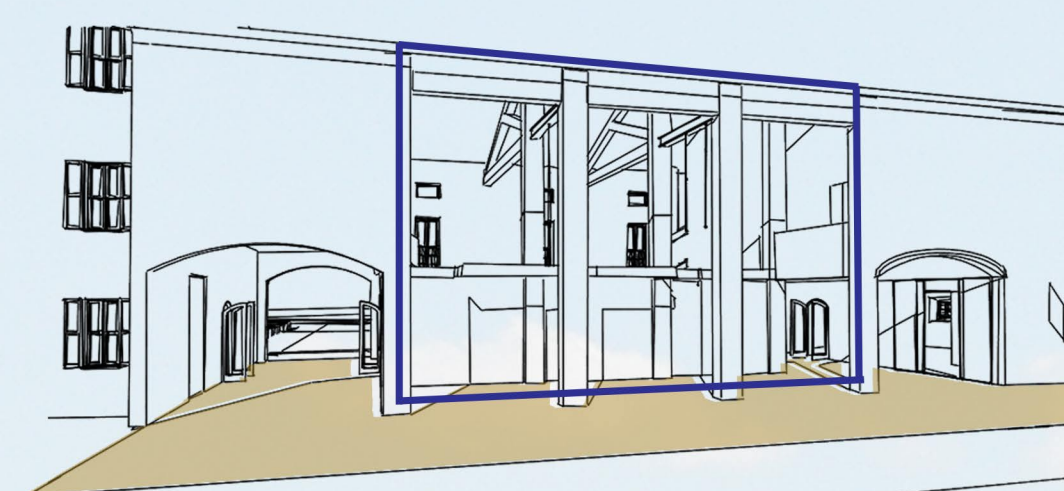
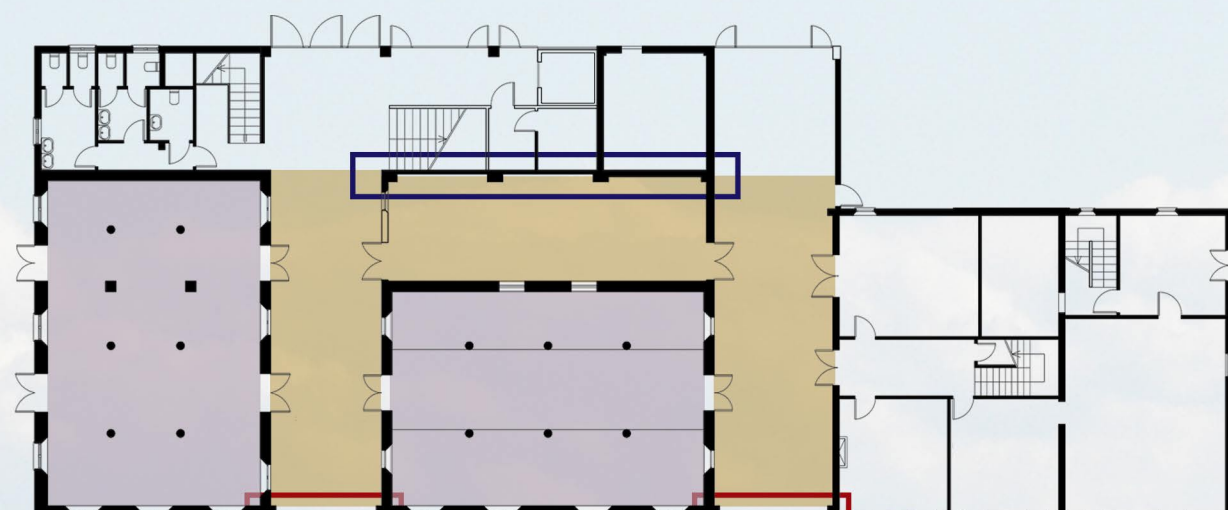
Probabile presenza della "barchessa"



Spazi promiscui (passaggio/ricovero attrezzi)



Stalla



MATERIALI

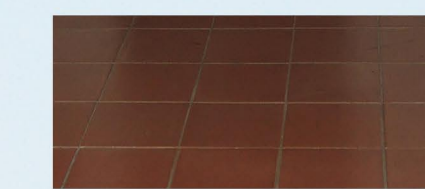
Pavimento in laterizio storico (stalla)



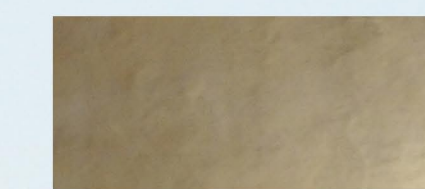
Pavimento in laterizio storico (porta morta)



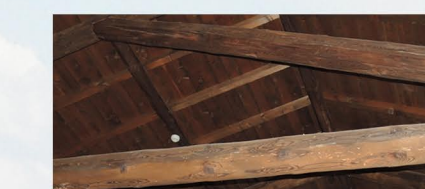
Pavimento in cotto moderno



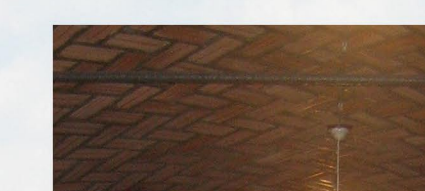
Intonaco



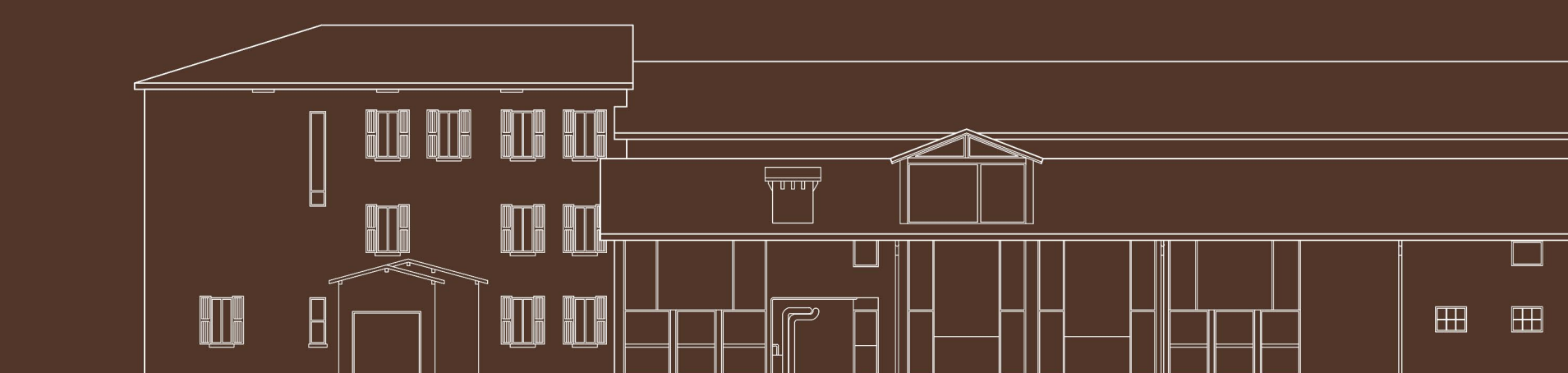
Copertura lignea



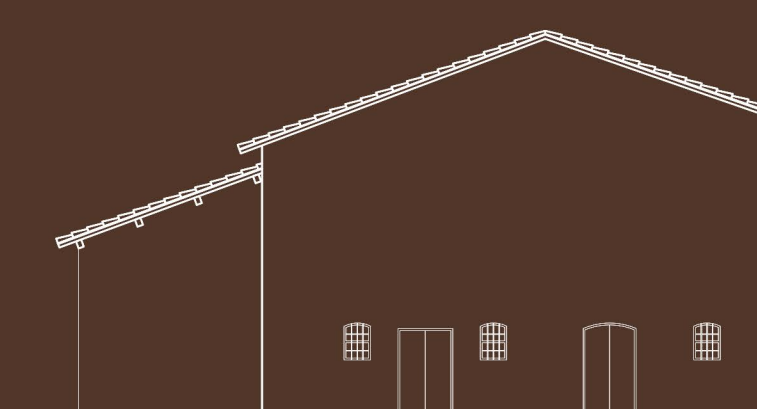
Volte in laterizio



Pianta piano terra



Prospetto sud



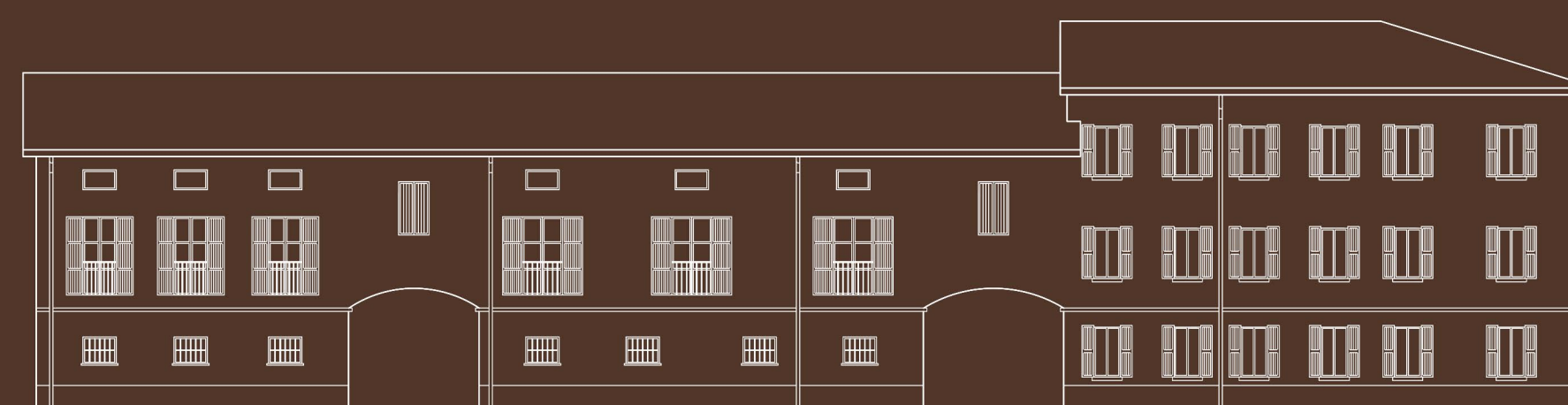
Prospetto ovest



Prospetto est



Pianta piano primo



Prospetto nord



Sezione longitudinale

