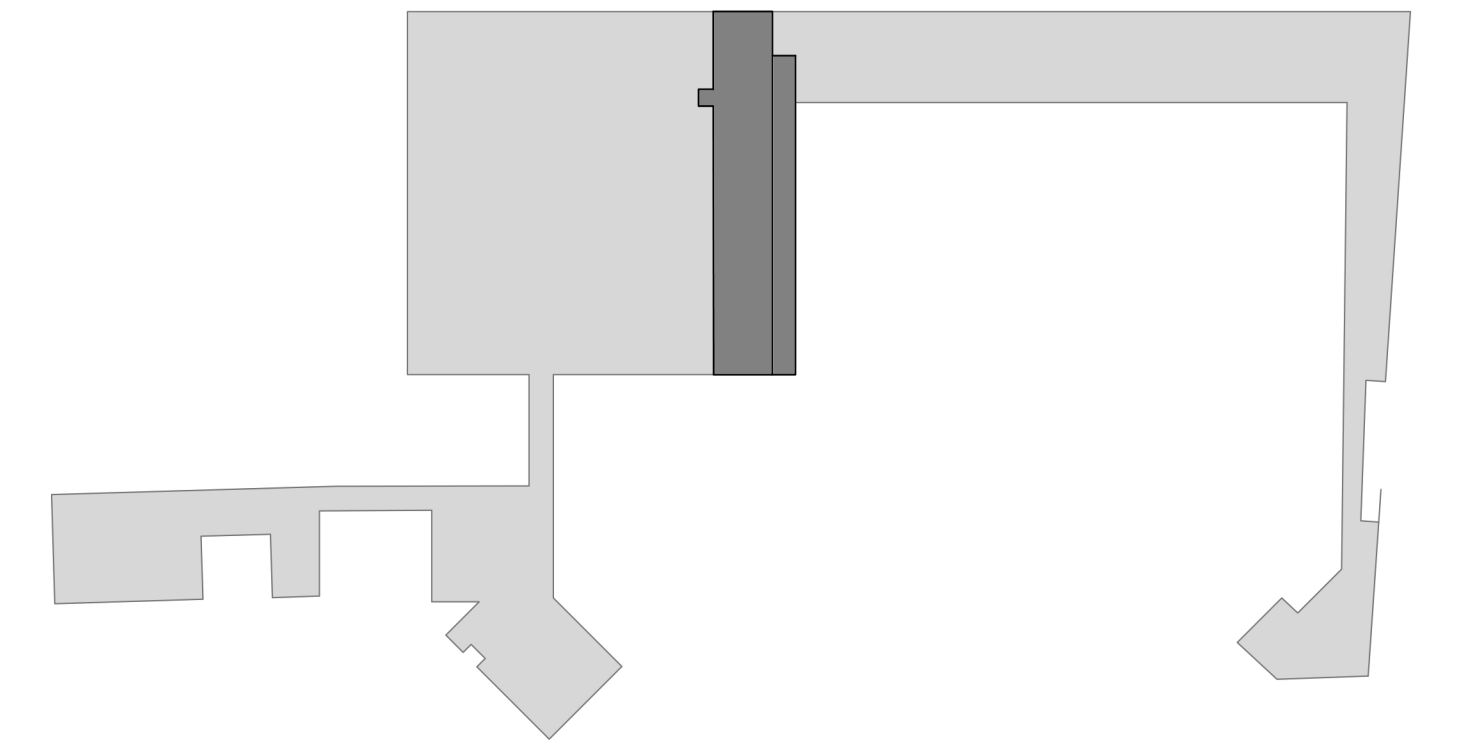


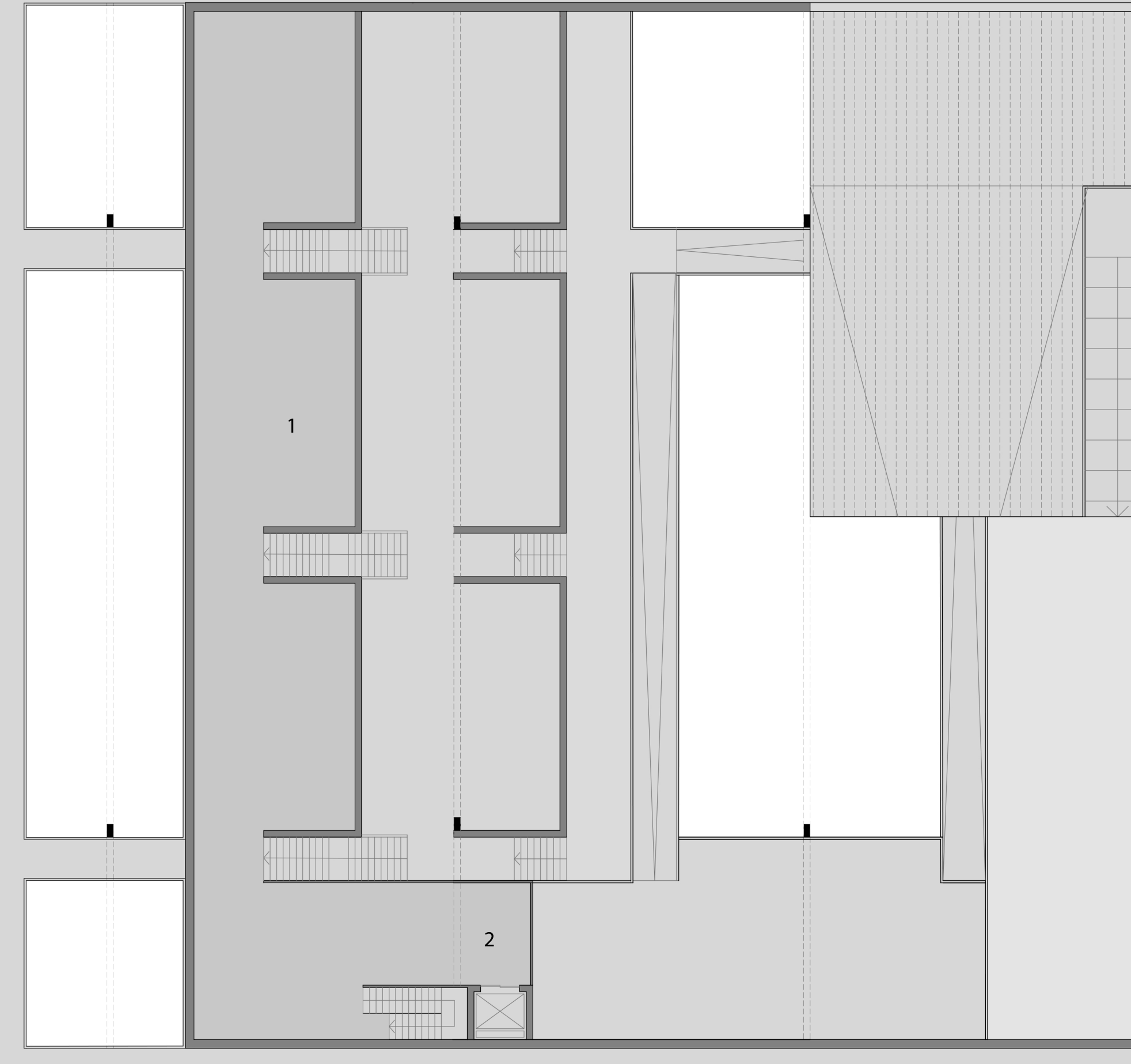
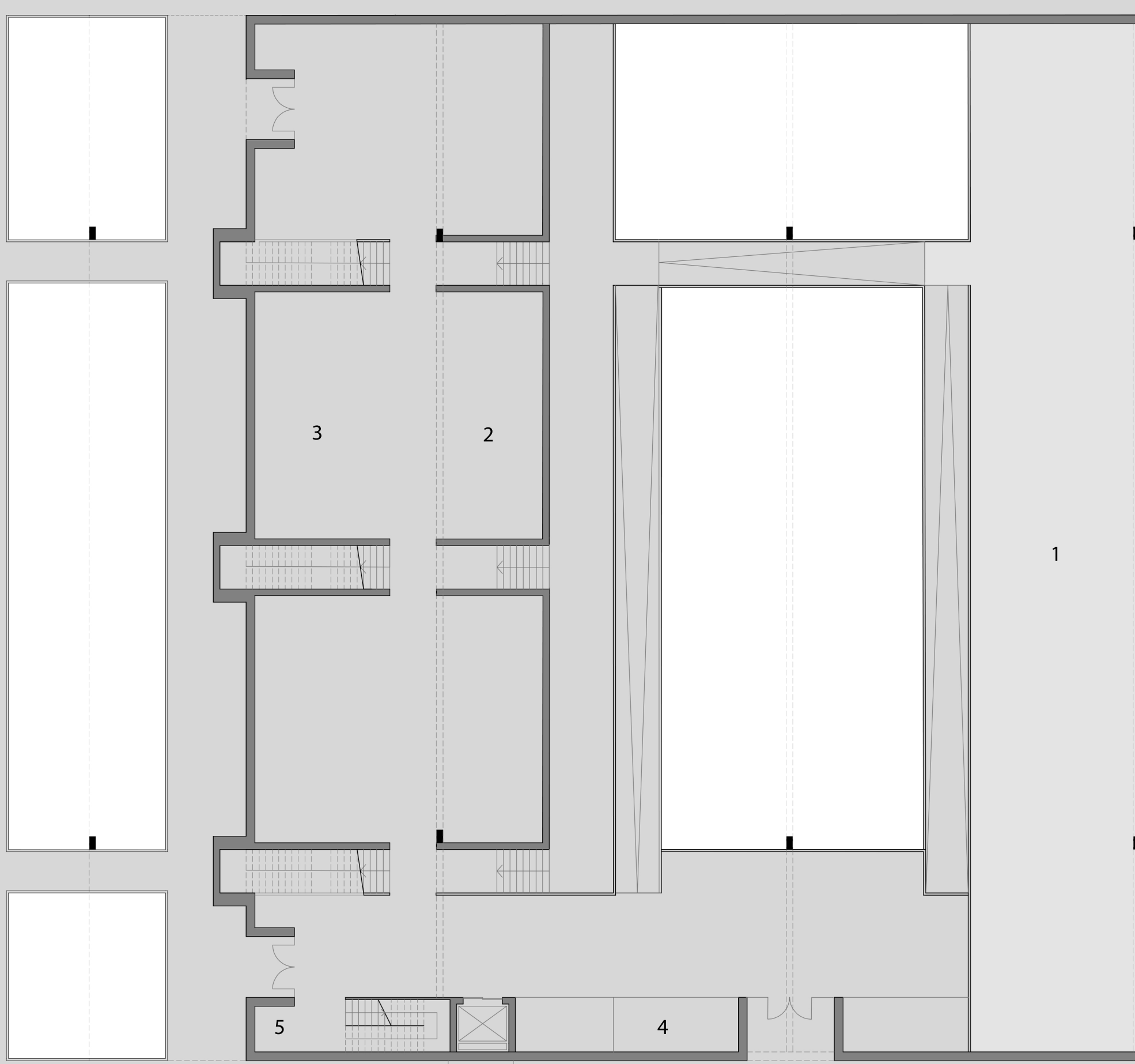
-5.5 m

First level : -5 m

- 1 Workshop
- 2 Temporary exhibition
- 3 Men toilet
- 4 Women toilet
- 5 Storage
- 6 Green court yard

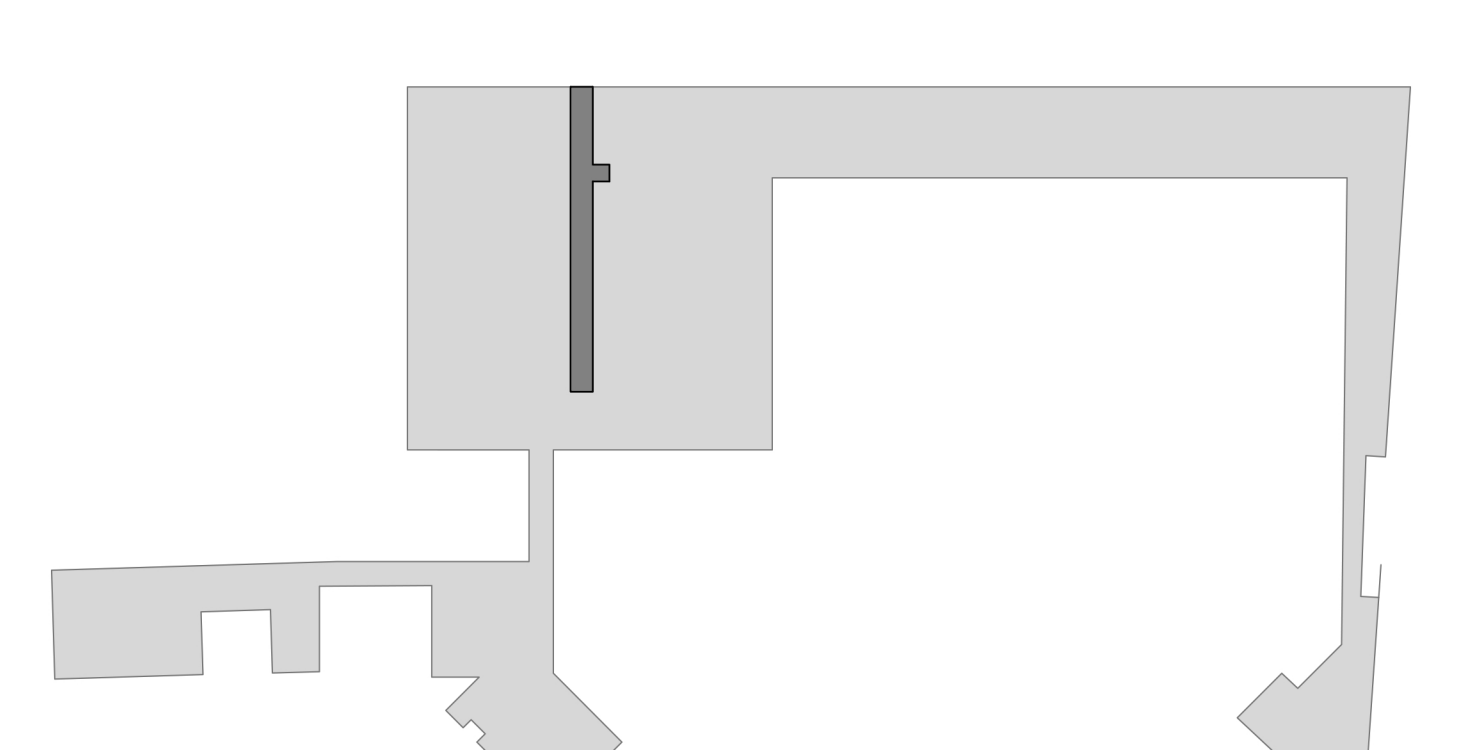


-2.5 m



Third level : + 3.6 m

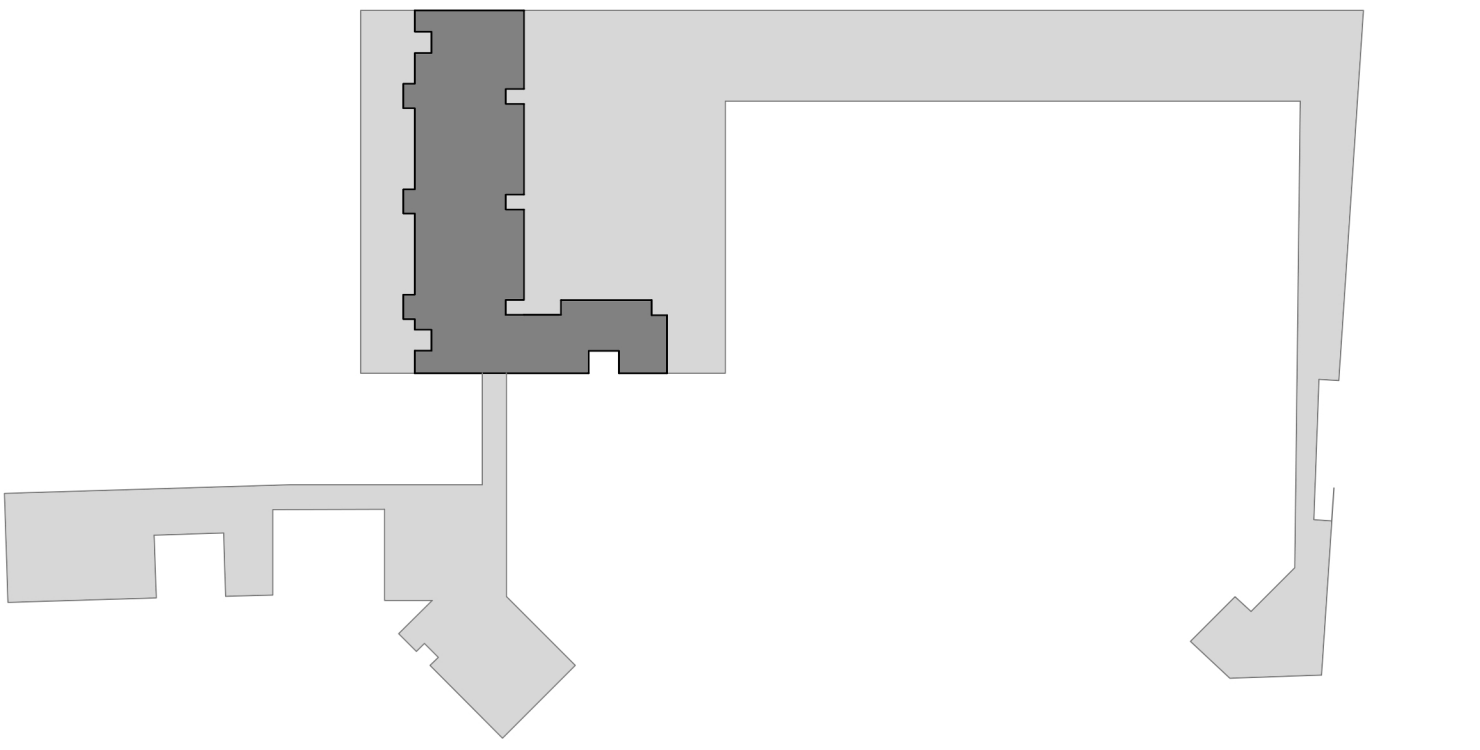
- 1 Reading area
- 2 Rest



-1.5 m

Second level : +0.0 m

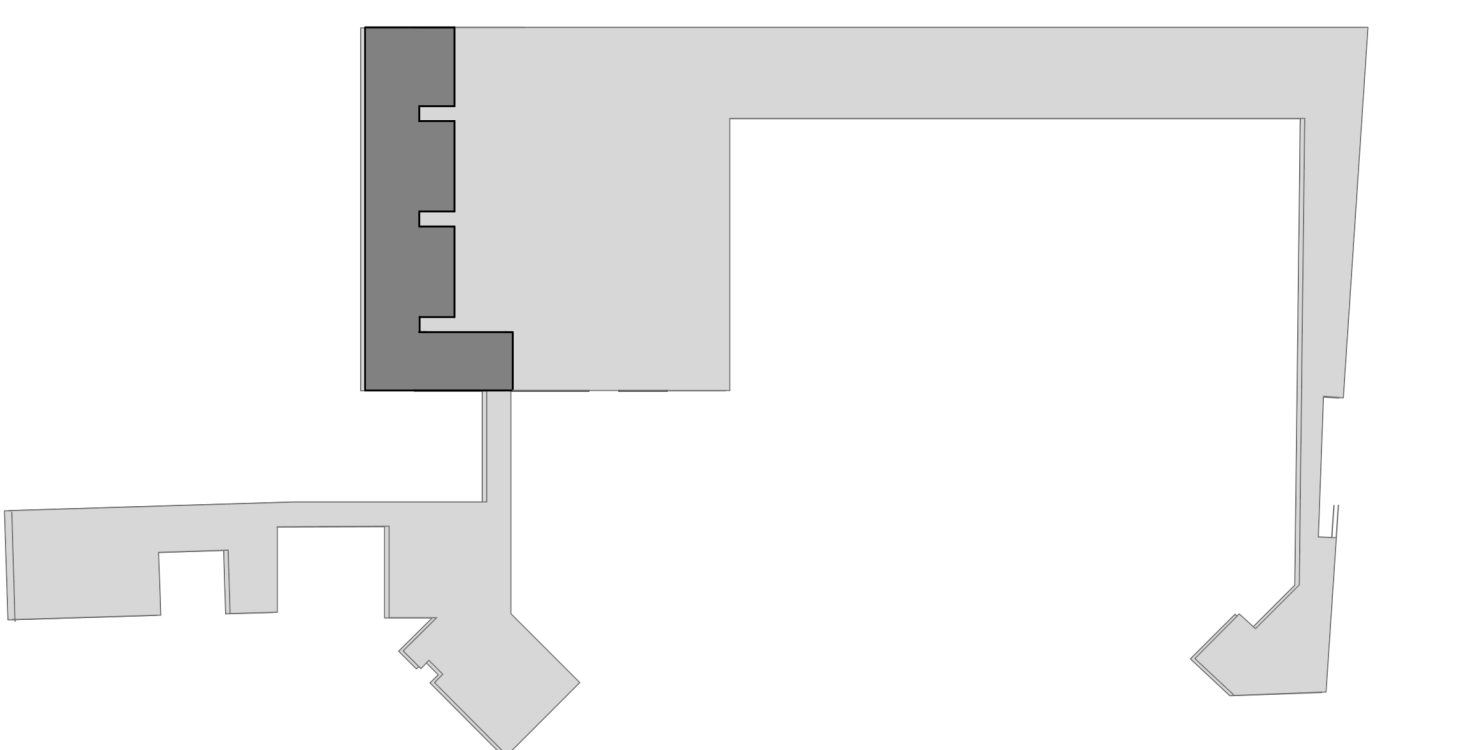
- 1 Temporary exposition
- 2 Reading area
- 3 Studying atelier
- 4 Information
- 5 Storage



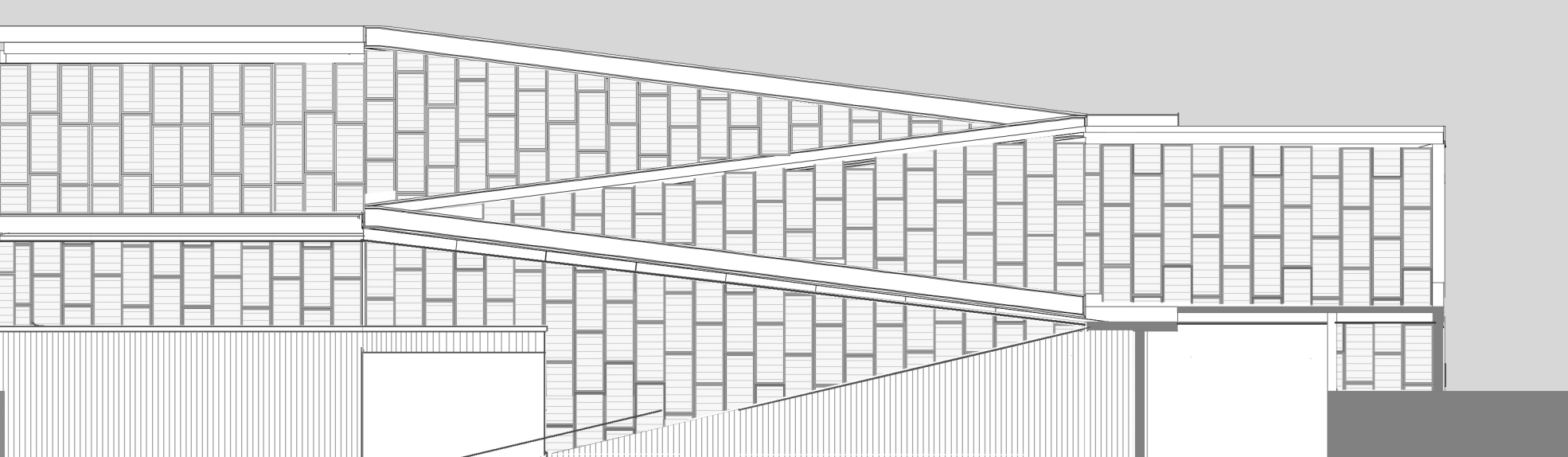
+ 0.0 m

Porject: Student Plaza

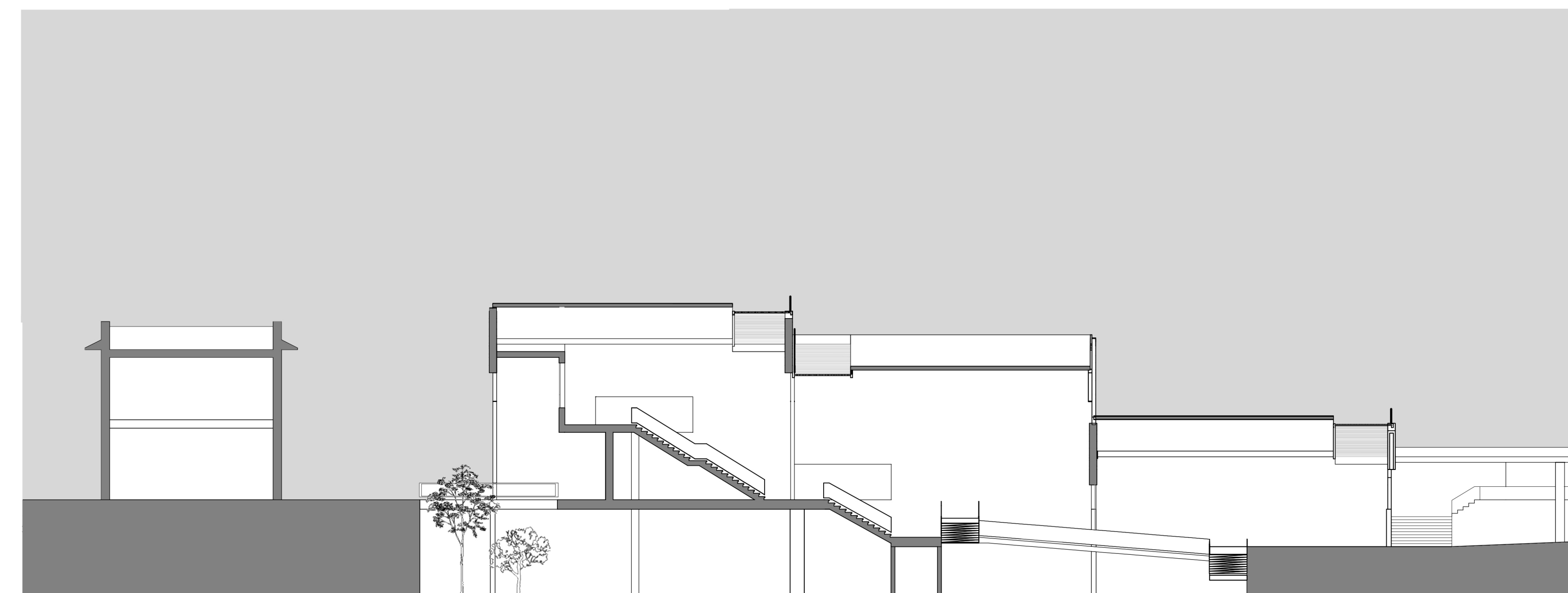
A plaza for student, to the front of the university, is proposed to define the western edge of the public square. The approach is to consolidate the theme of open space in the plaza to present of structures. The plaza is a place to sit, read, work, lie down, rest, or just appreciate the view. In this project, architectural measures and elements are chosen to ensure transparency and movement in the building. Transparency is important in order to achieve the relationship between university and building.



+ 3.6 m



SECTION A-A



SECTION B-B