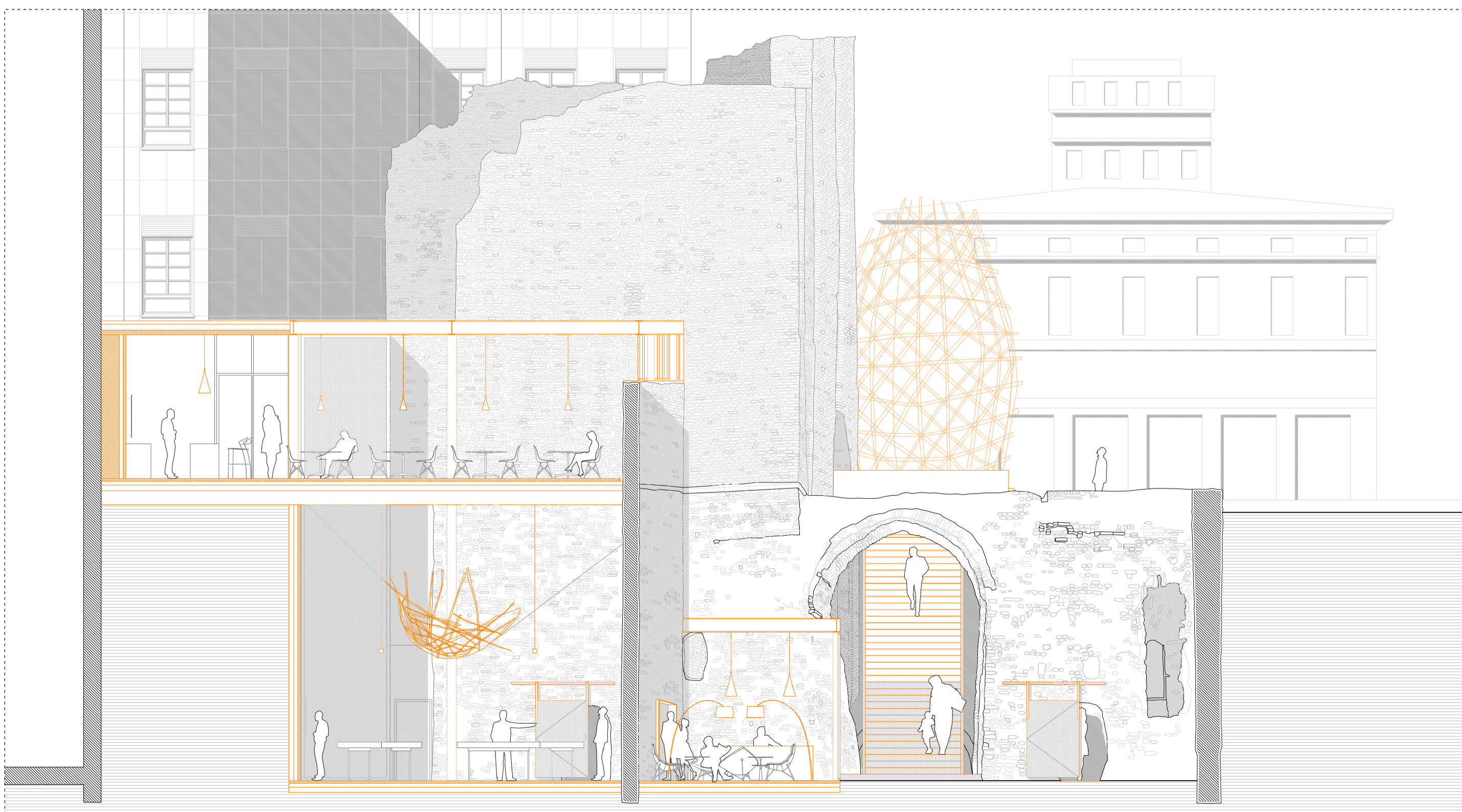
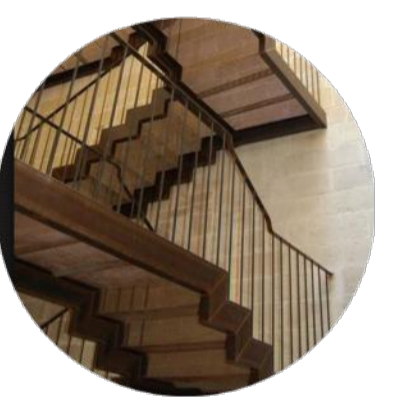


Pianta quota +7.8m 1:100

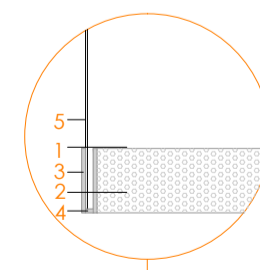


Sezione BB' 1:100



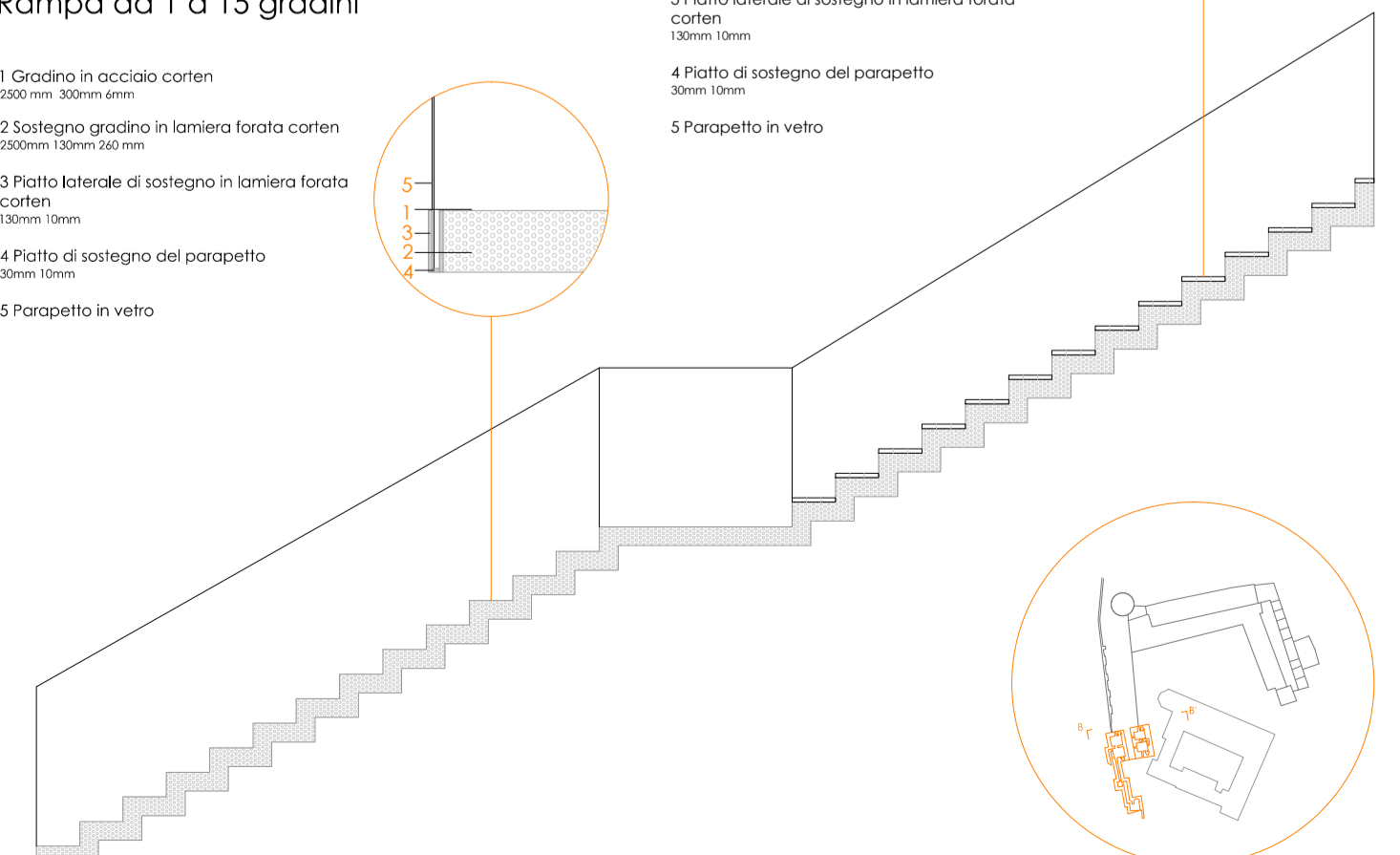
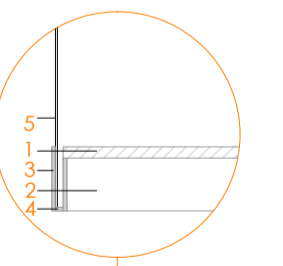
Rampa da 1 a 15 gradini

- 1 Gradino in acciaio corten
2500mm 300mm 40mm
- 2 Sostegno gradino in lamiera forata corten
2500mm 130mm 240mm
- 3 Piatto laterale di sostegno in lamiera forata corten
130mm 10mm
- 4 Piatto di sostegno del parapetto
30mm 10mm
- 5 Parapetto in vetro



Rampa da 15 a 45 gradini

- 1 Gradino in massello di legno
2500mm 300mm 30mm
- 2 Sostegno gradino in lamiera forata corten
2500mm 130mm 240mm
- 3 Piatto laterale di sostegno in lamiera forata corten
130mm 10mm
- 4 Piatto di sostegno del parapetto
30mm 10mm
- 5 Parapetto in vetro



Dettaglio scala esterna 1:50