

City Expansion



Roman period

The structure of the roman city is characterized by a very regular grid subdivision, blocks almost square, symmetrically arranged. This shape of urban design was originally a square corresponding to the north to via Benedettine, to the east with via Dogana, to the west via Cavalletto and via Sopramuro to the south. Later this wall limit was extended until via S. Eufemia and via San Sisto.



Medieval period



Renaissance period



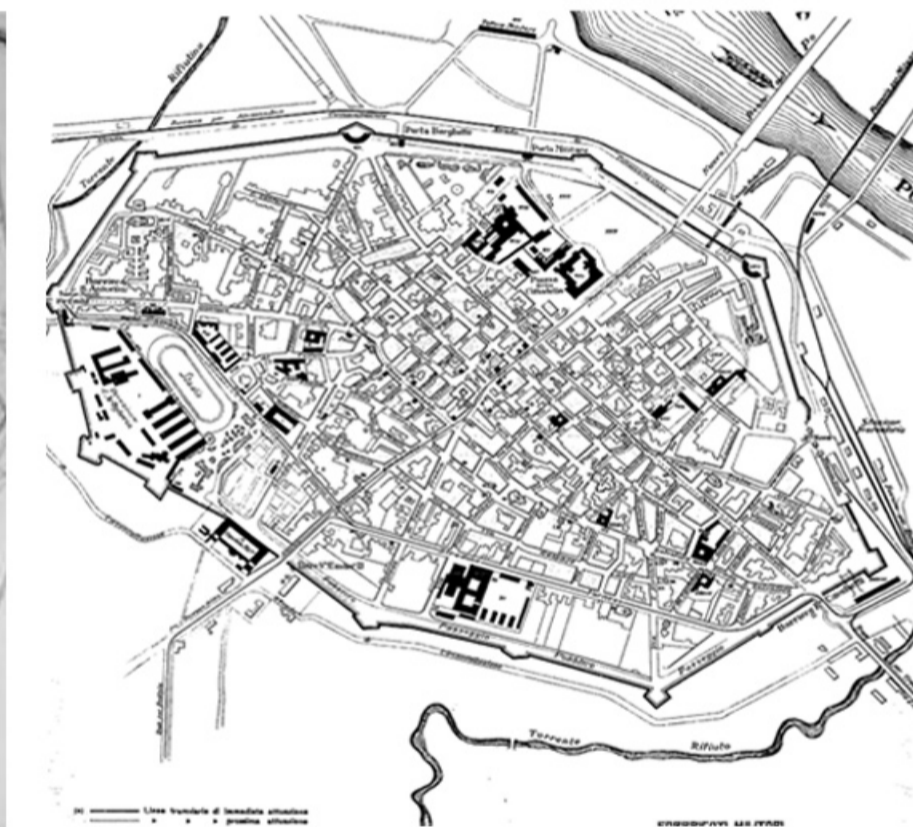
Map of the city in 1435



17th century



Map of the city in 1821



Map of the city in 1905

PR.G. - a city planning instrument

In 1935 Piacenza saw its first Piano Regolatore Generale. This plan introduces zoning as a functional and rational reason. Fundamental elements of this PRG, designed by Ing. Cella, were the great military and industrial sectors and the construction of new squares. In ancient times, where these were located, the trade barriers. Another element was the construction of popular and residential neighborhoods for the factory workers.

In 1955 the municipality gave to Dodi the charge to design a new PRG. In this new plan, there was a great increase in the provision for residential and industrial settlements, and the road is seen as an element of organization and definition of space, while the suburbs continued to expand in a discontinuous way and without a precise design.

The 1998 P.R.G., by Federico Oliva and Giuseppe Campos Venuti, set predictions related to a subsequent increase in population and economy. These goals are aimed at a reorganization and transformation of the city through the equalization approach. It wants to guarantee the integration between urban planning and ecology, in order to build a "sustainable city", so the process of urban transformation meets the needs of the present time without compromising those of future generations, containing the expansion in order to reduce the use of agricultural soil.



POLITECNICO DI MILANO

"Architecture in multi-scale project"

Architecture and Society School- Campus Piacenza

Supervisor : Prof. Roberto Spagnolo

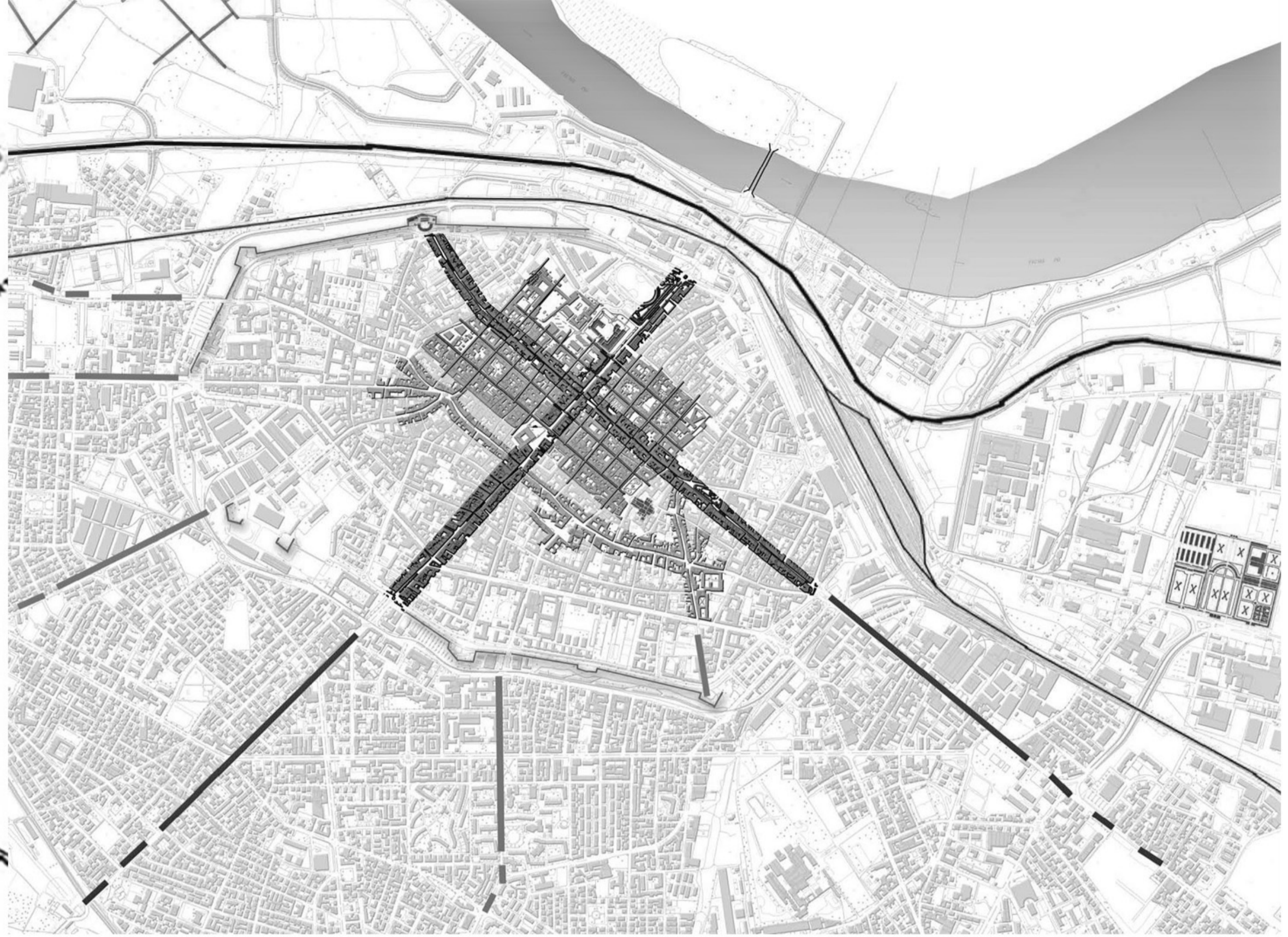
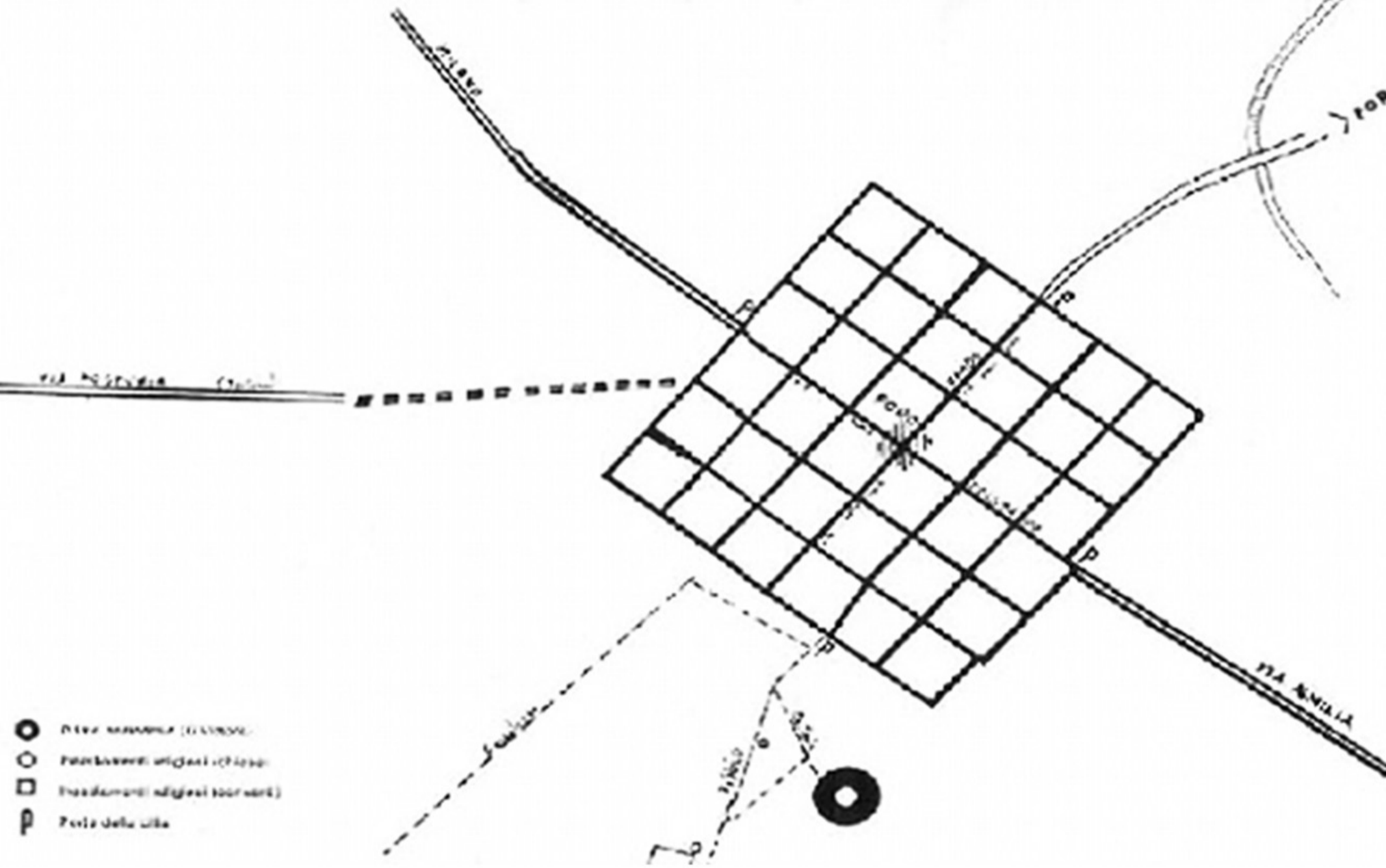
Students: Somayeh Khaef - Hedieh Sadat Miri 781875-784357



Beyond History

PIACENZA NEL 218 a. C.

Piacenza nel 218 a.C. (1700x1200x16M III)



The city of Piacenza was founded in 218 before christ and it was the first roman colony in the northern part of italy. Therefore it is easy to found out roman urban concept constituted by *Cardo* and *Decumano* and by the square pattern of the street intersection.

later on, the central area spreaded during a flourishing period of wealth and developement around 1000AC becoming an important comercial settlement located on the francigena route, that has always bound its riches to Milan. that is when the city was provided by its first boundary walls that protected the urban expansion.



POLITECNICO DI MILANO

“Architecture in multi-scale project”

Architecture and Society School- Campus Piacenza

Supervisor : Prof. Roberto Spagnolo

Students: Somayeh Khaef - Hedieh Sadat Miri 781875-784357

Inhabited Wall

Piacenza Landmarks



POLITECNICO DI MILANO

“Architecture in multi-scale project”

Architecture and Society School- Campus Piacenza

Supervisor : Prof. Roberto Spagnolo

Students: Somayeh Khaef - Hedieh Sadat Miri 781875-784357

Inhabited Wall

Through Continuity



POLITECNICO DI MILANO

“Architecture in multi-scale project”

Architecture and Society School- Campus Piacenza

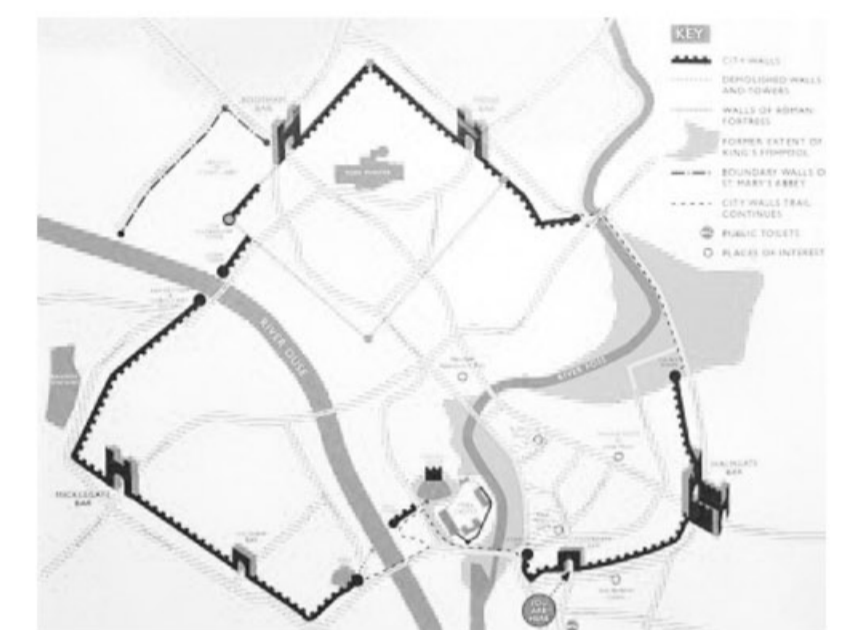
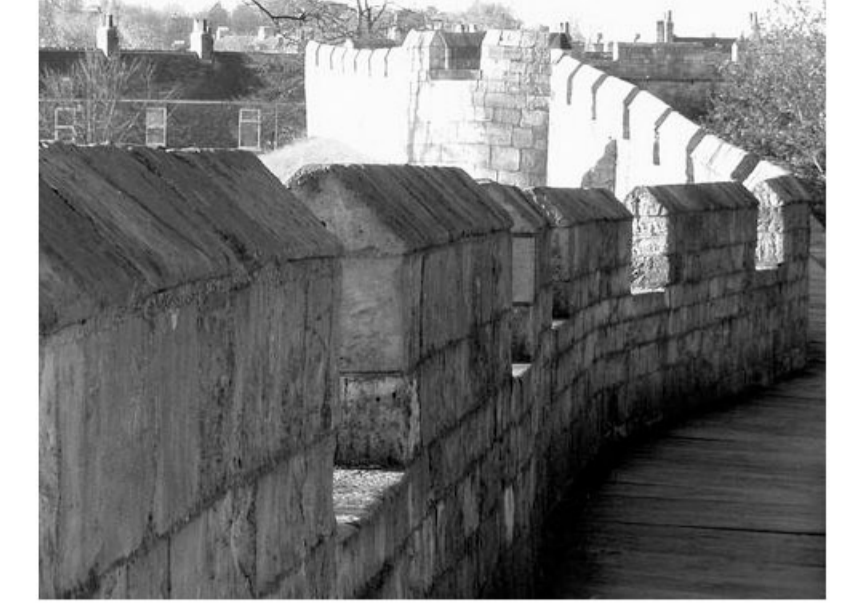
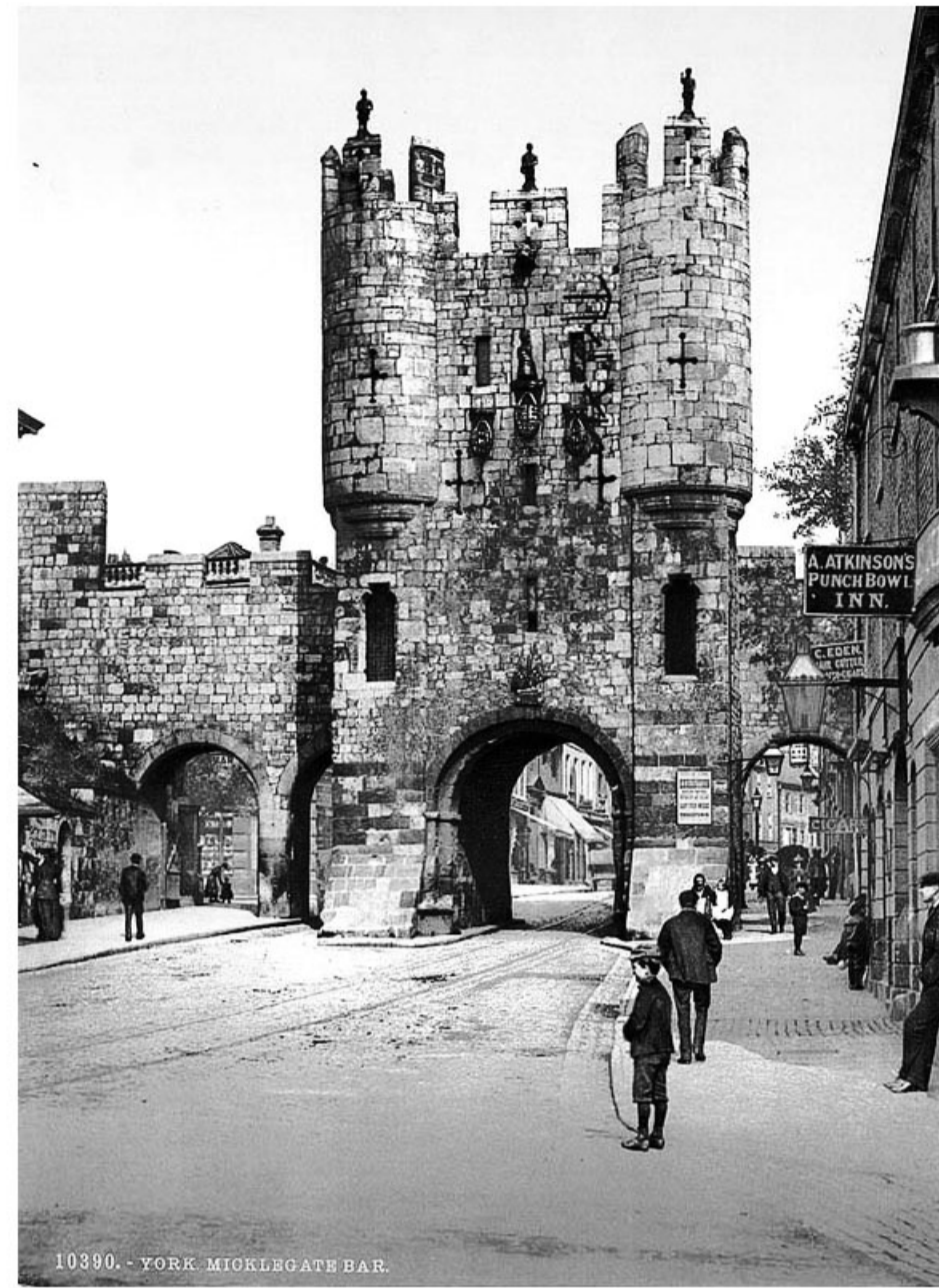
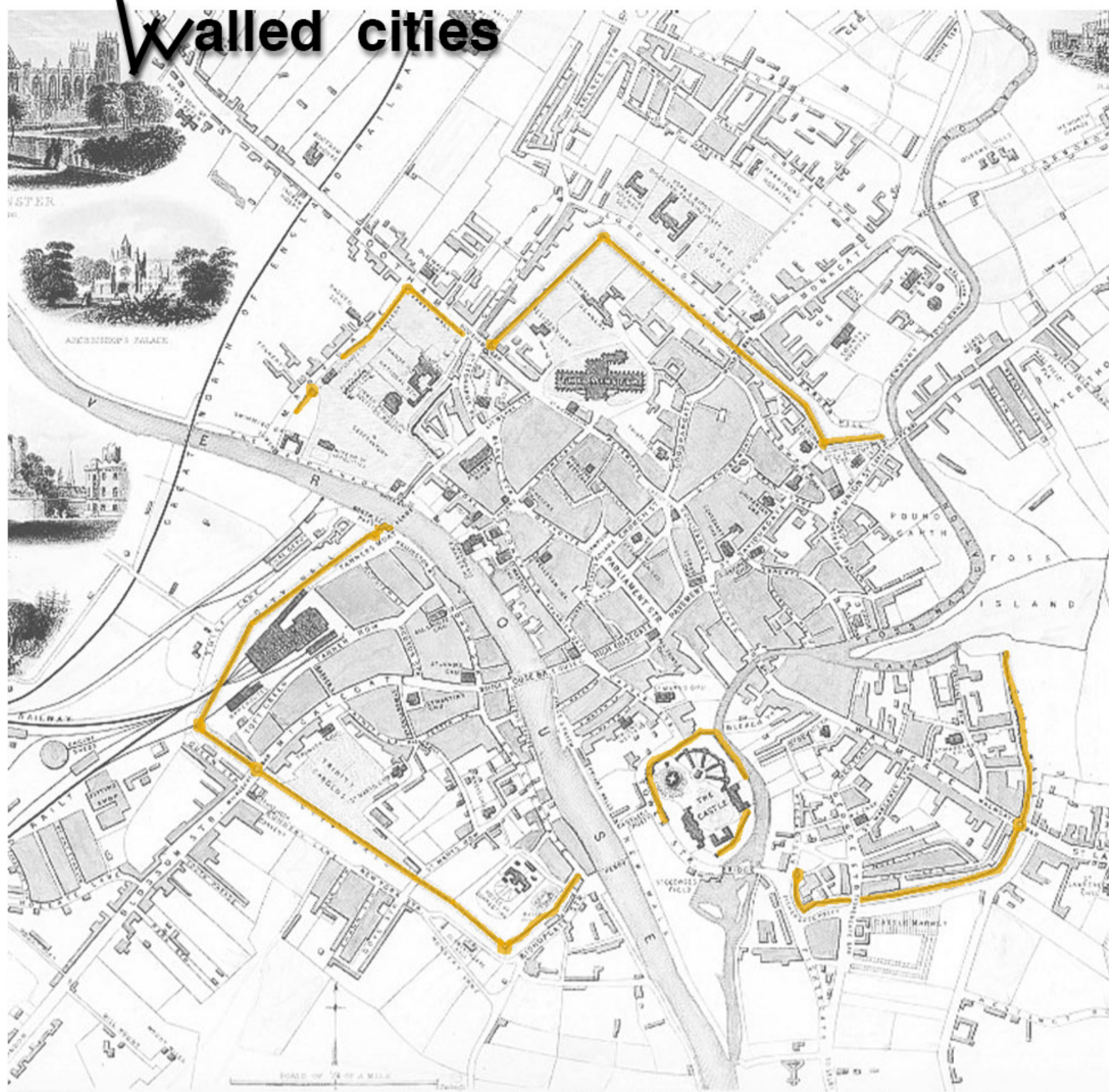
Supervisor : Prof. Roberto Spagnolo

Students: Somayeh Khaef - Hedieh Sadat Miri 781875-784357



Inhabited Wall

Walled cities



York is most recognised for are the City Walls guarding the perimeter of the once much smaller city.

Stretching 2.75 miles (including the gaps) the wall encircles an area of 263 acres, that's over 130 football pitches. Retaining all four bar (gates) into the City the York Walls are the most complete example of Medieval walls in **England**.

This map located near Fishergate Bar shows the original Roman walls, where Multangular Tower was the most westerly point and the later extended walls covering a much larger city.



The original walls were built around 71 AD, when the Romans erected a fort (castra) occupying about 50 acres or 21.5 hectares near the banks of the River Ouse. The rectangle of walls was built as part of the fort's defences.



POLITECNICO DI MILANO

“Architecture in multi-scale project”

Architecture and Society School- Campus Piacenza

Supervisor : Prof. Roberto Spagnolo

Students: Somayeh Khaef - Hedieh Sadat Miri 781875-784357



Inhabited Wall

Walled cities



Symble of religion



Symble of Economy



Symble of political division



Symble of Religion division



POLITECNICO DI MILANO

“Architecture in multi-scale project”

Architecture and Society School- Campus Piacenza

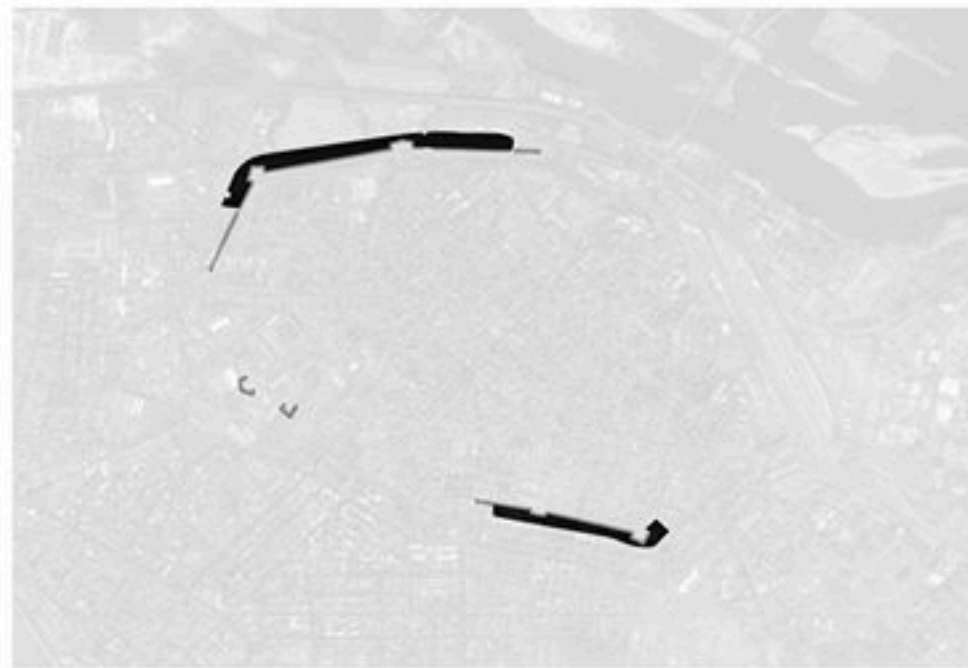
Supervisor : Prof. Roberto Spagnolo

Students: Somayeh Khaef - Hedieh Sadat Miri 781875-784357



Inhabited Wall

Piacenza Wall



The visible walls and their characteristic bastioni, today in ruins, were required by Pope Clemente VII de' Medici. Indeed, after his demand, in the year 1525 the operations of fortification and technological restoration of the medieval walls is done and it has been considered inadequate to defend the city

Origin of the element wall

In the symbolic view, the wall represents physical and spiritual protection. In order to fully realize the relationships engaged between the city of Piacenza and its surrounding walls, I believe that understanding the true meaning of the wall as an archetype and in what way the now leading perception of wall differs from the original one, is fundamental.



POLITECNICO DI MILANO

"Architecture in multi-scale project"

Architecture and Society School- Campus Piacenza

Supervisor : Prof. Roberto Spagnolo

Students: Somayeh Khaef - Hedieh Sadat Miri 781875-784357

Inhabited Wall

