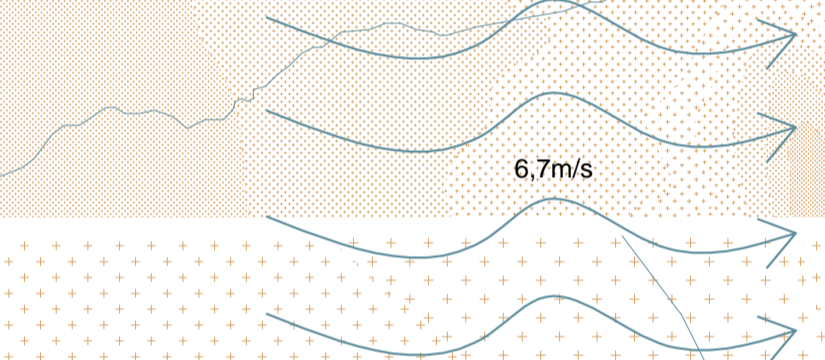


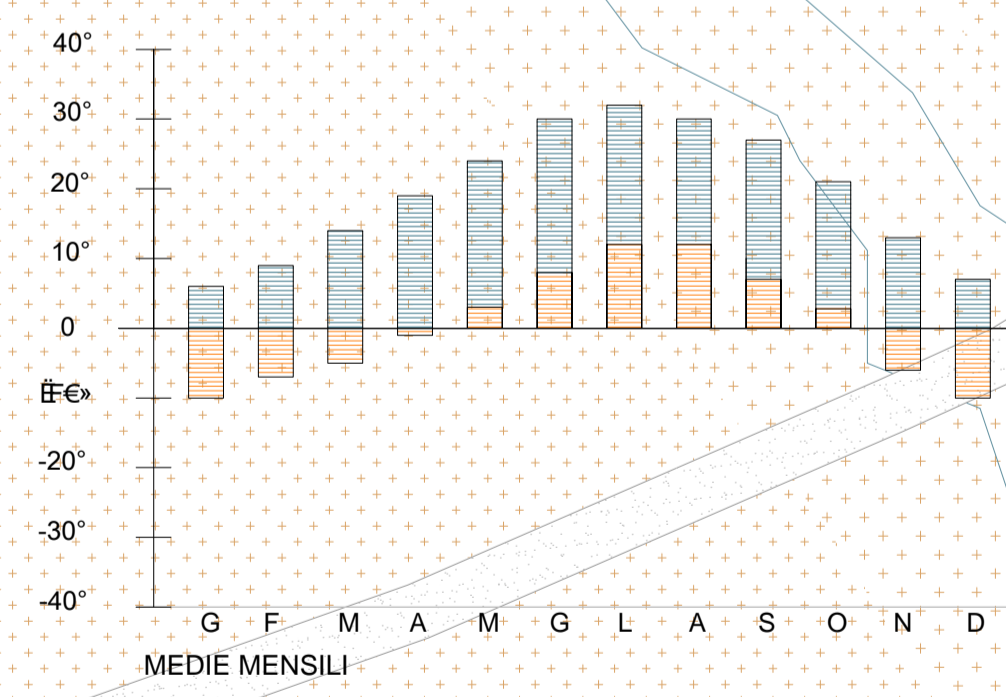
ANASAZI

NAVAJO

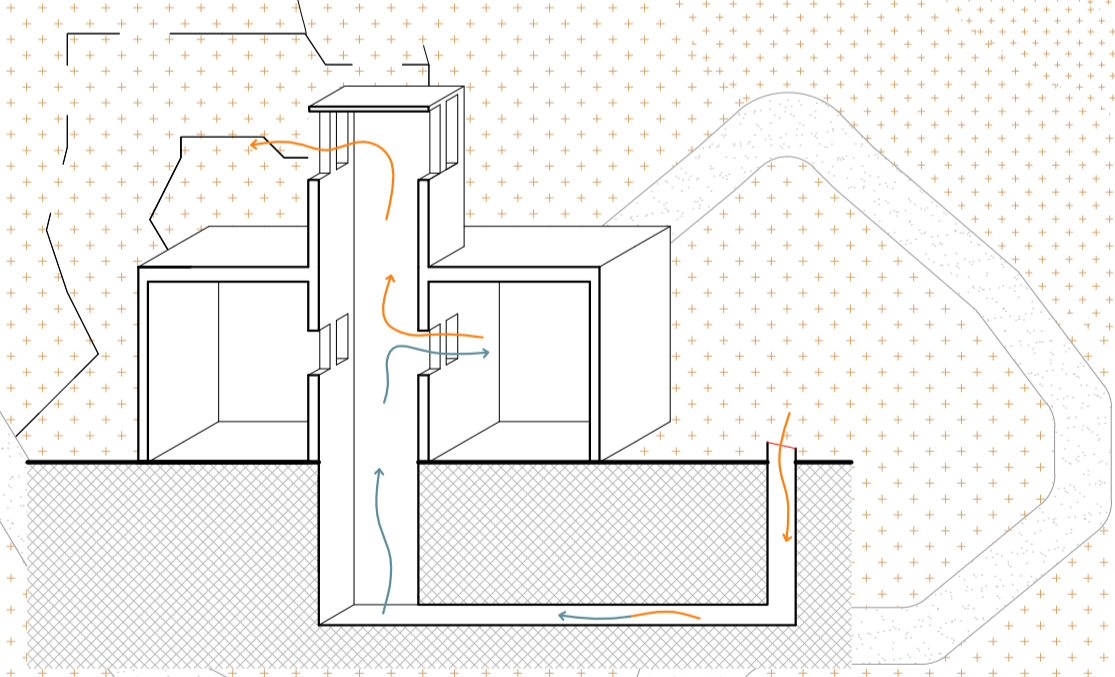
ATTO FONDATIVO



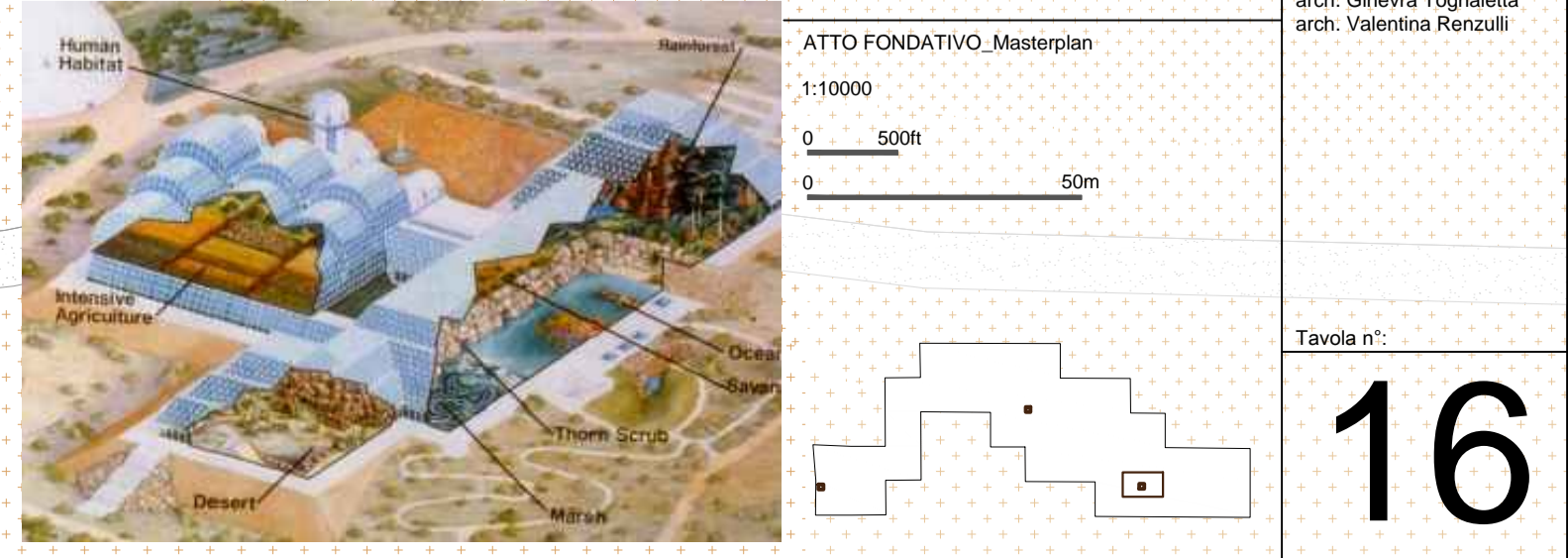
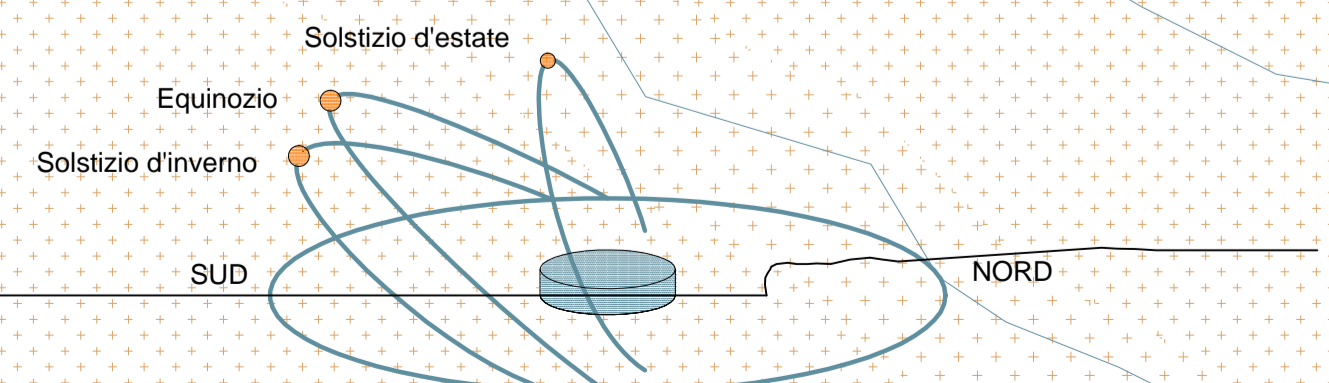
VELOCITA' DEL VENTO



TEMPERATURE



STUDIO CLIMATICO



Politecnico di Milano  
Scuola di Architettura e Società  
Anno Accademico 2013-2014  
Valorizzazione del Chaco Culture National  
Historical Park  
musealizzazione dei siti archeologici Pueblo del  
Arroyo e Kin Klizhin e progetto di un centro per le  
attività turistiche  
Relatore:  
prof. Pier Federico Callari  
Correlatori:  
arch. Francesco Leoni  
arch. Sara Ghislandini  
arch. Paolo Carloni  
arch. Ginevra Tognolaletta  
arch. Valentina Renzulli