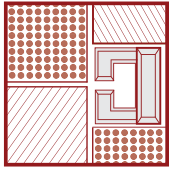


5.1 CASE STUDIES

PARK HA-SHARON LANDSCAPE RECOVERING IN TEL AVIV, ISRAEL

5.1.3- AGRICULTURAL RECOVERING PARK- Case Study N.2



Model Description:

Concept- **Landfill Recovering** plus **Enviromental Education**
 Economical Base- **Alliance between Municipality and Private Agriculture School**
 Enviromental Aspects- **Waste Recycling, Landscape recovering, Education**

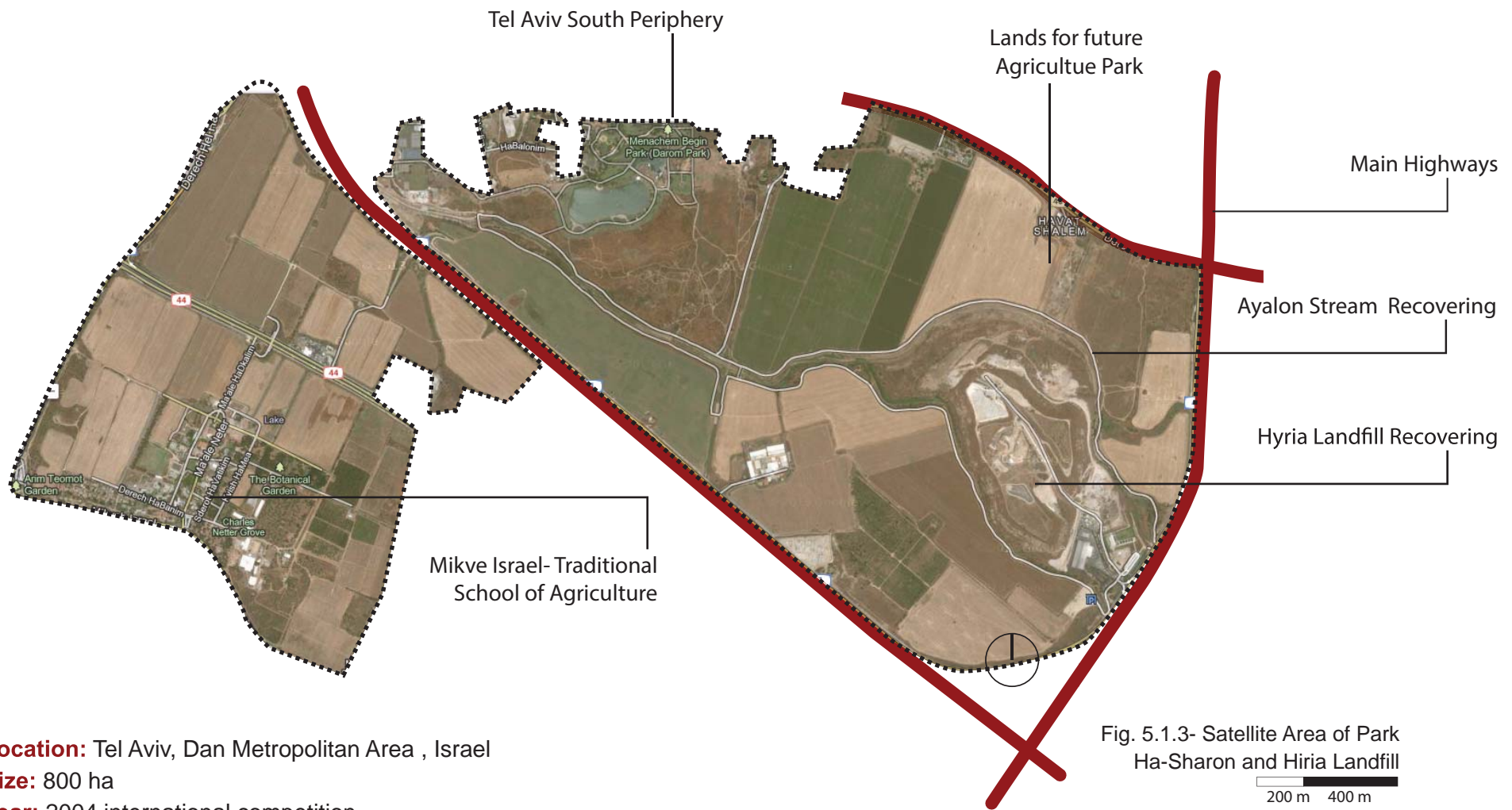


Fig. 5.1.3- Satellite Area of Park Ha-Sharon and Hiria Landfill

Location: Tel Aviv, Dan Metropolitan Area , Israel

Size: 800 ha

Year: 2004 international competition

Land property:

Private Agriculture Shool “Mikveh Israel” and Government agreement: between Mikveh Israel and Dan Metropolitan Area -taxes reduction and historical building reconstruction on an exchange of providing access to agriculture fields between Mikveh Israel and Municipality of Tel Aviv.

Waste management: Dan Region Association of Towns Sanitation and Solid Waste Disposal board

Maintenance: A recycling facility operated by the Israeli company ArrowEcology

Profits: the plant generates all the electricity required by the Hiria site and sells the excess to the Israel Electric Corporation

Enviromental benefits:

Educational sites, waste recycling activities, wetlands water cleaning areas

Social accomplishments:

Provides open space and recreation for all Dan Metropolitan Area. Additional work places, internship and volunteer opportunities

Brief History- Mount Hiriya Rehabilitation

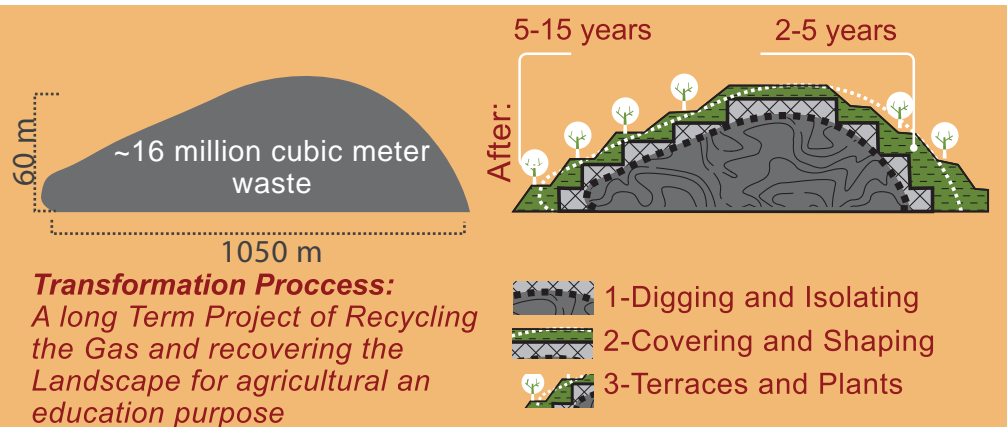
The Hiriya site received waste and worked as a landfill from 1952 to 1999. Over time, the size of the mountain reached 450,000m², a height of 60m, and a volume of 16 million cubic meters of waste. By 1998, Hiriya was receiving 3,000 tons of household waste per day, and in 1999, as part of a process being undertaken by the Ministry of Environmental Protection, the decision was made to stop dumping waste on the mountain and turn Hiriya into a transfer station.

In 2001, the Dan Municipal Sanitation Association began the process of rehabilitating the mountain, with the intention of turning it into a green and flourishing park that would lead environmental change worldwide. In an international architectural competition to choose landscape architects for the rehabilitation of the mountain, Prof. Peter Latz was selected from 14 applicants from Israel and abroad – an architect with huge experience of projects of this scale around the world.

The rehabilitation of Mount Hiriya is only the first step of the construction of Ariel Sharon Park, the largest "green lung" of the Dan Metropolitan Area, which you will be able admire from various observation posts on the mountain.



Fig. 5.1.4- Pictures of Agricultural Park Ha-Sharon and Hiria Landfill

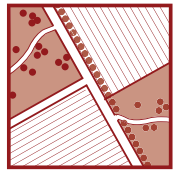


Transformation Process:
 A long Term Project of Recycling the Gas and recovering the Landscape for agricultural an education purpose

Fig. 5.1.5- Hiria Landfill Recovering, based on Peter Latz Project, Tel Aviv, 2004

WATER TEMPLE- AGRICULTURE PARK IN SUNOL, CALIFORNIA, US

5.1.4- AGRICULTURAL HERITAGE PARK- Case Study N.3



Model Description:

Concept- **Historical Preservation, Traditional Landscape, Recreation Place**

Economical Base- **Rent, Commerce**

Environmental Aspects- **Education, Green Planting Activities**

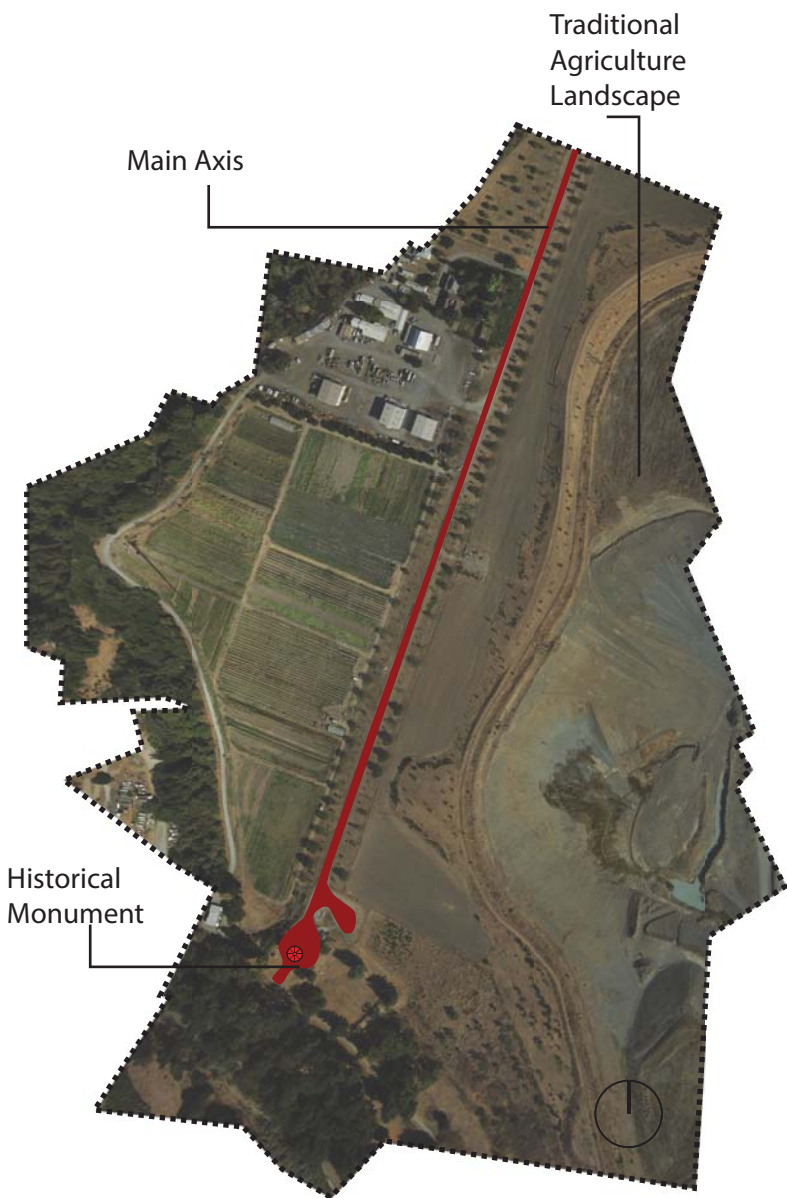


Fig. 5.1.6- Satellite Area of Sunol Water Temple Park

location: the East Coast of San Francisco Bay, California, US

size: ~7.5 ha

year: 2006

land property:

San Francisco Public Utilities Commission

management:

The land is leased by the non-profit group, Sustainable Agriculture Education (SAGE), for nine years

maintenance:

Six farmer tenants work rented plots in the park and sell their produce at farmers' markets, produce stands, to restaurants and through CSA (Community Supported Agriculture). Tenants share infrastructure, get training in organic agriculture practices and pay rent and water costs.

environmental benefits:

Protects habitat for pollinators and other native species. Preserves water quality

social accomplishments:

Field trip destination for 2,000 students annually.

Provides open space, recreation, job training, internship and volunteer opportunities for nearby communities

Brief History

The Sunol Water Temple AgPark, created in 2006 through an historic partnership between San Francisco Public Utilities Commission (SFPUC) and SAGE, fosters sustainable farming and public education programs while protecting natural resources in the Alameda Creek watershed. The AgPark is located in the beautiful Sunol Valley at the confluence of two wild creeks, on 18 acres of prime farmland that SAGE leases from SFPUC. The AgPark is adjacent to the 100-year-old Sunol Water Temple.

Today, the AgPark is a thriving urban-edge farm, home to four small-scale organic farming enterprises that produce delicious, fresh food for diverse Bay Area communities. SAGE provides technical and marketing assistance for farmers and has established an irrigation system, fencing, and farm roads on AgPark land.

Through the continuing support of the SFPUC, the AgPark also provides hands-on environmental education for schoolchildren, service learning and job training for youth, and volunteer and natural resource stewardship opportunities for community members. SAGE is collaborating with SFPUC on the development of the Alameda Creek Watershed Center – a permanent environmental education center being built at the AgPark and the Water



Fig. 5.1.7- Pictures of Sunol Agricultural Park

5.2 BIBLIOGRAPHY

LIST OF BOOKS AND WEBSITES FOR EACH CHAPTER

01-Introduction

Angela Colucci, Il paesaggio rurale: dinamiche e difficili definizioni, article published by Regione Lombardia, 2009

Associazione Per Il Parco Sud Milano, [Http://Www.Assparcosud.Org/14-Istituzioni/478-Barona,-Serra-Solidale.html](http://www.assparcosud.org/14-Istituzioni/478-Barona,-Serra-Solidale.html)

Chiappa Mauri, Luisa, Paesaggi Rurali Di Lombardia, Bari-Roma, Laterza 1990, Pp. 132-162

Database of Comune di Milano. Retrieved from <http://dati.comune.milano.it/>

Milan South Agricultural Park Nature, Flavours And Traditions [Http://Www.Visitamilano.it/Turismo_En/Da_Non_Perdere/Parco_Agricolo_Sud.html](http://www.visitamilano.it/Turismo_En/Da_Non_Perdere/Parco_Agricolo_Sud.html)

Stefano Boeri e Salvatore Porcaro, Le Cascine Di Milano Verso E Oltre Expo 2015, Multiplicity.Lab, Comune Di Milano , 2009

Reggiori, Ferdinando, Milano 1800-1943, Milano, Milione 1947, Pp. 480-85

Parco Agricolo Sud Milano, Programmes and History <http://www.fondoambiente.it/Cosa-facciamo/Index.aspx?q=parco-agricolo-sud-milano-e-parco-del-ticino-lombardia-sos-paesaggio>

Provincia Di Milano- Parco Agricolo Sud - Dai Parchi Alla Rete Ecologica, [http://Www.Provincia.Mi.It/Parcosud/Index.jsp](http://www.provincia.mi.it/Parcosud/Index.jsp)

Piano di governo del territorio, Comune di Milano. (2013). (PGT), Retrieved from <http://www.comune.>

Regione Lombardia, Il sistema agricolo territoriale delle aree periurbane di pianura irrigua http://www.cialombardia.org/documenti/agricoltura_periurbana/sistema-agricolo_periurbane_pianura.pdf

Zimolo, Giulio Cesare, Canali E Navigazione Interna Dalle Origini Al 1500, In Storia Di Milano, Milano, Treccani Degli Alfieri 1957, Vol. Viii, Parte Xv

02-Method

Audis- Assicurazioni Delle Aree Urbane Dismesse- Il Pgt Di Milano Per Il Parco Sud Verso La Commissione Comunale, [Http://Www.Audis.It/Index.html?Pg=10&Sub=15&Id=301&Y=2012](http://www.audis.it/Index.html?Pg=10&Sub=15&Id=301&Y=2012)

Andre Viljoen, Katrin Bohn, Joe Howe , Continuous productive urban landscapes : designing urban agriculture for sustainable cities - Oxford : Architectural press, 2005.

Bill Finlayson and Graeme Warren, Landscapes In Transition, Volume 8, 2010

D. W. Meinig, editor ; J. B. Jackson . The Interpretation of ordinary landscapes : geographical essays / New York ; Oxford : Oxford University Press, 1979.

James Corner editor, Recovering landscape : essays in contemporary landscape architecture , New York : Princeton architectural press, 1999.

Mark Gorgolewski, June Komisar, and Joe Nasr, Carrot city : creating places for urban agriculture - New York : Monacelli Press, 2011.

Mark Redwood, Agriculture in urban planning : generating livelihoods and food security /. - London ; Sterling : Earthscan, 2009

Mohsen Mostafavi with Gareth Doherty, Ecological urbanism. - Harvard : Harvard University Graduate school of design ; Baden : L. Muller, 2010.

Paul Groth and Todd W. Bressi. Understanding Ordinary Landscapes ; -New Haven ; London : Yale University Press, 1997

Stijn Oosterlynck, Jef Van Den Broeck, Louis Albrechts, Frank Moulaert, Ann Verhetsel

Sustainable Cities Institute At The National League Of Cities [Http://Www.Sustainablecitiesinstitute.Org/](http://www.sustainablecitiesinstitute.org/)

Taylor & Francis, Strategic Spatial Projects: Catalysts For Change, Nov 18, 2010

03-Analysis

City Edge:

Piano Territoriale Di Coordinamento Del Parco Agricolo Sud Milano, [Http://Www.Provincia.Mi.It/Parcosud/Ptc/](http://www.provincia.mi.it/Parcosud/Ptc/)

Piano del Paesaggio, http://www.provincia.milano.it/pianificazione_territoriale/paesaggio_ambiente/paesaggio/

Ptr-Piano Territoriale Regionale-Piano Paesaggistico, Published Bu Regione Lombardia [Http://Webbox.Lispa.It/Ptr-2/Volumi/Pdf/Volume3/Volume%201_Relazione/3ptr_Ppr_Relazione.Pdf](http://webbox.lispa.it/Ptr-2/Volumi/Pdf/Volume3/Volume%201_Relazione/3ptr_Ppr_Relazione.Pdf)

Sage: Sustainable Agriculture Education, Urban Edge , Agricultural Parks Feasibility Study Final Report Phase 1: January 2005, <http://www.sagecenter.org/wp-content/uploads/2013/05/2005-01-14-Urban-Edge-AgParks-Feasibility-Study.pdf>

Physical Barriers:

Database of cartography for Lombardy Region. Retrieved from <http://www.cartografia.regione.lombardia.it/geoportale>

Giovanna Fossa, Un *atlante per Milano : riqualificare i contesti urbani di nodi infrastrutturali , Milano, 2006 An atlas for Milan : renewing the urban contexts of infrastructure nodes.

Italian National Institute of Statistics (ISTAT). Retrieved from <http://www.istat.it/en>

Water Frame:

Baselli, Giuseppe, Il Collegamento Per Via Acqua Di Milano, In "Milano. Rivista Mensile Del Comune", 1939

Baselli, Giuseppe, La Navigazione Fra La Città Di Milano Ed Il Mare E Tra Milano E Il Lago Maggiore, In "Milano. Rivista Mensile Del Comune", Milano, 1940

Bignami, Emilio, Zanetti, I Canali Nella Città Di Milano, Milano, 1868

Bignami, Emilio, Milano Idrografica, In Mediolanum, Milano, Vallardi 1881

Biscaro, Gerolamo, Gli Antichi Navigli Milanese, In "Archivio Storico Lombardo", 1908, P. 318

Bisi, L., Rizzi, C., Vecchio, L., Il Sistema Dei Navigli A Milano, Milano, Facoltà Di Architettura 1986/87

Chiappa Mauri, Luisa, I Mulini Ad Acqua Del Milanese (Secolo X-Xv), Roma Soc. Ed. Dante Alighieri, 1984

Depuratore Nosedo - La Storia [Http://Www.Depuratorenosedo.Eu/It/Storia](http://www.depuratorenosedo.eu/it/Storia)

Franco Sangiorgi e F. Angeli, Classificazione delle cascine del Parco agricolo Sud Milano, Milano , 2000.

Jan Feyen, Kelly Shannon & Matthew Neville, Water and urban development paradigms : towards an integration of engineering, design and management approaches : proceedings of the International urban water conference, Heverlee, Belgium, september, 2008

Paolo Colussi, La Storia Del Milano- Milano Città Acquatica E Il Suo Porto Di Mare [Http://Www.Storiadimilano.It/Miti_E_Leggende/Acque.Htm](http://www.storiadimilano.it/Miti_E_Leggende/Acque.htm)

Pietro Lembi, Il *fiume sommerso : Milano, le acque, gli abitanti, Milano : Jaca book, 2006.

Policy Limits:

Andreas Kipar, Manuale per la pianificazione e costruzione dei Raggi Verdi, Land Studio e Comune di Milano, 30 dicembre 2008

G.Crainz: Padania, Il Bene Strategico Del Parco Sud Milano, La Repubblica 09/02/2013

Groundwork Bridgeport-Changing Places Changing Life, Urban Agriculture [Http://Groundworkbridgeport.Org/Programs/Urban-Agriculture/](http://groundworkbridgeport.org/Programs/Urban-Agriculture/)

EPA- United States Environmental Protection Agency, Urban Agriculture & Improving Local, Sustainable Food Systems [Http://Epa.Gov/Brown-fields/Urbanag/](http://Epa.Gov/Brown-fields/Urbanag/)

FAO- Food And Agricultural Organizations Of The United States, Urban And Peri-Urban Agriculture-Report Of International Condition Of Urban Agriculture, Us 2008 <http://www.fao.org/unfao/bodies/coag/coag-15/X0076e.htm>

Kristin A. Reynolds, Expanding Technical Assistance For Urban Agriculture: Best Practices For Extension Services In California And Beyond <http://dx.doi.org/10.5304/jafscd.2011.013.013>, Pp. 197–216

University Of Missouri Extensions- Search City Policies And Resources - Food Systems- Urban Agriculture <http://extension.missouri.edu/foodsystems/policysearch.aspx>; <http://extension.missouri.edu/foodsystems/urbanagriculture.aspx>

04-Conclusions

Urban Farming Ideas:

Andre Viljoen (Ed.), Continuous Productive Urban Landscapes: Designing Urban Agriculture For Sustainable Cities (Oxford: Architectural Press, 2005).

Katrin Bohn And Andre Viljoen, 'Everything Is Continuous', In Actions: What You Can Do With The City (Montreal: Cca Publications, Sun Amsterdam, 2008).

LUA-Agricultural Urbanism Lab - Urban Agriculture Projects <http://www.lua-paris.com/en/projects/urban-agriculture>

Mindy Goldstein, Urban Agriculture A Sixteen City Survey Of Urban Agriculture Practices Across The Country, 2011 <http://georgiaorganics.org/wp-content/themes/georgiaorganics/downloads/sitemoveover/urbanagreport.pdf>

Mudchute, Park And Farm, <http://www.mudchute.org/> [Accessed 24 May 2010].

Transition Network, <http://www.transitionnetwork.org/> [Accessed 24 May 2010].

Scott Chaplowe, Havana's Popular Gardens: Sustainable Urban Agriculture, City Farmer, <http://www.cityfarmer.org/cuba.html> [Accessed 24 May 2010].

William Wiles, Urban Farming Icon, 2009, http://www.lconeye.com/index.php?option=com_content&view=article&id=4040:urban-farming.

What Is Urban Agriculture?, Resource Centres On Urban Agriculture And Food Security, <http://www.ruaf.org/node/512> [Accessed 24 May 2010].

Illegal Gardening - Demands and Solutions:

A. Peprav (Eds.), Urbanact, Montrouge, 2007

Constantin Petcou And Doina Petrescu, Au Rez De Chausee De La Ville, Multitudes, 2005, <http://multitudes.samizdat.net/multitudes-20-spring-2005.html>.

Diana Balmori And Rosalind Creasy, Edible Estates: Attack On The Front Lawn: A Project By Fritz Haeg. Illustrated Edition, 2008

Doina Petrescu, How To Make A Community As Well As The Space For It, Re-Public: Reimagining Democracy, 2007, <http://www.re-public.gr/en/?p=60> [Accessed 10 May 2010].

Peter Blundell Jones, Doina Petrescu And Jeremy Till (Eds.), Architecture And Participation, Abingdon: Spon Press, 2007

Peter Lamborn Wilson And Bill Weinberg, Eds., Avant Gardening: Ecological Struggle In The City & The World. Brooklyn, Ny: Autonomedia, 1999

Richard Reynolds, On Guerrilla Gardening: A Handbook For Gardening Without Boundaries. (London: Bloomsbury, 2008).

Tracey, David, Guerilla Gardening: A Manual, New Society Publishers, 2007

Plateforme Européenne De Recherche Et D'action Sur La Ville / European Platform For Research And Action On The City, www.peprav.net [Accessed 10 May 2010].

Ruth Morrow, Ecobox. Mobile Devices And Urban Tactics, Domus, (2007): 50-53.

Self Management Public Spaces:

Atelier Bow-Wow, Bow Wow From Post City Bubble (Tokyo: Inax, 2006).

Momoyo Kaijima, Junzo Momoyo And Yoshiharu Tsukamoto, Made In Tokyo, Tokyo: Kajima Institute, 2001.

Momoyo Kaijima, Jeffrey Inaba And Benedict Clouette, Micro-Scales And Macro Ambitions: Momoyo Kaijima Interviewed, Volume, 2007

Ideas for Policies and Strategies:

Paul Sommers And Jac Smit, Promoting Urban Agriculture: A Strategy For Planners In North America, Europe, And Asia, Report, 1994, Canada <http://community-wealth.org/content/promoting-urban-agriculture-strategy-planners-north-america-europe-and-asia>

Journal Of Agriculture, Food Systems, And Community Development Inaugural Issue, Published Online At www.agdevjournal.com New Leaf Associates, Inc. Issn 2152-0801 (Online) / Issn 2152-0798 (Print), Special Topic: Growing New Farmer Volume 1, Issue 1 / August 2010

Sustainability Issues:

Periurban - Peri-Urban Areas Facing Sustainability Challenges: Scenario Development In The Metropolitan Area Of Lisbon <http://www.issa.utl.pt/ceabn/projecto/2/72/periurban-peri-urban-areas-facing-sustainability-challenges-scenario-development-in-the-metropolitan-area-of-lisbon>

Produced By: SAGE: Sustainable Agriculture Education, Urban Edge Agricultural Parks Toolkit, Report, December 2005 <http://www.sagecenter.org/wp-content/uploads/2009/07/toolkit-121405.pdf>

05-References

Urban Agriculture:

Mary K. Hendrickson And Mark Porth, Urban Agriculture — Best Practices And Possibilities Division Of Applied Social Sciences, University Of Missouri Extension, June 2012 [http://www.northcentral-sare.org/about-us/regional-initiatives/scaling-up-local-food/scaling-up-local-foods-reports/\(id\)/67934/\(tag\)/urban%20agriculture](http://www.northcentral-sare.org/about-us/regional-initiatives/scaling-up-local-food/scaling-up-local-foods-reports/(id)/67934/(tag)/urban%20agriculture)

What Is Agriculture Park? <http://www.sacog.org/rucs/newsletters/2009/04/text/what-is-an-agricultural-park.html>

Milan Kitchen Gardens:

Anna Mangiarotti, La Primavera Degli Orti Risorti -Rinascere Sotto I Grattacieli La Tradizione Dei Verzieri Milanesi, Spettacoli Il Giorno Sabato 28 Marzo 2009

Daniel Tarozzi, Orti Urbani A Milano, 23 Aprile 2009, <http://www.terranauta.it/stampa>

Coltivami, project of Comune Di Milano, <http://www.comune.milano.it/d-seserver/webcity/garecontratti.nsf/weball/3223f84e1285a2b2c1257b670051ed0c?opendocument>

Francesca Tozzi, Milano Si Prepara Ad Accogliere Nuovi Orti Urbani, Wise Society, 18 Maggio 2013 <http://wisesociety.it/piaceri-e-societa/milano-si-prepara-ad-accogliere-nuovi-orti-urbani/>

Serena Coppetti, I Milanesi Fanno La Coda Per L'orto In Affitto, Martedì 1 maggio 2012 Ilgiornale

Tomaso Colombo, Orti Borromeo, Lunedì 25 Giugno 2007 <http://www.parconord.milano.it/spazi-e-attrezzature/170/2545-orti-borromeo>

Sunol AgroPark:

The Sunol Water Temple Agpark <http://www.sagecenter.org/sunol-agpark/> <http://www.sagecenter.org/wp-content/uploads/2013/05/2005-01-14-urban-edge-agparks-feasibility-study.pdf>

The Sunol Park Territory <http://publiclab.org/map/ag-park-sunol-california/2011-09-24>

Hiriya recycling park -(Park Ha-Sharon):

Hiriya Center For Environmental Education <http://hiriya.co.il/Len/A-page/75707.php>

5.3 FIGURES LIST

01-Introduction

- Fig. 1.1.1- General Map of Parco Agricolo Sud. Based on the maps of Provincia di Milano
- Fig. 1.1.2- Evolution of Milan Expansion (1936-2007) Based on the historical maps of Provincia di Milano
- Fig.1.1.3- Map Of Open Space Sequence. Based on the map: "Regional Protected Areas" by Centro Studi PIM, marzo 2011
- Fig. 1.2.1- Comparison Open Space Use Among Different Actors
- Fig. 1.2.2- Demands Contradiction Scheme
- Fig. 1.2.3- Problems of Size Scheme
- Fig. 1.3.1- General Map of Location - Build vs. Open
- Fig. 1.3.2- General Landscape Map
- Fig. 1.3.3- Satellite of Selected Area
- Fig. 1.3.4- The Landscape Features
- Fig. 1.3.5- Diagram of Landscape Content
- Fig. 1.3.6- Landscape of Pluralities- Four Traditional Landscapes
- Fig. 1.3.7- Layout of Build Area vs. Open Space
- Fig. 1.3.8- Layout of Water Structure and Historical Monuments
- Fig. 1.3.9- Layout of Public Open Space
- Fig. 1.3.10- Layout of Agriculture Landscape

02-Method

- Fig. 2.1.1- General Map of Location -Build vs. Open
- Fig. 2.1.2- Scheme of Fragmentation Processes in the Selected Area
- Fig. 2.1.3- Satellite of Selected Area with Focus on Fragmented Lands
- Fig. 2.1.4- Types of Neglected Open Spaces
- Fig. 2.1.5- Diagram of Fragmentation Appearance within the Selected Areas
- Fig. 2.1.6- Characteristics of Leftovers Areas
- Fig. 2.1.7- Characteristics of Detached Lands
- Fig.2.1.8- Characteristics of Ignored Landscapes
- Fig. 2.1.9- Characteristics of "Not in My Yard" Policies
- Fig. 2.2.1- General Map of Location
- Fig. 2.2.2- Overlapping of Territorial Fragmentation Processes
- Fig. 2.2.3- Profile of City Edge
- Fig. 2.2.4- Profile of Physical Barriers
- Fig. 2.2.5- Profile of Water Frame
- Fig. 2.2.6- Profile of Policy Limits
- Fig. 2.2.7- Process of Work Scheme
- Fig. 2.3.1 The Map of City Edge
- Fig. 2.3.2- The Map of Water Frame
- Fig. 2.3.3 The Map of Physical Barriers
- Fig. 2.3.4 The Map of Policy Limits
- Fig. 2.3.5- When, Where, What and How

03-Analysis

- Fig. 3.1.1- General Map of Location
- Fig. 3.1.2- Map of Leftovers on the City Edge. Based on the map of P.T.C.- Piano territoriale di Coordinamento, provincia site
- Fig. 3.1.3- Total Amount of Neglected Leftovers Comparison
- Fig. 3.1.4- City Edge and Leftovers
- Fig. 3.1.5- Selected Area- Map of Leftovers
- Fig. 3.1.6- Satellite of Selected Area with the Particular Location of Leftovers
- Fig. 3.1.7- Leftovers Situations - The Land Conditions
- Fig. 3.1.8- Diagram of Leftovers Amount in the Selected Area
- Fig. 3.1.9- Particular Leftover Dimension in the Selected Area
- Fig. 3.2.2- Landscape Characteristics General Map

- Fig. 3.2.3- Pictures of Parco Agricolo Landscapes. Took from comune di Milano Site
- Fig. 3.2.4- City Edge and Leftovers
- Fig. 3.2.5- Selected Area- Leftovers Characteristics
- Fig. 3.2.6- Selected Area - The Landscape Characteristics
- Fig. 3.2.7- Leftovers Situations - The Landscape Characteristics
- Fig. 3.2.8- Diagram of Leftovers Content within the Selected Area
- Fig. 3.2.9- Pictures of Parco Agricolo Neglected Landscapes. Took from internet and site observation
- Fig. 3.3.1- General Map of Location
- Fig. 3.3.2- Map of Open Space Quality and Use
- Fig. 3.3.3- Allotments of Corvetto
- Fig. 3.3.4- City Edge and Allotments Location
- Fig. 3.3.5- Selected Area-Allotments Location
- Fig. 3.3.6- Selected Area - Open Space Qualities and Use
- Fig. 3.3.7- Open Space Qualities. Zoom in - Allotments Situations
- Fig. 3.3.8- Diagram of Landscape Qualities within the Selected Area
- Fig. 3.3.9- Diagrams of Allotments Features and their Users
- Fig. 3.4.1- Physical Barriers
- Fig. 3.4.2- Selected Area-Physical Barriers
- Fig. 3.4.3- Selected Area- Accessibility Levels
- Fig. 3.4.4- Selected Area- Roads Network
- Fig. 3.4.5- Selected Area- Public Transportation, focusing on the space for pedestrians
- Fig. 3.4.6-Schemes of road typology - Roads Network
- Fig. 3.4.7- Scheme of timing to get to the selected area
- Fig. 3.4.8- Perypheral Street Open Spaces
- Fig. 3.4.9- Indicators for Street Open Space Quality
- Fig. 3.5.1- City Scale- Water Network
- Fig. 3.5.2- Zoom out- Main Water Valleys
- Fig. 3.5.3- Selected Area - Water Network and Bicycle Paths
- Fig. 3.5.4- Examples of Water Situations and Way of Use
- Fig. 3.5.5- Large Scale Scheme of Water Corridors, Based on Ecological Map of Provincia di Milano Site
- Fig. 3.5.6- Water Frame- The Ignored Landscape
- Fig. 3.5.7- Selected Area- Canals Location
- Fig. 3.5.8- Examples of Canals as a Boundary Element
- Fig. 3.5.9- Scheme of Historical Water Network Based on Historical Map of 19th Century, take from Comune di Milano Site

04-Project and Conclusions

- Fig. 4.2.1 Agrofront Strategy
- Fig. 4.2.2 Water Routes Strategy
- Fig. 4.2.3 Interval Space Strategy
- Fig. 4.2.4 Intermedium Policies Strategy
- Fig. 4.2.5- Comparison between open space strategies
- Fig. 4.3.1- General Map of Location
- Fig. 4.3.2- Scheme of four environmental strategies (see chapter 4.2)
- Fig. 4.3.3- Selected Area- Leftovers Transformation to the Open Space Network
- Fig. 4.3.4- Concept Plan "Landscapes Interaction"
- Fig. 4.3.5-Zoom in to Concept Section
- Fig. 4.3.6- Zoom in- Concept Plan "Landscapes Interaction"
- Fig. 4.3.7- Zoom in- Landscape Strategies
- Fig. 4.3.8- The City edge Line - Current situation
- Fig. 4.3.9- Landscapes Interaction Conceptual Section A-A
- Fig. 4.4.1- Urban Section

Fig. 4.4.2- Peri-Urban Agriculture Section

Fig. 4.4.3- Natural Area Section

Fig. 4.4.4- Mix Landscapes Section

Fig. 4.4.5- Diagram of Open Space Functions within the Landscaping Type

Fig. 4.5.1- Catalogue of Landscape Strategies

Fig. 4.5.2- Enlarging the Opportunity Space

05-References

Fig. 5.1.3- Satellite Area of Park Ha-Sharon and Hiriya Landfill

Fig. 5.1.4- Pictures of Agricultural Park Ha-Sharon and Hiriya Landfill

Fig. 5.1.5- Hiriya Landfill Recovering, based on Peter Latz Project, Tel Aviv, 2004

Fig. 5.1.6- Satellite Area of Sunol Water Temple Park

Fig. 5.1.7- Pictures of Sunol Agricultural Park of Historical

All the Illustrations, diagrams, schemes and maps were designed and developed by the author, if not mentioned the other sources.