



ERGOTECNICA: FASI DI MONTAGGIO DEL MODULO DI FACCIATA

1_Reperimento del materiale di riempimento: pietre, mattoni, detriti.

2_Preparazione dei moduli. Il modulo arriva in cantiere già predisposto all'installazione e diviso in una componente principale più due parti per il suo completamento.

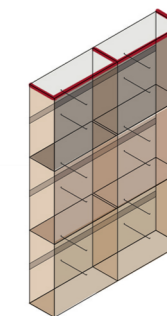
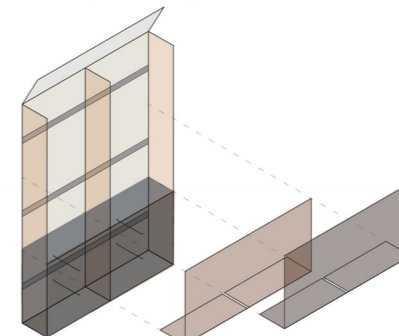
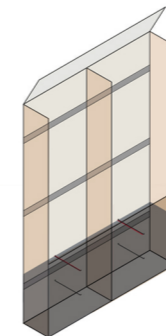
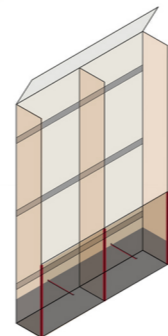
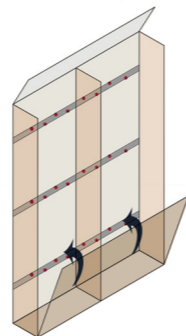
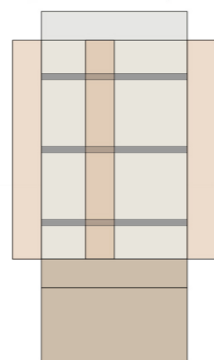
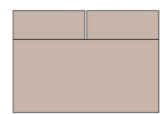
3_Fissaggio del modulo allo strato portante in cls tramite tasselli meccanici tipo fisher.

4_Chiusura primo pannello, riempimento fino a 1/3 e disposizione dei rinforzi.

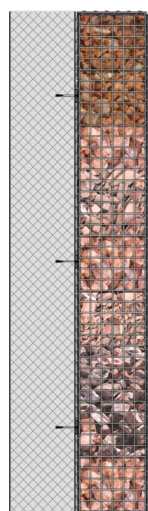
5_Riempimento fino a 2/3 e disposizione dei rinforzi.

6_Riempimento fino a 3/3. Ripetizione del procedimento per le due porzioni superiori.

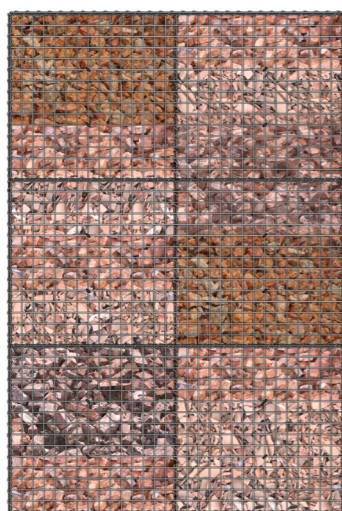
7_Completamento del modulo e chiusura con fissaggio ad elica di tutti gli spigoli.



Vista superiore



Vista laterale



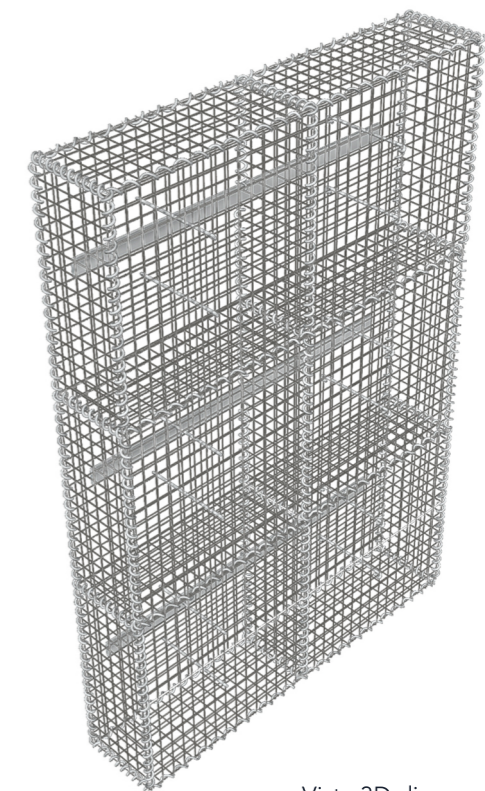
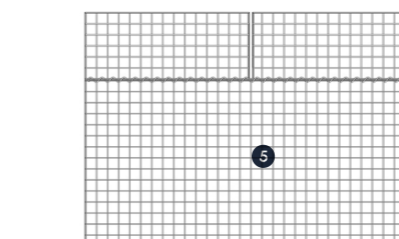
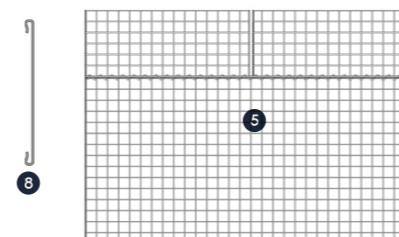
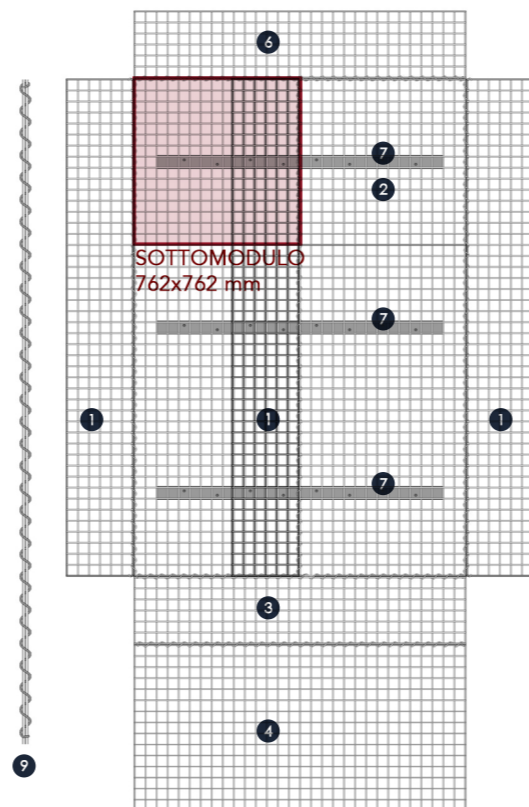
Vista frontale

Gabbione smontato e sue componenti

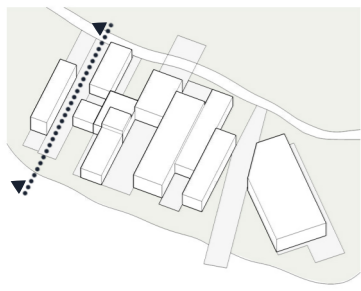
1. Pannello/diaframma verticale, 300x2286 mm
2. Pannello posteriore, 1524x2286 mm
3. Pannello di base, 1524x300 mm
4. Primo pannello frontale, 1524x762 mm
5. Pannello frontale, 1524x762 mm + coperchio 1524x300 mm forniti sciolti per montaggio in sito
6. Coperchio, 1524x300 mm
7. Piattino metallico per fissaggio allo strato portante tramite barre filettate resinare, 1320x60x10 mm
8. Rinforzo metallico da disporre a 1/3 e a 2/3 dell'altezza di un sottomodulo, tra il riempimento, \varnothing 5 mm
9. Giunto con avvolgimento elicoidale lungo la rete delle diverse porzioni di pannelli, \varnothing 4 mm

Dimensione della mesh della rete:
 - 50.8x50.8 mm (riempimento mattoni)
 - 76.2x76.2 mm (riempimento pietre)

Rete metallica \varnothing 5 mm in acciaio INOX



Vista 3D di un modulo



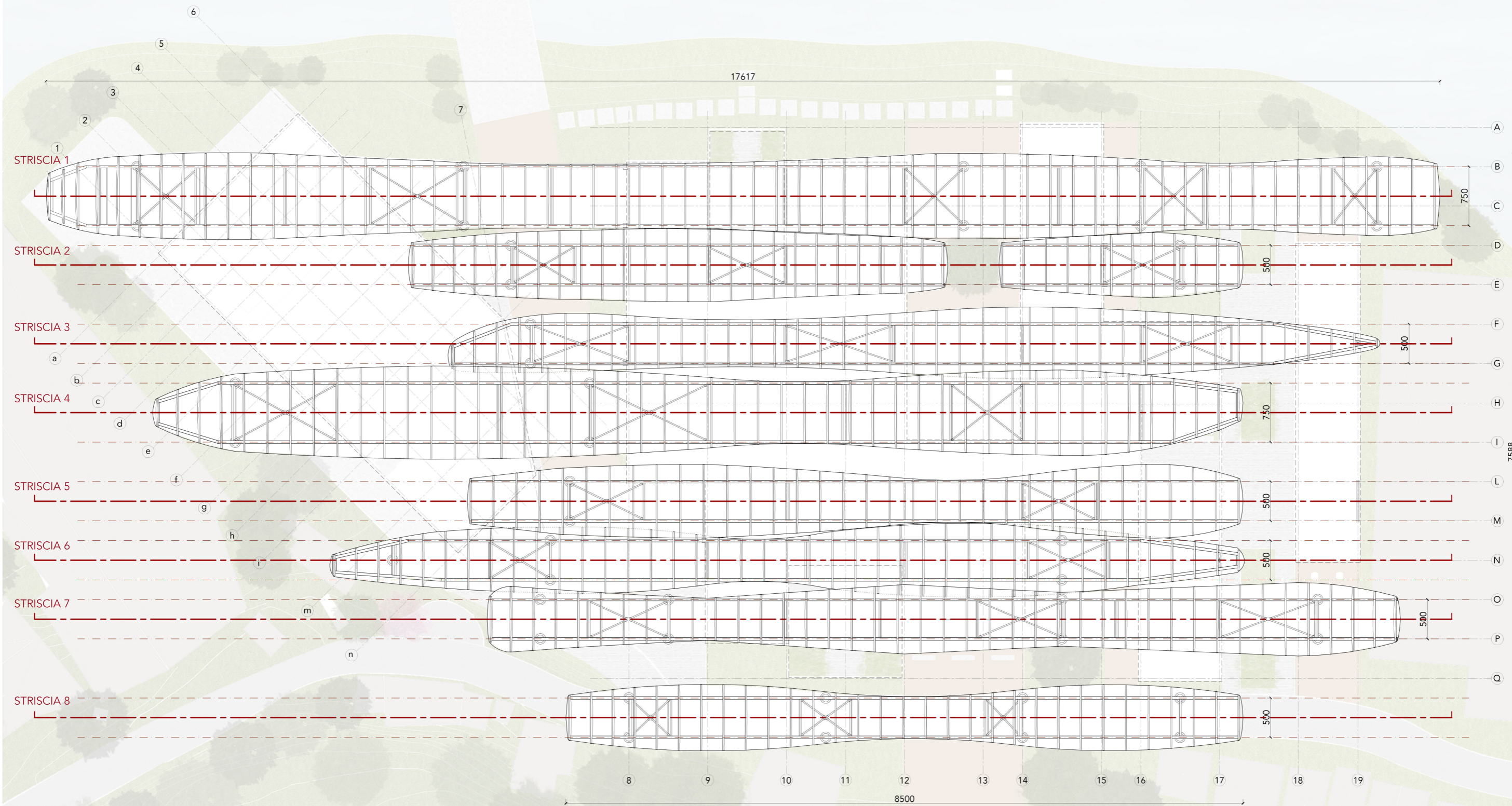
SEZIONE LONGITUDINALE DI OSTELLO E BAMBOO FOREST



VISTA FOTOREALISTICA DELL'INGRESSO ALLA BAMBOO STRIP



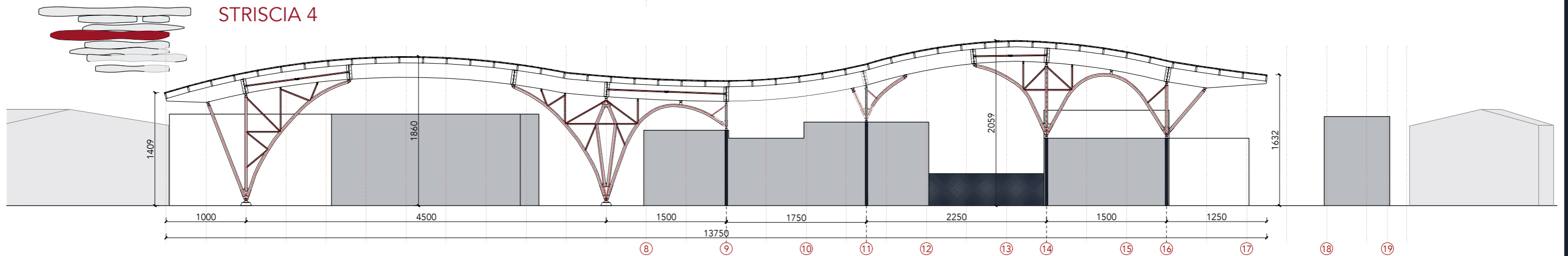
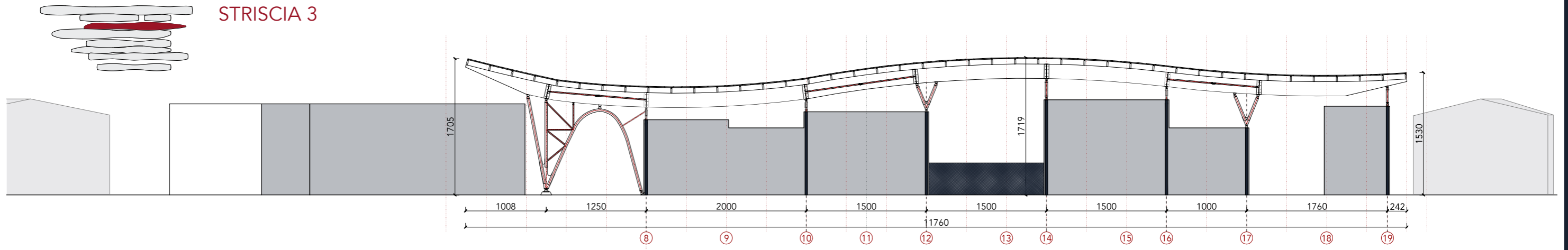
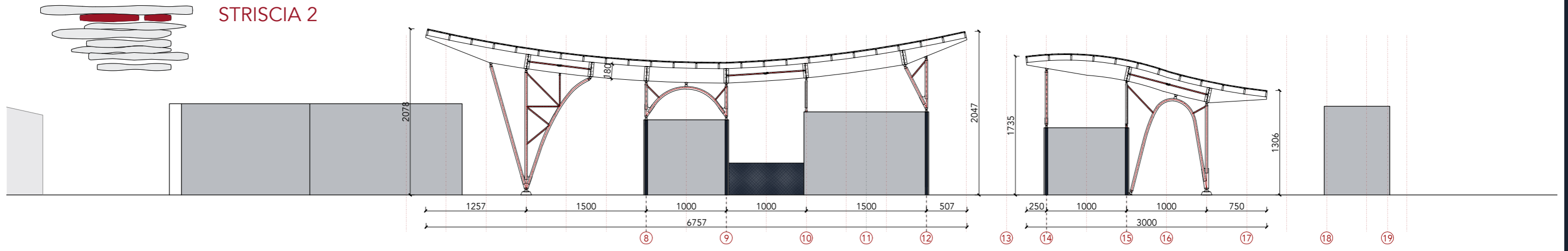
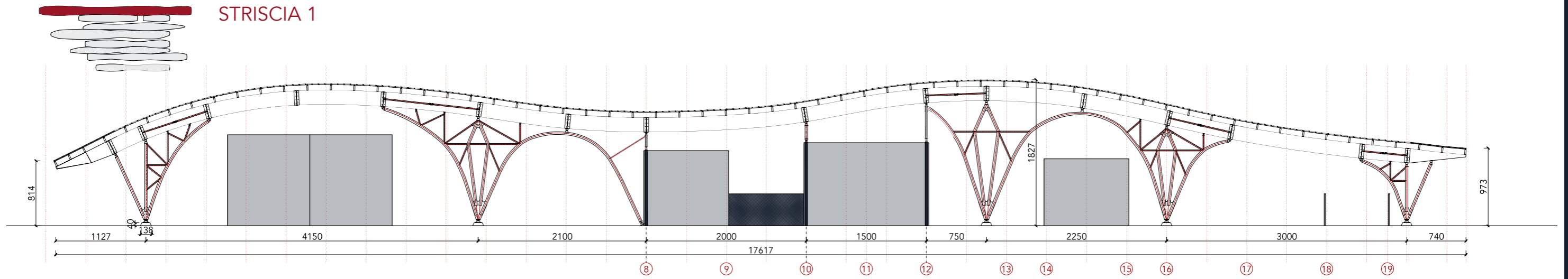
VISTA FOTOREALISTICA DELLA BAMBOO STRIP DALL'INGRESSO ALLE SALE ESPOSITIVE

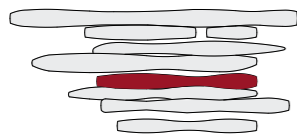


SEZIONI LONGITUDINALI STRISCE 1-4
TAV. 20

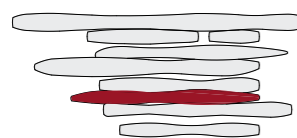
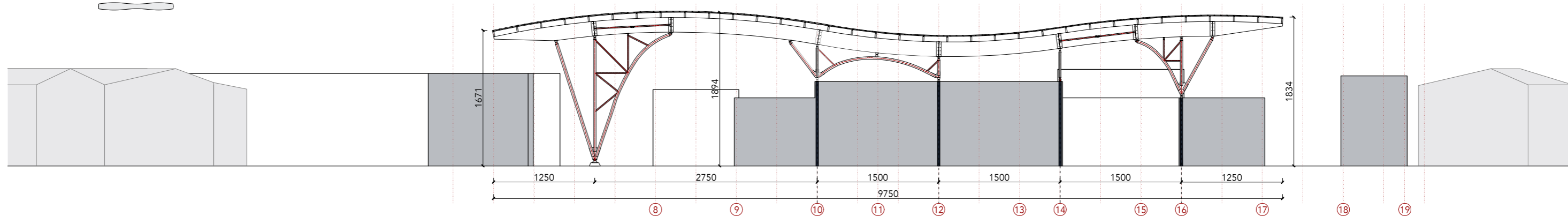
SEZIONI LONGITUDINALI STRISCE 5-8
TAV. 21

SUPERFICIE COPERTA DALLE MEMBRANE
≈ 8200 m²

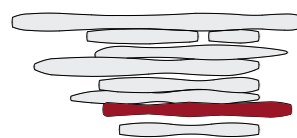
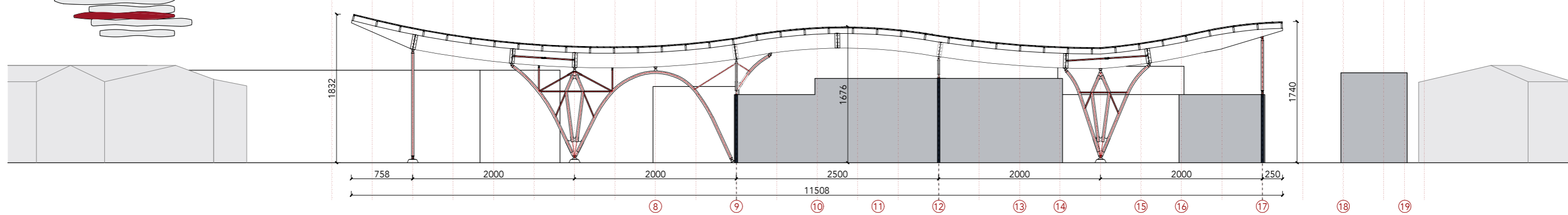




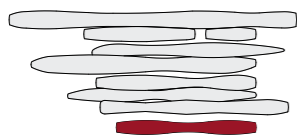
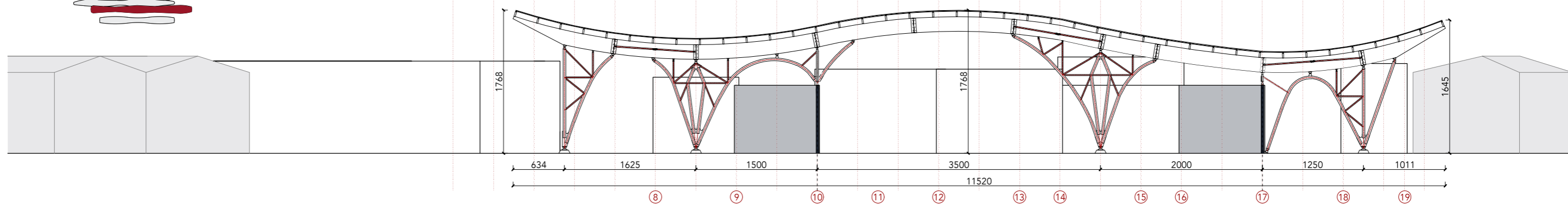
STRISCIA 5



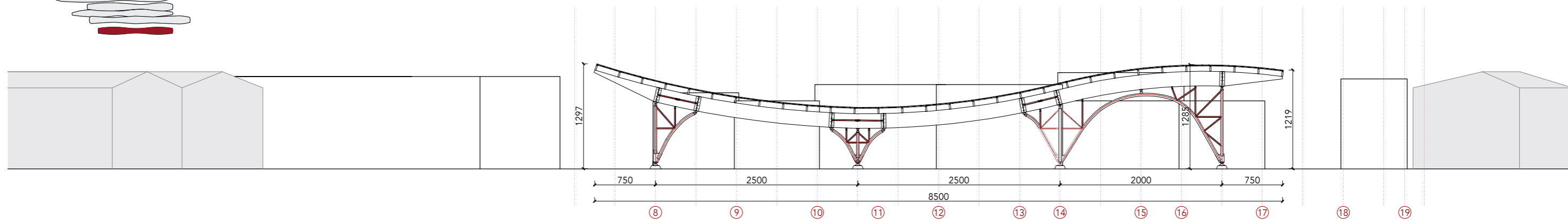
STRISCIA 6



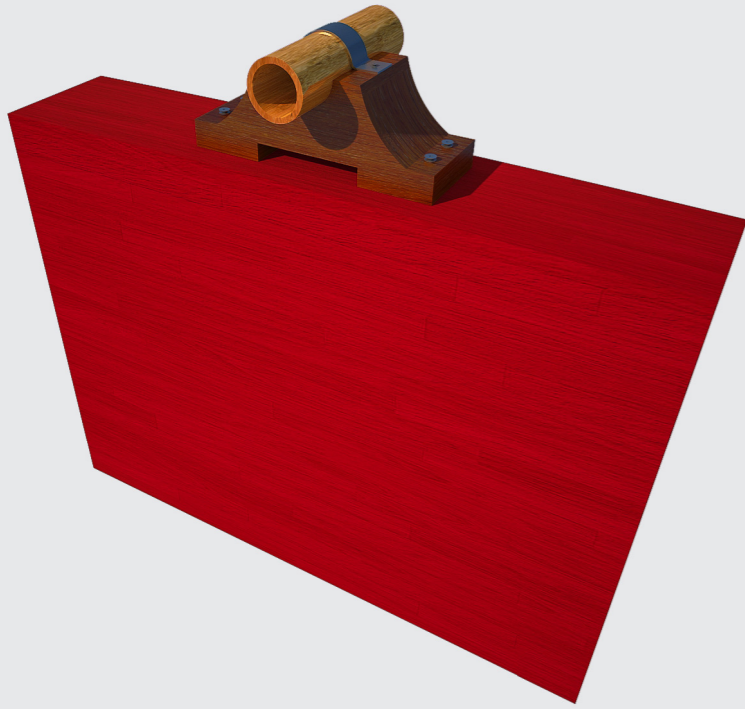
STRISCIA 7



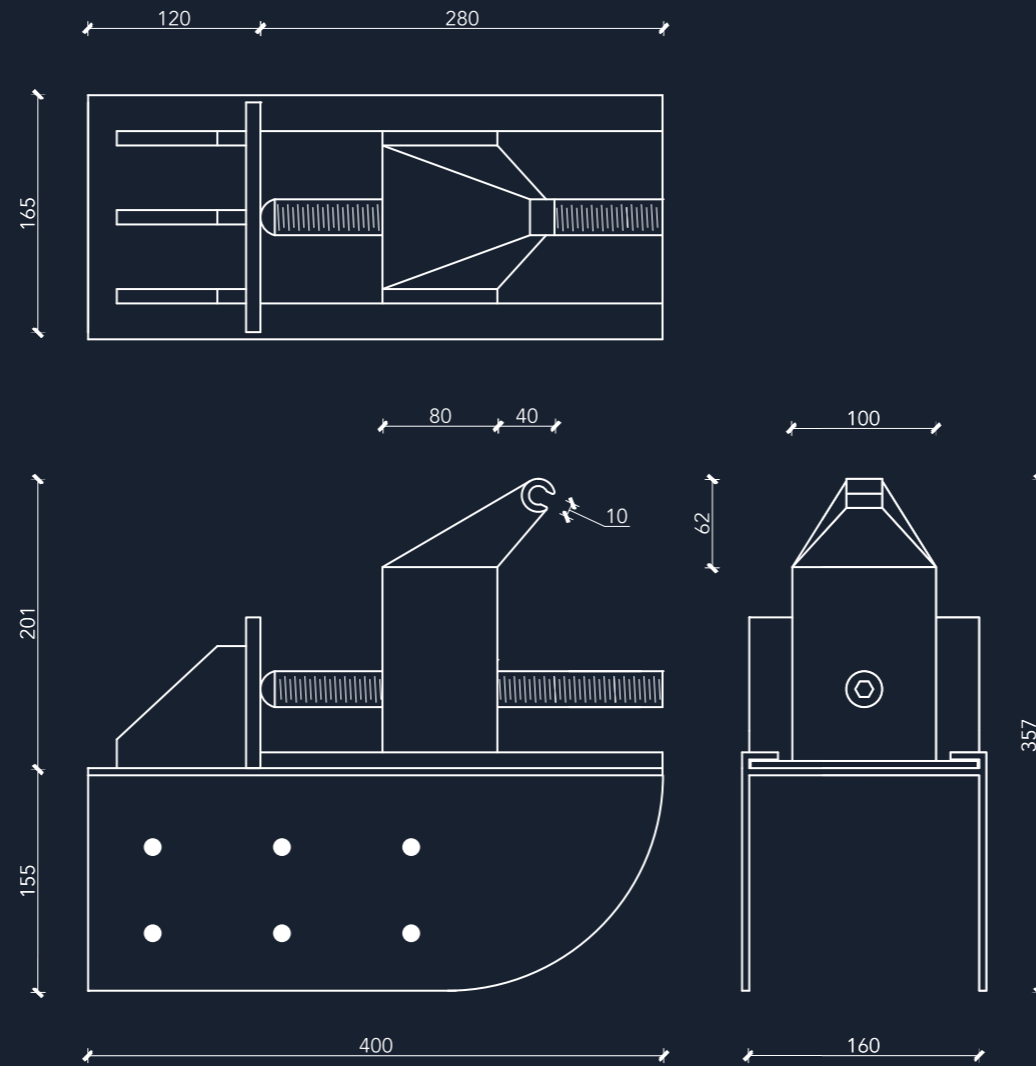
STRISCIA 8



DETTAGLIO 1



DETTAGLIO 2



Scala 1:5

DETTAGLIO 3

