

transient



Mies Van der Rohe, Padiglione di Barcellona - PADIGLIONE



Christo & Jeanne-Claude, Running fences - 1

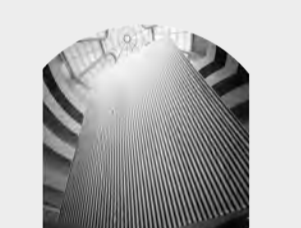


Anya Callaccia, Intensities and surfaces - 2

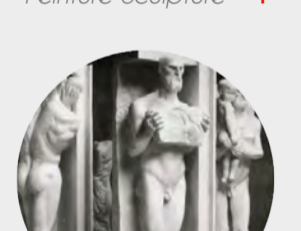
rejected



Richard Serra, Tilted Arc - 3



Daniel Buren, Peinture-Sculpture - 4

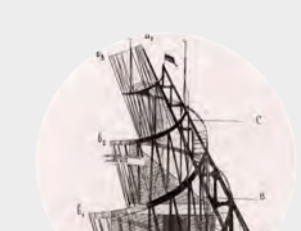


Jacob Epstein, Sculpture for BMA - 5

unrealized



Diego Rivera, Man at Crossroad - 6



Vladimir Tatlin, Monument to the third international - 7

attacked



Gustav Klimt, University of Vienna Ceiling Paintings - 8



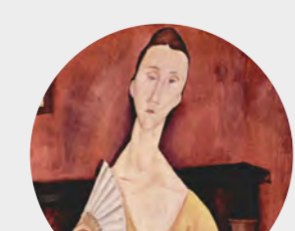
Keith Haring, Berlin wall mural - 9



Egon Schiele, Self-seer - 10



Lucian Freud, Francis Bacon - 11



Amedeo Modigliani, Donna con ventaglio - 12



Pablo Picasso, Le Pigeon Aux Petits Pois - 13



Joan Miró, The Reaper - 14



Marcel Duchamp, Fountain - 15



Edward Ihnatowicz, Senster - 16



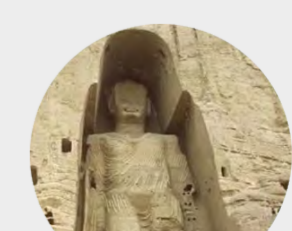
Francis Bacon, Study for Man with Microphones - 17



Willem de Kooning, Untitled - 18



John Baldessari, Cremation - 19



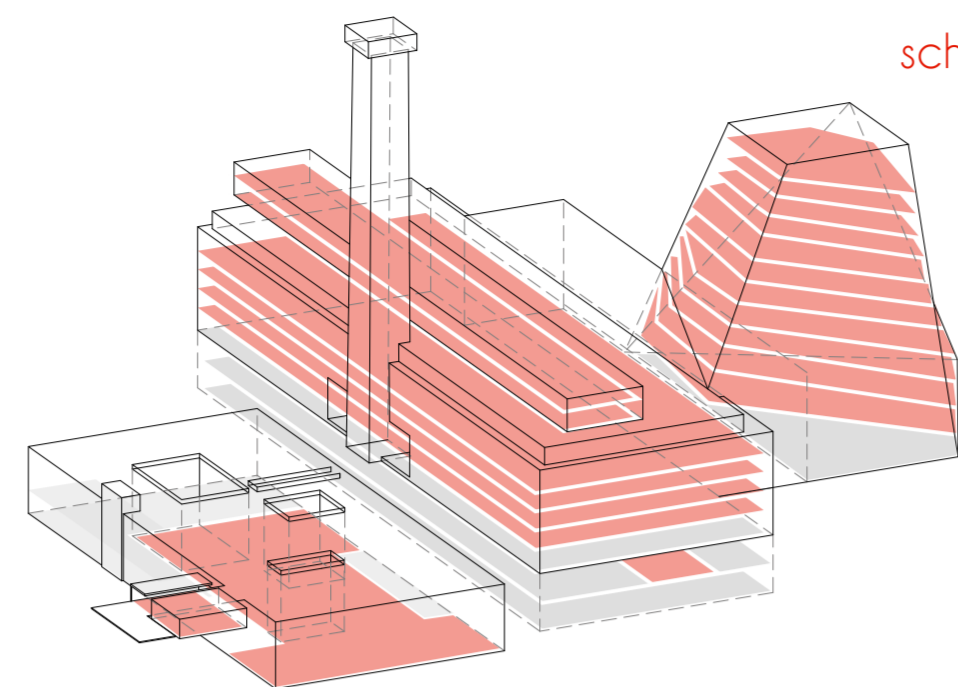
Scuola Lokottoravadin, Buddha - 20



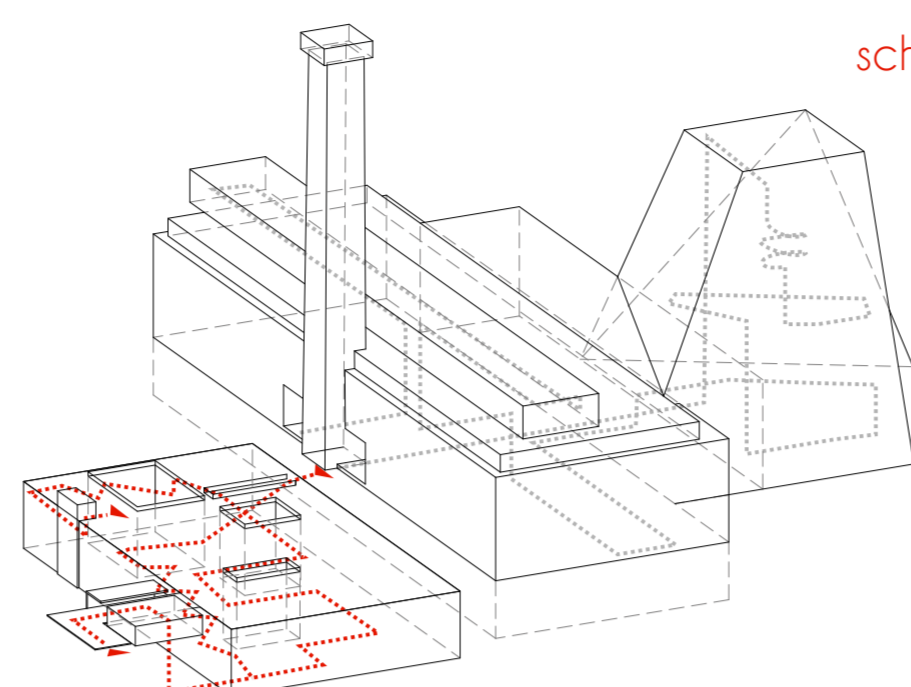
Alexander Calder, Bent Propeller - 21



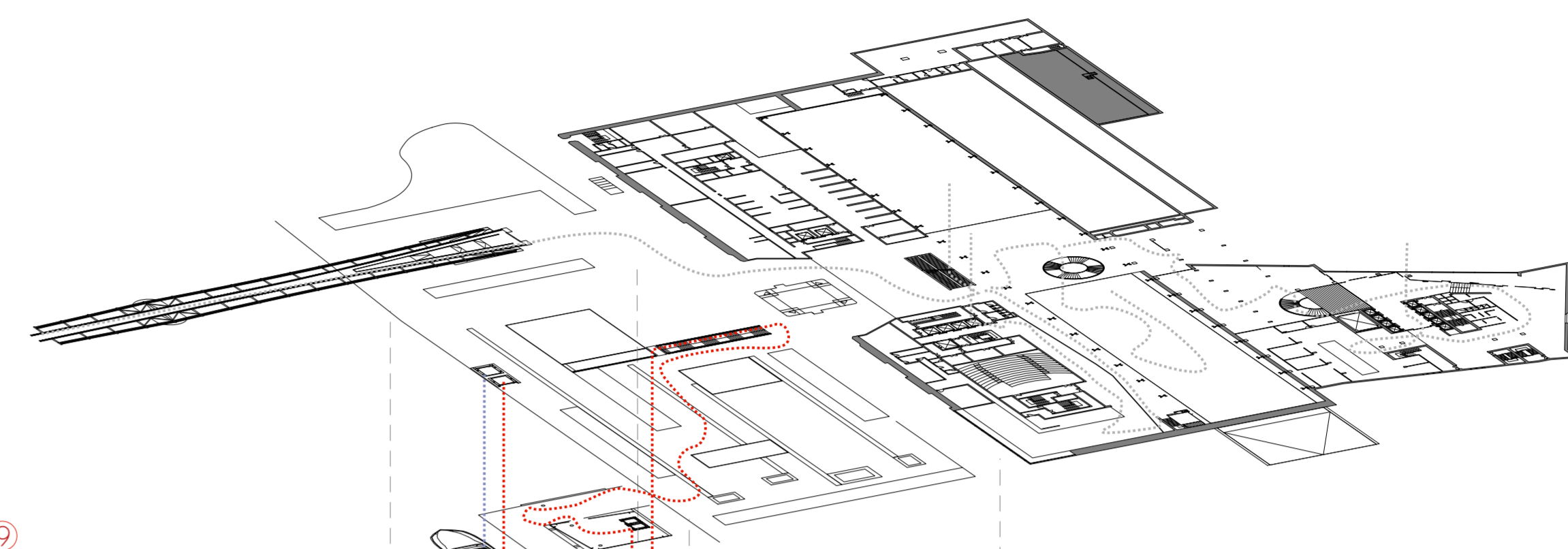
Wassily Kandinsky, Composition I - 22



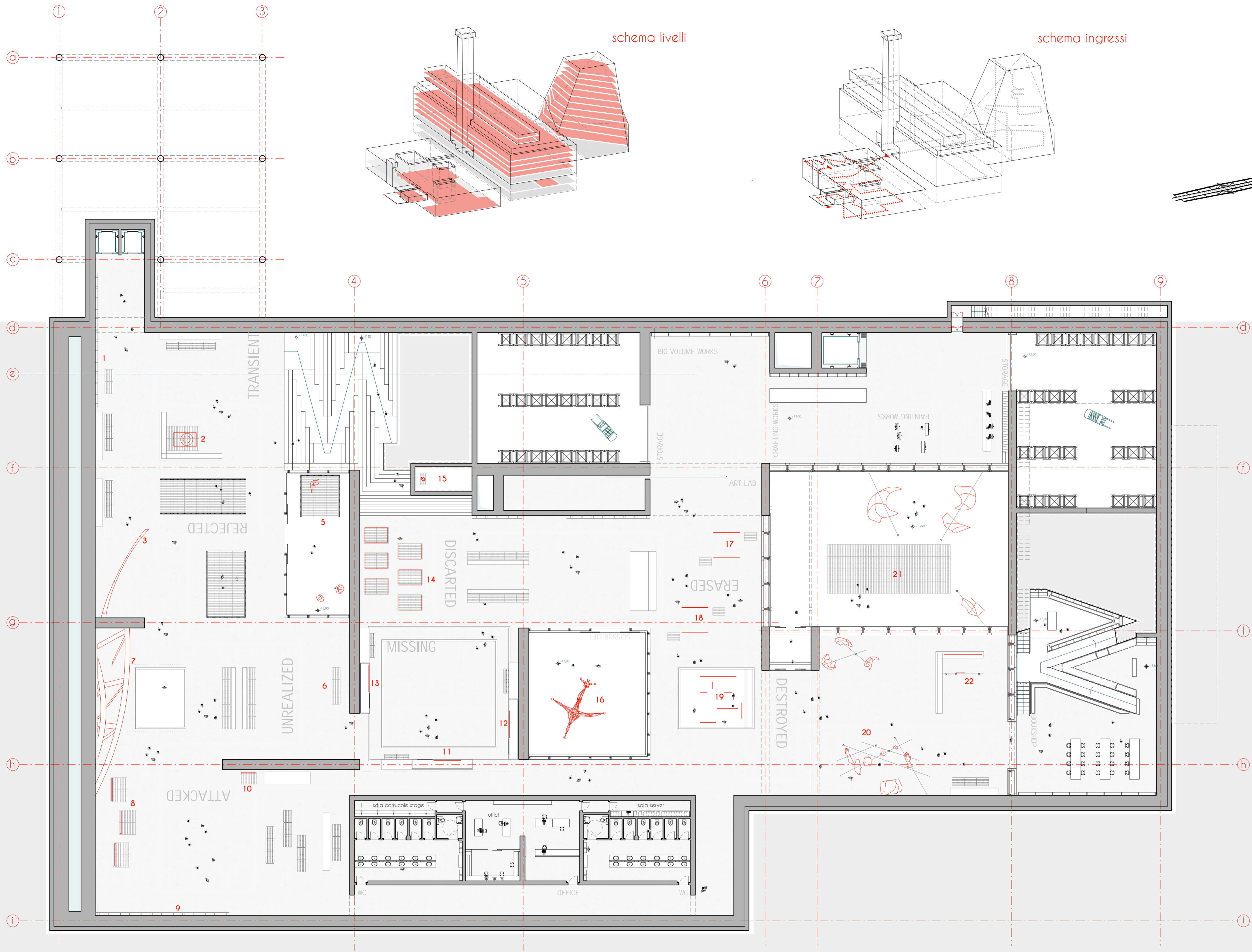
schema livelli



schema ingressi



schema percorsi



livello -8,40 m

accessibile mediante la scalinata lineare prospiciente l'ingresso della TATE Modern o utilizzando l'ascensore situato lungo la banchina

livello -13,80 m

accessibile dal piano superiore attraverso una rampa-scalinata espositiva che introduce alle tematiche del museo

Lo spazio museale si sviluppa su una pianta libera non vincolando il visitatore al solo percorso consigliato che prevede la percorrenza di entrambe le rampe attrezzate come vie d'accesso e di uscita.

Le 22 opere sono distribuite attorno ai tre patii realizzando scenografie temporanee ed allestimenti sfruttando la modularità e la coerenza tematica dei banconi da trasporto.