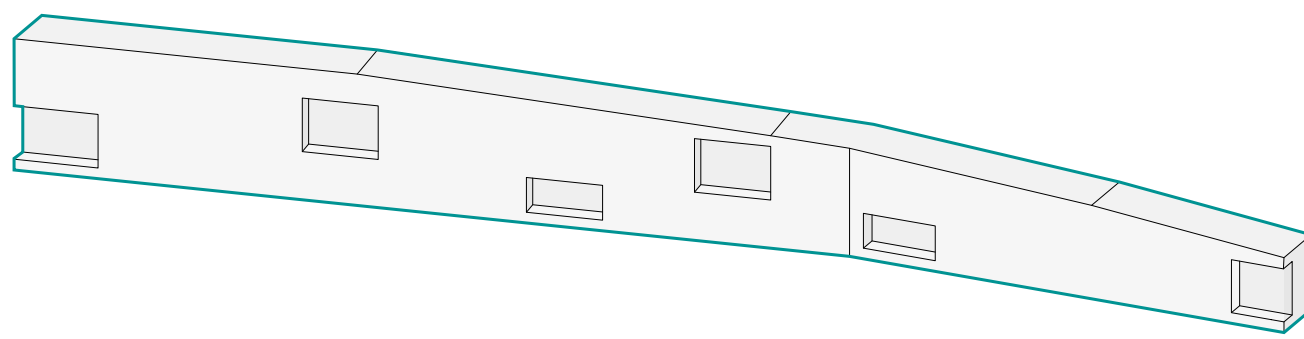


HIGH DENSITY TERRACE

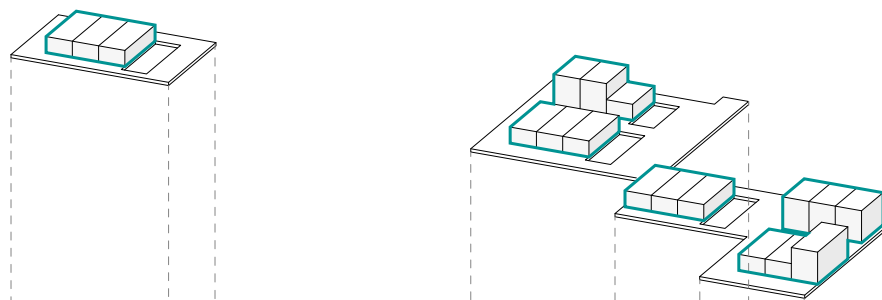
+ 26.00



STUDENT HOUSING

A porous and populated wall to protect the rest of the area from the railway.

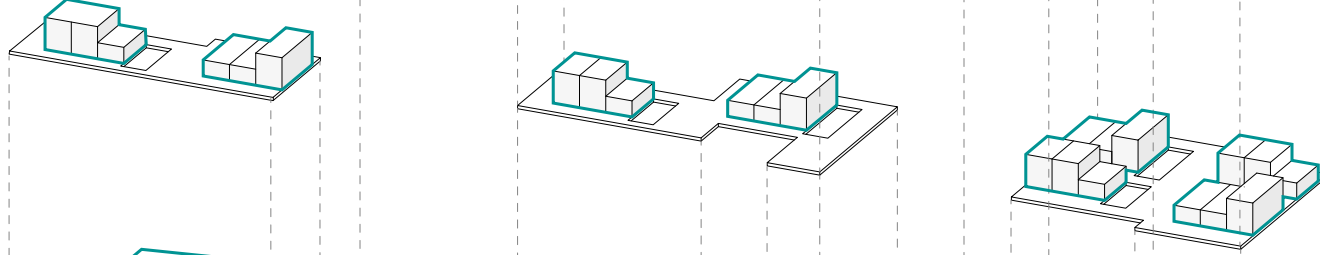
+ 6.00



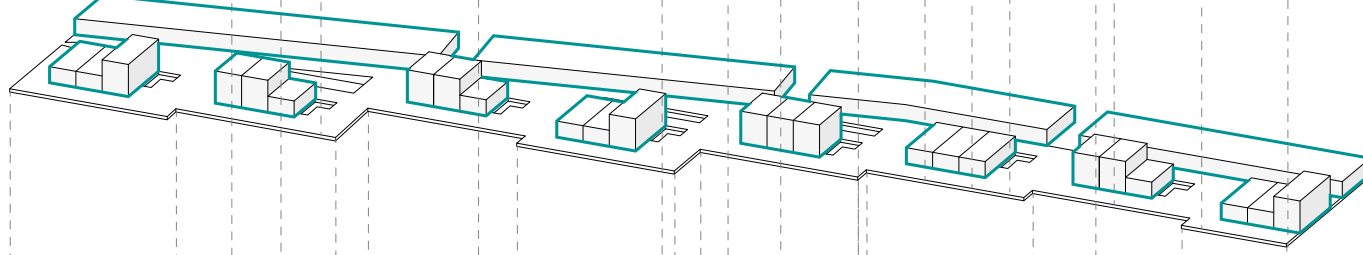
AFFORDABLE HOUSING

The typical street profile is changed moving the houses in three different levels all connected by ramps.

+ 5.00



+ 4.00

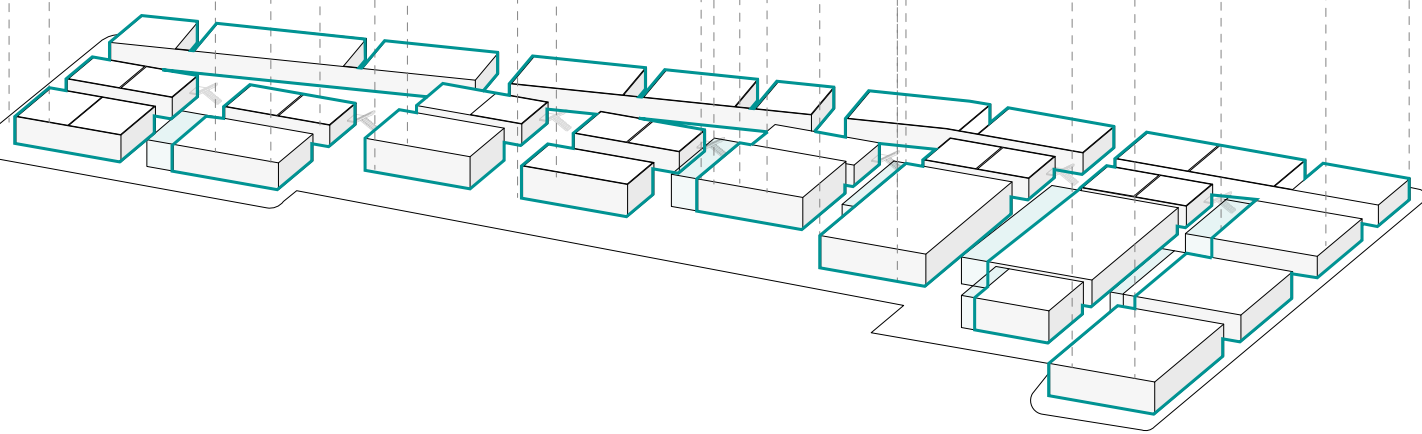


GROUND FLOOR

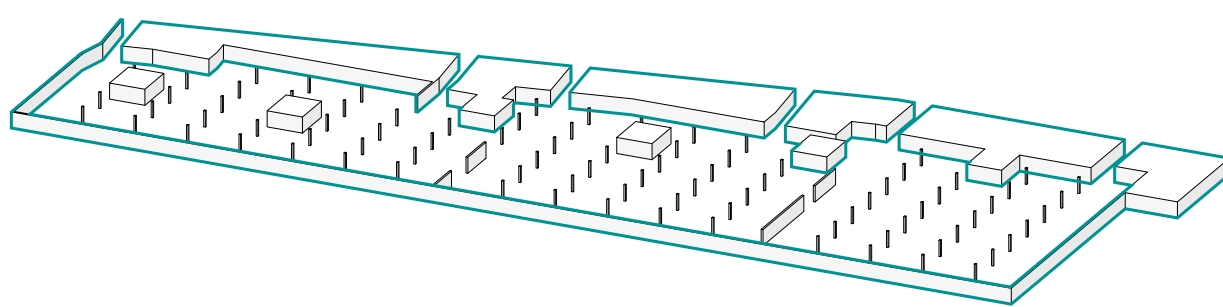
The ground floor host public services supporting the university, the carriageworks and Redfern station.

The difference of height of the floor upstairs let more sun light to come inside and it is reflected on the services.

+ 0.00

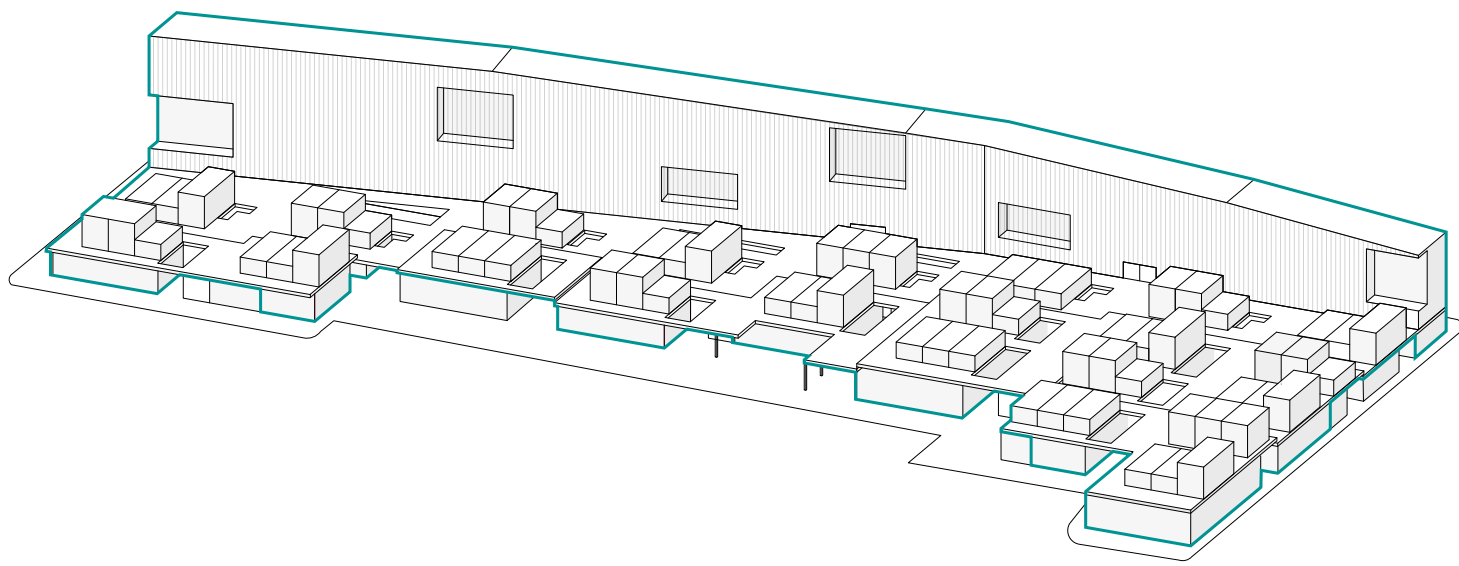


- 2.70



BASEMENT

Public parking



PROPOSAL

PRIVACY DEGREES

Public
//Ground floor

Semi-Public
//First floor

Semi-Private
//First floor

Private
//Ground floor up

USERS

Students



Families & housing rediseints



Carriageworks & University Users



Community Users



PROGRAM

Affordable Housing

Student Housing

Studios

Common study rooms

Book store

Restaurant

Bar

Stores

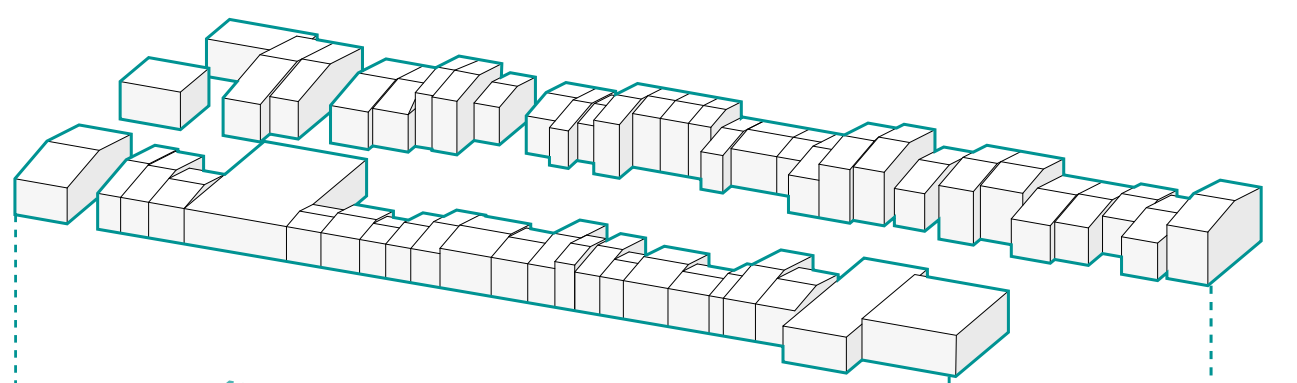
Storage

Co-Working

Conference room

Study Room

Parking



TYPICAL BLOCK

It is usually composed by row houses, terraces, with the typical victorian colony facade but they don't have any relations between each other.

