



COMPARISONS// PROPOSAL



Supporting University 3 835 msq
 Supporting Redfern 3 025 msq
 Parking 2 040 msq
 9 900 msq

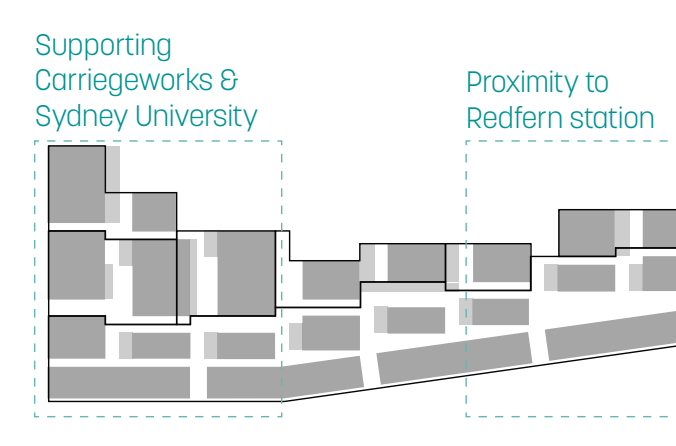


Open 2 935 msq
 Closed 8 015 msq



Students 290
 Housing 104
 Typical block no distinction 63

Flows
 Three entrances connect the new street with the services and an underground parking provide for the public and dwellings.
 Getting from Redfern station the "entrance" is where the two main patios are. There are two longitudinal flows, the main one, which is wider, and the second one, narrower, is along the student building ground floor.



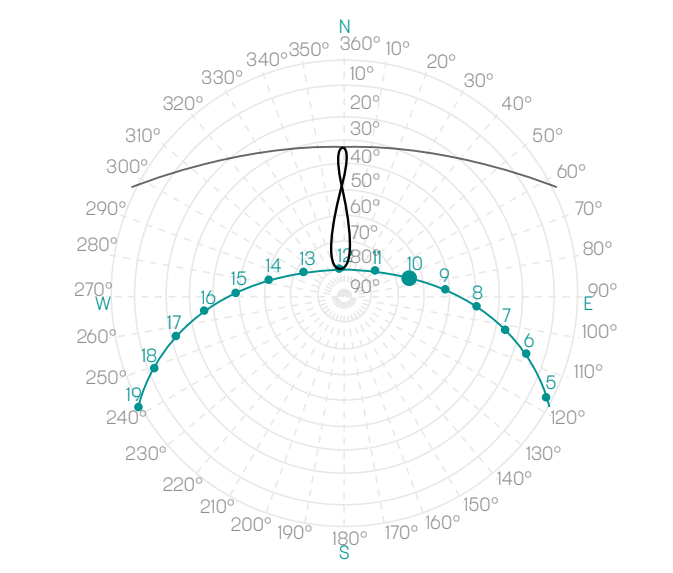
Functions
 Services such as a bookstore, bars, conference room, coworking space, restaurant are closer to the Carriageworks while stores are along the street and closer to the station.
 Depending on the internal height, the ground floor and the function assume different function and become different spaces.

BASEMENT // PARKING

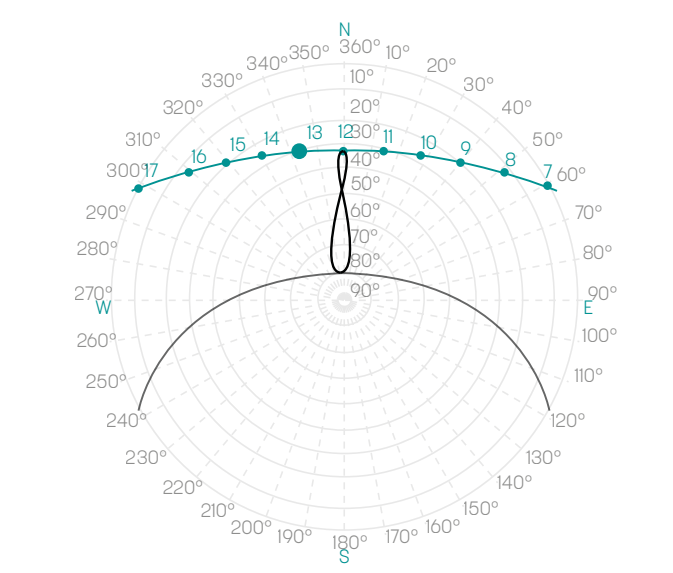


SOLAR FACTOR

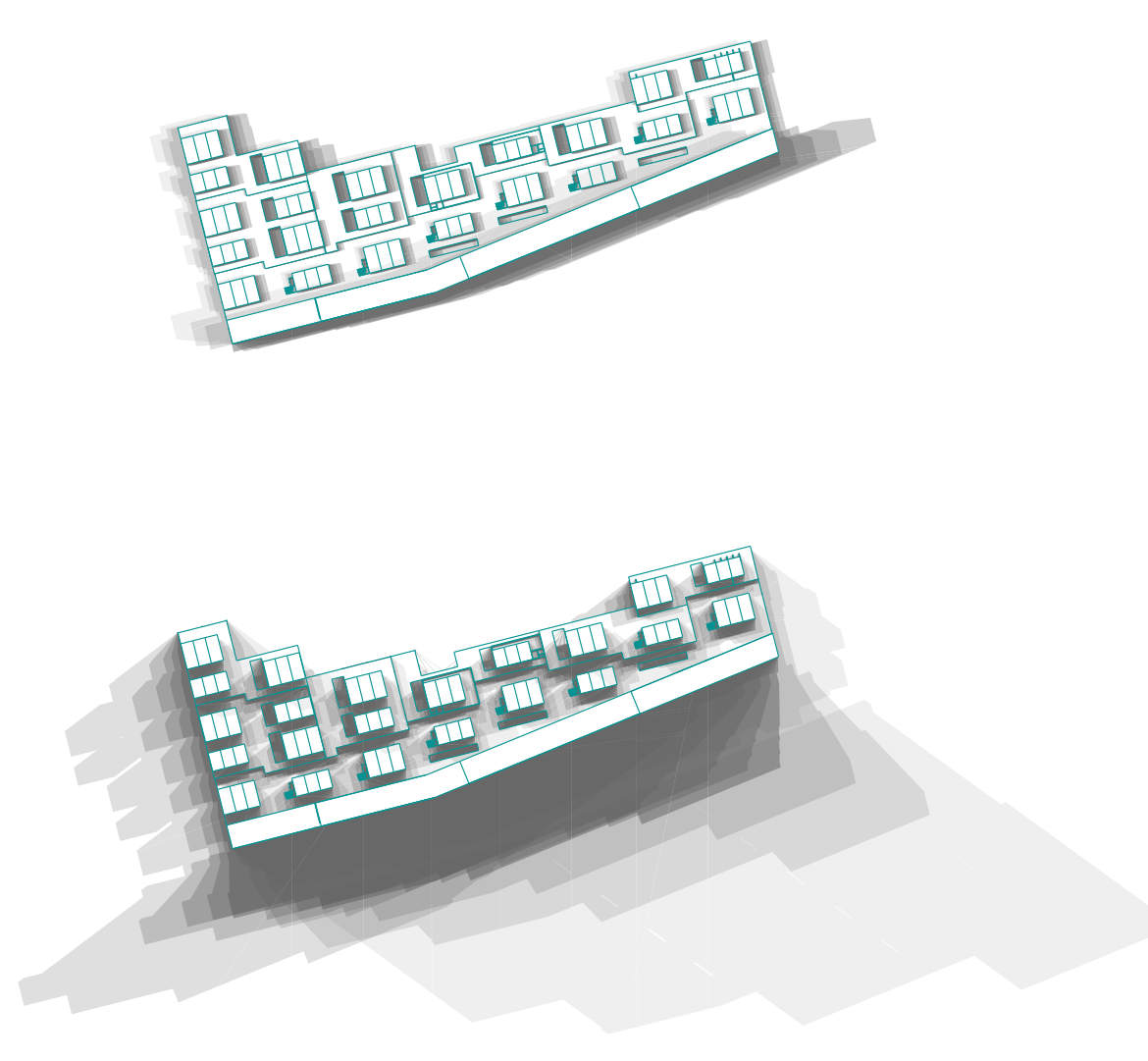
SUMMER SOLSTICE
 date 21/12/2014
 from 09:00 am to 17:00 am
 time 10:00
 azimuth 72.68°
 elevation 64.4°



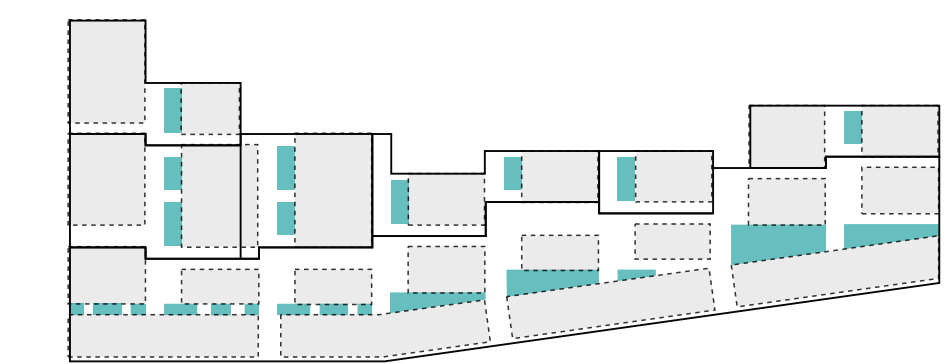
WINTER SOLSTICE
 date 21/06/2014
 from 09:00 am to 17:00 am
 time 13:00
 azimuth 343.14°
 elevation 30.74°



SHADOWS



SUMMER & WINTER MAXIMUM SUN



Light // Patios
 Each function gain directly the solar light from the border or from the patios.
 Each gap between the first floor levels let indirect solar light to reach the ground floor.

