

# TENERIFE

## LOCATION :

28° 16' 7" N, 16° 36' 20" W

Tenerife is the largest and most populous island of the seven Canary Islands; it is also the most populated island of Spain and Macaronesia.

The land area is 2,034.38 square kilometres.

The population of the island is almost 898,680 inhabitants, which is 43 percent of the total population of the Canary Islands.

About five million tourists visit Tenerife each year, which is giving it the highest economic position between all the Canary Islands.

The island has the highest elevation of Spain, a World Heritage Site that is the third largest volcano in the world from its base, El Teide.

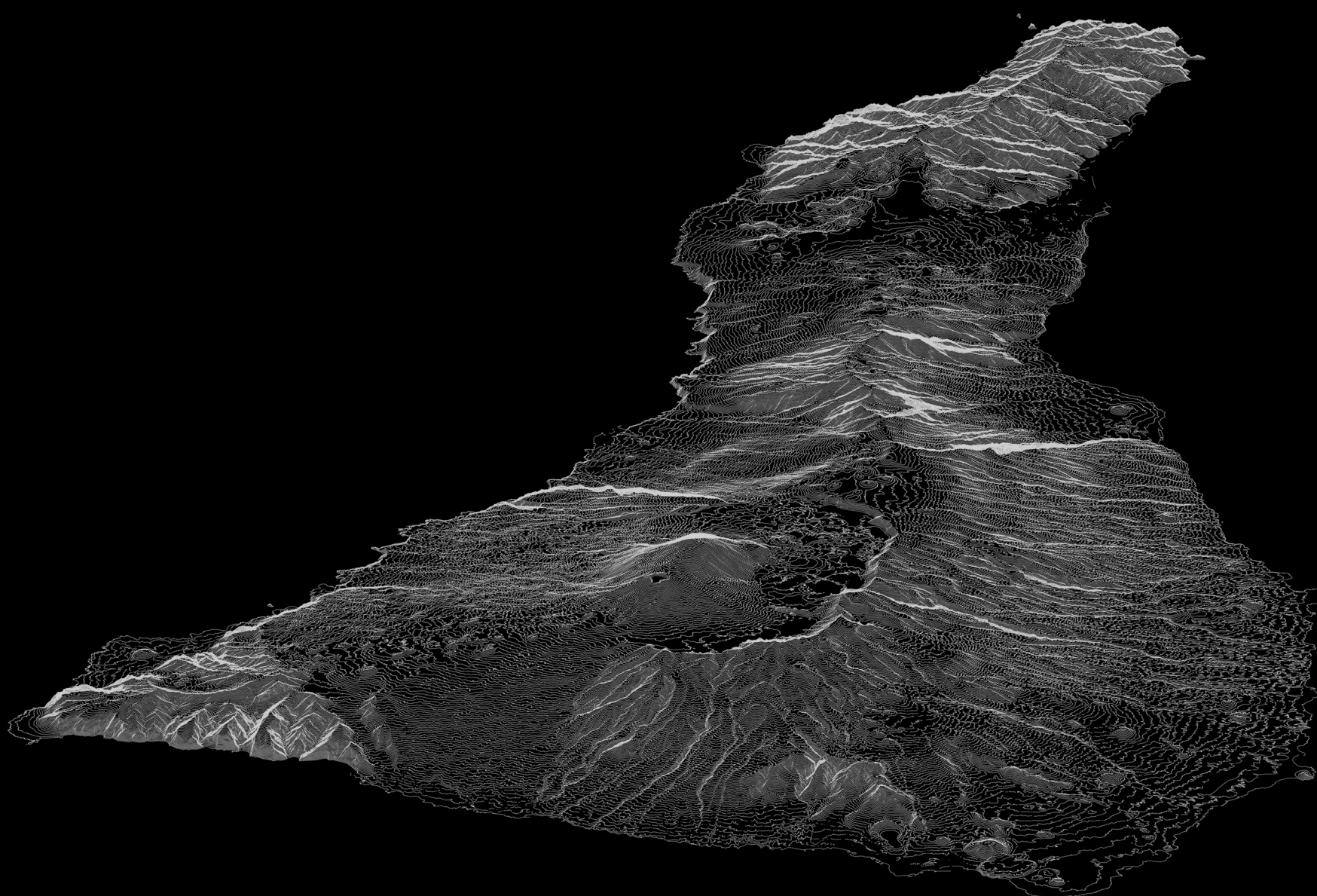
The economy of Tenerife, predominantly based on agriculture and trade until the 1970s, is now focused on the service industry – mainly tourism – which has promoted construction and services linked to tourism activity making almost 65% of GDP. Industry is scarce, representing about 7 or 8% of GDP, mainly in agriculture and food sectors, tobacco, and oil refinery. Energy sector is starting now in the island making almost 3% of GDP. Primary sector - agriculture - is representing 10% of GDP and commerce is representing 15% of GDP.

With regard to the primary sector, only 10% of the surface area of the island is cultivated – mainly drier lands (vines and potatoes), with a small proportion of irrigated land (mostly dedicated to banana and tomato crops). Export agriculture is targeted at trade with national markets and the European Union. The island has also started to export other tropical fruits (avocado, pineapple, mango, and other greenhouse crops) and flowers.

The limited nature of this island territory and the great economic growth experienced by Tenerife in recent years are the factors which determine the island's demographics, which are also quite specific. The territory provides a home for more than 800,000 inhabitants, and boasts two of the three cities of the Canary Islands with more than 100,000 inhabitants, Santa Cruz and La Laguna, Arona, with a population of over 70,000, and Adeje, both in the touristic south of the island and showing an annual population growth of more than 13%. As one of the Canary Islands' capital cities, it experiences high rises in its population density.

The coast and surrounding areas are the most densely inhabited zones.

Population growth in Tenerife has depended more on external flows of incomers than on natural growth, although the latter is still higher than the national average. These flows are, to a large extent, due to the circulation of people born in European Union states and other Autonomous Communities of Spain. Immigration, considered to be the influx of people from other countries, has also been an important factor affecting population growth, in particular immigration from Latin America.



POLITECNICO DI MILANO, SEDE DI PIACENZA  
LAURA MAGISTRALE

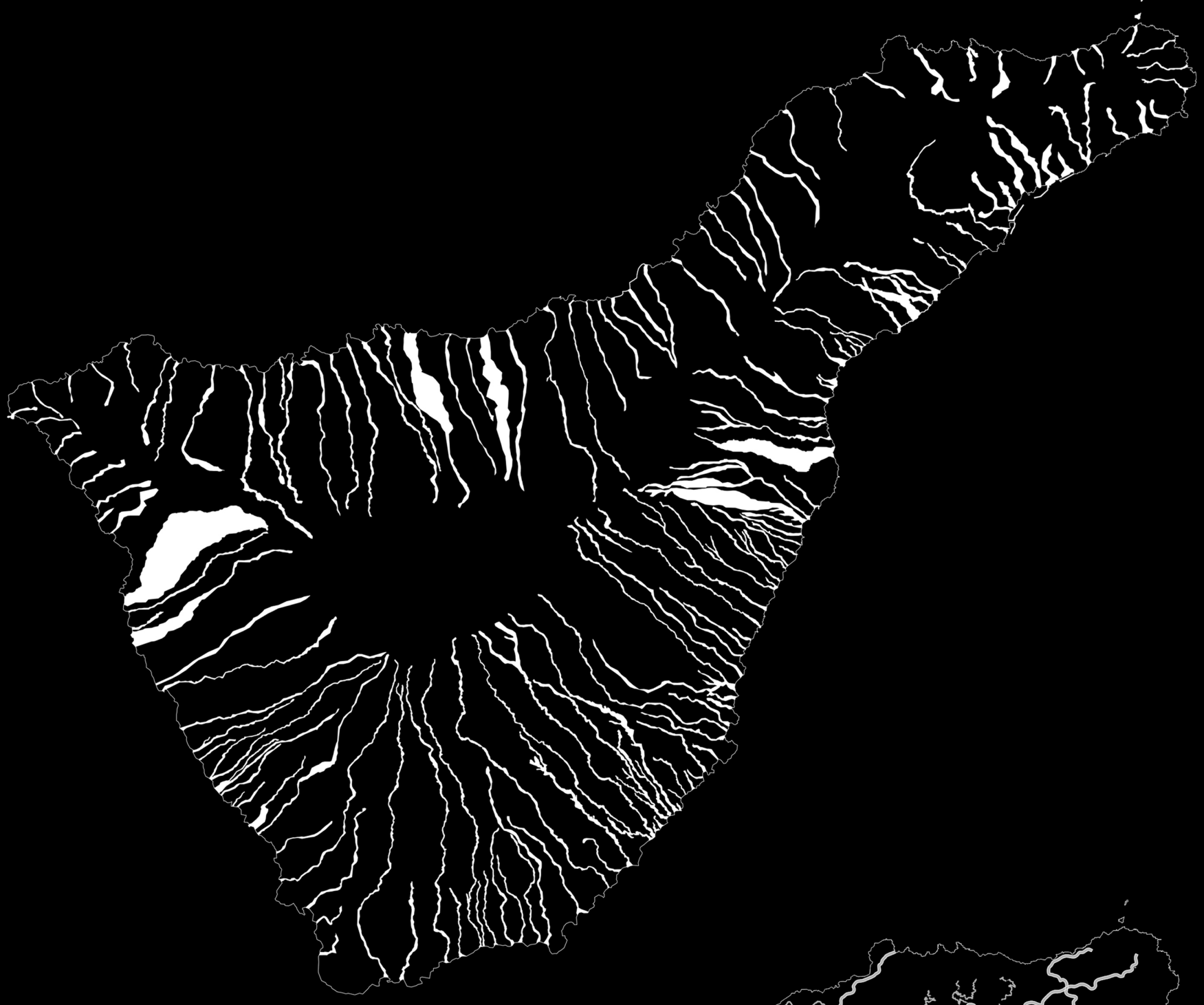
RELATORE : GUYA BERTELLI  
CO-RELATORE : JUAN CARLOS DALL'ASTA  
STUDENT : AHMED AMIN ELGHARIB - 799338

BETWEEN THE LINES

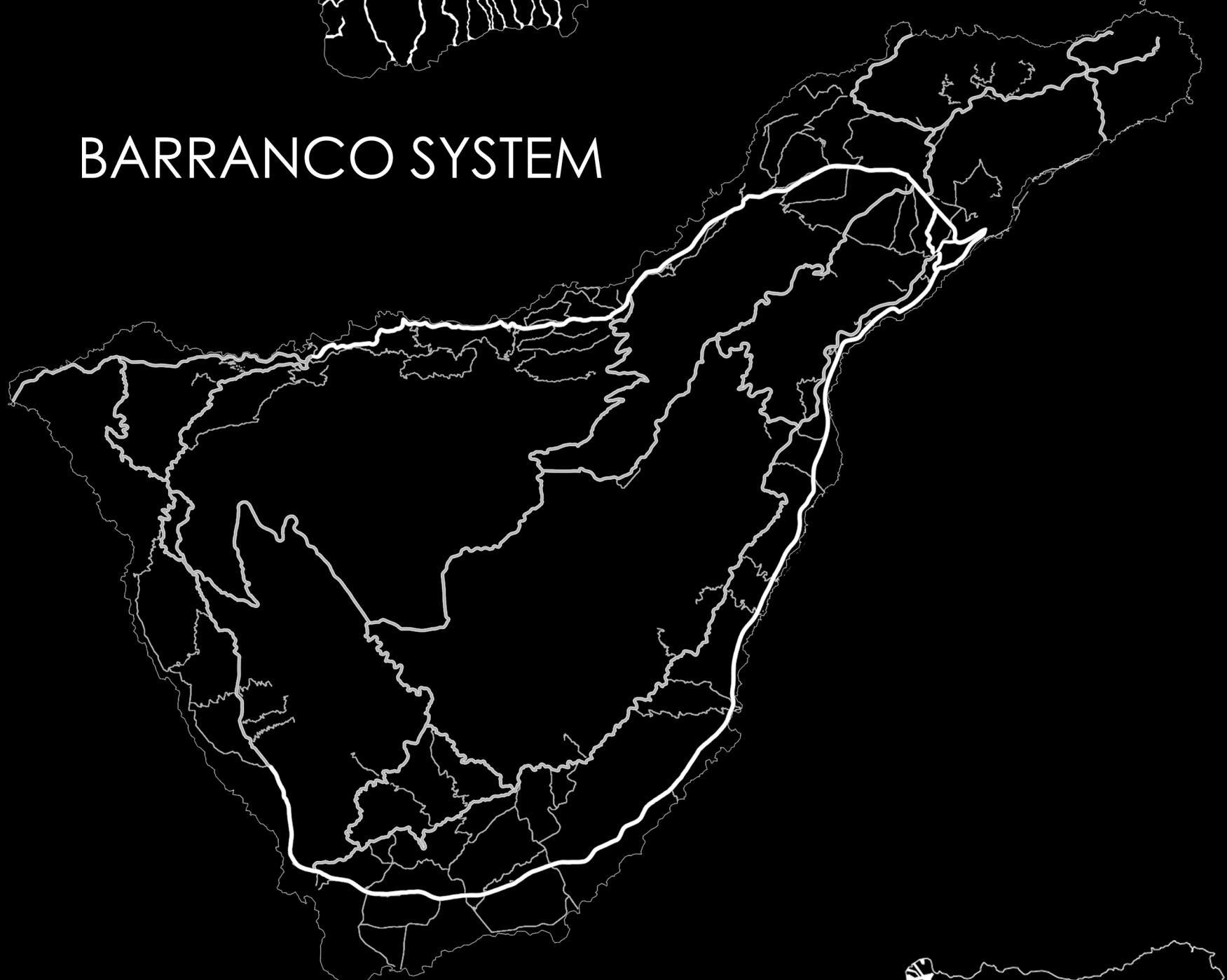
NATURE AND TECHNOLOGY RESEARCH PARK



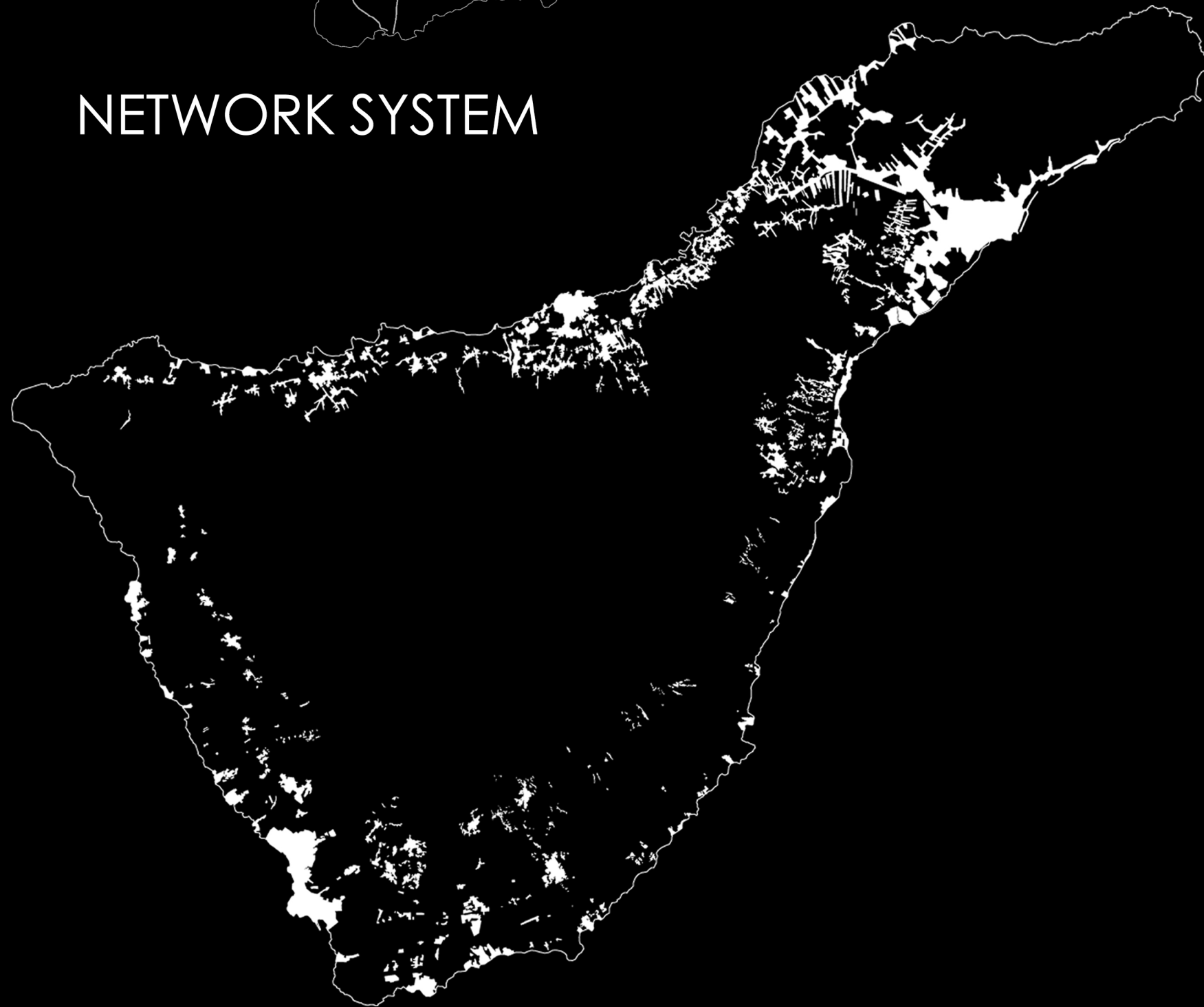
TENERIFE GENERAL  
INFORMATION



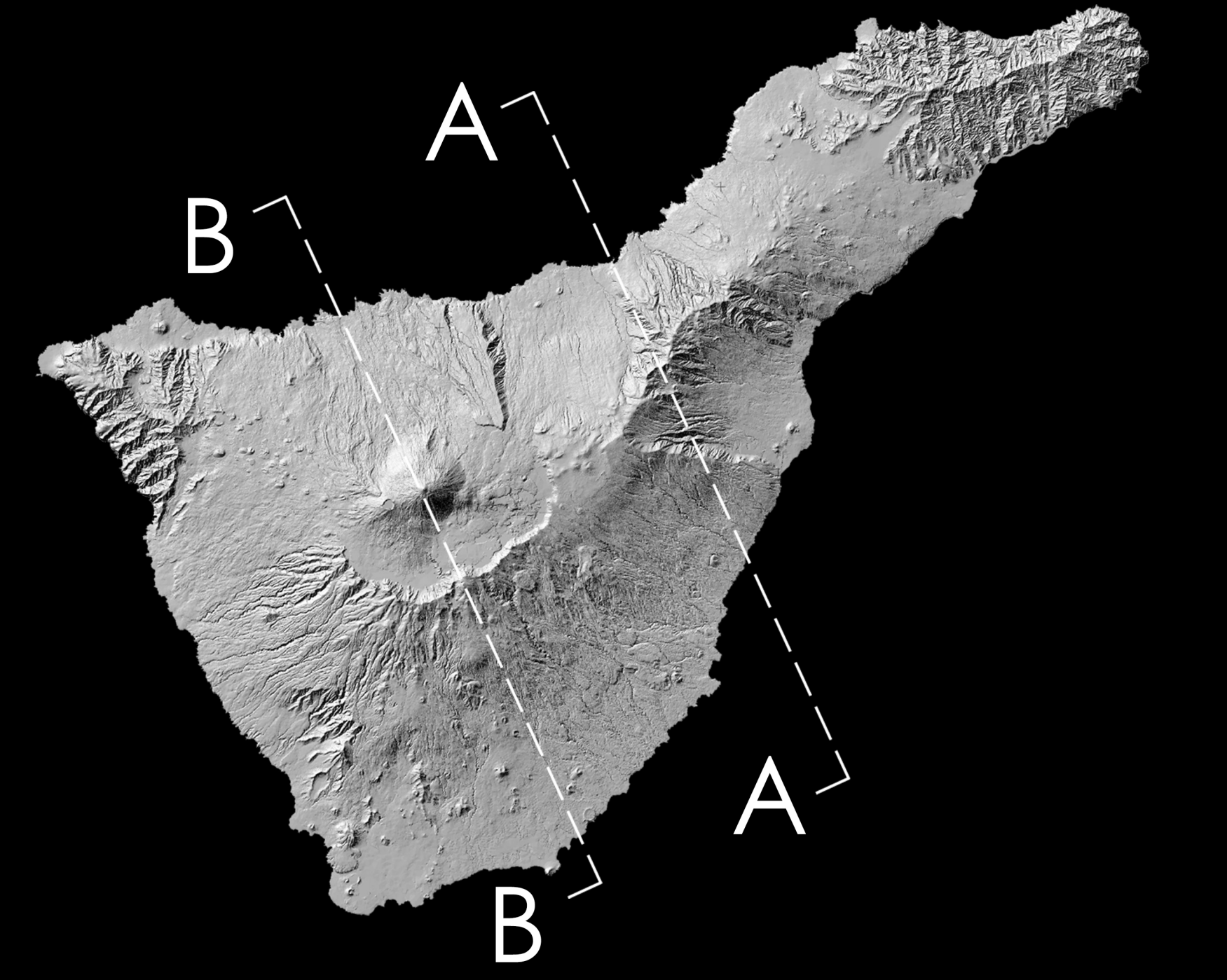
BARRANCO SYSTEM



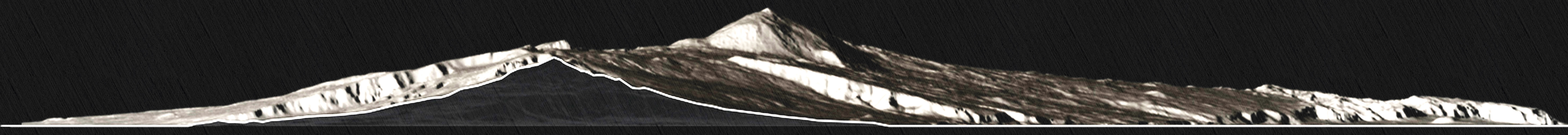
NETWORK SYSTEM



DEVELOPMENT SYSTEM



ISLAND SOUTH ELEVATION



SECTION A-A



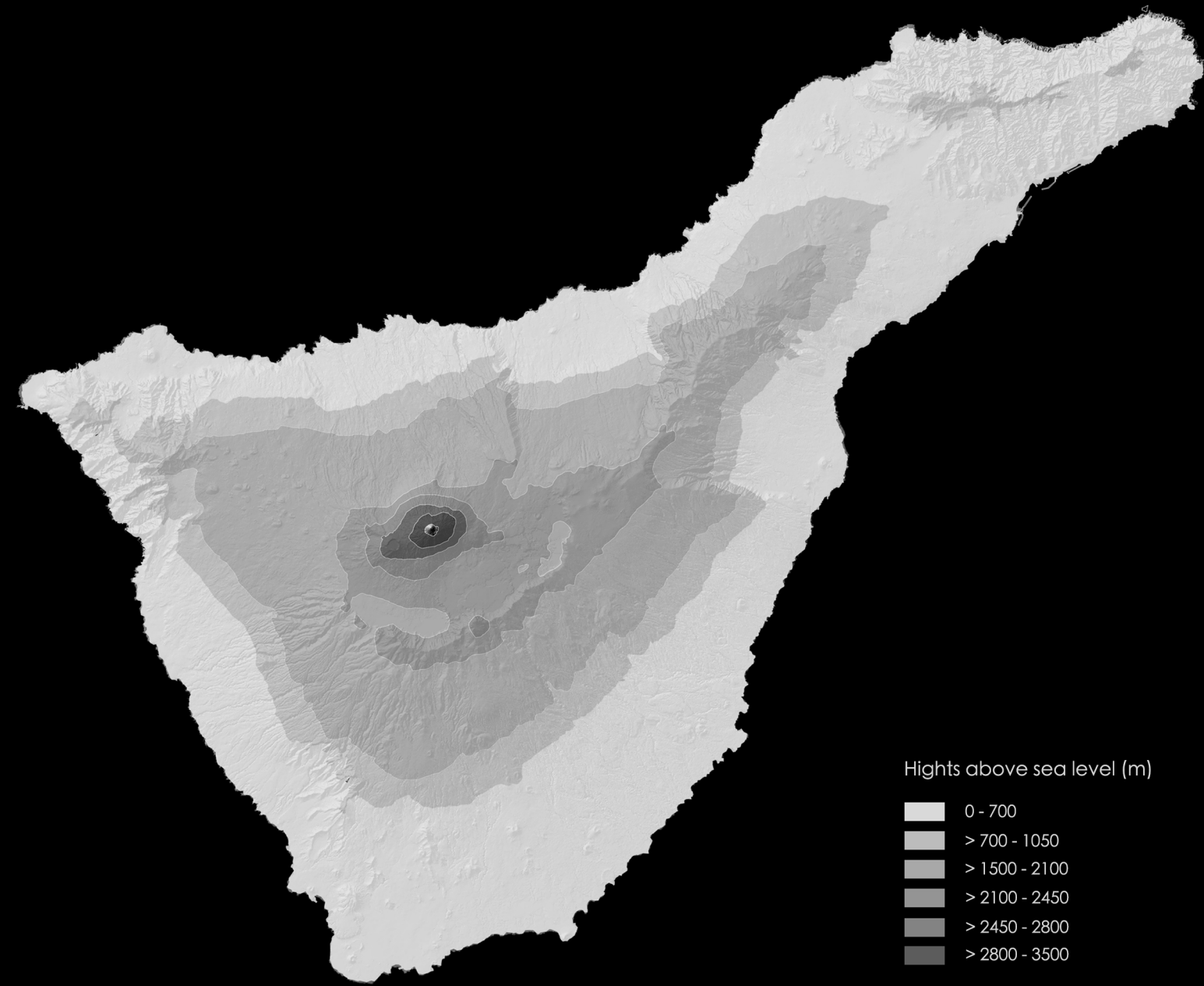
SECTION B-B



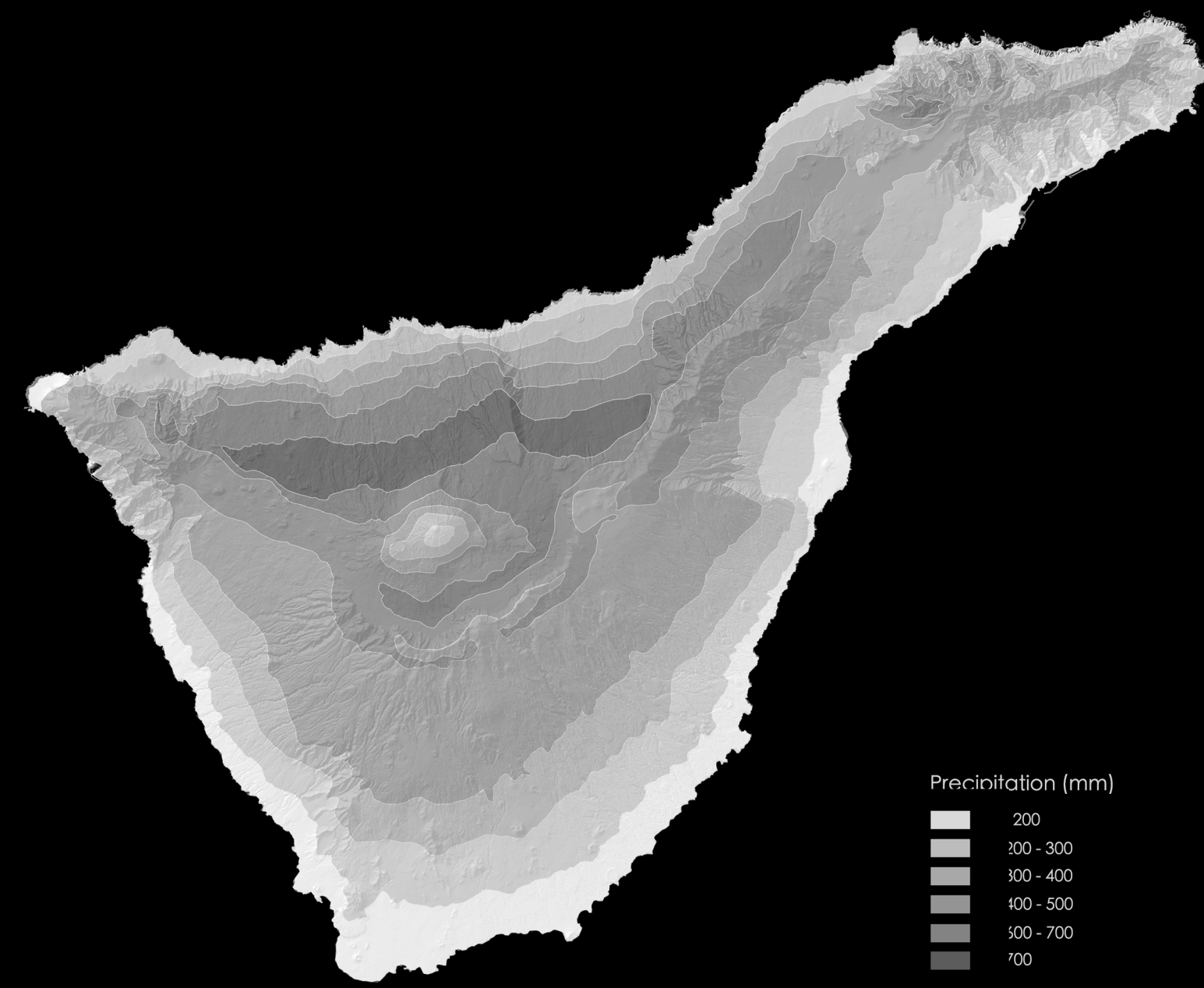
POLITECNICO DI MILANO, SEDE DI PIACENZA  
 LAURA MAGISTRALE  
 RELATORE : GUYA BERTELLI  
 CO-RELATORE : JUAN CARLOS DALL'ASTA  
 STUDENT : AHMED AMIN ELGHARIB - 799338

BETWEEN THE LINES  
 NATURE AND TECHNOLOGY REASEARCH PARK

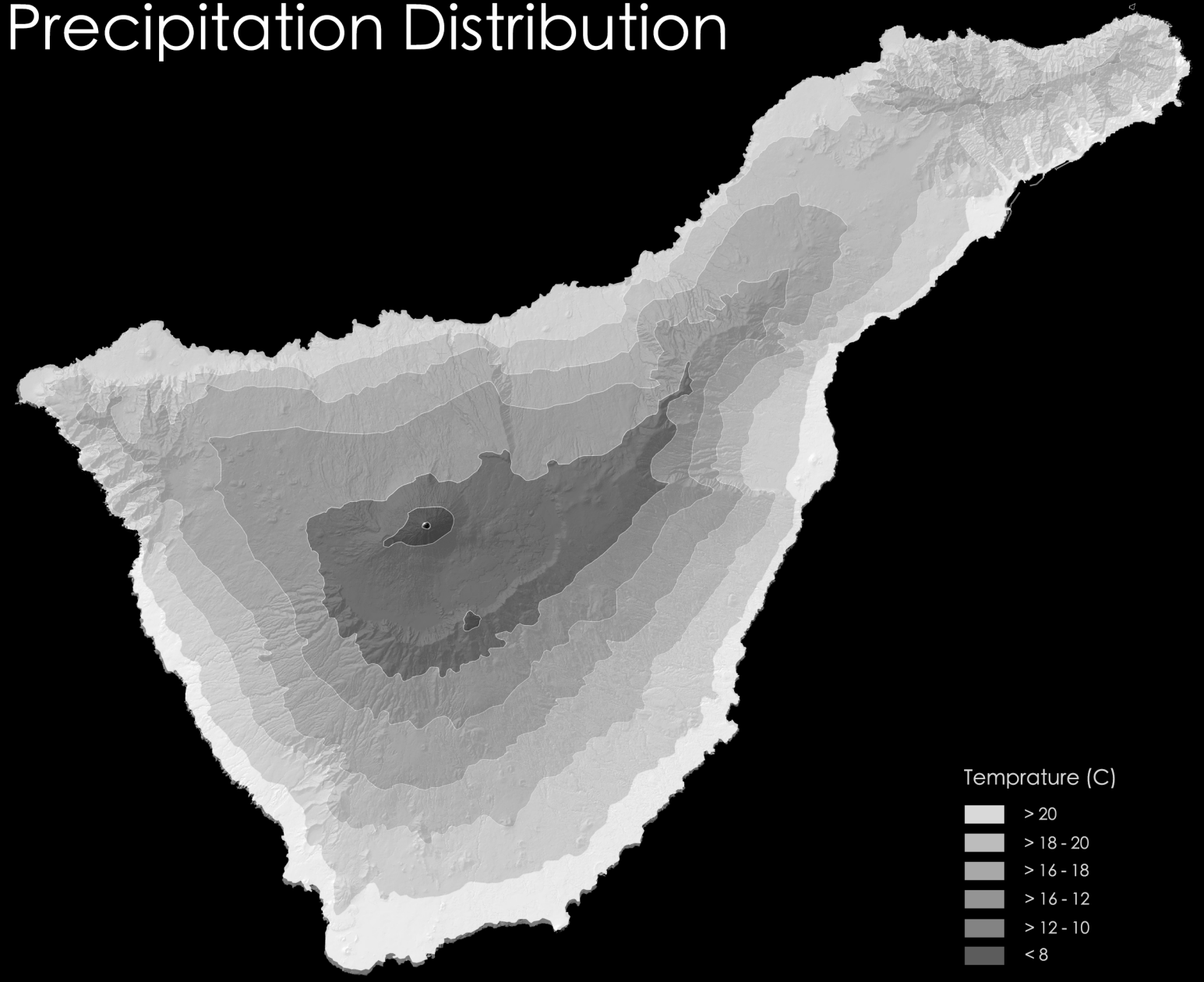
TENERIFE GEOGRAPHICAL  
 STUDIES



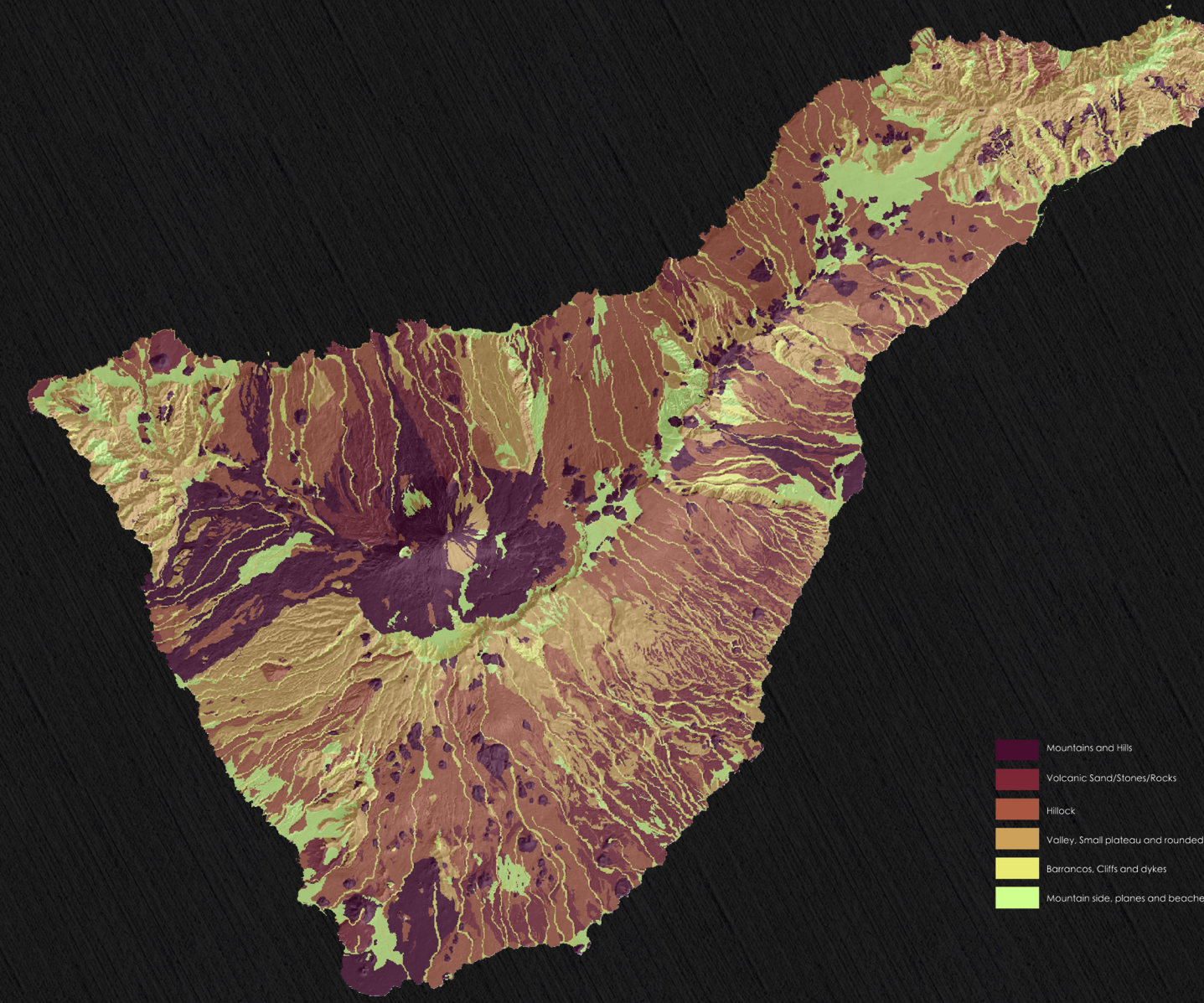
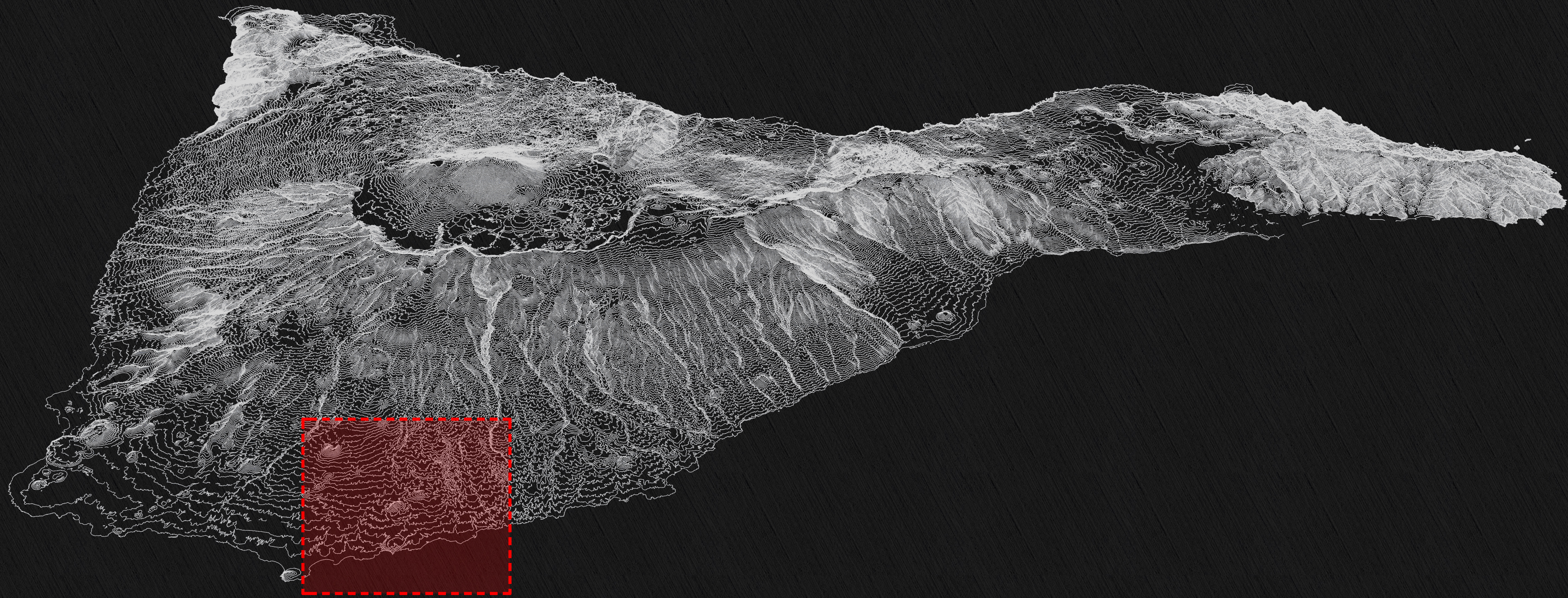
Altitudinal Zones



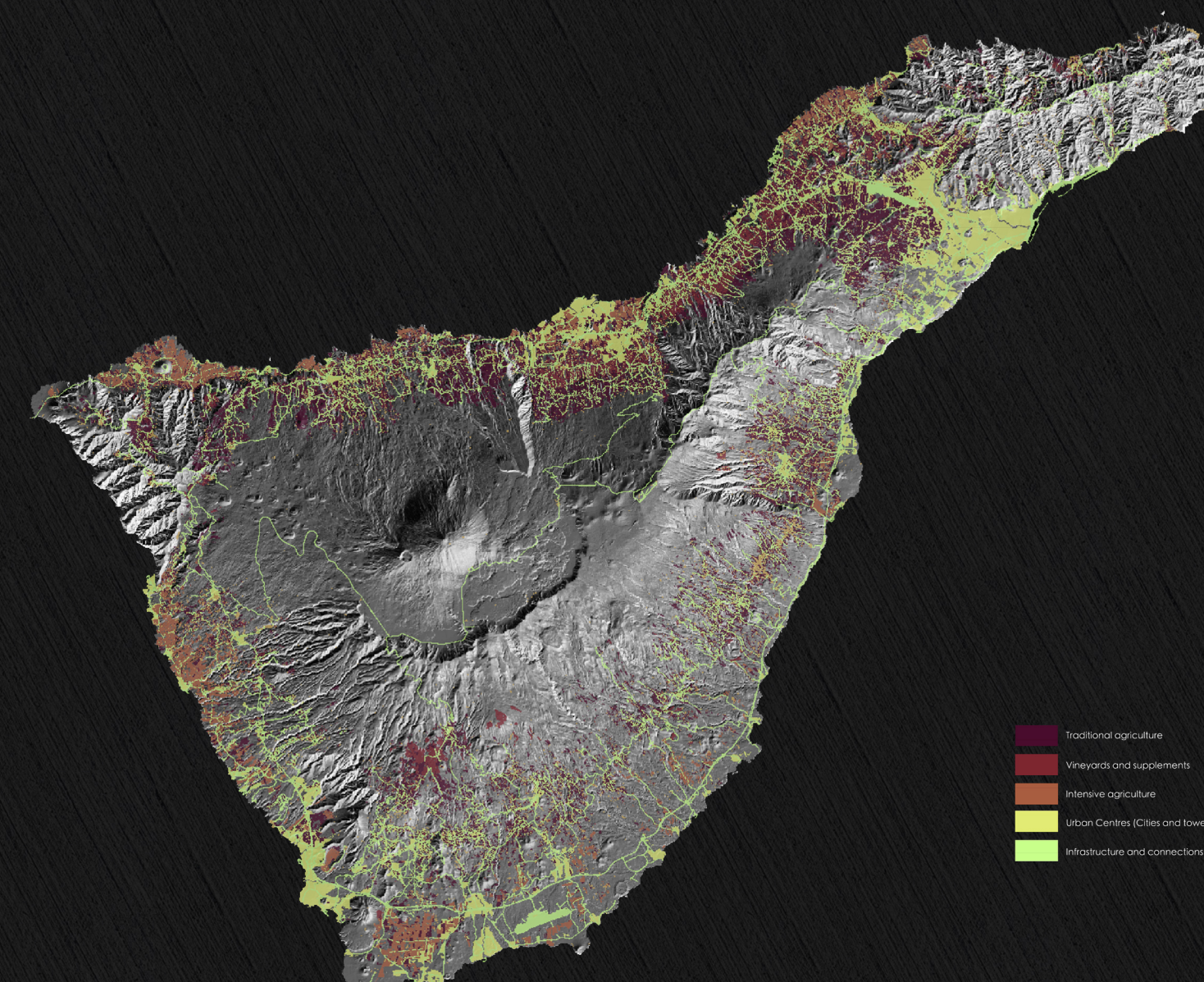
Precipitation Distribution



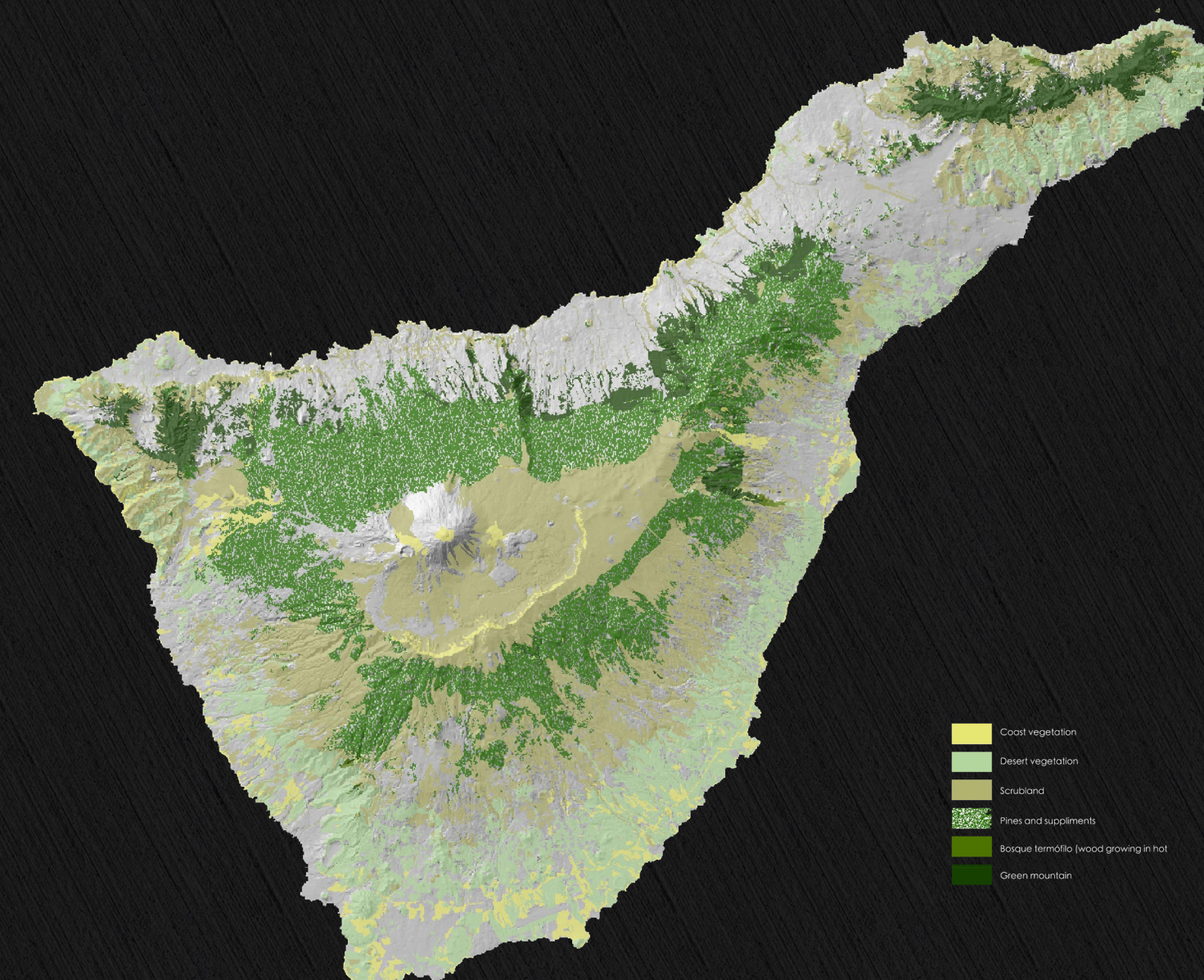
Temperature Distribution



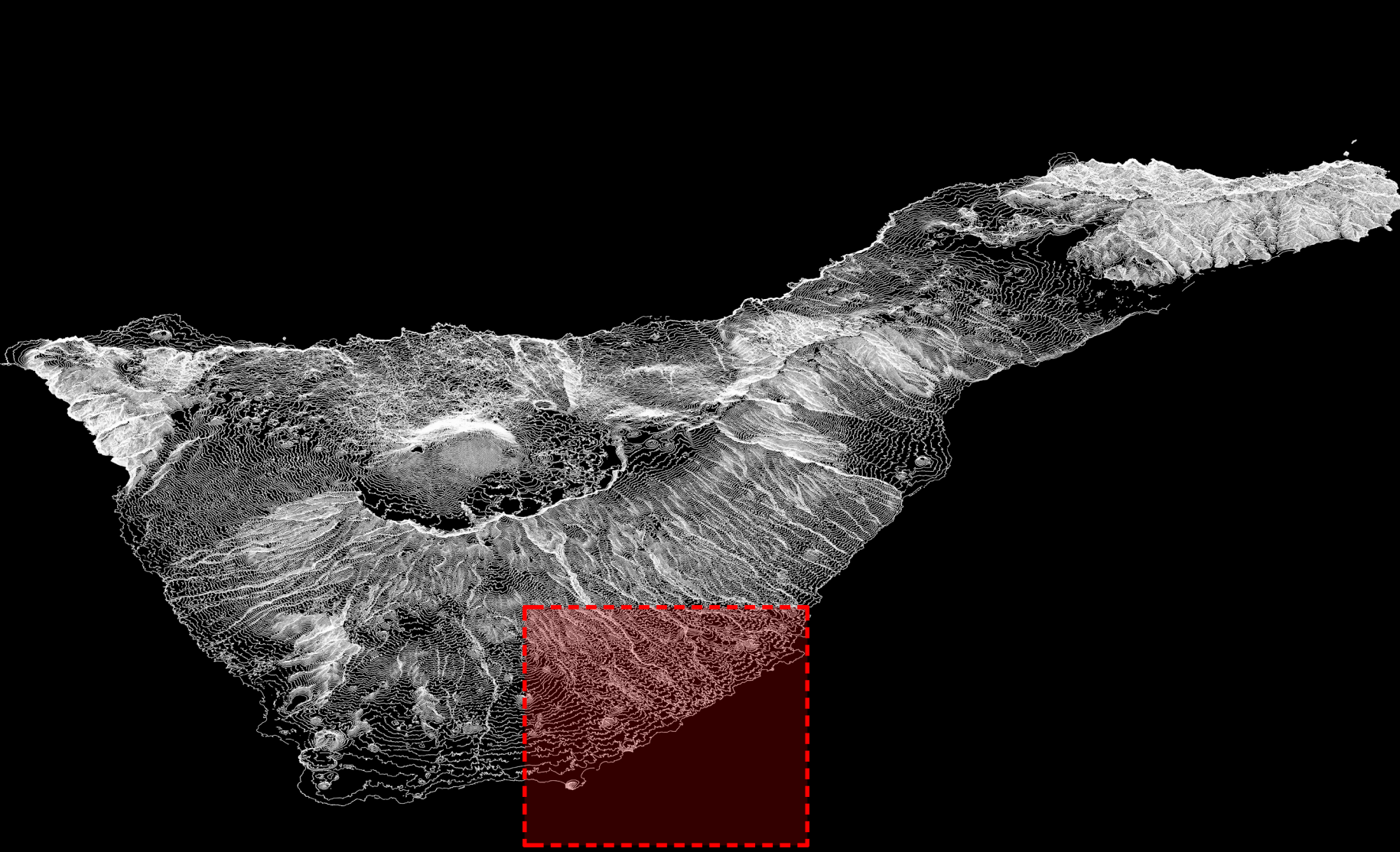
Topographic Characteristics



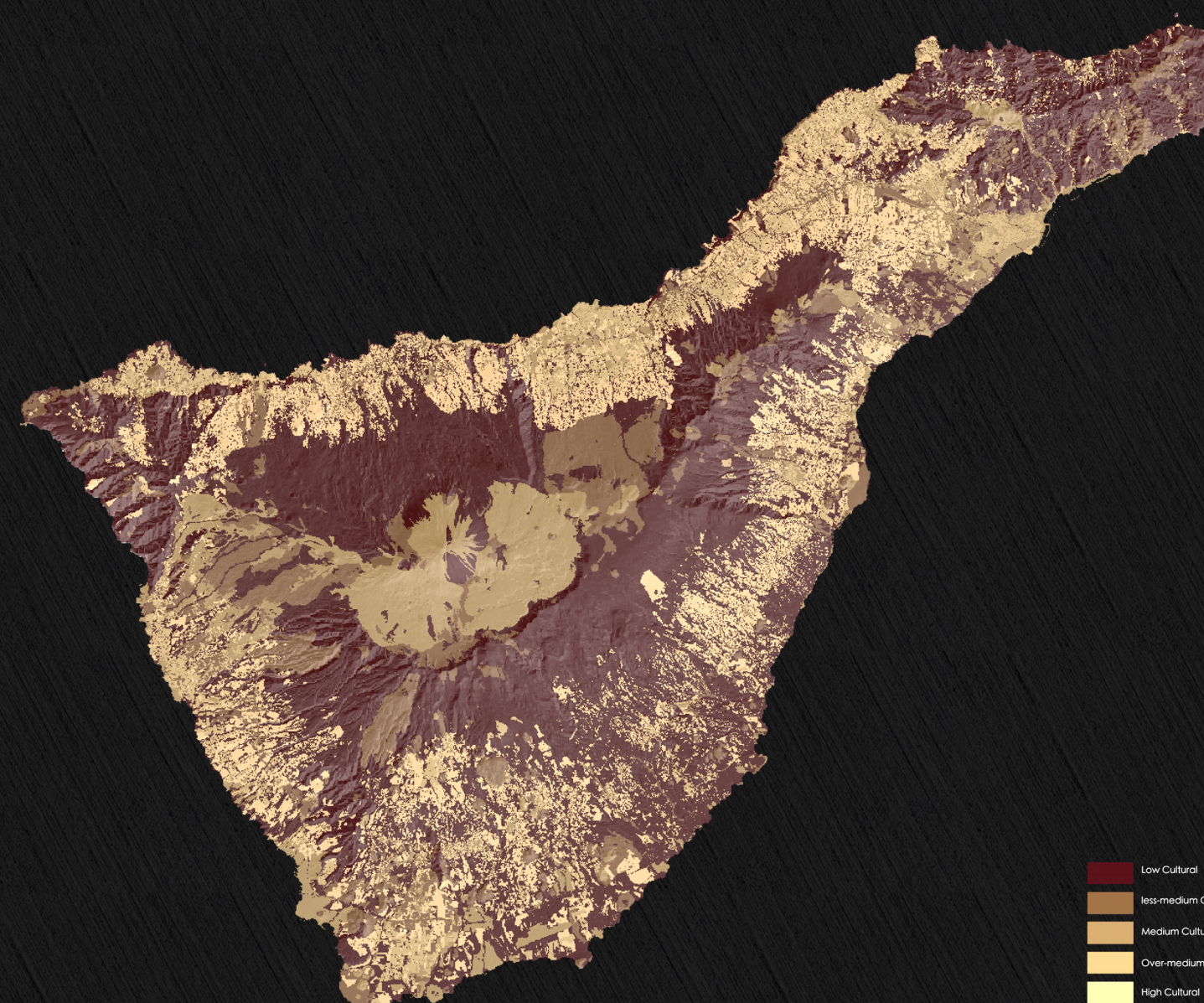
Land Use Distribution



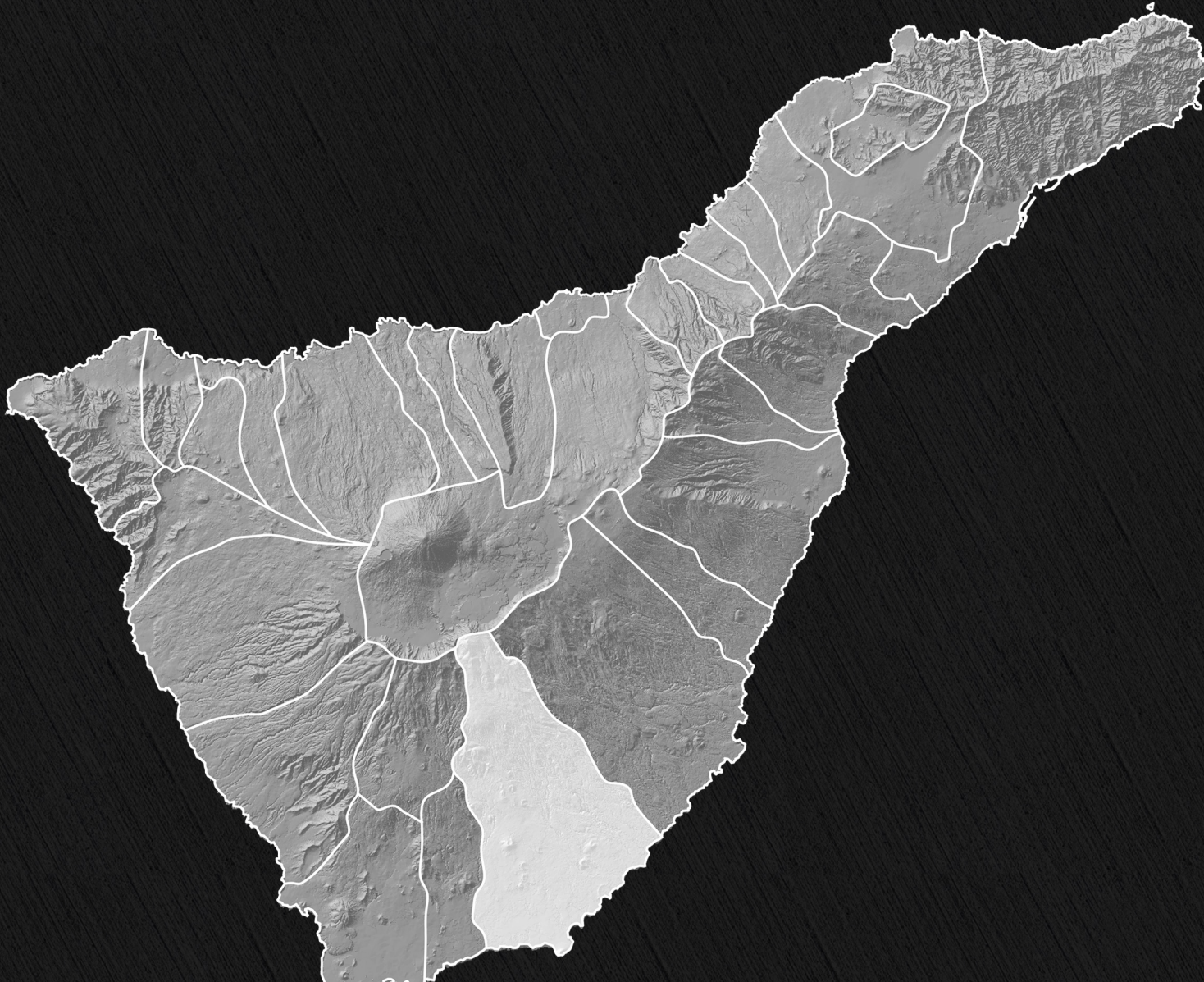
Biotic Synthesis (Natural vegetation)



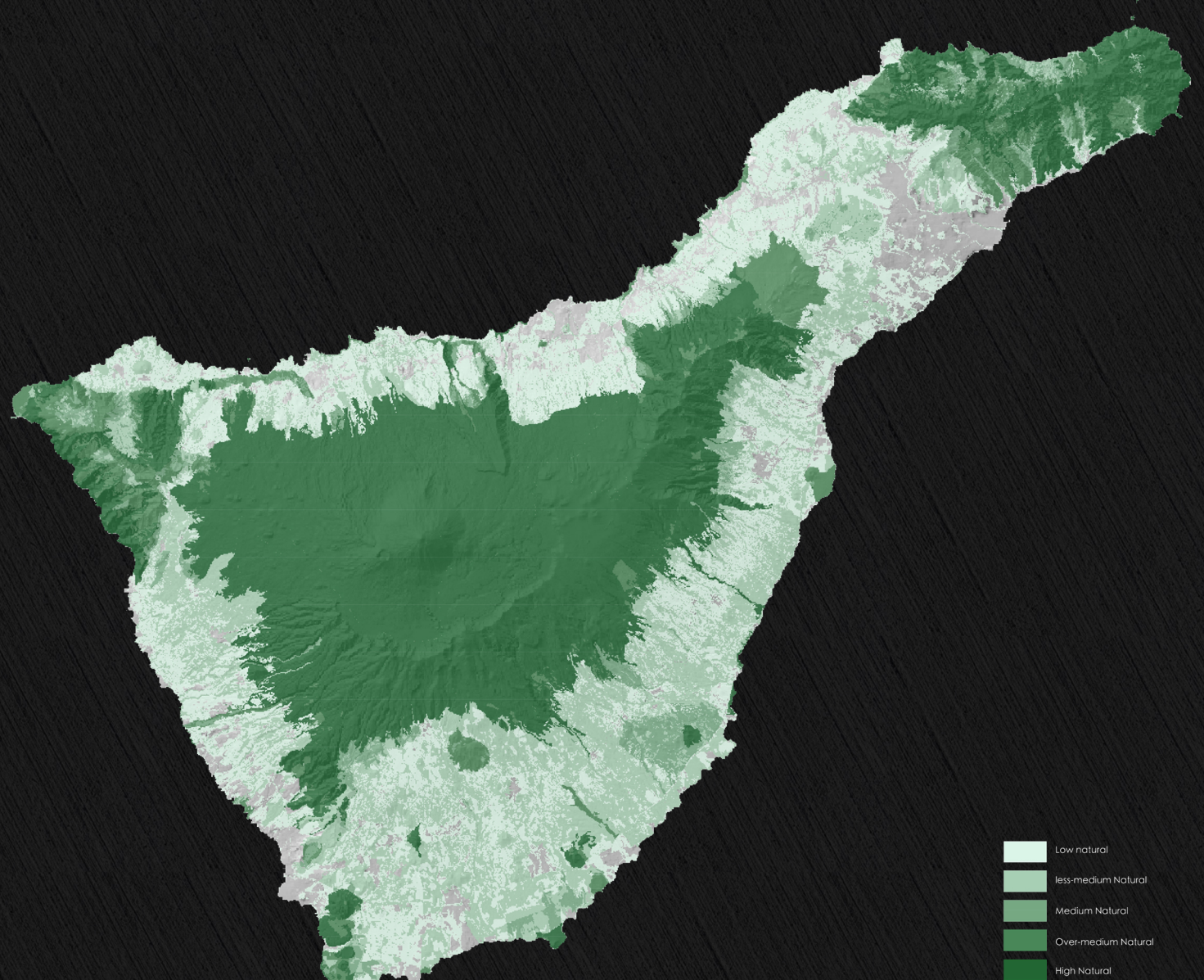
Island Perspective



Cultural Evaluation Synthesis



Granadilla De Abona



Environmental Evaluation Synthesis

