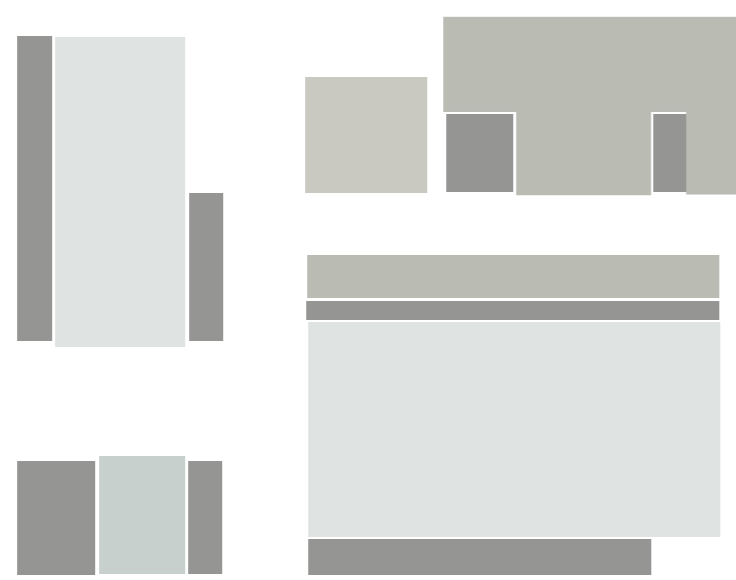
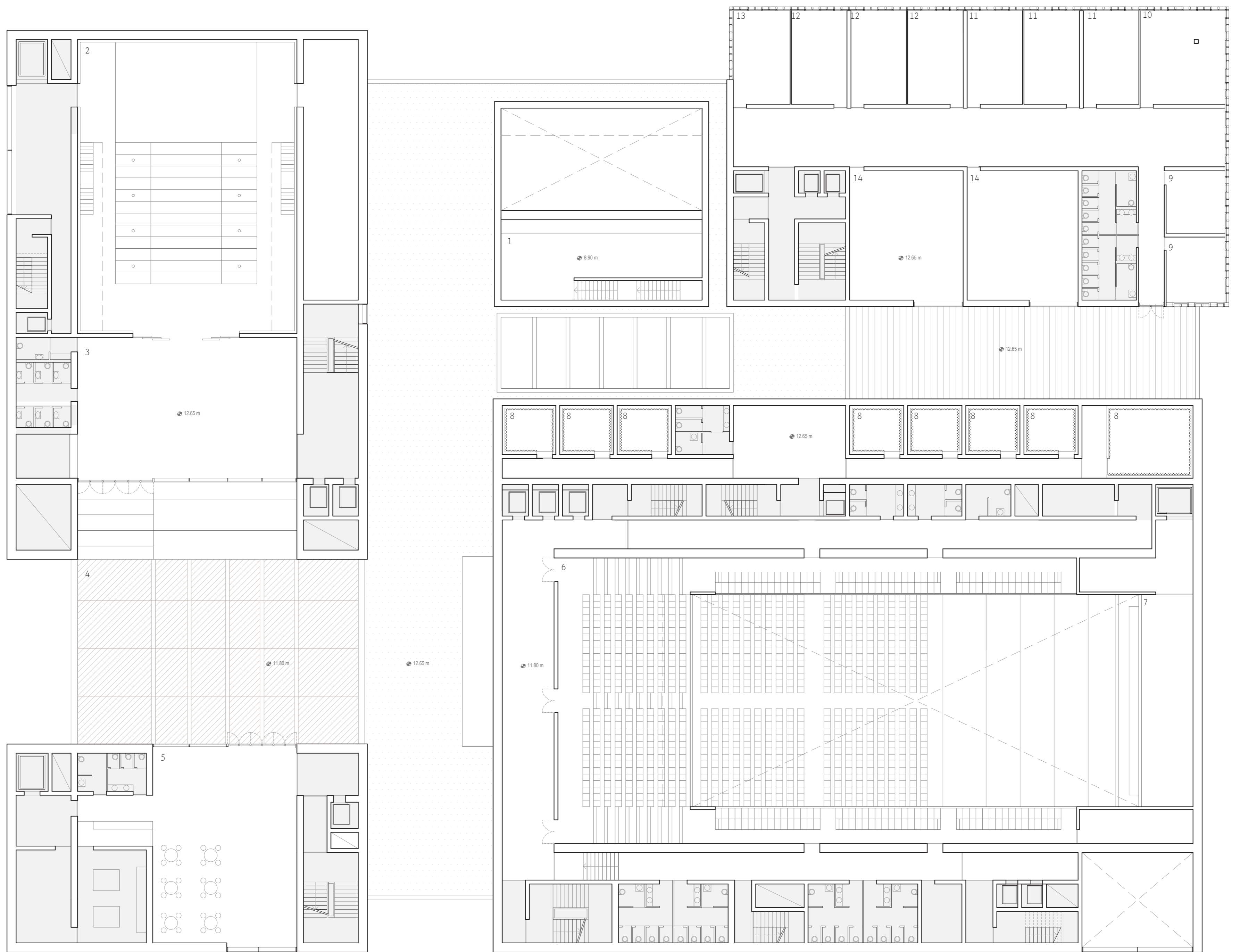
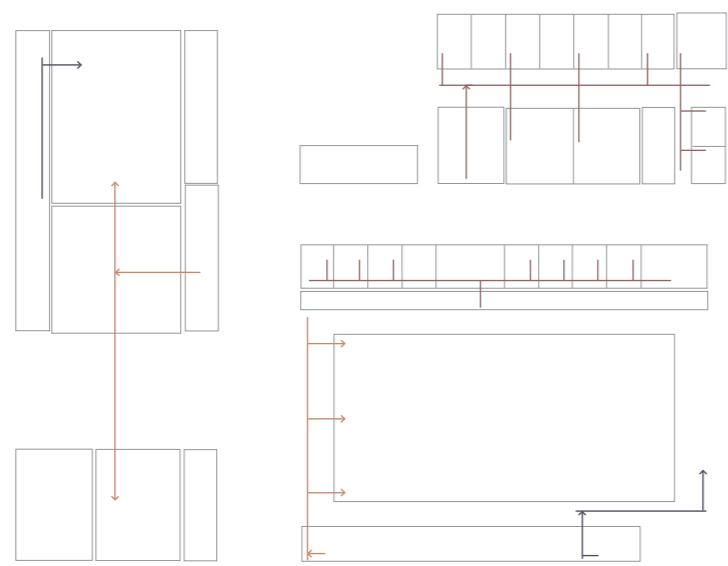


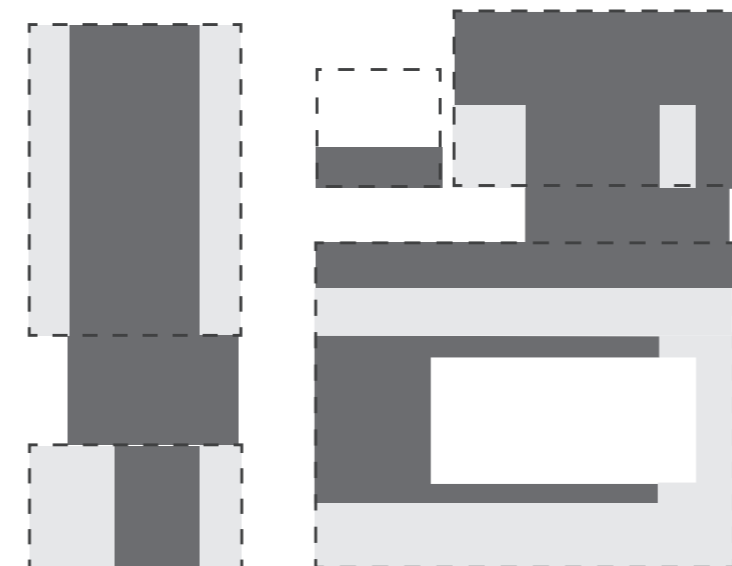
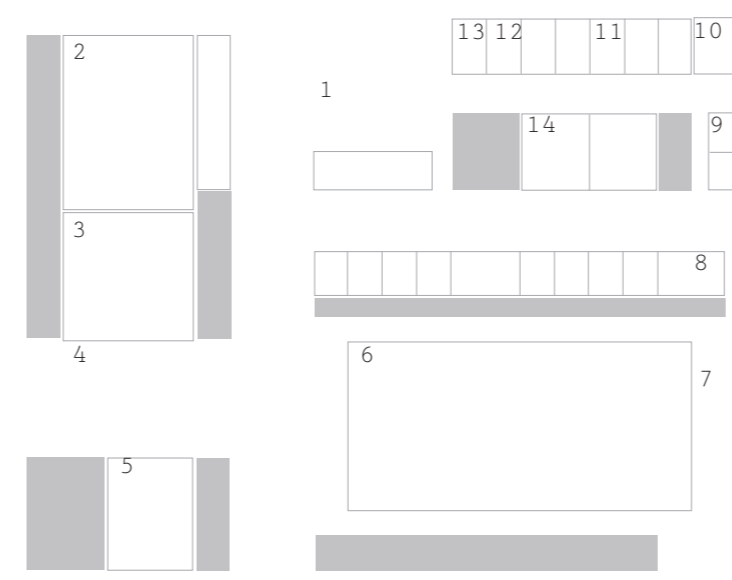
1:200



Sala
Bar/ristorante
Scuola di musica
Sala espositiva
Sala conferenze



Percorso spettatori/
visitatori
Percorso artisti
Percorso studenti



1	Spazio espositivo	225 mq
2	Sala performance	360 mq
3	Foyer sala performance	180 mq
4	Terrazza	302 mq
5	Ristorante	230 mq
6	Primo piano auditorium	374 mq
7	Locale organo	64 mq
8	Sale di registrazione	7 x 12 mq + 32 mq
9	Aule per lo studio individuale	2 x 22 mq
10	Aula clarinetto/oboe/fagotto	47 mq
11	Aule archi	3 x 30 mq
12	Aule pianoforte	3 x 30 mq
13	Aula chitarra	30 mq
14	Aule percussioni	2 x 85 mq

Circolazione pubblica

SEZIONE B-B'

