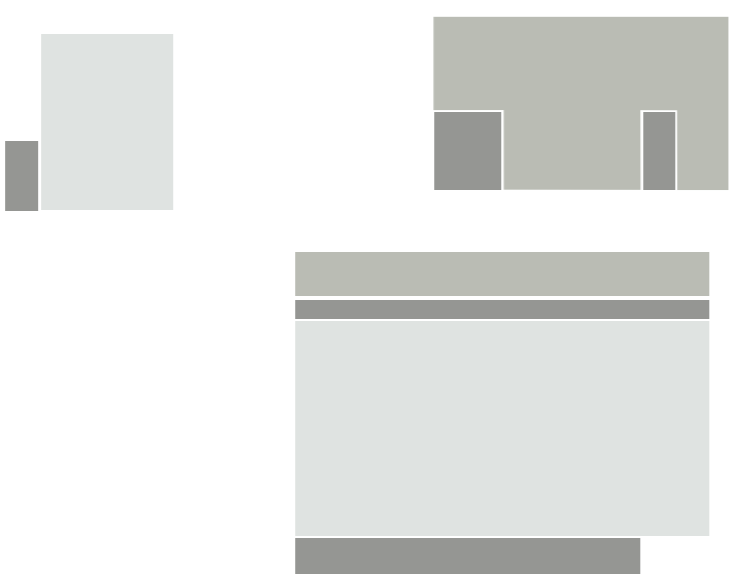
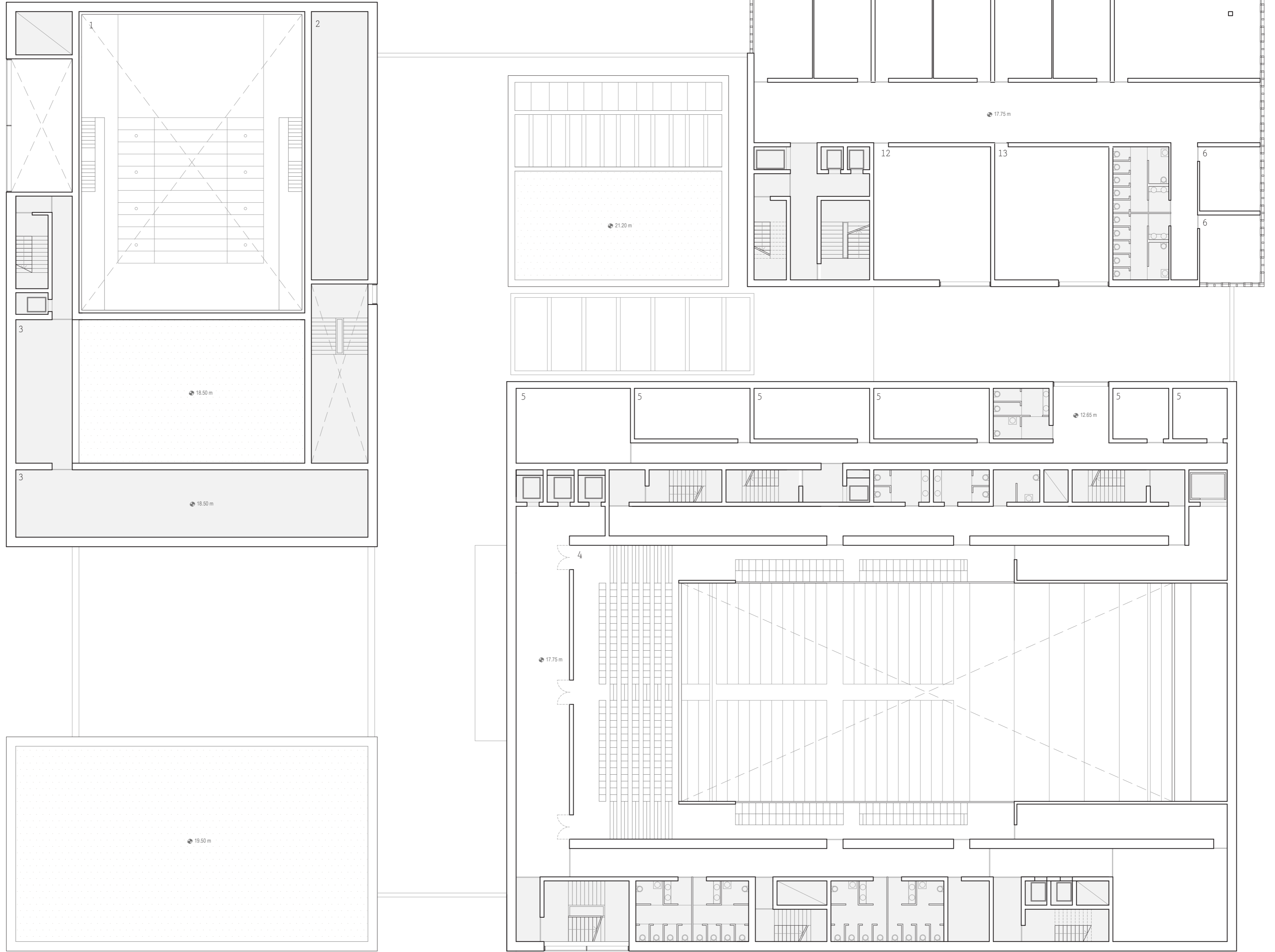
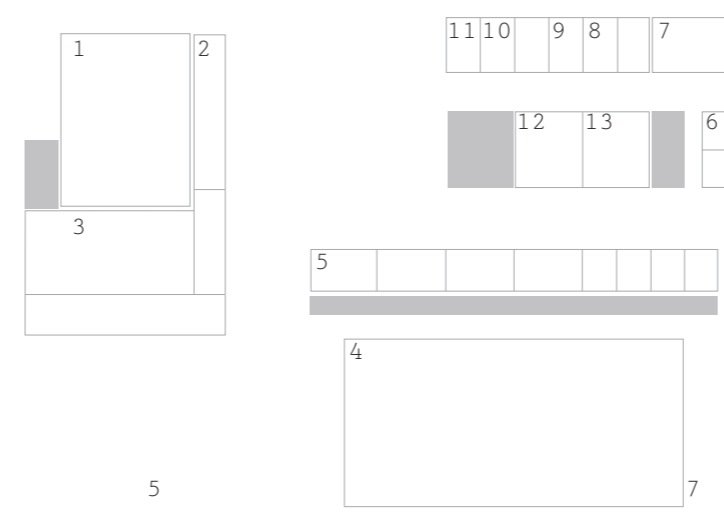


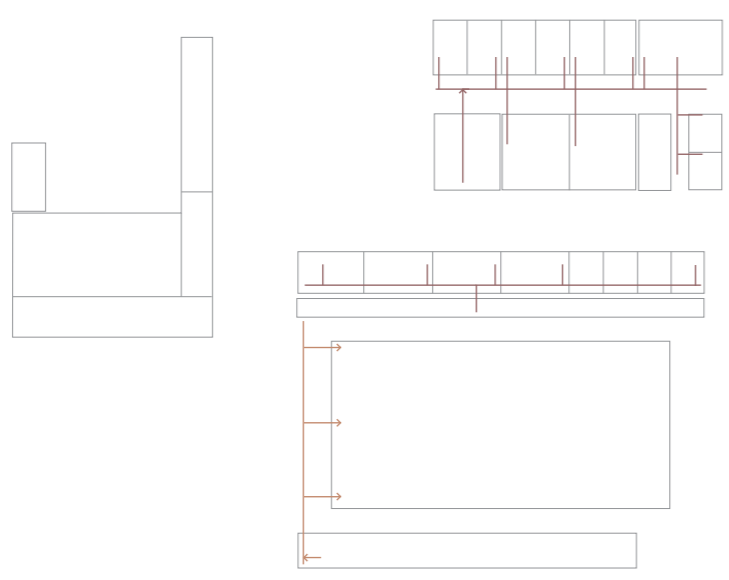
1:200



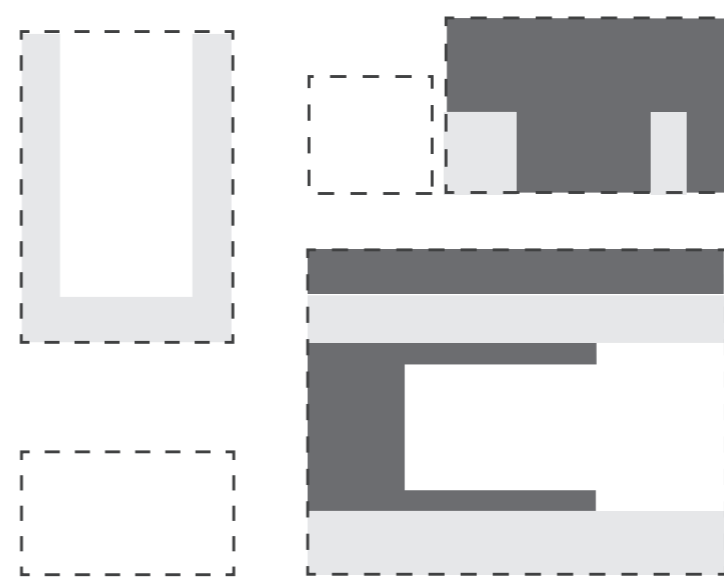
Sale  
Scuola di musica



1	Sala performance	360 mq
2	Locali tecnici sala performance	83 mq
3	Locali tecnici	tot 174 mq
4	Secondo piano auditorium	302 mq
5	Sale di registrazione	32 mq + 3 x 22 mq + 2 x 12 mq
6	Aule per lo studio individuale	2 x 22 mq
7	Aula ensemble di fiati	77 mq
8	Aule ottoni	2 x 30 mq
9	Aula sassofono	30 mq
10	Aule flauto dolce/flauto traverso	2 x 30 mq
11	Aula arpa	30 mq
12	Aula canto	85 mq
13	Aula ensemble strumentale	85 mq



Percorso spettatori/  
visitatori  
Percorso artisti  
Percorso studenti



Circolazione pubblica

SEZIONE C-C'

