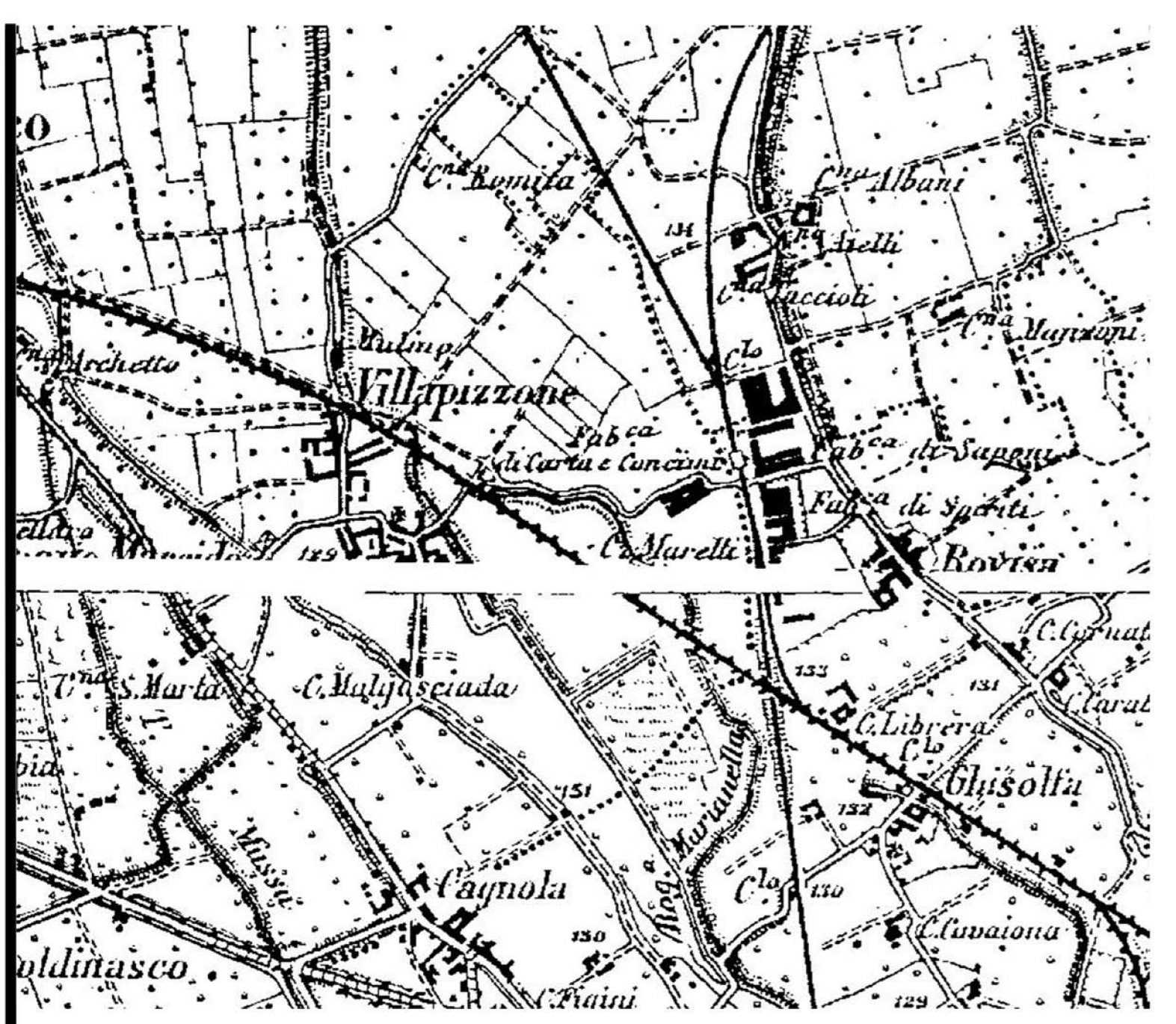


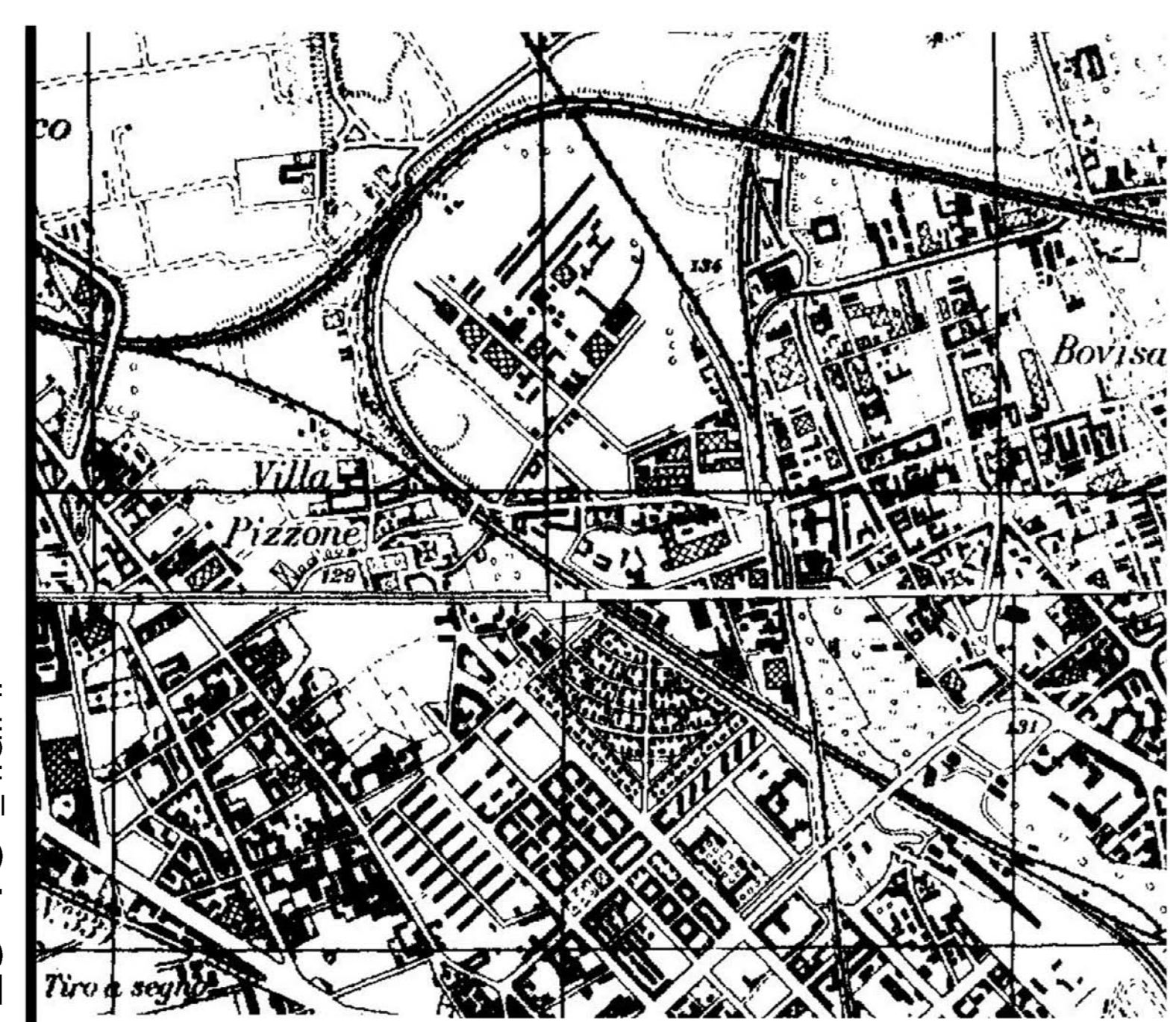
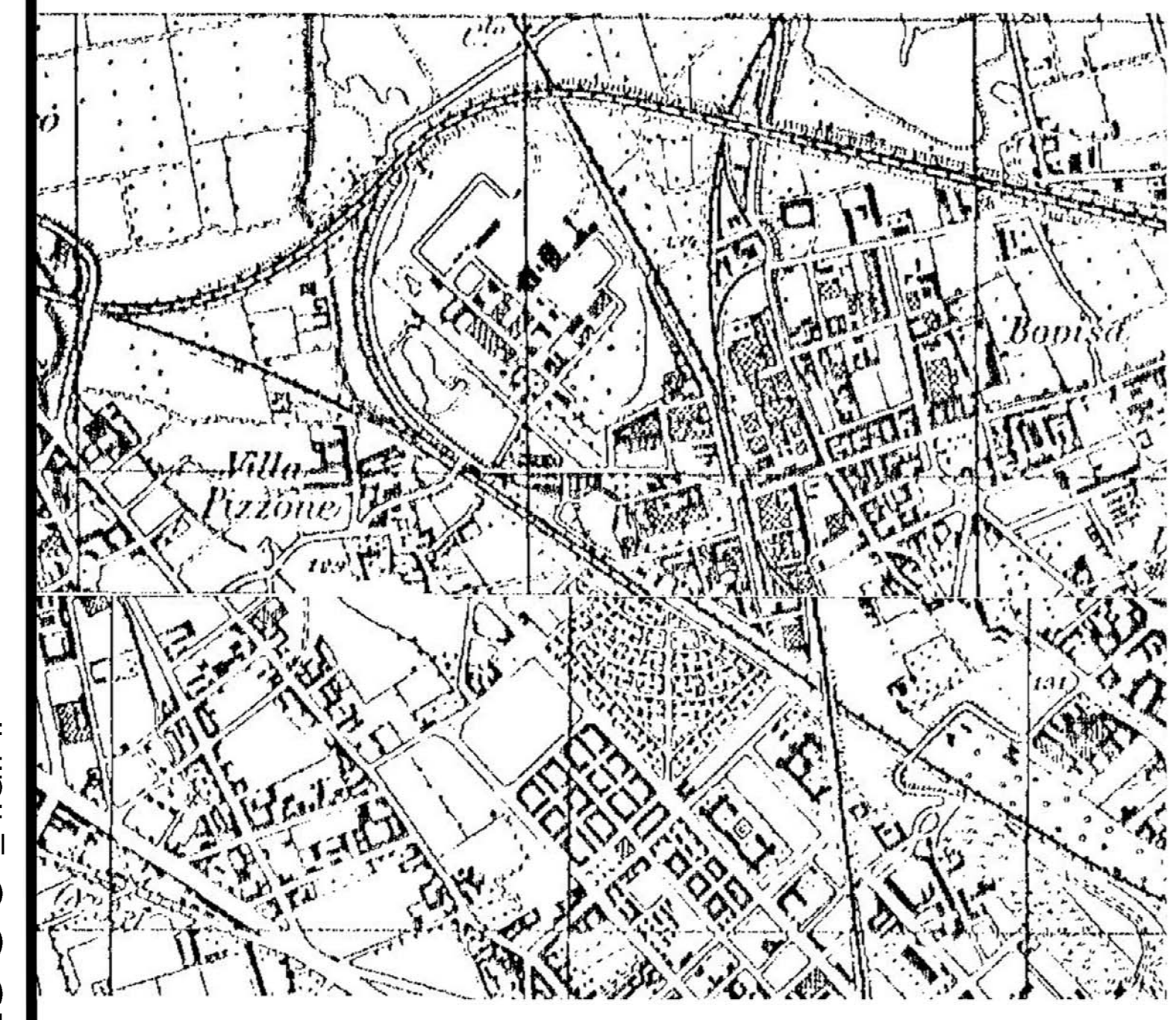
1878 - CARTA DI MANOVRA

1888 - I.G.M.



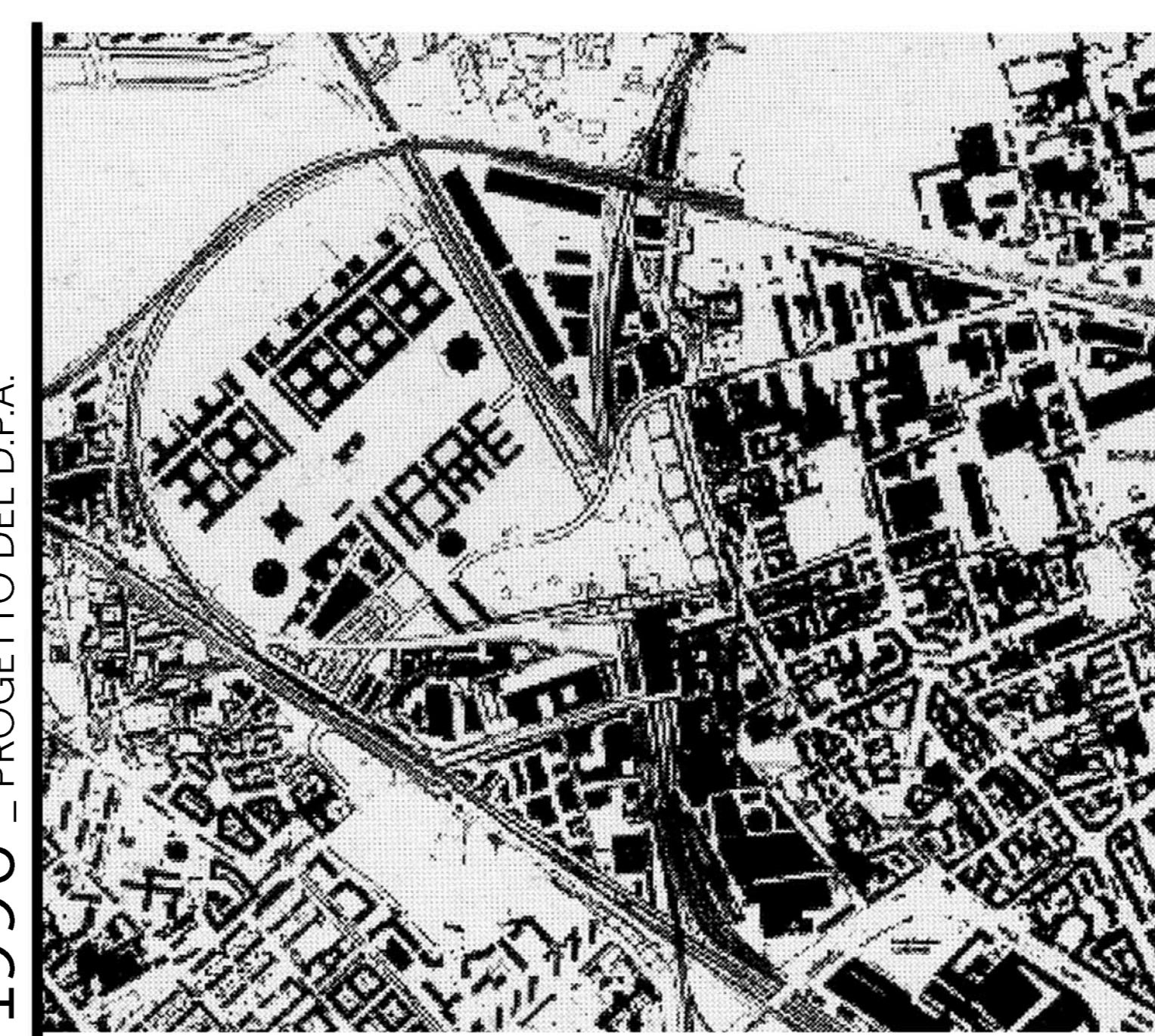
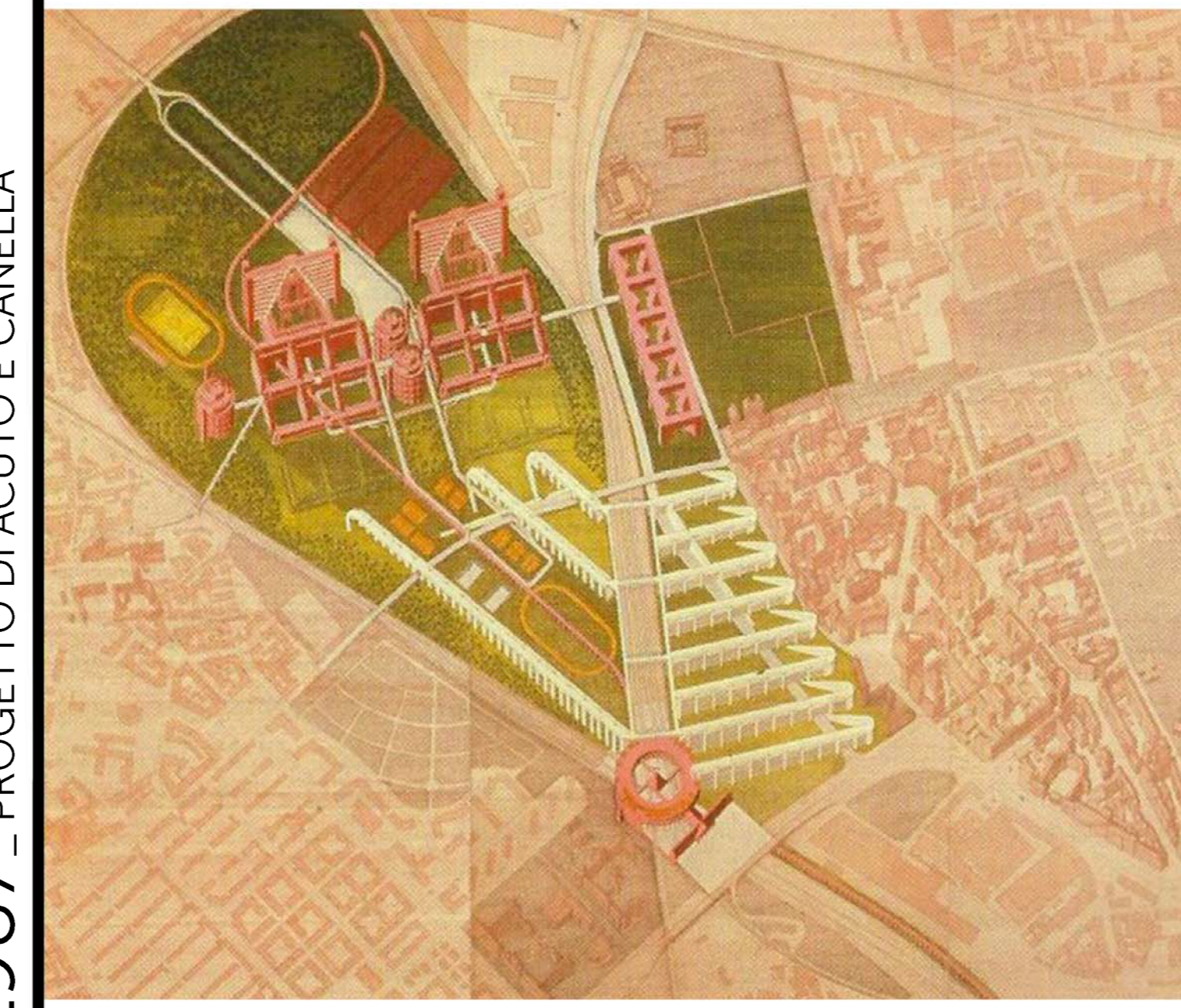
1936 - I.G.M.

1943 - I.G.M.



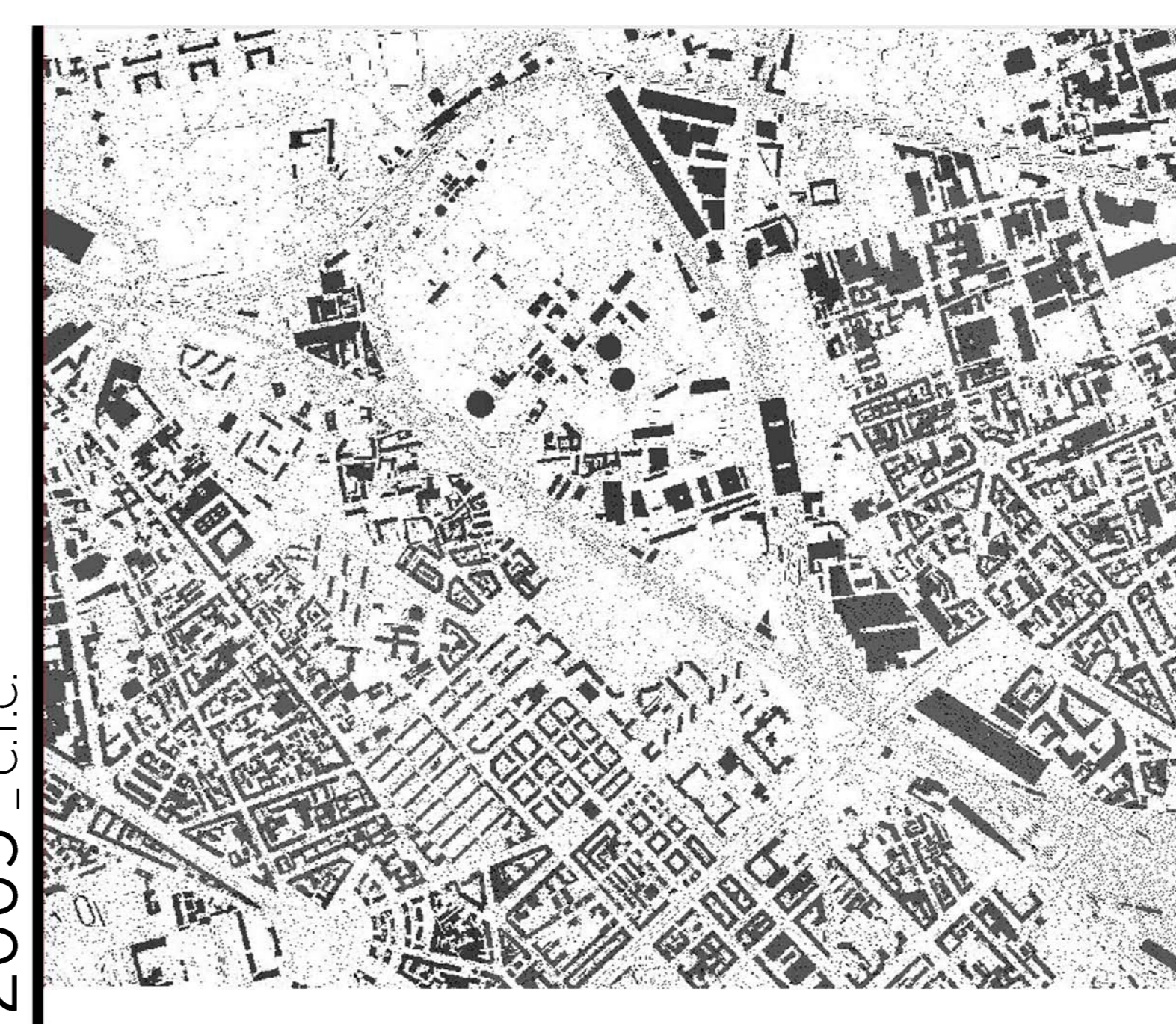
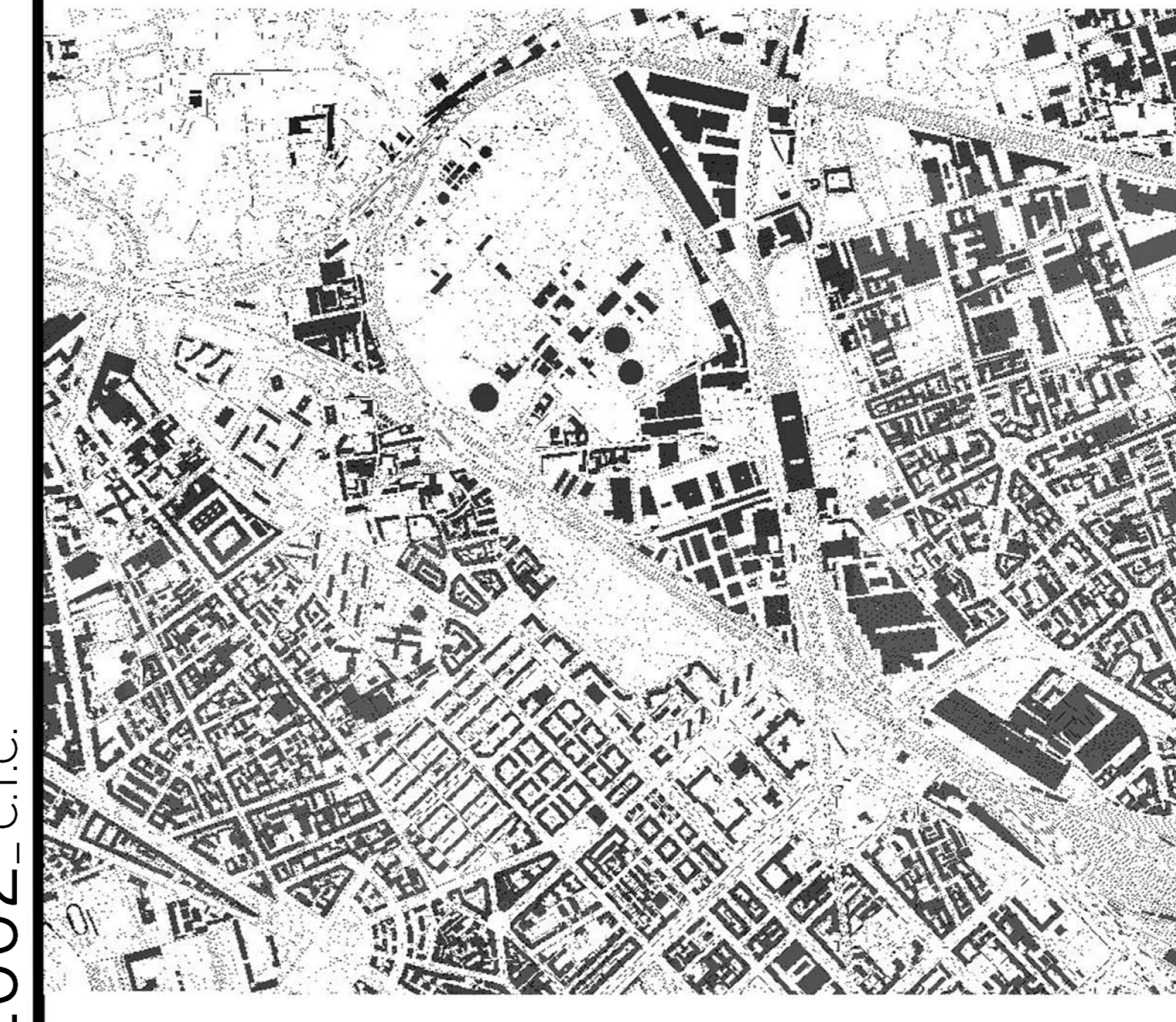
1987 - PROGETTO DI ACUTO E CANELLA

1990 - PROGETTO DEL D.P.A.



2002 - C.T.C.

2005 - C.T.C.

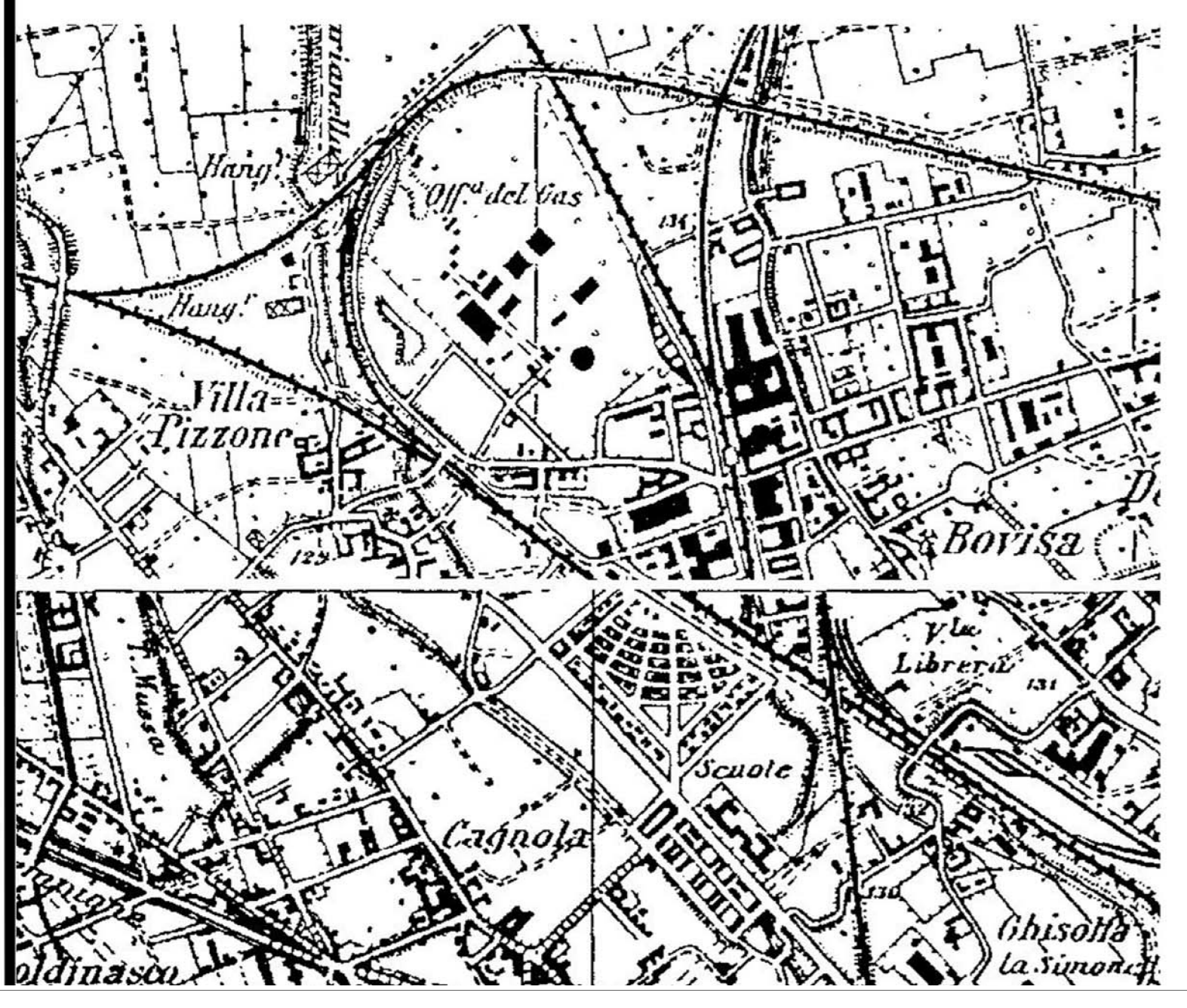
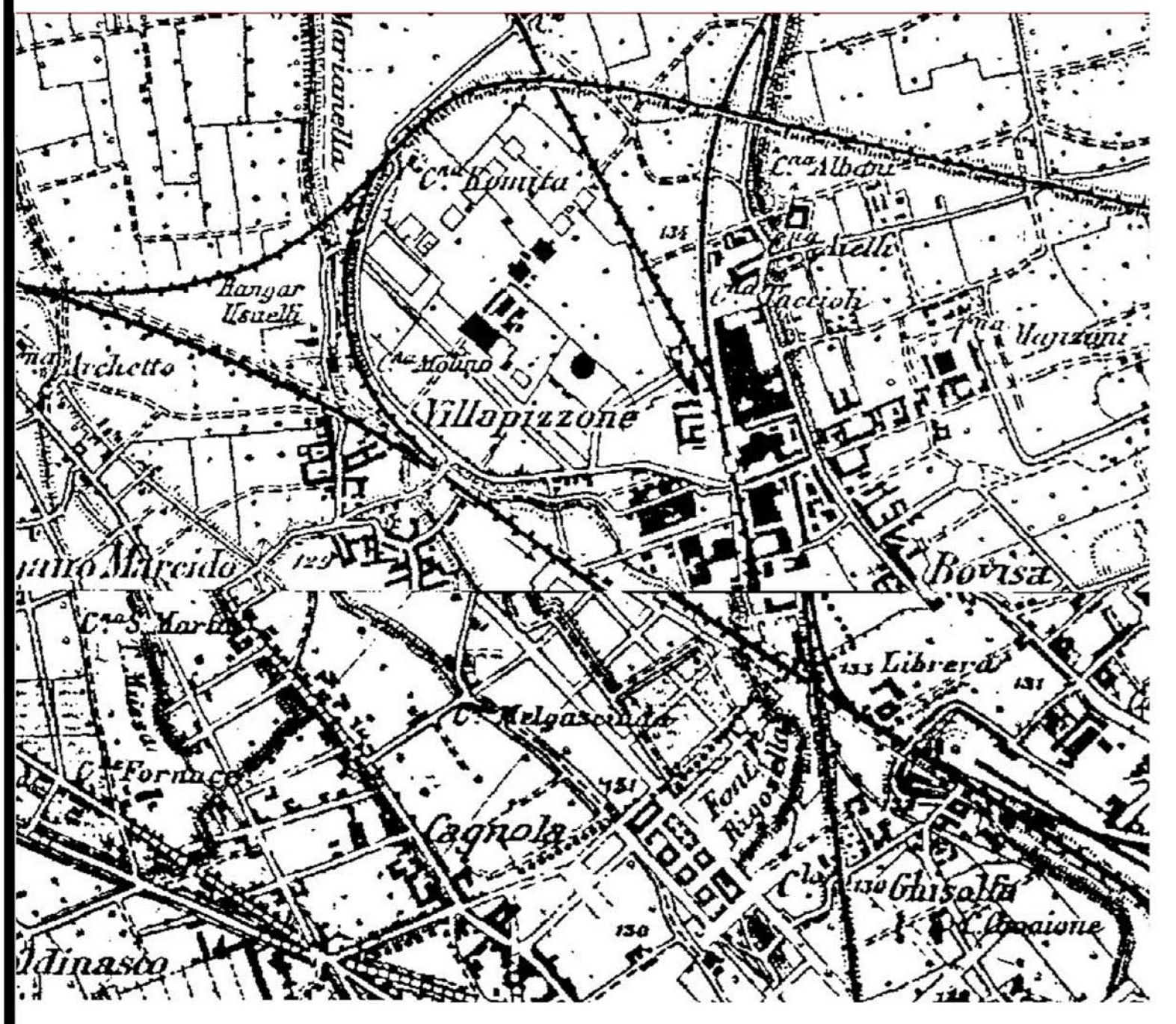


2008 - PROGETTO DI KOOLHAAS



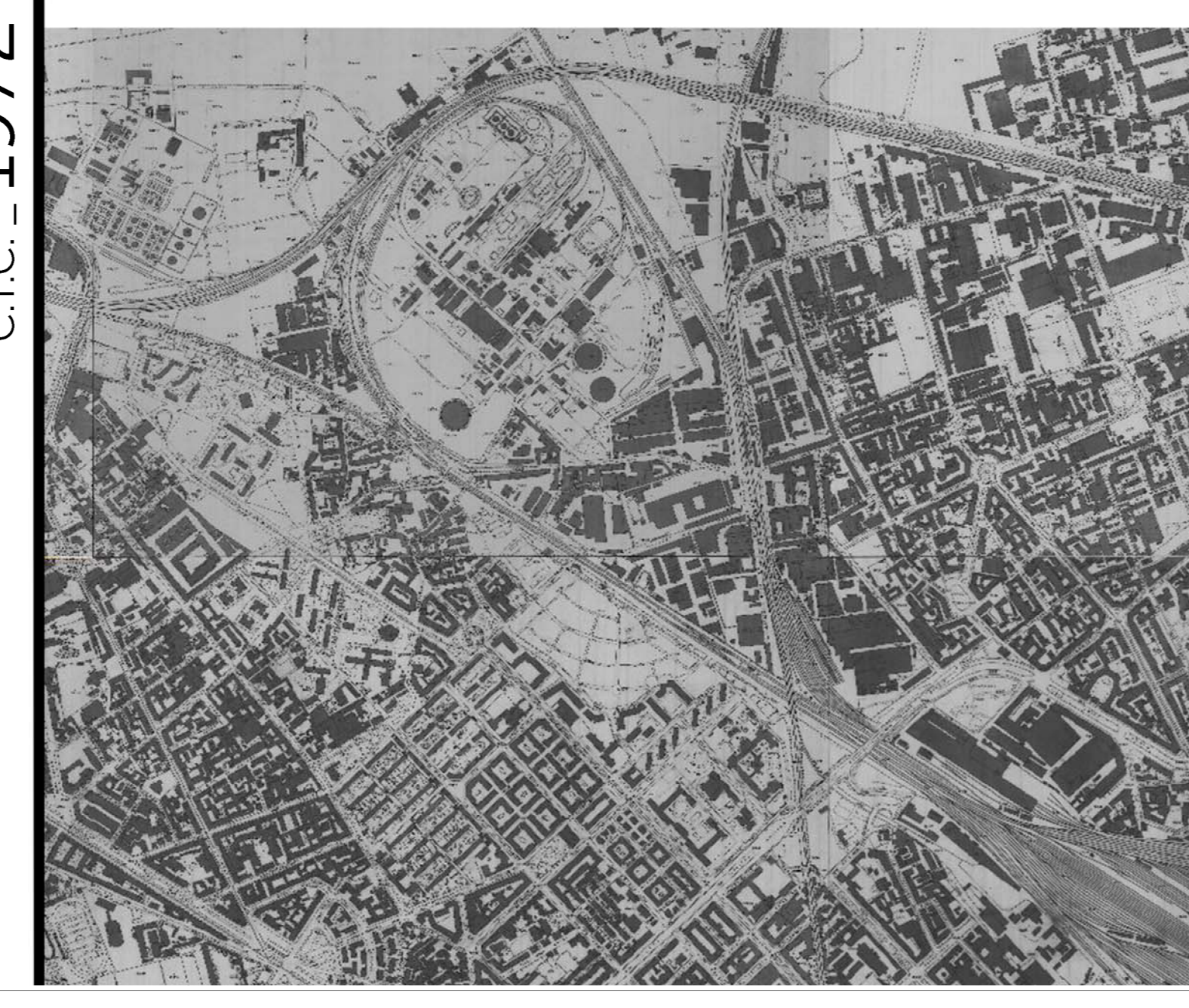
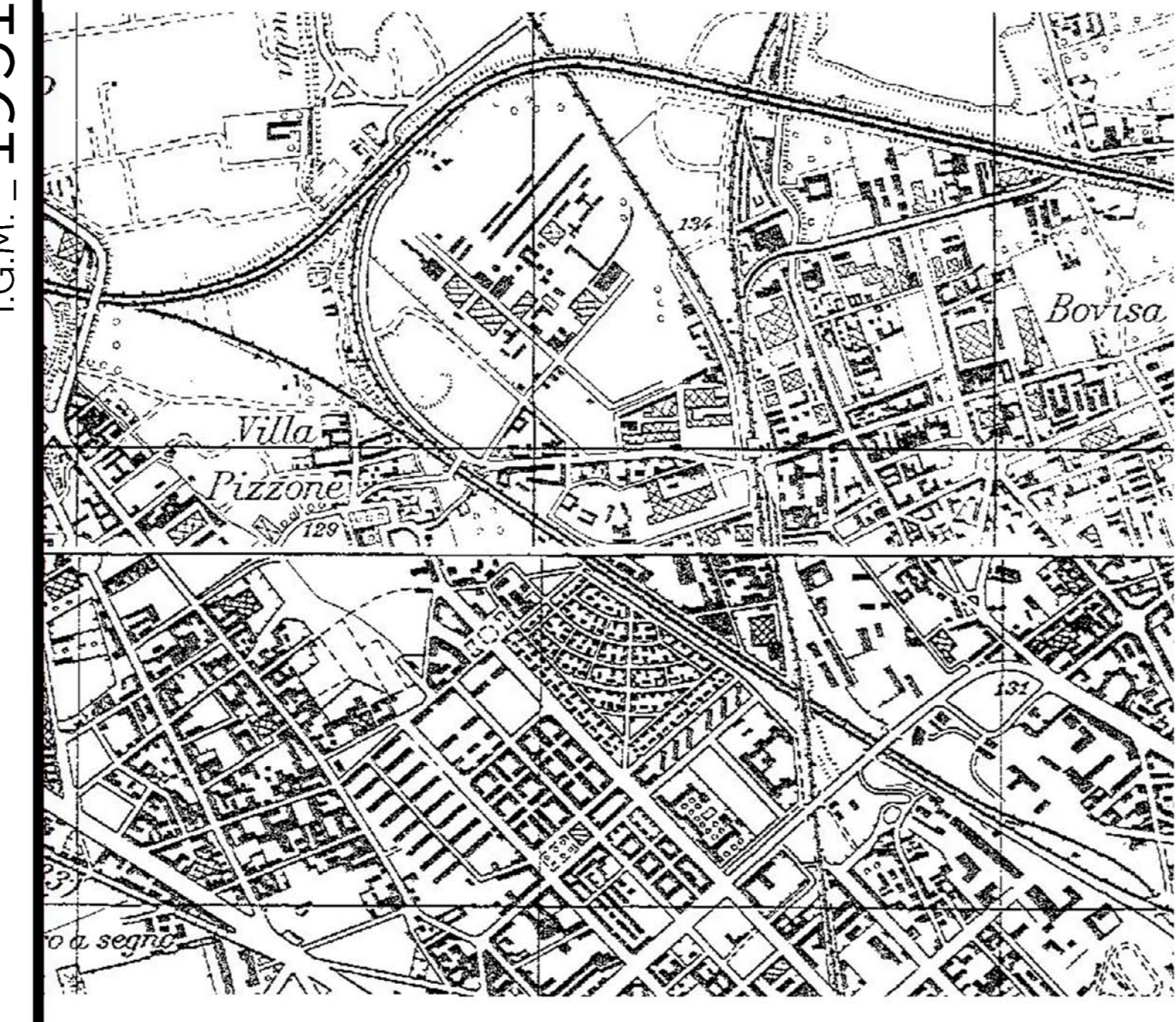
I.G.M. - 1914

I.G.M. - 1924

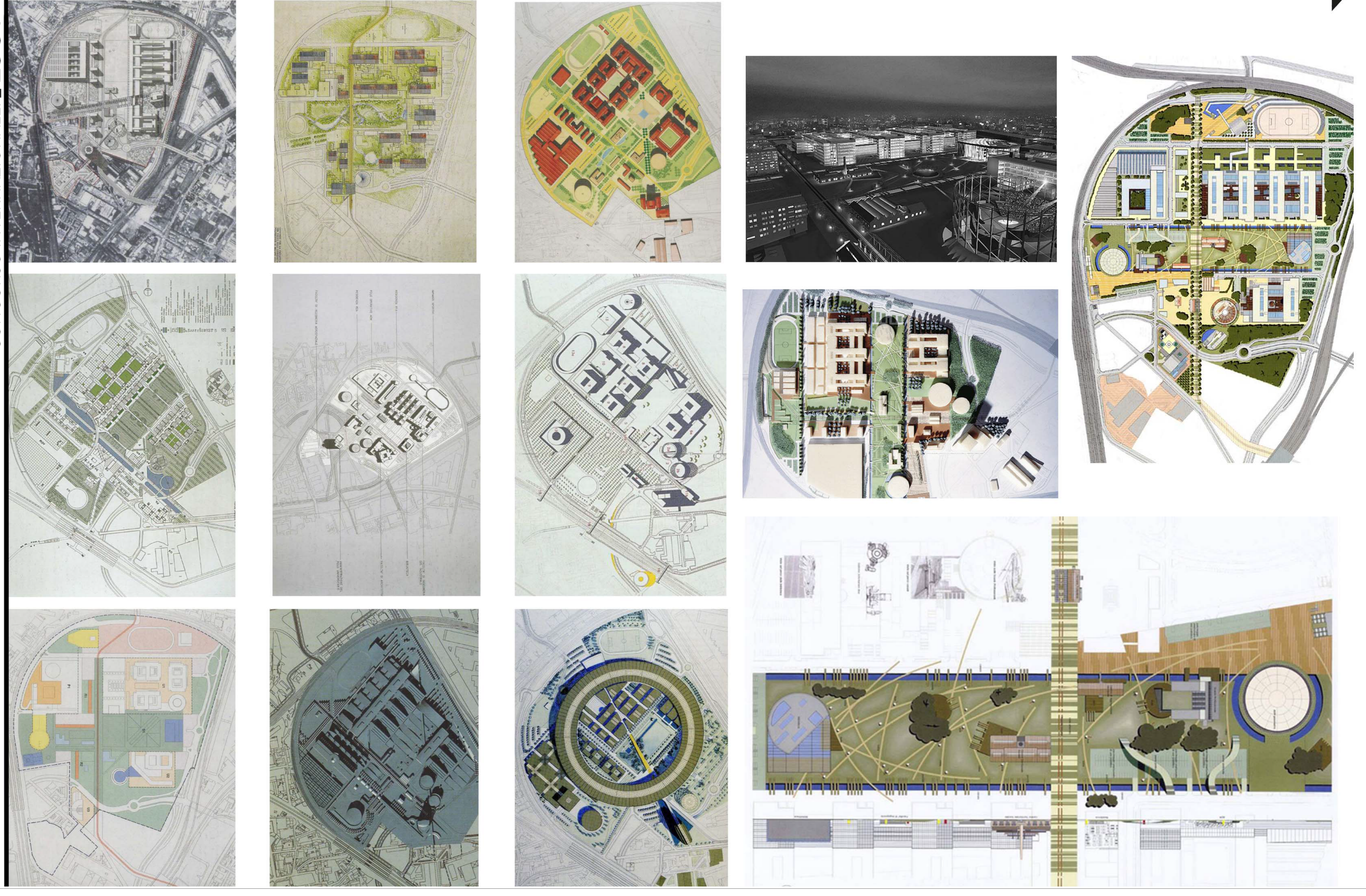


I.G.M. - 1951

C.T.C. - 1972



CONCORSO INTERNAZIONALE - 1997



UN NUOVO PIANO PER LA BOVISA
Progetto per l'ex area industriale de "La Goccia"
Soglie Storiche