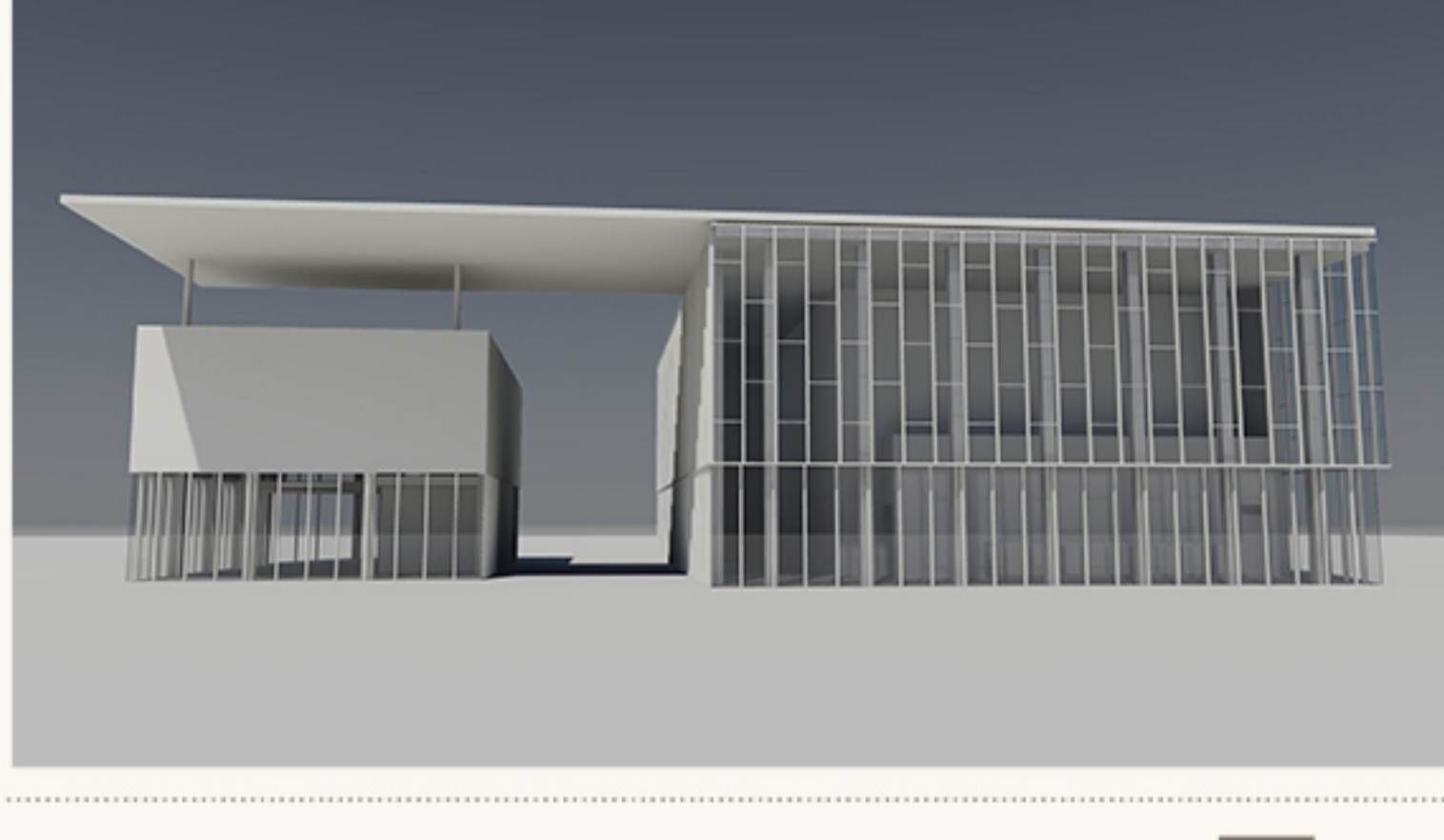
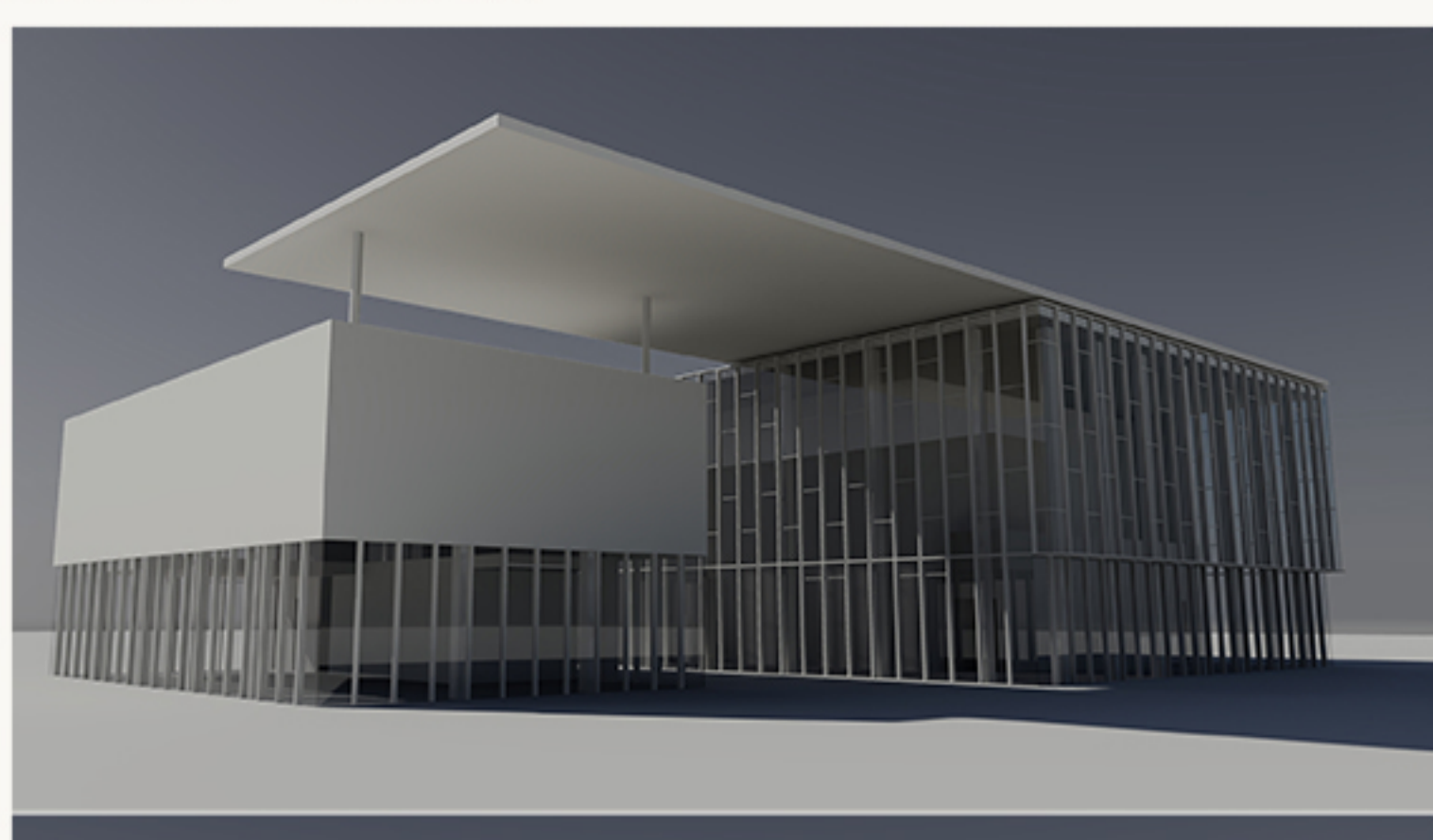
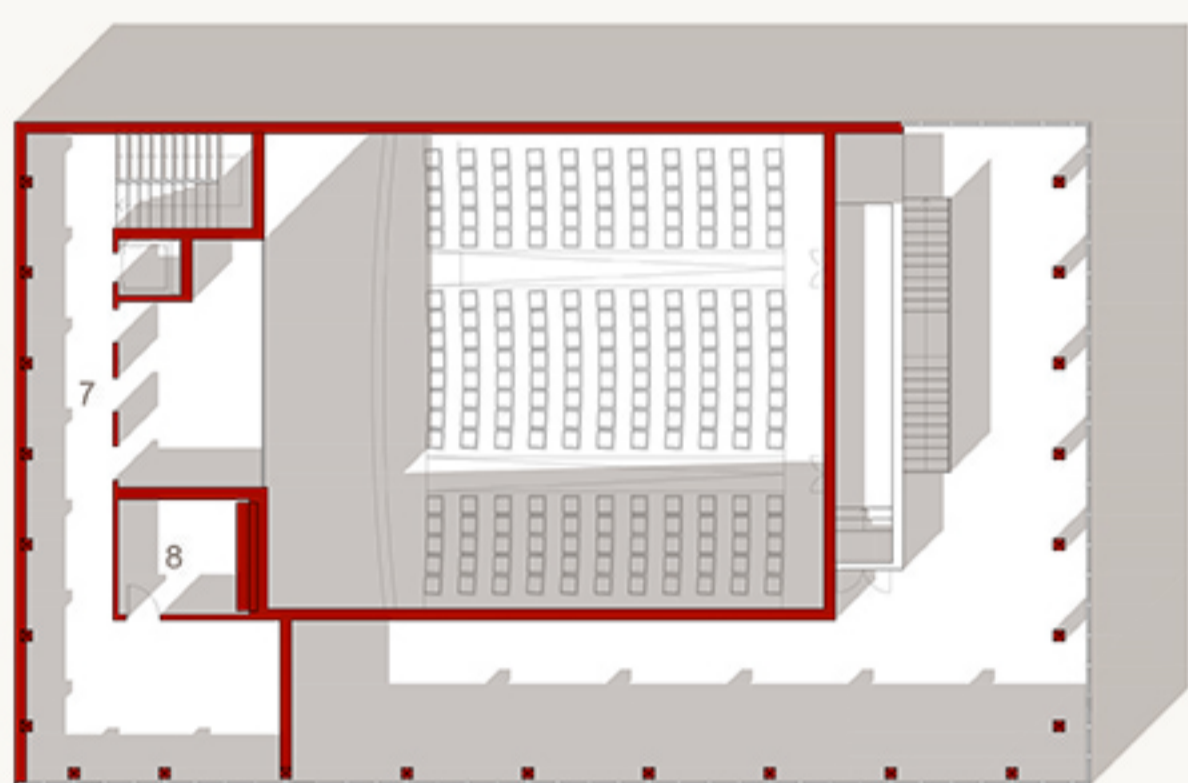
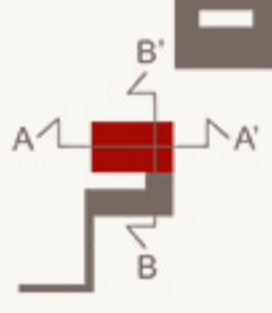


# CINEMA - TEATRO



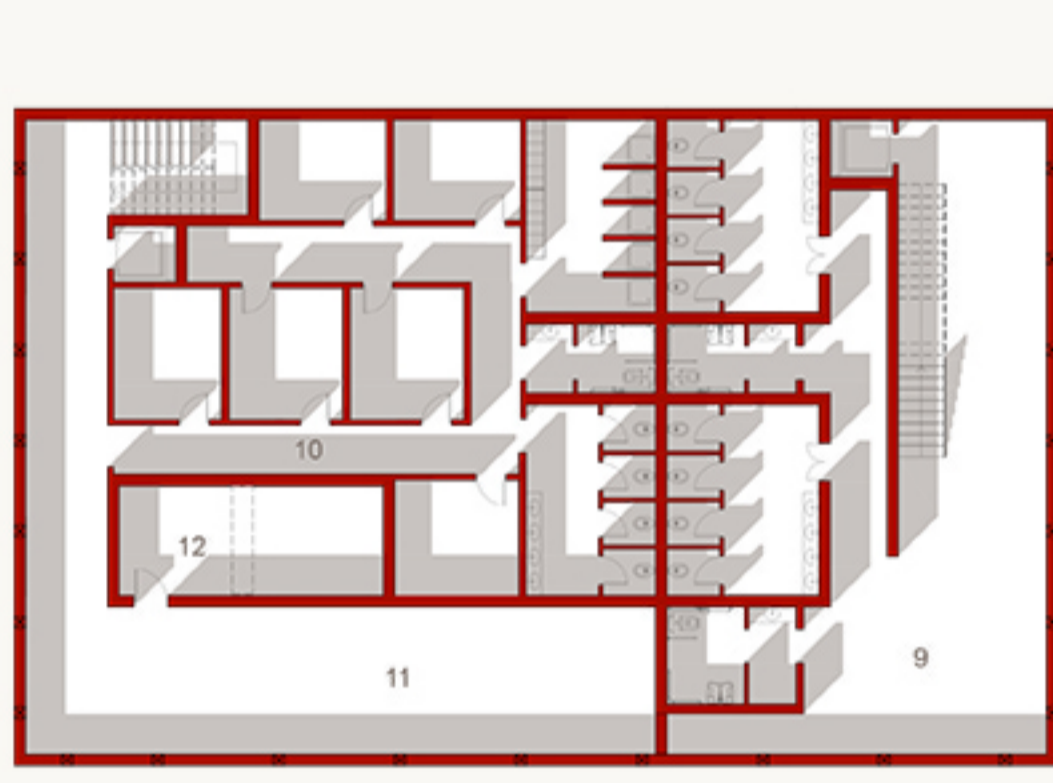
## PIANTA + 0.0

- 1. Foyer
- 2. Caffetteria
- 3. Platea
- 4. Palcoscenico
- 5. Quinte
- 6. Locale tecnico



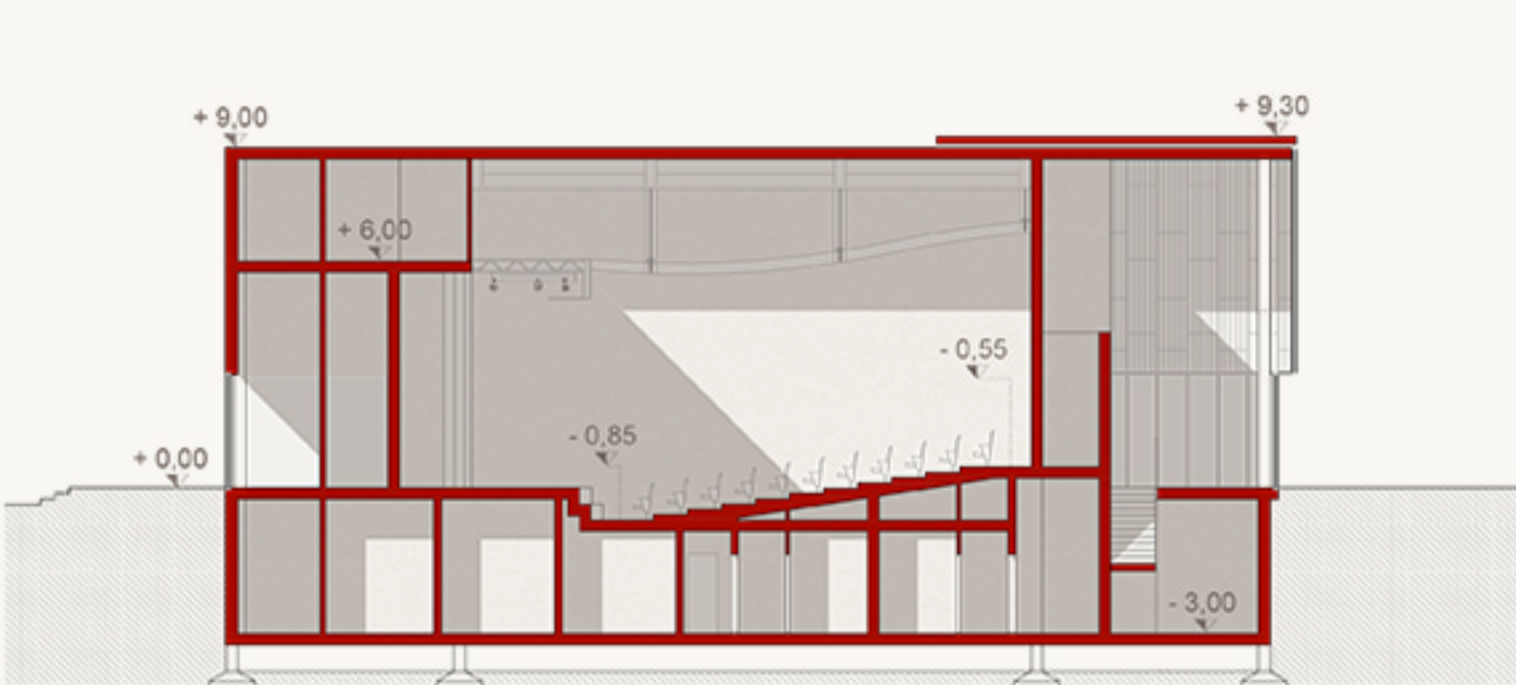
## PIANTA + 6.0

- 7. Torre scenica e regia
- 8. Locale tecnico

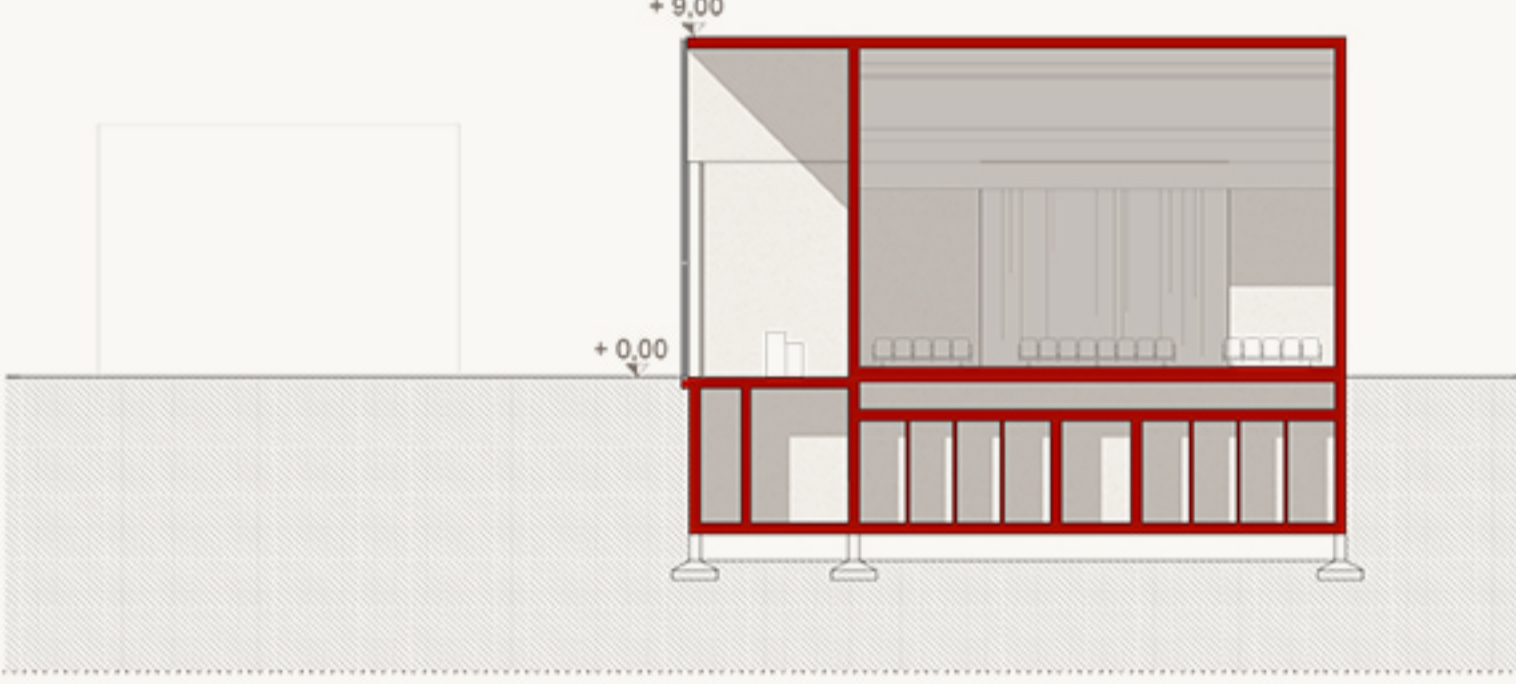


## PIANTA - 3.0

- 9. Servizi per il pubblico
- 10. Camerini e spogliatoi
- 11. Magazzino
- 12. Locale tecnico



## SEZIONE A-A'

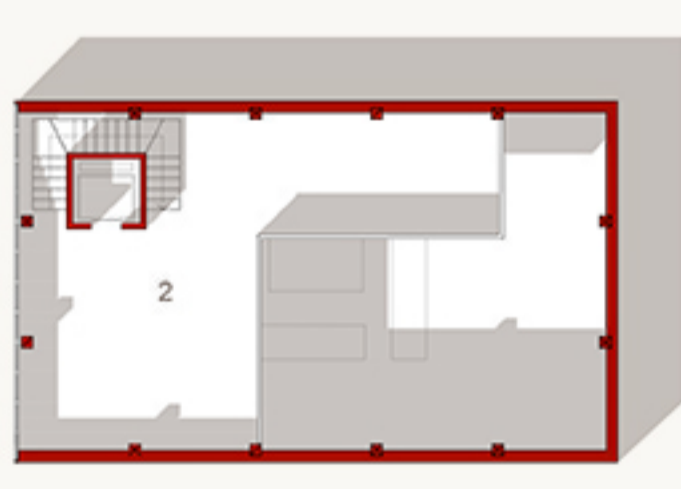
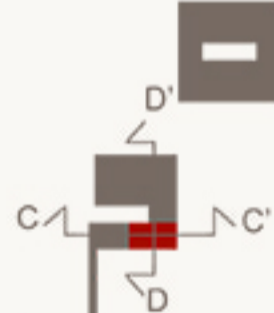


## SEZIONE B-B'

# CAFFETTERIA

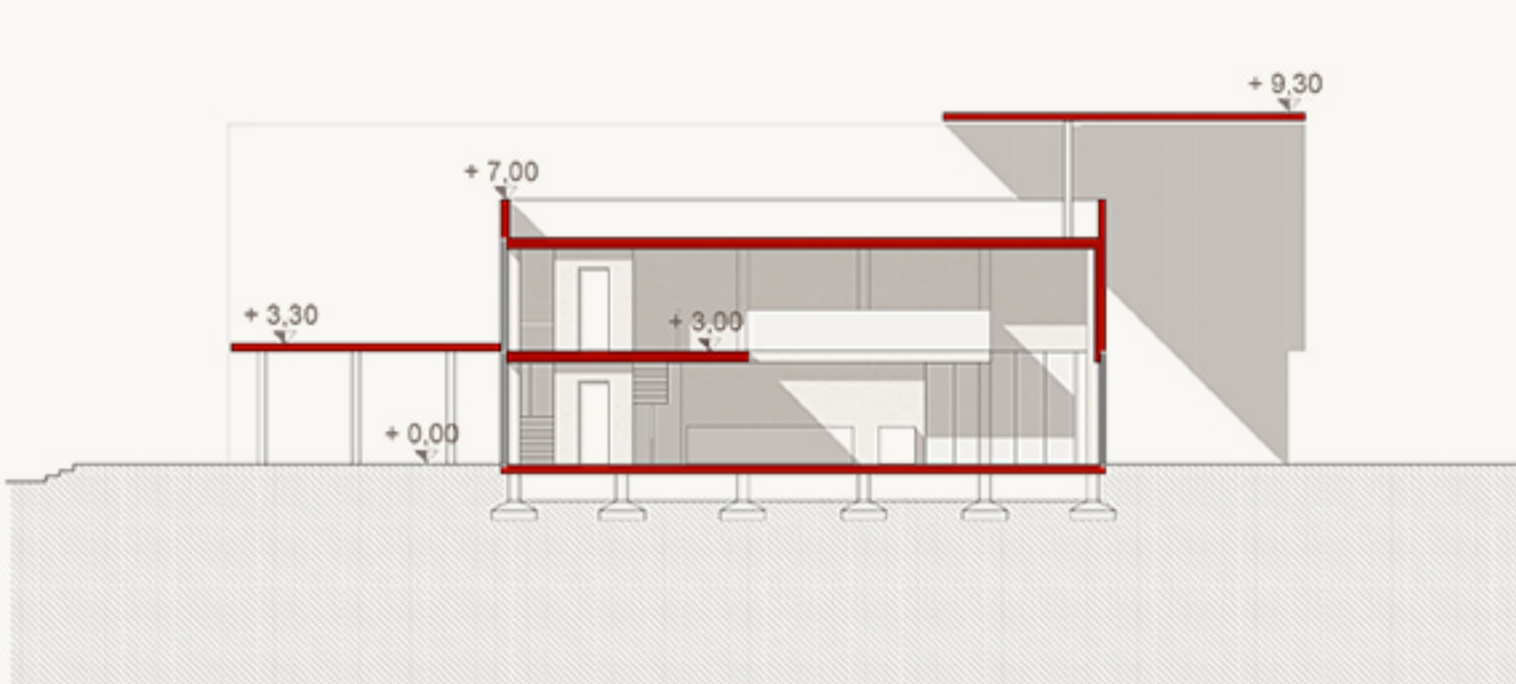
## PIANTA +0.0

- 1. Bancone e tavolini

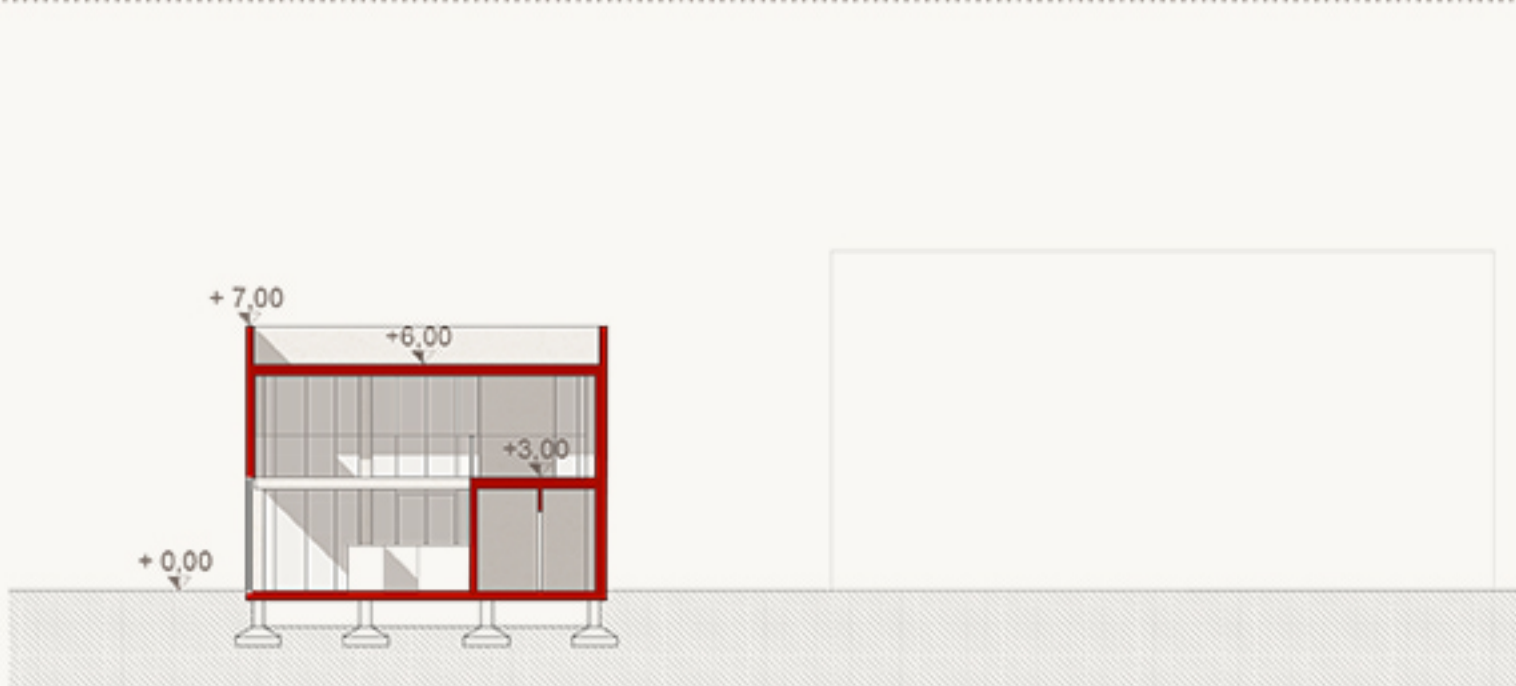


## PIANTA +0.3

- 2. Tavolini



## SEZIONE C-C'



## SEZIONE D-D'