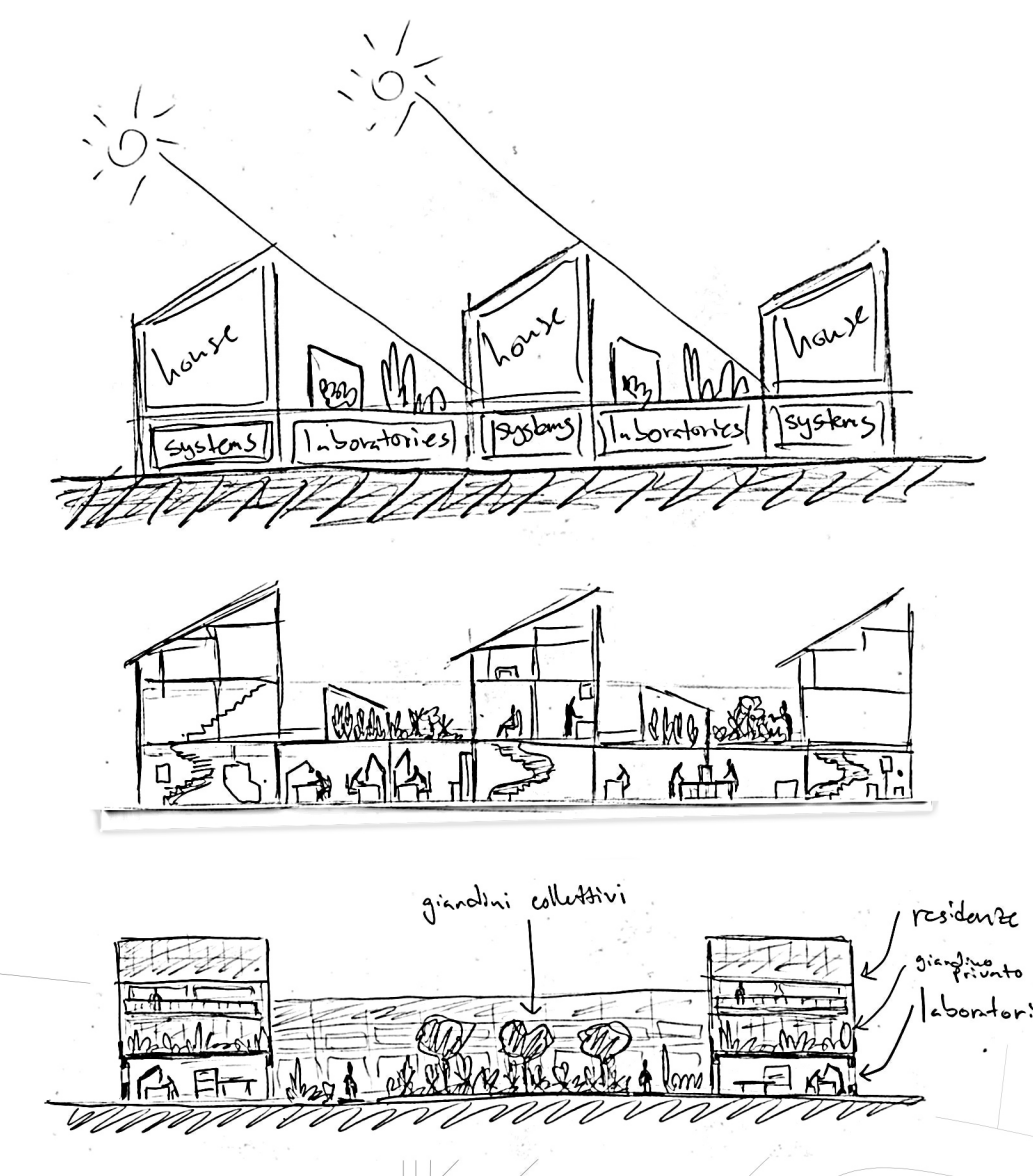


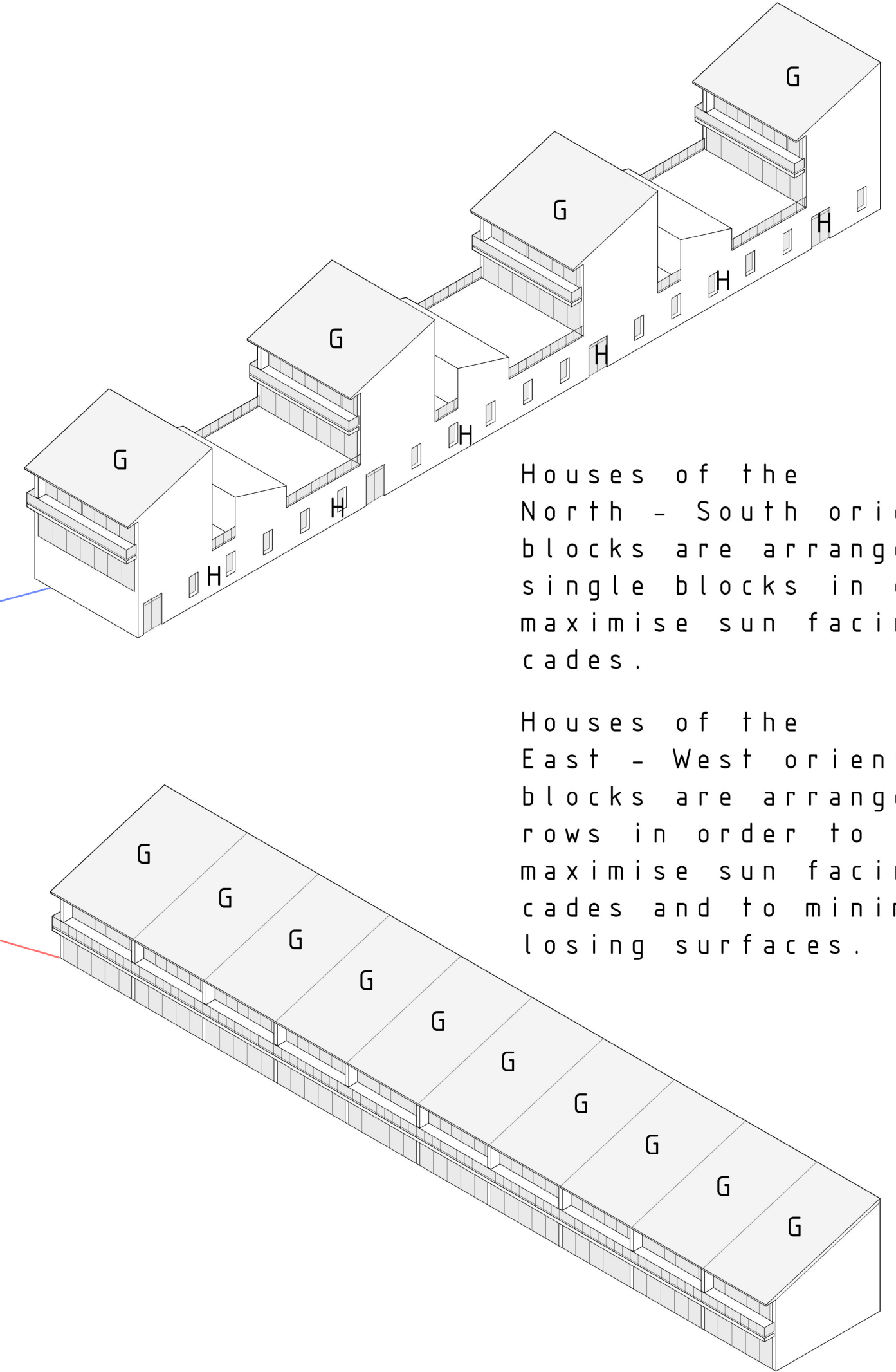
FOOD	WORK	ENERGY	RECYCLING	TRANSPORTATION
permaculture	CHP plant	CHP plant	grey water reuse	electric car sharing
food forests	polydome	PV	rainwater collection	public transportation
polydome	home workshops	solar	compost	bicycle lanes
aquaponics	commercial center	energy efficiency	waste recycling	car-free neighborhood
horticulture	community	biofuels		
veg gardens				



Project's masterplan 1-2000



Project's south-east axonometric view 1-2000



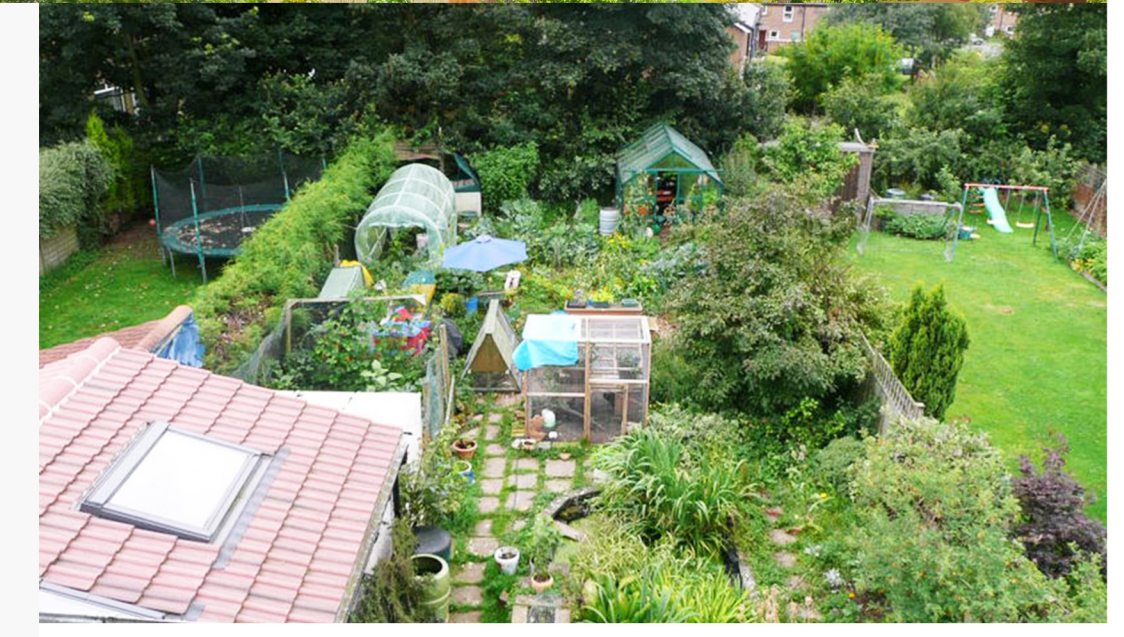
Houses of the North - South oriented blocks are arranged in single blocks in order to maximise sun facing facades.

Houses of the East - West oriented blocks are arranged in rows in order to maximise sun facing facades and to minimise heat losing surfaces.

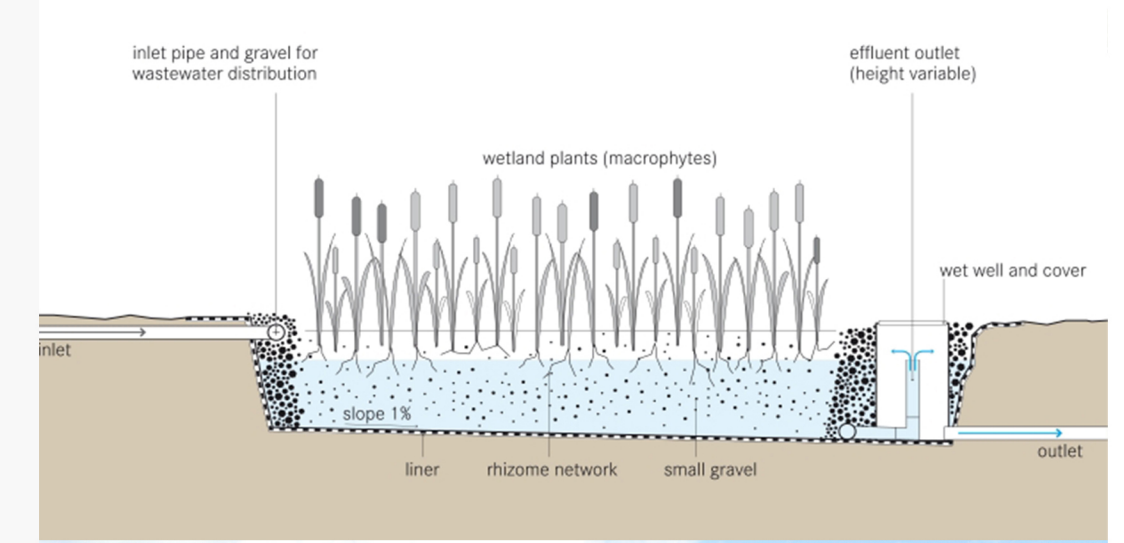
A. Polydome system for intensive food production with integrated commercial center and food market.



B. Permaculture polyculture food cultivation



C. Constructed wetlands for grey water purification and reuse



D. Natural pond for rain water collection and organic cultivation of shellfish and fish for food



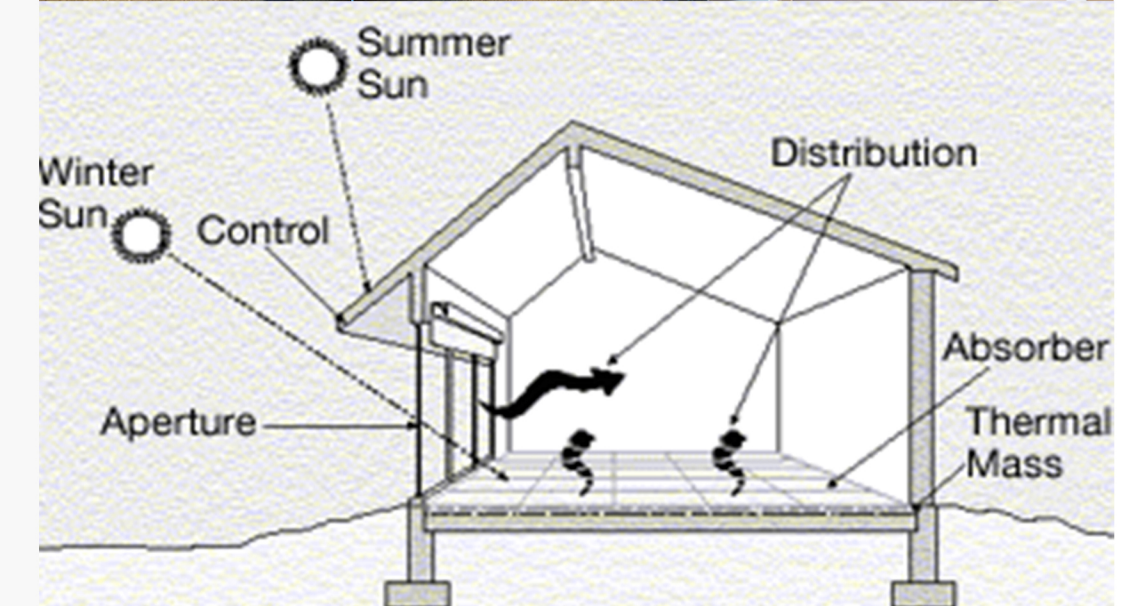
E. A system of urban bike trails and pedestrian trails which connect Lambrate with Segrate.



F. Community center, meeting rooms and learning center



G. Solar passive zero-energy homes with preference for worker's families.



H. Home workshop and laboratories. Small-scale green industries



I. Electric car service for community and workers



J. Biomass fired district heating CHP plant which provides the community with electricity and hot water

