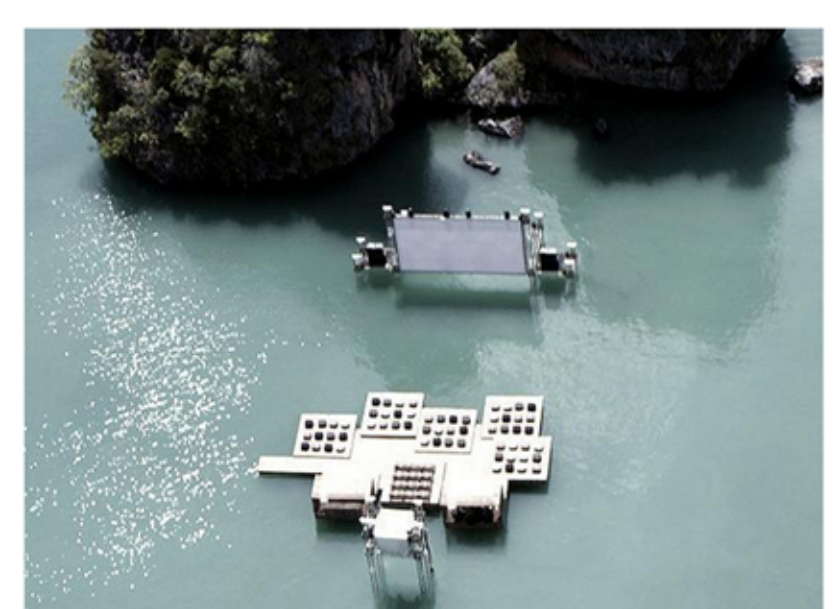




SEEBUNE (O PALCO GALLEGIANTE), Berengenz, Austria



SALON THEATRE HERZBARACKE , Lago di Zurigo, Svizzera



CINEMA GALLEGGIANTE , Phuket, Tailandia



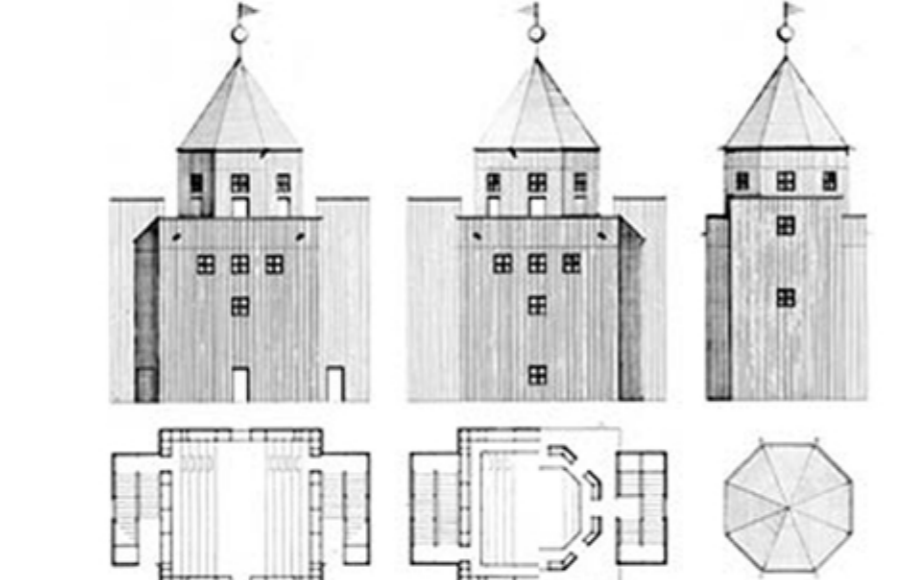
PISCINE PAILLERON , Parigi, Francia



CONCERTO PINK FLOID , 1989, Canal Grande, Venezia



REGATA STORICA , Canal Grande, Venezia



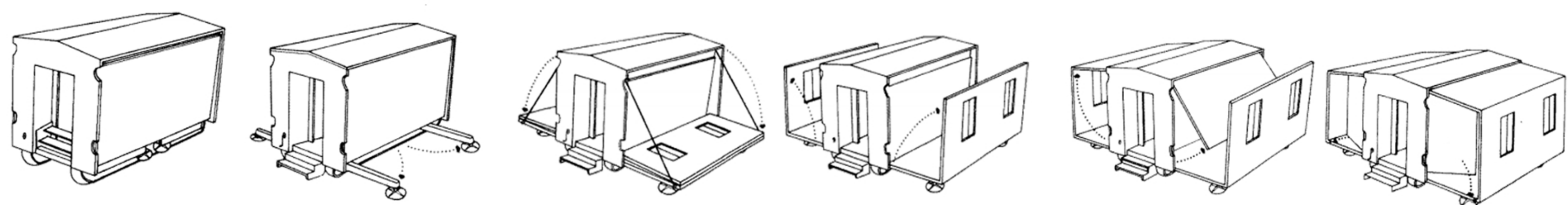
TEATRO DEL MONDO , arch. A.Rossi, 1980, Biennale di Venezia



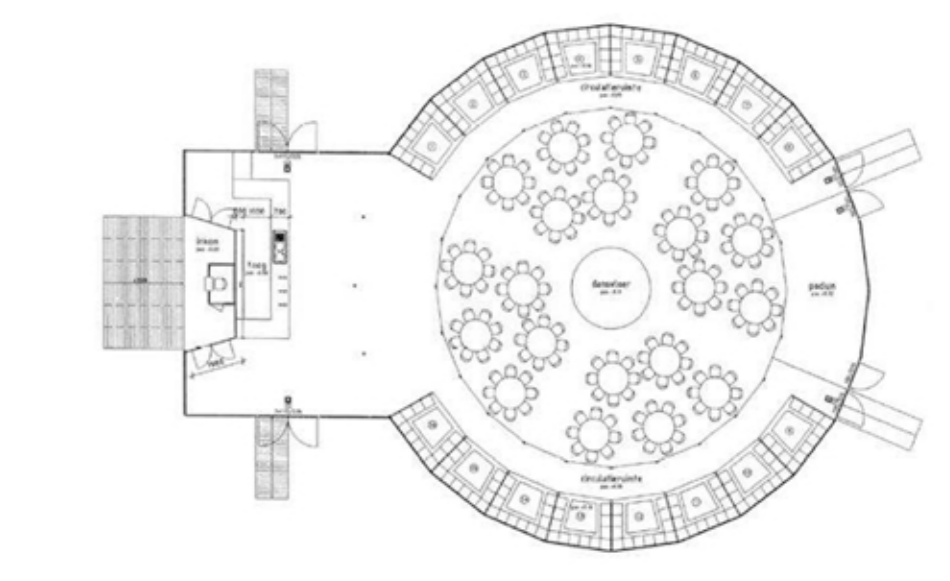
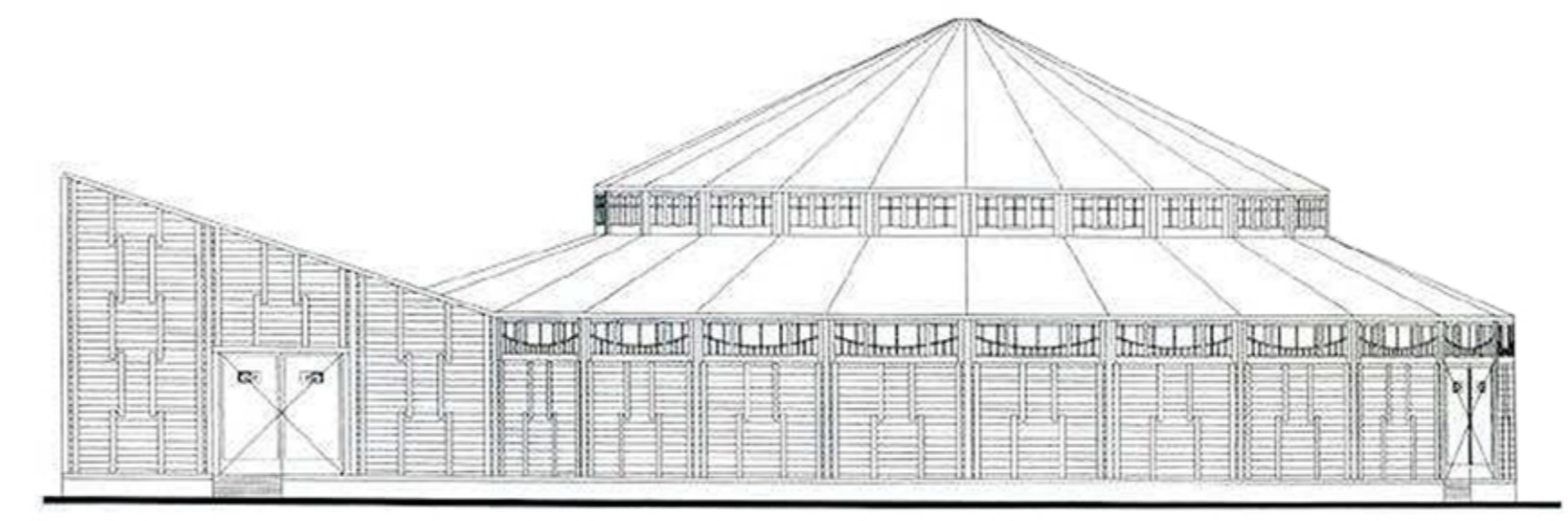
UNITA' CINEMA MOBILE , Tutenkamion



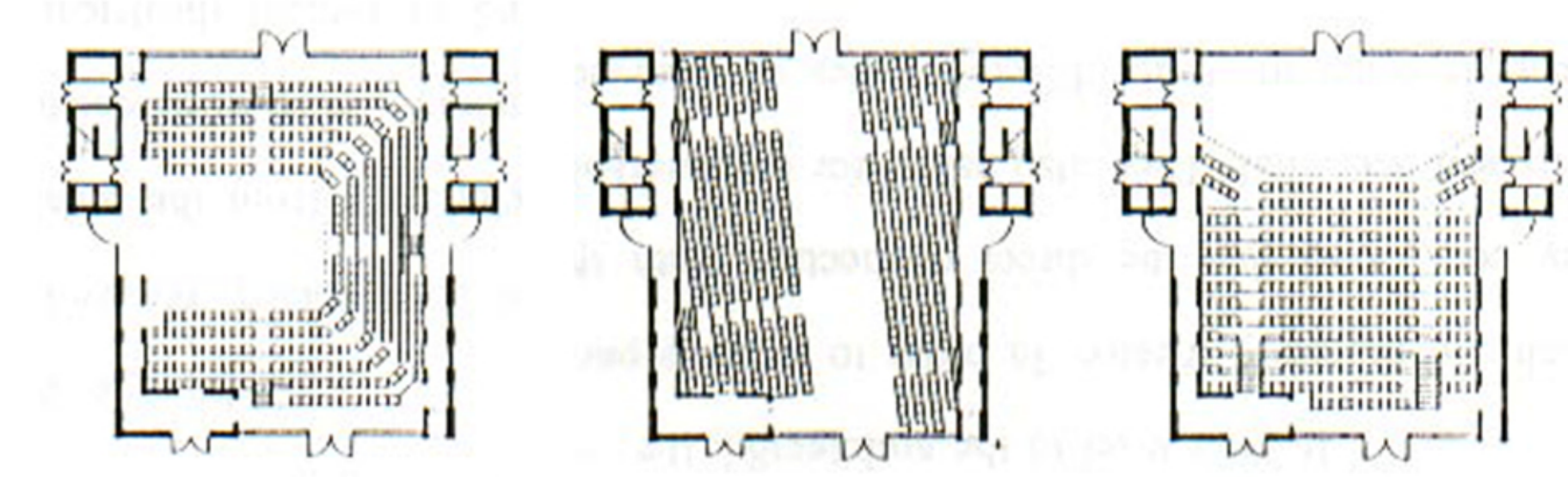
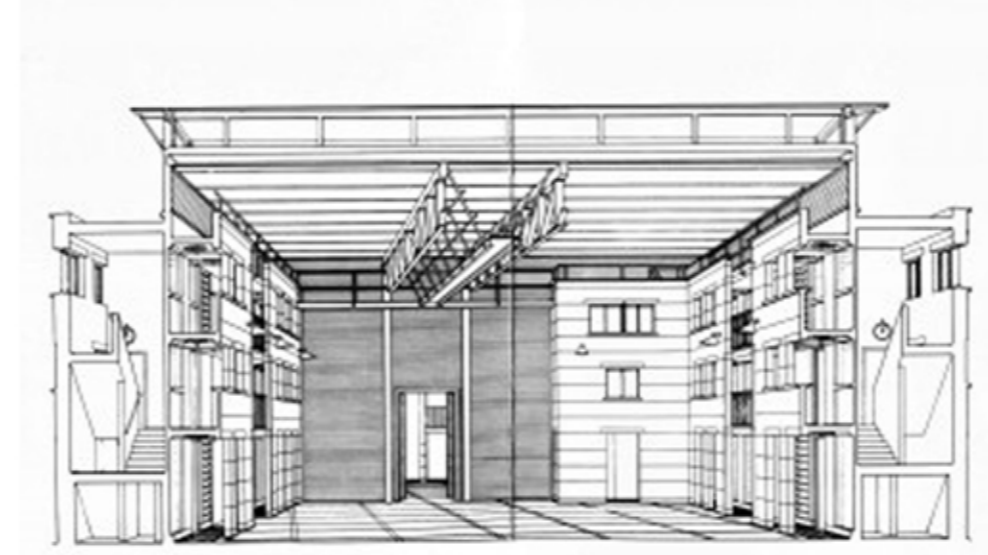
VINTAGE MOBILE CINEMA



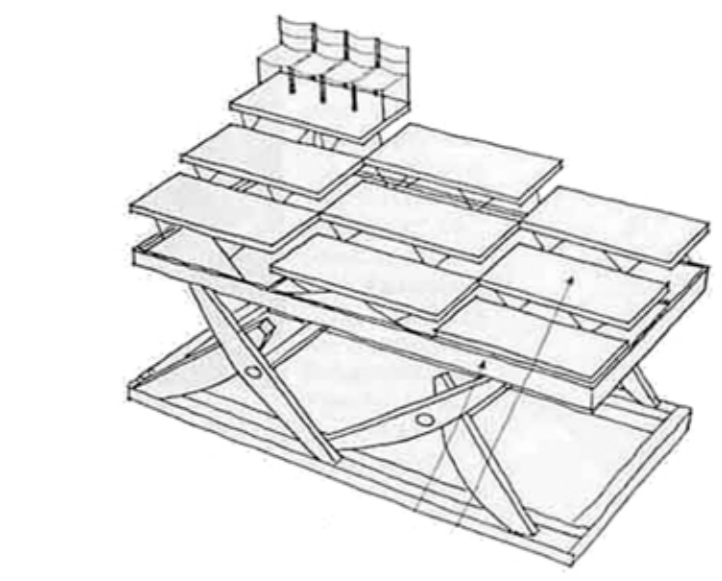
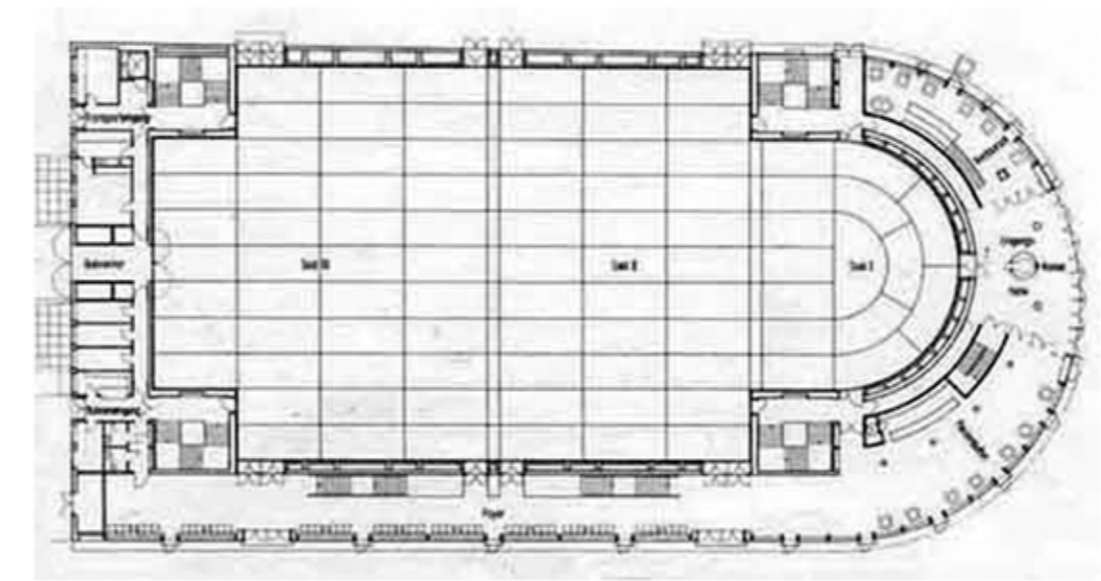
MAPI , Arch.Spadolini , 1980



TEATRO DANSOIR , Parigi, Francia



HALF MOON THEATRE , Londra, Regno Unito



SCAUBUHNE THEATRE , Berlino, Germania



COLEMAN CENTER OF ARTS , M.Mazzotta, 2012 , New York, Usa



TEATRO SZEKSPIROWSKI, Arch. Rizzi, 2014, Gdansk, Polonia



POLITECNICO MILANO 1863

FACOLTA' DI ARCHITETTURA E SOCIETA' A.A. 2014/2015 TESI DI LAUREA IN ARCHITETTURA DEGLI INTERNI

CINEMUSEO ITINERANTE PER LA BIENNALE DI VENEZIA

STUDENTE : ALESSANDRO NUZZI RELATORE : PROF. ARCH. PIERFEDERICO CALIARI CORRELATORI : ARCH. OSSOLA SAMUELE, ARCH. CHIAPPERINO ALESSIA COLLABORATORI : MINOIA SILVIA, TRADIGO MARCO