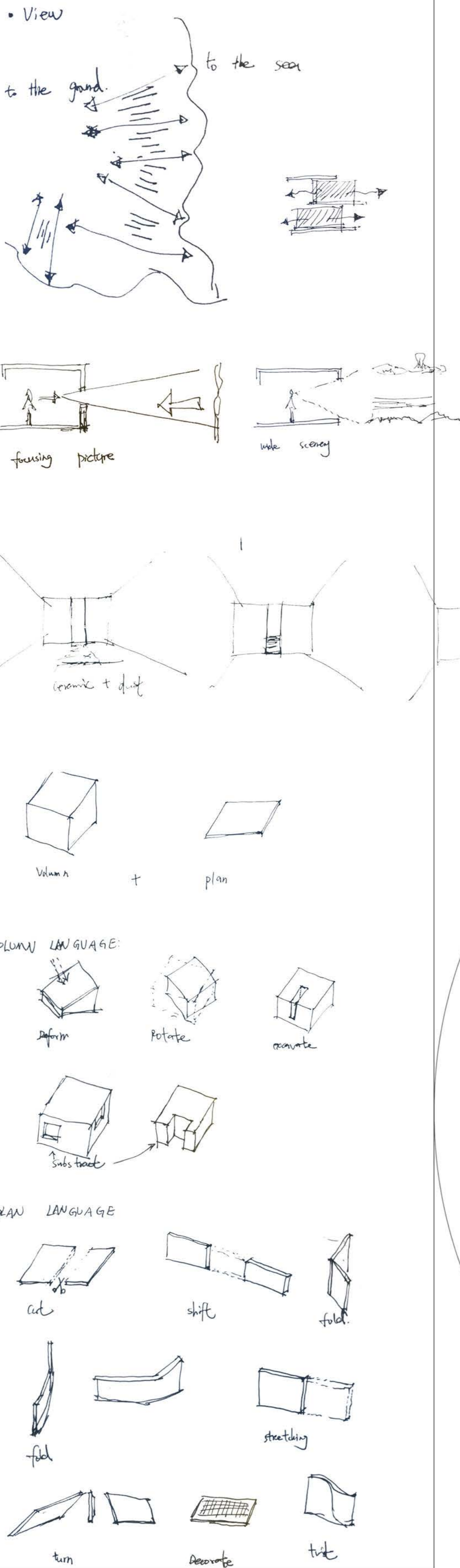


LAND AND WATER

Pre-fab and modular hotel

The ground will break and diffuse

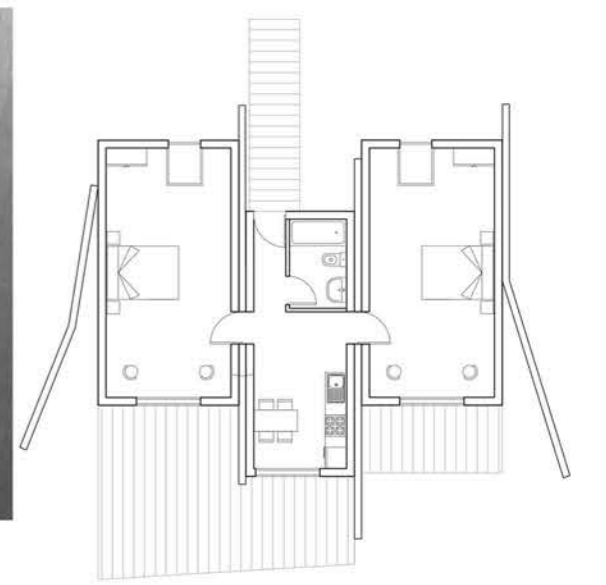
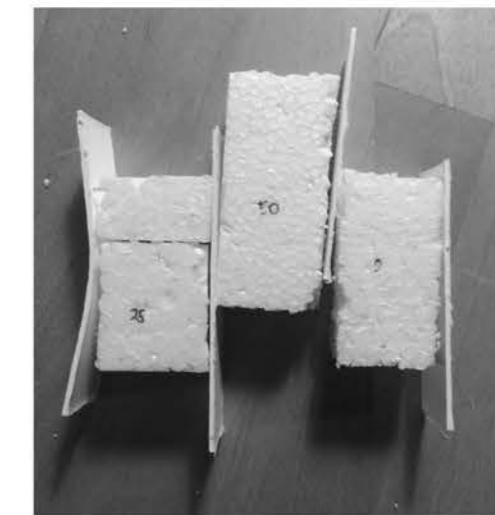
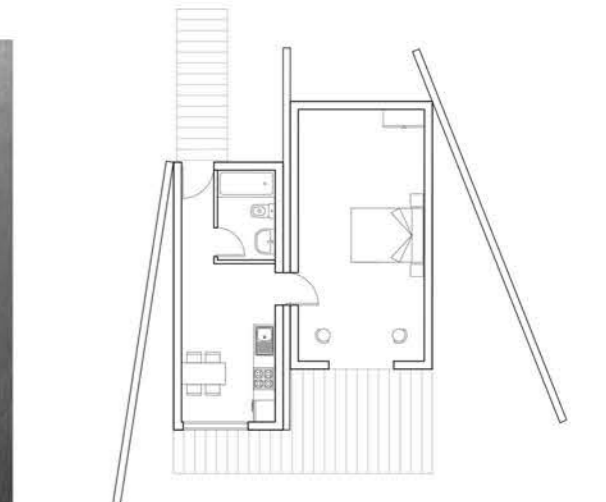
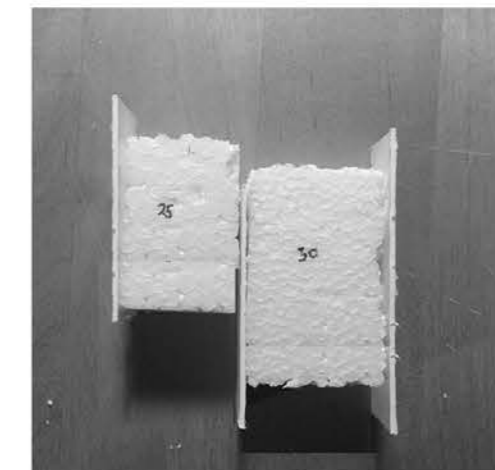
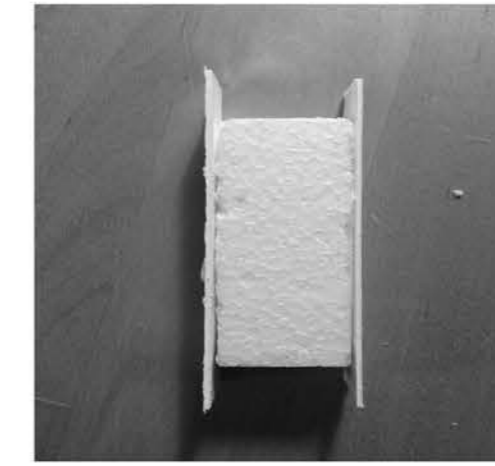
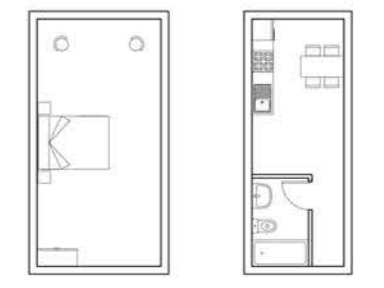
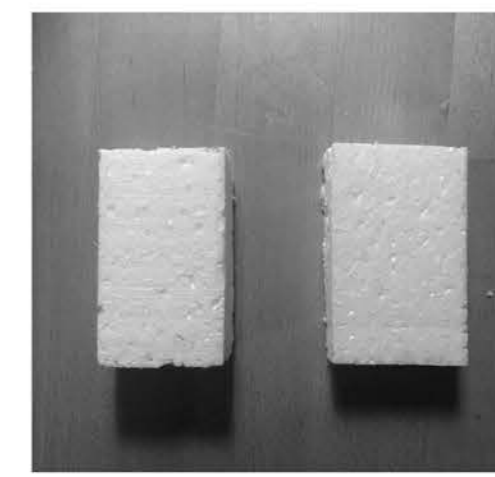
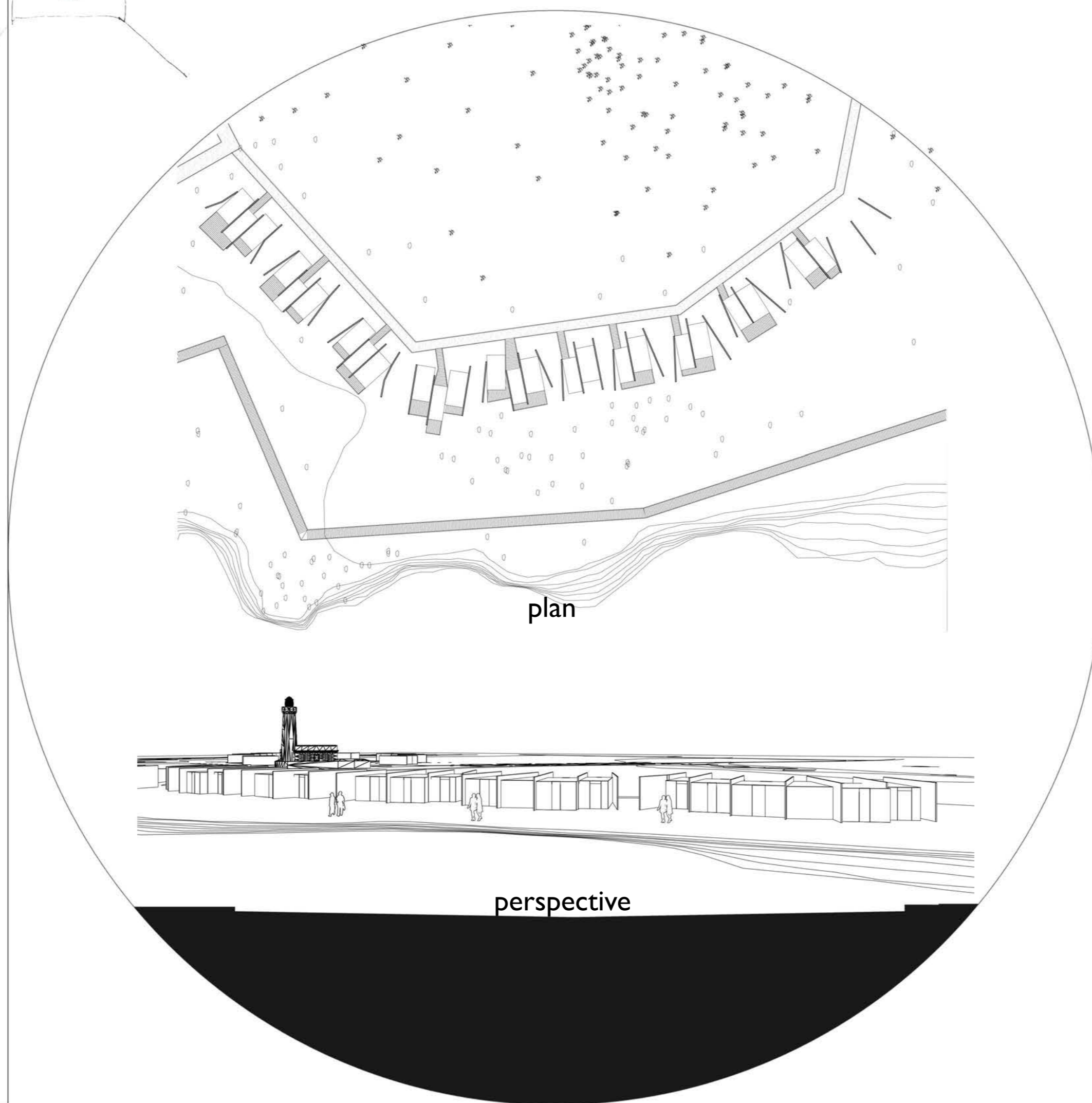
Living platform and volumn in the nature



colour sketch

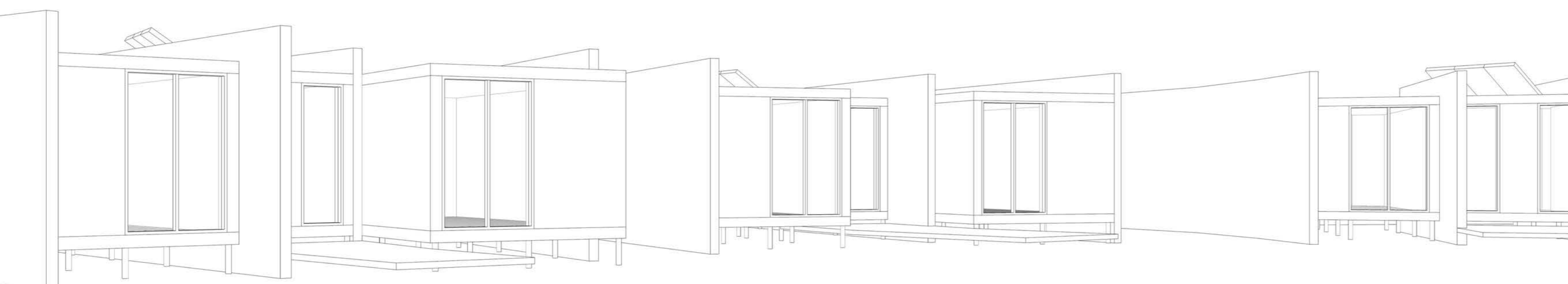
Water became a tool in understanding the public quality of the city, keeping in mind the theoretical distinction between Kant approach that defines the "public space" as an abstract concept especially considering it as the space of the word, the exchange of ideas and opinions; and goffman Empirical approach that defines 'public spaces' as a concrete concept considering them as the physical spaces of social interaction in everyday life. The architectonic impact of the public piazza is low but the quality is high. These are the concrete physical public spaces and in consequence, the abstract connection between these urban interventions

happens automatically materialized as an extensive range of ephemeral constructions, spontaneous installations and assemblages, and eccentric performances that challenge the "normative" organisation of the physical public spaces. It is also the pavillion for the event and can be framed as "agent of change" that operate or exist in order to subvert, resist and destabilize the tangible, fixed and known perception in the water canal. It will create patterns and vibrations of flux, flow and process, melange and hybridity across borders and beneath surveillance' representing a 'positive force of freedom' in the public space meaning in Leeuwarden."



Prefab technology

Section elevation



rendering

