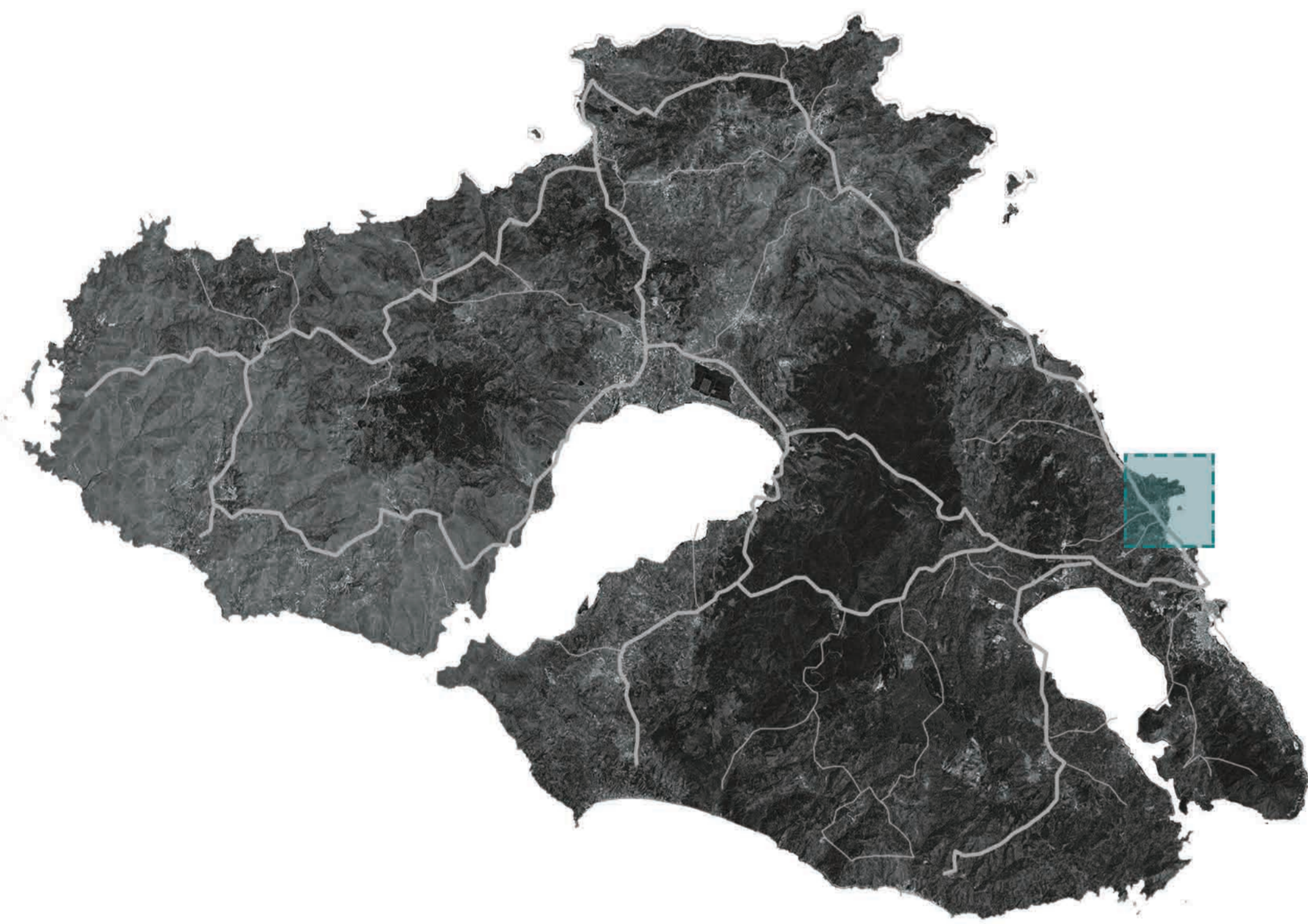


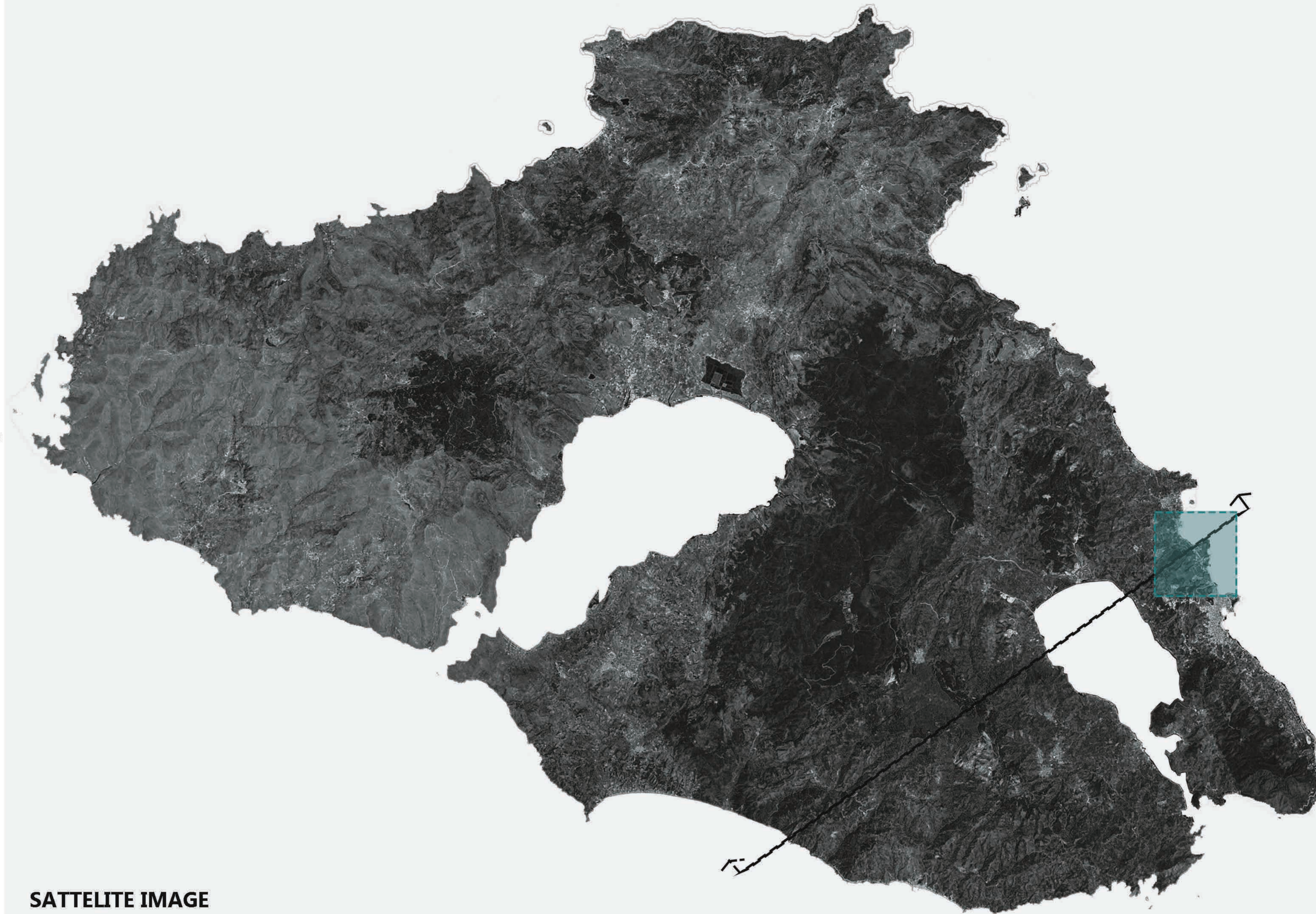
SETTLEMENTS NETWORK



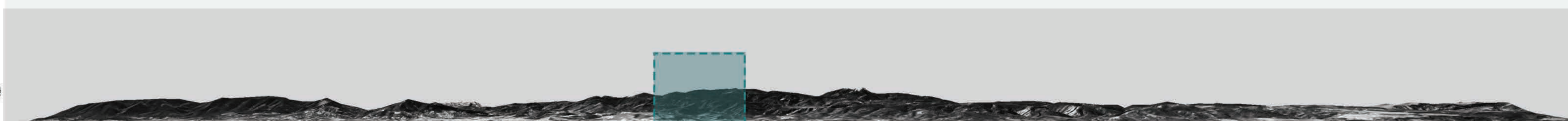
ROADS NETWORK



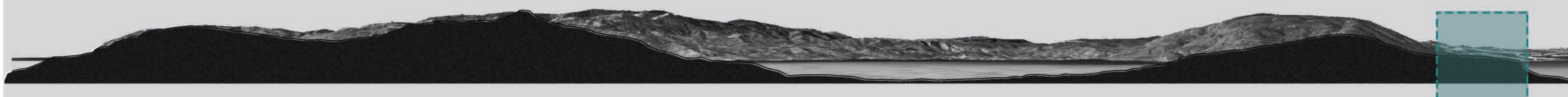
RIVERS NETWORK



SATELLITE IMAGE



ISLAND ELEVATION



ISLAND SECTION

MORPHOLOGY OF LESVOS' ISLAND COASTS



COAST DEEPEP STEEP INTO THE SEE



SANDY COAST WITH DUNES



ROCKY COAST