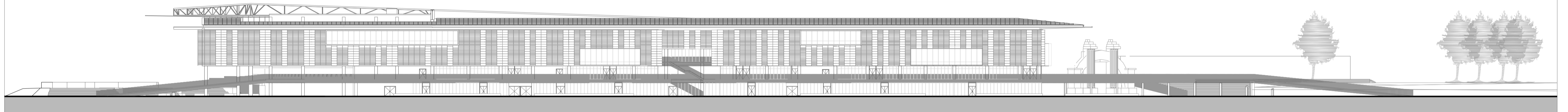
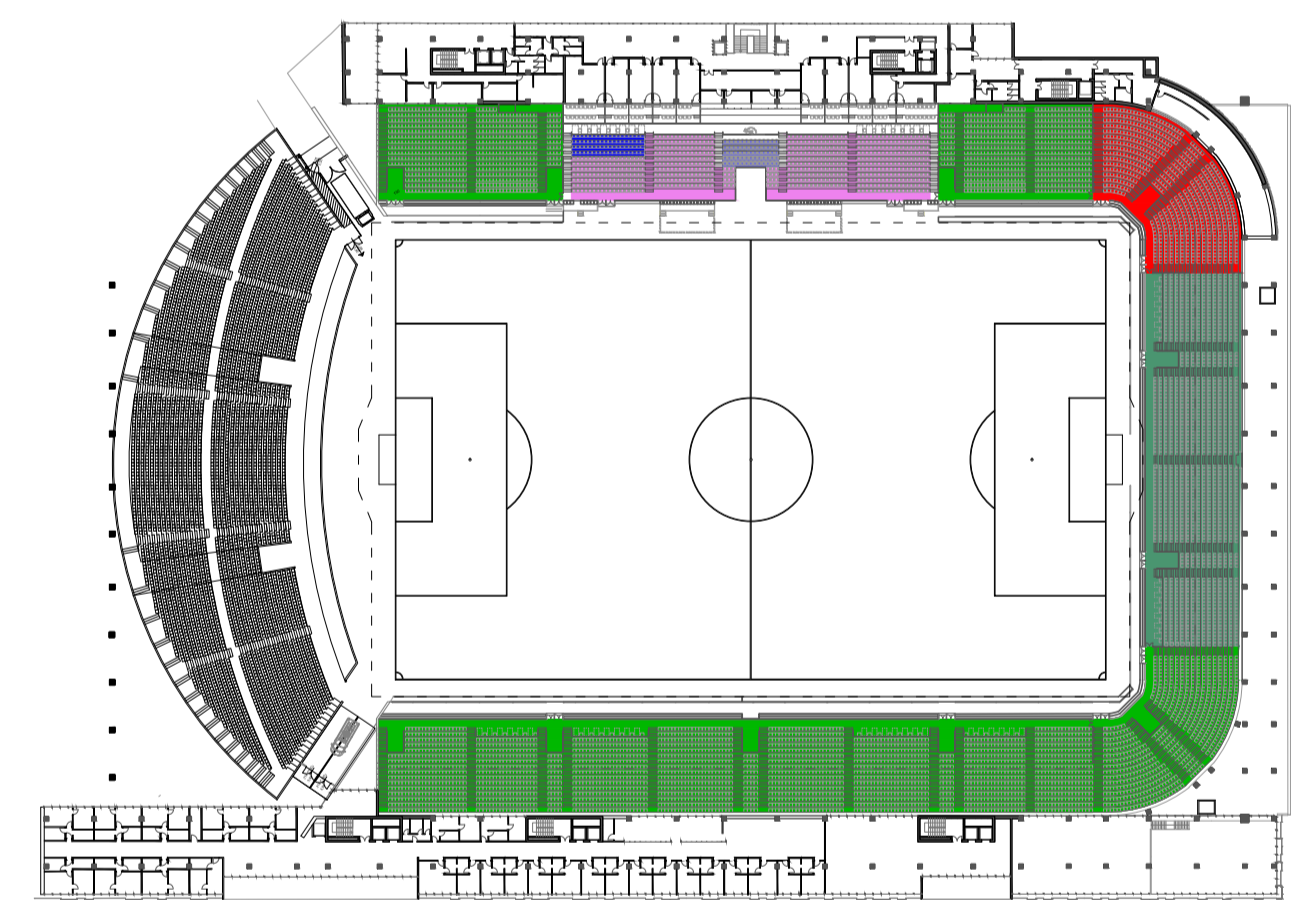
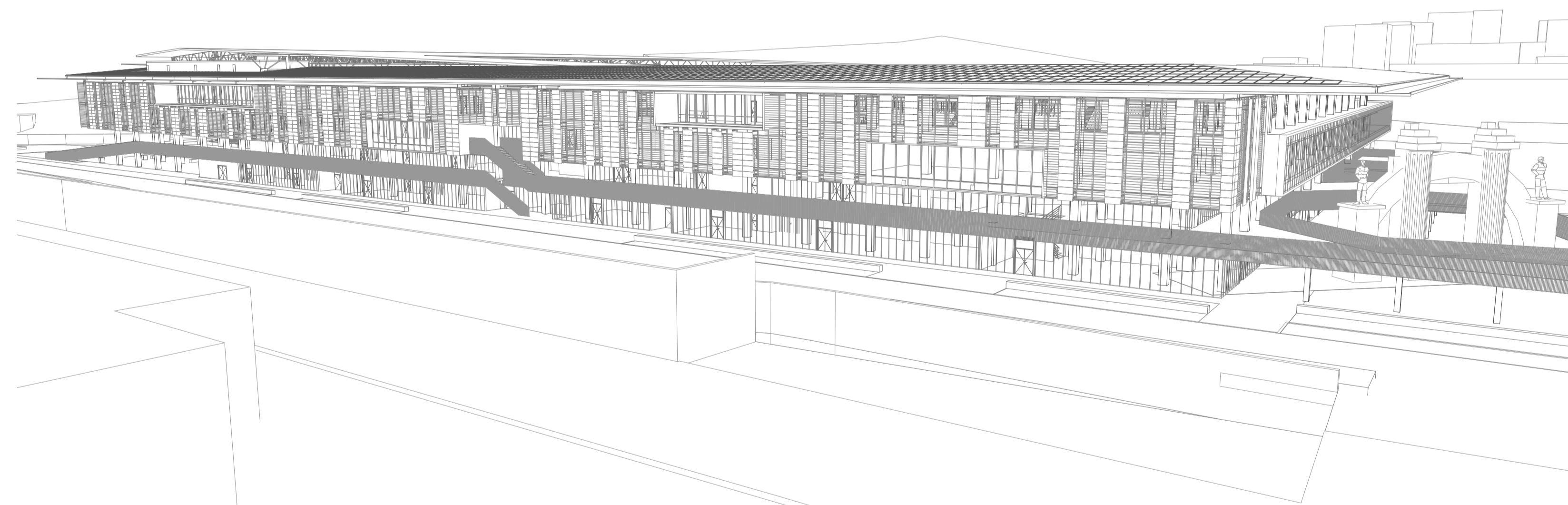


PIANTA PIANO TERZO Scala 1:500

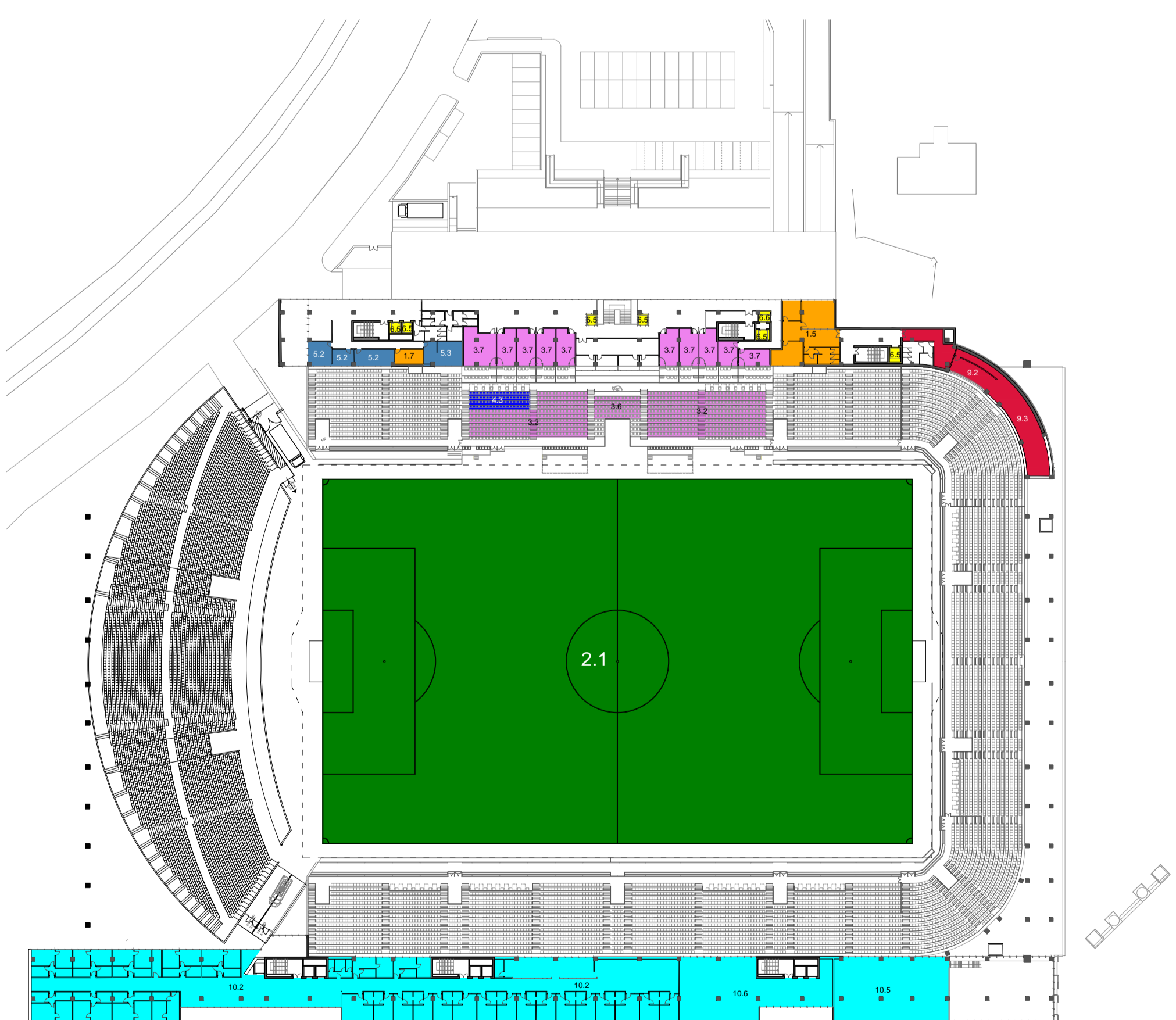


PROSPETTO SUD Scala 1:500



- Settori
- Settore Estate - 4.525 posti
  - Settore Curva Piacenza - 1.482 posti
  - Tribuna d'Onore - 664 posti
  - Settore Personalità e VIP - 65 posti
  - SUV Boxes - 76 posti
  - Tribuna Stampa - 22 posti (incrementabili)
  - Settore ospiti - 625 posti
  - Posti nuove totali - 7.446 posti

SETTORI STADIO



- |                              |                               |                        |                                     |
|------------------------------|-------------------------------|------------------------|-------------------------------------|
| <b>ORGANISER</b>             | 1.1 Office organiser          | <b>TV &amp; RADIO</b>  | 3.1 Flash interview position        |
|                              | 1.2 Accreditation center      |                        | 3.2 Indoor TV studio                |
|                              | 1.3 Volunteer center          |                        | 3.3 Pitch view studio               |
|                              | 1.4 Ticket collector point    |                        | 3.4 Commentary position             |
|                              | 1.5 Administration area       |                        | 3.5 Camera position                 |
|                              | 1.6 Stb                       |                        | 3.6 TV production area              |
|                              | 1.7 Storage organiser         |                        | 3.7 TV compound / Parking TV        |
|                              | 1.8 Technological area        |                        |                                     |
| <b>TECHNICAL AREA</b>        | 2.1 Pitch                     | <b>SERVICE</b>         | 4.1 Signage working area            |
|                              | 2.2 Changing room team A      |                        | 4.2 Concession merchandising        |
|                              | 2.3 Changing room team B      |                        | 4.3 Concession F&B                  |
|                              | 2.4 Changing room team A      |                        | 4.4 Waste management area           |
|                              | 2.5 Changing room team B      |                        | 4.5 Piazza III                      |
|                              | 2.6 Changing room referees    |                        | 4.6 Service III                     |
|                              | 2.7 Line designer office      |                        |                                     |
|                              | 2.8 Emergency medical room    | <b>SECURITY</b>        | 5.1 Steward centre                  |
|                              | 2.9 Dressing control station  |                        | 5.2 Stadium control room            |
|                              | 2.10 Storage match operators  |                        | 5.3 Security briefing area          |
|                              | 2.11 Parking team & officials |                        | 5.4 Police                          |
|                              |                               |                        | 5.5 First aid                       |
| <b>VIP &amp; HOSPITALITY</b> | 3.1 VIP Hospitality           |                        | 5.6 Fire brigade                    |
|                              | 3.2 VIP Tribune               |                        | 5.7 Date                            |
|                              | 3.3 Corporate hospitality     |                        | 5.8 Emergency exit                  |
|                              | 3.4 VIP F&B                   |                        | 5.9 Emergency security parking      |
|                              | 3.5 VIP area                  | <b>PUBLIC SERVICES</b> | 6.1                                 |
|                              | 3.6 VIP Tribune               |                        | 6.2 Servizi commerciali             |
|                              | 3.7 Gift Shop                 |                        | 6.3 Albergò                         |
|                              | 3.8 Parking VIP               |                        | 6.4 Servizi ristorazione e F&B      |
|                              |                               |                        | 6.5 Servizi sport                   |
| <b>MEDIA</b>                 | 4.1 Stadium media centre      |                        | 6.6 Biblioteca e spazi universitari |
|                              | 4.2 Media Tribune             |                        | 6.7 Polo Torneo Liguria             |
|                              | 4.3 Photographic position     |                        | 6.8 Asilo / Baby Parking            |
|                              | 4.4 Press conference room     |                        |                                     |
|                              | 4.5 Media hospitality         |                        |                                     |
|                              | 4.6 Press room                |                        |                                     |
|                              | 4.7 Media F&B                 |                        |                                     |
|                              | 4.8 Packing media             |                        |                                     |

SCHEMA STRUTTURALE

STADIUM LEVEL MAP - UEFA TEMPLATE

