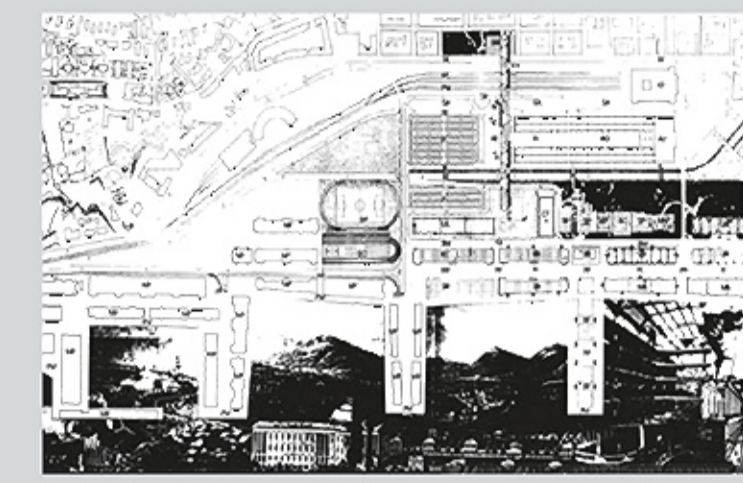
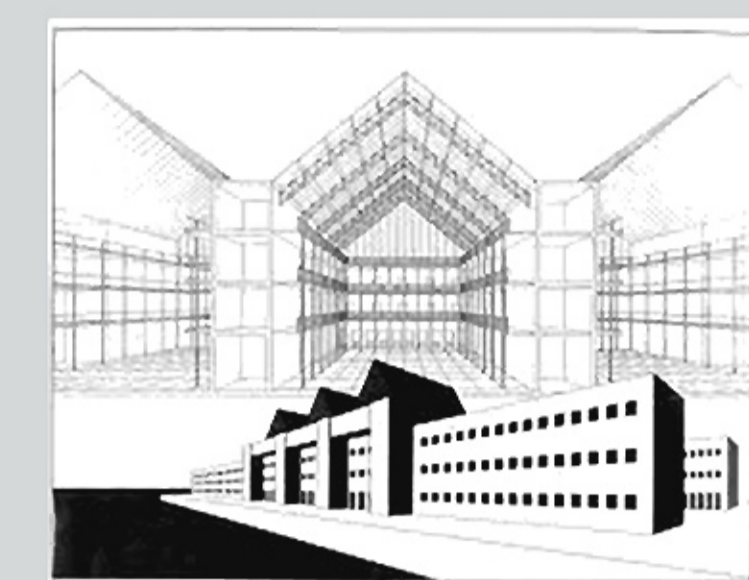
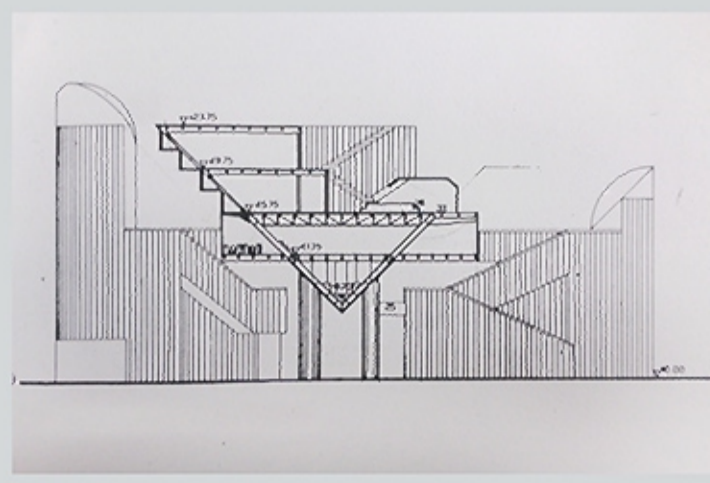


## VISTE PROSPETTICHE

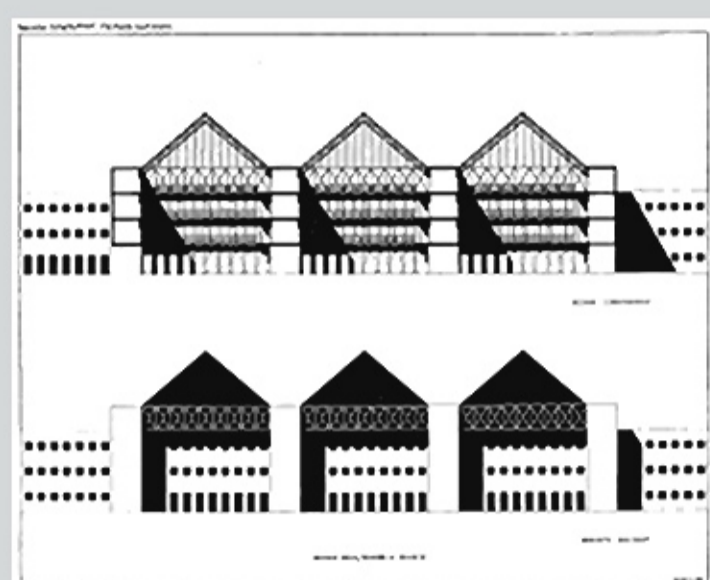
### RIFERIMENTI PROGETTUALI



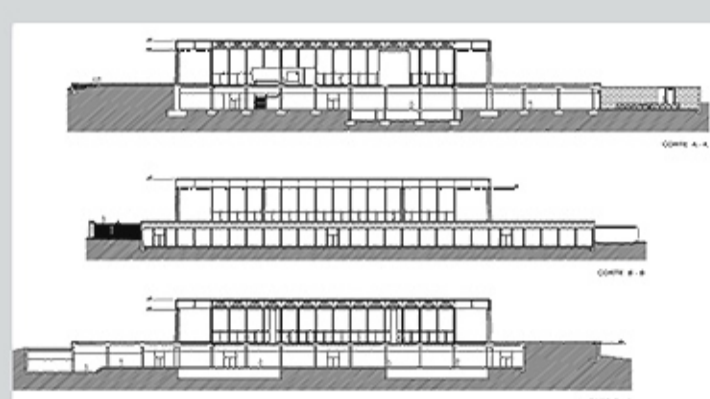
PROGETTO DI CONCORSO, CENTRO AMMINISTRATIVO REGIONALE - TRIESTE - GUIDO CANELLA - 1974



PROGETTO DI CONCORSO, CENTRO AMMINISTRATIVO REGIONALE - TRIESTE - ALDO ROSSI - 1974



NEUE NATIONALGALERIE - BERLINO - MIES VAN DER ROHE - 1968



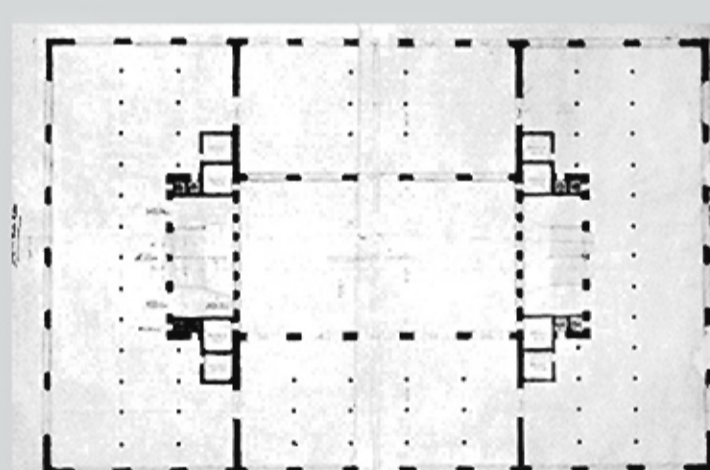
CROWN HALL - CHICAGO - MIES VAN DER ROHE - 1956



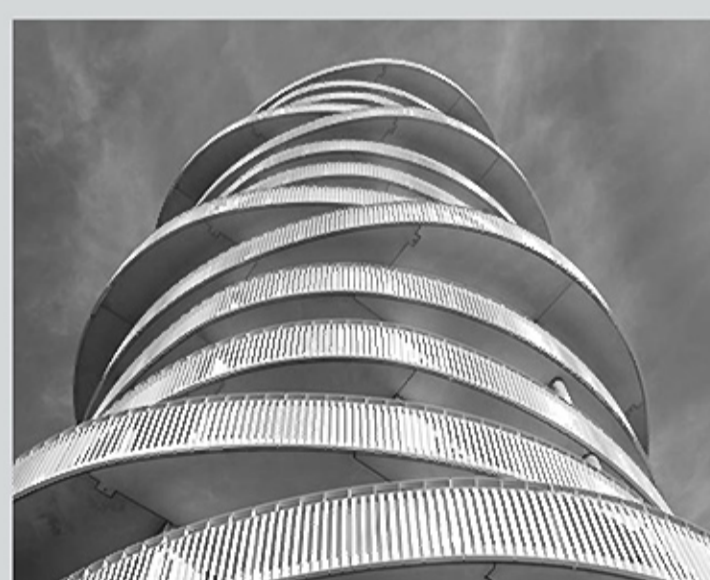
CITE' INDUSTRIELLE - LA HALLE - LIONE - TONY GARNIER - 1914/1917



MARSHALL FIELD WHOLESALE STORE - CHICAGO - HENRY HOBSON RICHARDSON - 1887



TWISTER TOWER - COPENHAGEN - CHRISTENSEN & CO. ARKITEKTER - 2007



MALAGA CRUISE TERMINAL - MALAGA - 2008/2011



FONDAZIONE FELTRINELLI - MILANO - HERZOG & DE MEURON - 2016



### Contenuti tavola

1. Viste prospettive



2. Riferimenti progettuali

Scuola di Architettura Civile - Politecnico di Milano

TRIESTE INCOMPIUTA: PROGETTI E STRATEGIE PER UNA VECCHIA E NUOVA PORTUALITA'

Allievo: Farioli Giacomo - 822718

Relatore: Prof. F. Acuto

Consulente: Arch. M. Marinelli

