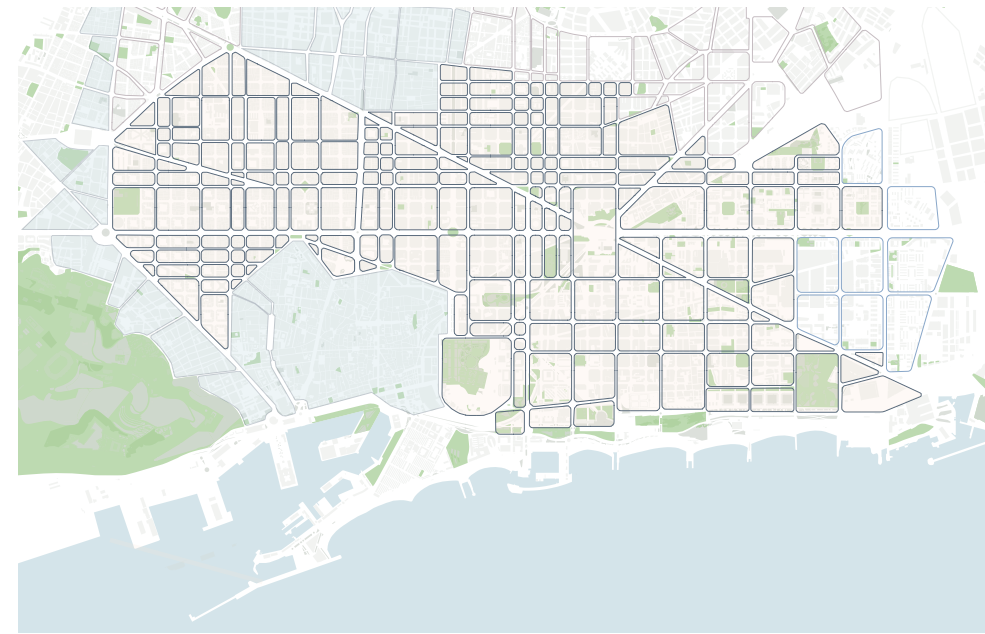


Legend of the map

Central part of Barcelona in 2017

1 : 10,000

- The Eixample and adjacent urban areas developed from the end of XIX century, till nowadays following outlines of the original constrains of the block.
- Public buildings designed with public open space under restriction of the urban block dimensions.
- Ancient city and suburbs that were united by the Eixample master plan, modern urban development



'Superblock' policy masterplan  
Based on Official Mobility plan approved in 2015 in Barcelona

1 : 10,000

Types of superblocks by morphological content:

- Regular Eixample courtyard typology
- Compact city areas
- Compact city areas with traffic restrictions applied earlier
- Territories under development

Consider Barcelona today

The capital of Catalonia of Spain

A city of 1609 million persons inhabiting 101 km<sup>2</sup>, with an average density of 15,990 persons/km<sup>2</sup>.

Barcelona is a car oriented city

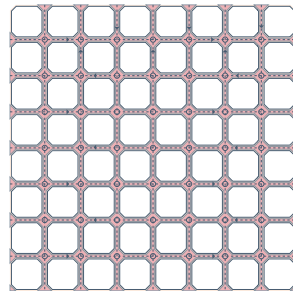
Currently, Barcelona has 912 km of roads and streets dedicated to motorized traffic. Private vehicles account for just 20% of total movements in the city today and yet they occupy 60% of roads.

Public domain crisis

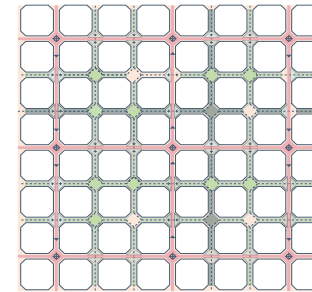
And, most importantly, Barcelona residents cannot use the streets that were originally designed for community activities because they are now dedicated to motorized vehicles.



Existing urban system of Eixample

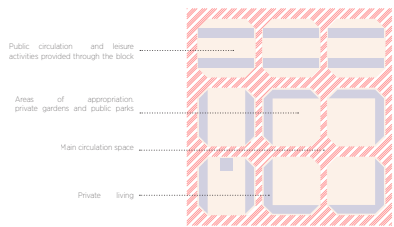


Regenerated urban system of Eixample



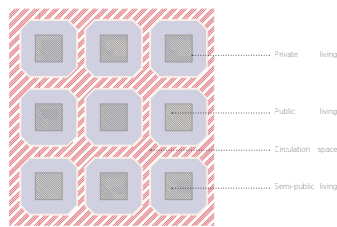
City of the Future

Functional separation as a fundamental design principle



Conceptual diagram express organization of the urban space designed for extension of Barcelona by Ildefons Cerdà in 1859.

Transport circulation system dominates

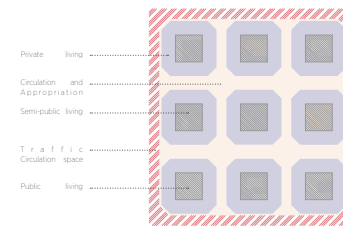


Morphological transformation

time

Modernization  
Motorization  
Densification  
Privatization

Re-appropriation of the urban space



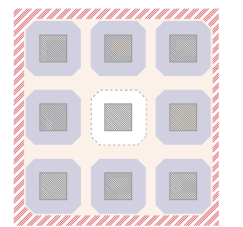
Conceptual diagram express organization of the urban space designed for extension of Barcelona by Ildefons Cerdà in 1859.

Morphological transformation

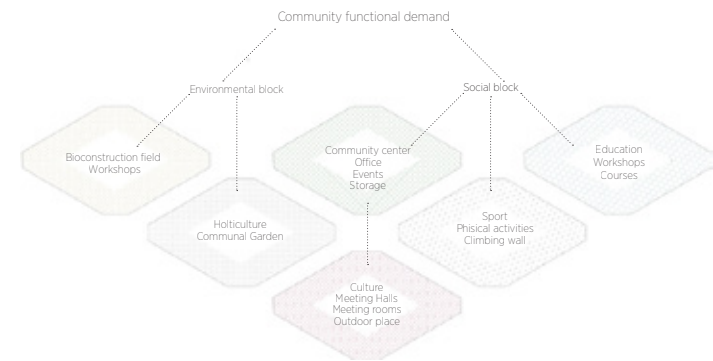
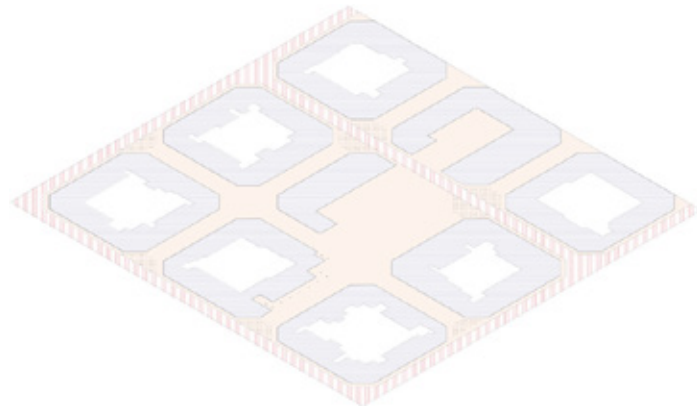
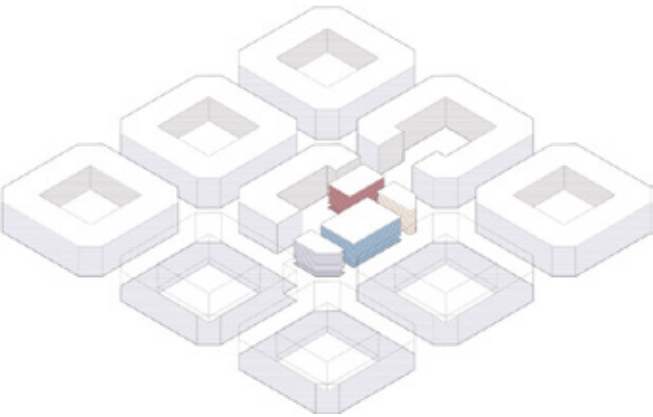
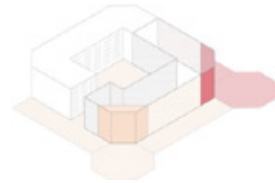
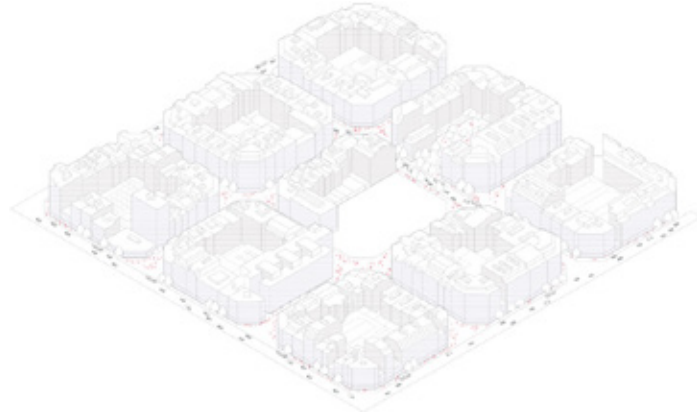
Change of organizational Rule

No Hierarchy  
Accessible  
Human oriented  
Personalized

New model of the urban block



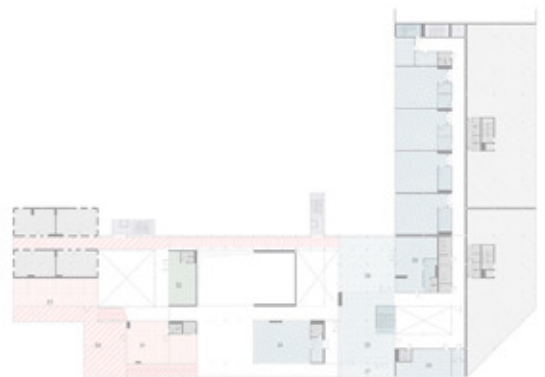
Conceptual diagram express organization of the urban space designed for extension of Barcelona by Ildefons Cerdà in 1859.



- Legend**
- Lifelong Learning center**
    - Public access
    - Offices
  - Public Circulation**
    - Ramp
    - Open public space
    - Green corridor
  - Community center**
    - Public access
    - Office
    - Outdoor workshops
  - Secondary school**
    - Recreation
    - Service room
    - Classroom
    - Equipment room
    - Vertical circulation
  - Retail and Social services**
    - Retail area
    - Entrance
    - Vertical circulation
  - Sport and Recreation**
    - Gym
    - Outdoor recreation
  - Housing**
    - Family unit
    - Seniors unit
  - Other**
    - Bicycle parking
    - Vegetation
    - Services
    - Car-parking entrance



- Ground floor**
1. Canal square of the courtyard
  2. Main entrance to the area
  3. Hub and bar
  4. Meeting place
  5. Reception and parking service
  6. Learning area
  7. Computer
  8. Multicultural hall
  9. Second-hand shop
  10. Changing rooms
  11. School garden
  12. Learning garden
  13. Terrace
  14. Playground
  15. Outdoor gym
  16. School entrance hall
  17. Lockers
  18. Drop
  19. Teaching building
  20. Kitchen
  21. Community center entrance
  22. Street cafe
  23. Office
  24. Big meeting room
  25. Workshop: Horticulture
  26. Workshop: Carpentry
  27. Workshop: Art
  28. Social services
  29. Parking service



- First floor**
- 30 Learning center terrace
  - 31 Learning area
  - 32 Day care
  - 33 Individual learning
  - 34 Music room
  - 35 Reception and games
  - 36 Teachers meeting room
  - 37 Teachers terrace
  - 38 School terrace
  - 39 Teachers room and kitchen



- Second floor**
- 40 Educational park
  - 41 Meeting rooms
  - 42 Climbing wall
  - 43 Day care
  - 44 Terrace
  - 45 Reception and games
  - 46 School office
  - 47 Library

