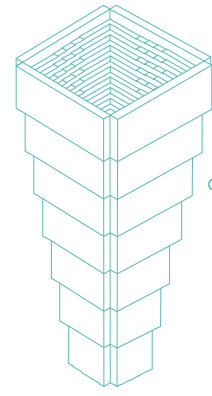




TOWER E
VERTICAL CONNECTION
AND SERVICES

area: 272 m²
height: 74.25/81.15 m
structure: on site concrete



TOWER A
LOCULI TOWER

capacity: 13,440 loculi
area at level 0: 253 m²
height: 96.6 m
structure: concrete
bearing walls



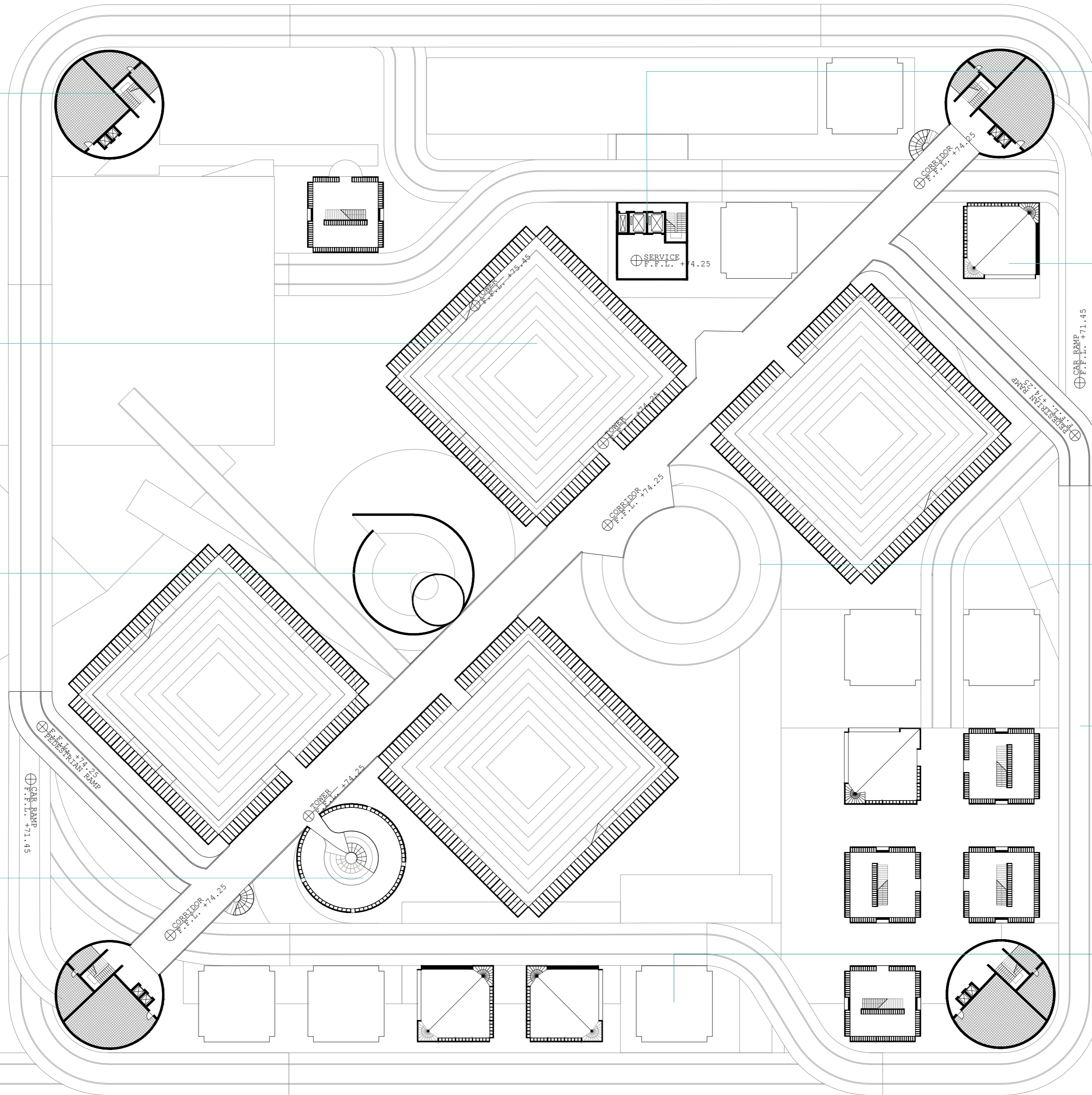
CREMATORIUM

area at level 3: 316 m²
height: 87.05 m
structure: on site concrete



TOWER D
COLOMBARIUM FOR
CINERARY URNS

capacity: 10,300 loculi
area: 100 m²
height: 88.35 m
structure: concrete
bearing walls



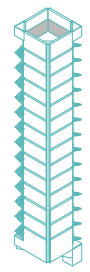
TOWER F
SERVICE TOWER

area at level 0: 280 m²
height: 81.15 m
structure: concrete
bearing walls



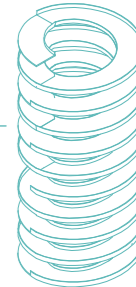
TOWER C
REMAINS - CINERARY URNS

capacity: 6,145 loculi
area at level 0: 79 m²
height: 74.25/81.15 m
structure: on site concrete



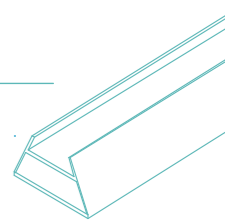
PROCESSION RAMP
FUNERAL PROCESSION RAMP
FOR HEARS AND PEDESTRIAN

width: 7 m
height: 96.6 m
structure: on site
concrete



RAMP
2 LEVELS PEDESTRIAN
AND CAR RAMP

width: 7m
length: 1750 m
structure: on site
concrete



TOWER C
REMAINS - OSSUARY

capacity: 27,000 loculi
area: 153 m²
height: 60.45/67.35
/74.25/81.15 m
structure: concrete
bearing walls

