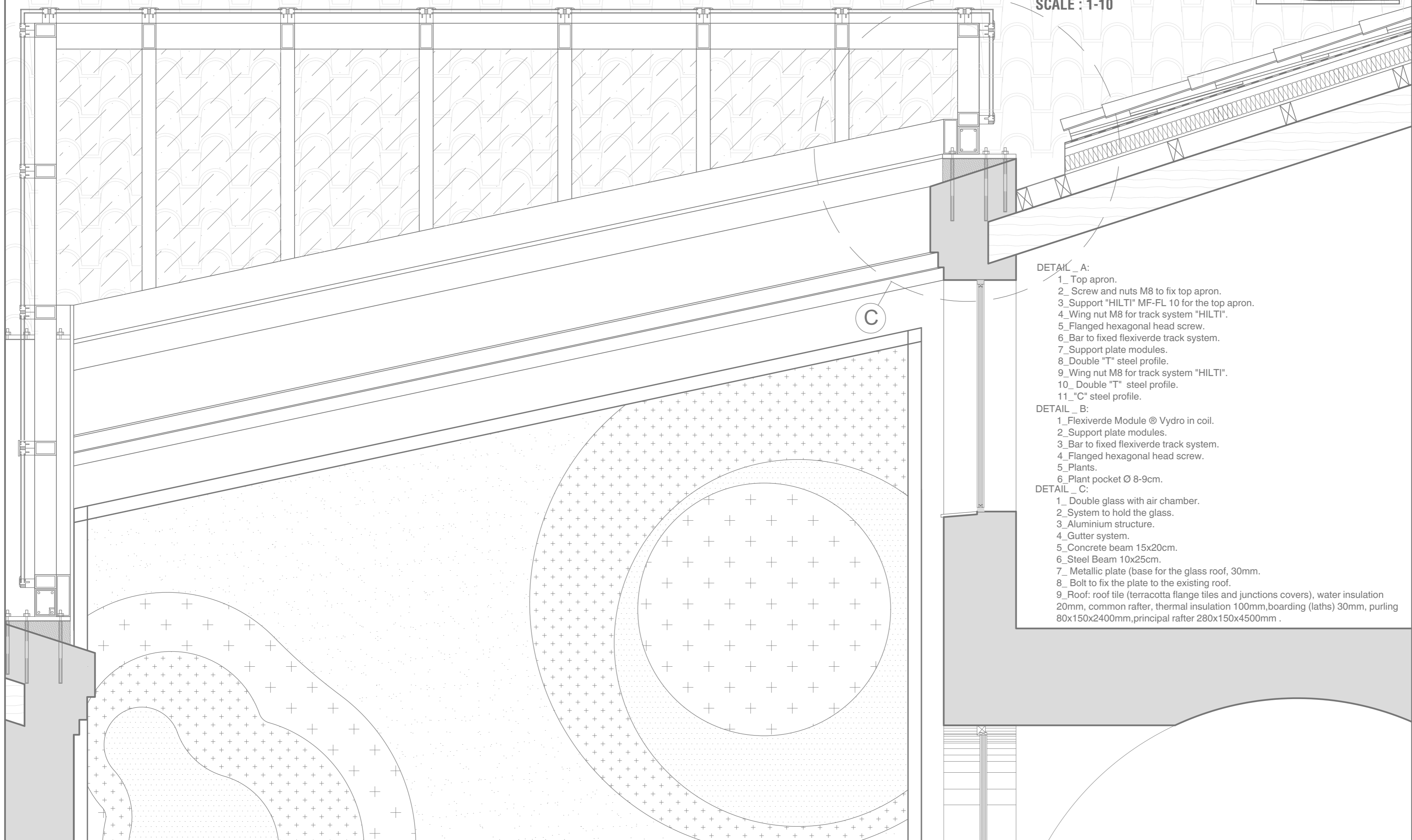


CHAPTER 5 : PROJECT - PART 5

FRONT VIEW GREEN WALL DETAIL
SCALE: 1-20
PLAN ELEVATOR AREA
SCALE: 1-20
DETAILS A B & C
SCALE: 1-10



DETAIL _ A:

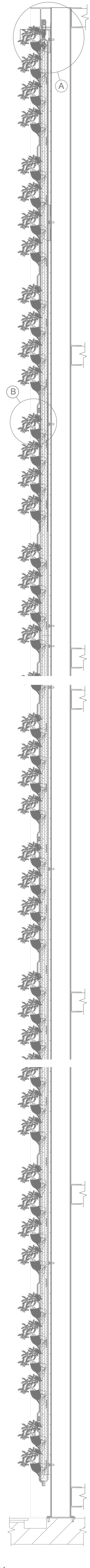
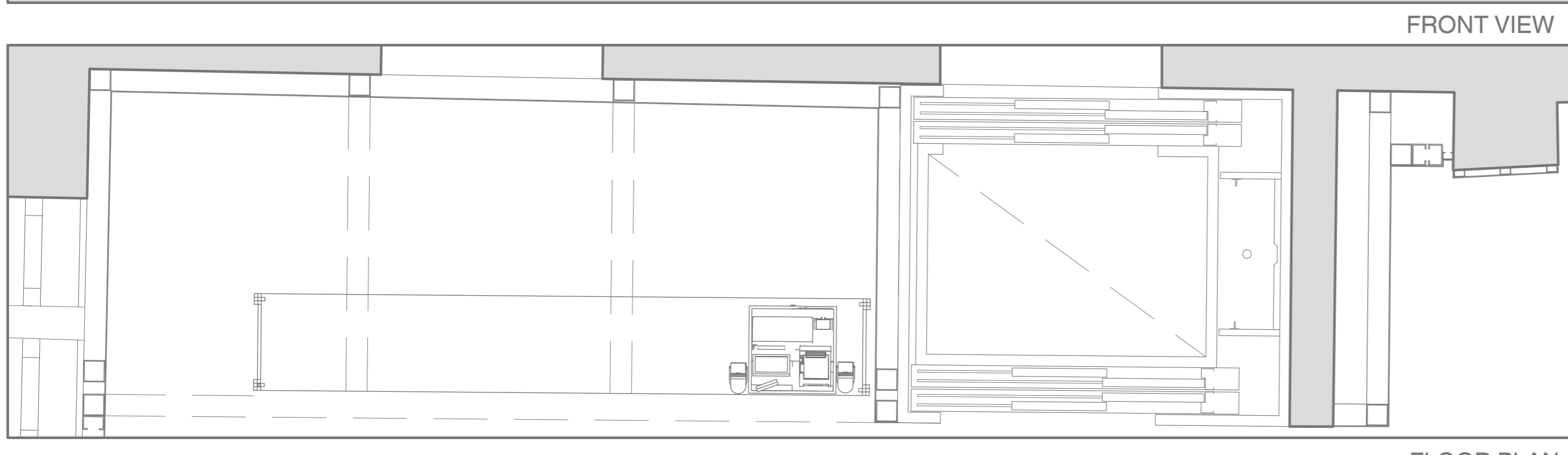
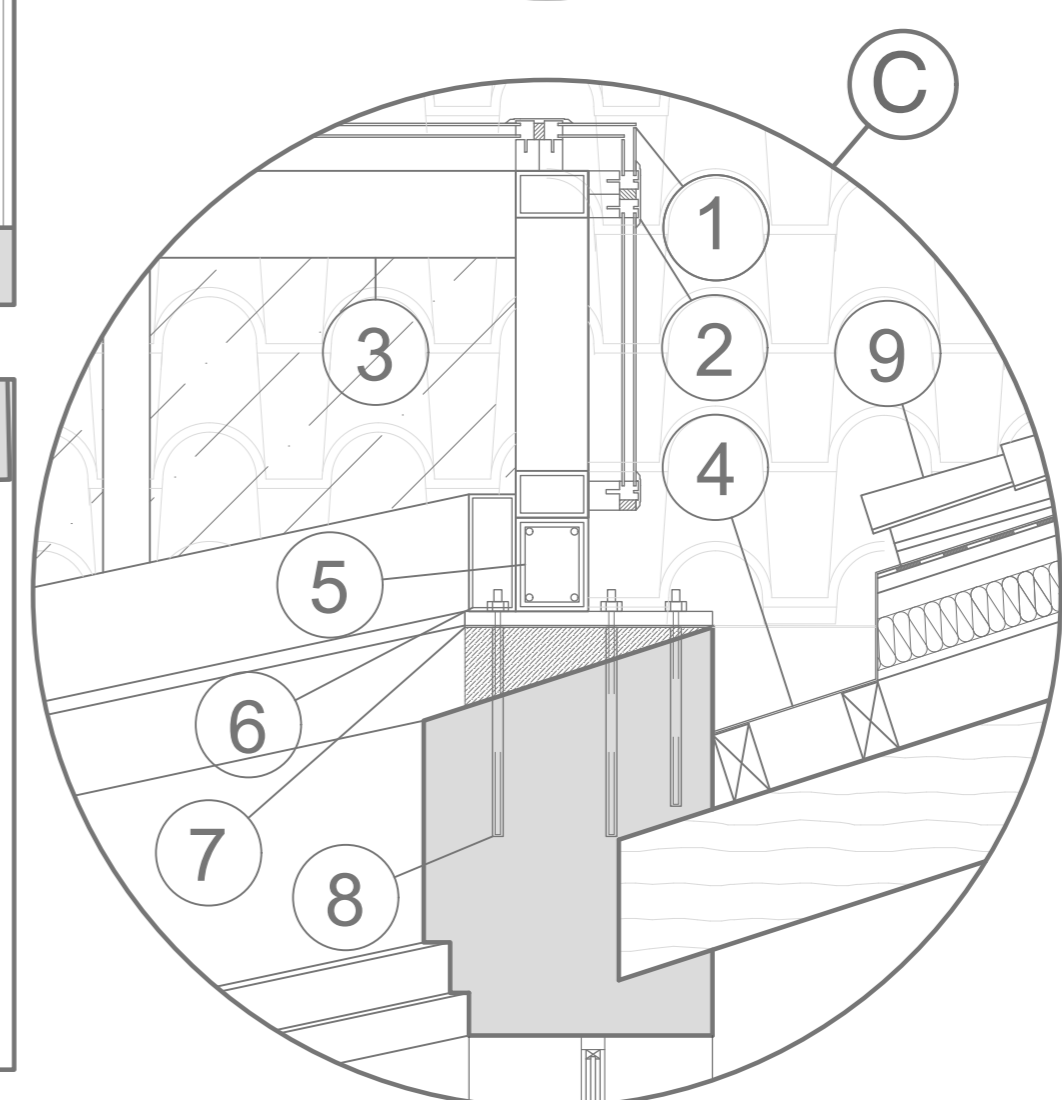
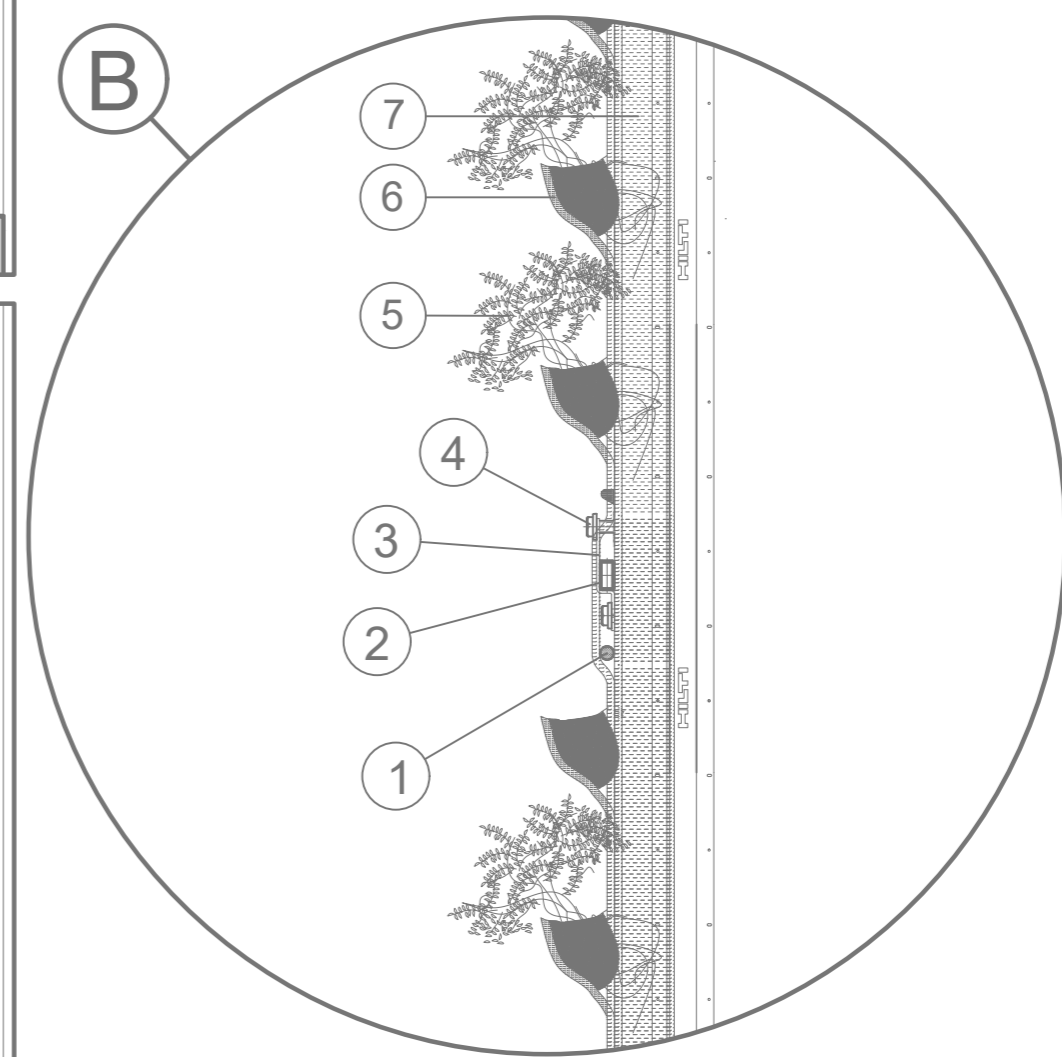
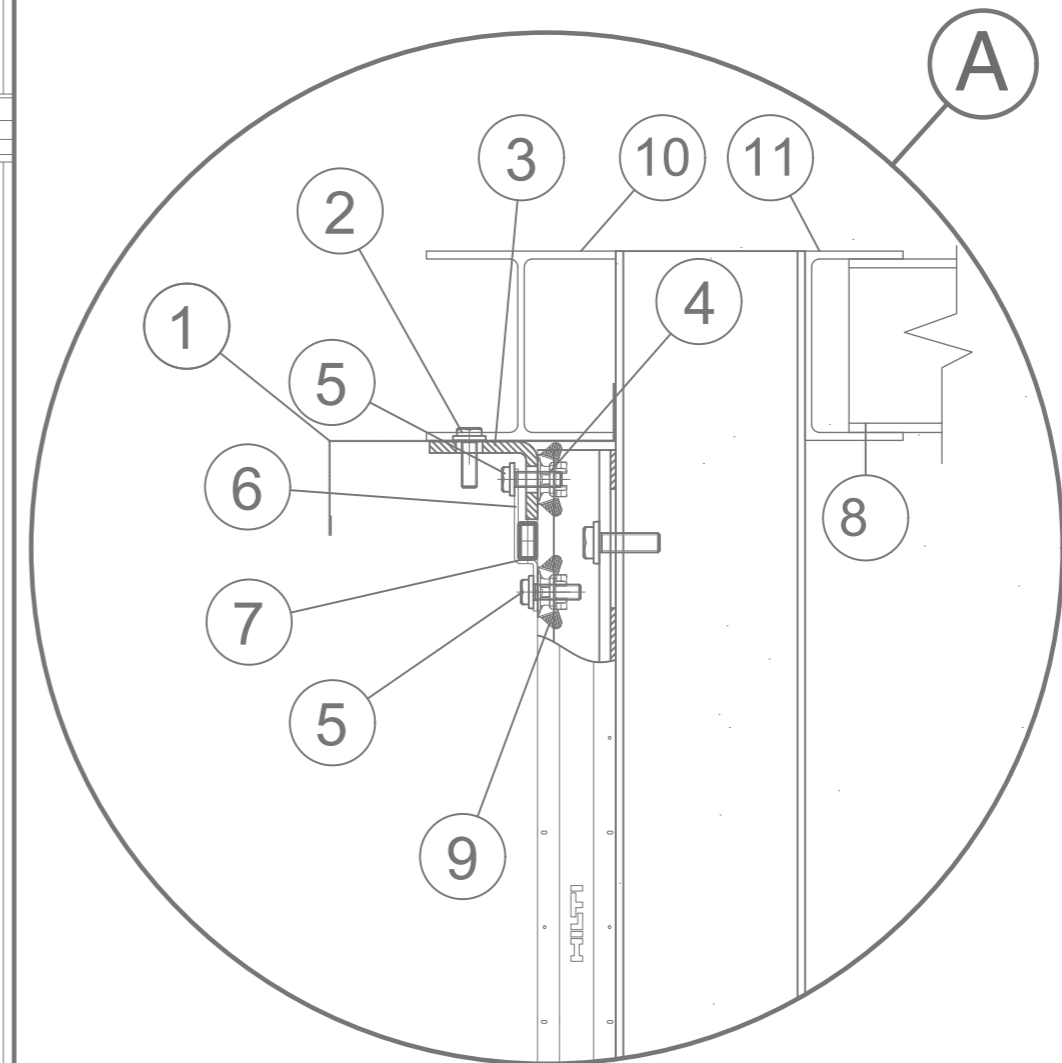
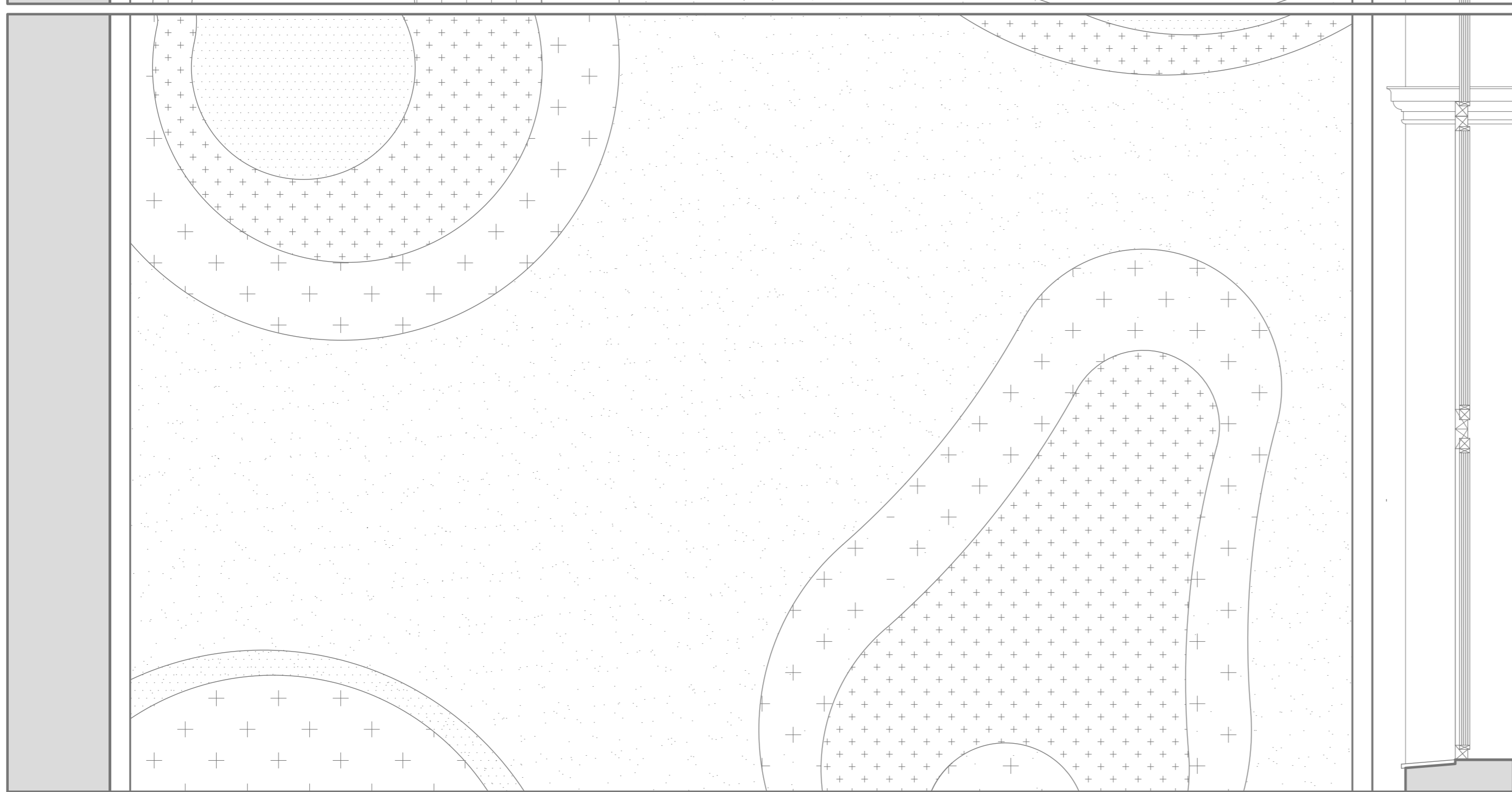
- 1_ Top apron.
- 2_ Screw and nuts M8 to fix top apron.
- 3_ Support "HILTI" MF-FL 10 for the top apron.
- 4_ Wing nut M8 for track system "HILTI".
- 5_ Flanged hexagonal head screw.
- 6_ Bar to fixed flexiverde track system.
- 7_ Support plate modules.
- 8_ Double "T" steel profile.
- 9_ Wing nut M8 for track system "HILTI".
- 10_ Double "T" steel profile.
- 11_ "C" steel profile.

DETAIL _ B:

- 1_ Flexiverde Module @ Vydro in coil.
- 2_ Support plate modules.
- 3_ Bar to fixed flexiverde track system.
- 4_ Flanged hexagonal head screw.
- 5_ Plants.
- 6_ Plant pocket Ø 8-9cm.

DETAIL _ C:

- 1_ Double glass with air chamber.
- 2_ System to hold the glass.
- 3_ Aluminium structure.
- 4_ Gutter system.
- 5_ Concrete beam 15x20cm.
- 6_ Steel Beam 10x25cm.
- 7_ Metallic plate (base for the glass roof, 30mm).
- 8_ Bolt to fix the plate to the existing roof.
- 9_ Roof: roof tile (terracotta flange tiles and junctions covers), water insulation 20mm, common rafter, thermal insulation 100mm, boarding (laths) 30mm, purling 80x150x2400mm, principal rafter 280x150x4500mm.



FRONT VIEW

FLOOR PLAN

SIDE SECTION