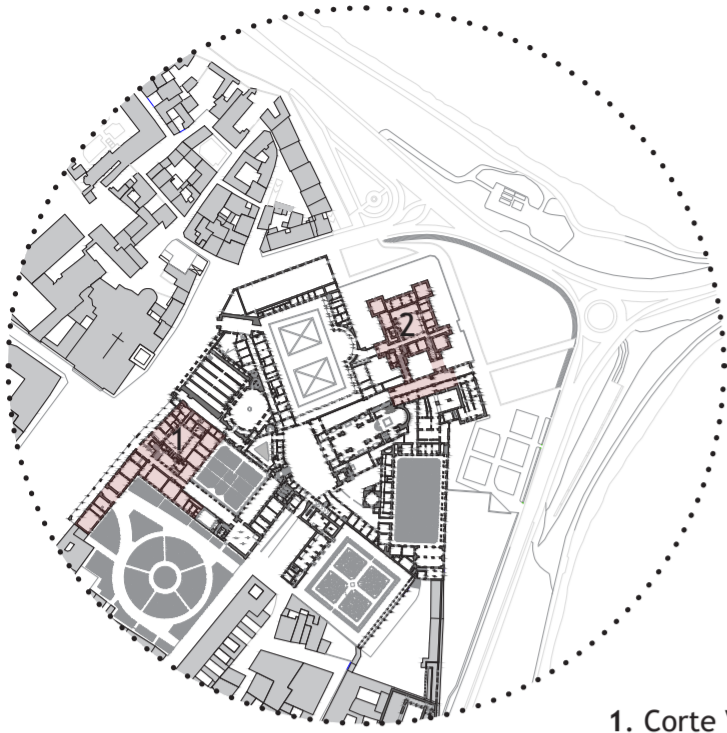
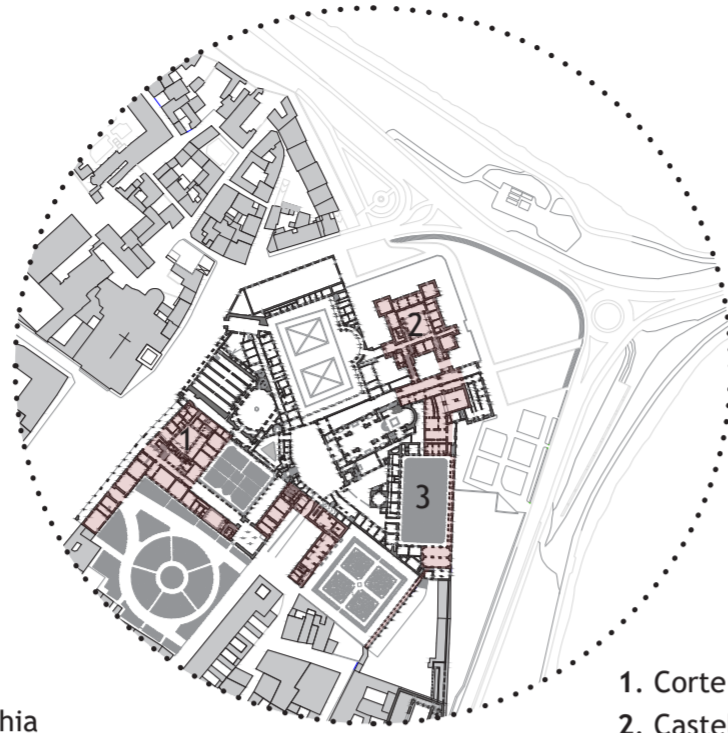


THE DUCAL PALACE OF MANTOVA  
Historical Development



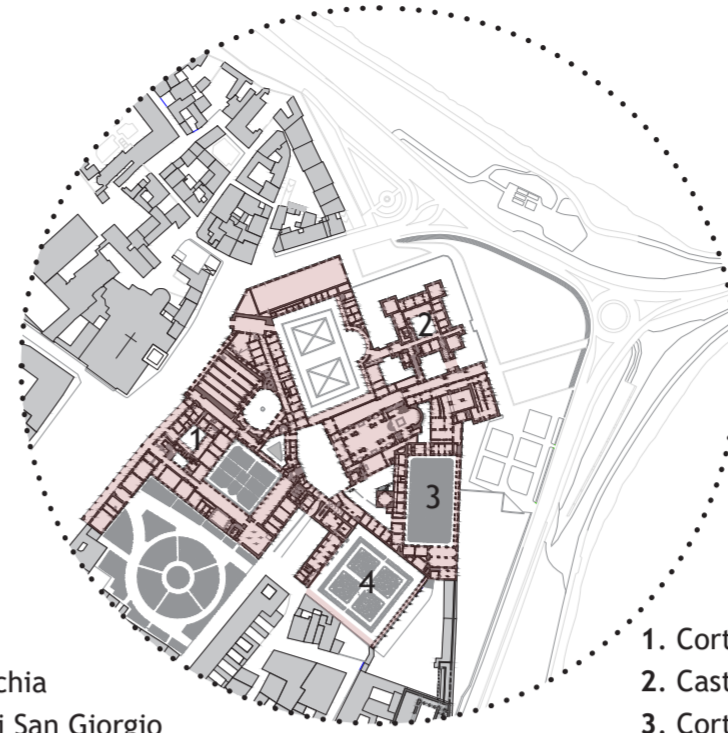
1. Corte Vecchia
2. Castello di San Giorgio

1440



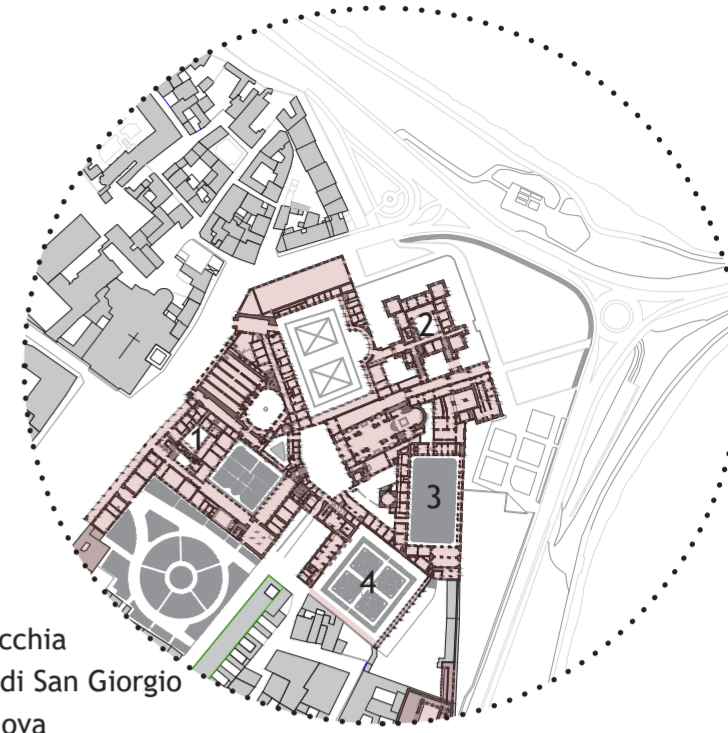
1. Corte Vecchia
2. Castello di San Giorgio
3. Corte Nuova

1540

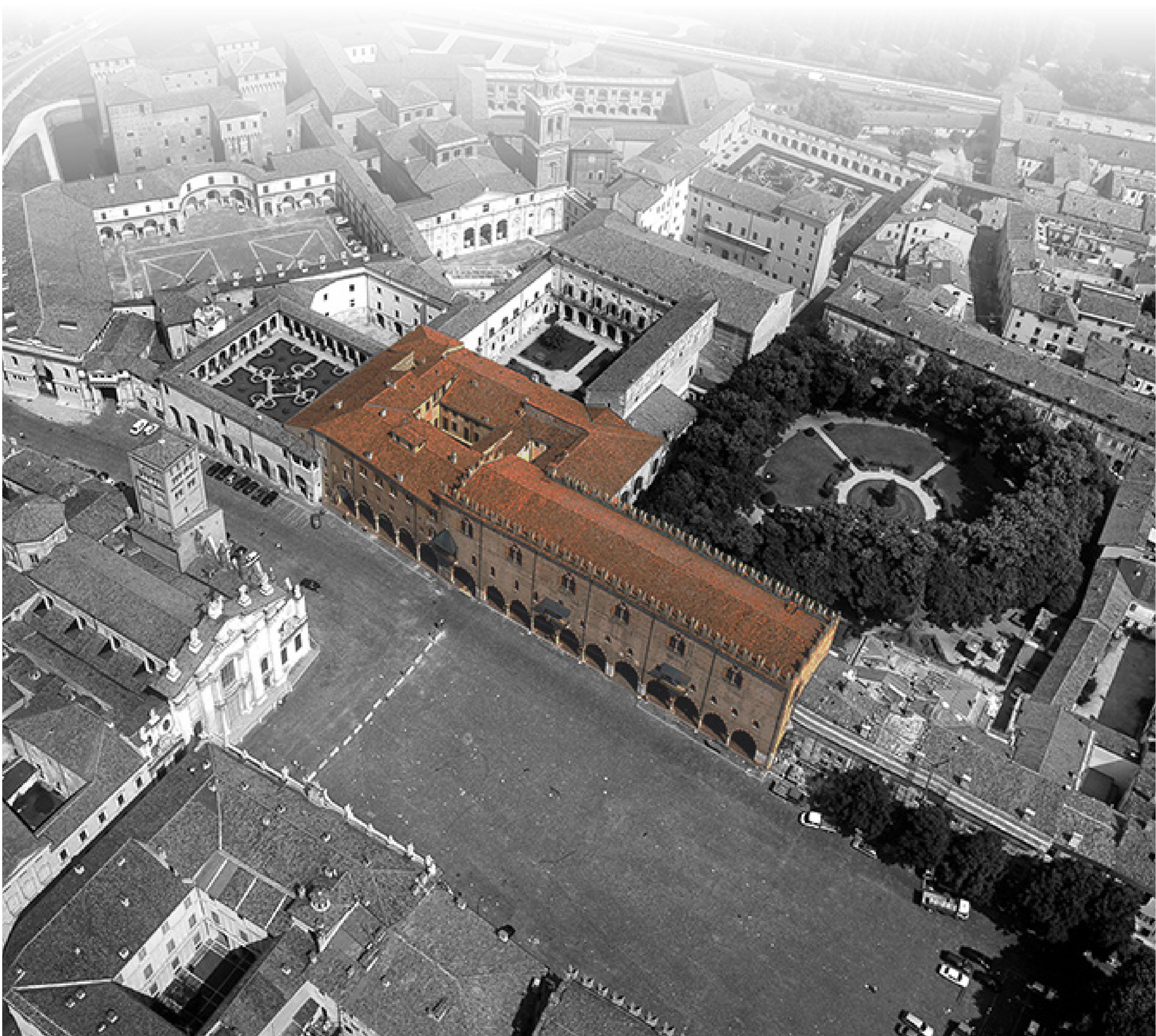


1. Corte Vecchia
2. Castello di San Giorgio
3. Corte Nuova
4. Domus Nova

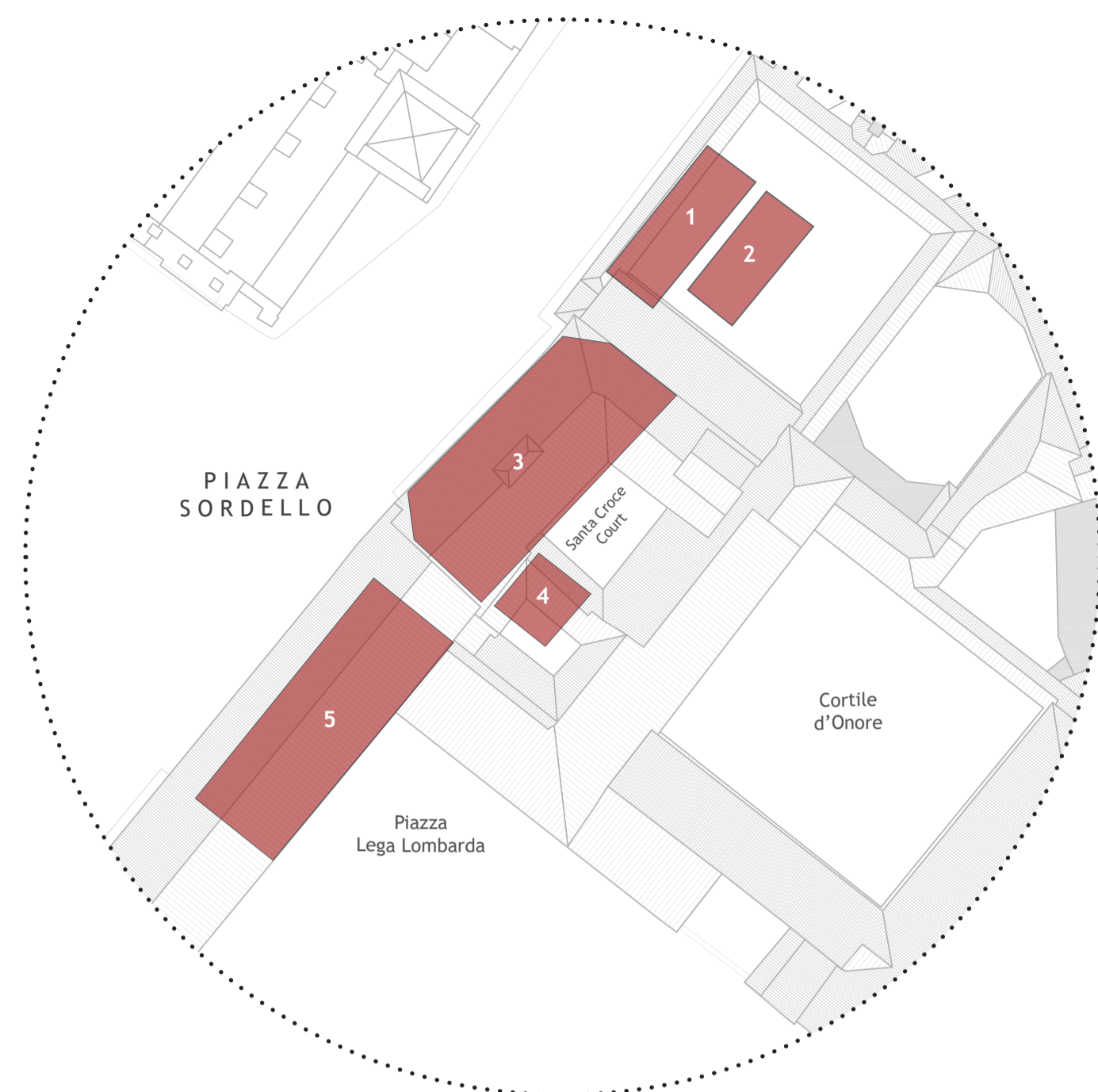
1630



1859

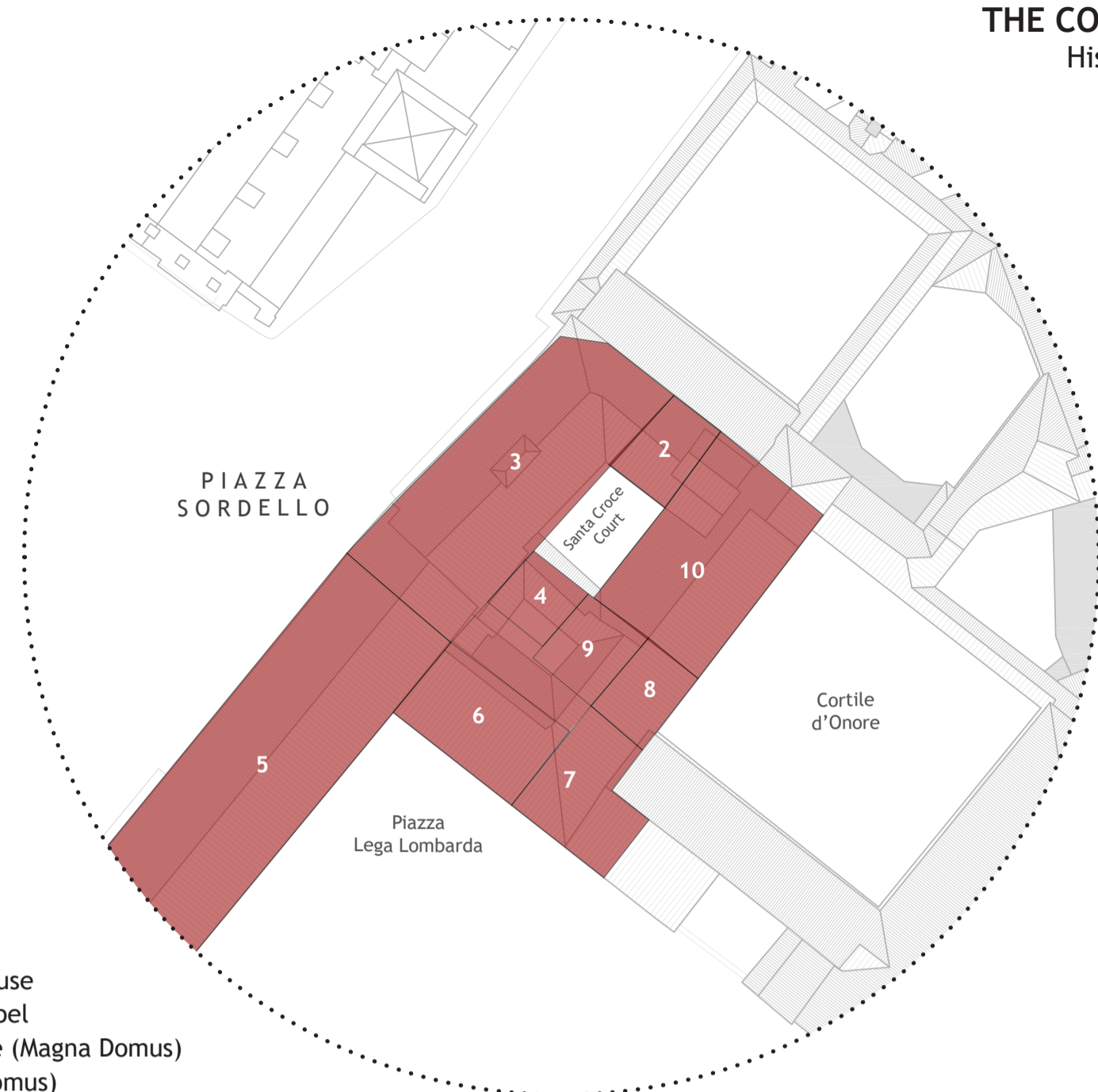


THE CORTE VECCHIA COMPLEX  
Historical Development



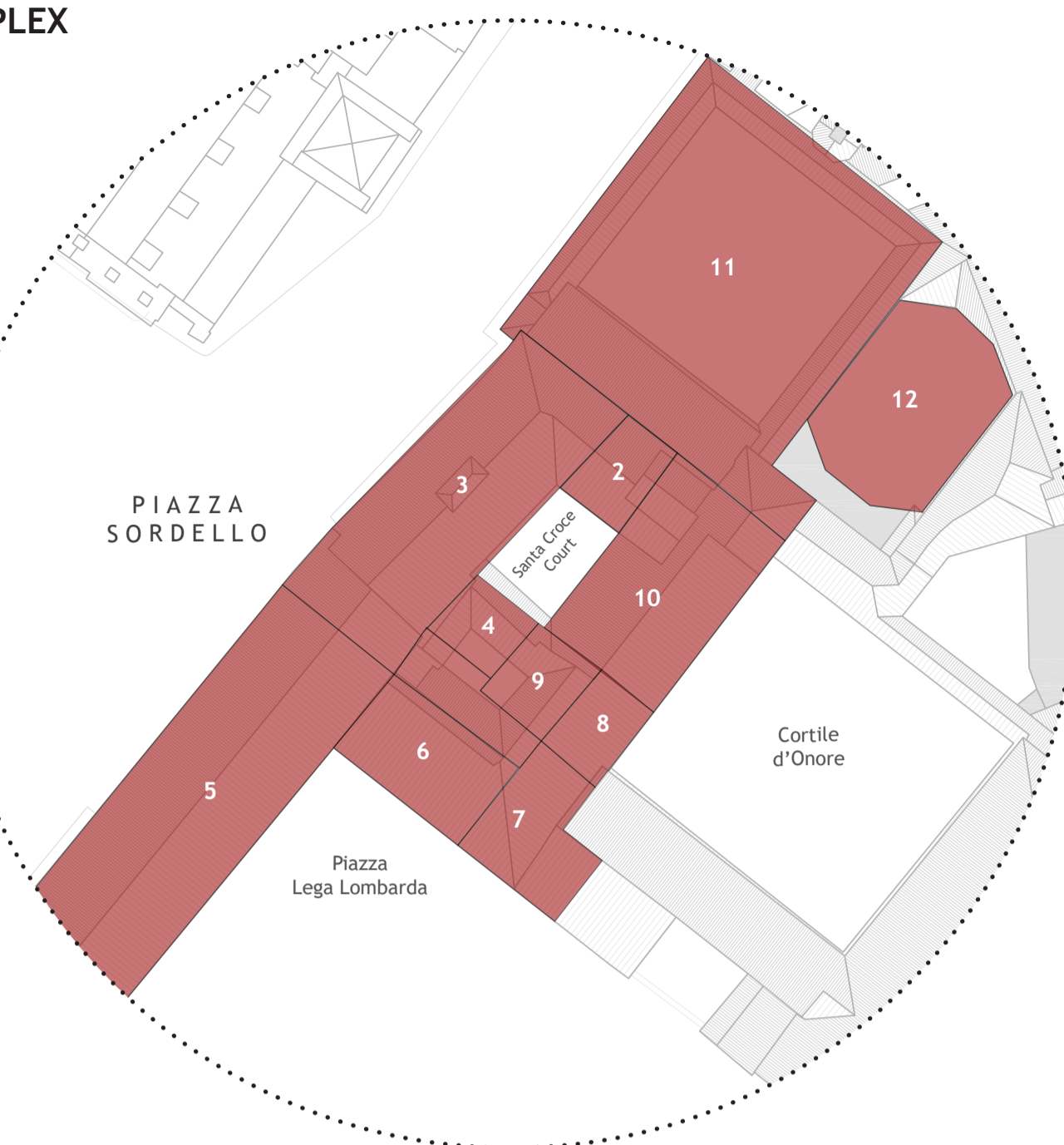
- 1. Mainardino's house
- 2. Santa Croce chapel
- 3. Communal house (Magna Domus)
- 4. Tower (Magna Domus)

1325



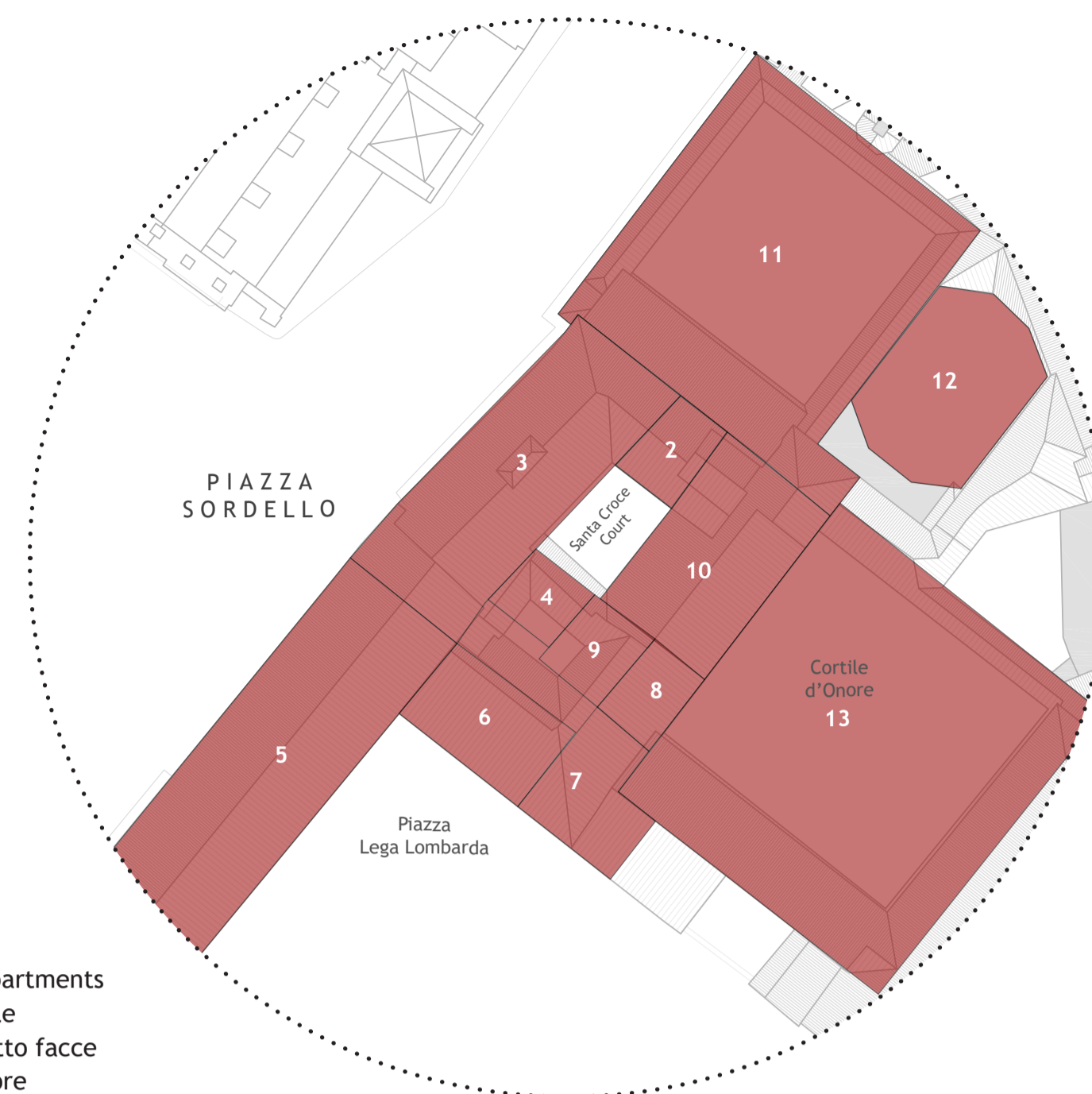
- 5. Palazzo del Capitano
- 6. Palazzo del Pisanello
- 7. Sala dei Papi
- 8. Medieval building

1425



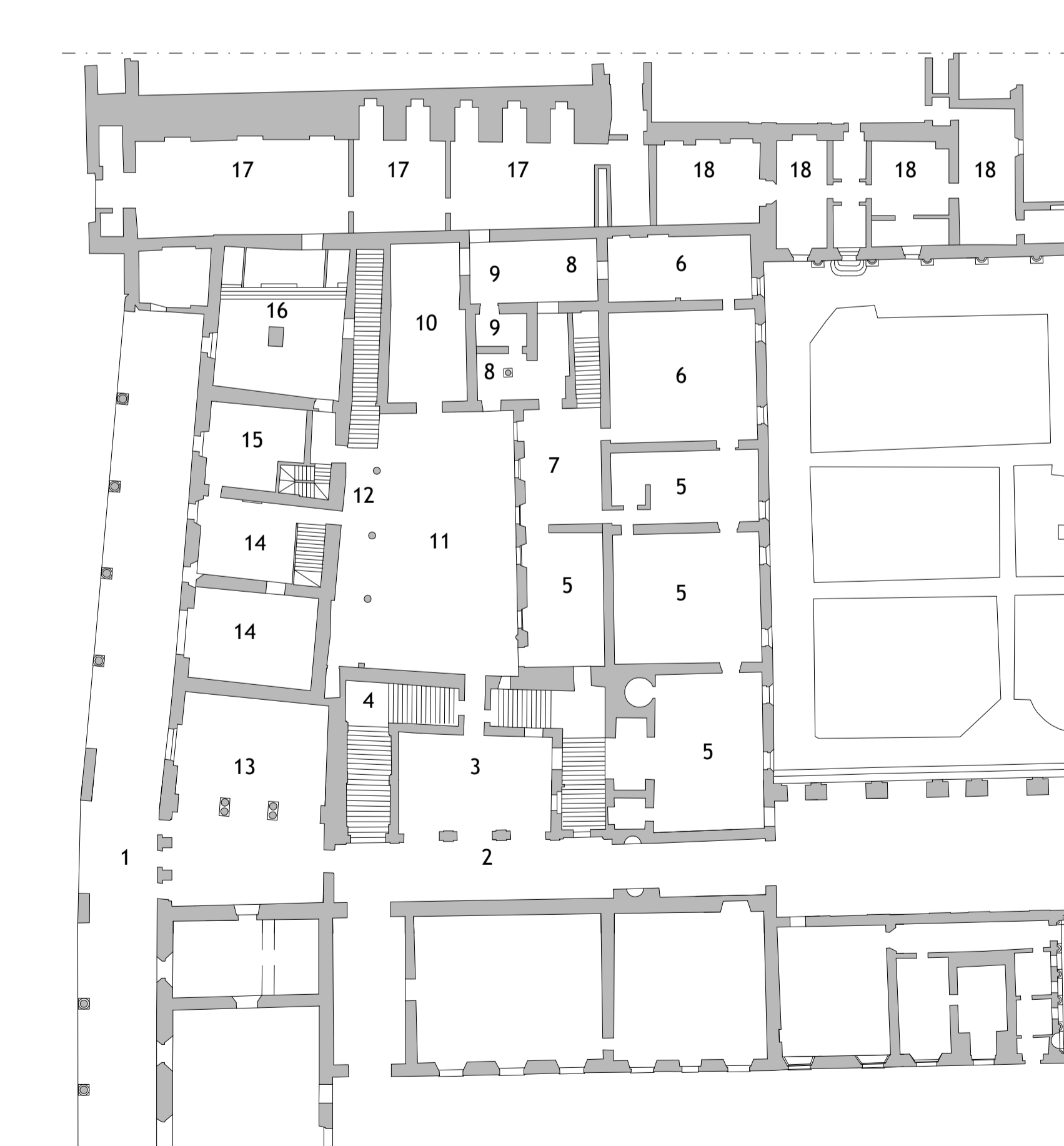
- 9. Tower house
- 10. Santa Croce apartments
- 11. Giardino pensile
- 12. Cortile delle otto facce
- 13. Giardino d'Onore

1580



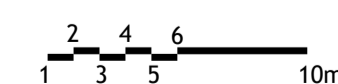
1700

GROUND FLOOR PLAN OF CORTE VECCHIA, 1773 Gaetano Crevola (Vienna, Hofkammerarchiv)

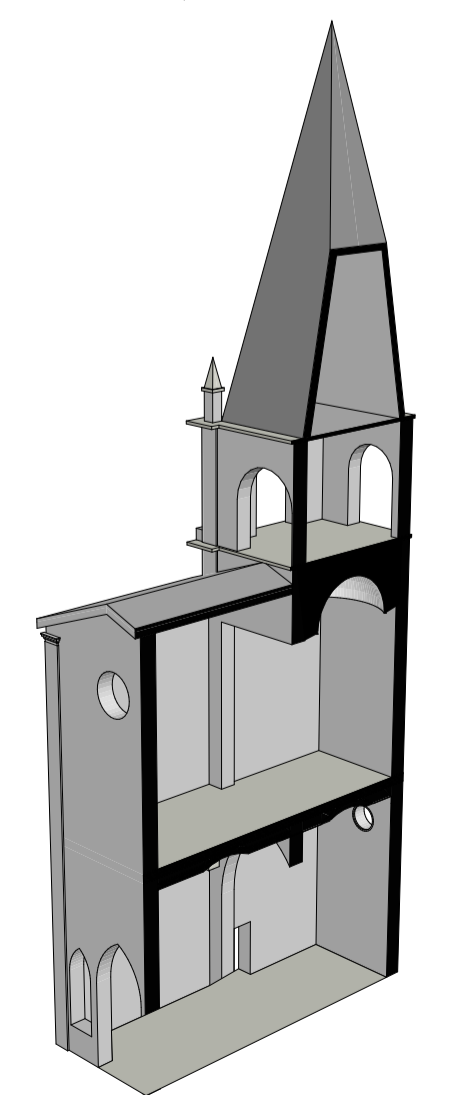
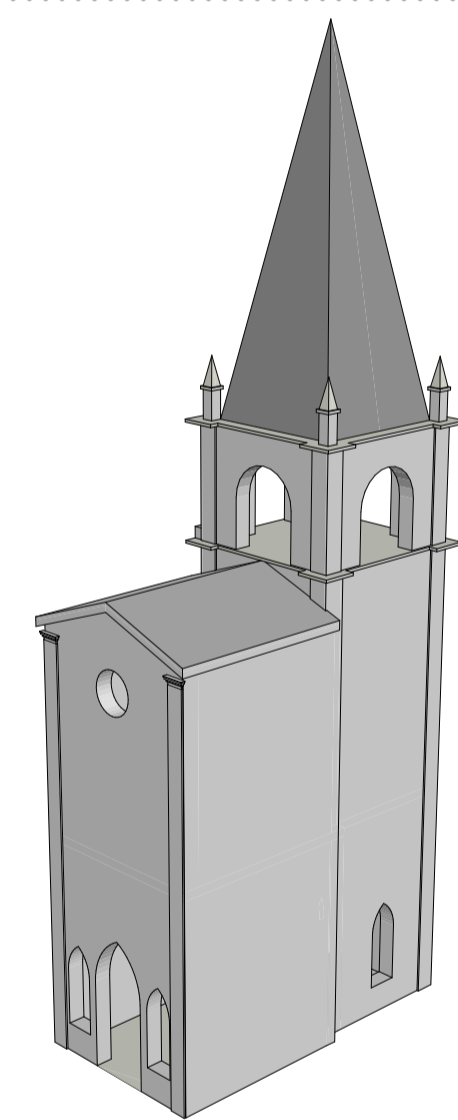


Caption:

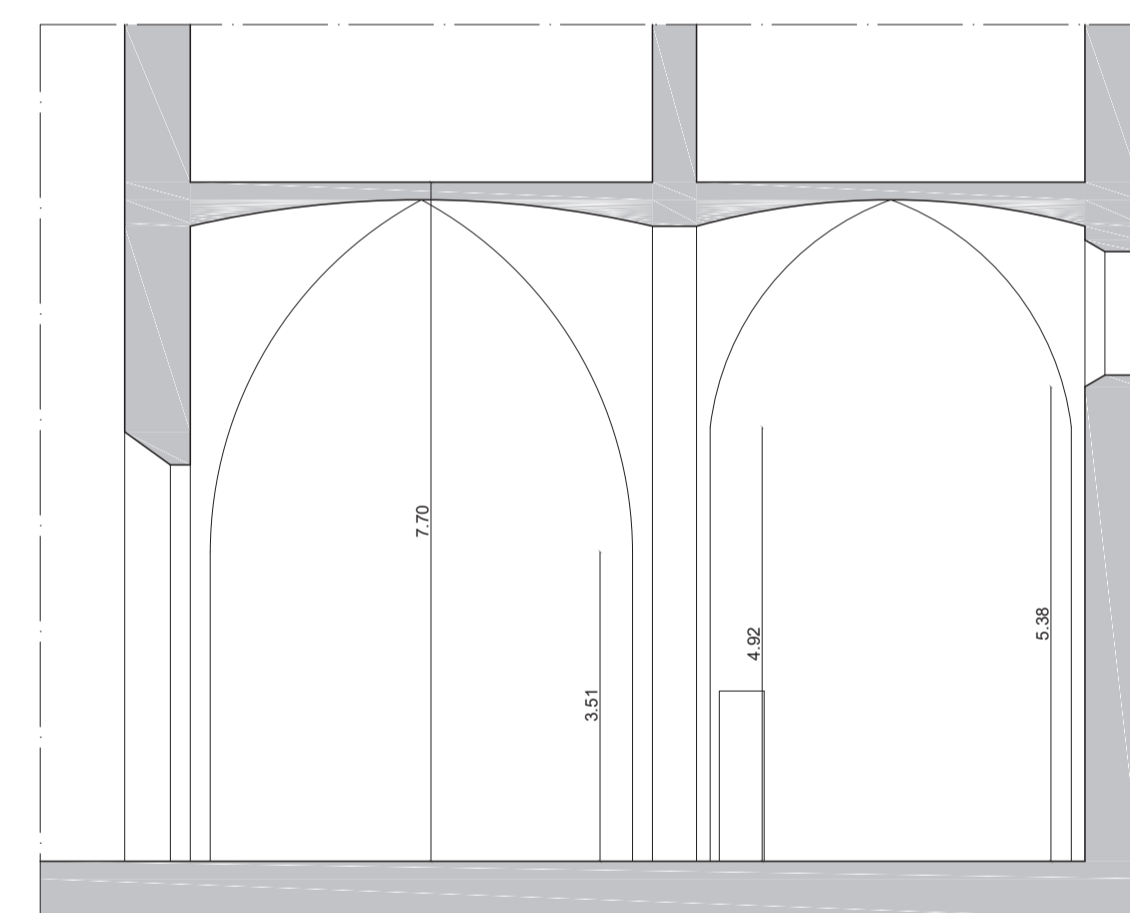
- 1. Porch facing Sordello square
- 2. Loggia
- 3. Court in the middle of the staircase
- 4. Stairs leading to the apartments
- 5. Kitchens
- 6. Pantry
- 7. Entrance hall to the pantry and stairs
- 8. Open court
- 9. Spaces for services
- 10. Pantry (before S. Croce Chapel)
- 11. S. Croce courtyard
- 12. Loggia of the Refectory Staircase
- 13. Refectory Staircase
- 14. Room called "De Svizzeri"
- 15. Pantry
- 16. Entrance hall to the "Accademia del Disegno"
- 17. Spaces for the "Accademia del Disegno"
- 18. Rooms for family use



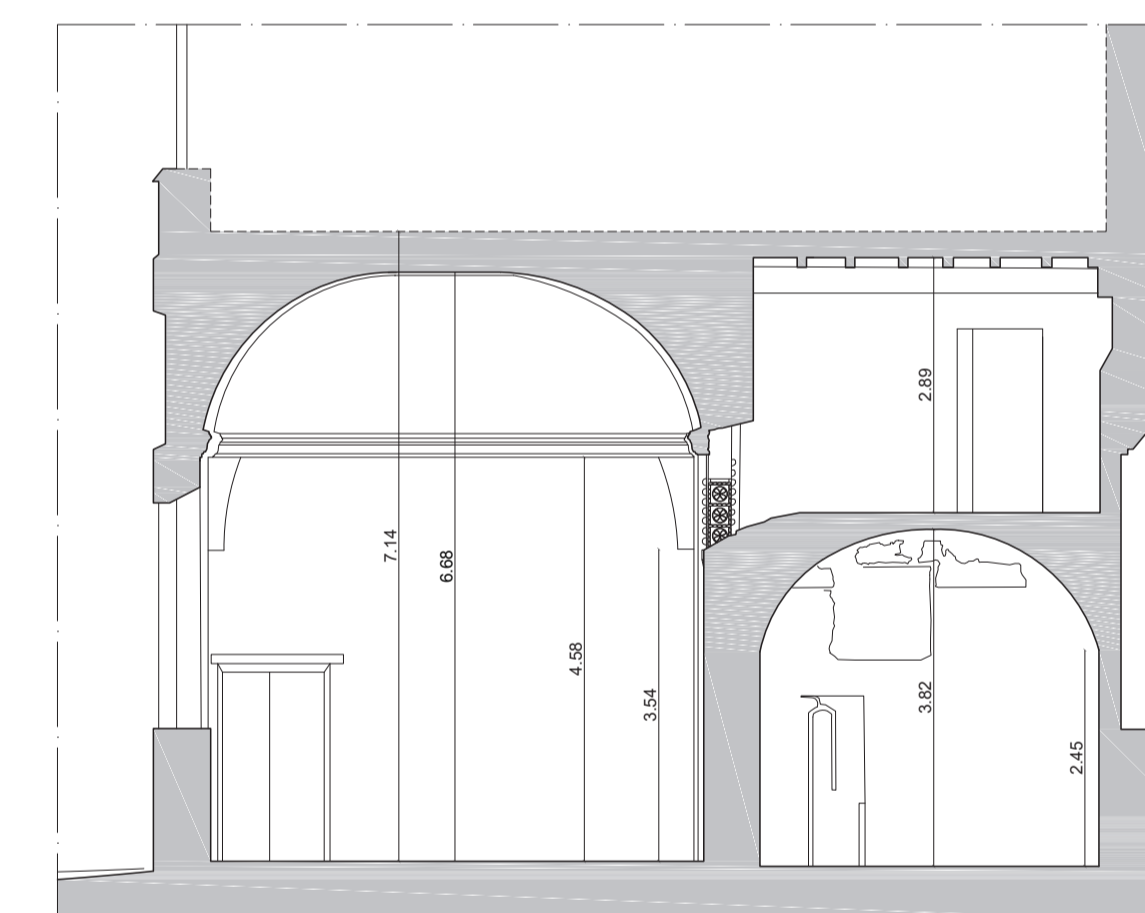
THE PALATINE CHAPEL OF SANTA CROCE



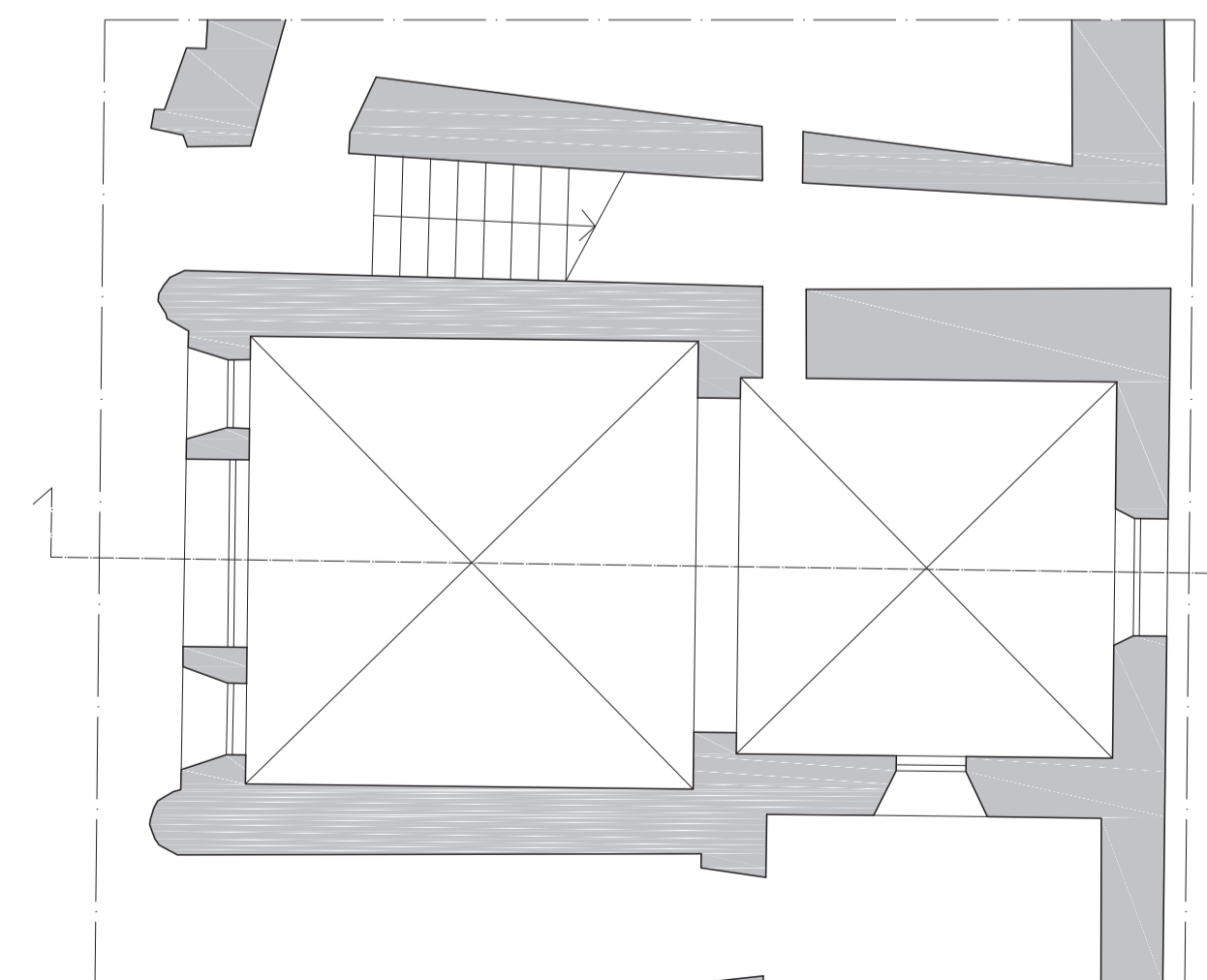
Reconstruction of the original chapel



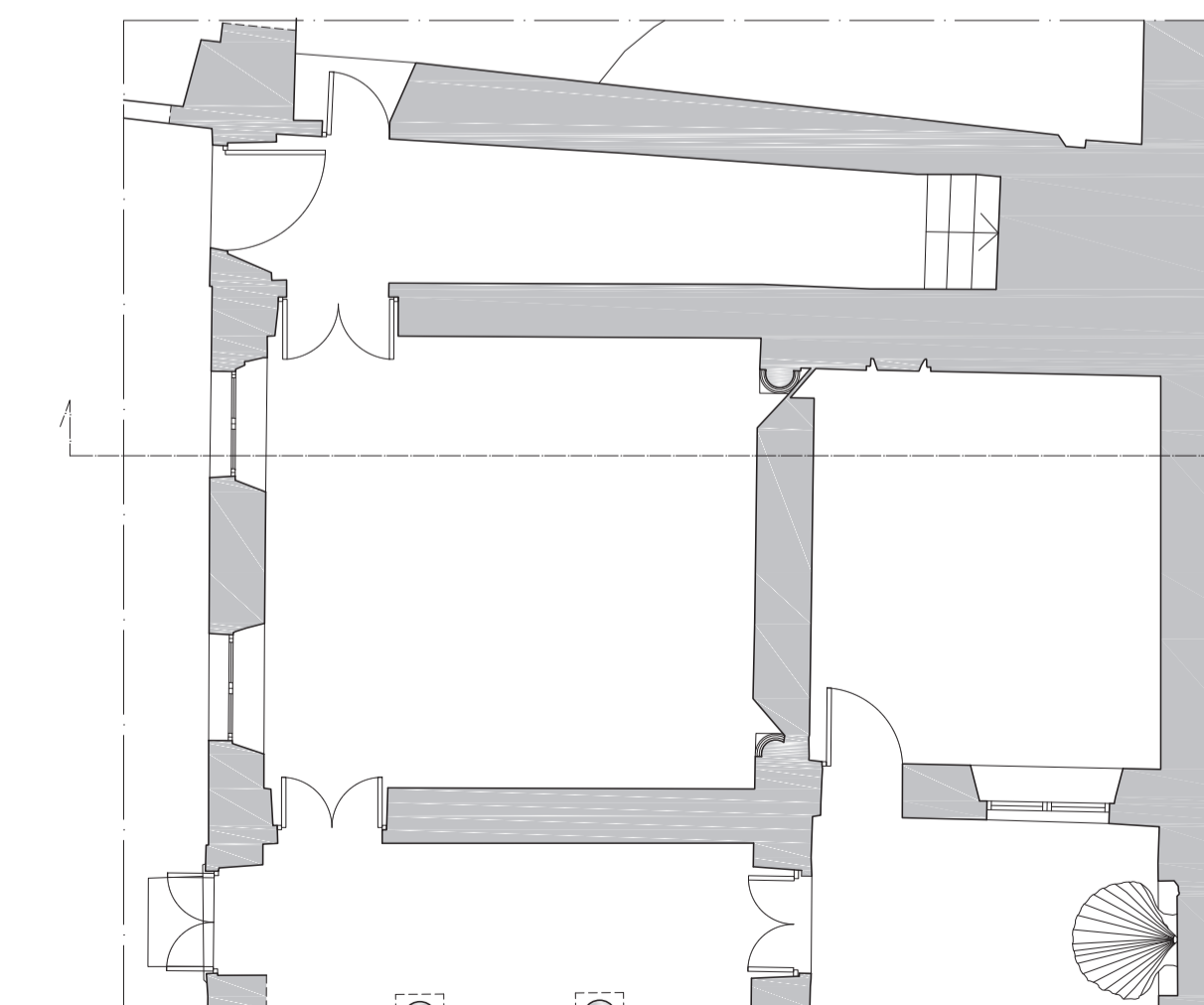
Hypothetical section made by Prof. S. L'Occaso



Actual section

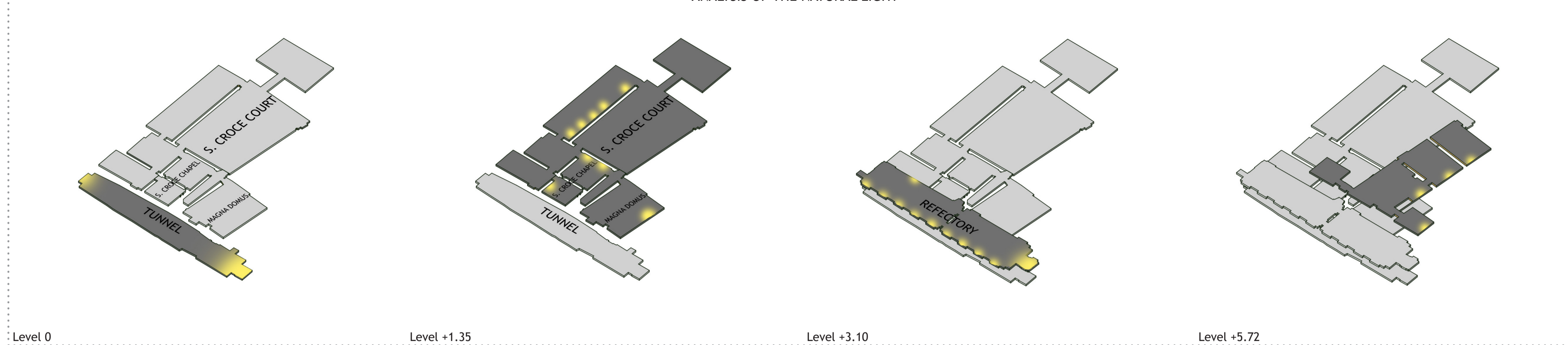


Hypothetical plan made by Prof. S. L'Occaso



Actual plan

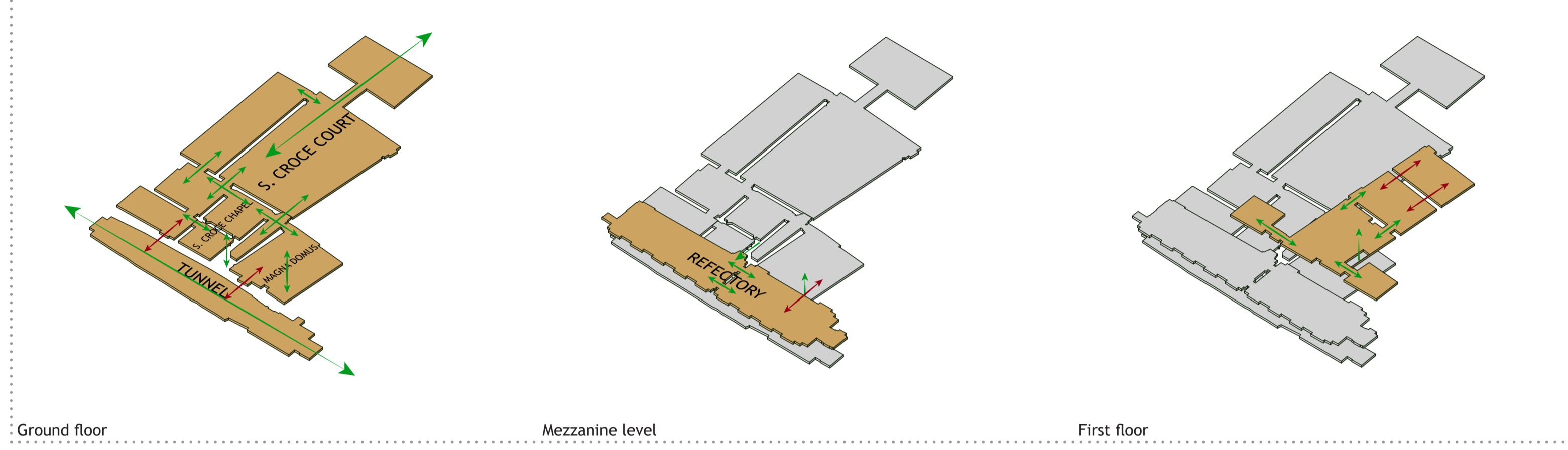
ANALYSIS OF THE NATURAL LIGHT



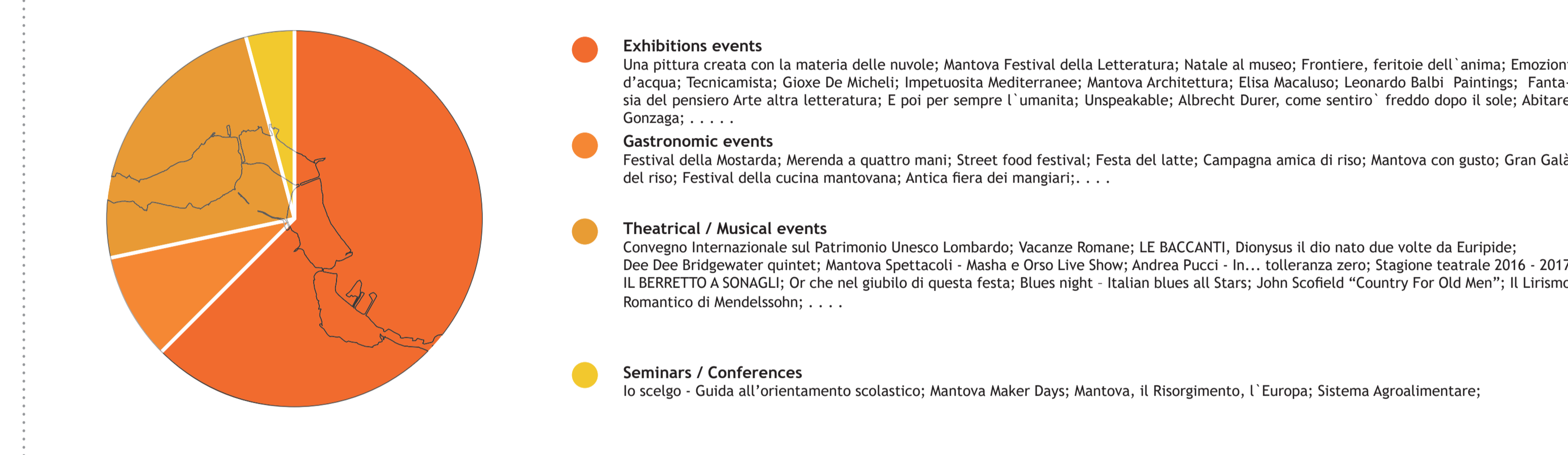
SWOT ANALYSIS

<ul style="list-style-type: none"> <li>Historical and artistic heritage of the place</li> <li>Tourist attraction given by the Duca Palace</li> <li>Central position in the palace</li> <li>Artistic and historical value of the rooms</li> <li>Different kind of rooms-spaces</li> <li>Connection with the city</li> <li>Central position in the town</li> <li>Independent complex from the museum path</li> <li>The complex is part of the oldest nucleus of the palace</li> <li>Good condition of some spaces</li> <li>Artistic value of some rooms</li> </ul>	<ul style="list-style-type: none"> <li>Accessibility, a poor visibility from the square</li> <li>Most of the spaces are not in good condition</li> <li>Spaces organized on different levels</li> <li>Different architectural language of the spaces</li> <li>Poor natural lighting of some spaces</li> </ul>
<p><b>Strengths</b></p> <ul style="list-style-type: none"> <li>Double independent entrances (from the square and from the museum)</li> <li>Economic incomes additional services, independent services</li> <li>Integration with museum activity</li> <li>Good position of the complex</li> <li>Presence of open spaces</li> <li>Creation of an independent system from the museum</li> </ul>	<p><b>Weaknesses</b></p> <ul style="list-style-type: none"> <li>Presence of old stairs, structural barrier</li> <li>Structural problems</li> <li>Lack of investors</li> <li>What we think in the project won't work in the future</li> <li>Consolidations can bring up new problems</li> <li>Interference with the other part of the building</li> </ul>
<p><b>Opportunities</b></p>	<p><b>Threats</b></p>

CONNECTION ANALYSIS



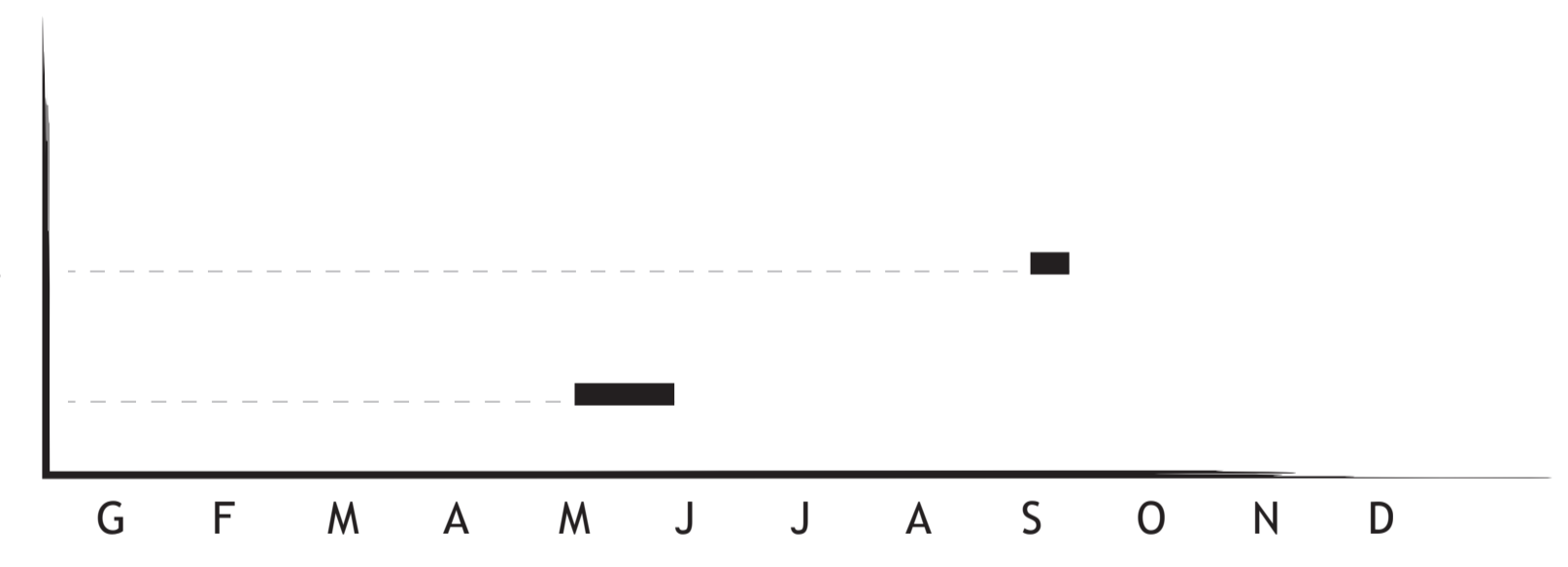
ANALYSIS OF THE EVENTS IN MANTUA



RECONSTRUCTION PLAN OF CORTE VECCHIA



Mantova F. della Letteratura  
Mantova Architettura

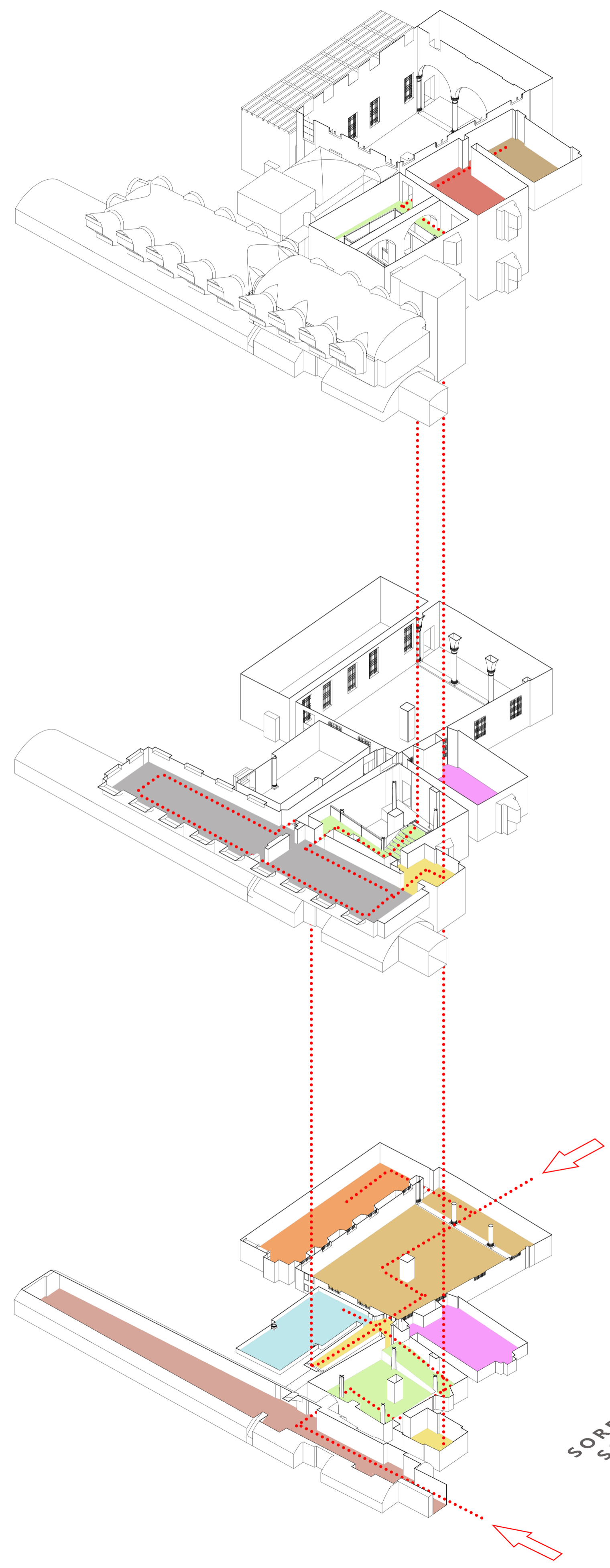
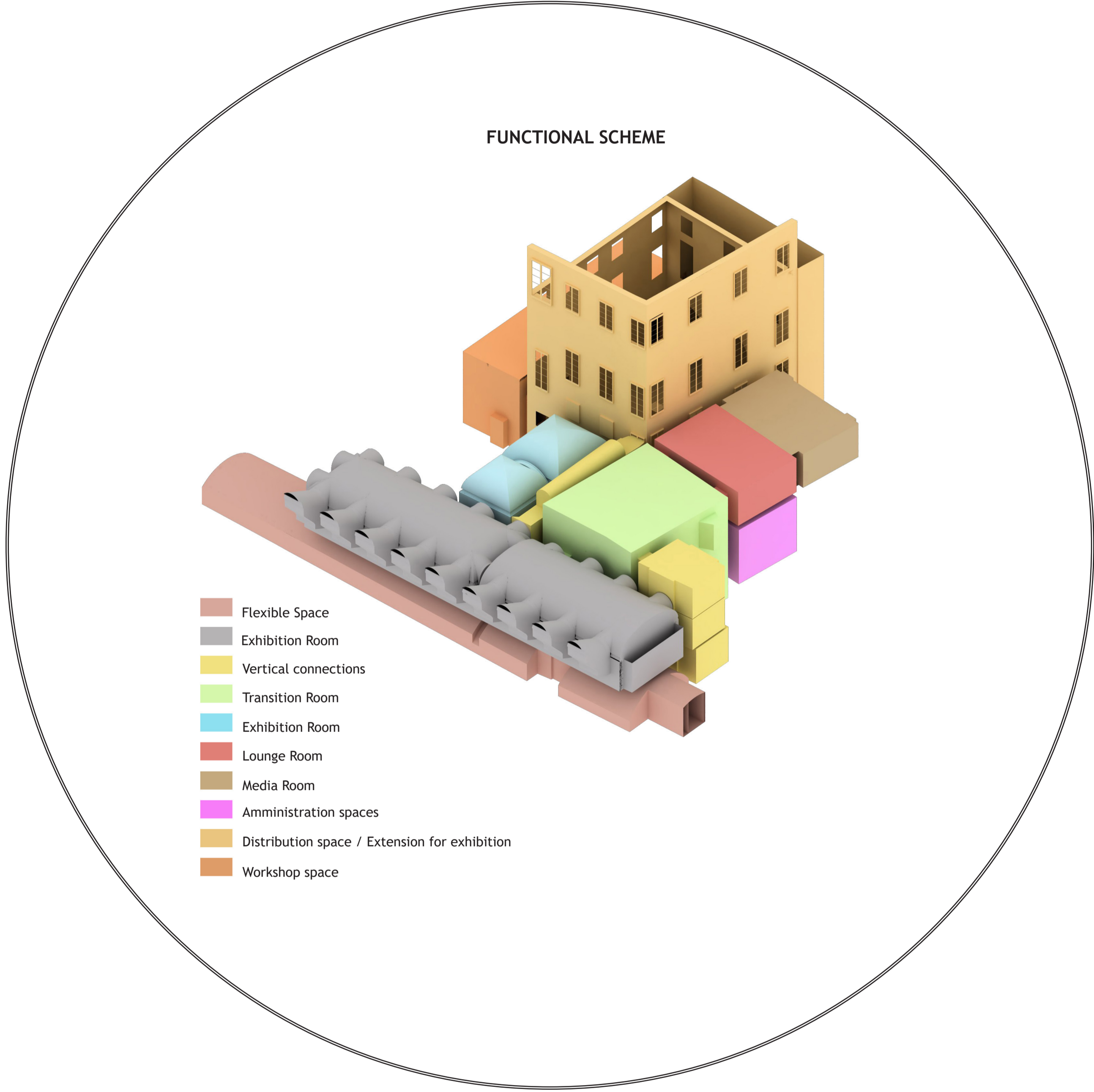


MANTOVA FESTIVAL DELLA LETTERATURA				MANTOVA ARCHITETTURA		
Conferences/Seminars	Readings	Workshops	Exhibitions	Conferences/Seminars	Exhibitions	Workshops
<ul style="list-style-type: none"> <li>La biblioteca elegante;</li> <li>Una città in libri;</li> <li>Mantova lectures;</li> <li>Dialoghi d'europa in musica;</li> <li>L'immagine della città;</li> <li>Quattro passi ad Alessandria;</li> <li>Di famiglia in famiglia;</li> <li>Parole chiave;</li> </ul>	<ul style="list-style-type: none"> <li>Lettura in piazza;</li> <li>Silent book;</li> <li>Il libro dei vent'anni;</li> <li>Lettere della notte;</li> <li>Pitching in piazza;</li> <li>Vocabolario Europeo;</li> <li>Piccoli versi;</li> </ul>	<ul style="list-style-type: none"> <li>Officina Prototipi;</li> <li>Scritture Giovani;</li> <li>Meglio di un romanzo;</li> </ul>	<ul style="list-style-type: none"> <li>Immagine per la città;</li> <li>Lettore tra creatività e memoria;</li> <li>Unspeakable;</li> <li>Giuseppe de Luigi;</li> </ul>	<ul style="list-style-type: none"> <li>Eduardo Souto de Moura;</li> <li>Mario Botta;</li> <li>Smiljan Radic;</li> <li>Paulo David;</li> <li>Tony Giannone;</li> <li>Cruz y Ortiz;</li> <li>Isa Stein;</li> <li>Liu Kecheng;</li> <li>Stefano Arienti;</li> <li>Marcio e Gabriel Kogan</li> </ul>	<ul style="list-style-type: none"> <li>Giorgio Grassi: disegni scelti;</li> <li>E. Souto de Moura: Sketches and architectural studies;</li> <li>Il palazzo dei Gonzaga: Architettura nel tempo;</li> </ul>	<ul style="list-style-type: none"> <li>University workshops</li> </ul>

- Arrangement and renovation during the Austrian period for a new living premises;
- Construction of new intermediate slabs and walls in the former S. Croce church
- Changing of the façade of the former S. Croce church for the premises renovation;
- Demolitions in the Refettorio spaces;
- Creation of a new stairs for the upstairs premises;
- Needing of a new accessibility for disable people;
- Lack of connections between the spaces;

The necessity to create flexible spaces

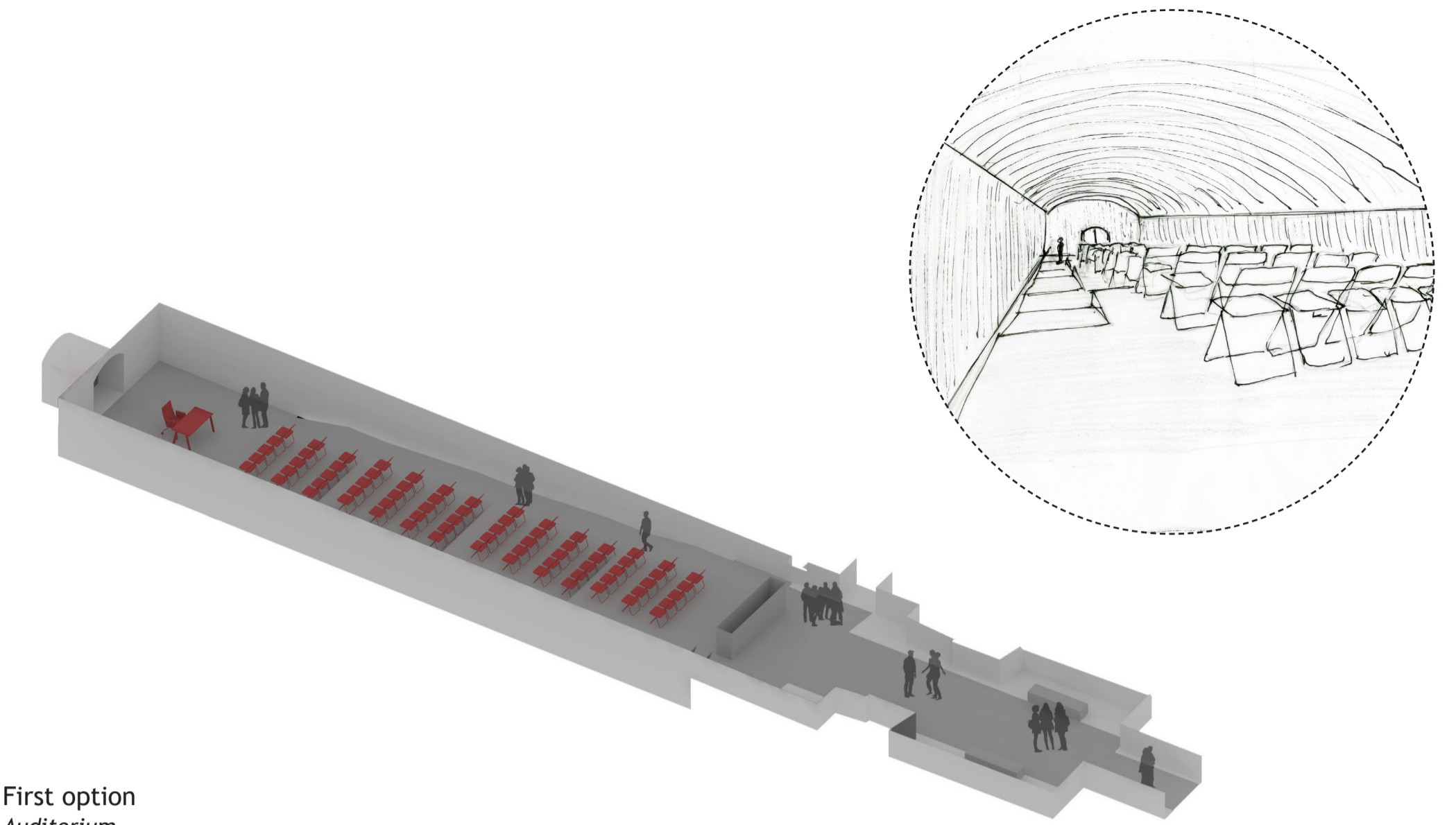
- Strong presence of exhibitions events in Mantua;
- Relevant Enogastronomic and agricultural tradition;
- Needing spaces for temporary events & conferences;
- Needing of workshop spaces for the events;



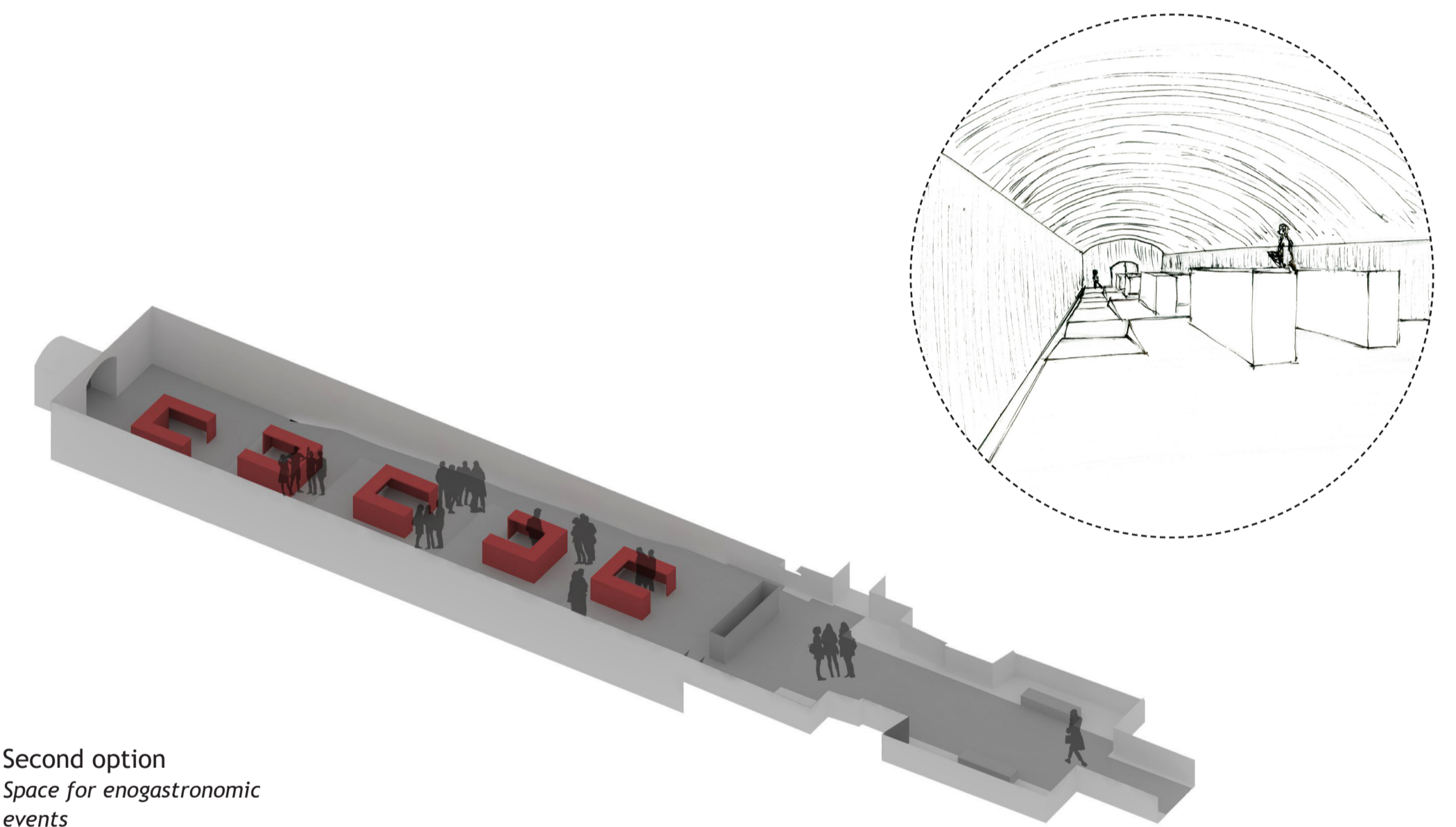
FLEXIBILITY OF THE TUNNEL



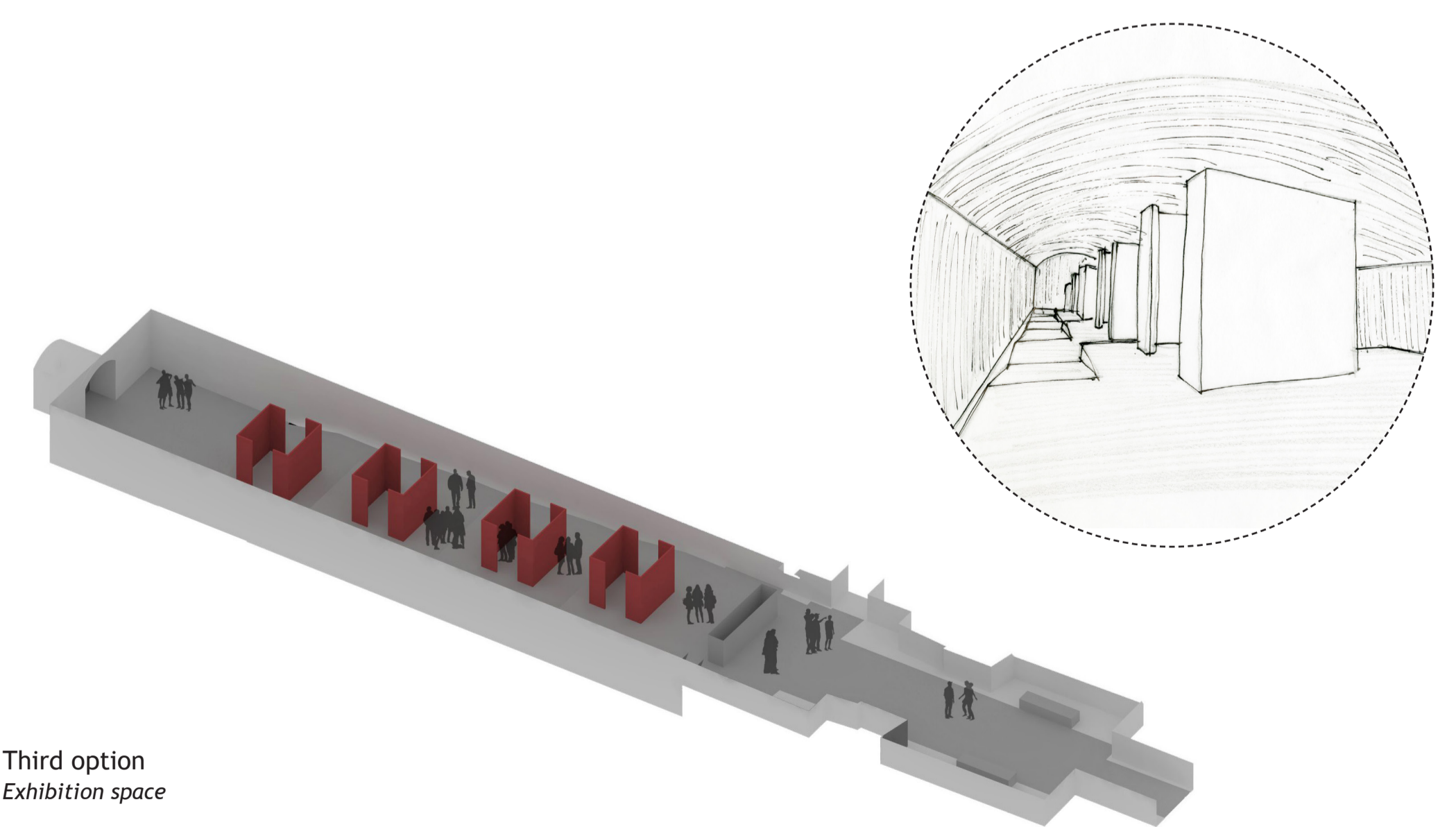
GROUND FLOOR PLAN scale 1:100



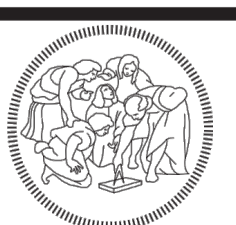
First option  
Auditorium

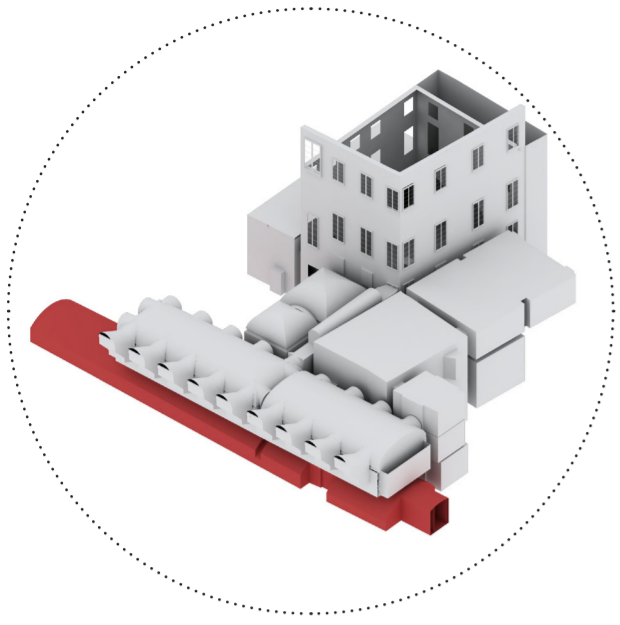


Second option  
Space for enogastronomic events



Third option  
Exhibition space

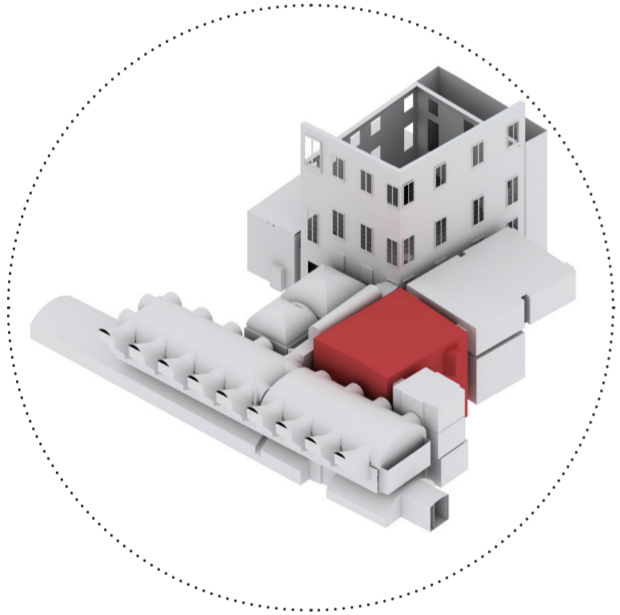




**TUNNEL**

Main flexible space.

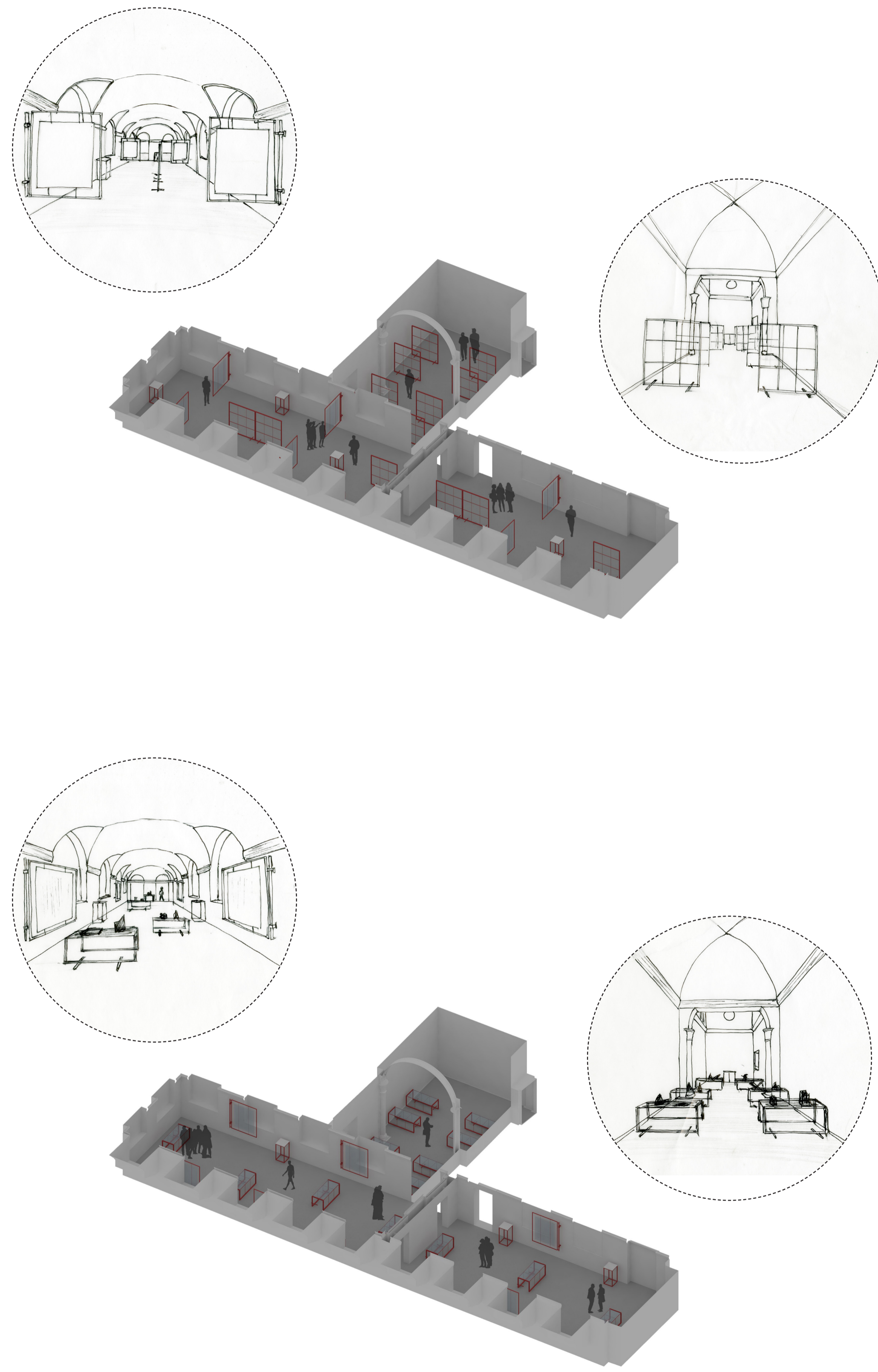
Exploiting the terrain of this gallery are created large terraces that allow you to enjoy these spaces in different ways; Space can be used as auditorium, as an exhibition space or even for food and wine events



**TRANSITION ROOM**

Main connection space.

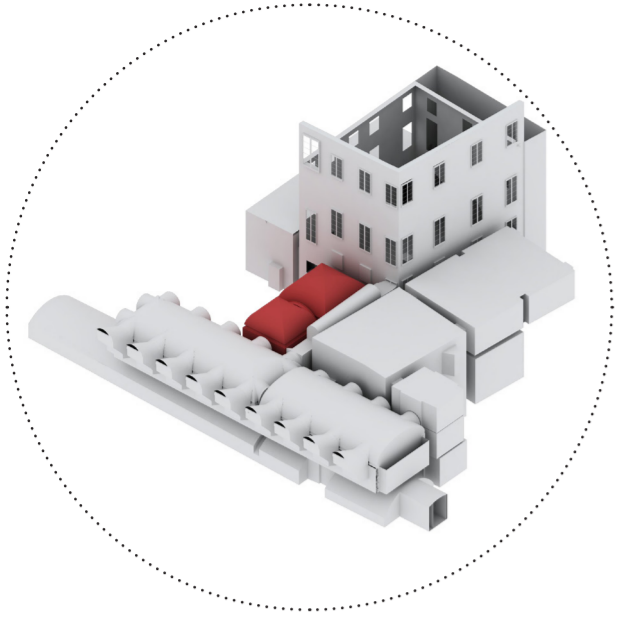
This space is the heart of the project, a unique space that connects all the different rooms. An independent iron structure has been created to supports the different balconies that show the circulation of people inside the system



FIRST FLOOR PLAN scale 1:100

ASSONOMETRIC VIEWS OF SUPPORTS

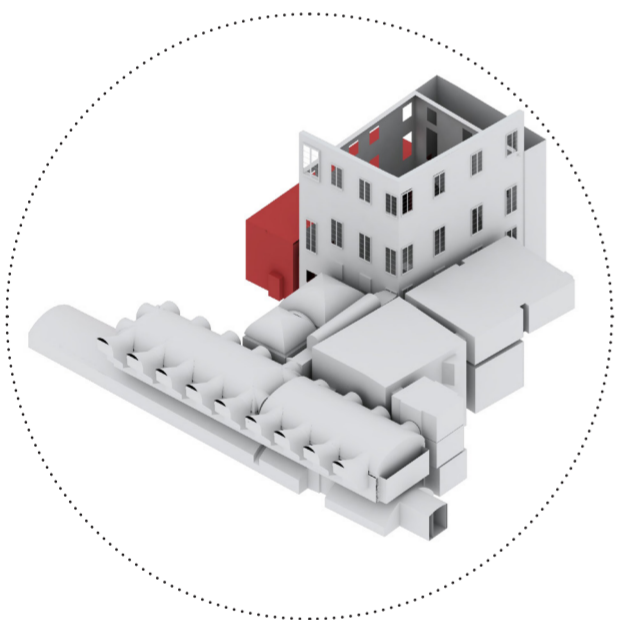




**CHAPEL**

Exhibition space

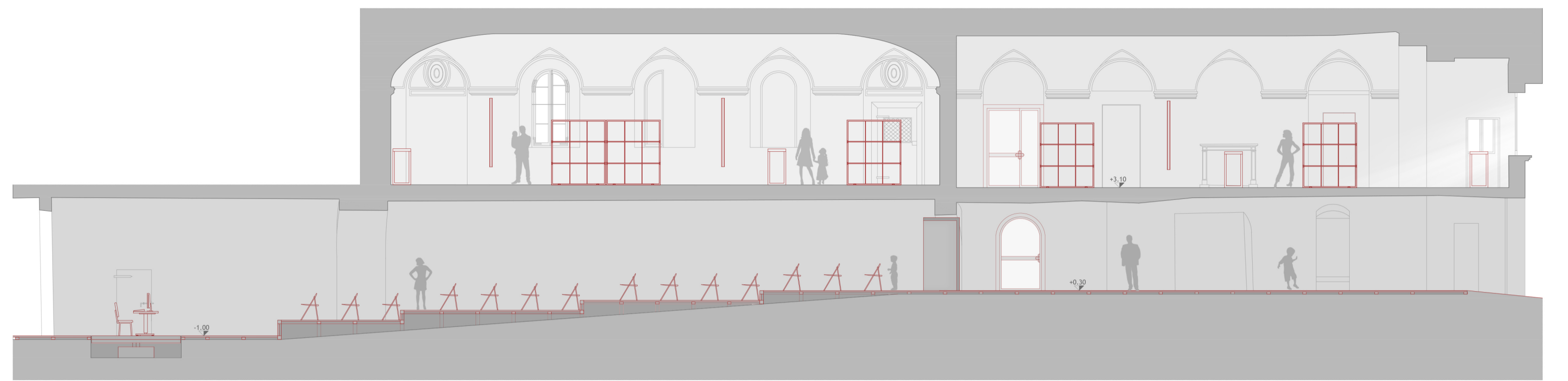
The space of the old chapel of Santa Croce has been restored to create an exhibition space in an environment rich of historical values



**WORKSHOP ROOM**

Space for the various workshops that will be held during the festival of literature and also for the university of architecture. This room is equipped with furnishings that allow to host different events such as small conferences but also group work.

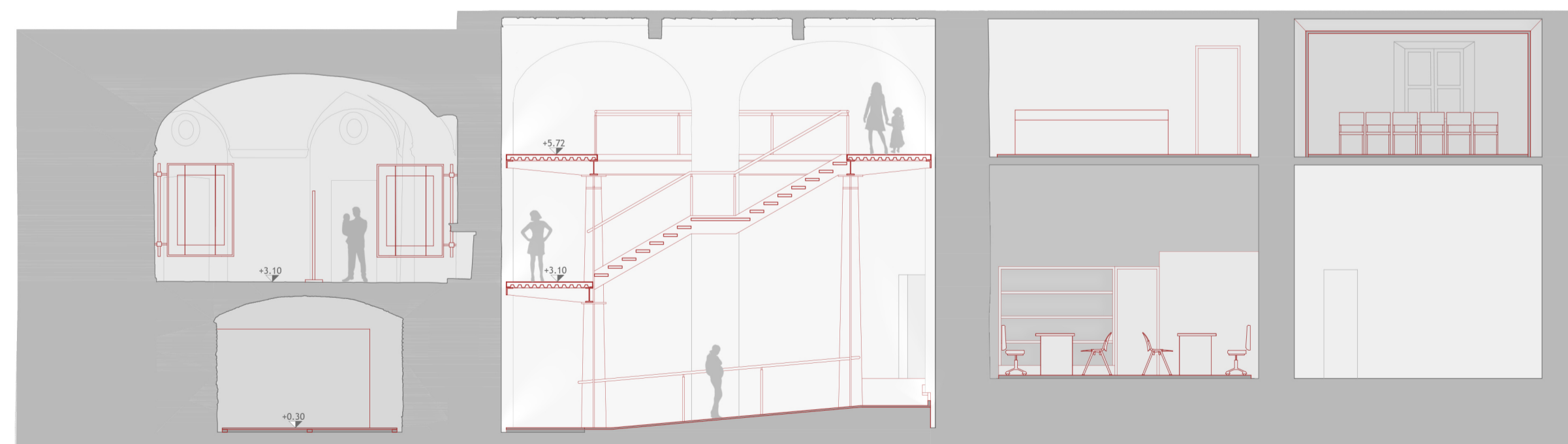




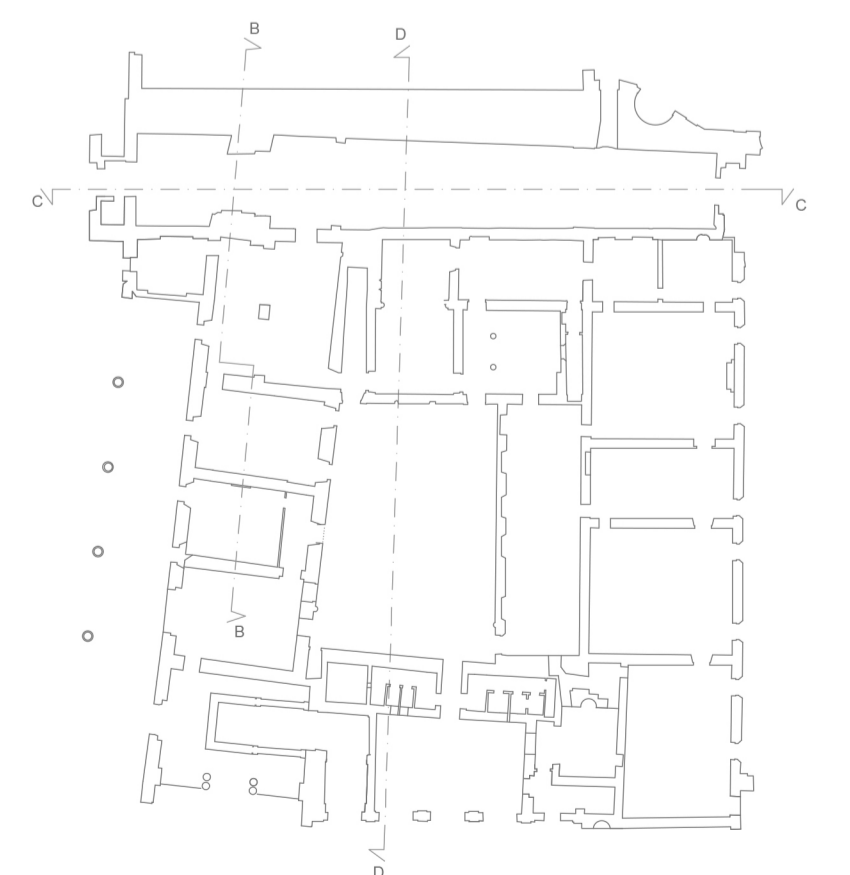
SECTION C-C scale 1:100



SECTION D-D scale 1:100

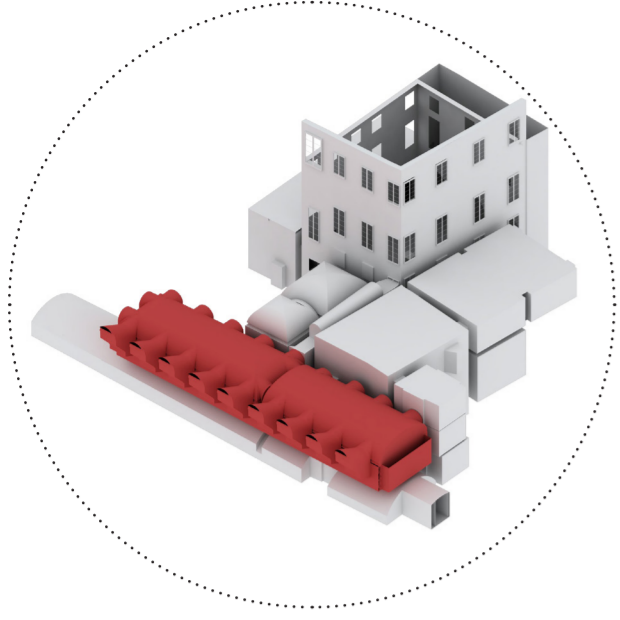


SECTION B-B scale 1:100



SECOND FLOOR PLAN scale 1:100

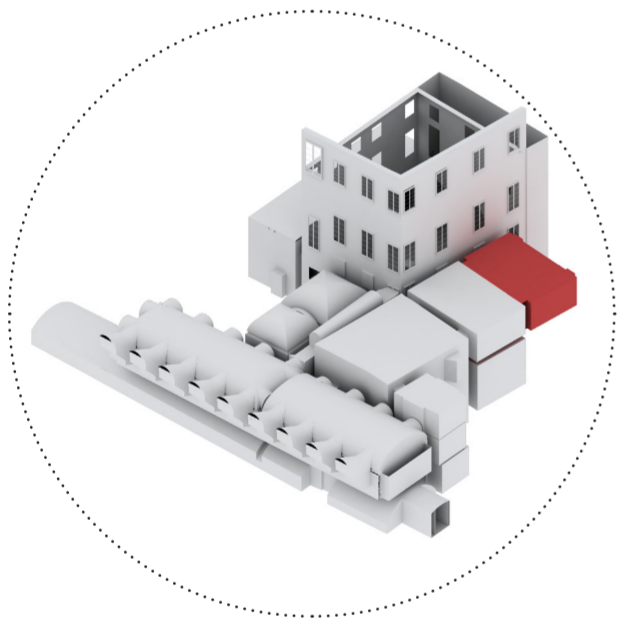




**REFECTORY**

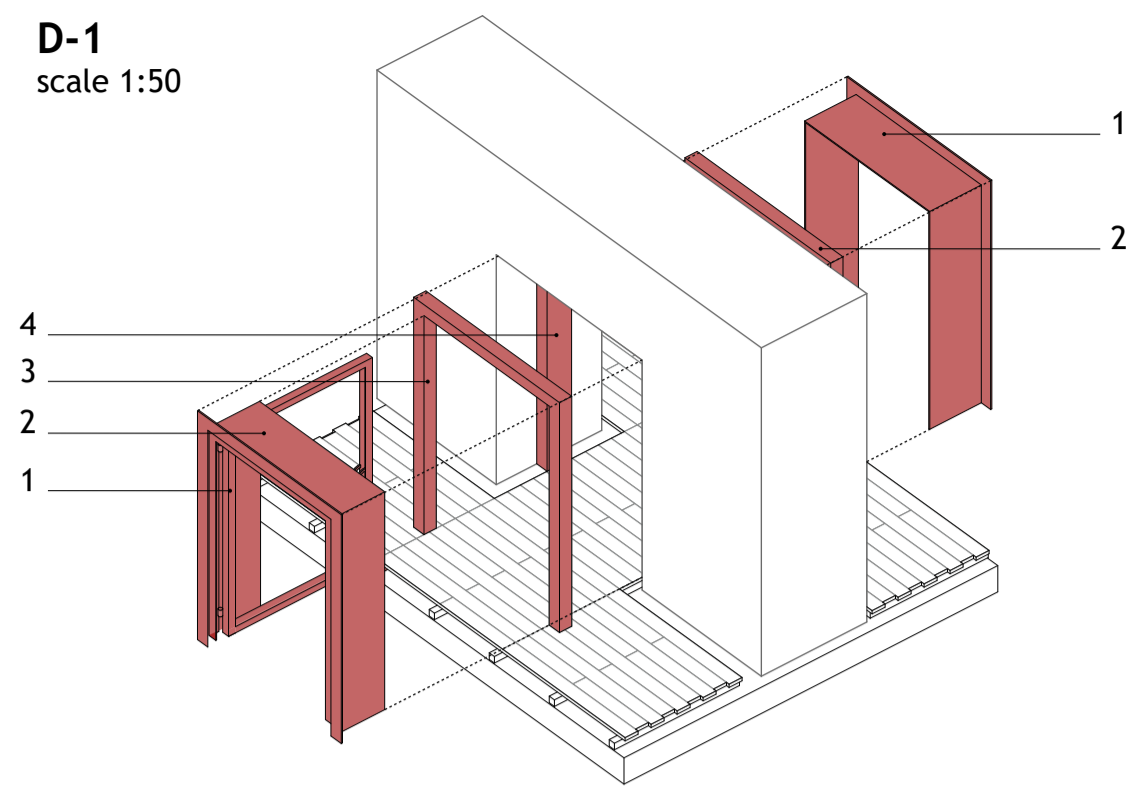
Main exhibition room.

Space is mainly characterized by two display systems; In the walls there are rotatable panels while in the center of the room there are flexible panels that can be transformed into supports. Thanks to the use of these flexible panels it is possible to accommodate different types of exhibitions.



**MEDIA ROOM**

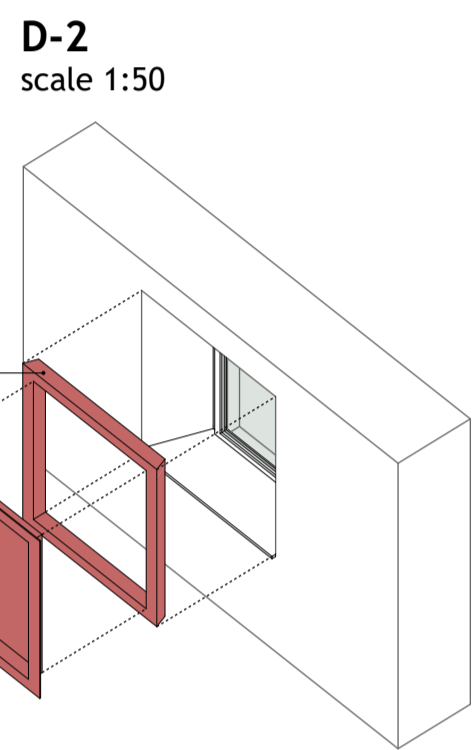
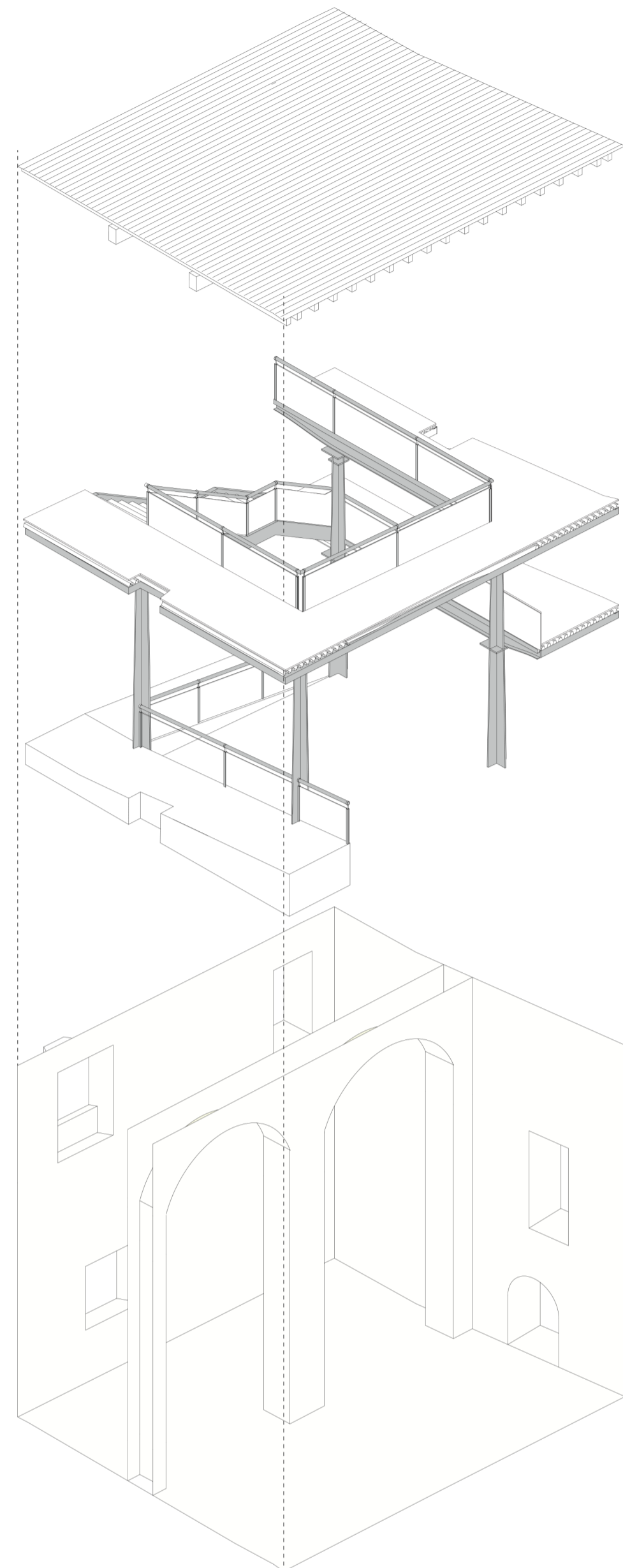
Space intended for multimedia display of things in relation to events that will be present in a specific period.



**D-1**  
scale 1:50

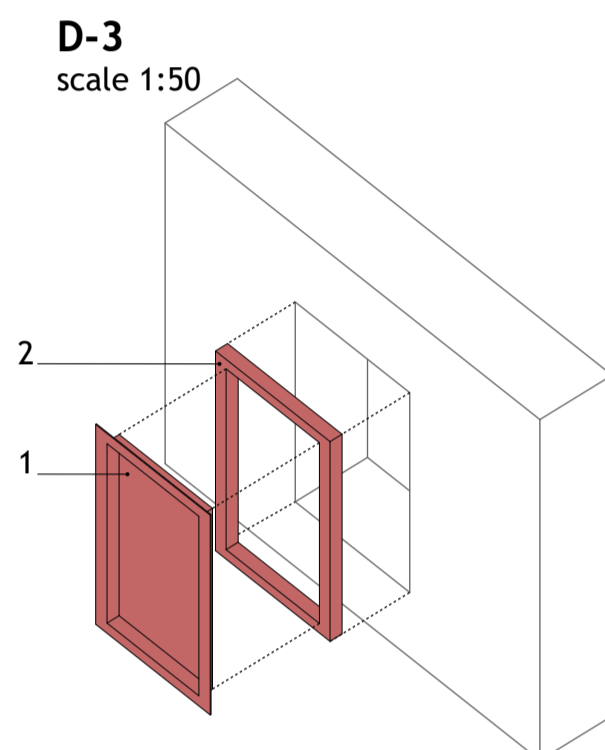
1. Steel and glass door leaf
2. Steel frame, thick. 7mm
3. Wooden counterframe, dim. (100x100)mm
4. Wooden counterframe, dim. (100x200)mm

ASSONOMETRIC VIEW OF THE ROOM

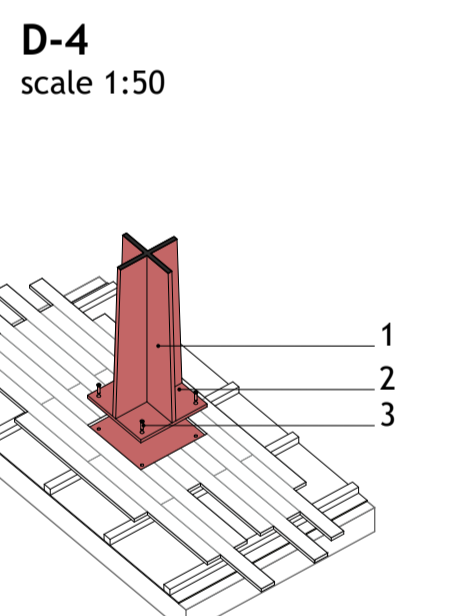


**D-2**  
scale 1:50

1. Steel cover, thick. 5mm
2. Wooden frame, dim. (100x100)mm

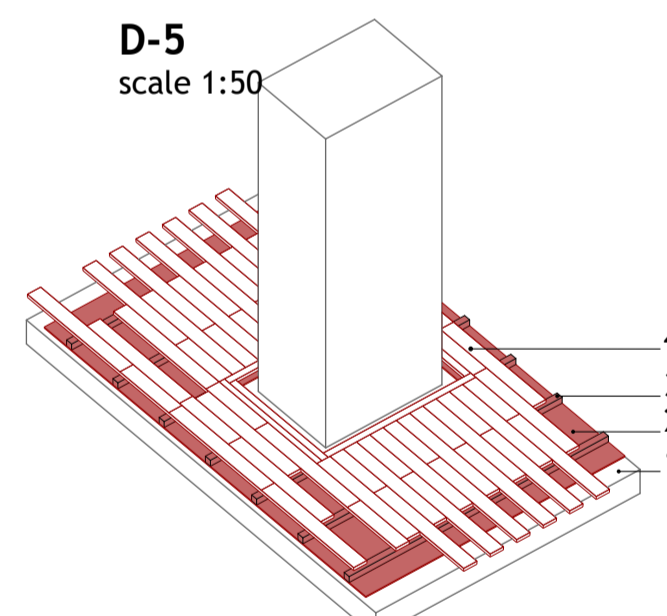


**D-3**  
scale 1:50



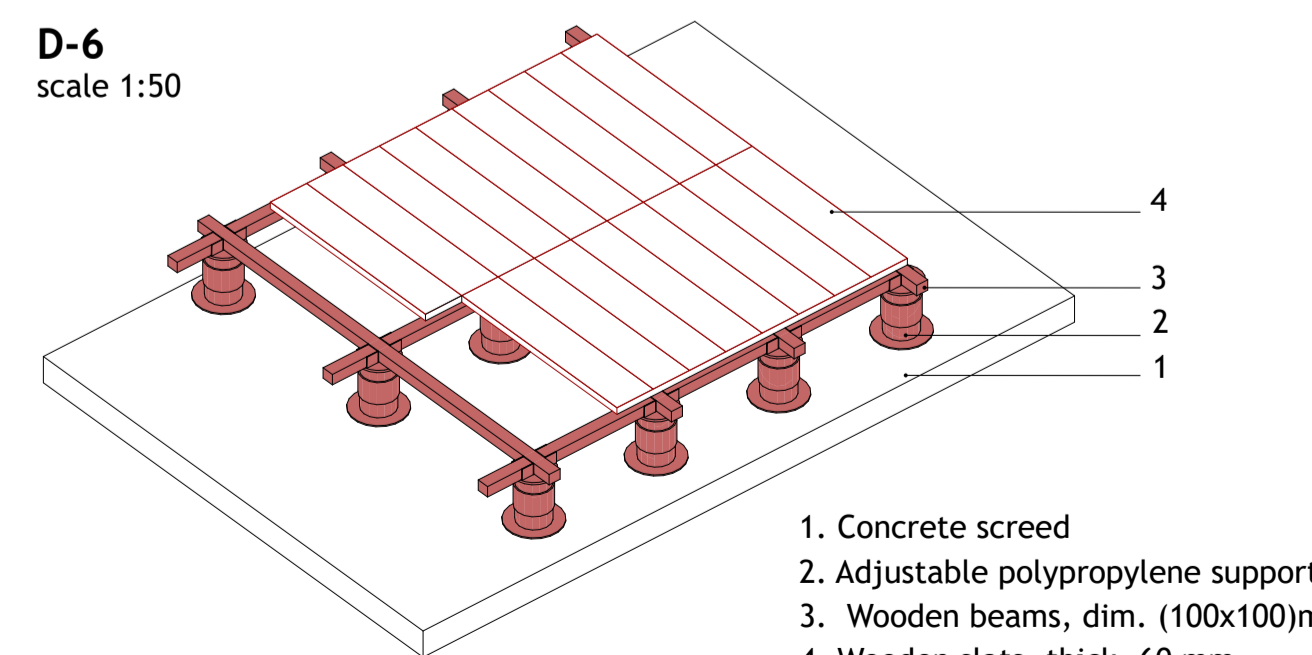
**D-4**  
scale 1:50

1. Steel cruciform pillar, thick. 30mm
2. Steel plate, dim. (500x500)mm
3. Hexagon head screw



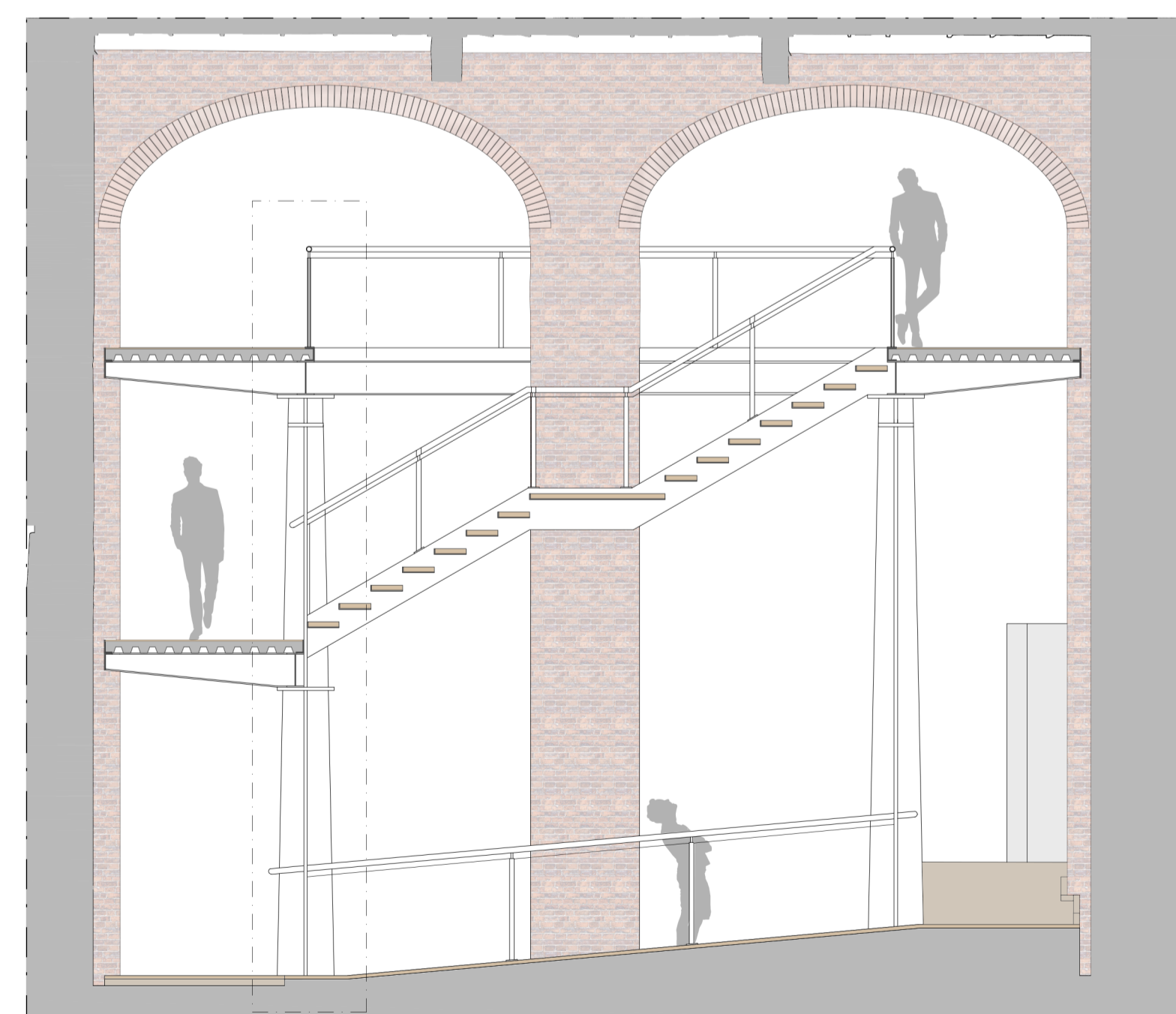
**D-5**  
scale 1:50

1. Existing floor
2. Soundproofing mattress, thick. 6mm
3. Wooden beams, dim. (60x60)mm
4. Parquet floor, thick. 30mm



**D-6**  
scale 1:50

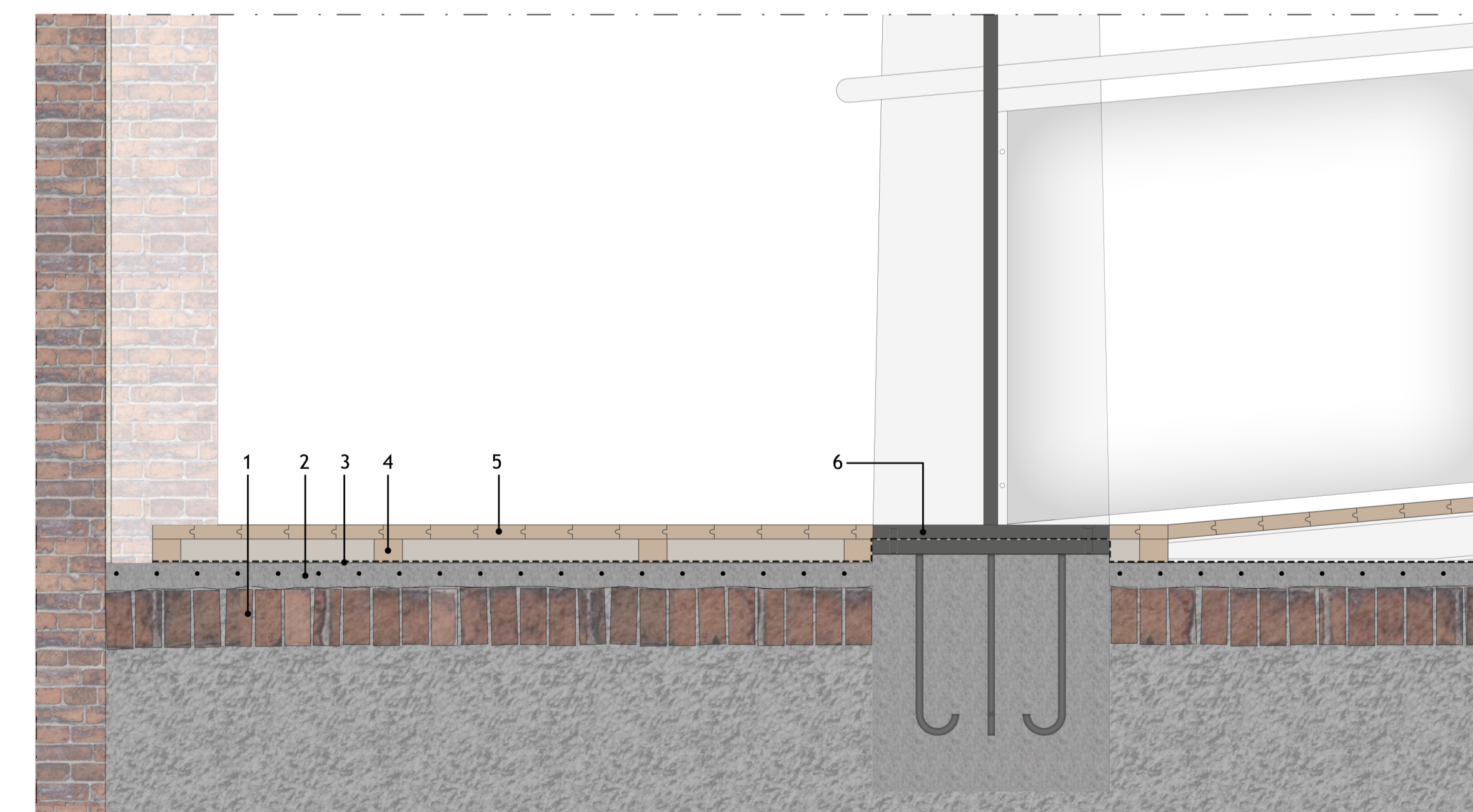
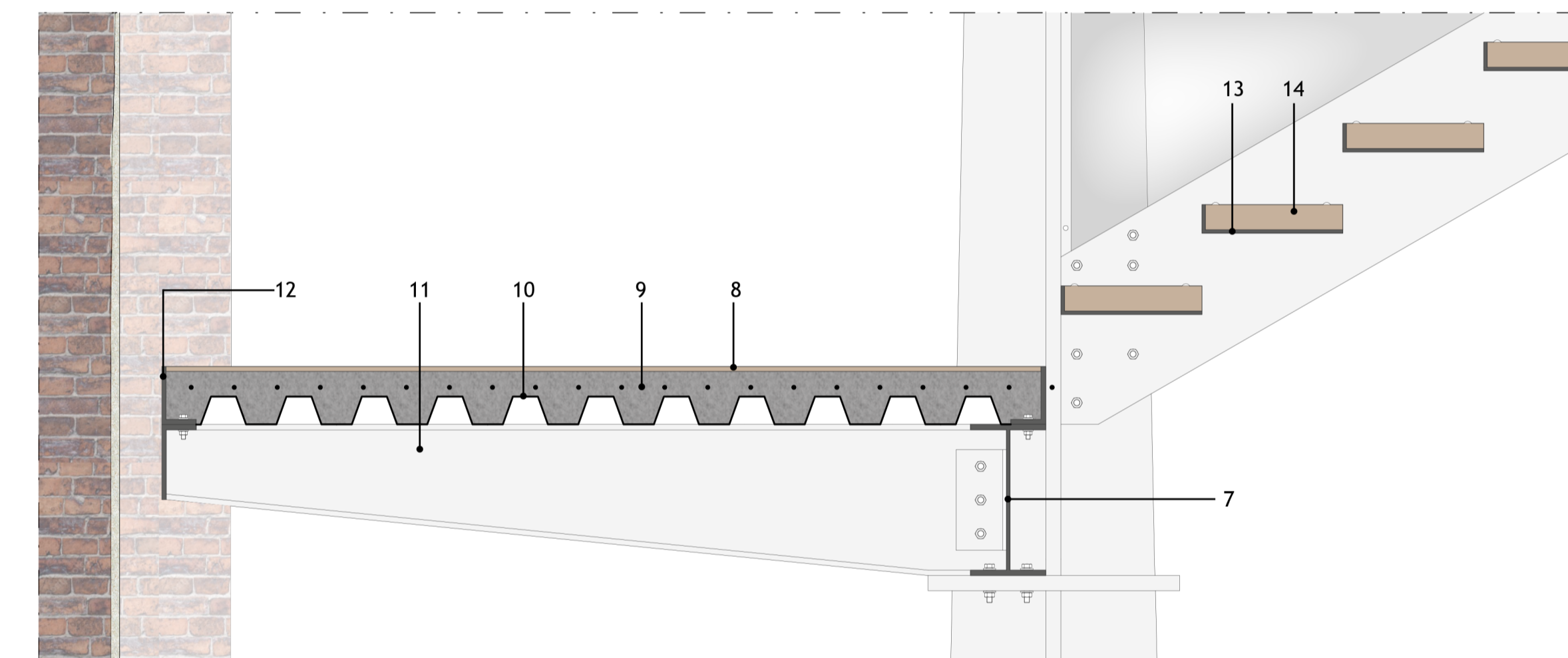
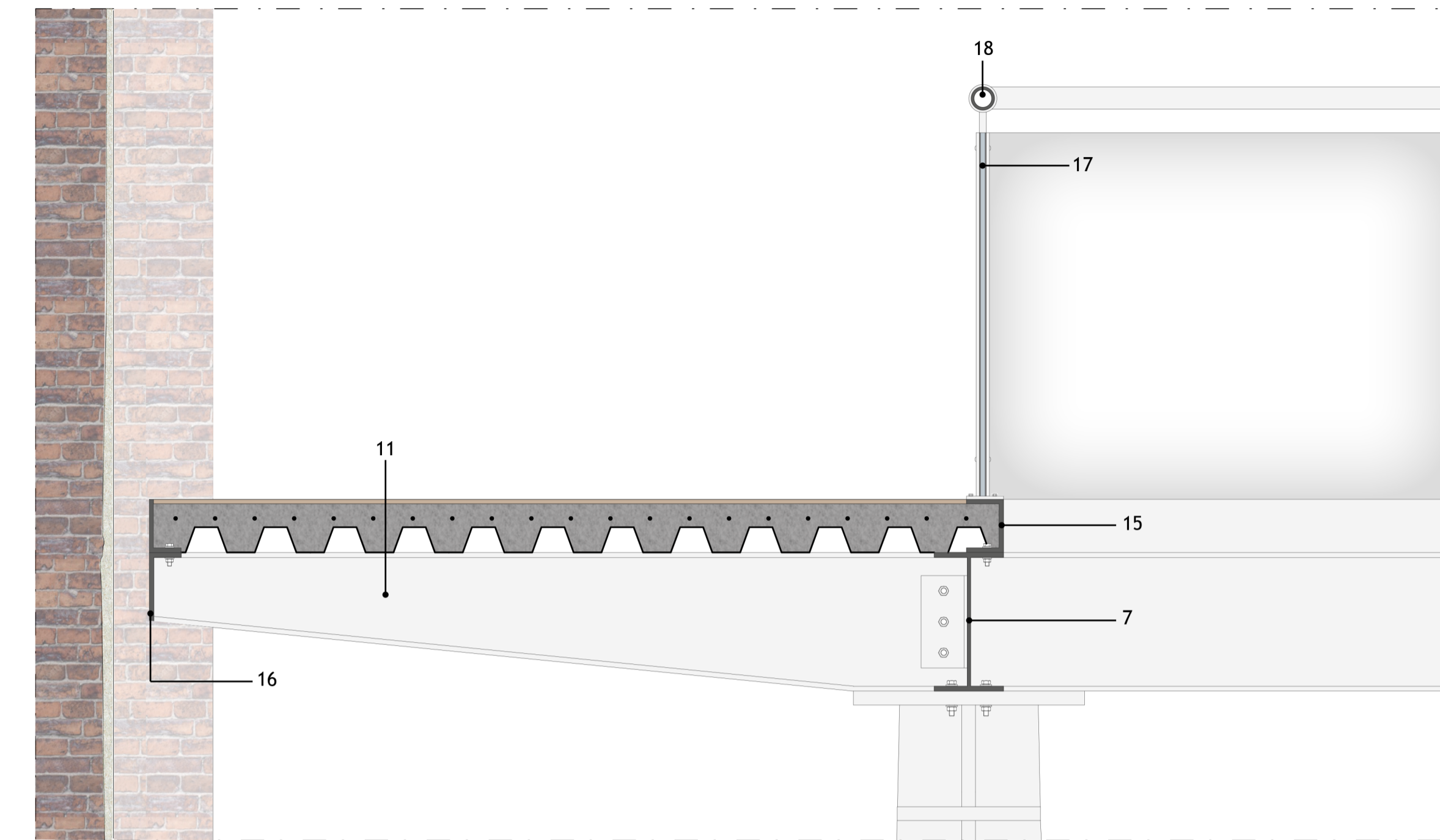
1. Concrete screed
2. Adjustable polypropylene support
3. Wooden beams, dim. (100x100)mm
4. Wooden slats, thick. 60 mm



**SECTION** scale 1:50

CAPTION

1. Existing floor
2. Concrete screed, thick. 80mm
3. Soundproofing mattress, thick. 6mm
4. Wooden beam, dim. (60x60)mm
5. Parquet floor, thick. 30mm
6. Steel plate fixed with 4 hexagon-head screws
7. Steel beam IPE 300
8. Parquet floor, thick. 15mm
9. Concrete screed, thick. 100mm
10. Corrugated sheet, thick. 6mm
11. Steel tapered beam. IPE (300-150)
12. L-shaped steel profile, dim. (70x120)mm
13. Support L profile, thick. 7mm
14. Wooden Slats, thick. 50mm
15. C-shaped steel profile, dim. (80x120)mm
16. L-shaped steel profile, dim. (70x150)mm
17. Glass parapets, thick. 10mm
18. Tubular steel handrail, diam. 50mm



**DETAILS** scale 1:10

