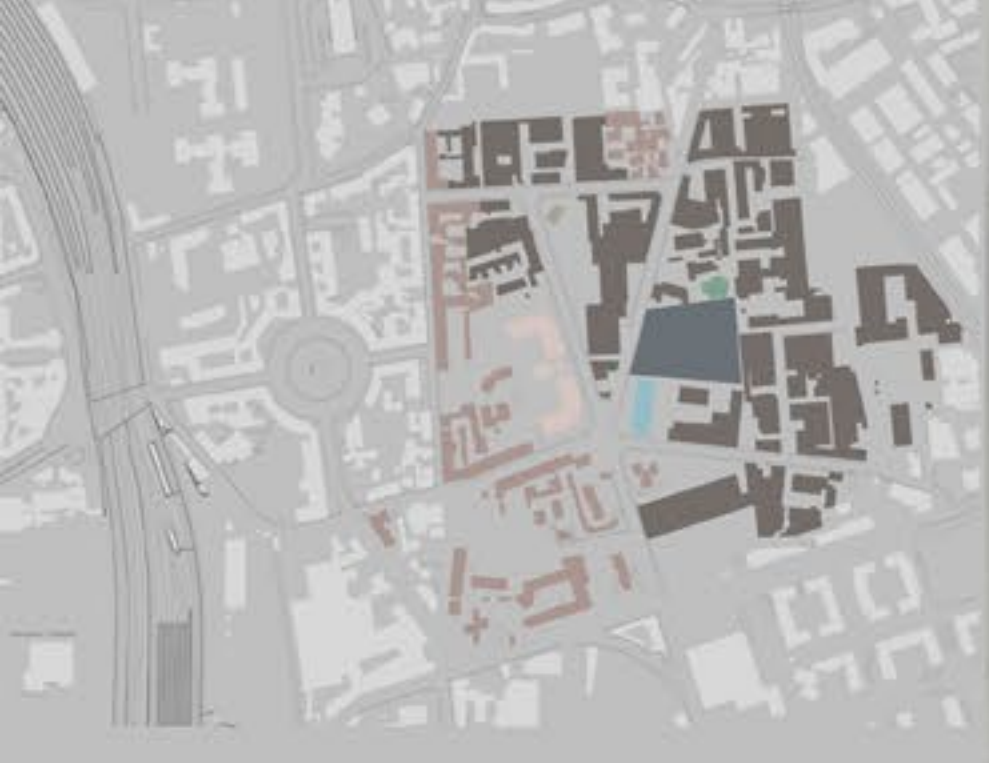


The site of the project is located in the *Lambrate Design district*, precisely near the street *Giovanni Ventura*, crucial for the annual *Design Week* in Milan. The area contains a closed and old fabric and for this reason it has been used to realize the architecture project.



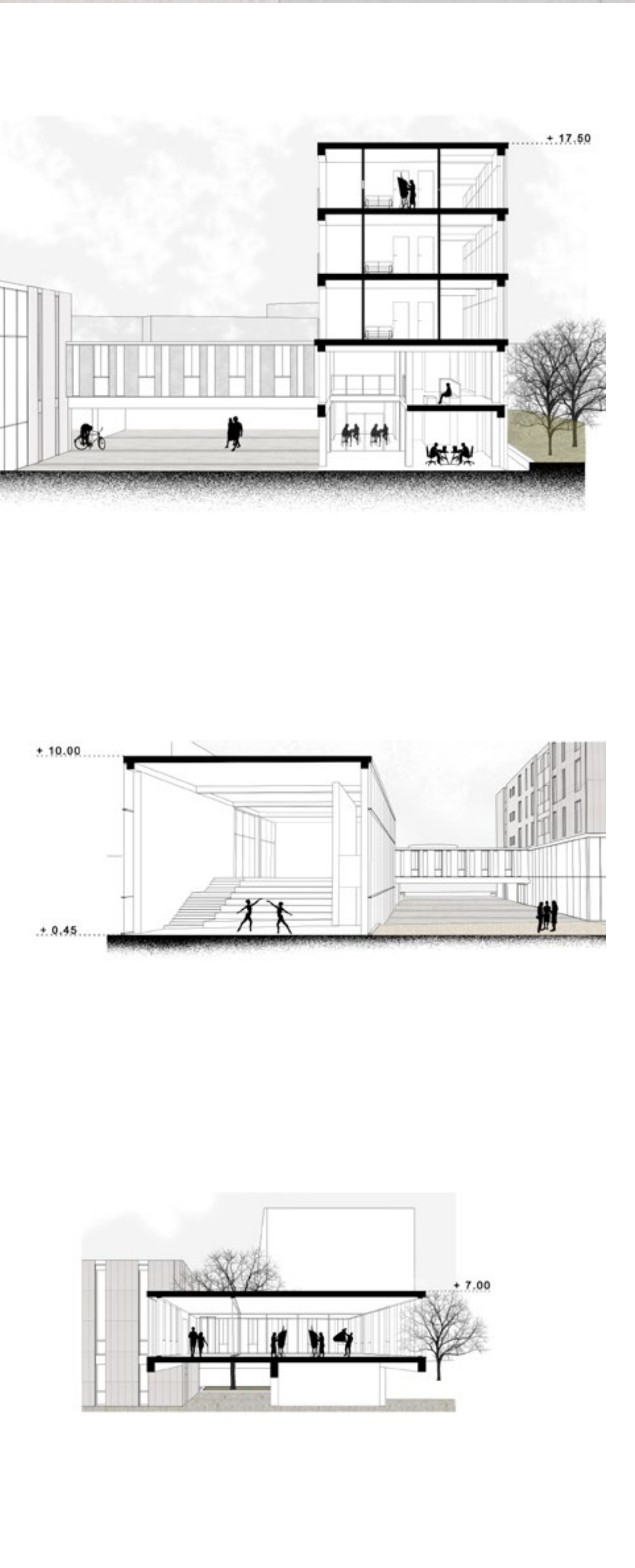
Studying the neighborhood, it is noticeable the presence of residences buildings (red ones), fabrics (brown ones), a church (green) and old people social center.



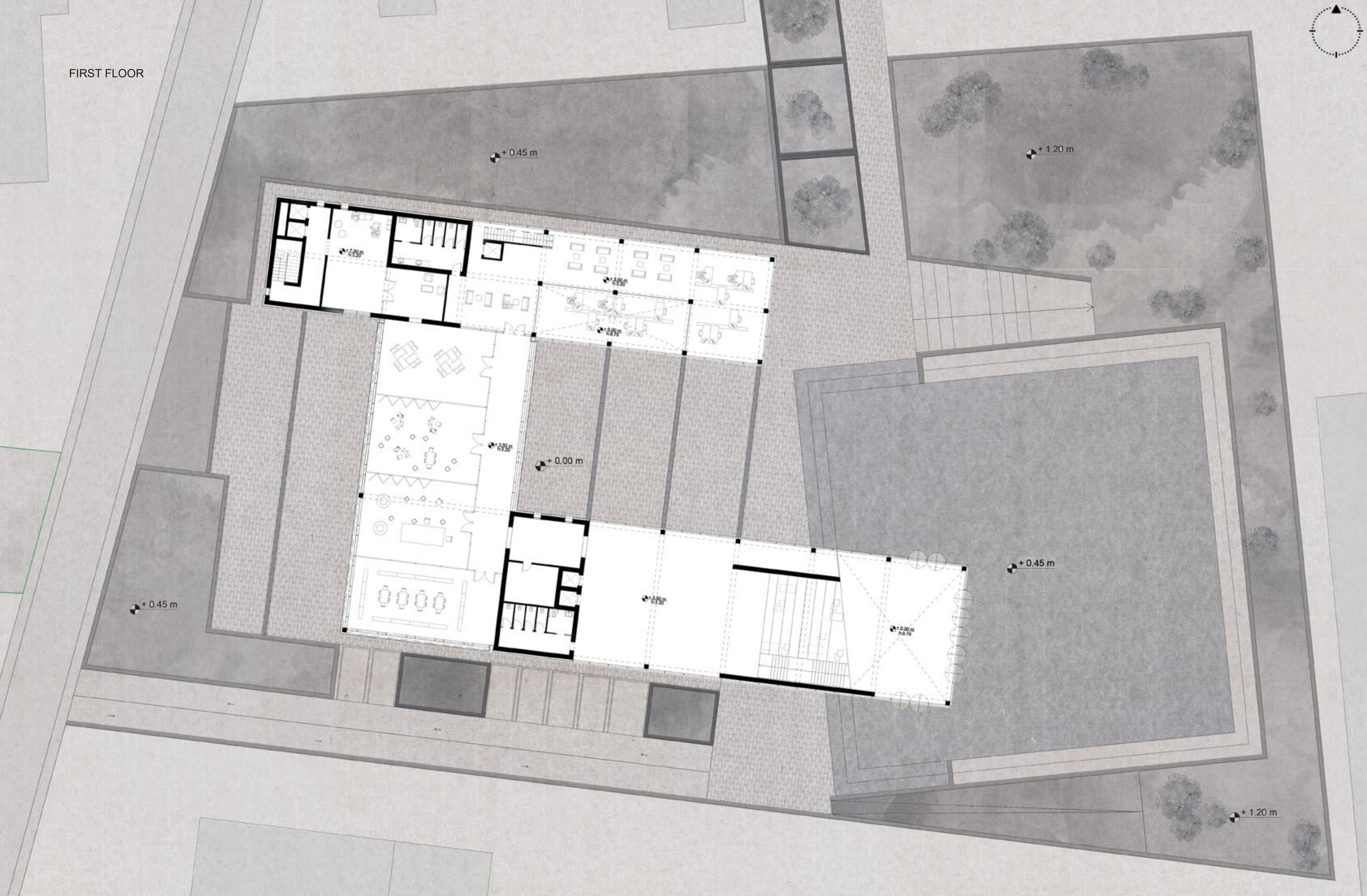
As stated before, this area is relevant for the design week and here it has been analyzed the buildings mainly used for the event and which are the roads interested during that days.



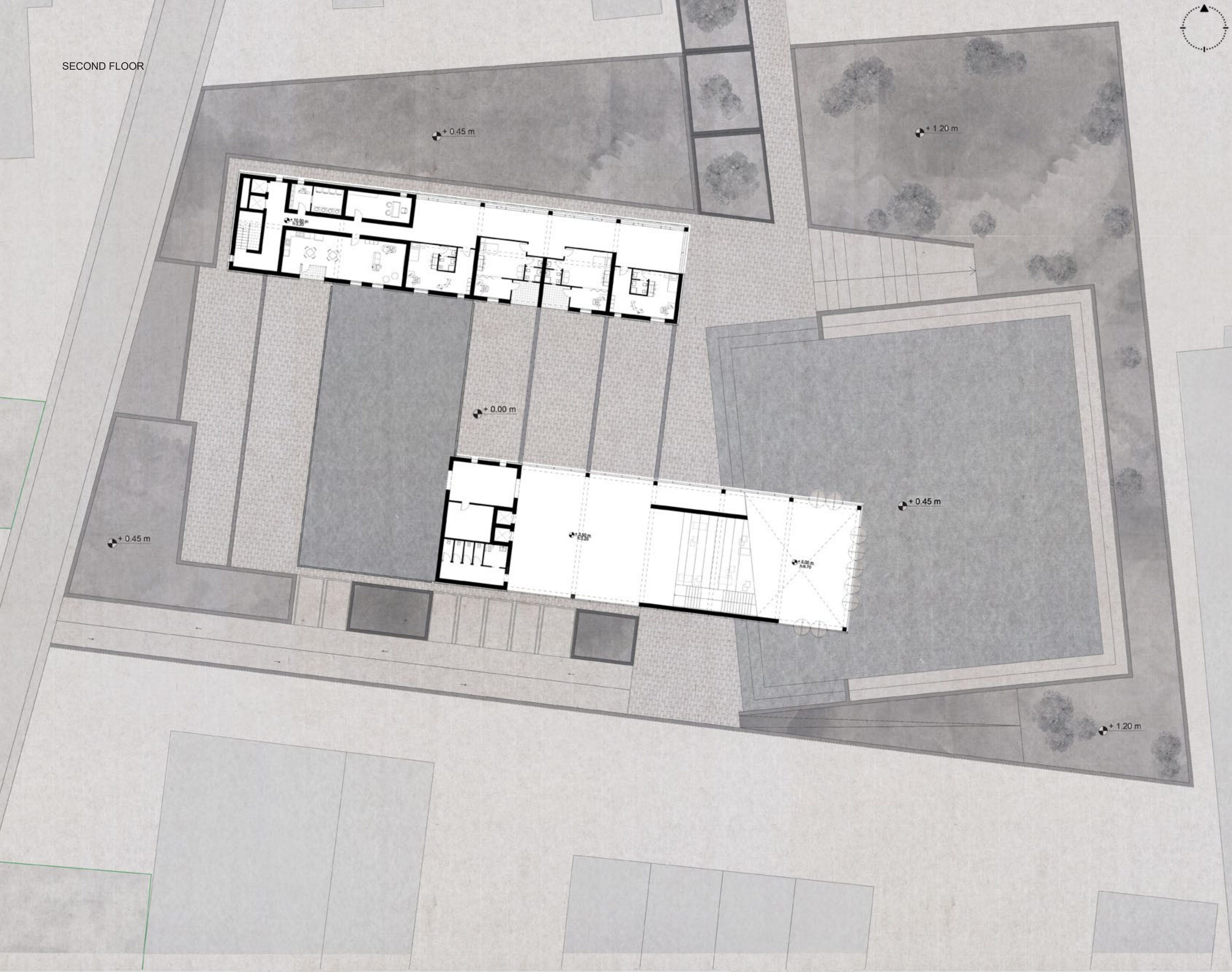
GROUND FLOOR



FIRST FLOOR



SECOND FLOOR



THIRD FLOOR



FOURTH FLOOR



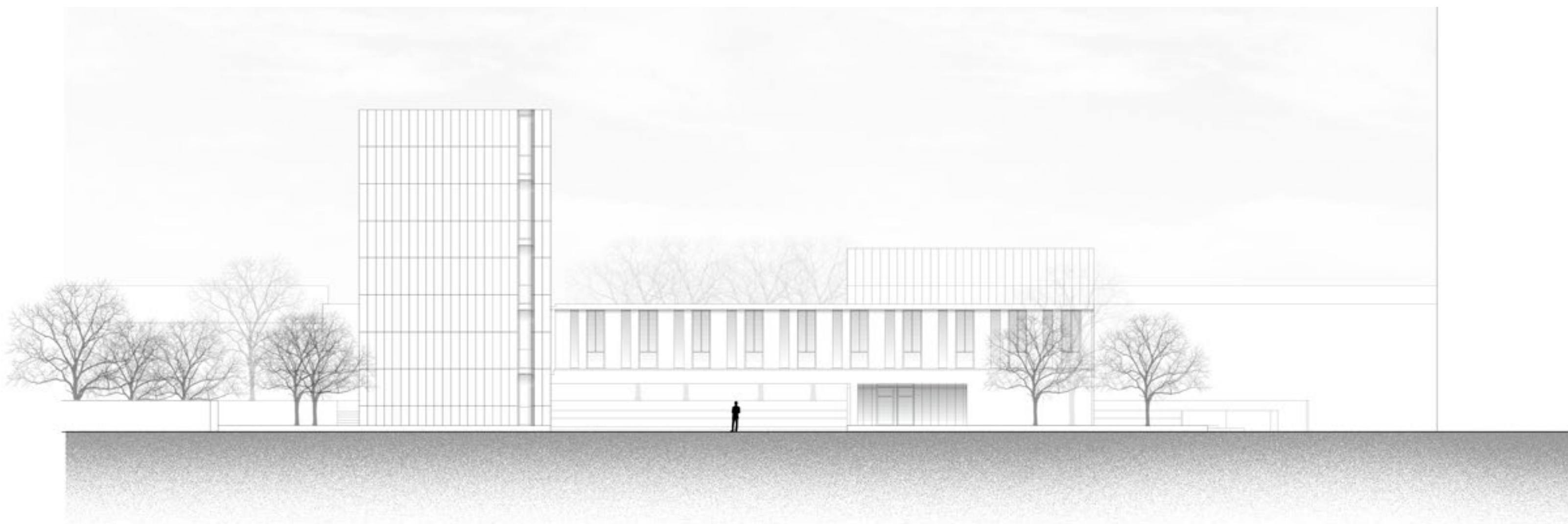
SOUTH ELEVATION

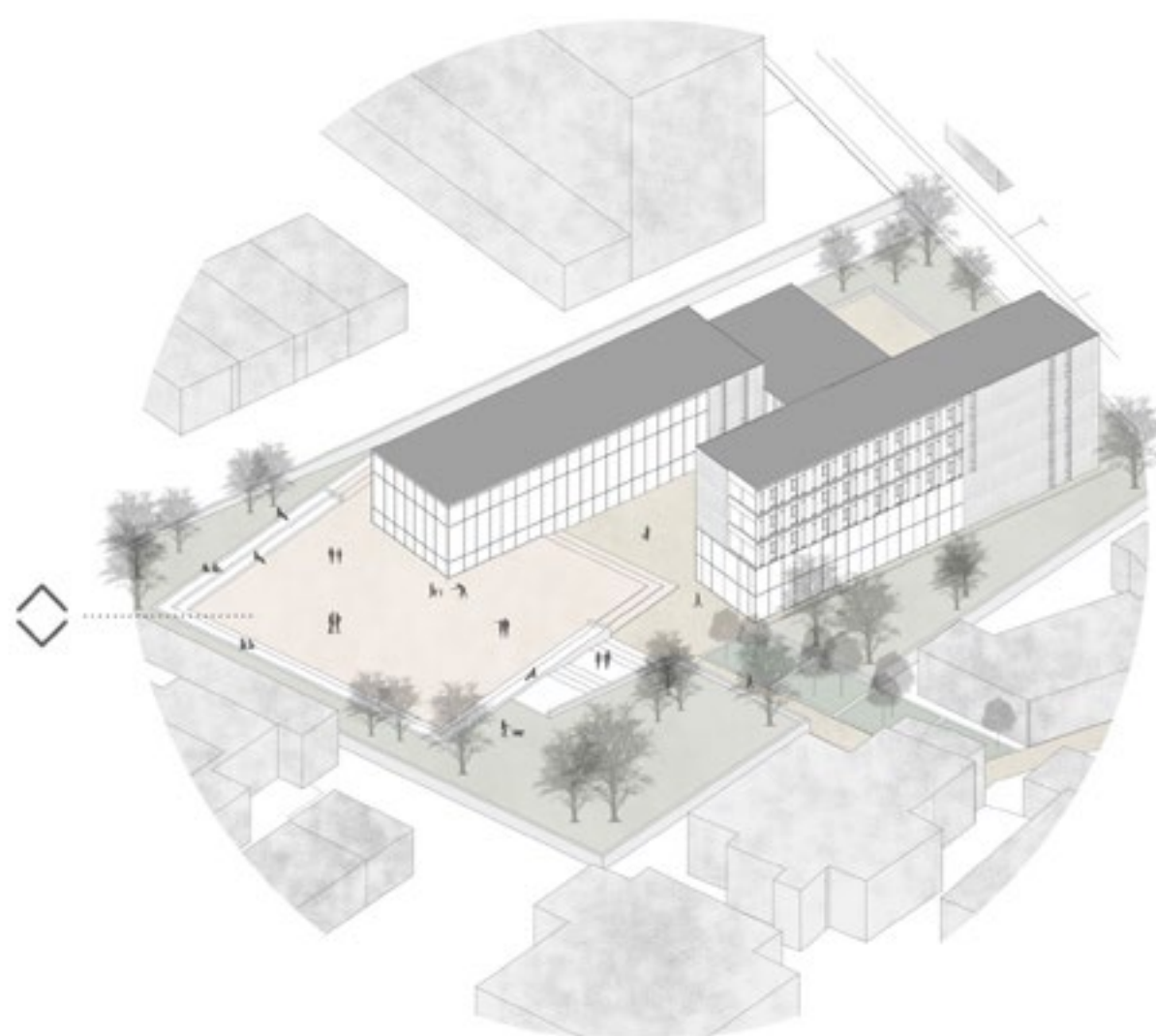
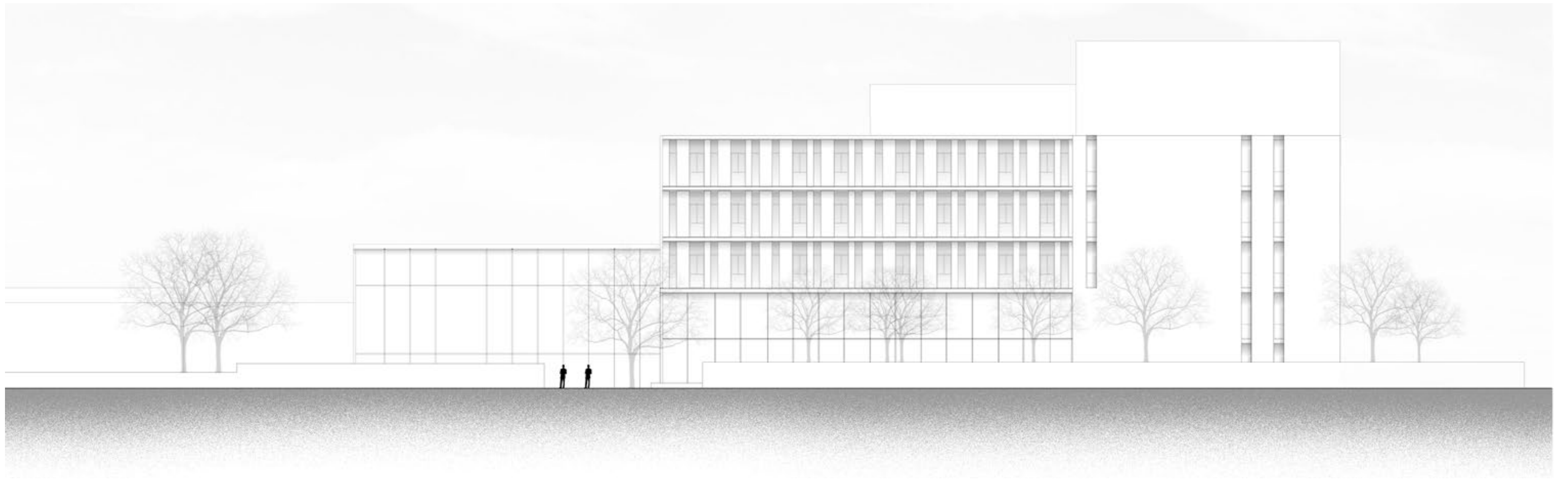


EAST ELEVATION

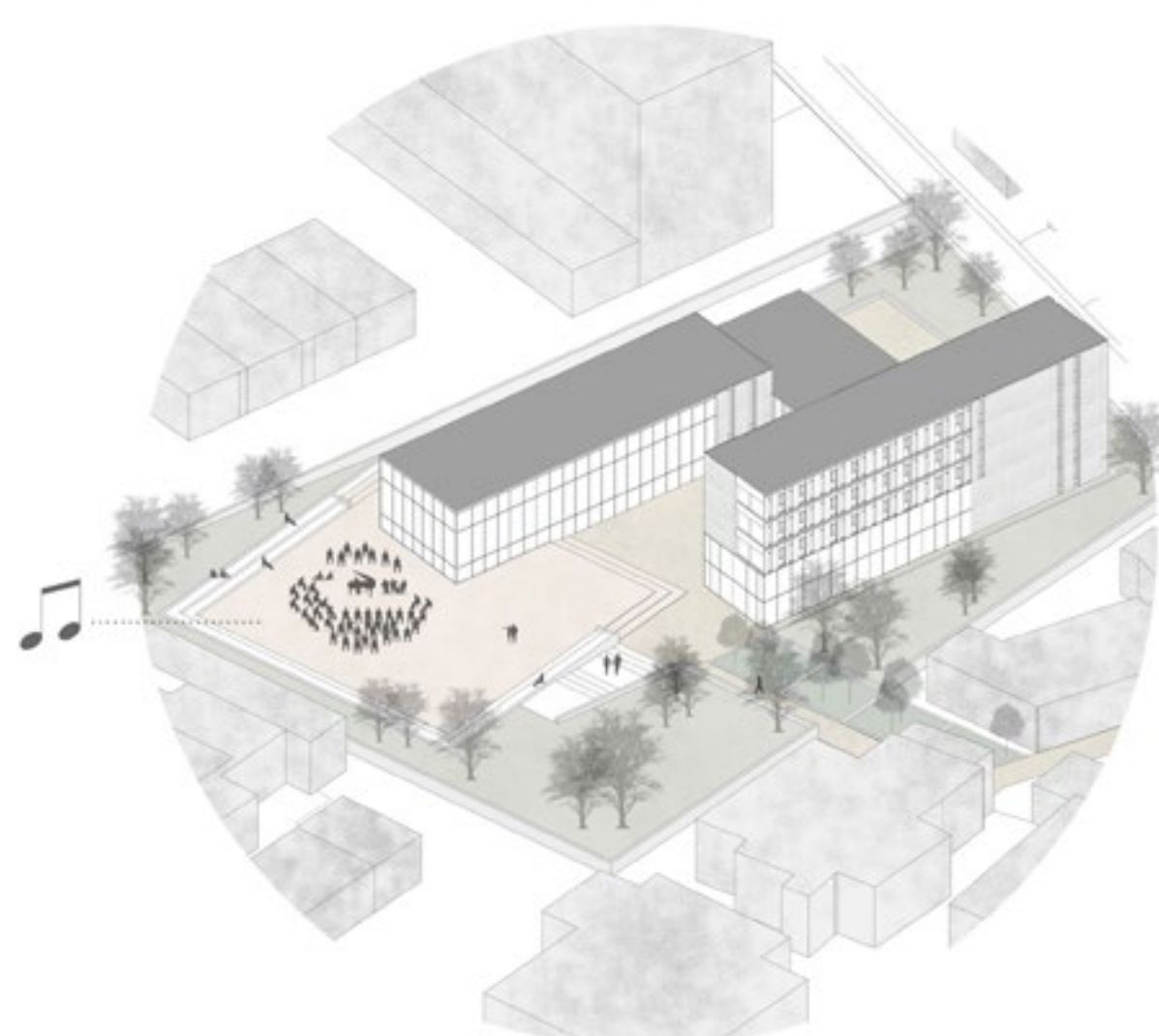


WEST ELEVATION





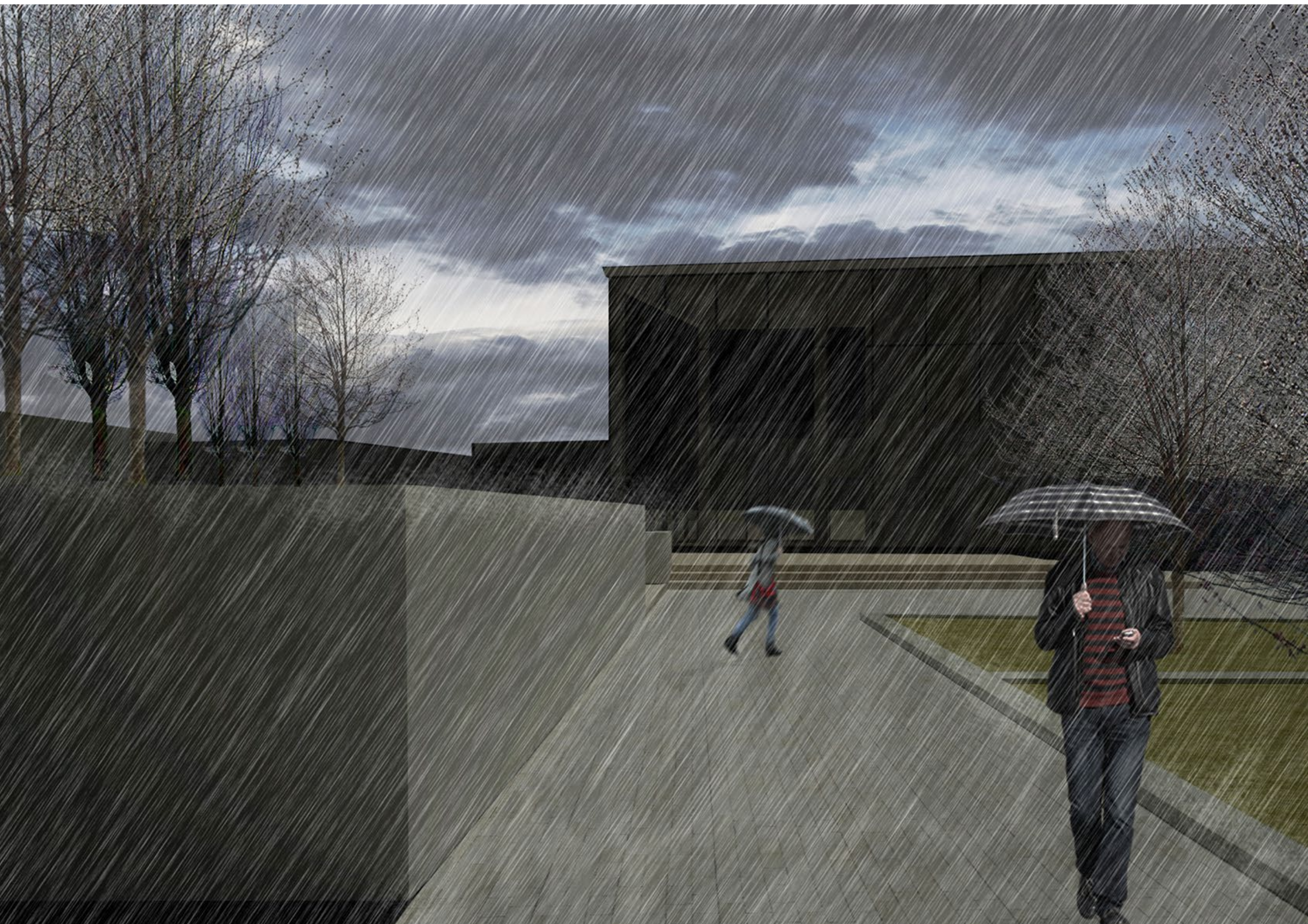
The main plaza used as a proper public space where is possible to meet new people and have an experience about the entire site. In fact, from this space it is feasible to look at the main architecture buildings: the performance one on the left, the one with the laboratories in the centre and the coworking and residences one on the right.

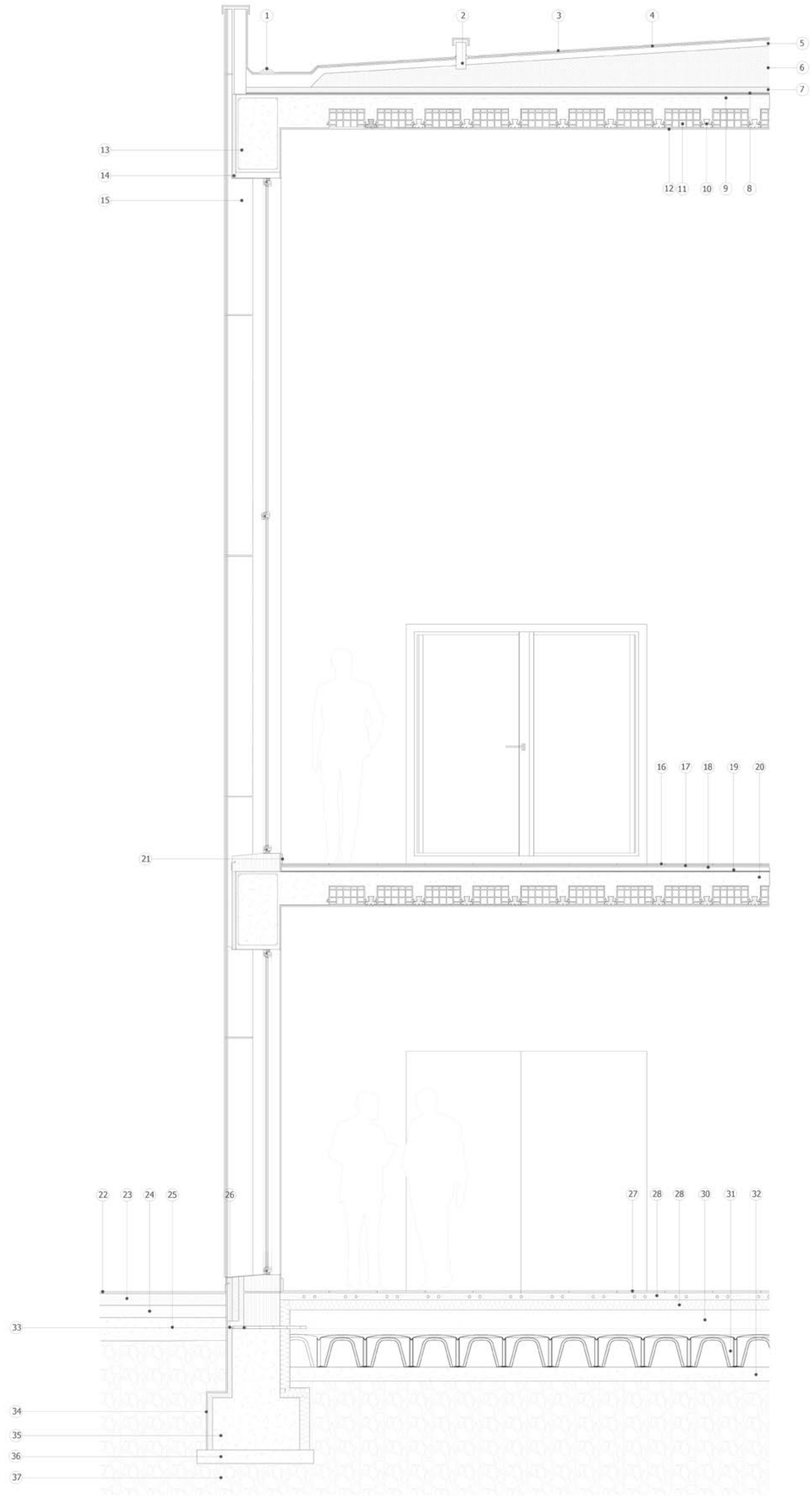
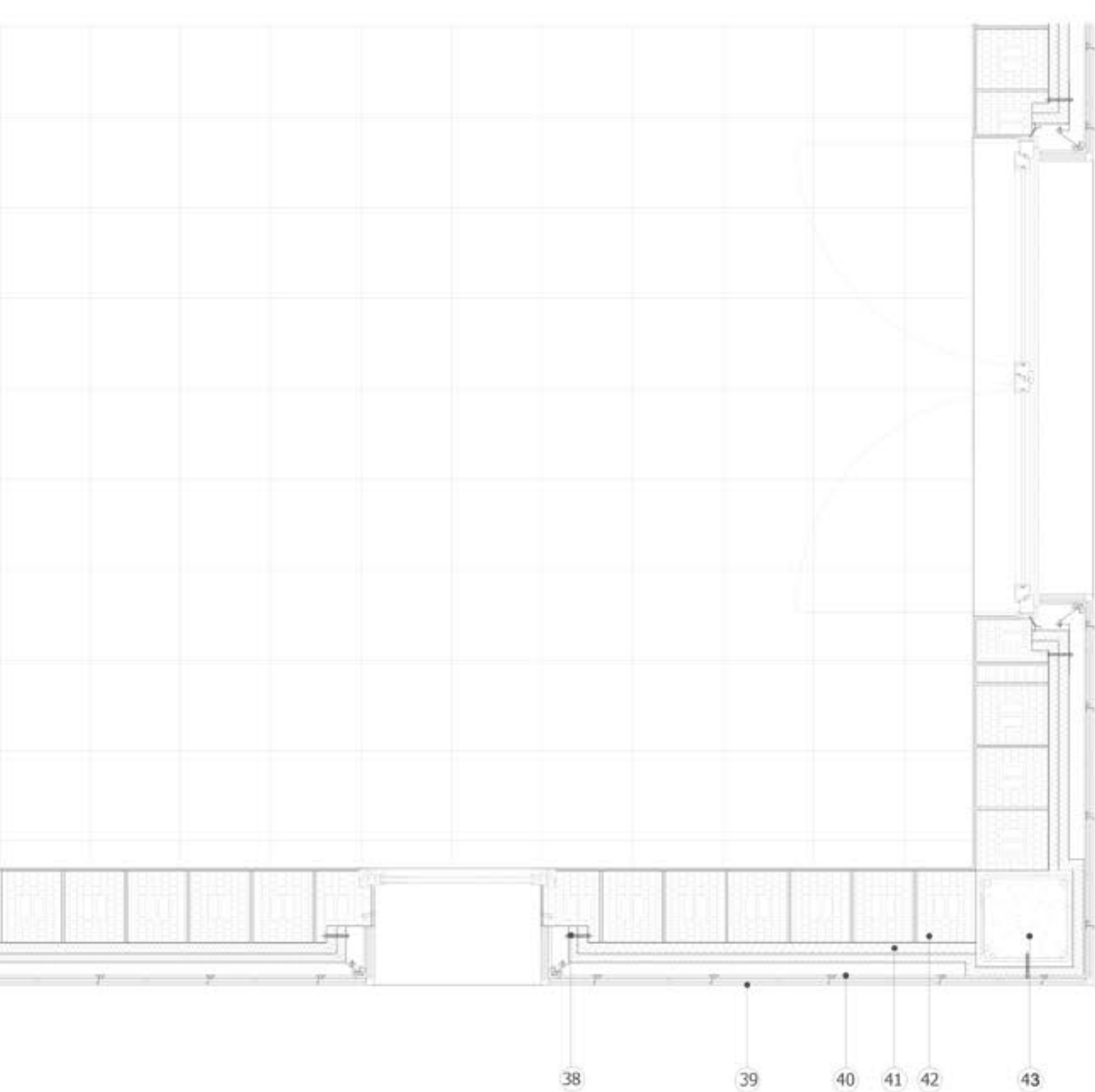
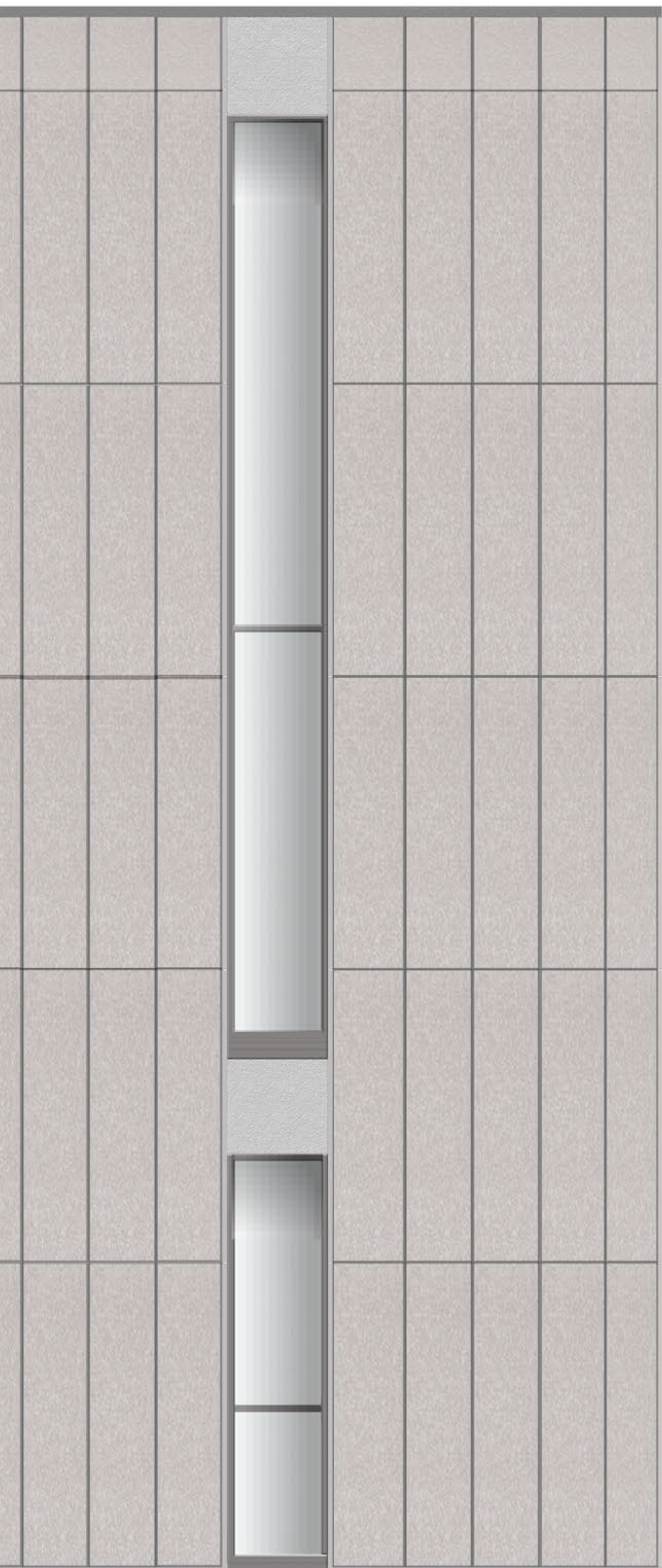


Thanks to the direct connection with the performance building there the possibility to live the space in an *artistic way*; the plaza, in fact, can house outside expositions which are straight linked to the one inside. For this reason an open glass structure has been thought during the design phase, in order to create a continuity.



As stated above, thanks to the connection between the public space and the performance space, the plaza has also the role to host performances both only outside or inside/outside. Due to these last functions, this area has been thought with a staircase made by two big stairs, where people can sit and enjoy the space and the performances, also without the use of chairs.





- Legenda:**
- | | |
|-----------------------------|-------------------------------------|
| 1. Downpipe with filler | 21. Skirting |
| 2. Aerator | 22. External pavement |
| 3. Copper plates | 23. Sand |
| 4. Waterproof sheath | 24. Stabilized |
| 5. Concrete screed | 25. Filling substratum |
| 6. Insulating layer | 26. Termal insulation |
| 7. Termal insulation | 27. Gres pavement tiles |
| 8. Vapor barrier | 28. Screed |
| 9. Electrically welded mesh | 29. XPS insulation |
| 10. Joisted brick | 30. Lightened screed |
| 11. Hollow flooring block | 31. Iglu holow space |
| 12. Internal wood plaster | 32. Reinforced weak-mix concrete |
| 13. Concrete beam | 33. Sheath |
| 14. Insulation | 34. Dreaning sheet |
| 15. GRC panels | 35. Foundations |
| 16. Gres pavement tiles | 36. Weak-mix concrete |
| 17. Cartonfeltro | 37. Ground |
| 18. Self-leveling | 38. Concrete pillar |
| 19. Concrete screed | 39. Uprights and crosspieces system |
| 20. Prefabricated slab | 40. Insulation |
| | 41. Insulation |
| | 42. Brick |
| | 43. Connection bracket |