

# Stato di fatto

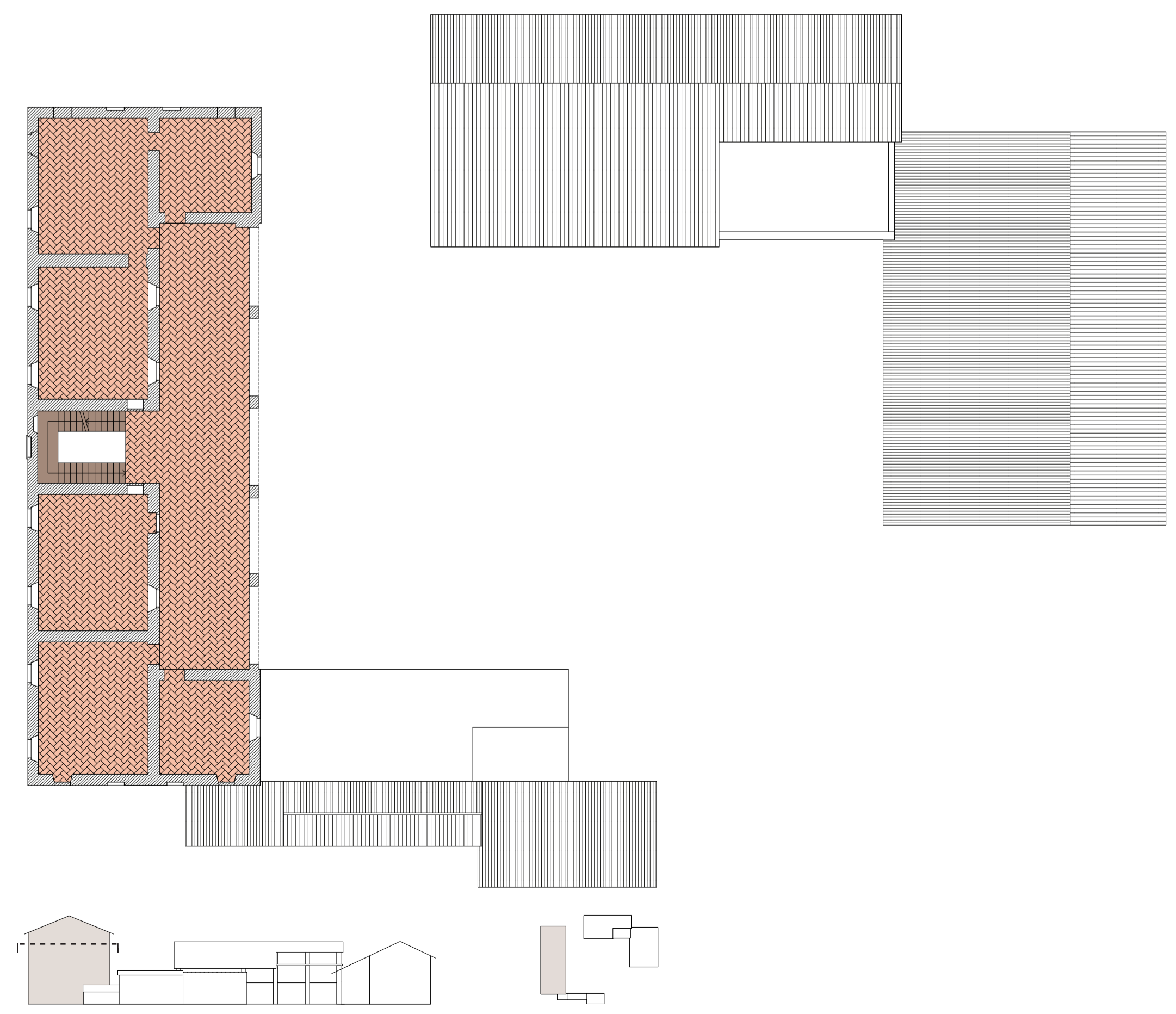
Rilievo materico



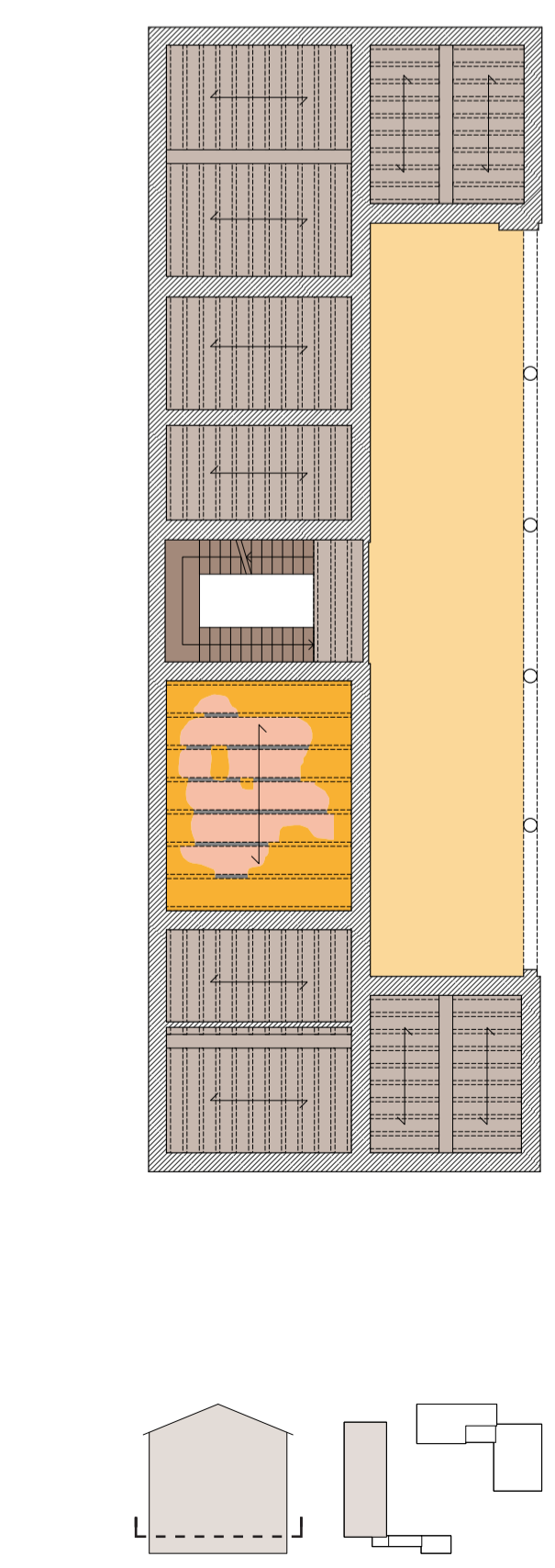
PIANTA PAVIMENTI  
Piano terra



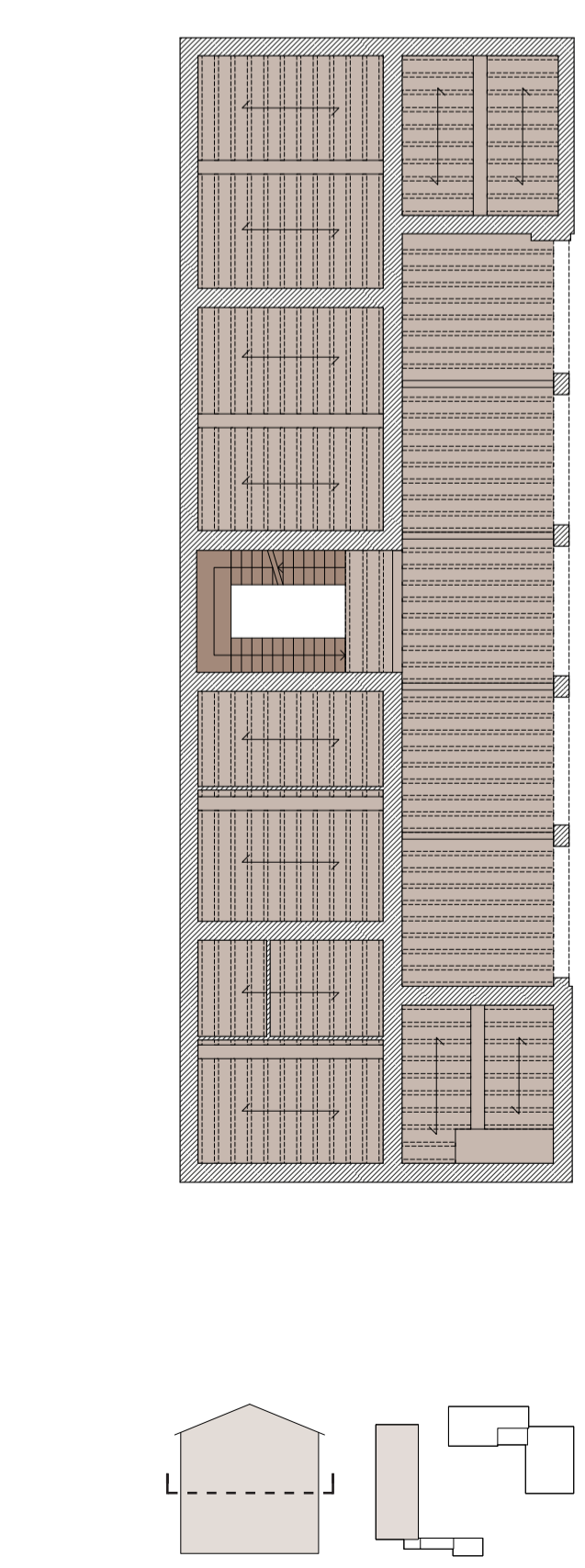
PIANTA PAVIMENTI  
Piano primo



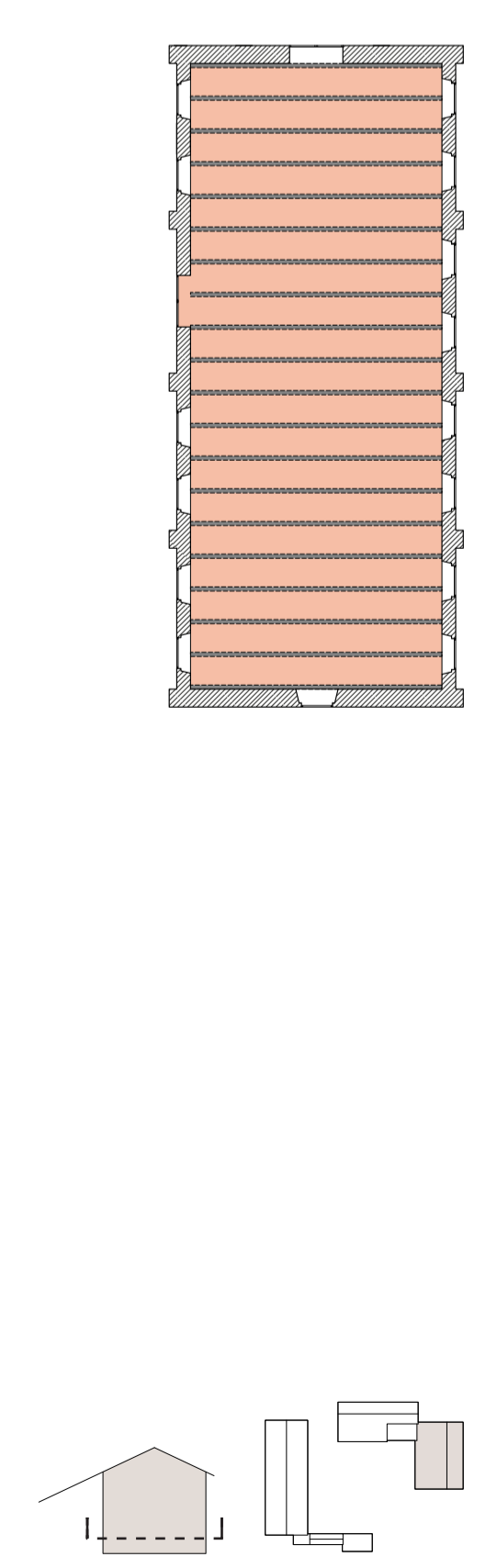
PIANTA PAVIMENTI  
Piano secondo



PIANTA SOFFITTI RIFLESSI  
Casa padronale Piano Terra



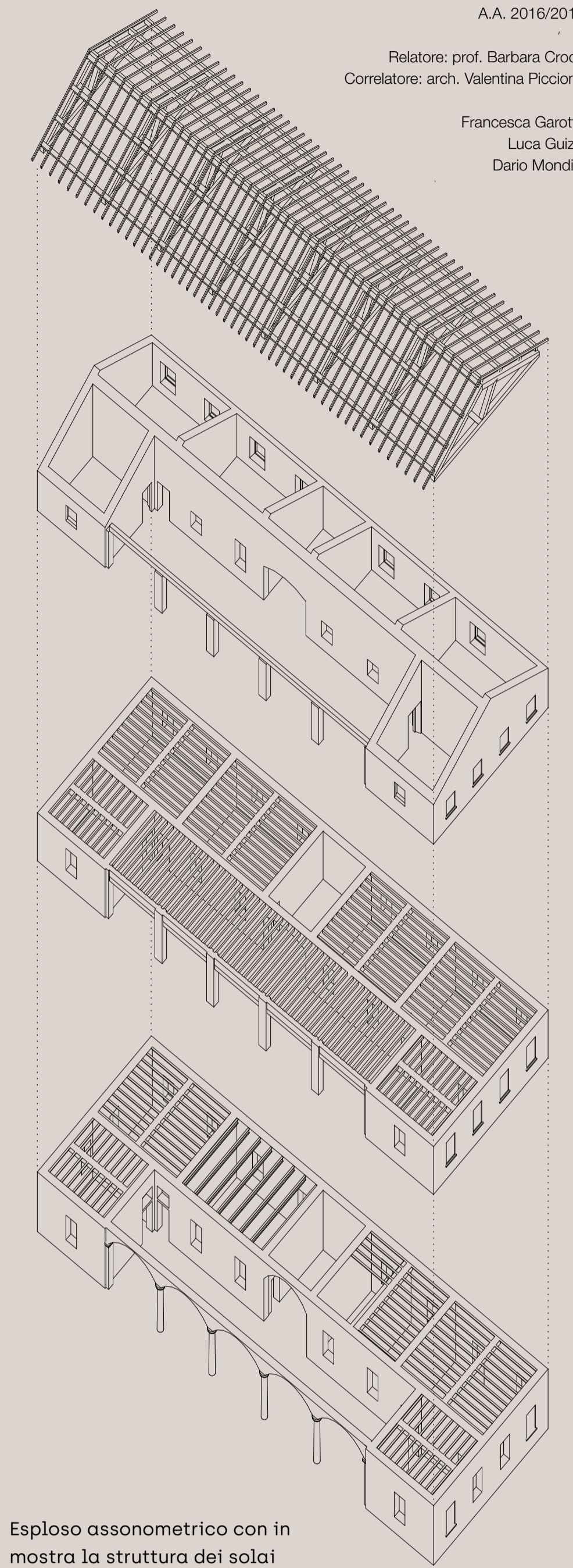
PIANTA SOFFITTI RIFLESSI  
Casa padronale Piano Primo



PIANTA SOFFITTO RIFLESSO  
Stalla bovini

## LEGENDA MATERIALI

- Cotto
- Ferro
- Calcestruzzo
- Piastrelle tipo 1
- Piastrelle tipo 2
- Legno
- Granito
- Intonaco 1
- Intonaco 2
- Ciottoli
- Mattoni



Esploso assometrico con in mostra la struttura dei soalì

