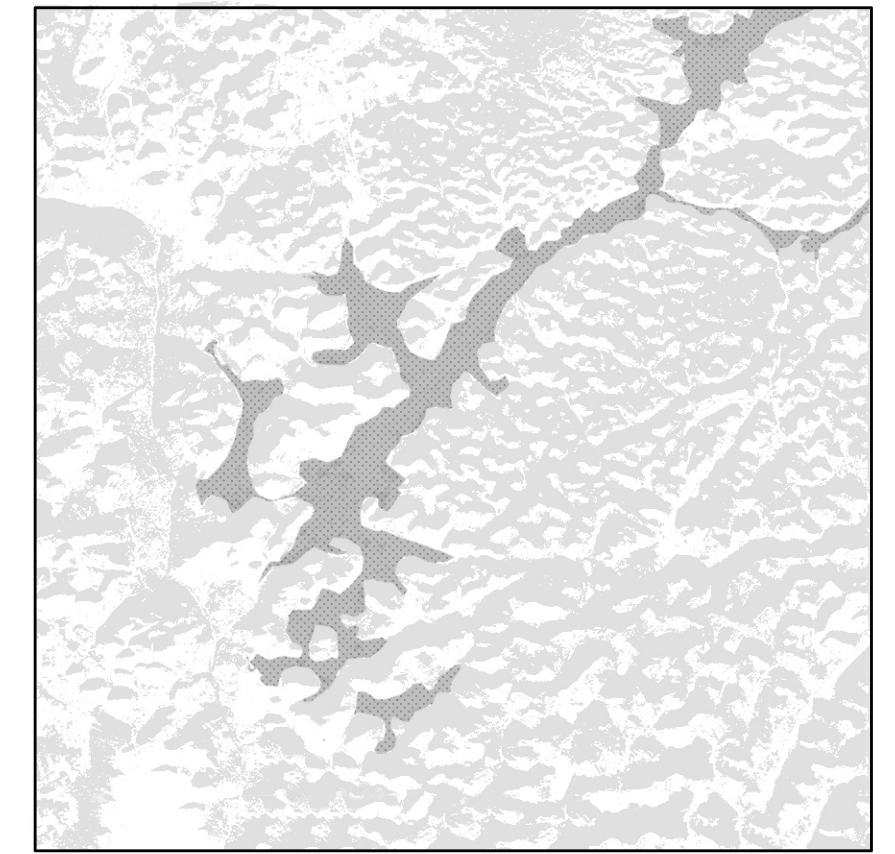
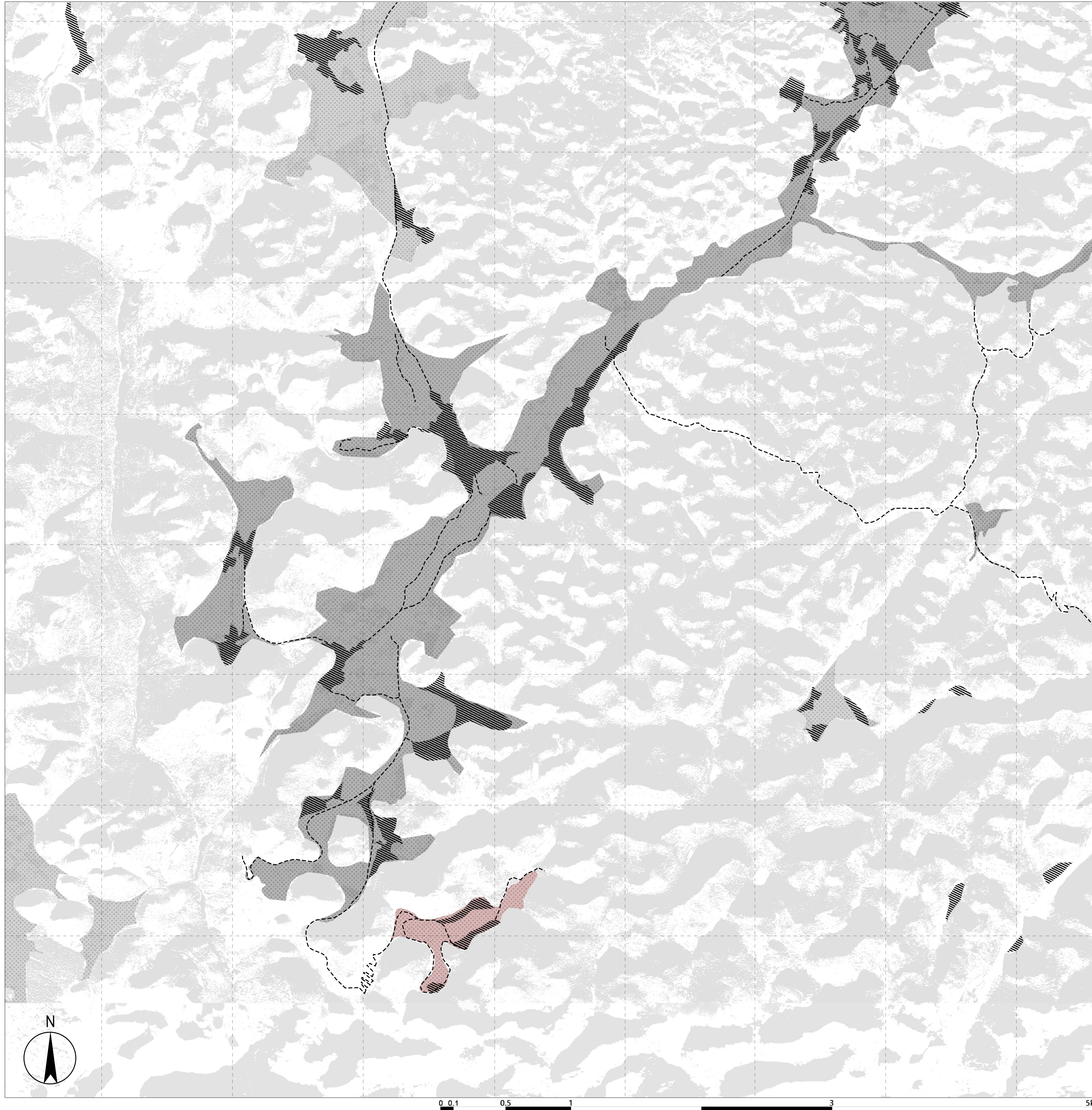
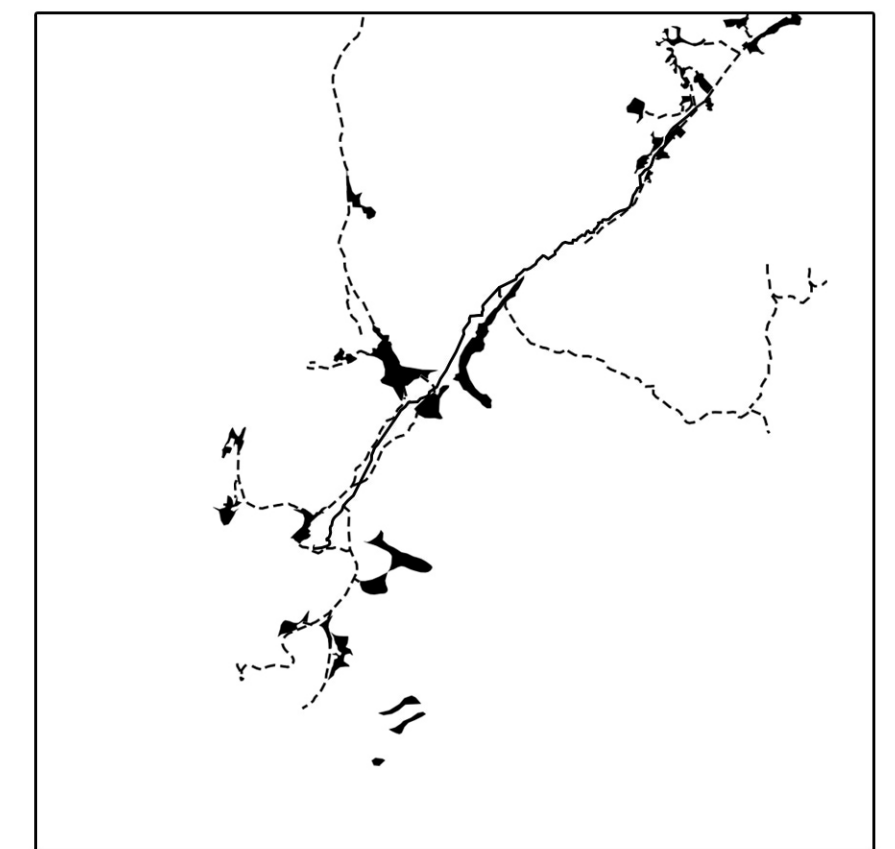


When we look into this mountainous area in Guizhou province, we can find a clear thread based on the chronicle of human activities. People start from a big valley, following the trace of water, farming the land on the open and flat area between mountains and habitated themselves along the foothill. When the main valley is fully planted, people went over the mountains and developed more farming land in the small valleys along the mainroute. In this way, the human civilization is spreaded into the nature.

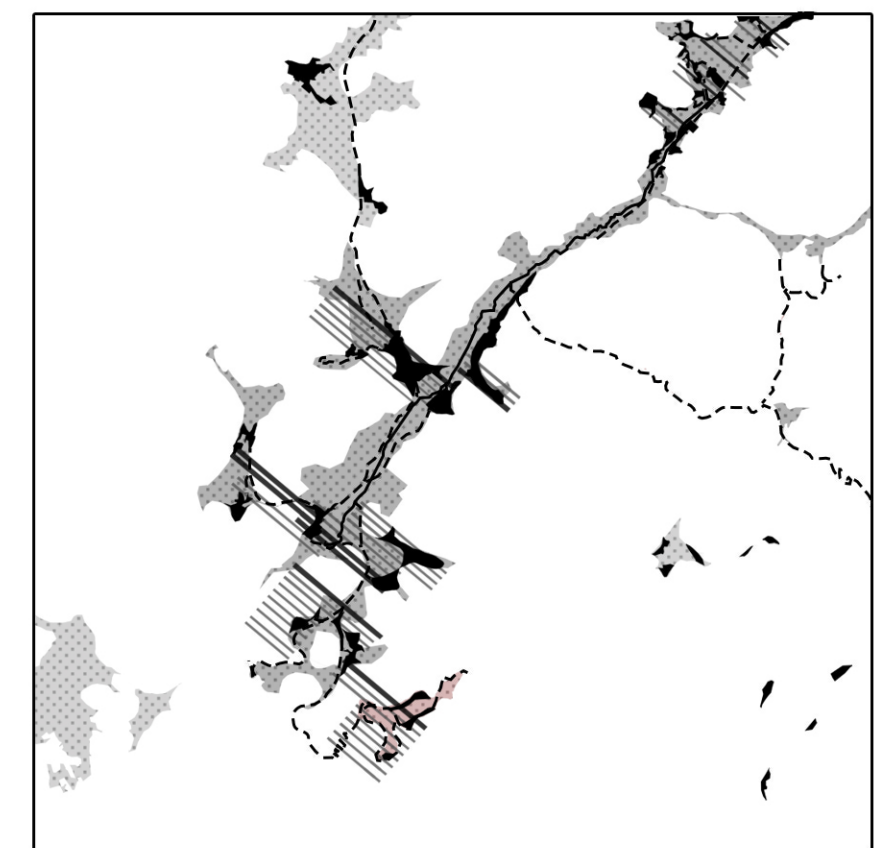
RIVER
 MAIN ROAD
 FARMLAND
 HABITATION
 PROJECT



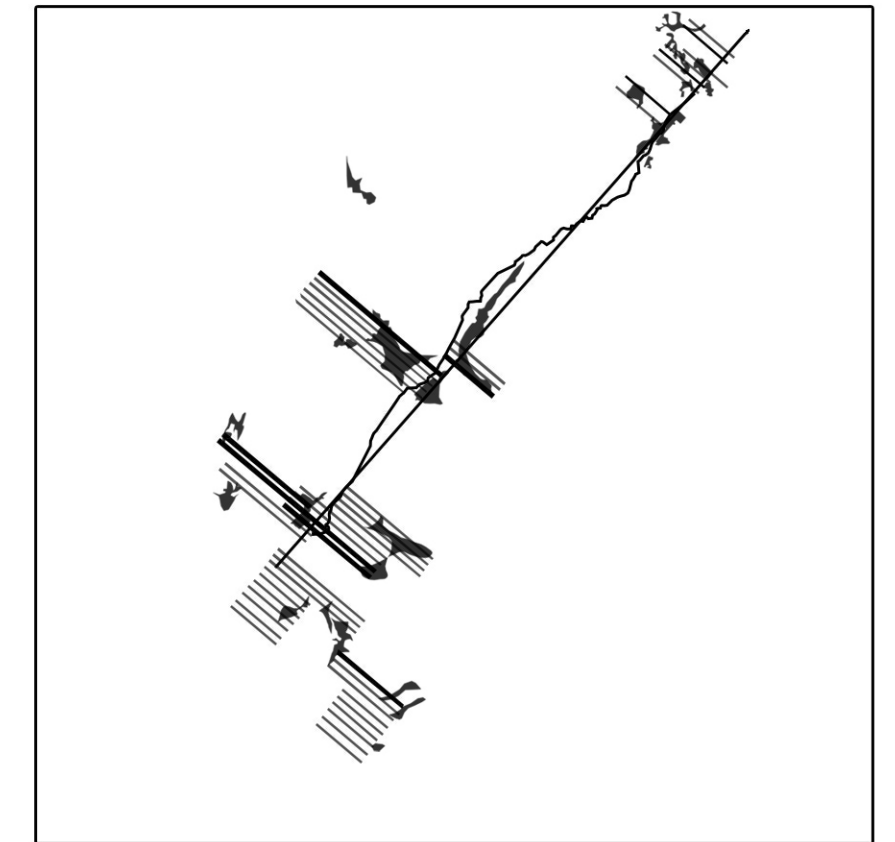
I TERRAIN



II HUMAN HABITATION DEVELOPMENT



III HUMAN PLANTATION



IV FORMING THE SEQUENCE