



THESIS BOOKLET
WORK IN FRAGMENTS

MASTER THESIS IN SUSTAINABLE ARCHITECTURE AND LANDSCAPE DESIGN
PROFESSORS: GUYA BERTELLI
MARIO MORICA
STUDENTS: EVGENY ZELENOV
LIU BING

TABLE OF CONTENTS

1. ABSTRACT
2. ANALYSIS OF THE PARIS
3. PUBLIC SPACE ANALYSIS
4. SITE ANALYSIS
5. MASTERPLAN
6. SITE PLAN
7. GROUND FLOOR PLAN
8. UNDEGROUND FLOOR PLAN
9. SECTION A-A
10. SECTION B-B
11. SECTION C-C
12. ELEVATION EAST
13. ELEVATION WEST
14. 3D SECTION
15. DETAIL
16. BIBLIOGRAPHY



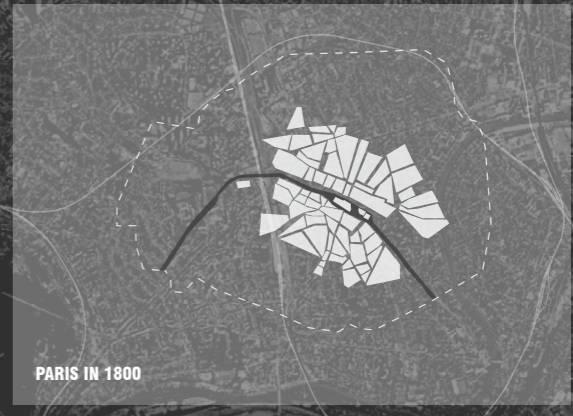
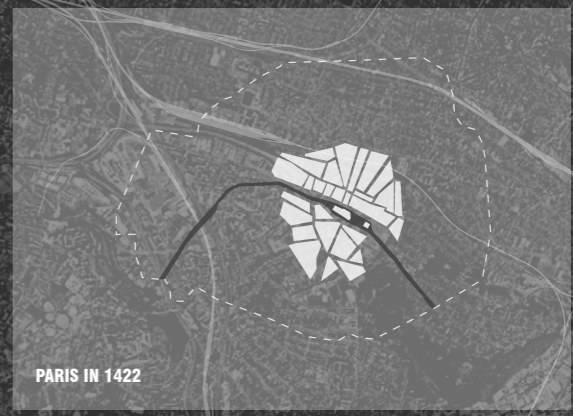
The idea itself based on philosophical approach between connection the urban city and nature and human mind with knowledge.

By creating different attractive points along the promenade we provided an invisible push for people to move to the library. Based on Japanese philosophy of the courtyard we have created a system that moves people to a new social place between Citroen park and Maison Radio that involve them in a pure art that are books. As a result the Path lead us from the nature context to the urban. There are five intersection points: the spiritual path, which consists from public oriental point threw the leisure pots walking on promenade, where the end of path is library. Our philosophy based on the idea, that walking by path there will appear a wish to read a books. Where in the end library acts as a possibility to have experience of knowledge and to improve the life by fragmental work.

CITY : FRAGMENTS

THIS ANALYSIS IS MAINLY ABOUT AN OVERVIEW OF THE SOCIAL AND POLITICAL SITUATION IN PARIS. IN THE FOLLOWING ANALYSIS, WE CAN SEE THAT THE ARTIFICIAL PARTITION DIVIDES PARIS INTO A CITY COMPOSED OF FRAGMENTS (ARRONDISSEMENT) OF POLITICAL PARTITIONS. BECAUSE OF THE SELF-MANAGEMENT UNITS OF EACH FRAGMENT GENERATED BY PARTITION, PARIS HAS BECOME A FRAGMENTED CITY ON A CERTAIN LEVEL. MOREOVER, THIS PARTITION STRATAGE HAS INCREASED THE POLITICAL AND ECONOMIC DIFFERENCES BETWEEN SUB-REGIONS AND BLOCKED DIALOGUE. OUR PROJECT AREA IS ON THE BORDERS OF THE 15TH AND 16TH ARRONDISSEMENT AND RIGHT BESIDE SEINE RIVER, WHICH GIVES US A GOOD OPPORTUNITY FOR DIALOGUE BETWEEN THE TWO ARRONDISSEMENTS.

EVOLUTION OF PARIS



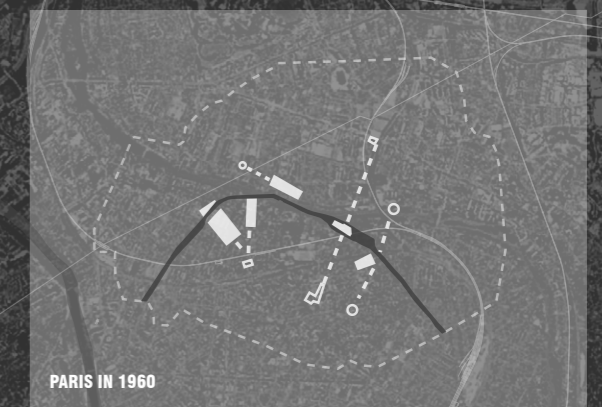
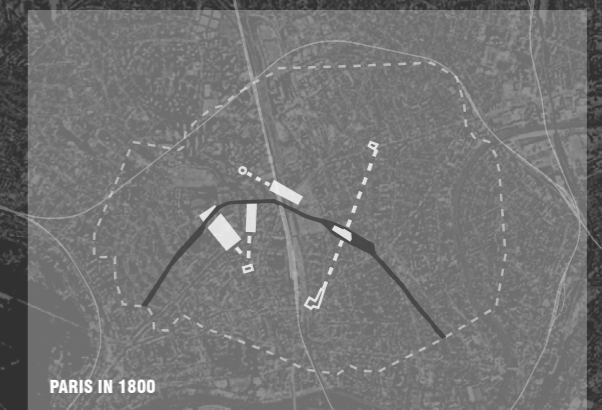
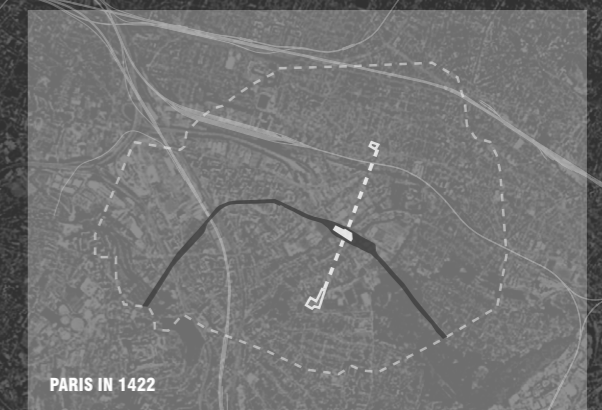
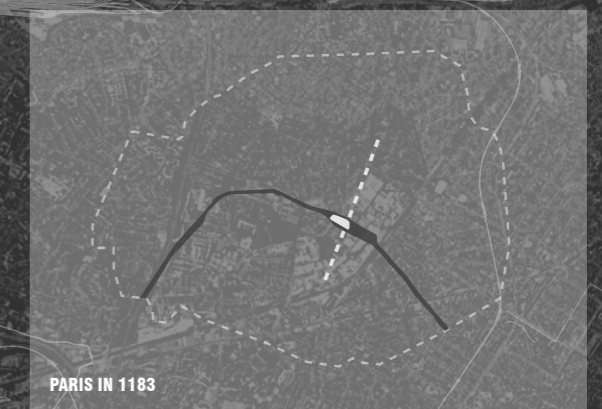
PROJECT AREA

READ PARIS 1

CITY : SEINE AND CITY GRID

PARIS IS FOUNDED ON THE SEINE. FROM THE FOLLOWING DIAGRAM WE CAN SEE THAT THE PARIS CITY GRID ORIGINATES FROM THE SEINE, AND THE GEOMETRIC RELATIONS BETWEEN PARIS AND THE SEINE DEFINE THE PARIS CITY PATTERN. NOW THE ORIGIN OF THESE GRIDS IS ALSO THE MAIN ENERGY GATHERING PLACE. WE HOPE TO RESPECT THIS URBAN TRADITION AT THE PROJECT SITE AND DESIGN A PUBLIC PLACE THAT CONNECTS THE TWO PARTS OF THE CITY. THIS PROJECT IS ALSO AN IMPORTANT GATHERING POINT FOR PARIS IN THE FUTURE.

EVOLUTION OF PARIS GRID

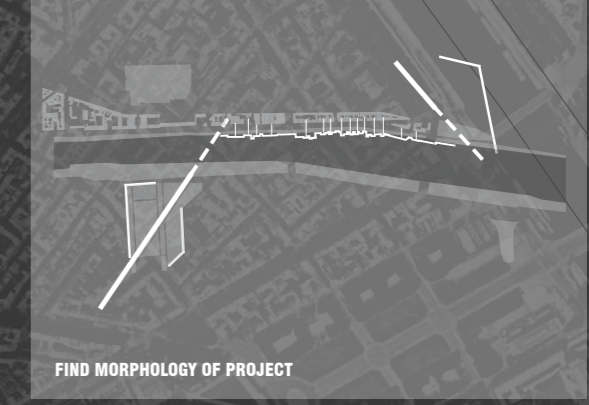


READ PARIS 2

SITE : TRACES AND VOIDS

TRACES HERE CAN BE UNDERSTOOD AS STREETS, COURTYARDS, ROADS AND RIVERFRONTS OF BOTH SIDE, WHICH ARE A KIND OF LINEAR VOID SPACE AND CAN BE FULLY INTEGRATED INTO A NEW URBAN LANDSCAPE
VOIDS INCLUDING URBAN NATURAL SPACE SUCH AS PARKS AND URBAN ABANDONED SPACE SUCH AS PARKING LOTS. THE LATTER IS THE CONSEQUENCE OF URBAN EXPANSION AND HAS POTENTIAL TO BE TRANSFORMED IN A NEW URBAN LANDSCAPE. THESE TWO KIND OF VOIDS CAN BE COMBINED AND INTEGRATED INTO A LANDSCAPE SYSTEM.

EVOLUTION OF STRATEGY

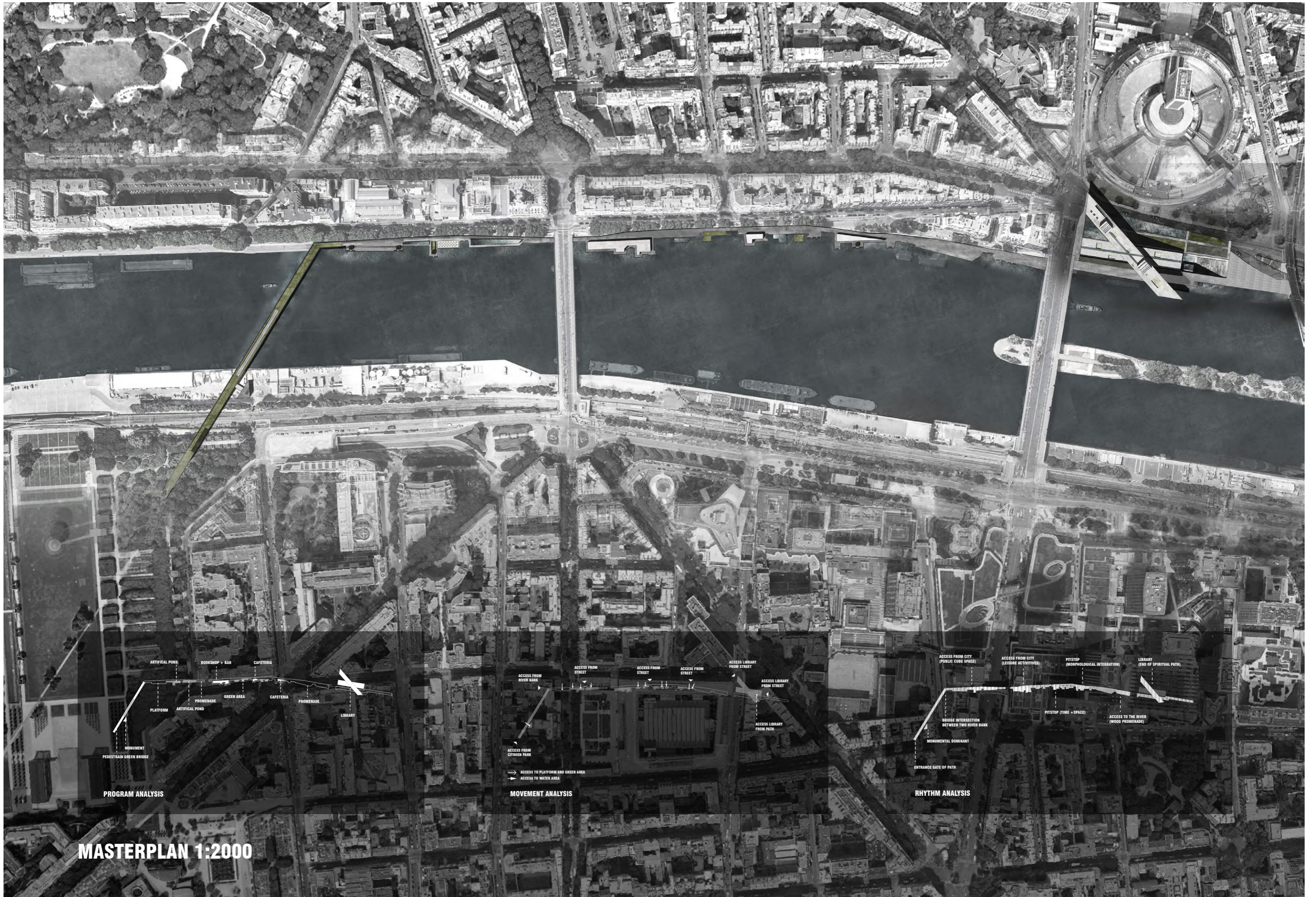


- HIGHLIGHT OF AXIS AND TRACES
- HIGHLIGHT OF VOIDS
- HIGHLIGHT OF MORPHOLOGICAL PATTERN OF PROJECT AREA

READ SITE 1

“An architect should never rationalize a change in purely aesthetic terms, you know that. He should give the client a pragmatic reason for doing it.” Lucien”

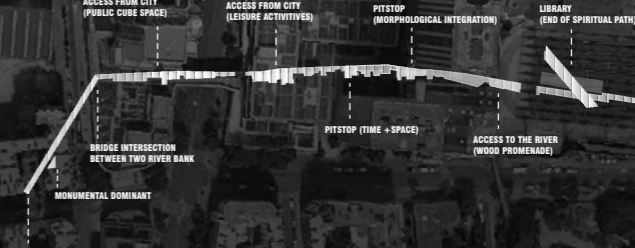
Charles Belfoure, The Paris Architect



PROGRAM ANALYSIS



MOVEMENT ANALYSIS

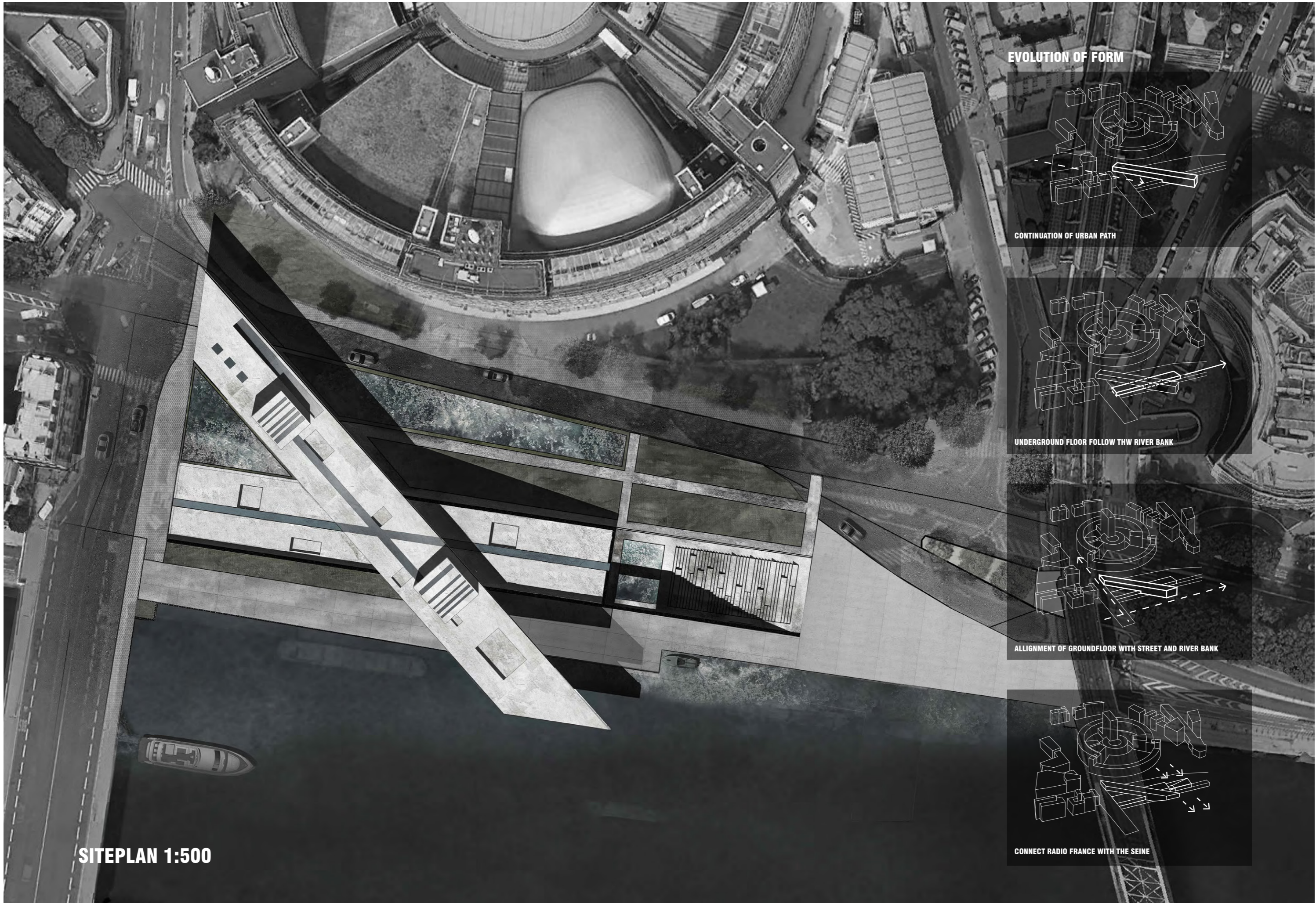


RHYTHM ANALYSIS

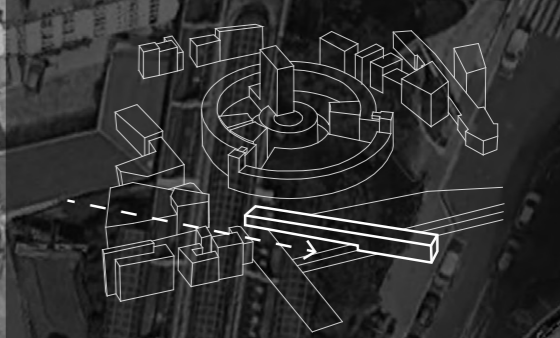
MASTERPLAN 1:2000

“The whole of Paris is a vast university of Art, Literature and Music... it is worth anyone’s while to dally here for years. Paris is a seminar, a post-graduate course in everything.”

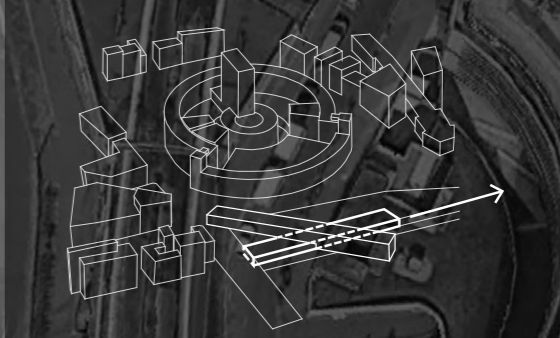
James Thurber



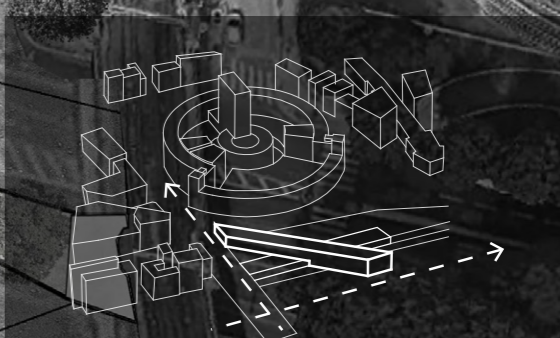
EVOLUTION OF FORM



CONTINUATION OF URBAN PATH



UNDERGROUND FLOOR FOLLOW THW RIVER BANK



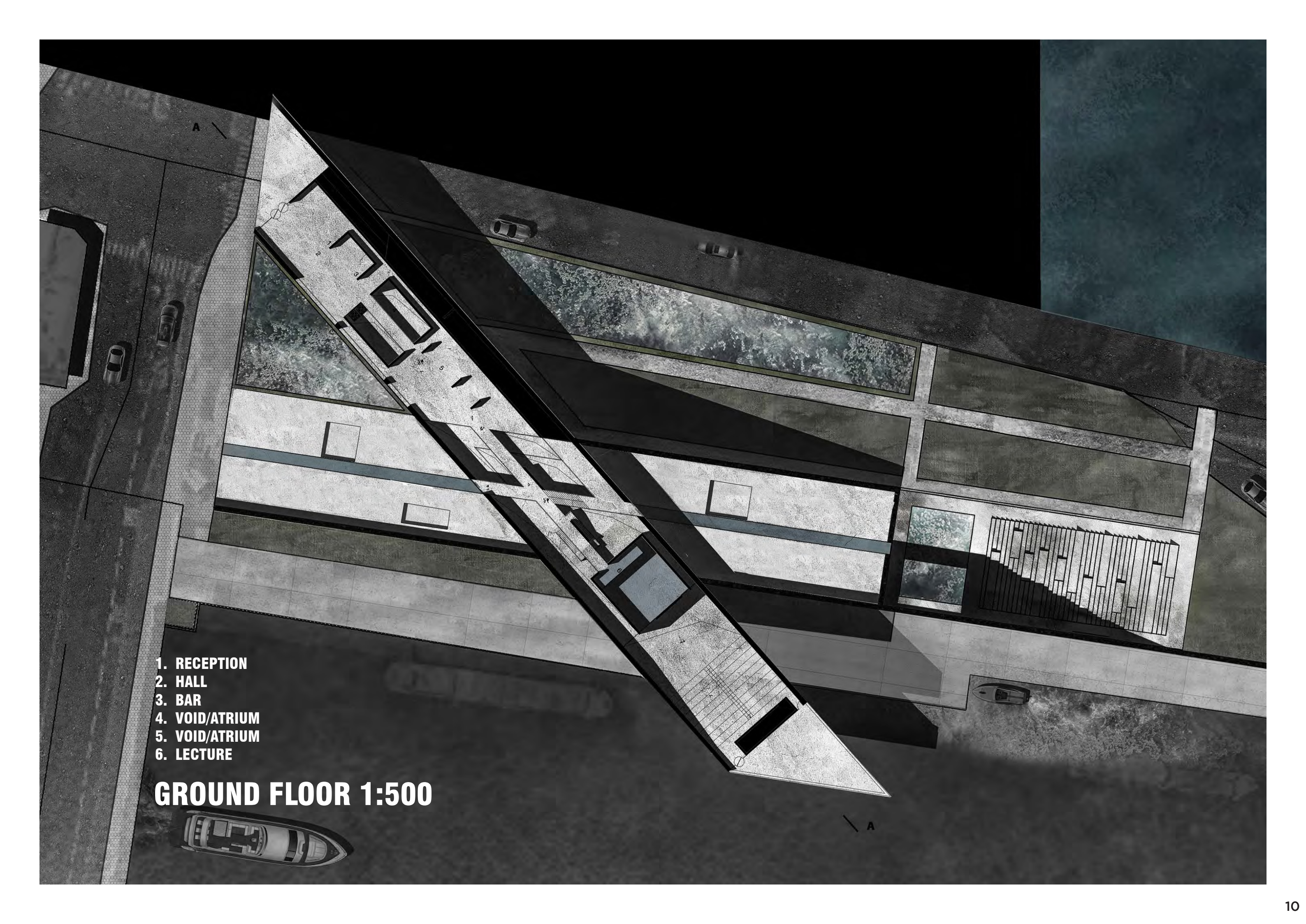
ALIGNMENT OF GROUND FLOOR WITH STREET AND RIVER BANK



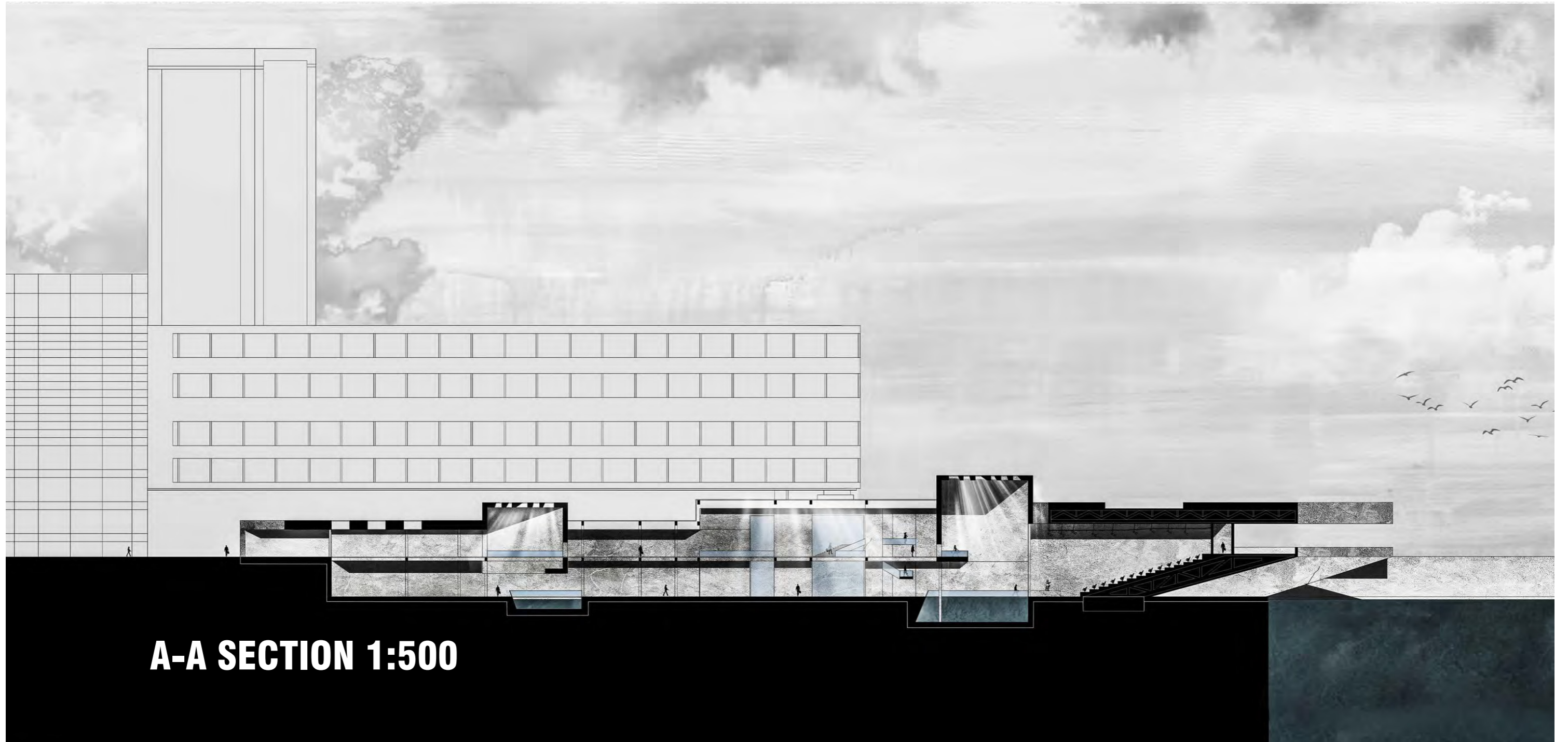
CONNECT RADIO FRANCE WITH THE SEINE

SITEPLAN 1:500

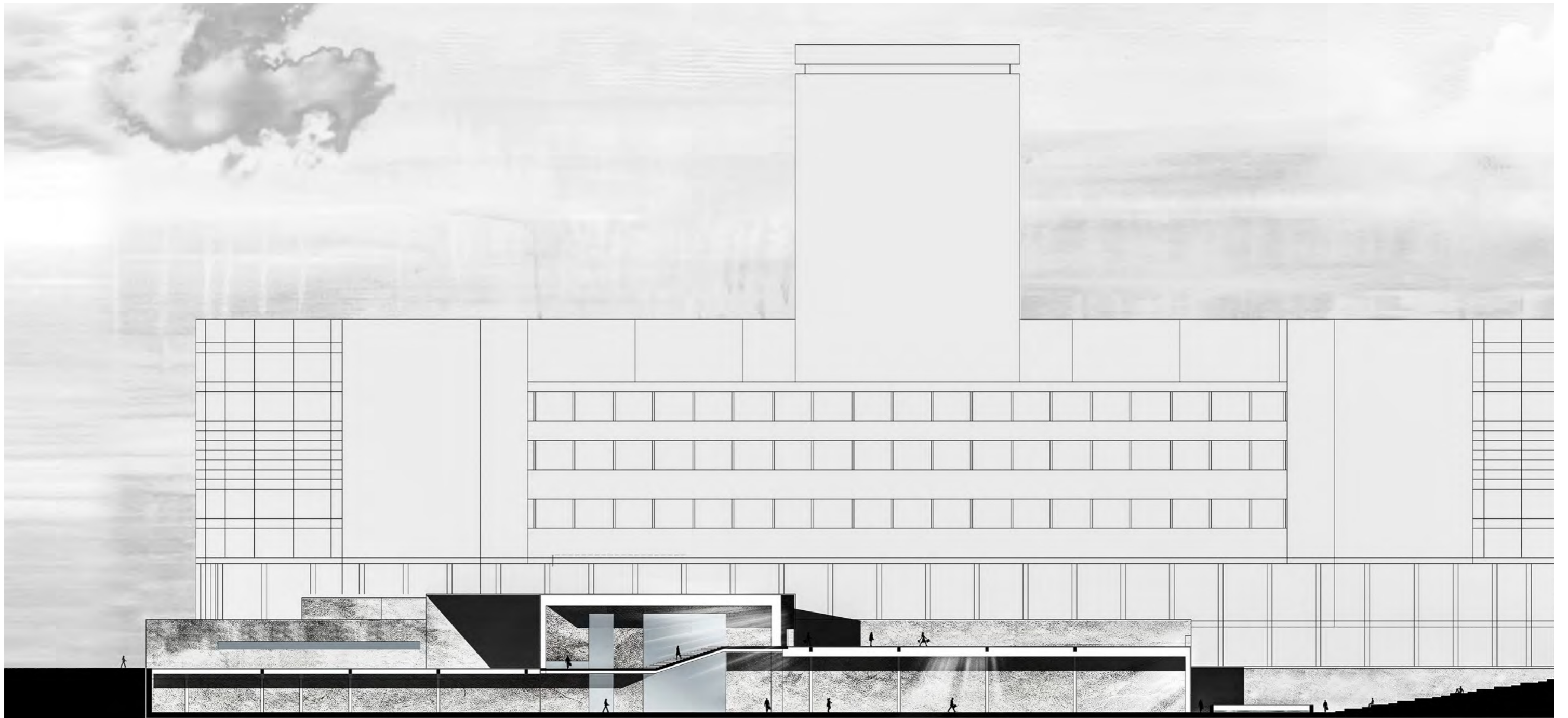
**“You never change things by fighting the existing reality.
To change something, build a new model that makes the existing model obsolete.”
R. Buckminster Fuller**

- 
- An architectural ground floor plan of a building, shown in a dark, monochromatic style. The plan is oriented vertically, with a long, narrow central section. The building is surrounded by a paved area with several cars parked. A large, dark, rectangular area is visible on the right side of the plan, possibly representing a courtyard or a large window. The plan includes a legend in the bottom left corner and a scale of 1:500. The legend lists six numbered items: 1. RECEPTION, 2. HALL, 3. BAR, 4. VOID/TRIUM, 5. VOID/TRIUM, and 6. LECTURE. The plan also features a section line 'A' at the top and bottom, and a north arrow pointing towards the top right.
1. RECEPTION
 2. HALL
 3. BAR
 4. VOID/TRIUM
 5. VOID/TRIUM
 6. LECTURE

GROUND FLOOR 1:500



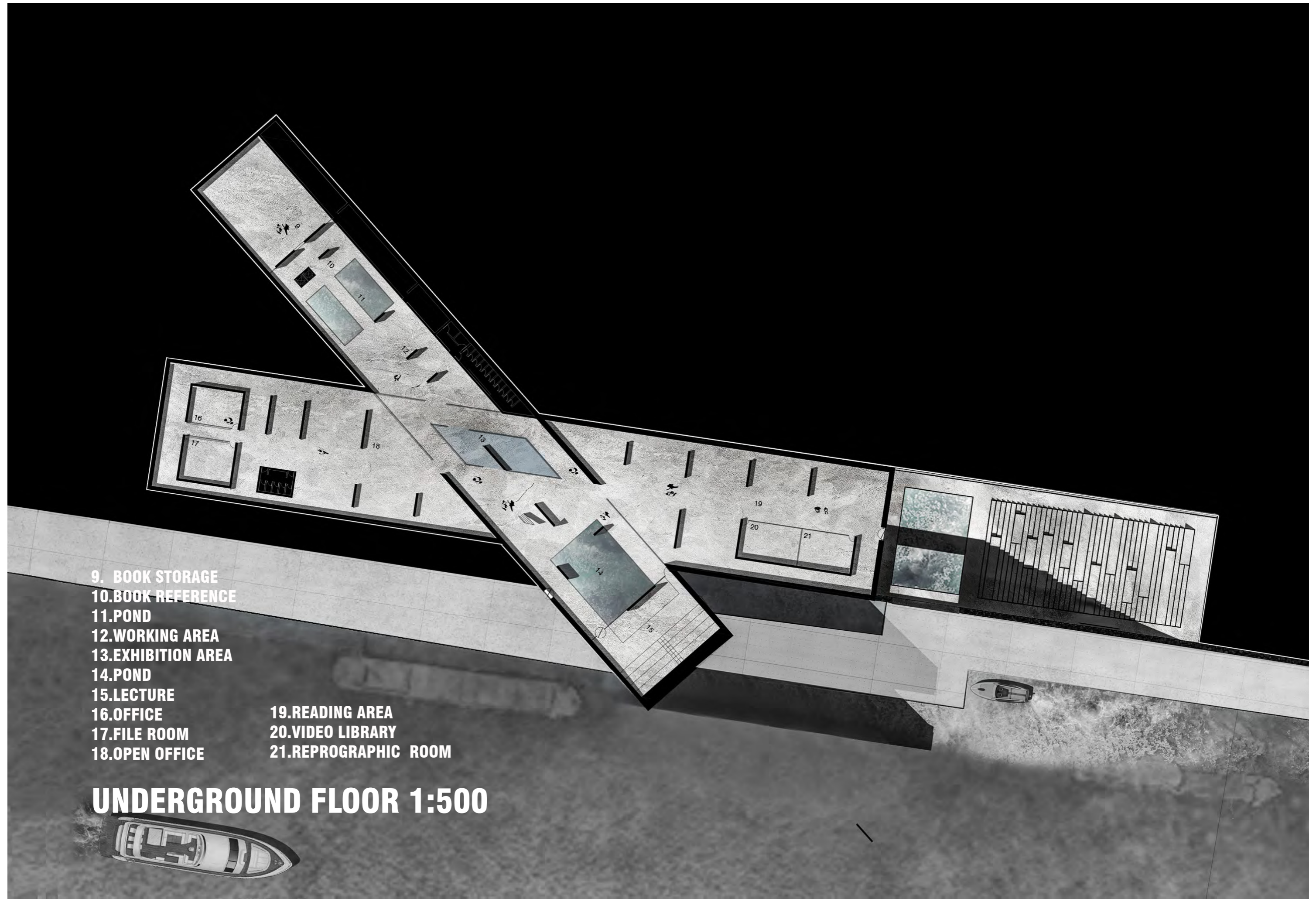
A-A SECTION 1:500



B-B SECTION 1:500

- 9. BOOK STORAGE
- 10. BOOK REFERENCE
- 11. POND
- 12. WORKING AREA
- 13. EXHIBITION AREA
- 14. POND
- 15. LECTURE
- 16. OFFICE
- 17. FILE ROOM
- 18. OPEN OFFICE
- 19. READING AREA
- 20. VIDEO LIBRARY
- 21. REPROGRAPHIC ROOM

UNDERGROUND FLOOR 1:500



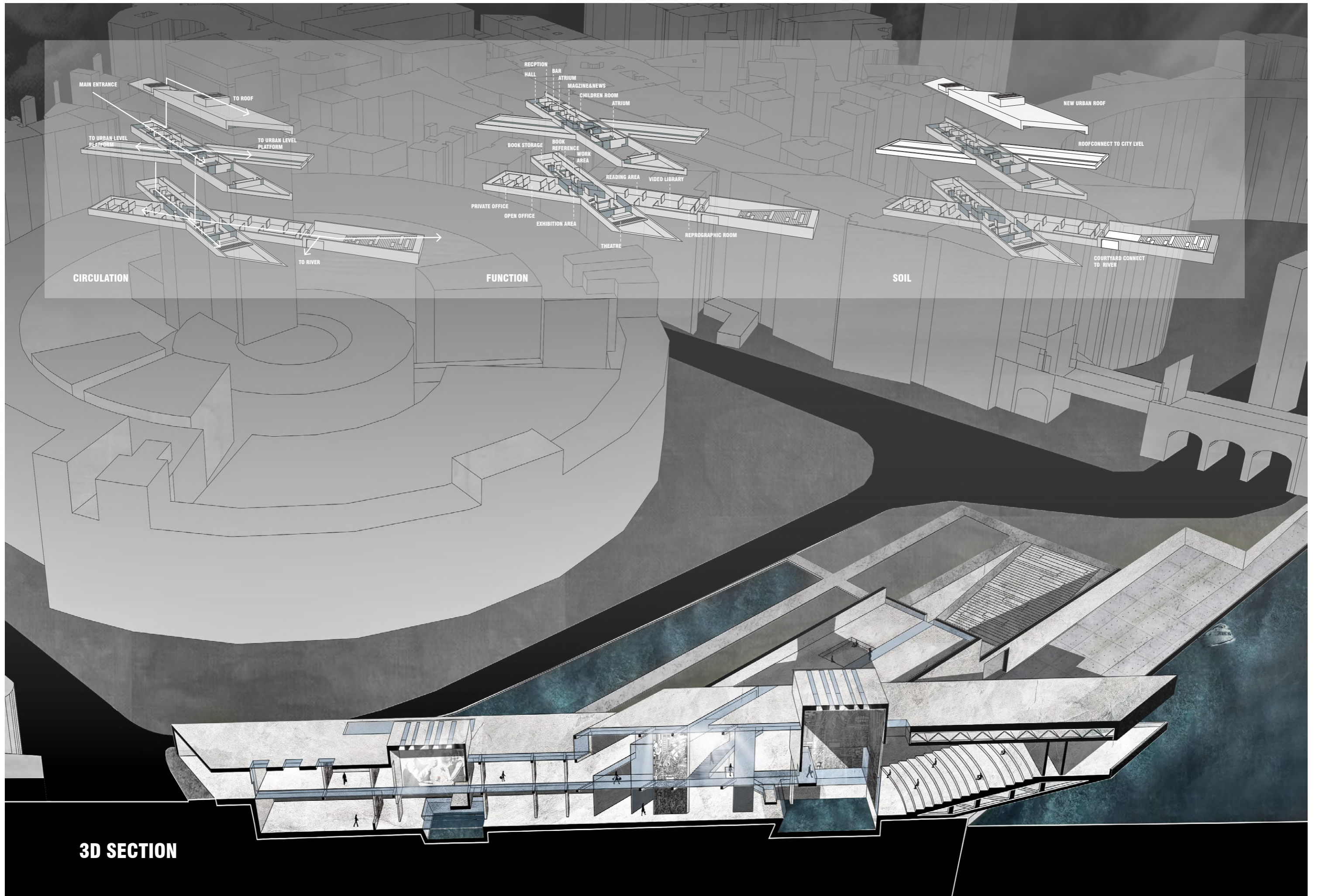


WEST ELEVATION 1:500

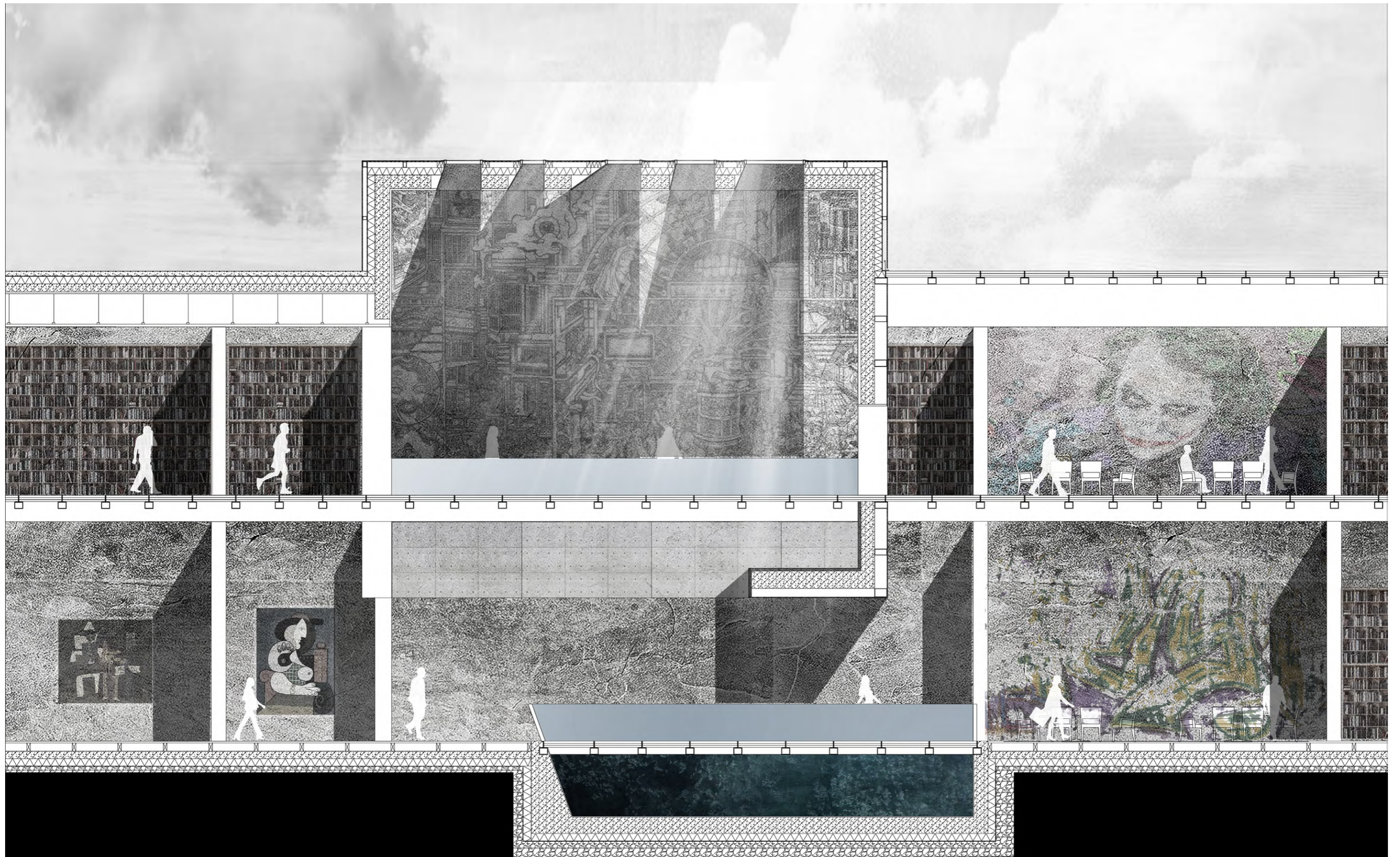


SOUTH EAST ELEVATION 1:500





3D SECTION



DETAIL 1:50

BIBLIOGRAPHY

A. David Young (Author), Michiko Young (Author), Tan Hong Yew (Illustrator) , “The Art of Japanese Architecture”, P 213

PAGE IN TEXT 1

B. Charles Belfoure, “The Paris Architect”, 2013, P 67,

PAGE IN TEXT 5

C. James Thurber “QUOTES” 1939, <http://ecosalon.com/50-best-quotes-about-paris/>,

PAGE IN TEXT 7

D. R. Buckminster Fuller “Operating Manual for Spaceship Earth” , 1968, P 34

PAGE IN TEXT 9