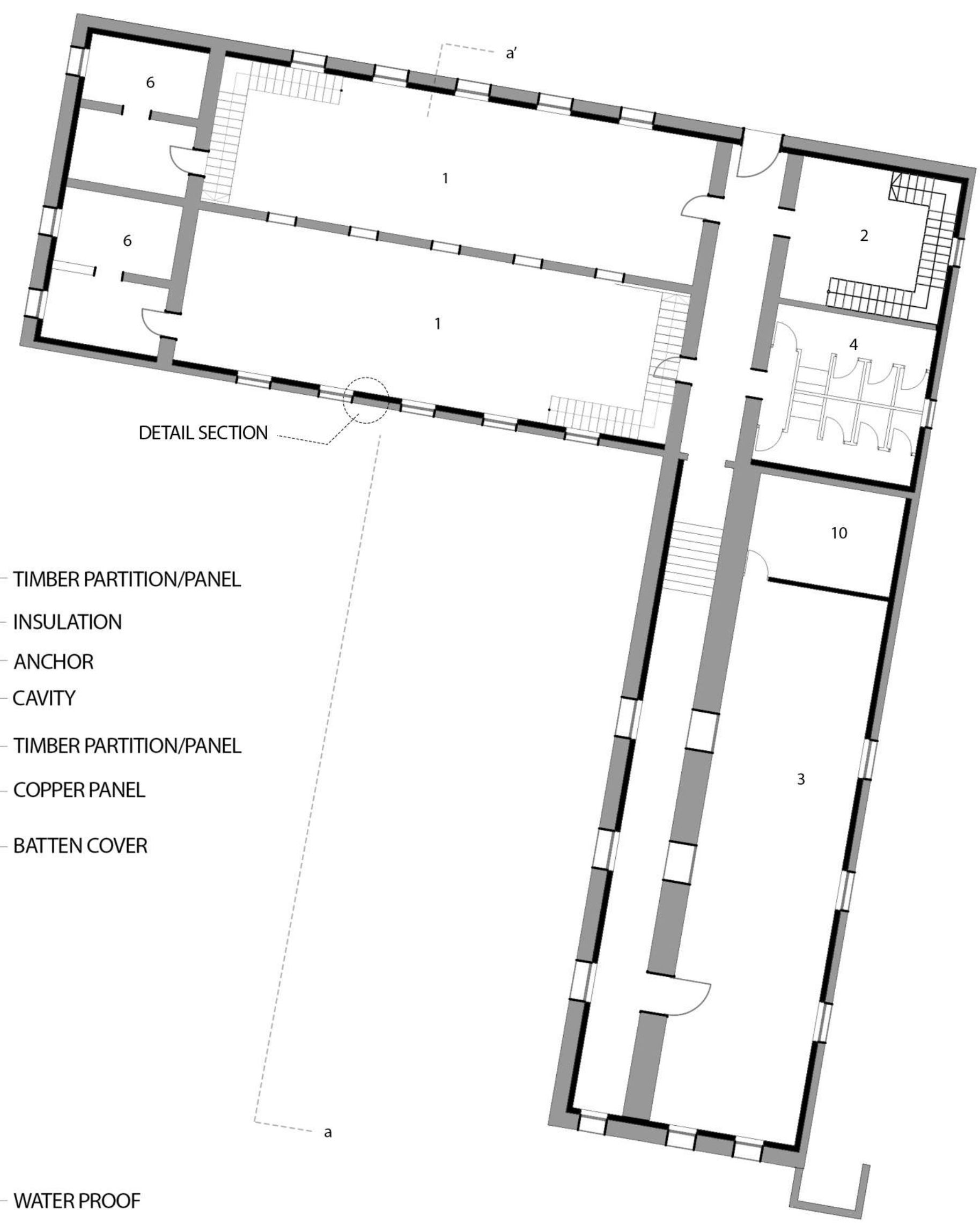
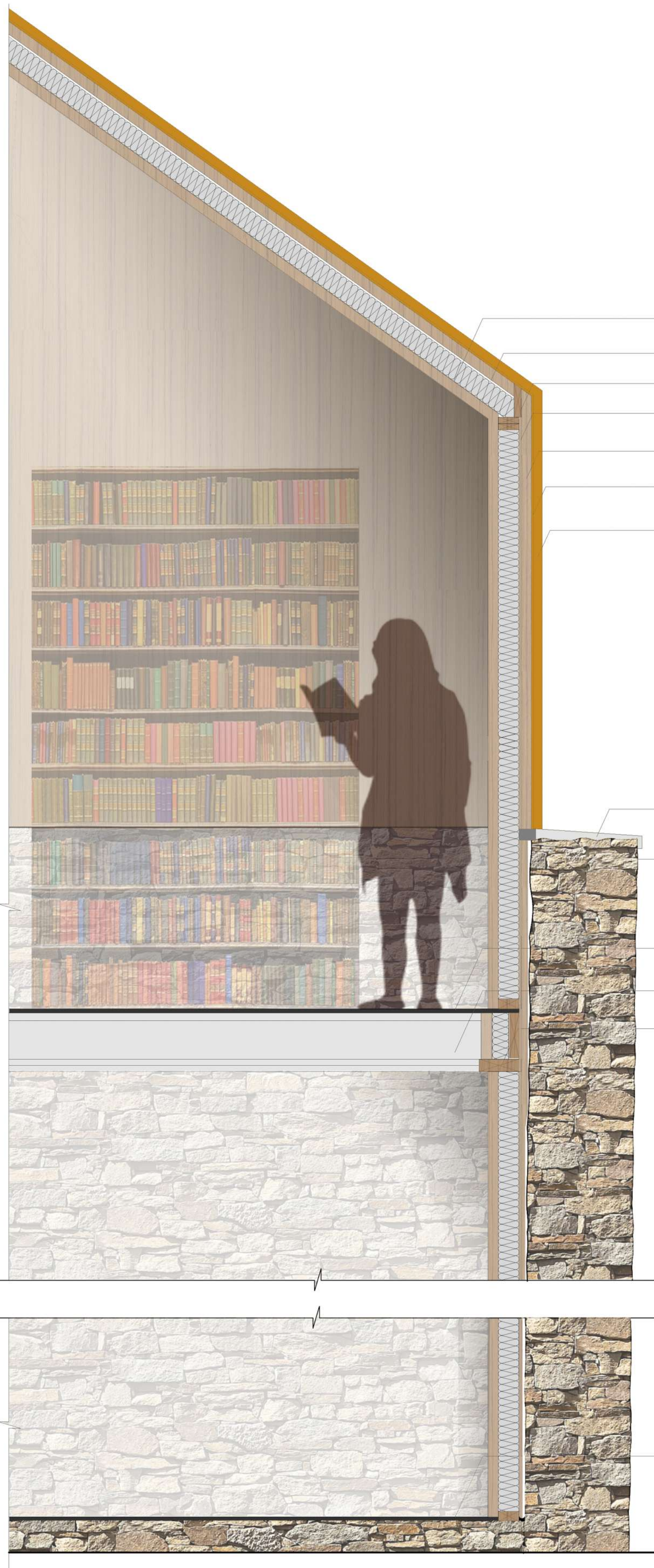


LIBRARY



GROUND FLOOR PLAN



TOP FLOOR PLAN

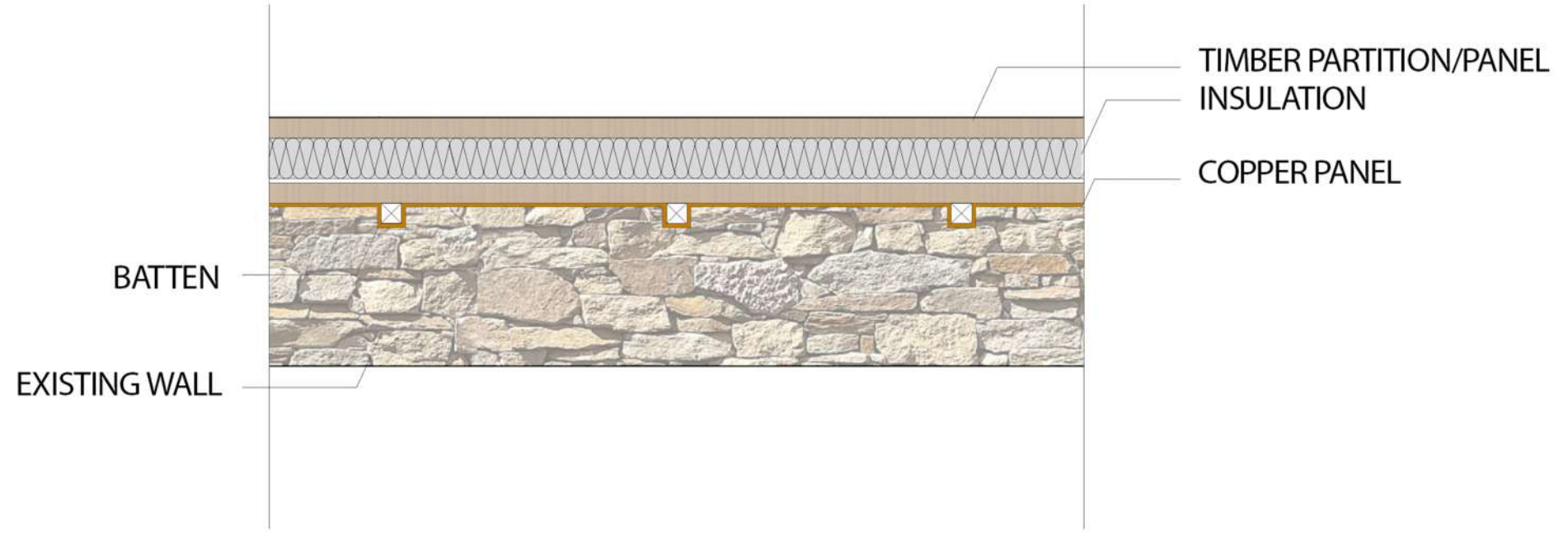
- 1. reading area
- 2. info point/receptionist
- 3. multipurpose room
- 4. restroom
- 5. librarian spot
- 6. archive room
- 7. staff room
- 8. meeting room

Library as the place where historical relics and documents are stored, it has to give tremendous chance for people to gain knowledge which in meantime can feel the existence of the past and enjoying the views. The building is located right after the internal gate in order to give direct movement for users as well as giving different ambience of space typology, it can be clearly seen that the chosen structure as library is isolated but taking advantage of this situation will give the sense of calmness which is very suitable for people who want to study.

The technology for this structure is to remain wall as it was and putting new constructional intervention covered by copper insulation and supported by steel structural frame. Inside, the old wall will be designed to have level upper to provide more space for reading and offices as well as to connect all activities since the ground floor plan is more segregated.



SECTION A-A



DETAIL SECTION 1:20

