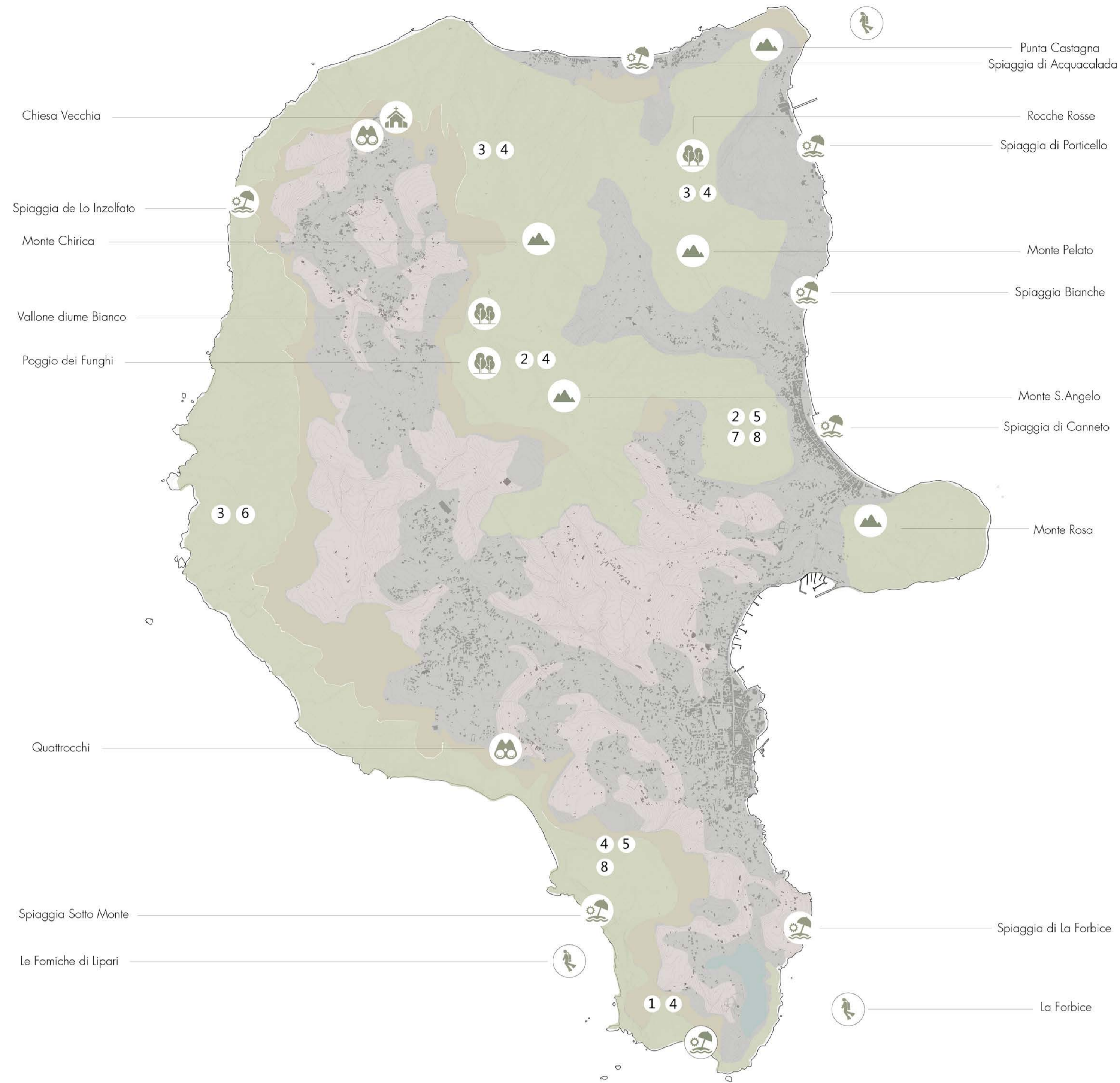


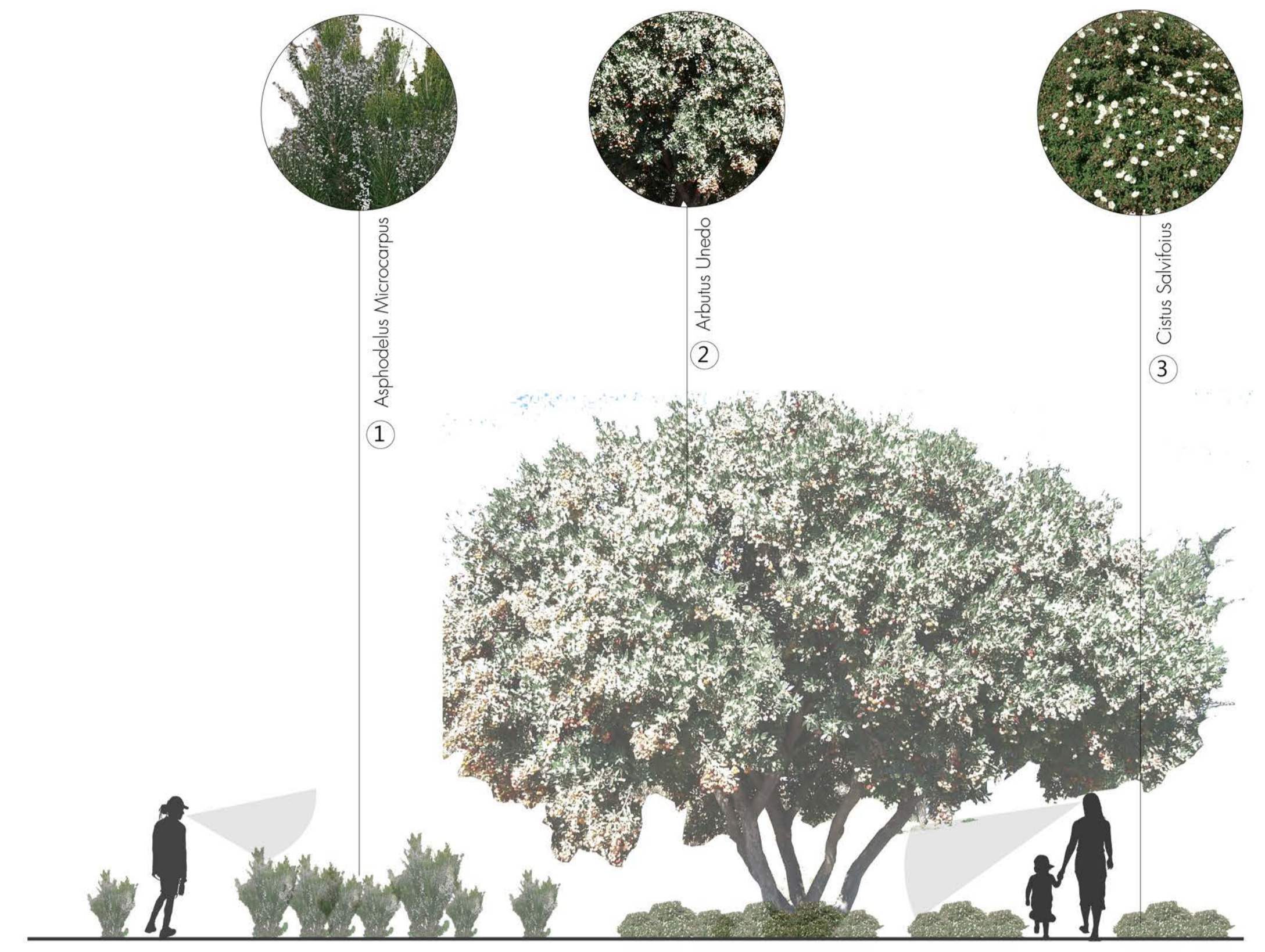
SOURCES
 www.googlemaps.it
 www.wikipedia.com
 www.comunelipari.it
 www.istat.it
 www.unesco.it
 www.booking.com
 www.tripadvisor.it
 www.libertylines.it
 www.traghetti.com

NATURAL PRESERVATION AREA ANALYSIS 1:2 5000 000

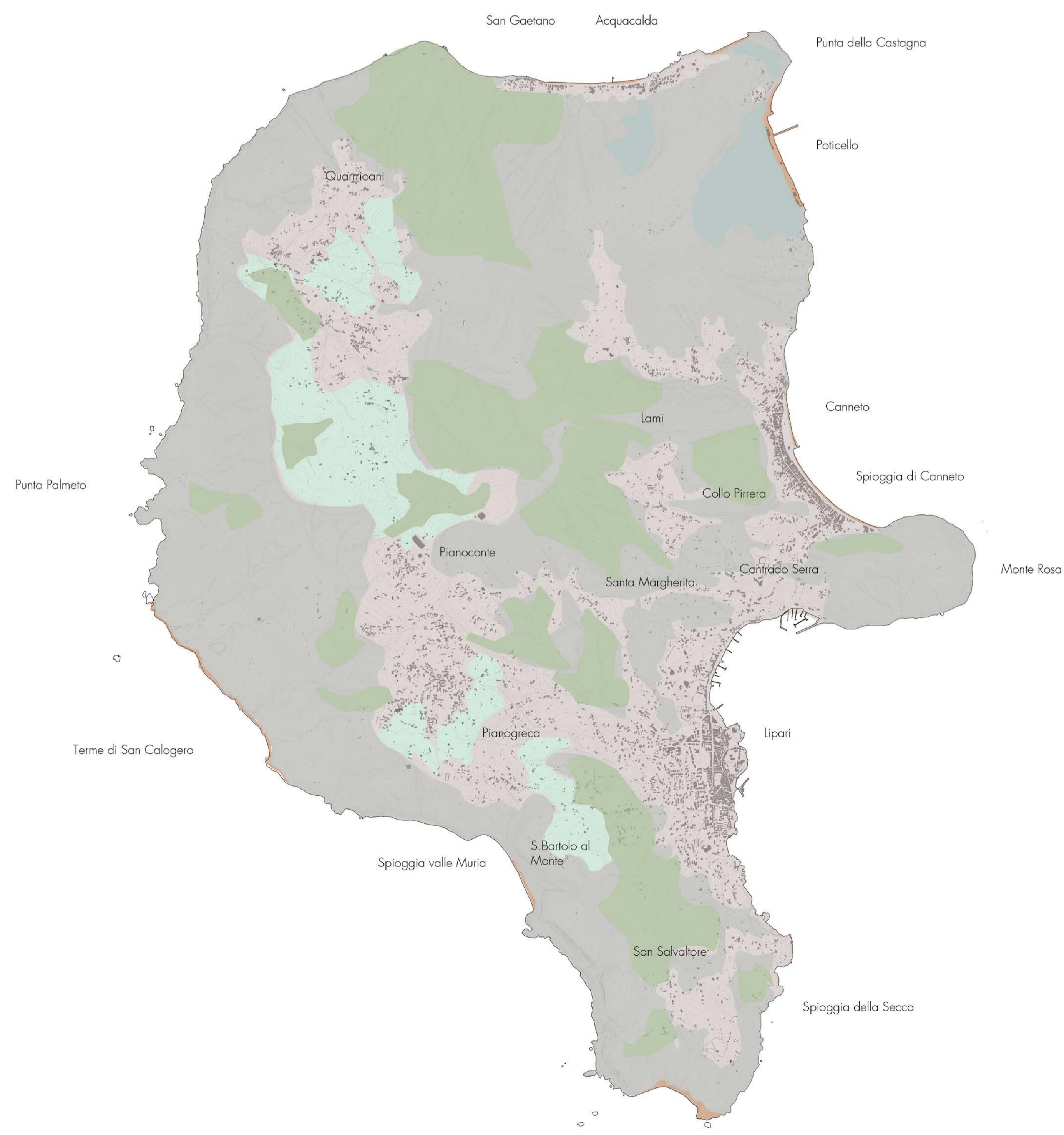


- Diving Area
- Beach
- Relevant Forest
- Relevant Church
- View Point
- Relevant Mountain
- Primary Natural Preservation Area
- Secondary Natural Preservation Area
- Non-Preservation Area
- Urban Area
- ① Asphodelus Microcarpus
- ② Arbutus Unedo
- ③ Cistus Salviifolius
- ④ Erica Aborea
- ⑤ Fraxinus Ornus
- ⑥ Genista Radiata
- ⑦ Teline Monspensulana
- ⑧ Quercus Rotundifolia

RELATIONSHIP BETWEEN HUMAN AND NATIVE VEGETATION



LANDFORM ANALYSIS 1:2 5000 000



- Beach
- Quarry
- Urban Area
- Agriculture
- Green Area With A Few Vegetation
- Green Area With A Lot Of Vegetation

VEGETATION ANALYSIS OF LIPARI ISLAND