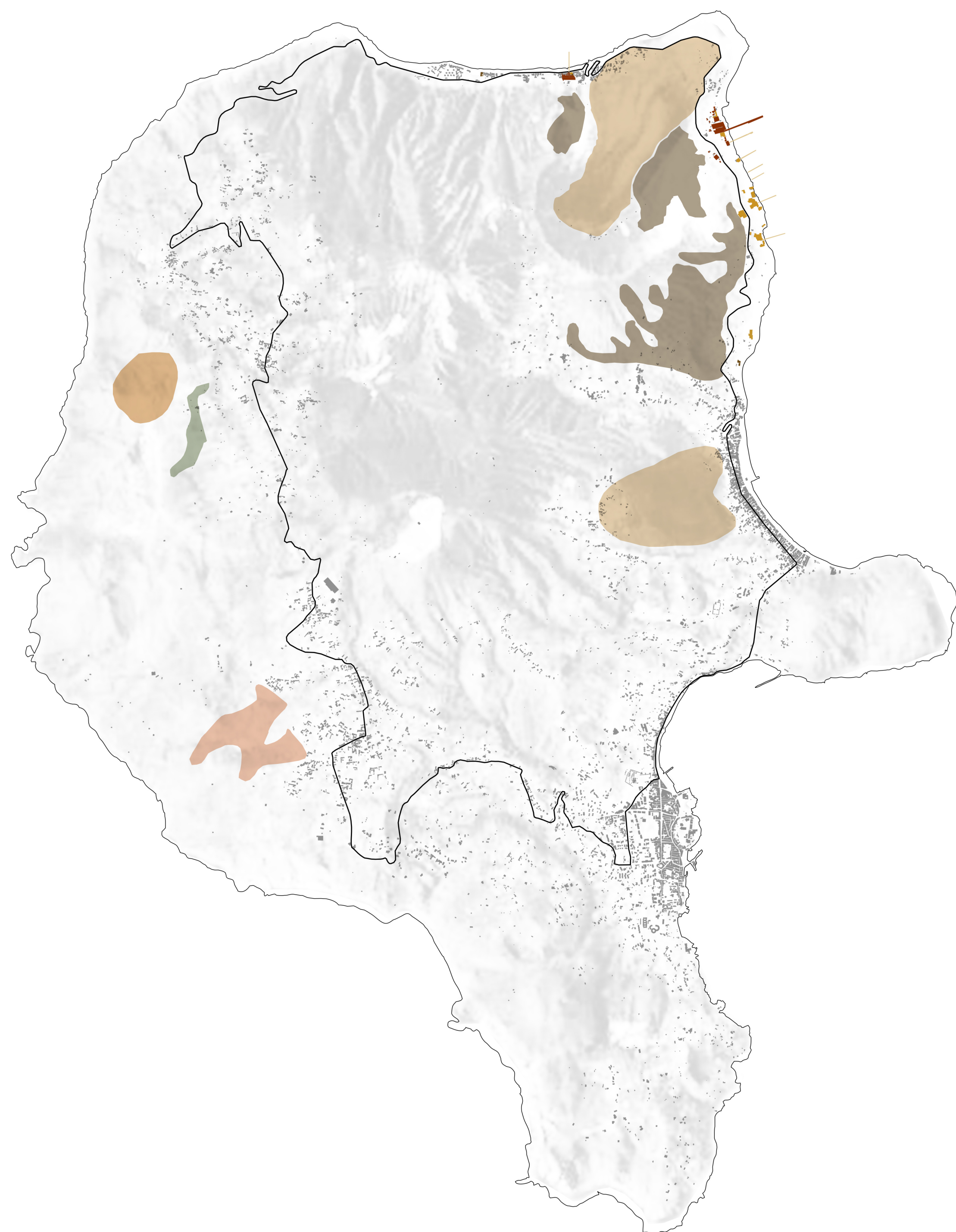


SOURCES

1. Luigi Bernabo Brea, *Le Isole Eolie dal tardo antico ai normanni*, Mario Lapucci Edizione del Girasole, Ravenna 1988
2. Giuseppe Iacolino: *Acquacalda di Lipari*, G. Iacolino Editore, Lipari, 2003.
3. Giuseppe la Greca: *La storia della pomice di Lipari*. Volume VIII, Centro Studi Eoliano, Lipari, edizione 2008
4. *L'Isola Della Pomice- Le vie D'Italia-T.C.I.* - Agosto 1922 di Bonardi Italo
5. <https://www.youtube.com/watch?v=MAGhPZ99RM>
6. <https://www.youtube.com/watch?v=DzYsESosKIY>
7. <https://www.youtube.com/watch?v=DzYsESosKIY>
8. <https://www.youtube.com/watch?v=hhNn7DSNoBw>
9. <https://www.youtube.com/watch?v=WbHMq7Rb34E>

MINING ACTIVITIES OF LIPARI 1:25000



6000 B.C VI Millenium BC 1500 BC IV Century BC Middle Ages 1860 1972 2007

- Pumice
- Obsidian
- Flint
- Gypsum (Kaolin Quarry)
- Gypsum (Faurdo Valley)

HISTORICAL DEVELOPEMENT OF LIPARI 1:25000

FUNCTIONS

- Historical urban nucleus
- Archaeological areas
- Storage of Old Ships
- Shipwreck
- Thermal Bath
- Mining Tunnels
- ▲ Rural settlements

HISTORICAL AGES

- Neolithic age
- Greek age
- Roman age
- Byzantine age
- Medieval age
- Fascist age

SYSTEM OF PUMICE INDUSTRY

- Pumice Buildings until 1929
- Pumice Buildings until 1968
- Pumice Buildings until 1995
- Demolished Docks of Pumice

