

# HISTORY OF SHRINE EXPANSION



**ABBASID CALIPHATE**  
Imam Reza dead & buried in Humayd ibn Qahtaba garden.

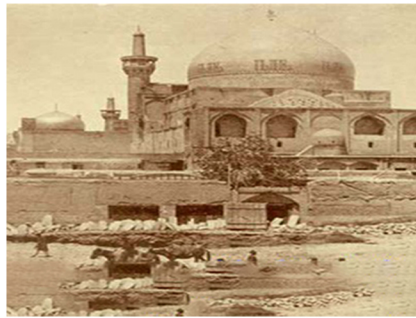
**DAYLAMITES**  
Start to decorated the tomb & built houses surround tomb.



**GHAZNAVIDS**  
Mahmud repaired the tomb & built Balasar mosque.



**SELJUK PERIOD:**  
King Sanjar built shrine & dome also decorate it with Mogharnas & mirrors.



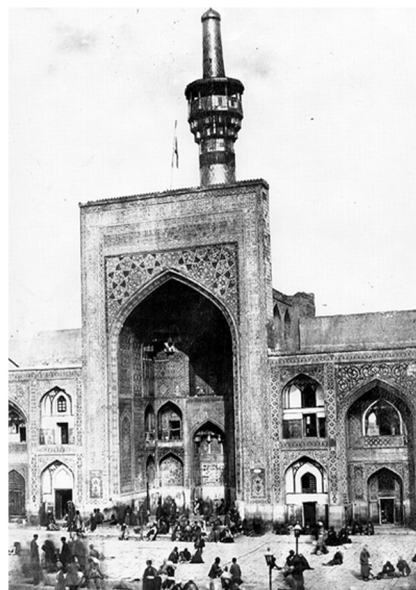
**ILKHANATE:**  
Renovated holy shrine on grande scale.



**TIMURIAN PERIOD:**  
Mashhad became main city of real.Timurid funded construction of Goharshad mosque.



**SAFAVI ERA:**  
precious tiles covering the dome were changed into gold-coated bricks



**AFSHAR ERA:**  
The golden porch of Sahn Atiq were repaired and gilded. Sangolmaded in Ismail Tale'ee Saqqa Khanah was built in Sahn Atiq.



**QAJAR ERA:**  
Established new court yard & gilding it's porch.

**PAHLAVI ERA:**  
Divided city to 2 parts: east (Razavi):Religious west (Pahlavi):Modern

**AFTER REVOLUTION:**  
Expanded shrine to 70 hectors.

