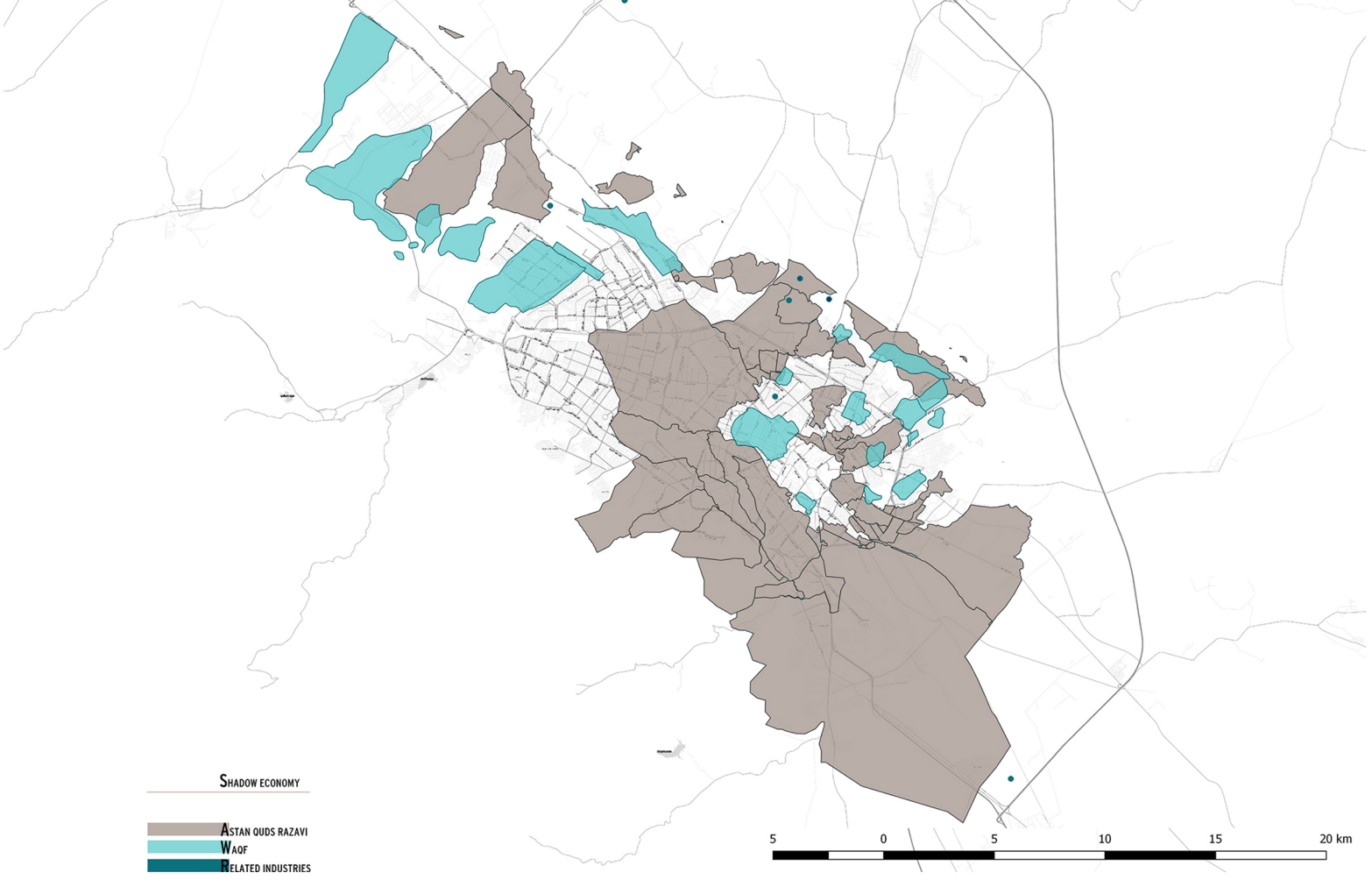
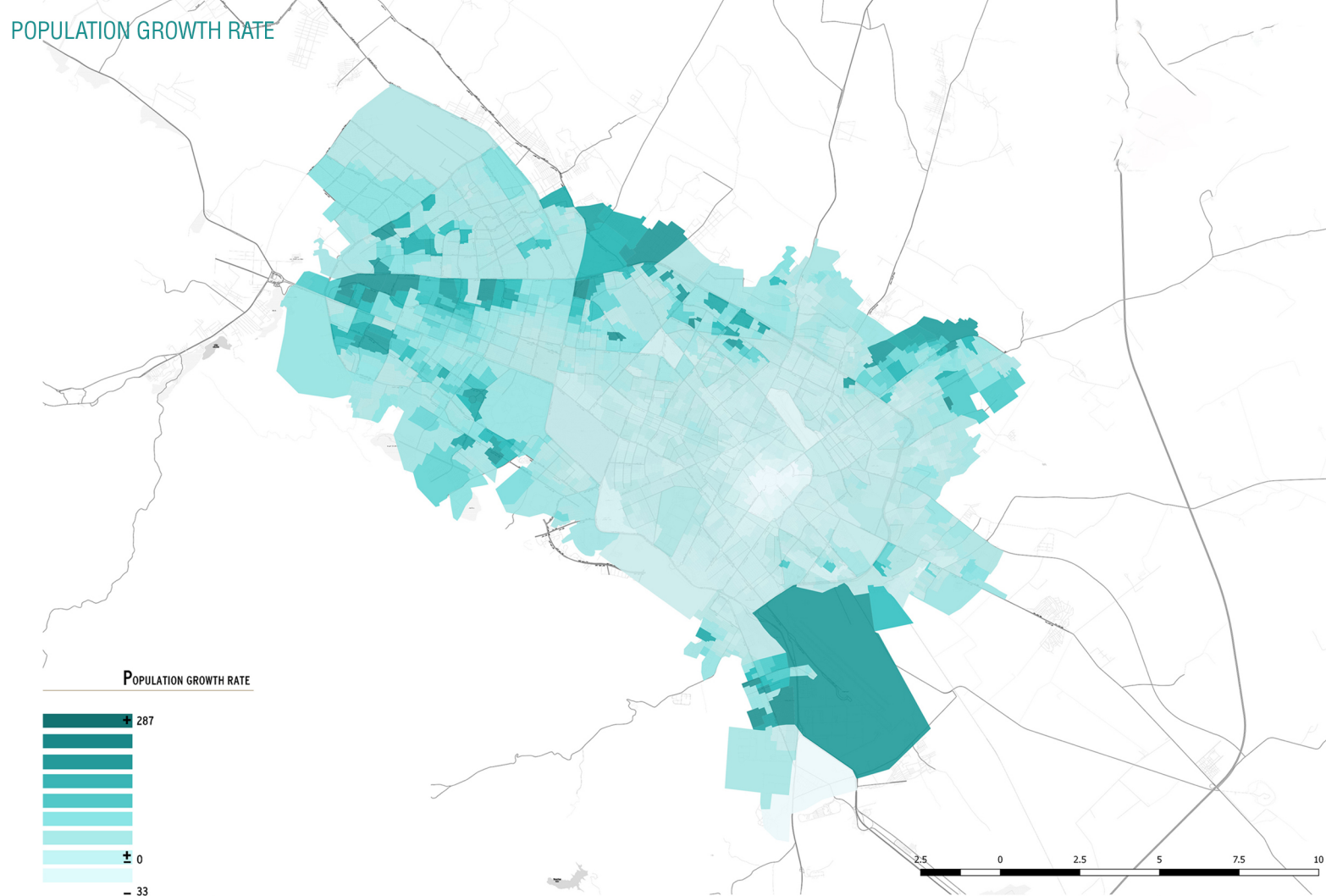


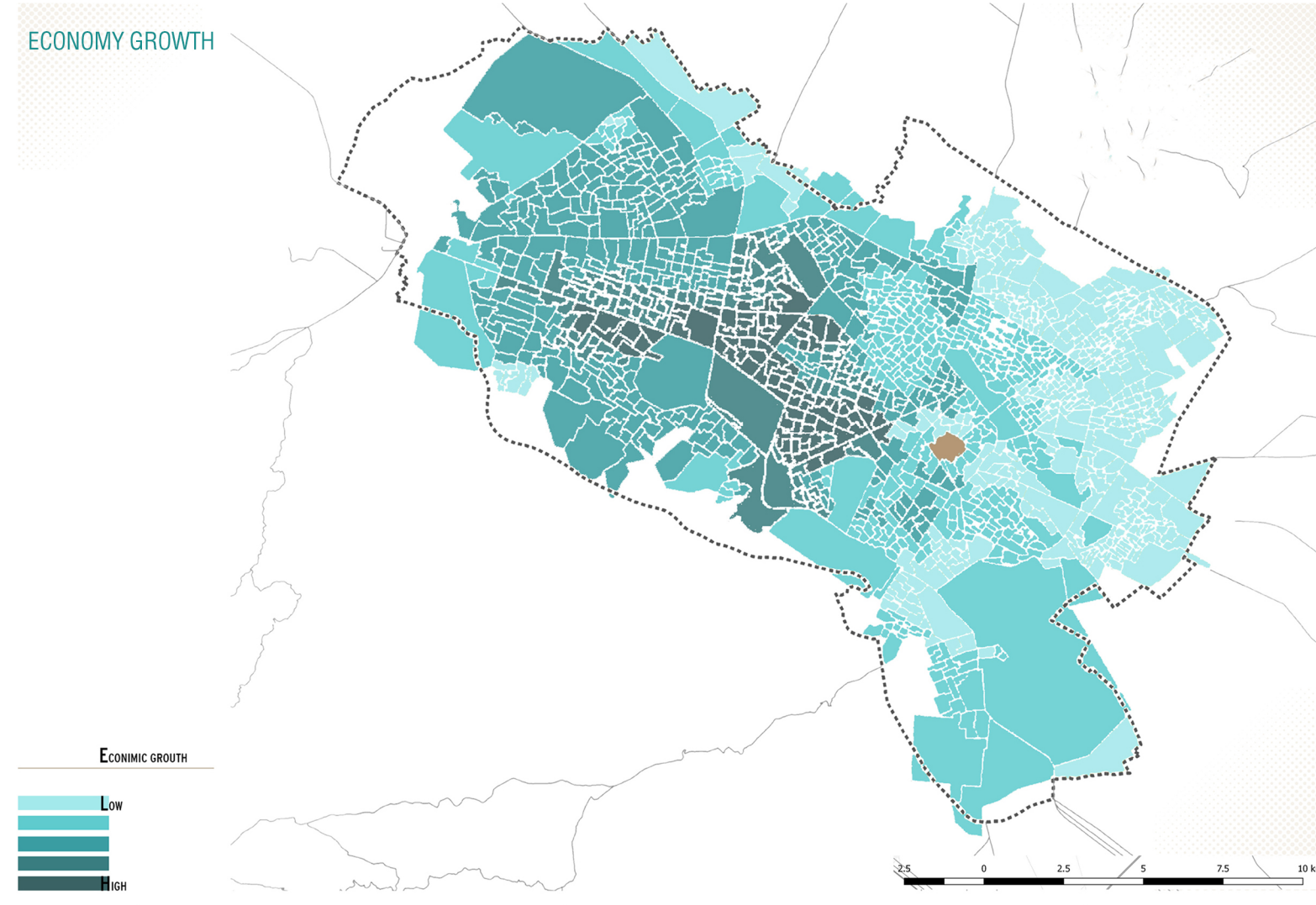
MASHHAD
ECONOMY
POPULATION
TOURIST ATTRACTION



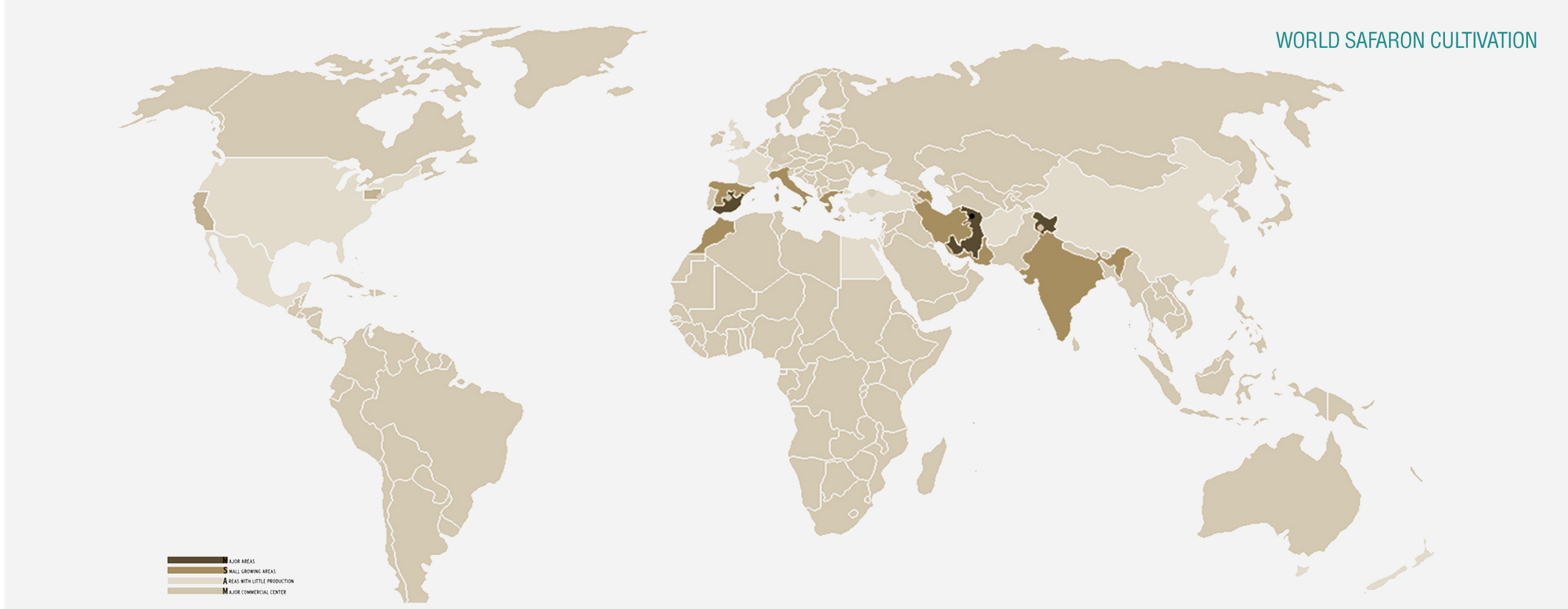
MOST OF THE LAND ARE THE PROPERTY OF ASTAN GHODS SO MASHHAD CITIZENS HAVE TO RENT THE LAND FROM ASTAN GHODS RAZAVI.



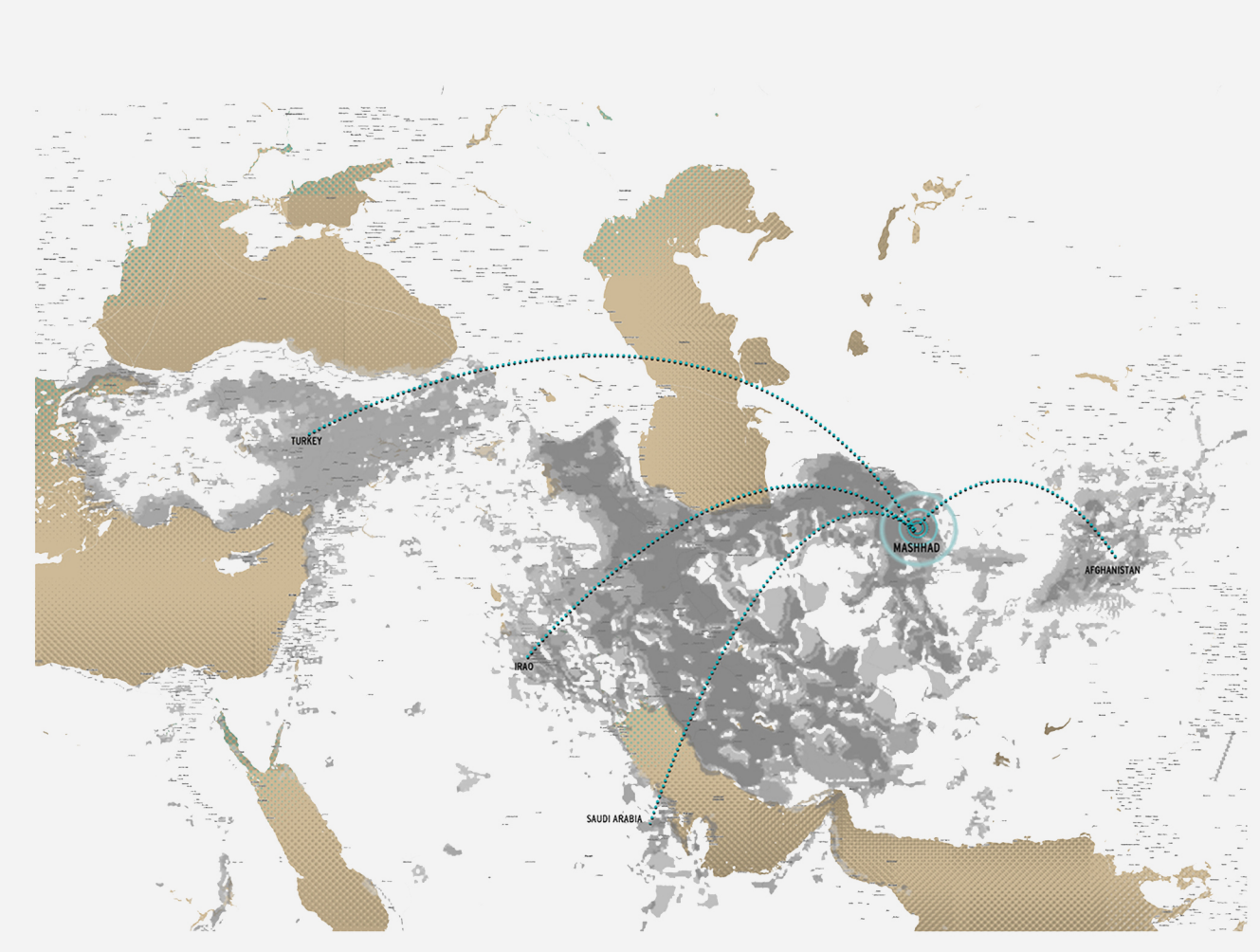
COMPARING POPULATION GROWTH MAP & ECONOMIC GROWTH MAP SHOWS THAT THESE TWO HAVE OPPOSITE RELATION WITH EACH OTHER.



THIS SHOWS THAT IN THE CITY CENTER THAT POPULATION GROWTH IS NEGATIVE, ECONOMY GROWTH IS SIGNIFICANT.

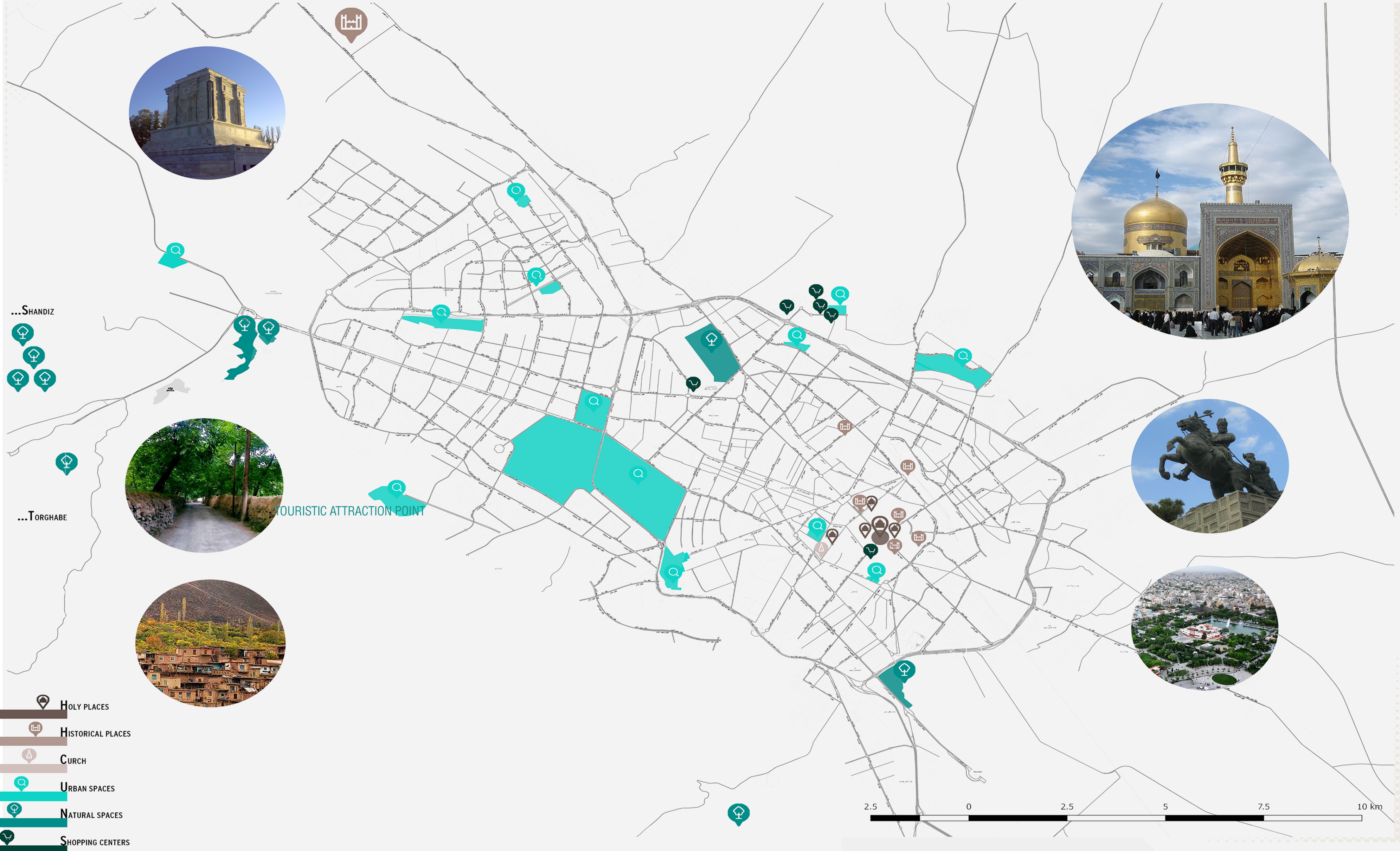


WORLD SAFARON CULTIVATION



RELIGIOUS TOURISM DIVERSITY

MASHHAD IS SHEA S CAPITAL - SECOND RELIGIOUS TOURISTIC CITY. LONG A CENTER OF SECULAR AND RELIGIOUS LEARNING, MASHHAD HAS BEEN A CENTER FOR THE ISLAMIC ARTS AND SCIENCES



- HOLY PLACES
- HISTORICAL PLACES
- CURCH
- URBAN SPACES
- NATURAL SPACES
- SHOPPING CENTERS

