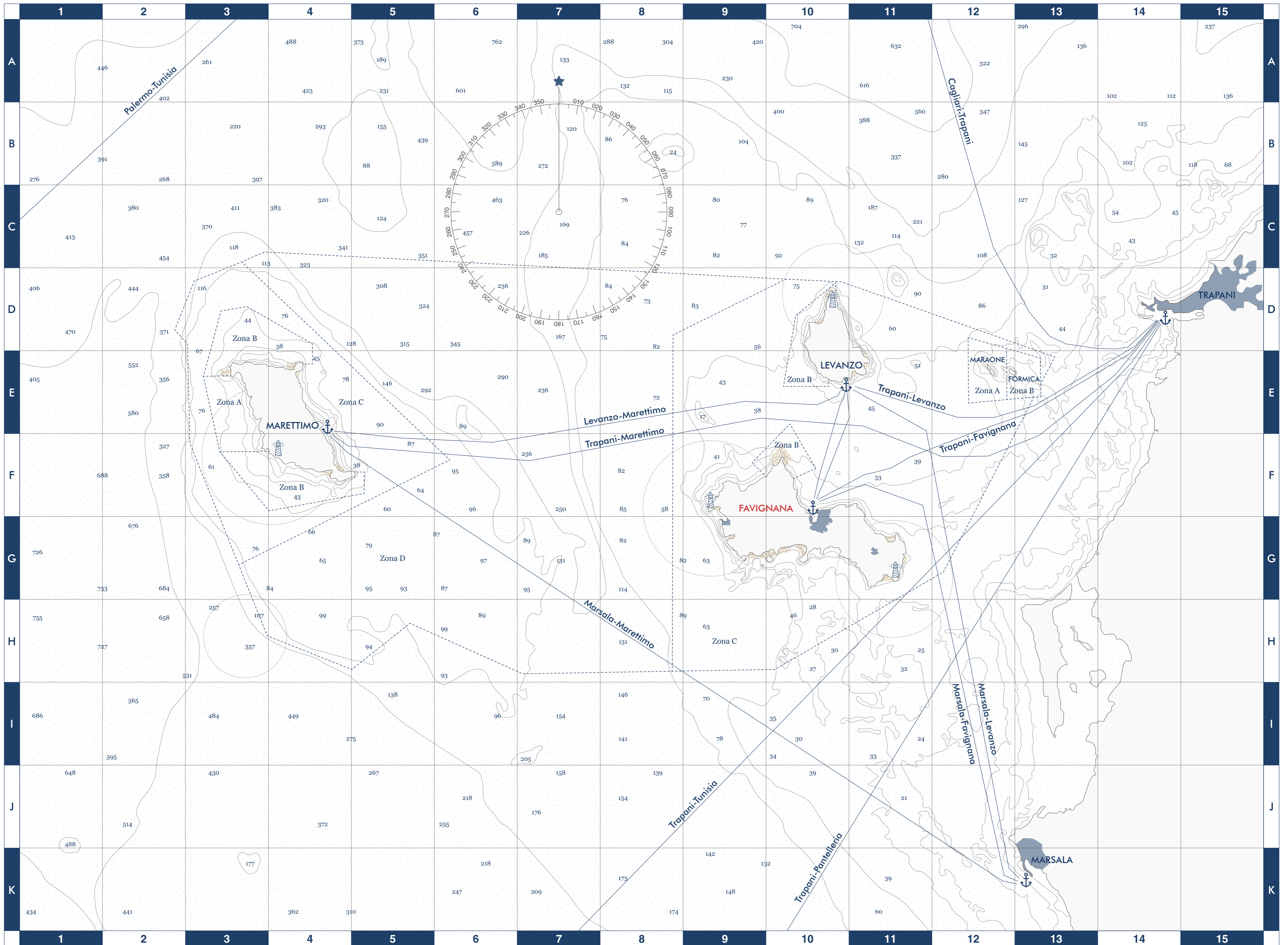


LE ROTTE



LEGENDA

- Isola
- Centro abitato
- ⚓ Porto
- 🗼 Faro
- 🏖️ Area balneare
- Rotta
- Area marina protetta

LOCALIZZAZIONE

Arcipelago delle Egadi

NOME

Isola di Favignana

COORDINATE

37°55'46"N  
12°19'30"E

SUPERFICIE

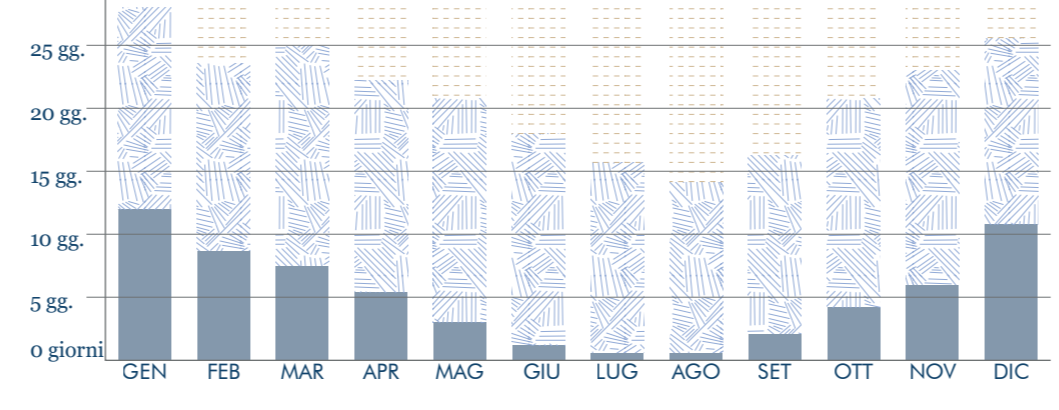
19,38 kmq

ABITANTI

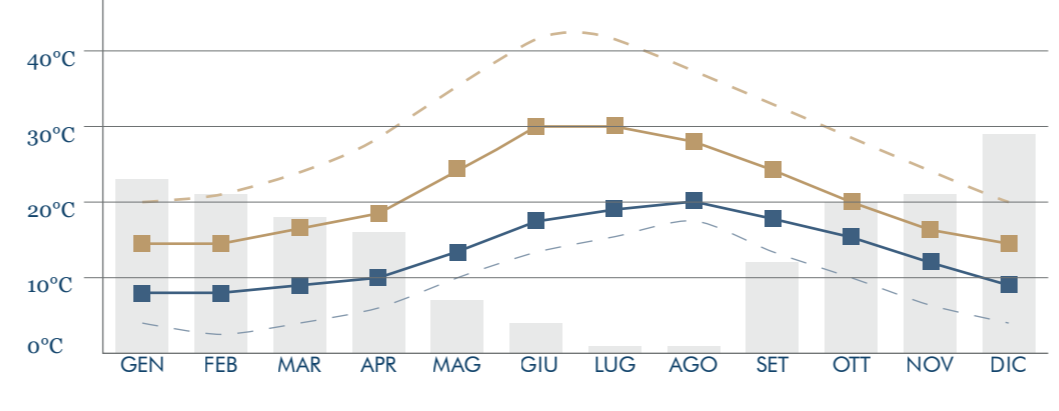
4.351 (ISTAT 2017)



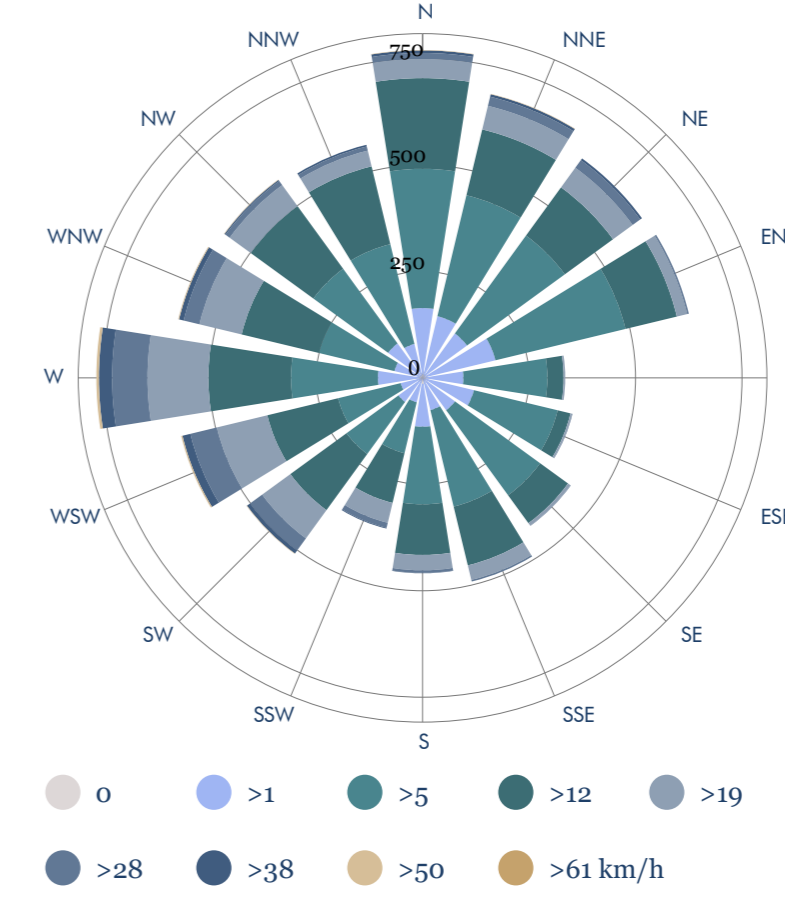
SOLEGGIAMENTO



TEMPERATURE E PRECIPITAZIONI MEDIE ANNUE



ROSA DEI VENTI



FLUSSI TURISTICI

