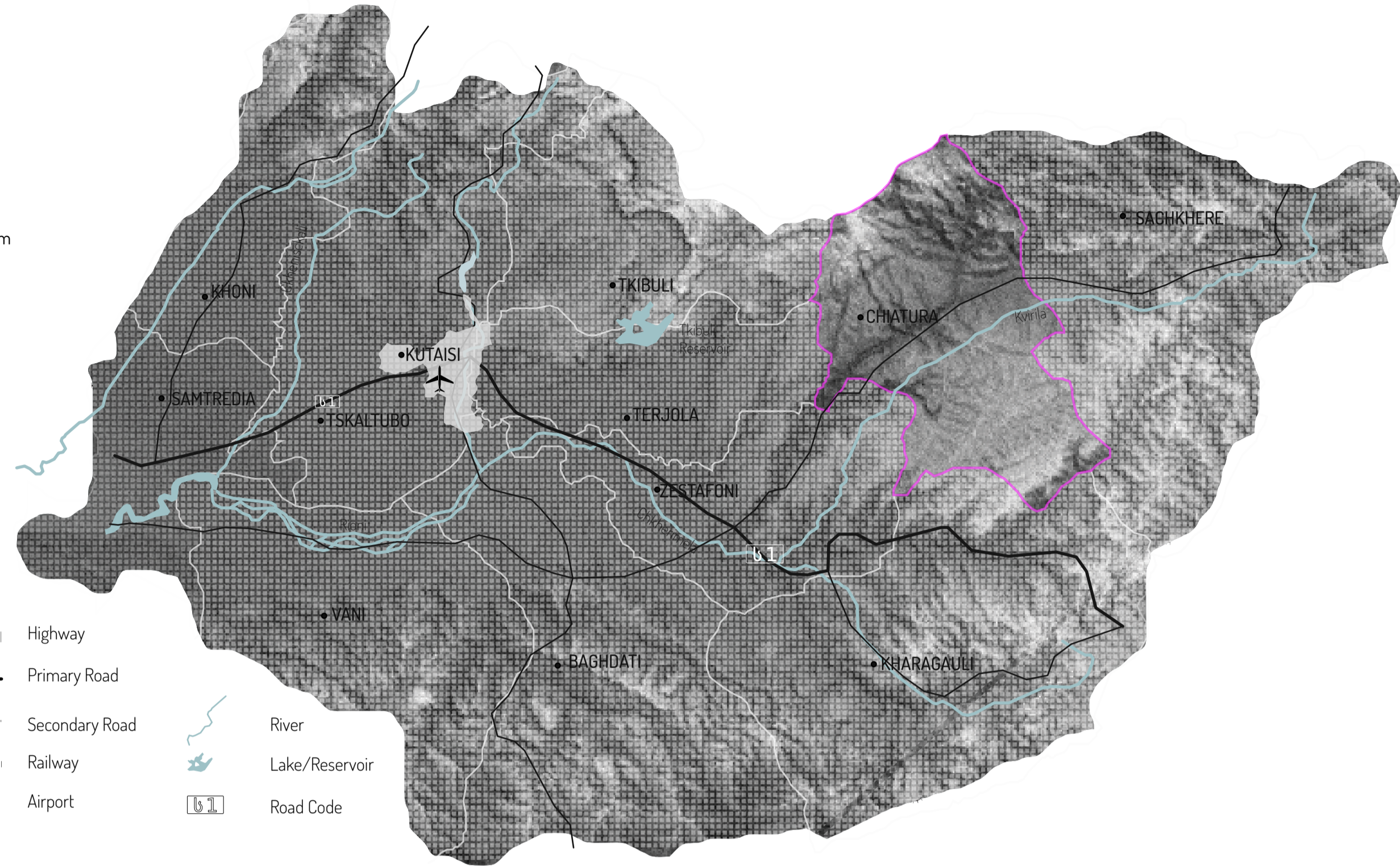


IMERETI REGION
Scale 1:500 000

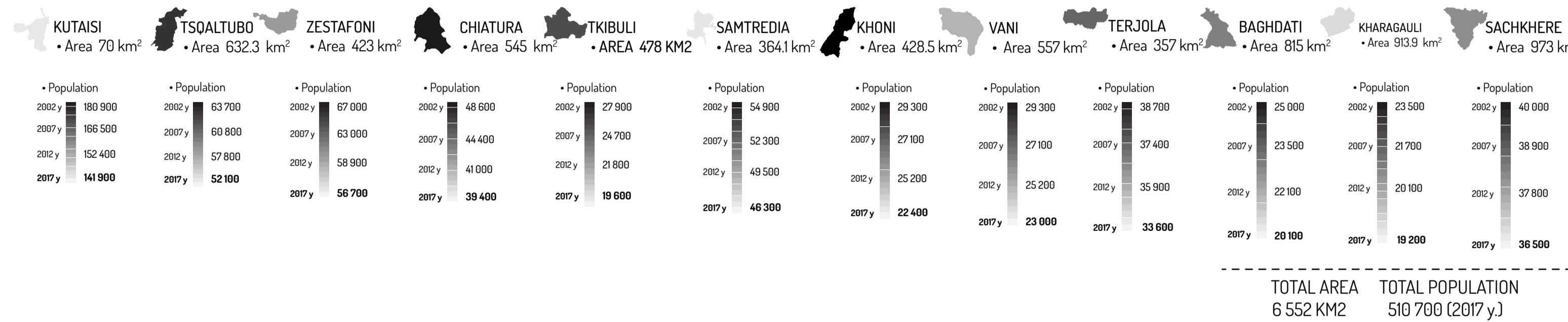
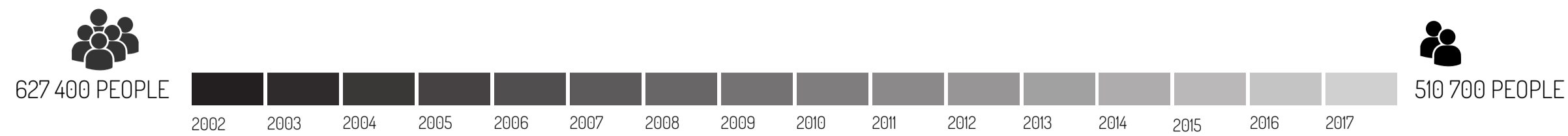
Imereti
Population - 510 700 (2017y)
Area - 11 379 km²
Administrative Center - Kutaisi,
where Georgian Parliament is located
Municipalities - 12
Communities - 161
Villages - 544
Its area makes up 19,4% of Georgia's territory.
Distance up to the capital of Georgia - Tbilisi: 221km
Nearest sea port (Poti): 102km
Nearest Airport (Kopitnari): 20km
Number of administrative units: 12



- Highway
- Primary Road
- Secondary Road
- Railway
- Airport
- River
- Lake/Reservoir
- Road Code

MIGRATION PROFILE OF GEORGIA, 2017 Y.

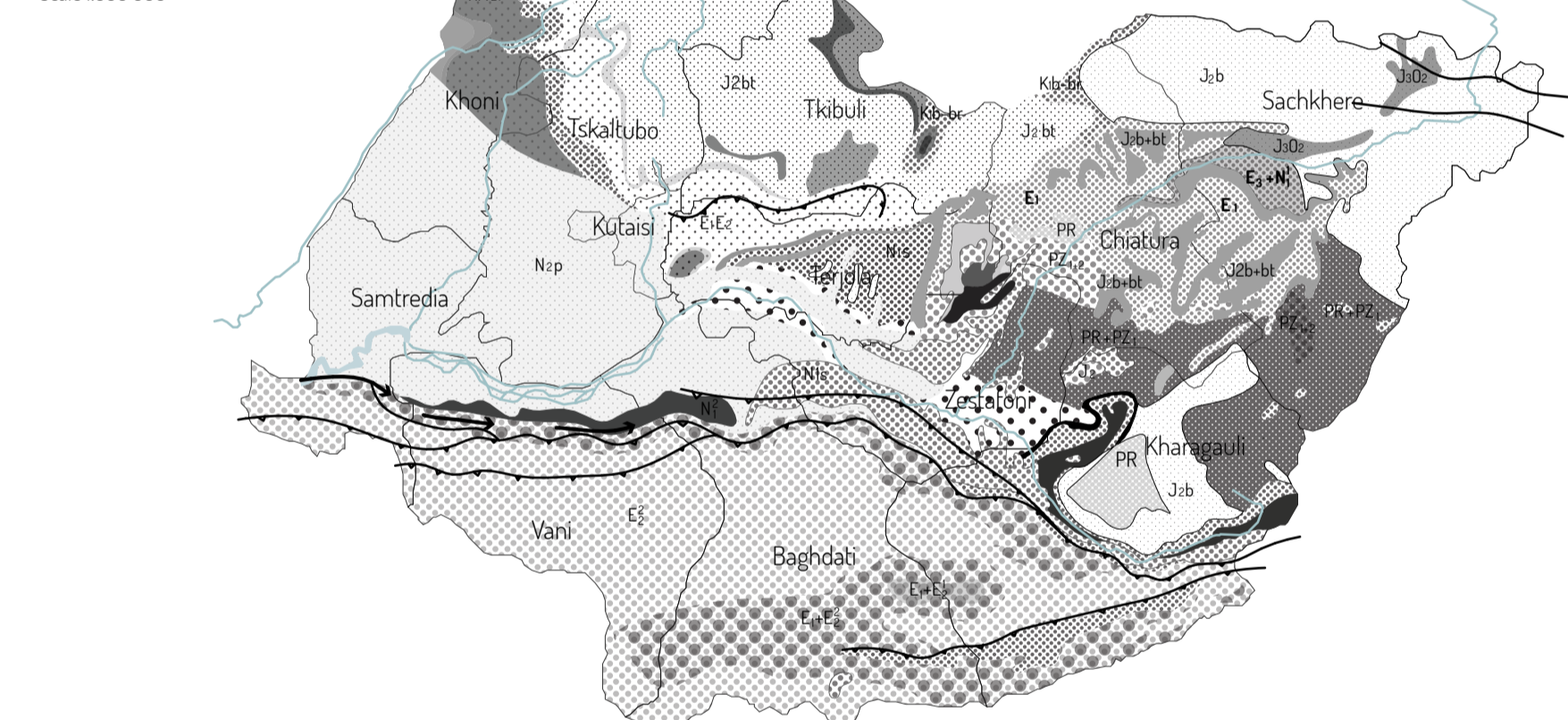
(Source) National Statistics Office of Georgia - GEOSTAT



GEOLOGICAL MAP

(Source) Institute of Earth Sciences and National Seismic Monitoring Centre

Scale 1:800 000



- E₂ Clay -clast Conglomerate, Marbles, Basalt, Sandstone
- E_{1+E2} Pelagic argeles, Marbles, Basalt-clast Conglomerate, Sandstone
- J_{2b+bt} Gravely, Sandy limestone
- E_{1+E2} Alleveolite, Sandstone, Volcanic ash
- N_{2p} Sand, Clay, Sandstone
- K_{b-br} Ammonite limestone
- E₁ Colored marble, Sand, Clay
- N₂₁ Oolitic, limestone, Clay, sandstone
- E_{3+N1} Sandstone, Carbonate clay, Gypsum
- Nappe
- Thrust sheet

MINERAL RESOURCES MAP

(Source) Ministry of Environment and Natural Resources Protection Agency of Protected Areas

Scale 1:800 000



- * Manganese
- * Marble
- * Loose Clay
- * Jet
- + Kaolinite
- + Limestone
- + Baryte
- + Gypsum
- X Coal
- X Sand
- X Diabase
- Wildlife Refuge
- State Reserve
- Nature Monument
- National Park

WATERWAY MAP

(Source) Ministry of Environment and Natural Resources Protection Agency of Protected Areas

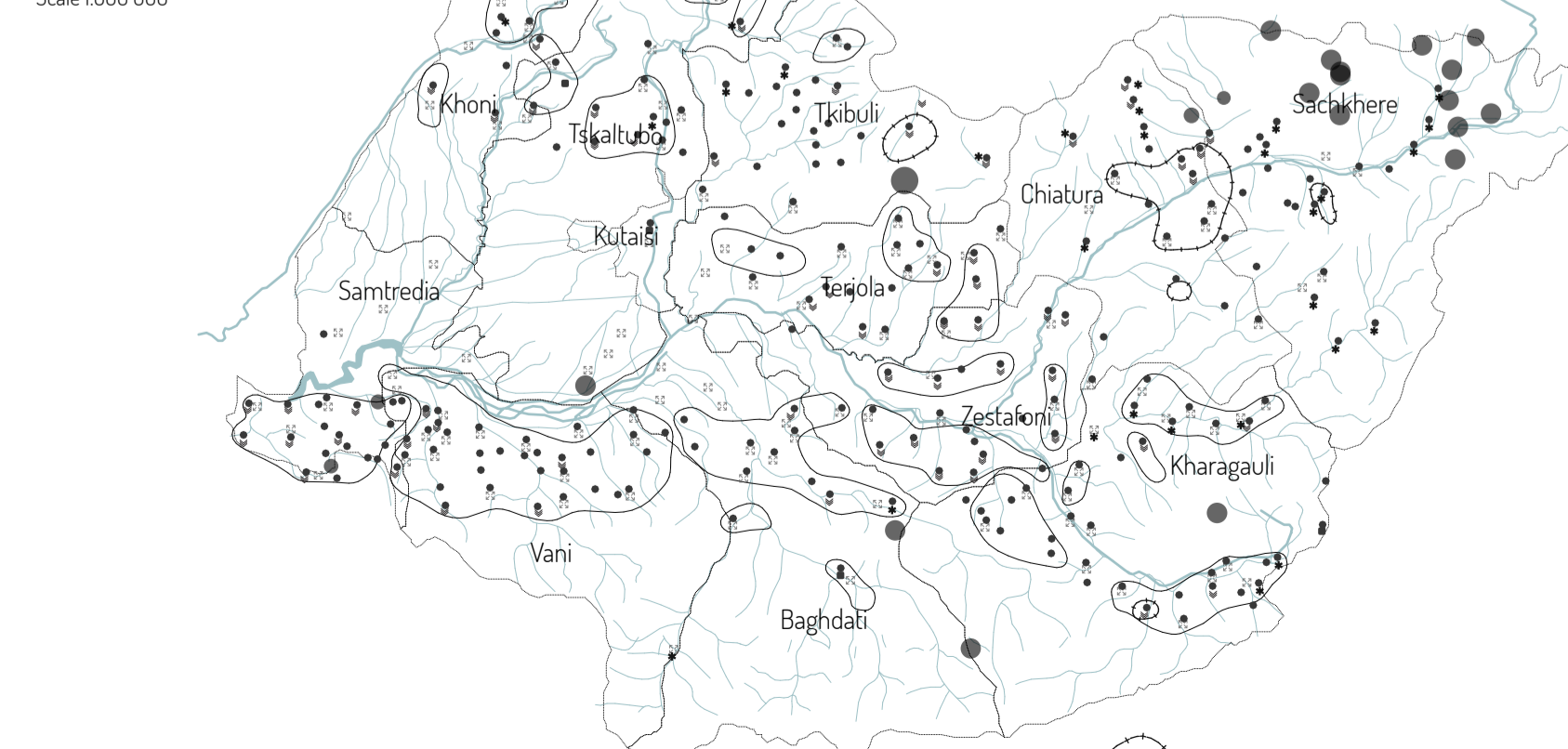
Scale 1:800 000



NATURAL HAZARDS MAP

(Source) National Environmental Agency

Scale 1:800 000



- Earthquake
- Landslide
- ⊠ Flooded River Banks
- Technogenic areas
- * Downpour
- ⊠ Landfill
- Dangerous Zones of Natural Disasters
- Waterstreams

CHIATURA MUNICIPALITY

Scale 1:200 000

