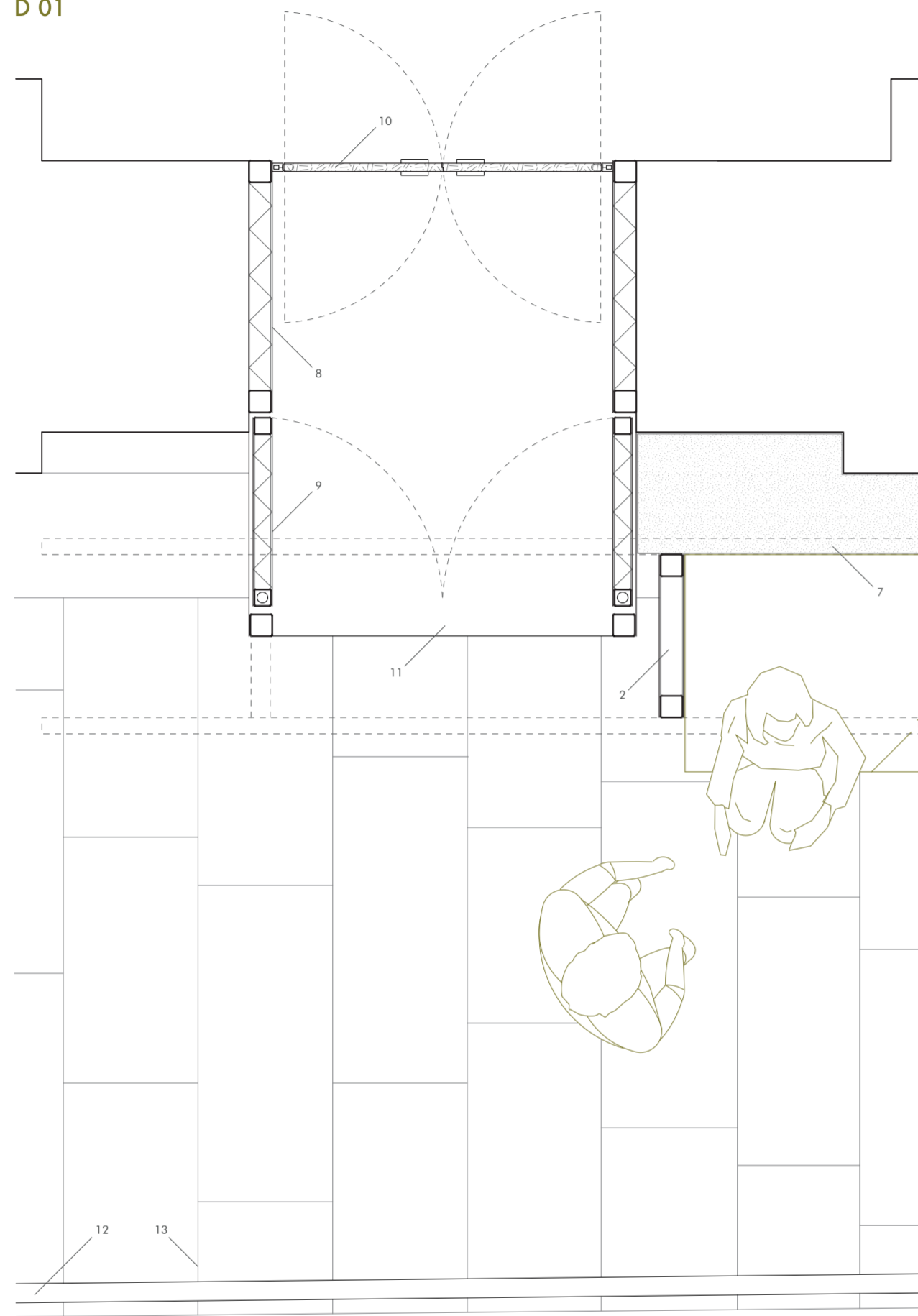
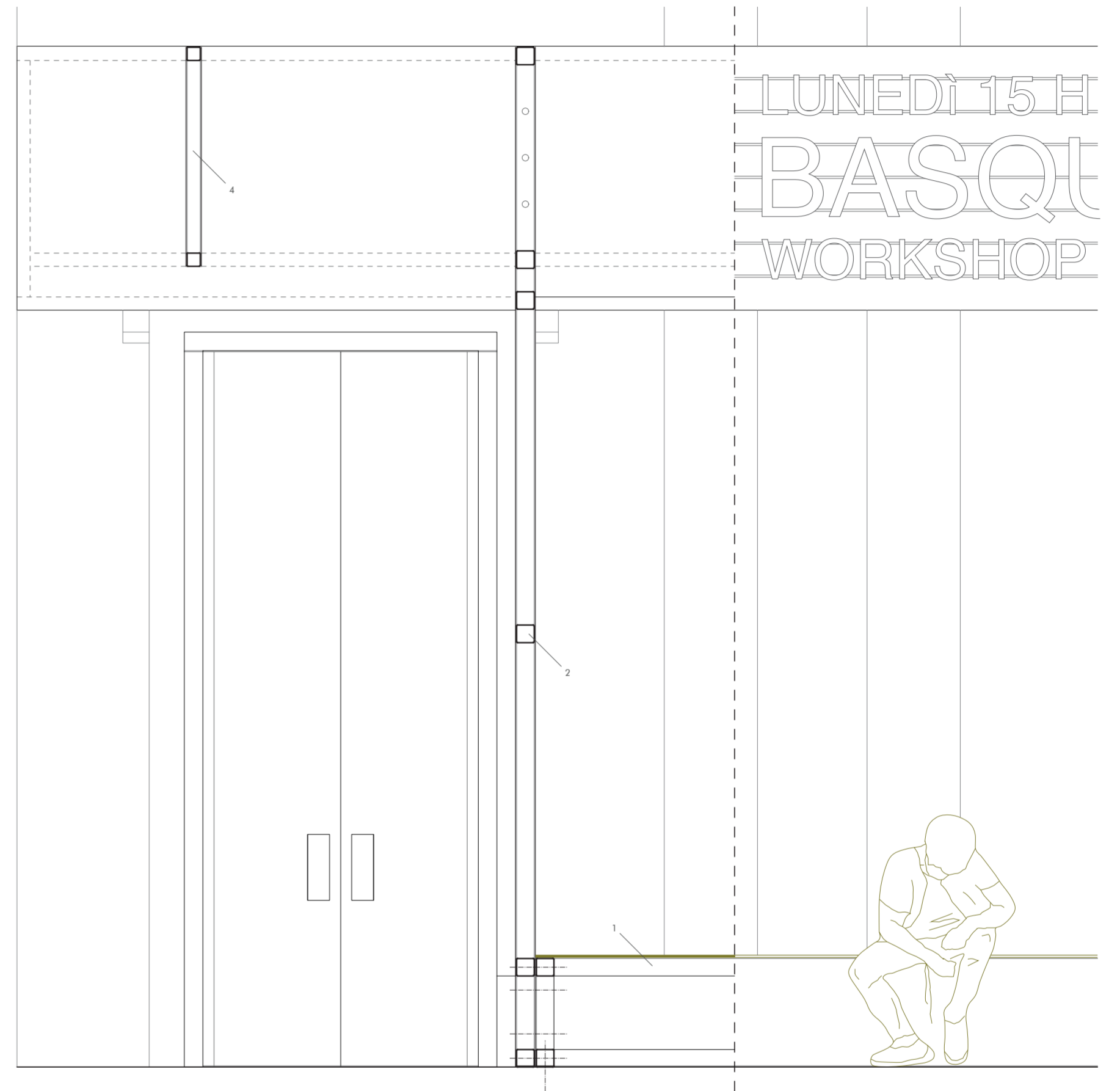
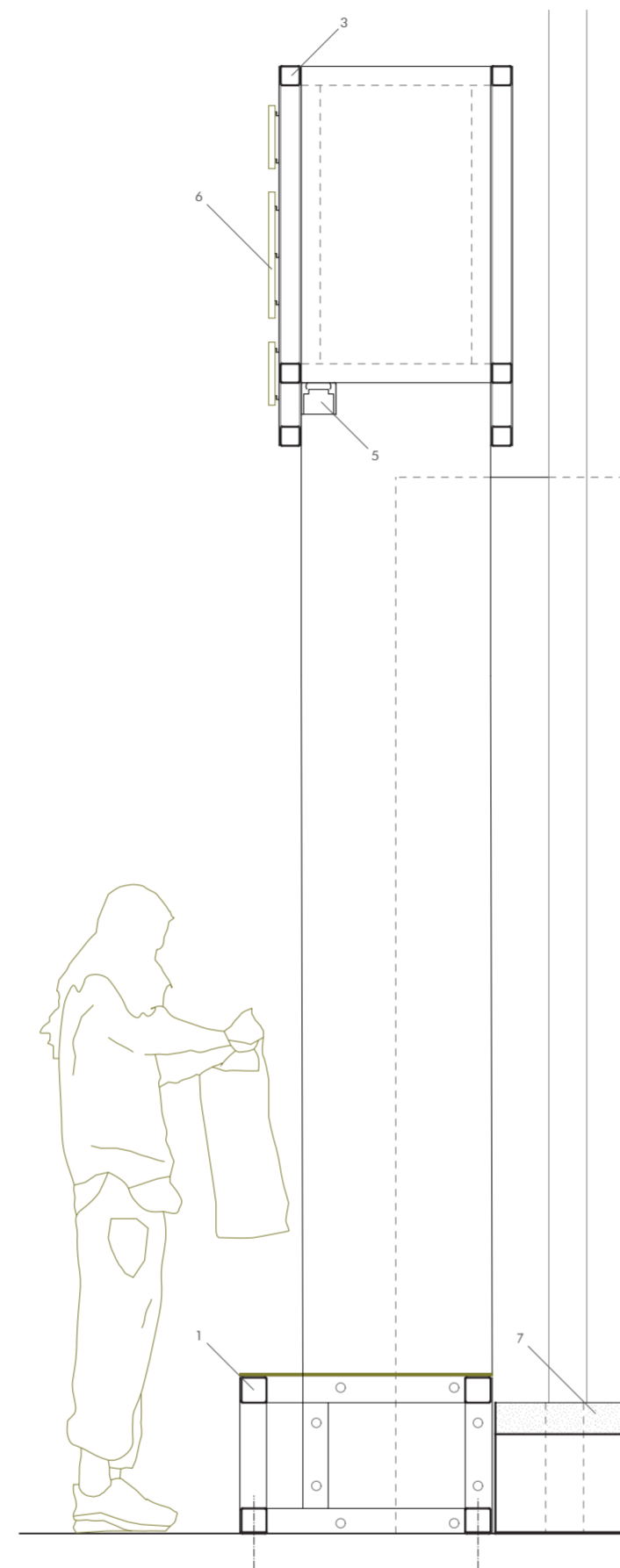


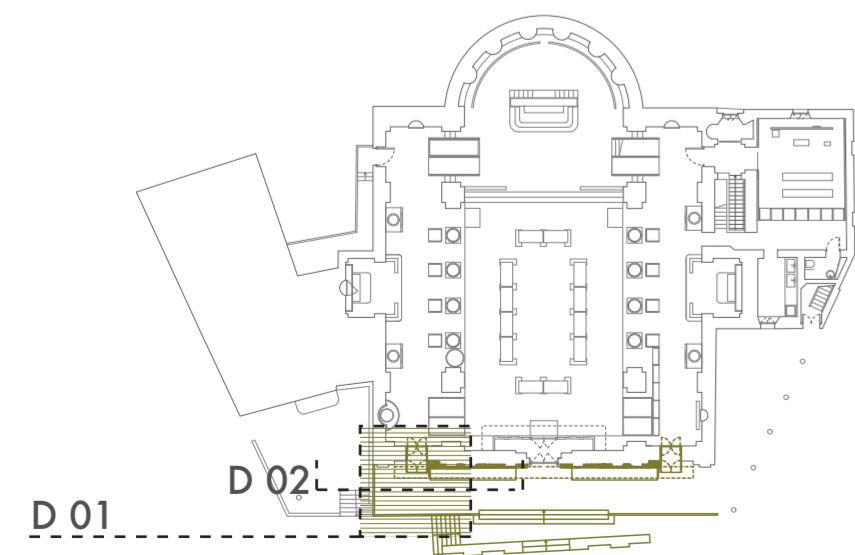
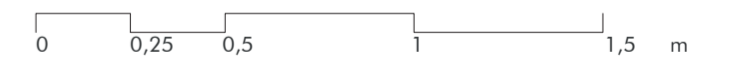
D 01



D 02



scale 1:20



D 01

- 1_ External seat:
Steel frame of square profile 80x80mm, h.480mm
Lateral cladding, metal sheet, black
Upper cladding, metal plate of satin steel th.20mm
- 2_Vertical structure:
Steel frame of square profile 80x80mm
Cladding, metal sheet, black
- 3_Primary horizontal frame:
Steel frame of square profile 60x60mm
Cladding, metal sheet, black
- 4_Secondary horizontal structure:
Steel frame of square profile 60x60mm
Cladding, metal sheet, black
- 5_Lighting system:
Led linear light, warm

- 6_Info panel system:
Letters, plastic, smooth finishing, whitw
Fixing system, aluminium profile U shape, 20x20mm
- 7_Double bottom vase:
Steel sheet, black, th.10mm
Rock pebbles
- 8_Entrance volume:
Steel frame of square profile 80x80mm,1750x3300mm
Cladding, metal sheet, black
Rock wool panel th.80mm
- 9_External entrance door:
Steel frame of square profile 60x60mm,700x3250mm
Cladding, metal sheet, black
Rock wool panel th.60mm

- 10_Internal entrance door:
Double opening hinge
MDF panel th.40mm, smooth finishing, black, 600x3250mm
Handle, MDF panel th.20mm, smooth finishing, black, 100x300mm
- 11_Entrance volume's pavement:
Steel sheet, black, th. 10mm
- 12_Existing parapet
- 13_Existing floor:
Rock tiles, variable dimensions