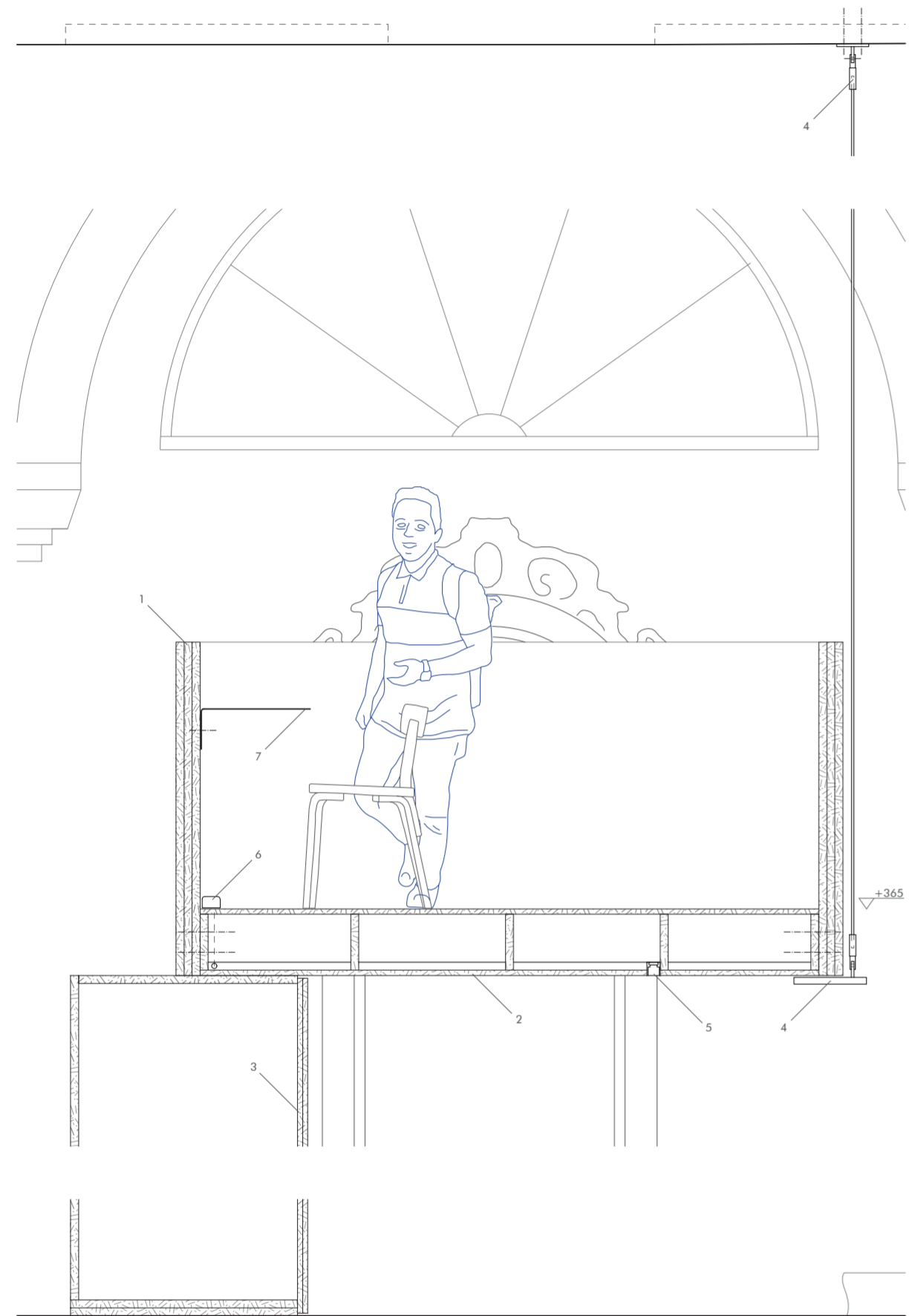
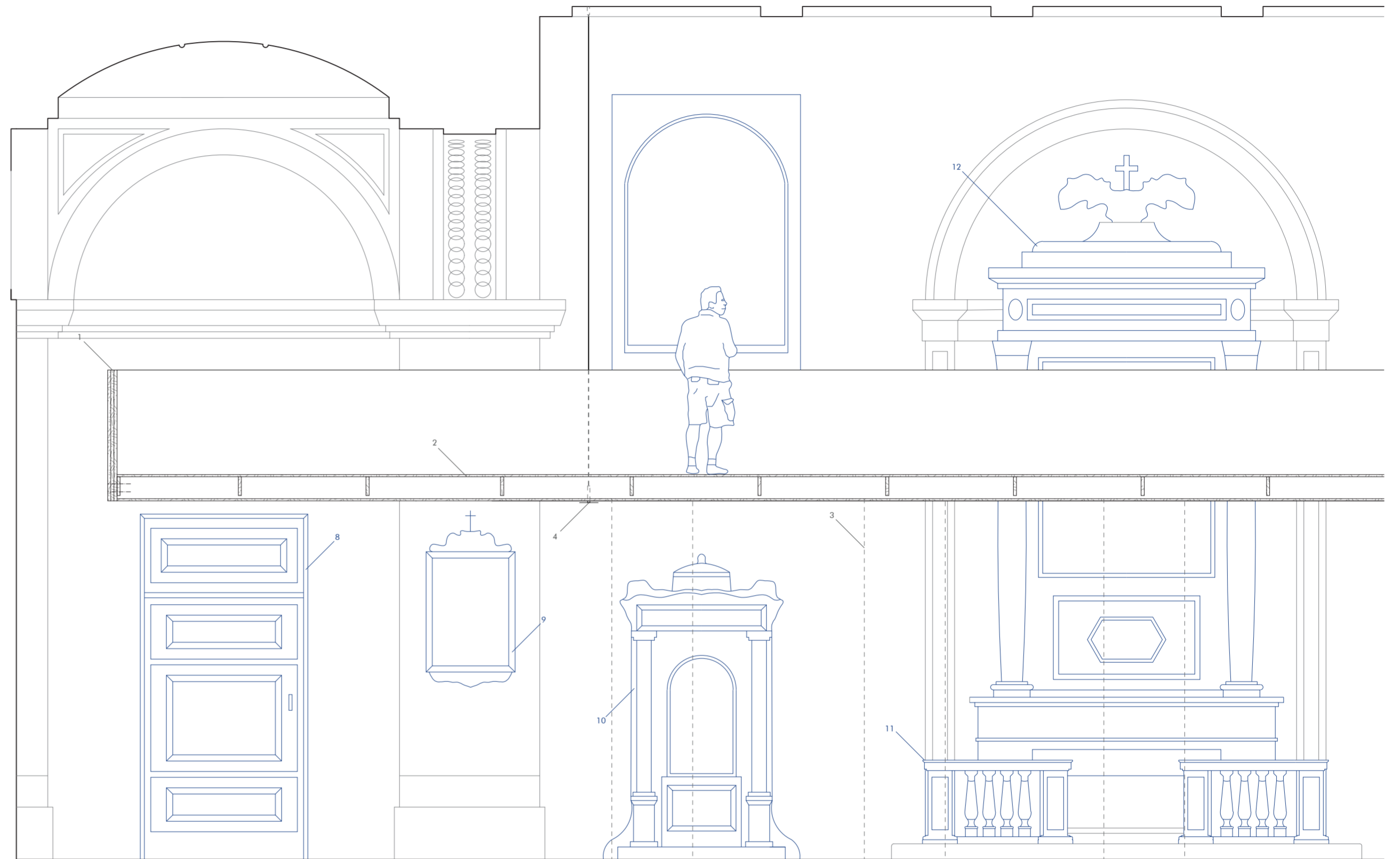


D 04

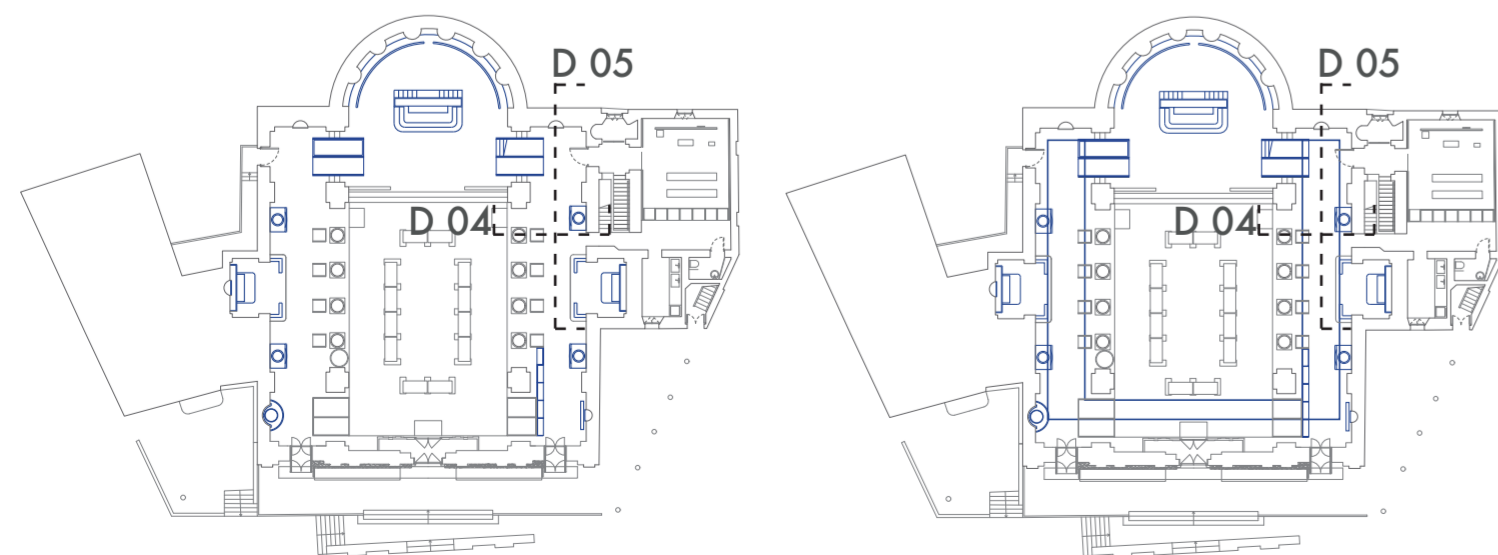


scale 1:20 0 0,25 0,5 1 1,5 m

D 05



scale 1:40 0 0,5 1 2 3 m



- 1 Lateral beam/parapet:
MDF panels th.90mm (30+30+30, glued), smooth finishing, black, 1222m x variable
- 2 Slab:
Coffer structure of MDF panels th.30mm, smooth finishing, black, 200/250mm x variable
Cladding, MDF panels th.20mm, smooth finishing, black, variable dimensions
- 3 Left vertical support:
Closet 900x900x3400mm, made of MDF panels, th.30/20mm, smooth finishing, black
- 4 Right vertical support:
Steel cable and connectors for suspended structure
Steel plate th.20mm, black, 100x300mm

- 5 Lighting system:
Led linear light, warm
- 6 Electrical supply:
Sockets
- 7 Support for additional activities:
Bended steel sheet th.15mm, black, 400x1200x150mm
- 8 Wooden door
- 9 Gian Battista Riva (Bergamo, 1830-1910), way of the cross painting
- 10 Wooden confessional
- 11 Balustrade
- 12 Lateral altar and paintings from Alessandro Bonvicino known as 'il Moretto', Madonna col bambino e i SS Andrea, Domno, Domneone ed Eusebia, 1537.