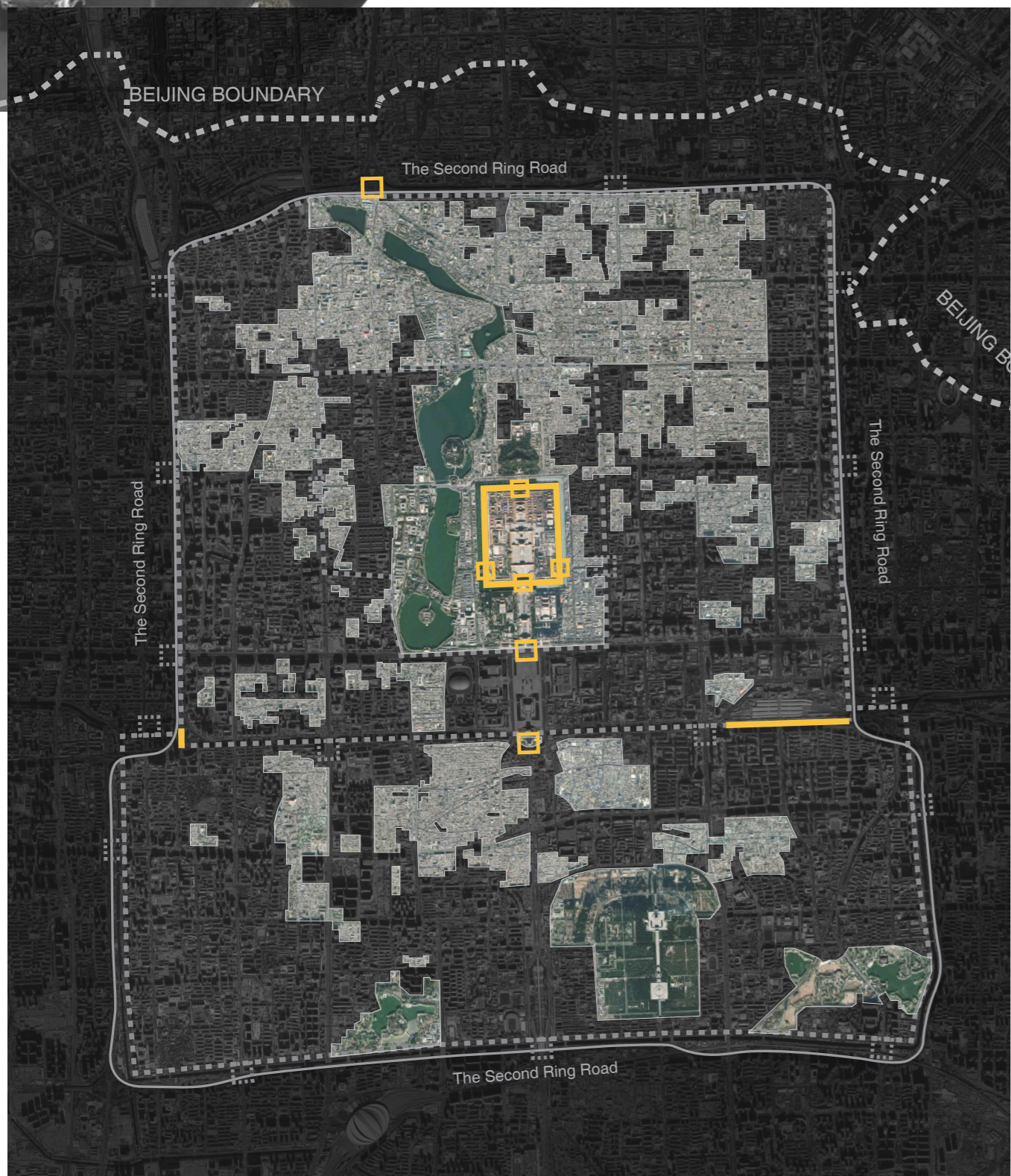


# RING CITY - A REALISTIC UTOPIAN BEIJING

## MACROSCOPIC SOCIAL PROBLEM

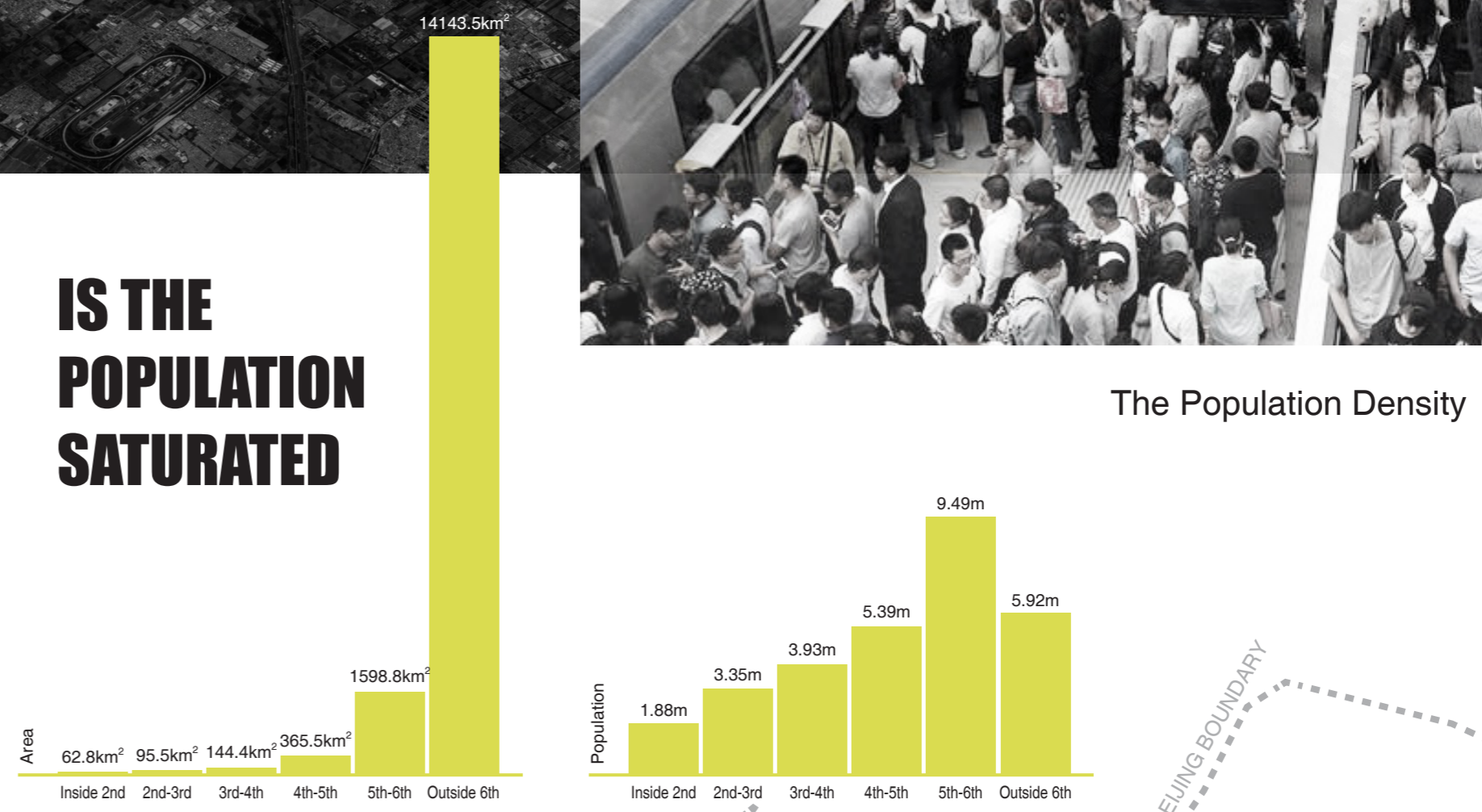


The Remnant of Ancient Beijing

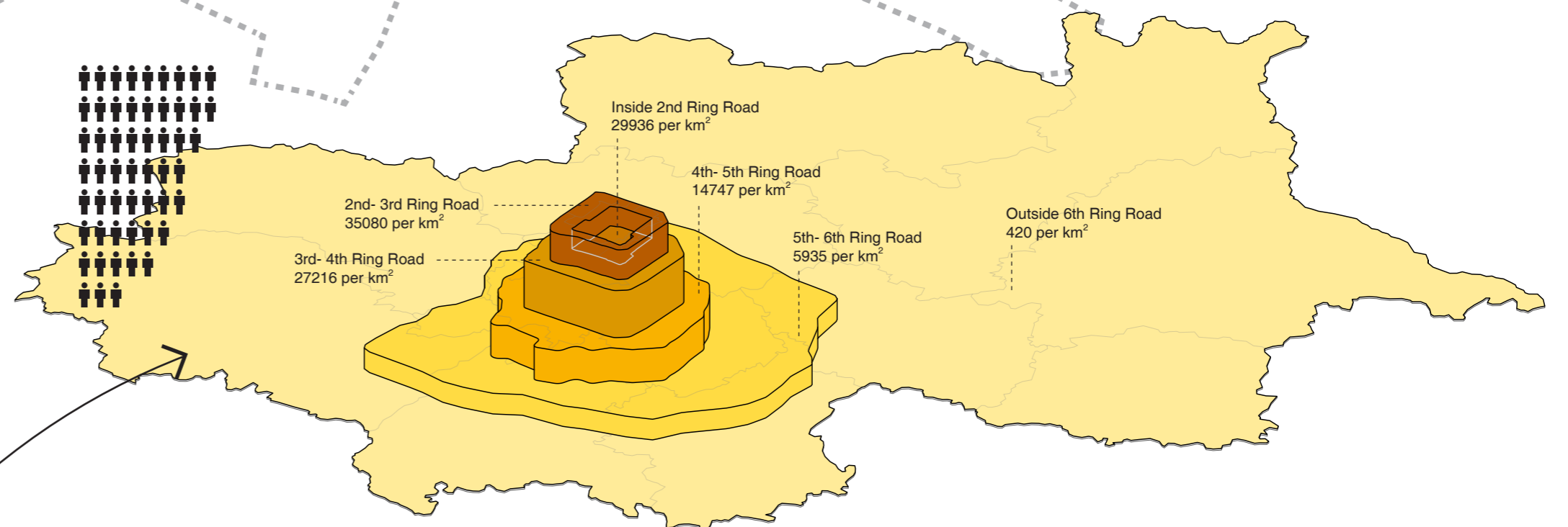
The development of Beijing is partly based on the demolish of ancient city. The process started to accelerated from 1980s, resulting in only scattered ancient blocks remained with nonmatched buildings encircled. In the meantime,



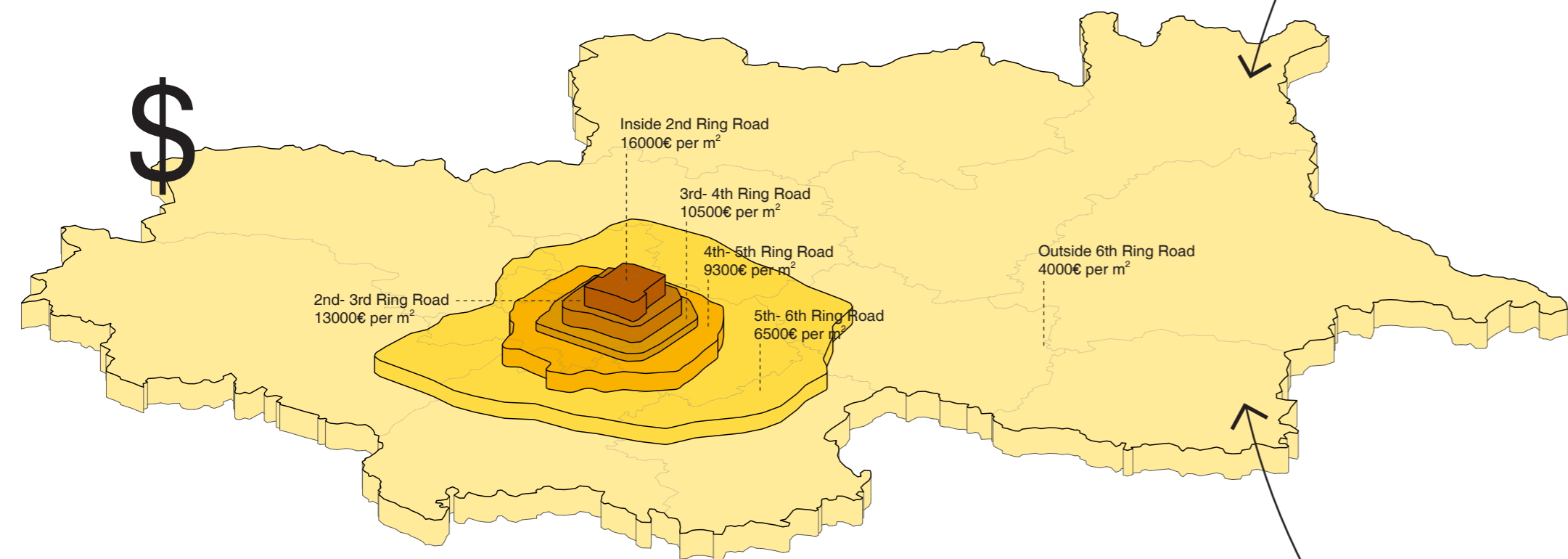
### IS THE POPULATION SATURATED



The Population Density



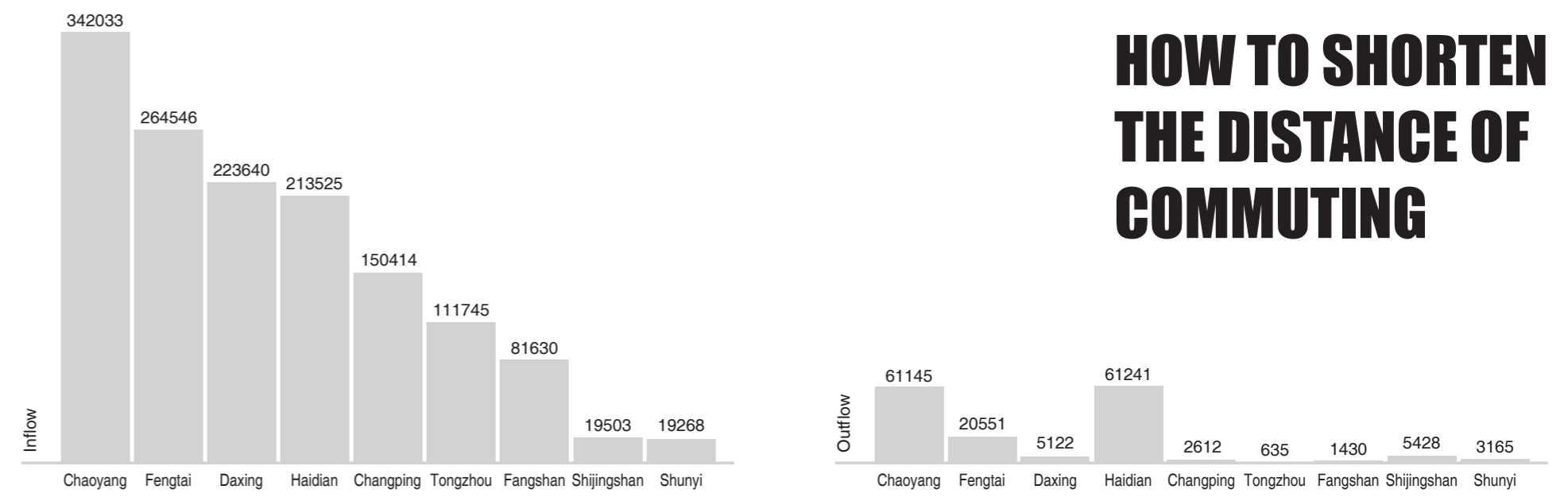
### HOW TO STOP THE EROSION TO THE ANCIENT CITY



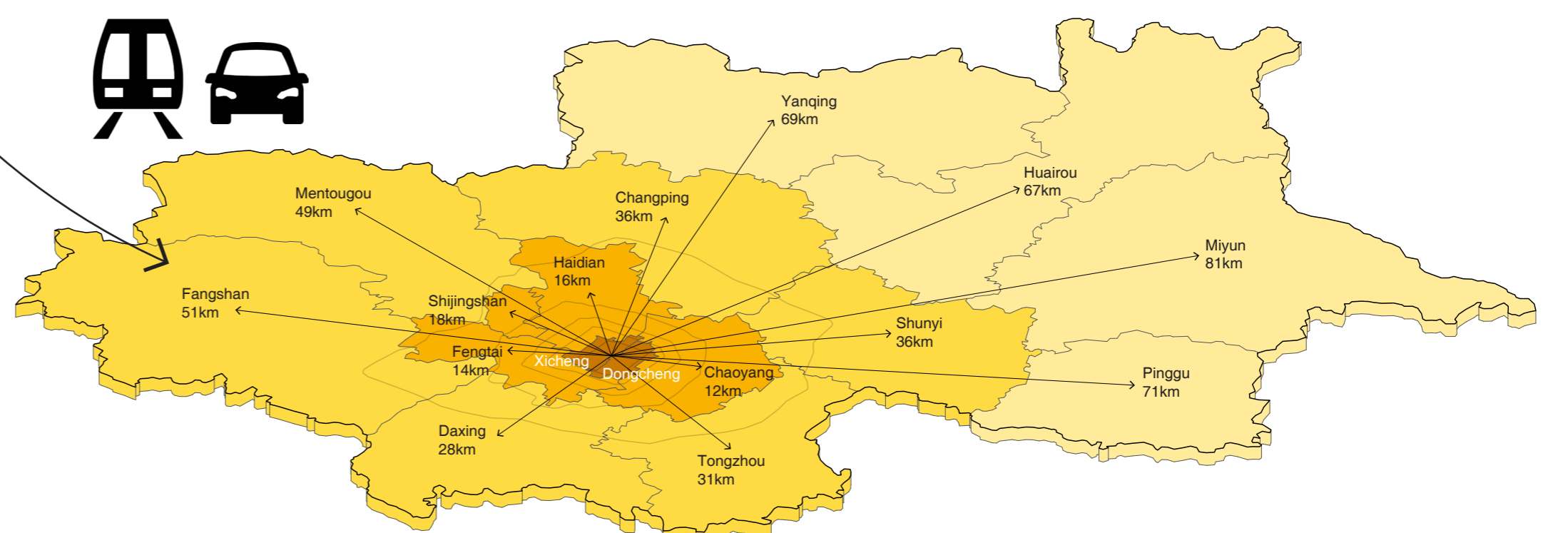
The Housing Price

### HOW TO MAKE THE HOUSING PRICE AFFORDABLE

### HOW TO SHORTEN THE DISTANCE OF COMMUTING



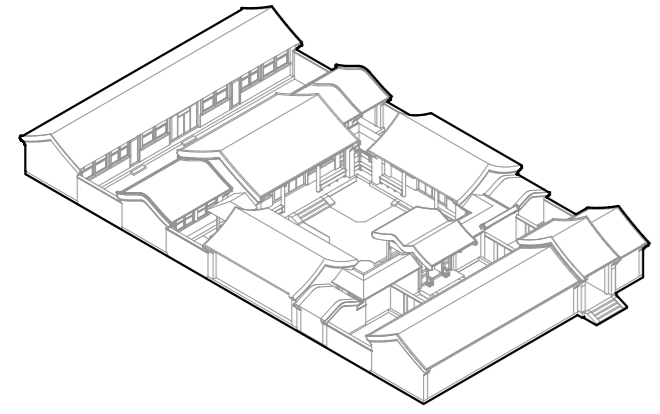
Commuting about Two Central Districts (Dengcheng and Xicheng)



# RING CITY - A REALISTIC UTOPIAN BEIJING

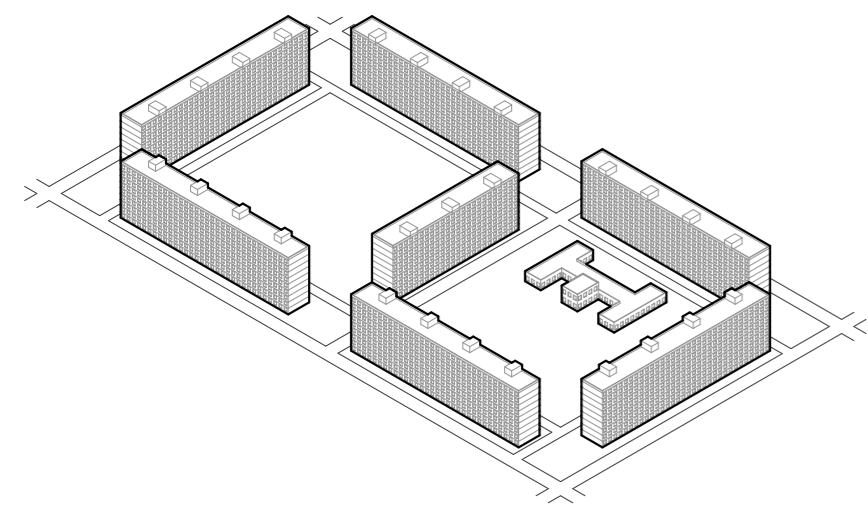
## MESOSCOPIC URBAN PROBLEM — ISOLATED URBAN TEXTURE

Fence City



Traditional Enclosed Thought

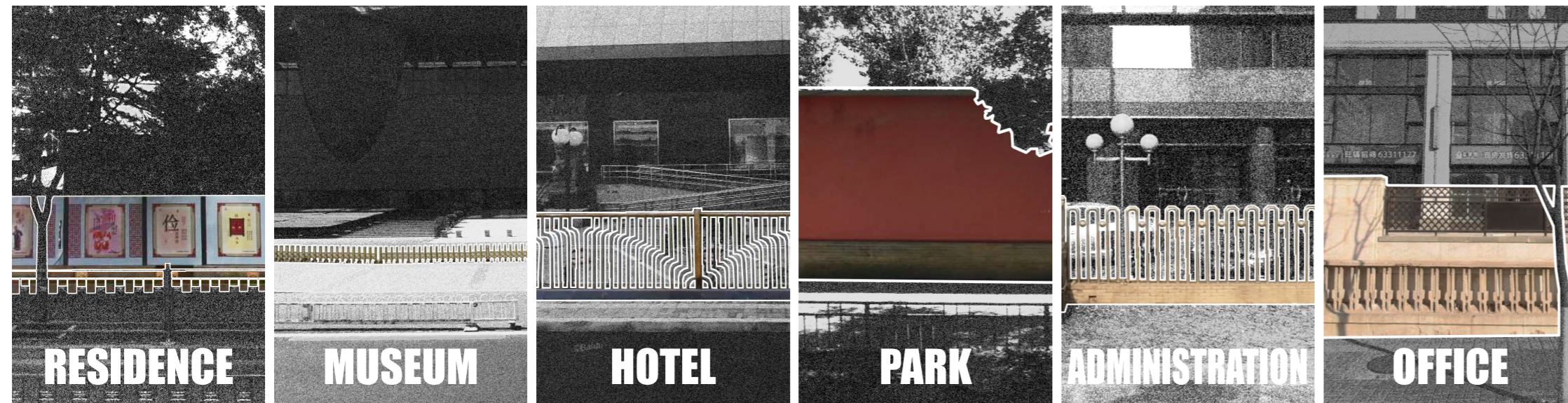
+



Soviet Microdistrict



Various Fences



RESIDENCE

MUSEUM

HOTEL

PARK

ADMINISTRATION

OFFICE

Various Scale

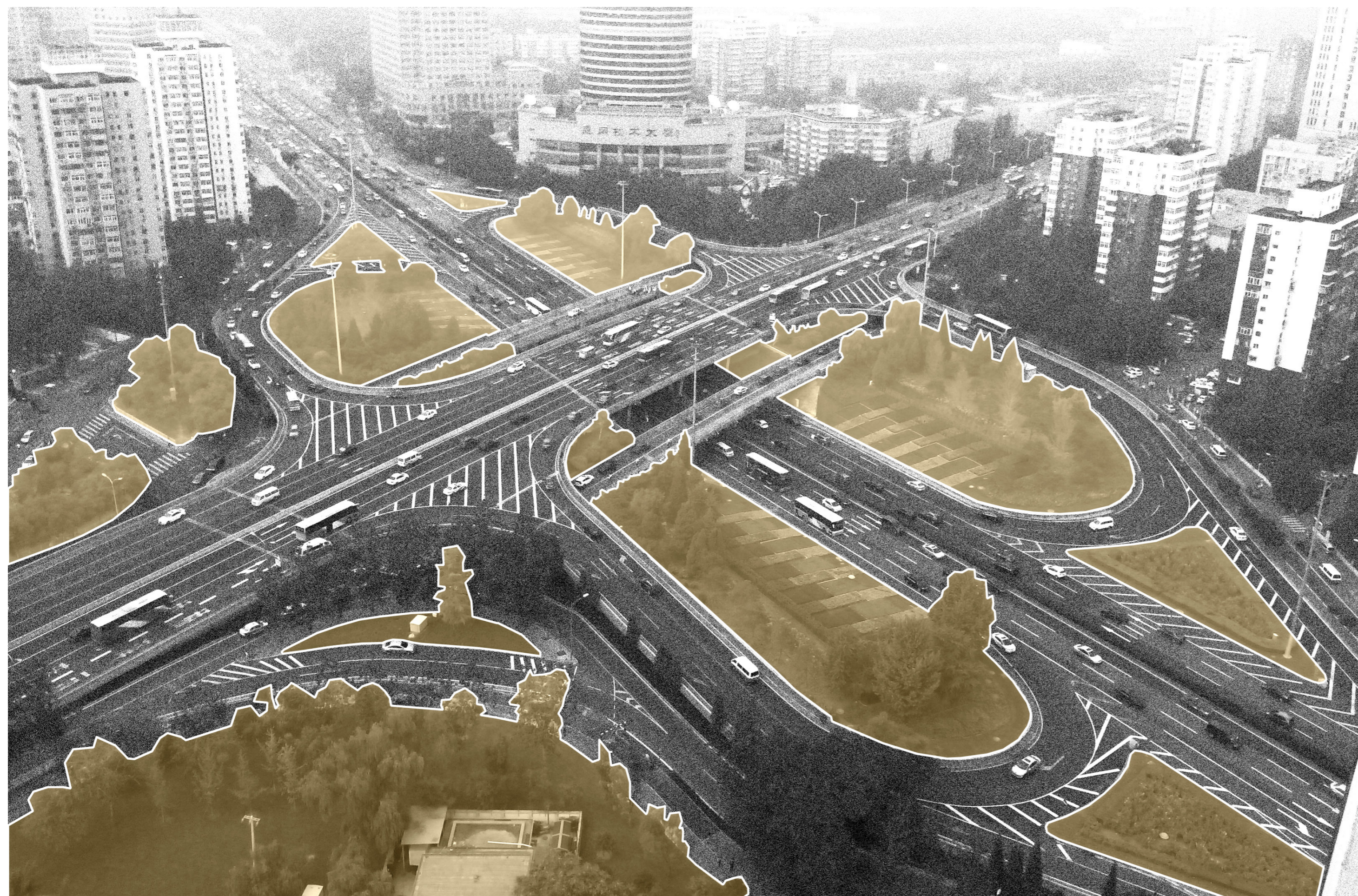


XL

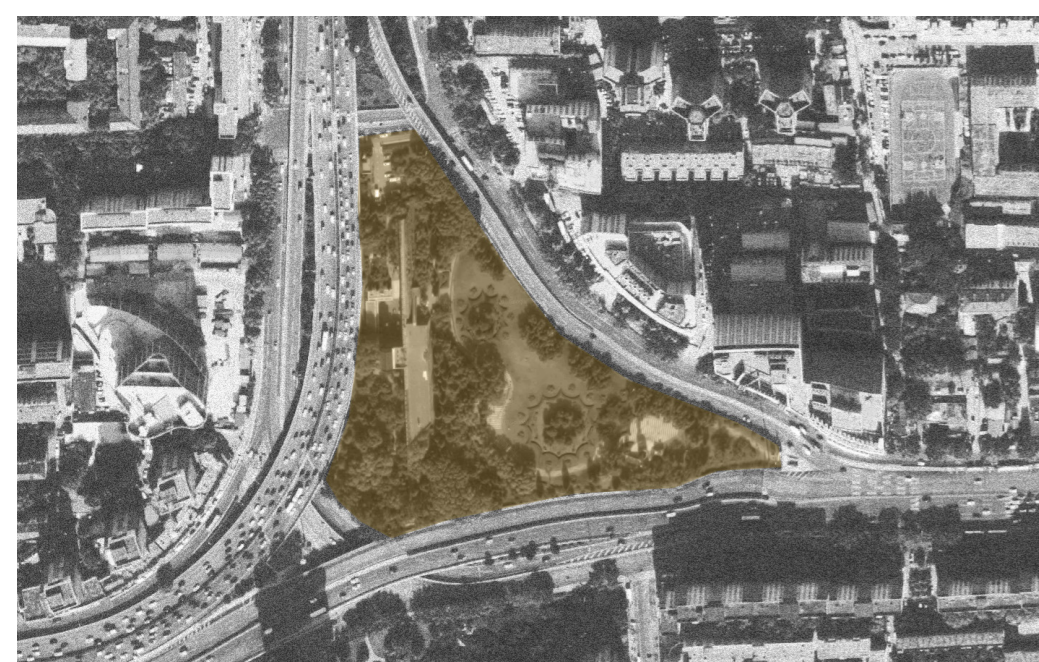
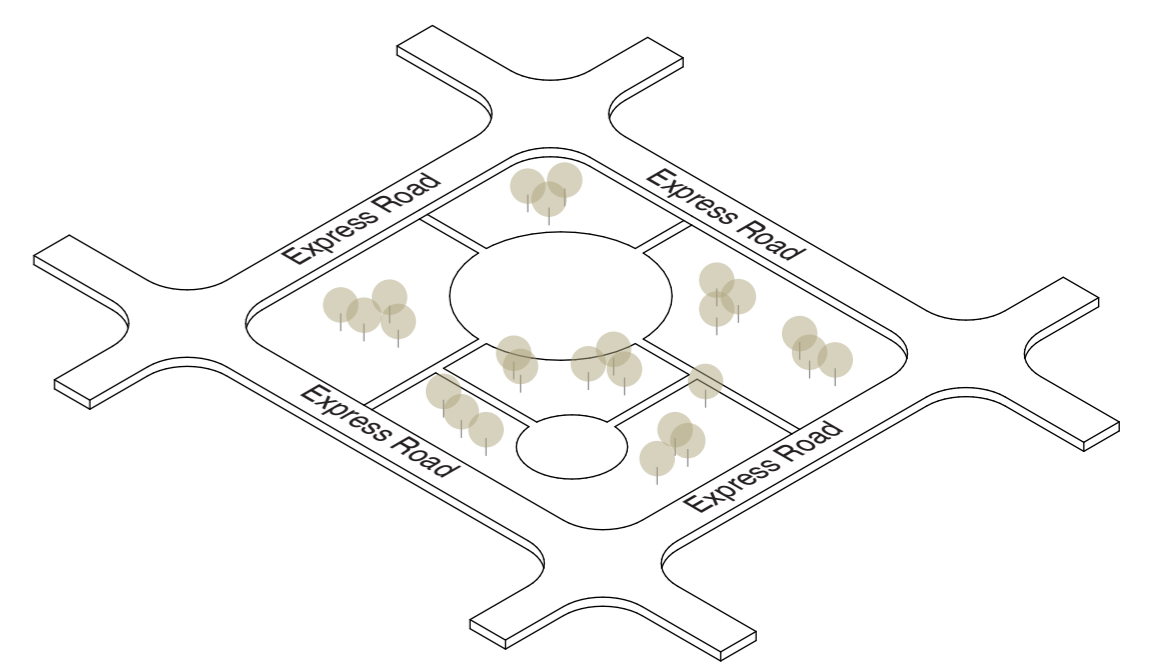
L

M

S



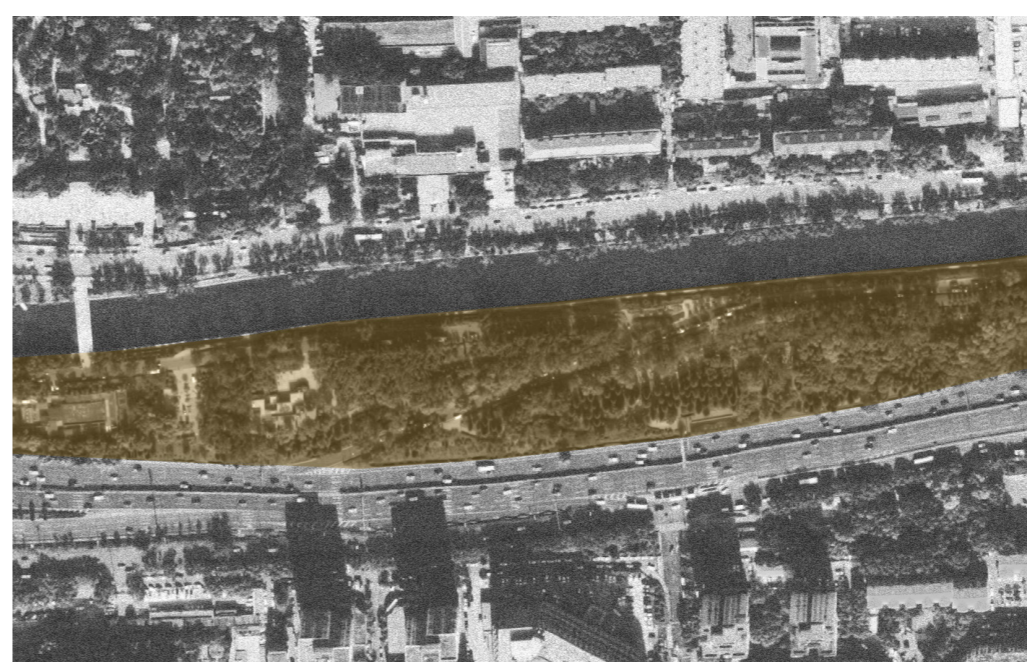
Isolated Green Space



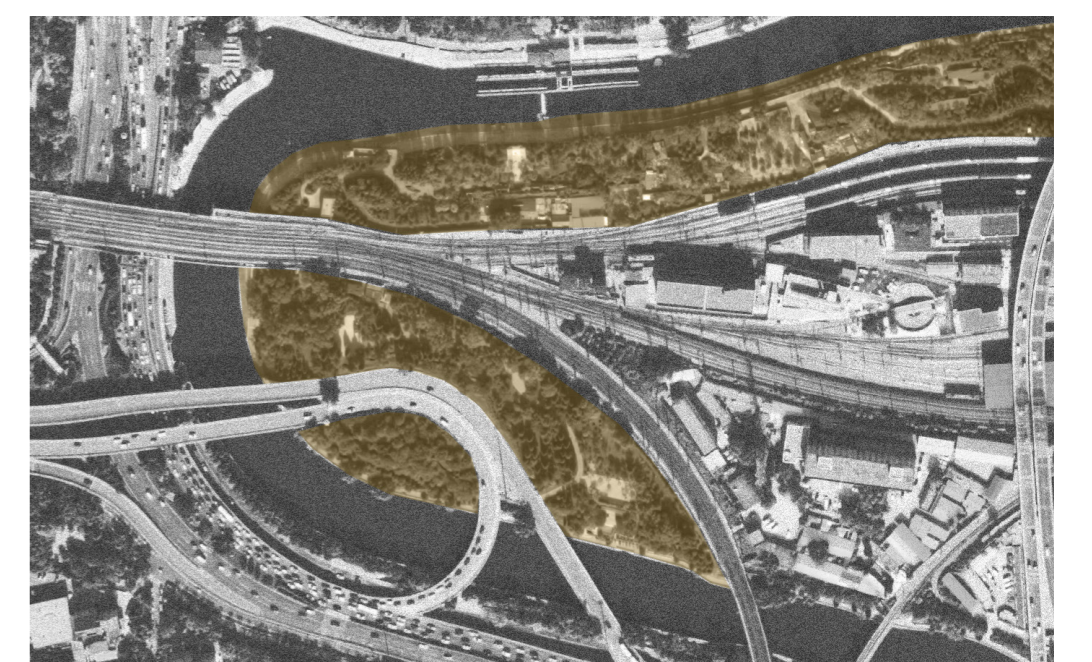
Isolated by express road



Isolated by flyover

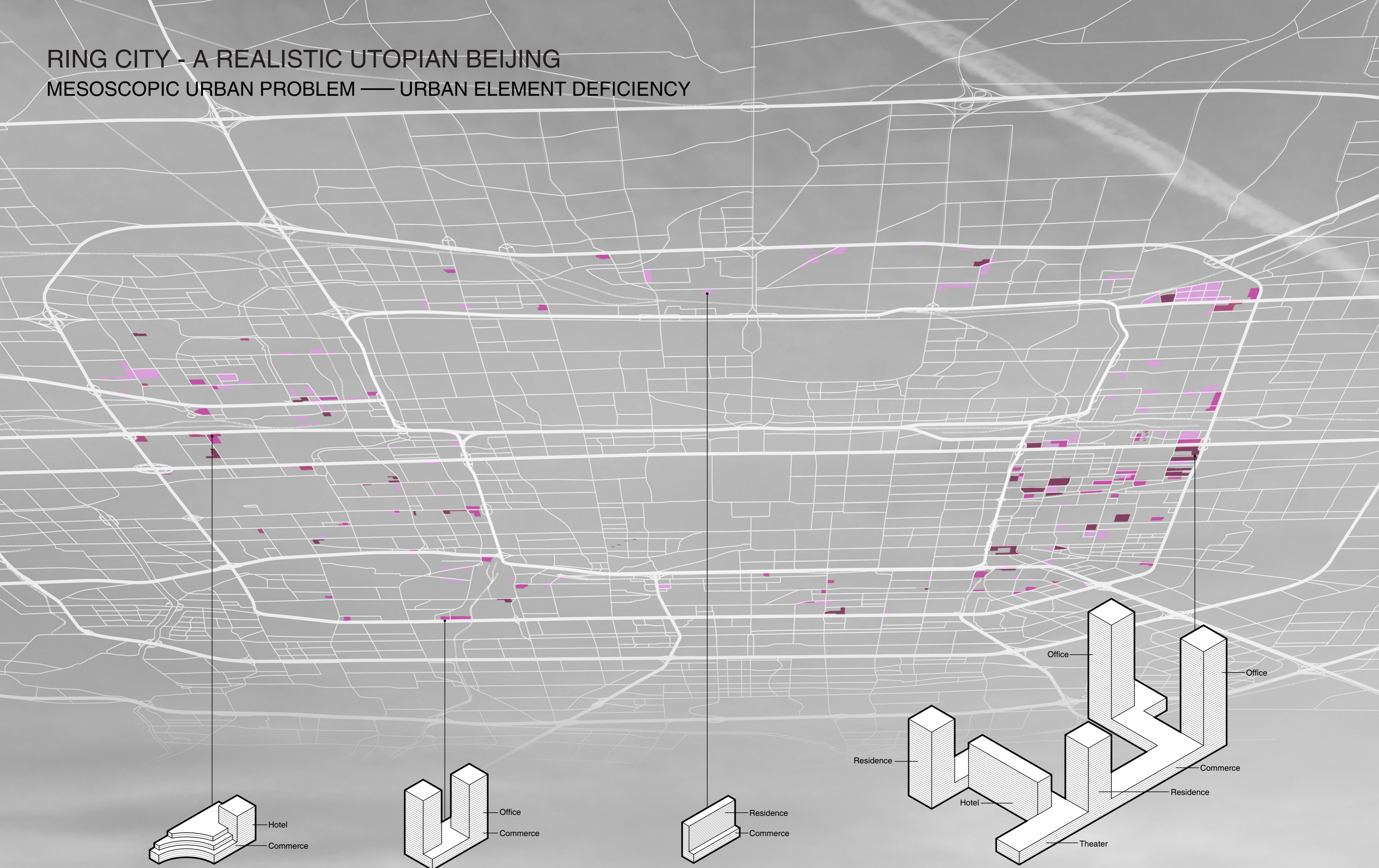


Isolated by express road and river

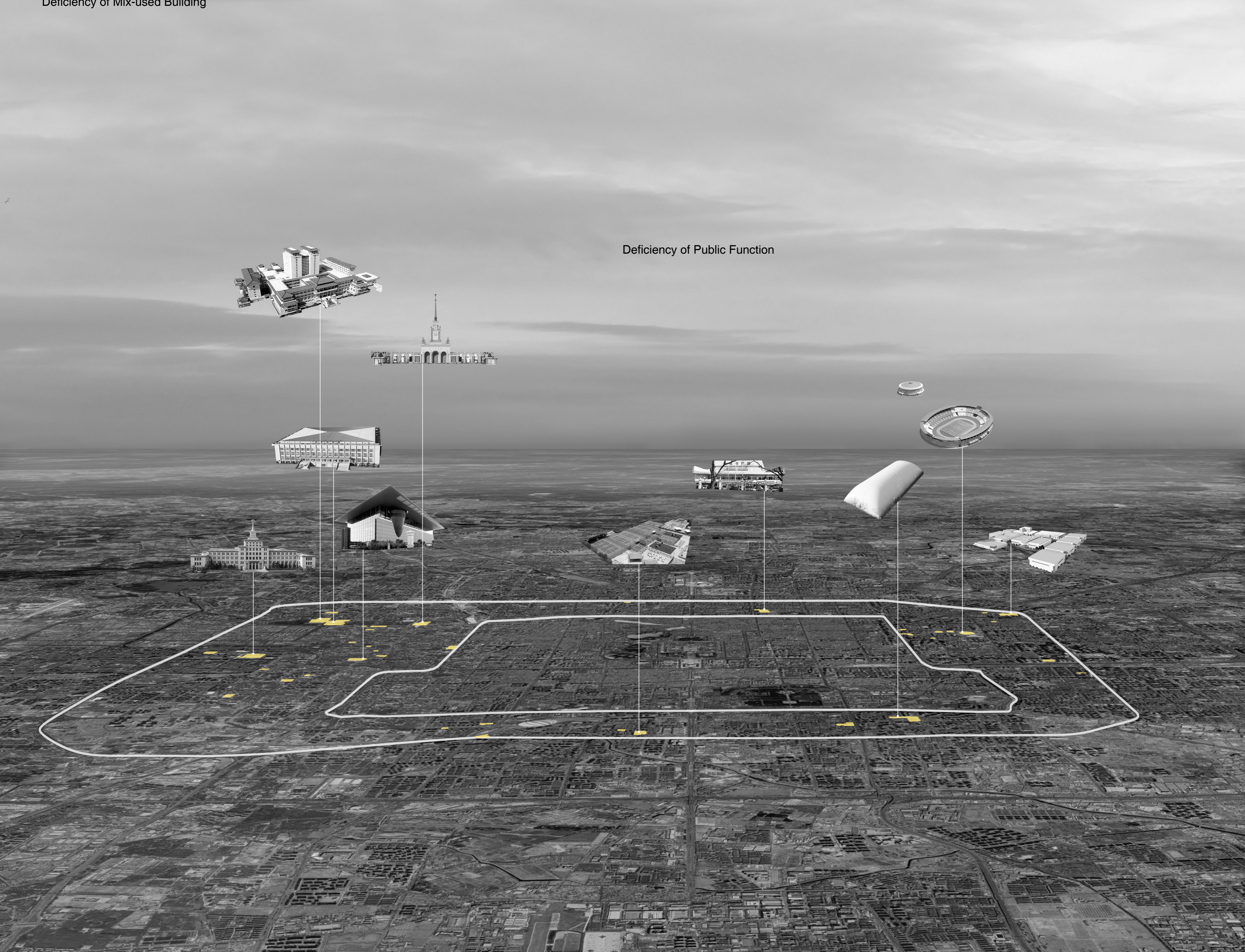


Isolated by railway and river

RING CITY - A REALISTIC UTOPIAN BEIJING  
MESOSCOPIC URBAN PROBLEM — URBAN ELEMENT DEFICIENCY

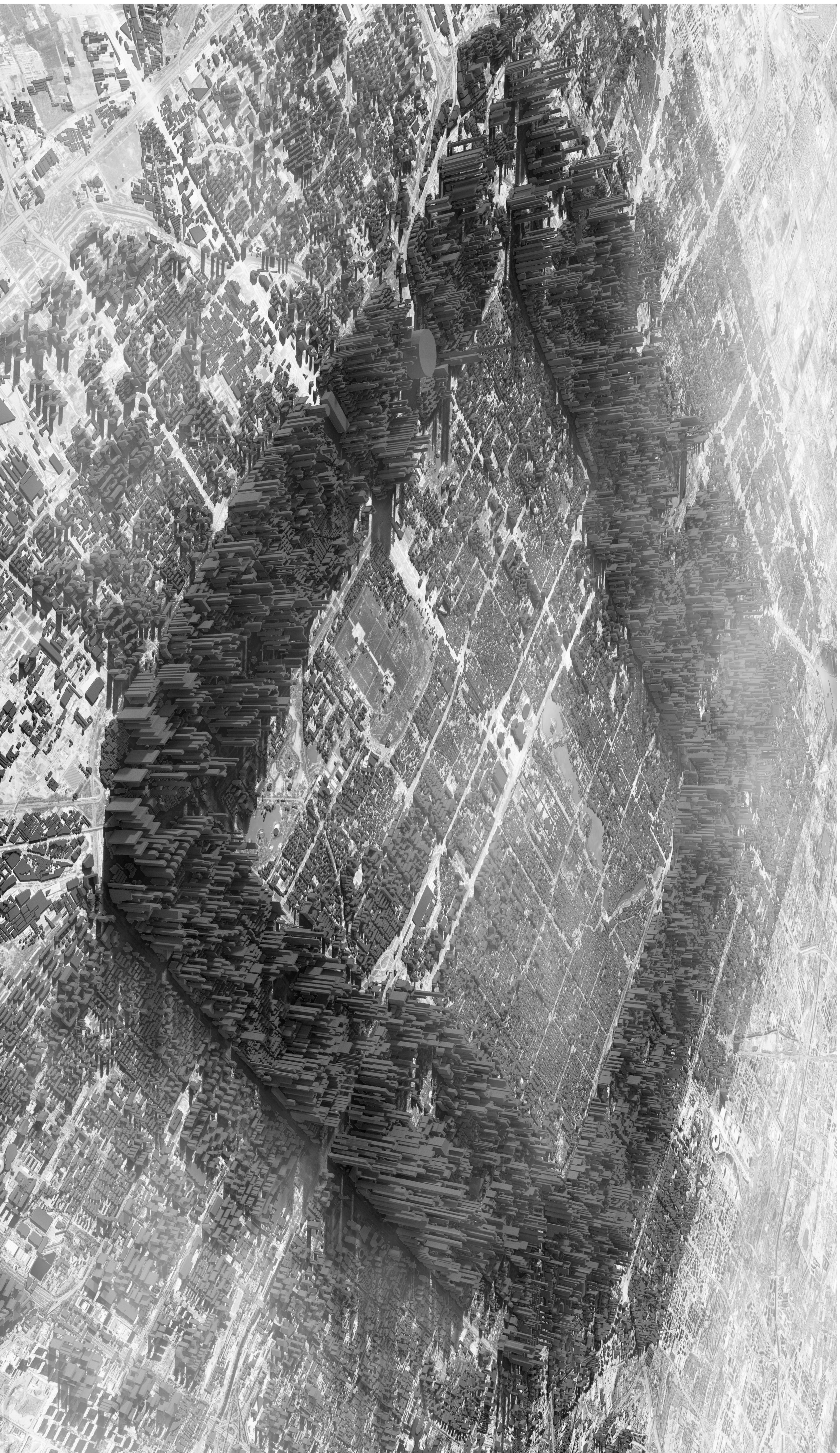


Deficiency of Mix-used Building



Deficiency of Public Function

RING CITY - A REALISTIC UTOPIAN BEIJING  
MACROSCOPICAL PROBLEM



# RING CITY - A REALISTIC UTOPIAN BEIJING

## MASTERPLAN



