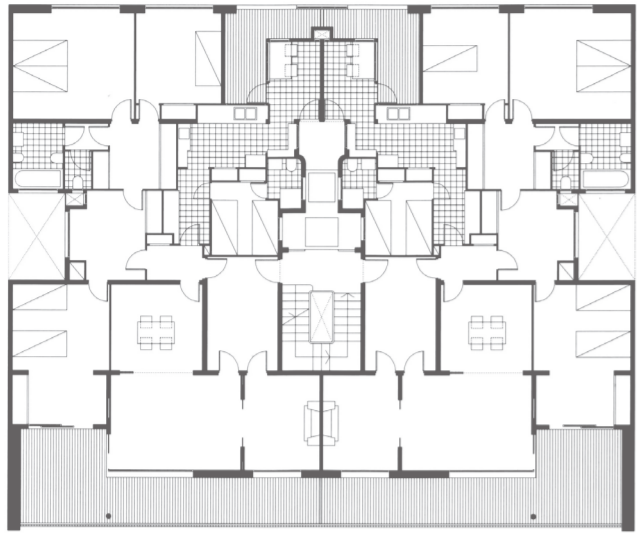


Narratività come invarianti tipologiche permanenti nel tempo e nelle modalità progettuali

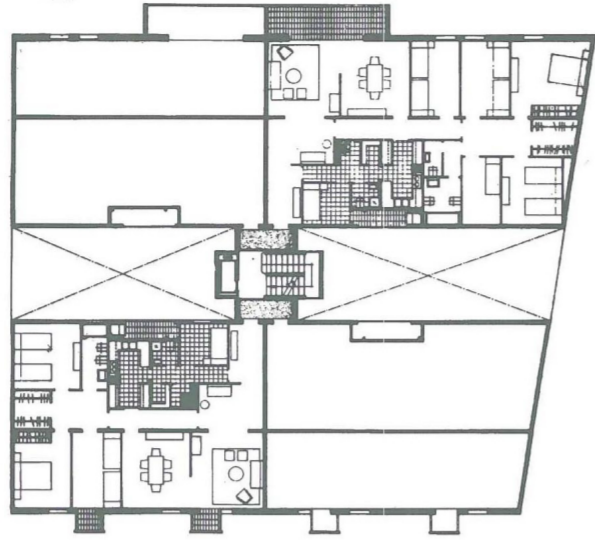
Casi studio a Barcellona

1940 - 1970

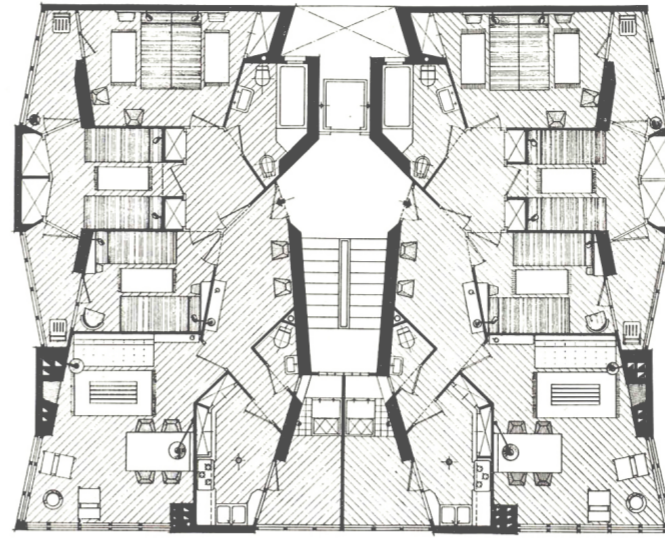
Sistema distributivo a H



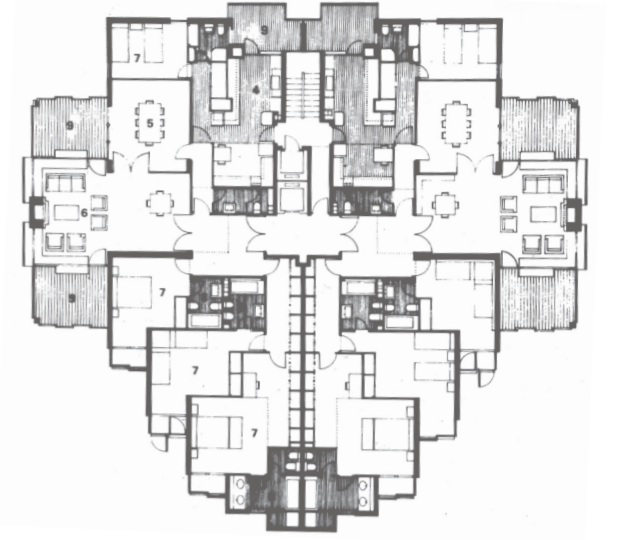
F. Mitjans - Casa Oller
1941-44



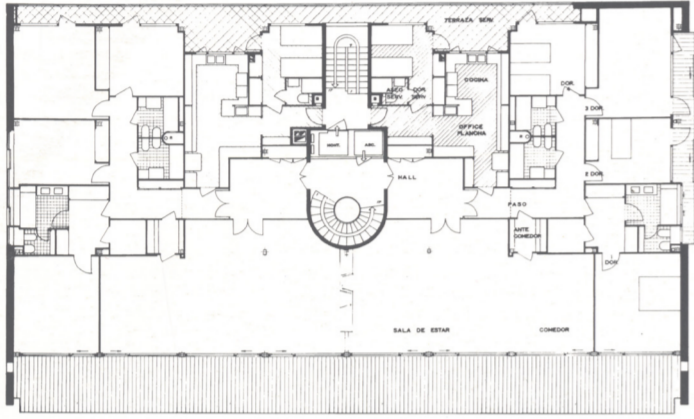
MBM - Viviendas en calle Roger de Flor
1954-58



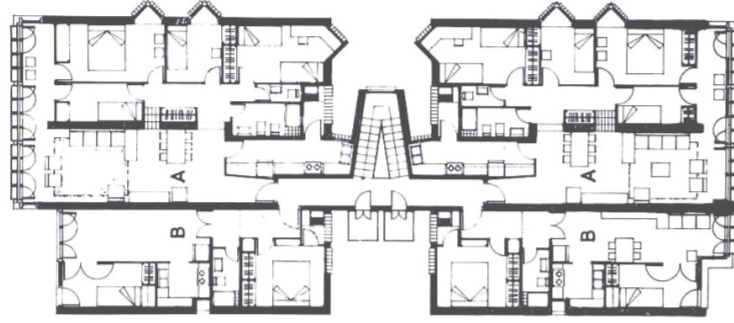
J.A. Coderch - Casa de la Marina
1952



J.A. Coderch - Viviendas del Banco Urquijo
1967



F. Mitjans - Edificio Tokio
1957



E.D. Folch - Viviendas en calle Rosselló
1964-66



L.N. Oller - Viviendas en calle Lepanto
1964-67

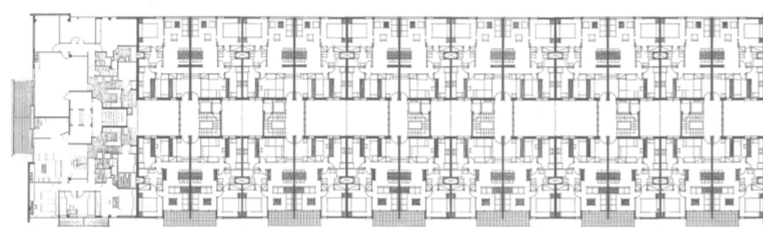


BBPR - Edificio Hispano Olivetti
1964

Sistema distributivo a corpo doppio (su modulo H)



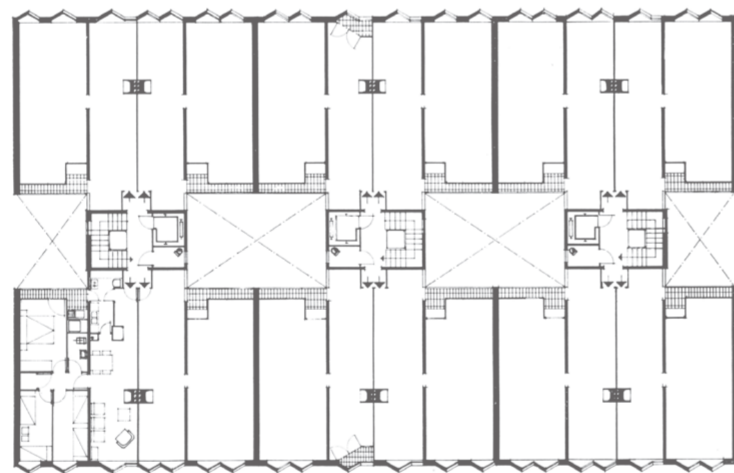
A. Bonet - Edificio Mediterrani
1960-66



F.J. Barba Corsini - Edificio Mitre
1959-62

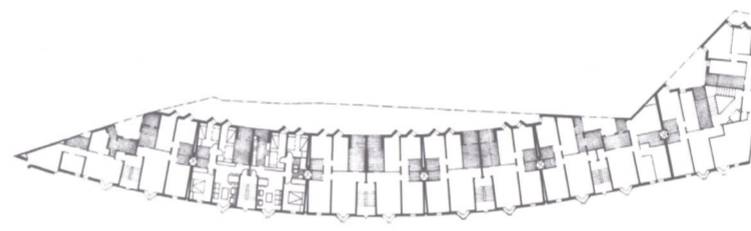


E.D. Folch - Viviendas en la avenida del Hospital Militar
1961-65

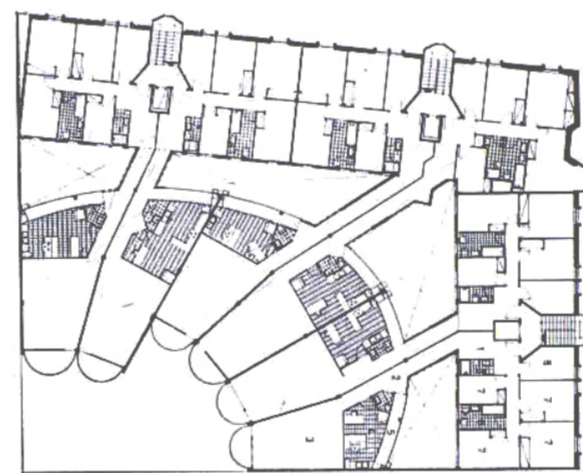


MBM - Viviendas en la avenida Meridiana
1959-64

Sistema distributivo a corpo scala

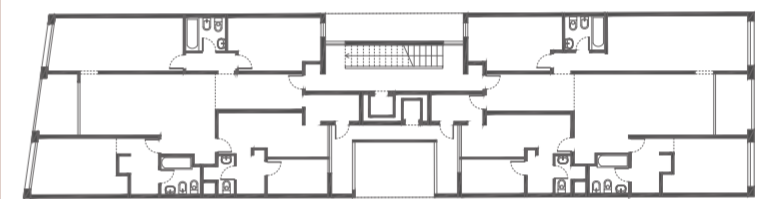


L. Cantallops - Viviendas Santa Rosalia
1967



M. Solà-Morales - Viviendas en calle Muntaner
1963-67

Sistema distributivo a nucleo centrale



L.N. Oller - Viviendas en calle Balmes
1958-62

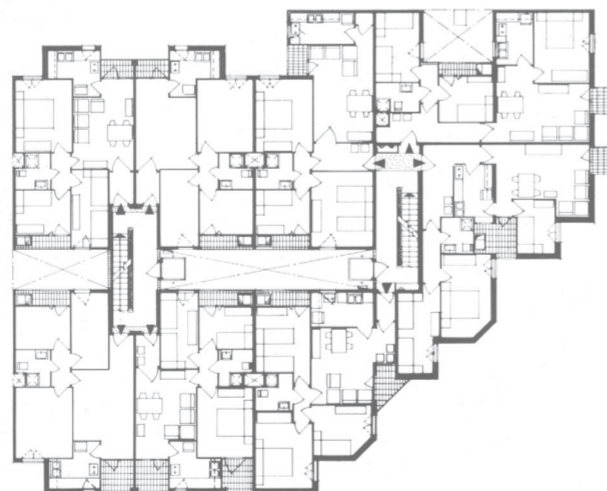


L.N. Oller - Viviendas en Gavà
1997

Sistema distributivo a modulo H con slittamenti e rotazioni



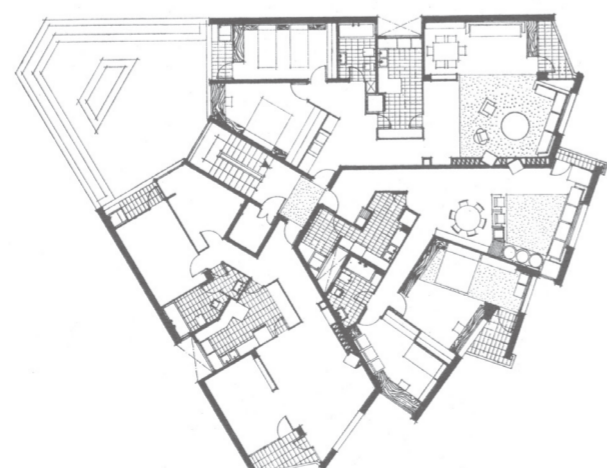
C. Carmona Sanz - Viviendas de Renta Limitada
1963



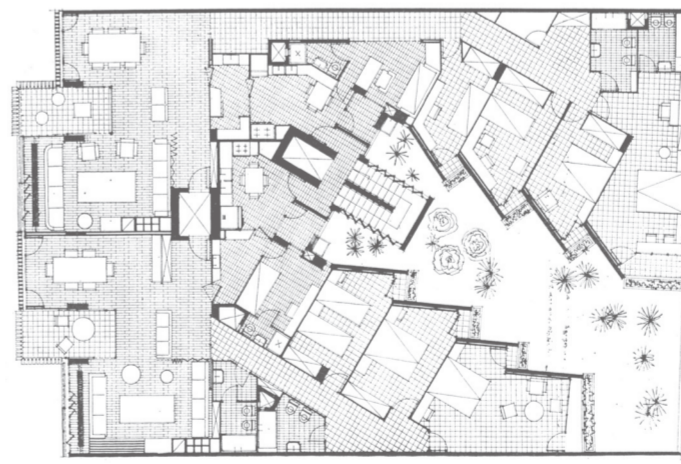
MBM - Viviendas Navas de Tolosa
1960-63



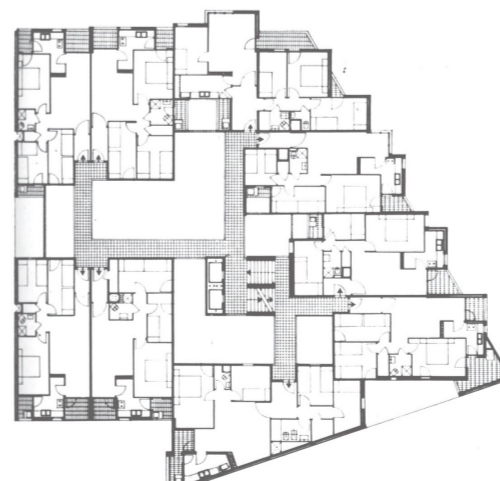
J.A. Coderch - Edificio Monitor
1966



R. Bofill - Viviendas en calle Nicaragua
1962-65

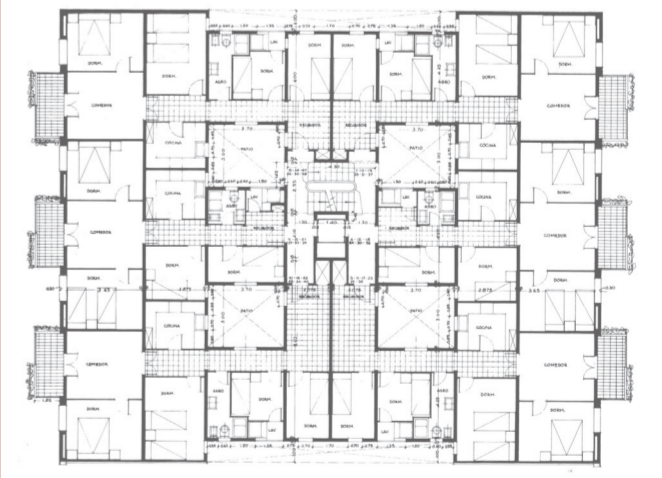


E. Bofill - Viviendas en calle J.S. Bach 28
1960-63

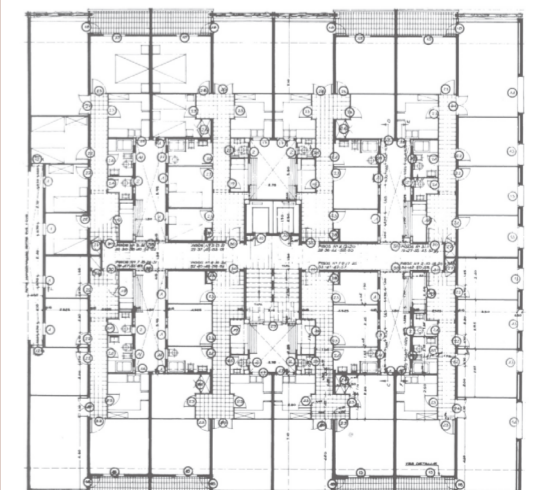


MBM - Casa del Pati
1962

Sistema distributivo a griglia isotropa



A. Moragas - Viviendas en calle Maria Claret
1956-58



A. Moragas - Casa dels Braus
1958-60

Comparazioni Tipologiche
Sistemi distributivi